

# Cambridge



# Crystal Ball

---

ISSUE No. 11

MARCH 1974

---

Published monthly by the NATIONAL CAMBRIDGE COLLECTORS, Inc.  
To encourage and to report the discovery of the elegant and boundless product  
of the Cambridge Glass Company, Cambridge, Ohio

FROM THE DESK OF -  
President Charles Upton

As time draws near for the first Annual Convention of the NCC, one can almost feel the excitement growing. I predict that our first convention will attract national attention in the trade. Cambridge Glass is one of the hottest collectable items on the market today and where could one learn more about a product, than the town where that item was produced. It is with this thought in mind, that I believe that this year will see many great and interesting discoveries in Cambridge Glass.

I would like to ask you all to help the various committees in their work and return your reservations, ballots, display forms, etc. as soon as possible. Please complete the display forms as requested and supply the committees with adequate information on the items that you would like to display in the Club Display. The display will be insured while it is in

our possession, so be realistic in your evaluation. The display will be guarded around the clock.

Are there only three clubs that are affiliated with the National Club? If you need information on members in your area, let us know. We can supply you with them to help you get local clubs organized. We need information on club activities, plans for the future, etc. We can all learn from each other, so get those letters written and mailed.

I would like to direct your attention to the new Post Office Box number for the NATIONAL CAMBRIDGE COLLECTORS, Inc. P.O. Box 416, Cambridge, Ohio, 43725. Please direct all mail other than letters containing advertisements and letters for Robert Coyle to the new Post Office Box number.

Start making your plans to attend the Convention - NOW. You will not be sorry you attended. There is so much to learn about this hobby, or business and all the knowledge and product will be collected here in Cambridge during the week-end of April 26, 27, and 28. Plan to be a part of it and share your knowledge with us. Until then, HAPPY HUNTING!

CAMBRIDGE CRYSTAL BALL

P.O. Box 121  
Cambridge, Ohio 43725

Official Publication of

NATIONAL CAMBRIDGE COLLECTORS, Inc.

President . . . . . Charles Upton  
Vice President. . . . . Ruth Forsythe  
Secretary . . . . . Richard Pavlov  
Treasurer . . . . . John Wolfe

CLASSIFIED ADVERTISING RATES

5¢ per word - \$1.00 minimum

We cannot mix type sizes in classified Ads. Abbreviations and initials will count as words. Payment in full must accompany all ads.

DISPLAY ADVERTISING RATES

	Members	Non-Members
1/8 page . . .	\$ 4.00	\$ 6.00
1/4 page . . .	7.00	10.00
1/2 page . . .	12.00	18.00
3/4 page . . .	17.00	25.00
full page . . .	22.00	33.00

Advertising copy must be in our hands by the 15th. of the month to assure publication in that month's issue. Advertisements containing reproductions will not knowingly be accepted unless clearly stated.

Cambridge Crystal Ball assumes no responsibility for items advertised and will not be responsible for errors in price description or other information.

Ads should be sent to:

DALE SNODE  
Route 6  
Cambridge, Ohio  
43725  
(614) 432-4619

NOTIFY US IMMEDIATELY OF ANY CHANGE OF ADDRESS

Address all letters concerning membership to the attention of:

JOHN WOLFE  
P.O. Box 416  
Cambridge, Ohio 43725

SASE - When requesting information, please send a Self Addressed Stamp ed Envelope.

NATIONAL CAMBRIDGE COLLECTORS, Inc.

Meeting - February 10, 1974

Cambridge YMCA

At 1:20 PM the meeting was opened by President Charles Upton with the minutes and treasurer's reports being read and approved.

Members attending were:

Frank Wollenhaupt..... Dayton  
 Vicki Wollenhaupt..... Dayton  
 Dave Rankin.....Englewood  
 Sue Rankin.....Englewood  
 Bill Gwinner.....Shelby  
 Phyllis Gwinner.....Shelby  
 Gary Campbell.....Senecaville  
 Mona Campbell.....Senecaville  
 Terrance Keiffer.....Senecaville  
 Fran Pavlov.....Cambridge  
 Anna Marie Pavlov.....Cambridge  
 Audrey Darrow.....Zanesville  
 Al Miller.....Pittsburgh, Pa.  
 Mary Jane Miller.....Pittsburgh, Pa.  
 Mrs. G. R. Landman.....Ashland  
 Mr. G. R. Landman.....Ashland  
 Loren R. Yeakley.....Newark  
 Stephen H. Bradley.....Columbus  
 John C. Wolfe, Jr.....Cambridge  
 Wilbur Henderson.....Woodsfield  
 Mrs. Mary Henderson.....Woodsfield  
 Mary Henderson.....Woodsfield  
 Tom Henderson.....Woodsfield  
 Harry Allen.....Heath  
 Evelyn Allen.....Heath  
 Ed Ruby.....Cambridge  
 Robert Coyle.....Newark  
 Richard Pavlov.....Cambridge  
 Charles Upton.....Cambridge  
 Ruth Forsythe.....Plain City

OLD BUSINESS - no old business to be discussed.

NEW BUSINESS- Convention Chairman, Robert Coyle told of Convention plans and discussed the menu for the Saturday Banquet. This has already been mailed to members.

The Guernsey County Library has a film about the Cambridge Glass Factory. A discussion was held concerning the possibility of copying the original film and keeping it as Club property to be used at meetings and loaned to study groups. Charles Upton was to check on the matter.

Continued on next page

Meeting - Continued from page 2

A report was given by Bob Coyle, Chairman of the Nominating Committee which consisted of Coyle, Evelyn Allen and Ruth Forsythe. Nominated for a four year term were: Frank Wollenhaupt of Dayton; Bill Smith of Springfield; and Harry Allen of Heath. Nominated from the floor was Steve Bradley of Columbus who was nominated by Loren Yeakley and 2nd. by John Wolfe. Loren Yeakley of Newark was then nominated by Mona Campbell and 2nd. by Steve Bradley. Yeakley declined. The nominations were then closed with a motion from Robert Coyle and 2nd. by John Wolfe.

John Wolfe reported that there are currently 259 members.

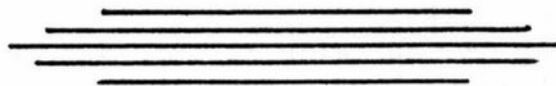
Charles Upton reported that there would be 2000 Cambridge Collectors plates available this year.

Guest speaker for the afternoon was August Heyman, a former Cambridge Glass Plant employee. He was introduced by John Wolfe. Pictures from the April 1955 issue of National Geographic showing Mr. Heyman at work blowing glass were viewed by those present. Mr. Heyman also worked as a glass blower at Tiffen Glass, National of Rochester, New York (parent company of the Cambridge Glass Co.); Imperial Glass and Heisey Glass. He was employed by the Cambridge Glass Co. for 35 years. His talk included a description of how he made hollow stem ware. He had several of his tools to show the members. A 16 1/4 oz. whiskey inhaler was the largest piece he had ever blown. In his opinion, the main reason for the closing of the Cambridge Glass plant was the fact that they were "selected out of business". By this, he meant that they watched so closely for perfect pieces to place on the market, that they would not let any piece that was not perfect be shipped to dealers. He stated that they had to fire the furnaces for 2 weeks before it could be used for making glass. We also learned that Rubina was all green before it was heated - then it turned to red.

Mr. Heyman began working in Glass plants when he was 12 and retired at 67. His father was also in the glass business in Cologne, France where he made some of the first light bulbs. His talk was spicy and was thoroughly enjoyed by all in attendance.

A motion to adjourn was made by Robert Coule and 2nd. by Frank Wollenhaupt.

Coffee and cookies were served and I believe even a few business transactions of Cambridge Glass took place.



#### NORTH CENTRAL CAMBRIDGE COLLECTORS Study Group

On December 17, we had the first annual Christmas meeting and gift exchange of the North Central Cambridge Collectors study group.

The dinner and meeting was held at the home of Frank and Vicki Wollenhaupt.

After dinner, the topic of the evening meeting was etchings. About 20 different etchings were shown that night. Some were the more common ones, but we had our share of the rare ones.

A gift exchange was included with the meeting. The gift had to be a piece of Cambridge glass and couldn't cost over \$5.00. The gifts included a pair of large Mt. Vernon Cream and Sugars, an Amber - Gadroon two hand - led nappy, an amethyst divided tray with a Farber top and bottom, and a 9" Moonlight Blue pickle tray.

Also during the evening, we had a show and tell period. The most interesting item of the evening was the piece that Bill Smith brought with him. It turned out to be a signed graduate. Bill didn't find out it was signed until he got it out to show us. I guess the light was right.

Very Respectfully,  
Frank Wollenhaupt.

# COLLECTORS CORNER

by Robert Coyle

Greetings from the Sunny South! Your Collectors Corner Sleuth gave up basking in the Florida sun and went Cambridge hunting. Even though I was on my last gallon (Gasoline), nothing could keep me from those shops, shows, and flea markets.

Cambridge Glass was not in abundance, but we did locate a few "goodies" to report to you. A shop in St. Petersburg had a nice selection of Crown Tuscan ranging from a ring stem ivy ball to a shell footed cornucopia vase. When speaking to the shop owner, we were informed that Crown Tuscan is the most popular Cambridge color in that area. It should be noted that Crown Tuscan prices in this area seemed a bit higher than in some other parts of the country.

This same shop also displayed several Nude stem cordials in an array of Cambridge colors.

A clear crystal footed large shell bowl was spotted at a Flea Market in Clearwater. Believe it or not - at this vast outdoor market that was the only piece of Cambridge in sight.

An unusual glass flowered lamp mounted in a clear crystal Everglades candleholder was uncovered at the Webster, Florida Flea Market. A few stands away, a Royal Blue ball jug water pitcher obviously stood out among the numerous other non-Cambridge articles on the table.

A trip to a Tampa antique show specializing in Cambridge proved to be interesting and at the same time produced two new Cambridge Collectors Inc. members. This shop offered a nice selection of Cambridge including

several flower frogs, some Moonlight Blue Caprice stemware, and a ring stem ivy balls in several colors. A beautiful three piece console set in amber and a tall Royal Blue vase with crystal stem and foot stood out in one of the several showcases.

A glass Parrot lamp thought to be Cambridge by the shop owners was confirmed as not being a Cambridge product. The owners were disappointed but pleased to know for future reference.

There are some small Owl lamps on the market with the same type screw on base as the Parrot lamp which are also not Cambridge products. The quality of the items is quite inferior in contrast to the Cambridge ones.

Another Cambridge covered Turkey has cropped up in the central Ohio area. This time the color is Mandarin Gold. This has to be one of the more exciting finds reported recently.

Let's not forget the soon approaching National Cambridge Convention and start making plans to spend a big weekend in Cambridge, Ohio.

We are all hard at work to bring you exciting, fun filled First Annual Convention - nothing short of SUPER.. See you in Cambridge.

Robert Coyle  
441 Mt. Vernon Road  
Newark, Ohio 43055

NATIONAL CAMBRIDGE



COLLECTORS INC.

# Patterns

by Ruth Forsythe

Spring weather just around the corner and coming with it, great hopes of finding more beautiful Cambridge Glass to add to our collections.

## DRESDEN FIGURE\*

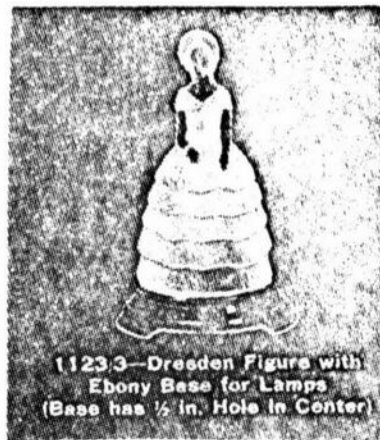
Just don't want you to ever pass up a DRESDEN FIGURE as she is one of the beautiful greats of the Cambridge Glass Company. Have never heard of the figure being marked, so one has to carry a mental picture of her. Have only seen her in all clear and satin finish with clear face, neck and arms. She wears a tiered full skirt dress which is cut low and has short sleeves. She carries a purse which hangs from her right wrist. Her hat is the bonnet type which exposes her hair at the front and above the ears.

The DRESDEN FIGURE came as just the figure and also with an ebony base with a hole in the center so the figure could be used as a lamp.

Difficult to find, but not impossible to find.

\*Ref. Cambridge Glass Company catalogue

Following is a letter from Roland Gruensfelder of Akron, Ohio. We wish to thank Mr. Gruensfelder, as this kind of response is a help to all of us.



11233—Dresden Figure with  
Ebony Base for Lamps  
(Base has 1/8 in. Hole in Center)



1123—Dresden Figure  
Satin Finish, except Face & Arms)

"In the January 1974 issue of the CRYSTAL BALL - featured in your column "Patterns" was Snowflake "Near Cut" design 2635 and you referenced its similarity to Fernland described in the December 1973 CRYSTAL BALL.

I would like to point out that the Fernland toy set carries the design number 2635 and therefore I must conclude they are the same pattern and the name Snowflake is not the official designation of the Cambridge Glass Co. Do you agree?

I also wish to advise you that I have several pieces of Fernland design #2635 marked NEAR CUT, but it does seem to be harder to find marked than most other patterns."

We are glad to hear that some Fernland or Snowflake is marked NEAR CUT. Fernland and Snowflake do bear the same #2635. We do believe, however, the two differ somewhat in design as Snowflake is flanked by hobstars while Fernland by cross hatched diamonds. Minnie Watson Kamm first listed Snowflake with the maker unknown, but she actually pictured Fernland. As this mass confusion new stands, it seems two very similar patterns bear the same design number. The only thing for sure seems at this time to be that both Snowflake and Fernland are Cambridge as the pictures were taken from a 1909 trade catalogue and show the NEAR CUT trade mark.

Does any of our members have any more information to possibly shed some light on the subject?

FIRST ANNUAL CONVENTION  
NATIONAL CAMBRIDGE COLLECTORS, Inc.  
Cambridge, Ohio  
April 26, 27, 28, 1974

SCHEDULE OF EVENTS

FRIDAY, APRIL 26

- 2:00 PM - 8:00 PM - Registration - Holiday Inn  
Room to be announced at Hotel
- 9:00 PM - 11:00 PM - Tour of Bennett's Cambridge Glass Museum  
50¢ per person

SATURDAY, APRIL 27

- 8:00 AM - 12:00 Noon - Registration at Holiday Inn
- 8:30 AM - - - - "Get Acquainted" Continental Breakfast  
Holiday Inn - \$1.75 per person
- 10:00 AM - 9:30 PM - Antique Show & Sale  
National Guard Armory  
McFarland Drive and North 10th. St.
- 9:30 PM - - - - National Convention Banquet  
Holiday Inn - Buffett Dinner  
\$6.00 per person  
Guest Speaker - LUCILLE J. KENNEDY  
Sales Manager  
Imperial Glass Corp.

SUNDAY, APRIL 28

- 8:30 AM - - - - National Convention Meeting  
Holiday Inn  
Buffett Breakfast - \$3.25 per person  
Business Meeting - Announcement of New  
Officers  
"Show & Tell" - Panel Discussion
- 12:00 noon - 6:00 PM - Antique Show & Sale  
National Guard Armory

COMPLETE PACKAGE PRICE - \$11.00 per person

Each registration includes a discount ticket worth 25¢ toward your admission to the 7th. Annual Cambridge Antique Show. (Ticket good for both days.)

DEADLINE - APRIL 8, 1974 - Tickets to be picked up at Registration room at Holiday Inn upon your arrival.

## CAMBRIDGE CARNIVAL GLASS

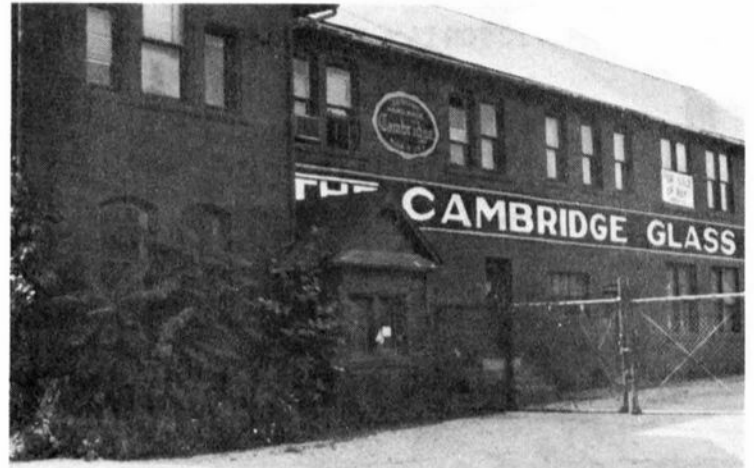
by - Charles Upton

The question, "Did The Cambridge Glass Company make Carnival Glass"? seems to be one question being asked frequently. The most recent being from a fellow club member in Indiana. This member asked if the Millersberg Glass Company did the irridding for the Cambridge Glass Company. The answer to this question is "No", with one exception.

In questioning knowledgeable, former employees of the Cambridge Glass Company, I was able to learn that the Millersberg Glass Company did some experimental irridding on some three or four dozen pieces for the Cambridge Glass Company. The pieces used were all "Nappy or Bowl type" items. These employees reported that the Cambridge Glass Company did their own irridding and that it was done while the items were still hot from the mold. This work was done from around 1910 to around 1920. Needless to say, it is quite scarce and demands a high price tag when found. Most of the pieces being found are the Near-Cut pattern such as Inverted Strawberry, Inverted Feather, Inverted Thistle, Buzz Saw and Wheat Sheaf. Any of the other patterns of Near-Cut that are Carnival would be classes as rare.

It was reported by this member that a Green Carnival, Inverted Strawberry pattern Powder Box was sold at an auction for a mere \$100.00. A Marigold tumbler in the same pattern brought \$110.00 while an Amethyst, 8½" bowl was topped off at a tidy \$110.00. It was also reported that the asking price for a Marigold pitcher in the Inverted Strawberry Pattern was \$1,800.00. \$450.00 was being asked for a Green pitcher in the Buzz Saw pattern and a Marigold punch bowl demanded \$1,200.00. The above items were being represented as Millersberg Glass. The chances that these items are irridded by the Millersberg Glass Company are quite remote and even if they were, this does not make them Millersberg Glass.

The Trade Name "NEAR-CUT" belongs to the Cambridge Glass Company and was the name used on many heavy, pressed pattern glass designs of the Cambridge Glass Company and should never be associated with any other company.



**WANTED**

Cambridge Ambrina & Rubina

VICTORIAN FURNITURE

Richard Pavlov  
623 Wheeling Ave.  
Cambridge, Ohio  
43725

**7th Annual  
Antique Show & Sale  
CAMBRIDGE, O.**

Cambridge Armory  
McFARLAND DRIVE (CITY PARK)

**APRIL** 27 10:00 A.M.  
9:30 P.M.  
28 12 NOON  
6:00 P.M.

**LARGER  
and  
BETTER  
YOU CAN NOT AFFORD  
TO MISS  
THIS GREAT SHOW  
selected reliable dealers**

NATIONAL CAMBRIDGE COLLECTORS, Inc.  
P.O. Box 416  
Cambridge, Ohio 43725

Address correction Requested