

# Cambridge



# Crystal Ball

ISSUE No. 14

JUNE 1974

Published monthly by the NATIONAL CAMBRIDGE COLLECTORS, Inc.  
To encourage and to report the discovery of the elegant and boundless product  
of the Cambridge Glass Company, Cambridge, Ohio

## A Message from your President.....

Filling the shoes of an extremely capable and likeable person such as our past President, Charles Upton, will be somewhat of a difficult task. Charles certainly did an outstanding job this past year in helping to get this organization off the ground and on its way to a National Club that all of its members can certainly be proud of. It's a long winding road ahead, and to ultimately reach that future destination, the encouragement and participation of all of our members will always be welcome and greatly needed.

Even though a smooth operation, we encourage questions, ideas, and advice from all our many members and promise to give any and such, full consideration and discussion in order that we can make this a more complete and versatile club, that will benefit all of its members.

The First Annual Convention of NCC which took place in Cambridge last month was certainly a fine example of the willingness of so many dedicated people that came from different parts of the country to participate and help make it a memorable and exciting weekend.

In order that our CRYSTAL BALL maintain its quality of interest and educat-

ional merit, we need the support and voluntary help of many more members. I know there are many of you reading this article now that could send in items to the CRYSTAL BALL. It isn't necessary that you be a professional writer - just put it in your own words. Tell us what you collect, why you like Cambridge Glass, or any particular knowledge of Cambridge Glass that you might like to share with our readers.

Classified Ads are also an important part of our publication. It helps the Club to cover the ever increasing printing costs and benefits the advertiser who wants to sell or locate certain items of Cambridge Glass.

If you have advertised in the past and have not had the results that you anticipated - why not try again. Our ad rates are reasonable and perhaps this time, you will get your desired results.

At our recent Board of Directors meeting, we planned the dates of the Quarterly meetings for this year. We will announce these dates in the CRYSTAL BALL which will allow all of you to

CAMBRIDGE CRYSTAL BALL  
P. O. Box 416  
Cambridge, Ohio 43725

Official Publication of

NATIONAL CAMBRIDGE COLLECTORS, Inc.

President . . . . . Robert Coyle  
Vice President. . . . William Smith  
Secretary . . . . . Richard Pavlov  
Treasurer . . . . . Gary Campbell

CLASSIFIED ADVERTISING RATES

5¢ per word - \$1.00 minimum

We cannot mix type sizes in classified Ads. Abbreviations and initials will count as words. Payment in full must accompany all ads.

DISPLAY ADVERTISING RATES

	Members	Non-Members
1/8 page . . .	\$ 4.00	\$ 6.00
1/4 page . . .	7.00	10.00
1/2 page . . .	12.00	18.00
3/4 page . . .	17.00	25.00
full page . . .	22.00	33.00

Advertising copy must be in our hands by the 15th. of the month to assure publication in that month's issue. Advertisements containing reproductions will not knowingly be accepted unless clearly stated.

Cambridge Crystal Ball assumes no responsibility for items advertised and will not be responsible for errors in price description or other information.

Ads should be sent to:

DALE SNODE  
Route 6  
Cambridge, Ohio  
43725  
(614) 432-4619

NOTIFY US IMMEDIATELY OF ANY CHANGE  
OF ADDRESS

Address all letters concerning membership to the attention of:

RICHARD PAVLOV  
623 Wheeling Avenue  
Cambridge, Ohio 43725

SASE - When requesting information, please send a Self Addressed Stamp-  
ed Envelope.

Minutes of Meeting  
NATIONAL CAMBRIDGE COLLECTORS, Inc.  
Board of Directors Meeting  
May 19, 1974  
Home of Ruth Forsythe, Plain City, O.

The meeting was called to order at 2:30 P. M. by President, Robert Coyle. Members present were Robert Coyle, Evelyn Allen, Harry Allen, Ed Ruby, Bill Smith, John Wolfe, Frank Wollenhaupt, Charles Upton, Gary Campbell, and Ruth Forsythe.

John Wolfe gave a report on expenses of the Convention and stated that the club netted \$43.00.

Charles Upton said he had finally acquired our tax exempt status as a non-profit organization. So now any donations are tax deductible.

Charles Upton suggested we copyright our oval Cambridge mark on the news letter, glassware and publications, and Cambridge CRYSTAL BALL; the cost being \$10.00 each, or a total of \$30.00. He stated he would have to check with the Imperial Glass Company regarding the oval Cambridge seal. This was moved by Ruth Forsythe and seconded by Bill Smith and passed by the board.

The plate project is not as yet a club project, however, Charles Upton and John Wolfe have pledged all profits to the museum fund. It was suggested that the board of directors actively promote the sale of the plates since all profits do go to the club.

A new application blank which was designed by club member, Holly Stevenson, was shown and accepted contingent cost of printing. Charles Upton moved and John Wolfe seconded the motion for Robert Coyle to go ahead and have the blanks printed if the cost was not more than \$30.00.

John Wolfe was to arrange to have the books audited before turning them over to our new treasurer Gary Campbell, by Tuesday, May 21st.

It was agreed that President Robert Coyle and Treasurer Gary Campbell should furnish bond of \$500.00 each.

Bill Smith made the motion and Evelyn Allen seconded that we approve the audit of the books by John Wolfe through December 31, 1973. Motion was passed.

Motion was made by Frank Wollenhaupt and seconded by Gary Campbell that members are to be charged 60¢ each or \$7.00 for a full year. Motion was passed.



Minutes - Cont.

Frank Wollenhaupt made the motion and Evelyn Allen seconded that Cambridge signs donated by Mr. and Mrs. Donald Herman be sold for \$14.00 each and be advertised in the CRYSTAL BALL. The motion passed.

Gary Campbell made the motion and Bill Smith seconded that Charles Upton handle having stationery printed (2000 each paper and envelopes). Motion carried.

President Robert Coyle appointed Frank Wollenhaupt as Sargent at Arms. He appointed Committee chairmen as follows:

MEMBERSHIP . . . . .	Evelyn Allen
MUSEUM . . . . .	Ed Ruby
PUBLICITY. . . . .	Frank Wollenhaupt
FINANCE	Bill Smith

FINANCE . . . . .	Bill Smith
NEWS LETTER. . . . .	John Wolfe
PROGRAM. . . . .	Charles Upton
PROJECT. . . . .	Ruth Forsythe

Robert Coyle was appointed by the Board to again be Convention Chairman.

QUARTERLY MEETINGS for the coming year

AUGUST 25, 1974  
 NOVEMBER 10, 1974  
 FEBRUARY 9, 1975  
 MAY 9-10-11, 1975 ANNUAL CONVENTION

We agreed as our first project, to have an all Cambridge Glass auction the morning of our quarterly meeting, August 25th. The meeting to follow in the afternoon.

Meeting adjourned at 6:30 P. M. ▲

# NOTICE 1974-75

## MEMBERSHIP

## IS NOW DUE

Member with Voting Rights — \$10.00 yearly dues  
Member receives monthly newsletter.

Each additional household member (must be 12 yrs. or over)  
\$3.00 yearly dues — member with voting rights

Make checks payable to:

National Cambridge Collectors, Inc.  
P. O. Box 416  
Cambridge, Ohio 43725

NATIONAL CAMBRIDGE COLLECTORS, Inc. is a non-profit organization with the purpose of establishing a museum in the city of Cambridge or Guernsey County so collectors can enjoy and study the beautiful glassware.

Benefits of the club will be a newsletter which will contain informative data on Cambridge Glass; news of reproductions; a dealer directory; want and classified ads, along with articles on former Cambridge employees and many special articles of interest. A yearly Convention will be held.

# Patterns

by Ruth Forsythe

HAPPY BIRTHDAY!

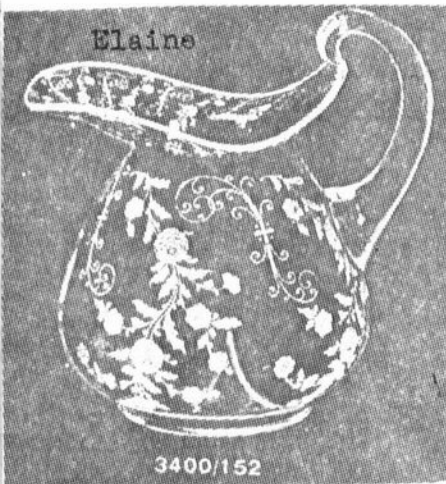
Our Cambridge CRYSTAL BALL is one year old and "growing like a weed."

The word is spreading. An antique dealer recently told us that she had noticed a definite turn to Cambridge as so many people are coming into the shop and asking for Cambridge Glass.

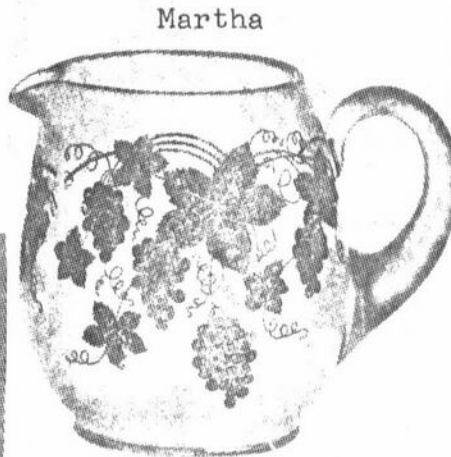
June, the month of birds and always the big problem of selecting an appropriate gift. How simple the problem would have been of the bride's name were the same as a named pattern made by the Cambridge Glass Company.



No. 2361 Vase  
10 in.



3400/152



No. 111. 3 1/2 Pint  
Jug



3122



3126



No. 7606. 10 oz.  
Goblet  
Optic



No. 7966 - GOBLET  
Wedding  
Rings

Pictured are Portia, Betty, Diane, Elaine, Cleo and Martha in deep plate etching. Also and quite fitting is Wedding Rings, which is engraved rather than etched\*

In addition to the etchings, please note the various Cambridge stems and shapes.

This does not cover all the patterns named for my lady. We hope to cover more later.

\*Ref. Cambridge Glass Company catalogues





Patterns - Cont.

Have you ever wondered just how etching on glassware is done? Following is an account of the method of deep plate etching used by Cambridge. This information was taken from a brochure published by the Cambridge Glass Company entitled "The Art of Making Fine Glassware".

"In the Deep Plate method, the master etching is first made on a metal plate. If you were to examine one, you would instantly recognize the design executed in raised metal, just like the letters on printer's type. Because of the variation in size of different pieces, it is necessary to have a separate master plate for each size of piece - goblet, wine glass, tumbler, plate and whatever others are to be etched in this particular pattern.

This plate is first covered with a special black wax or ink and the excess then scraped off, exposing the raised portions of the metal which constitute the design, while the hollows which are not to be etched remain covered with the black wax.


A special tissue paper is then laid over the plate and firmly pressed down so that when the paper is stripped off, the wax or ink adheres to it, completely covering the paper except in the lines of the design from which all was had previously been removed by the scraping of the metal plate. After trimming away the excess, this paper is then wrapped around the glass to be etched. The wax hardens and the paper is then softened with a special liquid and stripped off. This leaves the portion of the glass which is to be decorated covered with wax except where the design occurs. Wax is then applied to protect those portions of the glass which are not involved in the design, such as the inside of goblets, the top of plates, etc.

This placing of the design on the glass is a very delicate operation and must be done with extreme accuracy. Pick up a Cambridge Etching, examine it very thoroughly. You'll find it exceedingly difficult to find any break in the design to indicate where it began and where it left off.

The article is then ready for the hydrofluoric acid bath, which eats away or etches, only the exposed glass wherever it is not covered with pro-

TECTIVE wax, namely in the lines of the design from which the wax was scraped off while it lay on the original master plate.

In the Cambridge plate the greatest care possible is used in formulating the etching solution and in allowing the piece to remain in the bath just the right length of time. In consequence, there is a depth, clarity and brilliance to the Cambridge Etched piece which you do not find in ordinary etchings. The decorative pattern formed by the etched glass is literally alive with light, reflected from a million tiny surfaces. It has a delicacy of line that catches every glint of light. In its delicacy of detail, it resembles the world of the Old Master etchers whose work is prized by connoisseurs of art, with a value almost above price. If you compare Cambridge Etching beside the rather lifeless, frosted etchings found on much expensive crystal, you will be amazed at the great difference, which is plain to the most casual eye.

From the acid bath, the glass goes to the automatic washing machines, where hot water removes all wax and reclaims it for further use. The glass is again inspected, this time for acid spots, thoroughly polished with sawdust, and wrapped for packing. 

---

from your President - Cont.

mark your calendars and ample time to be allowed for making yourselves available for these meetings.

If you haven't attended a Quarterly meeting, perhaps you can participate in the next one. You might have a good time discussing Cambridge Glass and meeting people from other areas that have similar interests to yours.

In the meantime.....

Choose Cambridge



## CONVENTION BANQUET-

By Frank Wollenhaupt  
Dave Rankin

(A note from Fran - Unfortunately, we did not receive this article in time to print in last month's newsletter. Although sent in time, we did not receive it in time, but it covers the Banquet so well, that I think it should be printed in this issue.)

The first Annual Convention of the National Cambridge Collectors has now become history. Hopefully, the convention will recall pleasant memories to all those who attended.

The Saturday evening banquet was well attended with approximately one hundred club members and their friends in attendance.

The dinner started late in the evening, after all the dealers had closed shop for the day. After the meal, our President, Charles Upton opened the business portion of the festivities. Charles recognized the Mosser Glass Company for the table favors. They were reproductions of the Cambridge three inch swan. The officers and other members of the Board of Directors were then introduced to the members. They were Ruth Forsythe, Vice President; John Wolfe, Treasurer; Dick Pavlov, Secretary; Dale Snode, Sargent-at-arms, (who happened to be out at the Armory guarding the glass); Gary Campbell, Evelyn Allen, Tony Allen, Ed Ruby, and Bob Coyle. Loren Yeakley and Jabe Tarter, the other two board members were unable to attend the banquet that evening.

Introductions were concluded and Charles asked Bob Coyle, the Convention chairman to take the floor. Bob recognized all of his committee chairman and their workers.

Charles Upton then introduced our guest speaker, Lucille Kennedy, General Sales Manager of Imperial Glass Company. Miss Kennedy has been in the glass business for thirty-one years. She stated that she loved Imperial Glass and all hand made glass and it was quite evident from her pleasant and introducing speech. The acquisition of the Cambridge Glass Company by Imperial was the general topic of her

speech. We did learn that the acquisition of the Cambridge plant included all molds, tools, patents, and the trademark. Miss Kennedy informed us that to date, Imperial glass does not have a complete list of all the Cambridge molds that they acquired. Upon completion of the list, she promised to inform our club so that we might publish it in our newsletter. Also, Miss Kennedy promised a complete listing of all Imperial glass reissued in the Cambridge molds.

Miss Kennedy suggested that our guest speaker for our 1975 Convention be Mr. Gene Henn who was employed by the Cambridge Glass Company from 1923 thru 1954. He had the sad task of closing the New York office in 1954.

The rest of the evening was taken up by a drawing with the ticket holders receiving re-issues of Cambridge by Imperial Glass Company. Miss Kennedy was kind enough to bring these little goodies with her. The highlight of the drawing was the Mount Vernon decanter, Crystal Decorated with gold.

After the drawing was held, the meeting was adjourned for the evening and everyone headed for their rooms or home to try and get a few hours of sleep before the next day's meeting.

Very Respectfully,  
Frank Wollenhaupt  
Dave Rankin

NATIONAL CAMBRIDGE



COLLECTORS INC.

# COLLECTORS CORNER

Frank Wollenhaupt

As you are all aware, Robert Coyle has been elected as our new President. Bob has handed over the reins of "Collectors Corner" to me, Frank Wollenhaupt. I hope the I can do justice to this task.

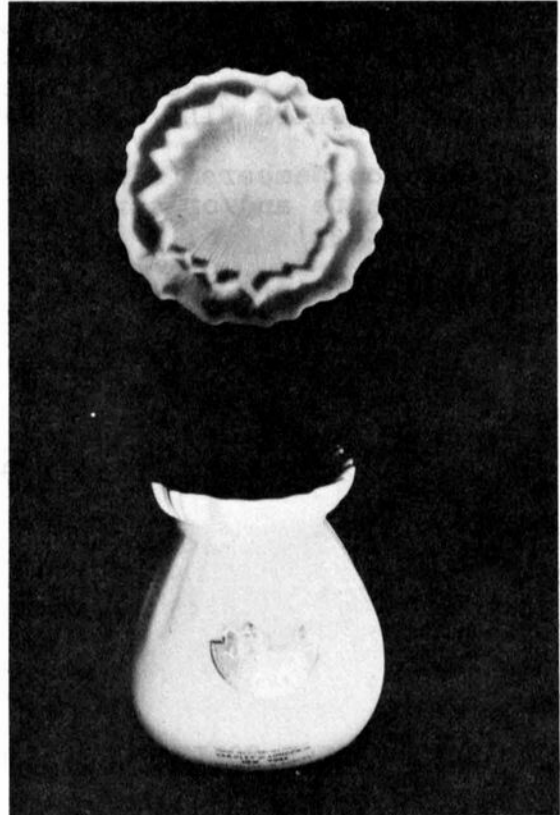
I guess most of you are wondering just what a Frank Wollenhaupt is! He's a twenty-eight year old guy with a wife, five cats, and not enough Cambridge Glass.

My wife and I started collecting Cambridge about four years ago. Our first piece was a large moonlight Caprice tray. At that time, I didn't even know what Cambridge Glass was, so this necessitated a trip to the local library. I found that very little was written about Cambridge Glass, so I started to dig and ask questions. I'm still digging and asking questions. I would like to think that that was why Bob asked me to take over "Collector's Corner".

I realize that a lot of collectors like out of state and cannot attend the quarterly meetings. I will endeavor to share the meetings through this column, especially the Show and Tell portion.

My wife and I are gone a lot over the weekends, trying to find Cambridge glass that we all know is still out there. I would appreciate any information you run across in your shop hopping, show going, or just plain junk

hunting. We don't care how rare it is - all we want to know is..... what are you selling well in your area and any other information you would care to share with the other members. Remember, we members make it. I can't make up stories without information supplied by all of you. I hope this had pushed you to the pencil and paper.



The photo that is shown deals with "Salt & Pepper" Sachet that was made by Cambridge Glass Company for Yardley of London. ( Ref. Issue #7, CRYSTAL BALL, Colors in Cambridge). This photo is compliments of Dave and Sue Rankin. It shows the top that everyone is looking for, some of the label is still intact, stating the contents. It really is a Sachet bottle. Dave tells me that he found it with a bunch of Avon bottles at a flea market. Now that we all know that they aren't Salt and Peppers, let's find some with tops!

In closing, I would like to thank everyone that voted for me in our recent election. I promise to do the best job that I can and to keep the welfare of the membership as my foremost thought.

Frank Wollenhaupt  
633 Bowen Street  
Dayton, Ohio 45410

NOTICE

We are planning an all Cambridge Glass Auction for August 25th to precede our quarterly meeting.

Check your Crystal Ball each month for further information.

Please let us hear from you as soon as possible about any items you wish to donate and/or consign. Commission for selling consigned glass will be 20%. ALL PROCEEDS WILL GO TO NATIONAL CAMBRIDGE COLLECTORS, INC.

Come on Members (also non-members) what have you to donate and/or consign. Let's make this venture a success!

Send all information to:

Ruth Forsythe  
7155 Post Road  
Route 3  
Plain City, Ohio 43064  
Phone (614) 889-2472

NATIONAL CAMBRIDGE COLLECTORS, INC.  
P.O. Box 416  
Cambridge, Ohio 43725

Address Correction Requested