

Cambridge



Crystal Ball

ISSUE NO. 42

OCTOBER 1976

Published monthly by the NATIONAL CAMBRIDGE COLLECTORS, Inc.
To encourage and to report the discovery of the elegant and boundless product
of the Cambridge Glass Company, Cambridge, Ohio

Thoughts from the President - - - -

Why do people join an organization such as N. C. C.? Why do they remain members over a long period of time? Why do they travel many many miles to attend meetings?

Basically, it is for only one reason. To obtain additional information about the collectable of their choice.

The true collector has two goals. First, to add items to the collection, and secondly, to obtain additional knowledge pertinent to their collection.

The real beauty of this situation is the fact that each of these purposes helps to further the other. Additional pieces will yield new or different information and this in turn leads to more pieces found. It is a very satisfying circle of events.

The collectors who founded our club recognized a basic fact about collecting. The most beneficial method of obtaining information and building collections is to bring collectors of a common interest together.

It was also recognized that the benefits received by each participant would be proportional to the number participating and to the degree of participation. The greater the total participation, the greater the individual benefit.

Several methods have been utilized to in-

crease the benefits. A newsletter, study groups, interesting meetings, auctions, and more recently a show. Each method provides a forum for the exchange of information or for the exchange of collectables.

The results to date show that our founders had the right ideas. Cambridge has become very collectable and we have many members exchanging information and enhancing their collections.

What is left for us to do? How can we improve on past efforts? Only by expanding!

Our effort toward expansion should be based on the basic idea used by our founders. Bring collectors together.

Many of the people collecting Cambridge today are not members of our club. Our energies should be directed toward reaching these people and making them aware of the benefits gained in group participation.

Bringing collectors together is the key to making this our "Year of Growth".

Bill

<p>MEMBERSHIP RENEWAL NOTICE</p> <p>If the date on your Address Label is - 10-76</p> <p>This is your last issue of the CRYSTAL BALL! Don't miss a single issue - RE-NEW YOUR MEMBERSHIP NOW!</p> <p>FORM ENCLOSED FOR YOUR CONVENIENCE!</p>
--

CAMBRIDGE CRYSTAL BALL

P. O. Box #416
Cambridge, Ohio 43725

Official publication of National Cambridge Collectors, Inc., a non-profit Corporation with tax exempt status. Published once a month for the benefit of its members. Membership is available for individual members at \$10 per year and additional members (12 years of age and residing in the same household) at \$3 ea. All members have voting rights, but only one CRYSTAL BALL will be mailed per household.

Back issues of the CRYSTAL BALL are available to members only, at a cost of 60¢ each or 12 issues for \$7.

1976-77 Officers & Committee Chairpersons

PRESIDENT ----- William C. Smith
VICE-PRESIDENT ----- David G. McFadden
SECRETARY ----- Janice Hughes
TREASURER ----- David G. McFadden

BUDGET & FINANCE ----- William C. Smith
BY-LAWS -----
CONVENTION ----- John Wolfe
MEMBERSHIP ----- Sue Rankin
MUSEUM ----- Larry Hughes
PROGRAM & ENTERTAINMENT ----- Doris Isaacs
PUBLICITY ----- Jack Rettig
STUDY GROUP ADVISORY --- Frank Wollenhaupt
PROJECT ----- David B. Rankin

CRYSTAL BALL Editor ----- Phyllis D. Smith

CLASSIFIED ADVERTISING RATES

5¢ per word \$1.00 minimum

We cannot mix type size in classified advertisements. Abbreviations and initials will count as words. Payment in full must accompany all ads.

DISPLAY ADVERTISING RATES

	Members	Non-Members
1/8 page -----	\$ 4.00	\$ 6.00
1/4 page -----	7.00	10.00
1/2 page -----	12.00	18.00
3/4 page -----	17.00	25.00
Full page -----	22.00	33.00

DEALERS DIRECTORY

1" ad ----- \$5.00 for 6 months

Cambridge CRYSTAL BALL assumes no responsibility for items advertised and will not be responsible for errors in price, description, or other information.

Advertising copy must be in our hands by the 15th of each month to assure publication in our next issue. Advertisements containing reproductions will not knowingly be accepted unless clearly stated.

Please address all correspondence to:

Cambridge CRYSTAL BALL
National Cambridge Collectors, Inc.
P. O. Box #416
Cambridge, Ohio 43725

PLEASE NOTIFY US IMMEDIATELY OF ANY CHANGE IN YOUR ADDRESS!

PLEASE enclose a Self-Addressed, Stamped Envelope when requesting information.

BOOKS FOR SALE

National Cambridge Collectors, Inc. is proud to announce that you can now order all of the available reference books on Cambridge glass directly from the Club.

Address your orders for any of the following to:

BOOKS
National Cambridge Collectors, Inc.
P. O. Box 416
Cambridge, Ohio 43725

"1930 - 1934 CAMBRIDGE GLASS CO. CATALOG REPRINT"
by National Cambridge Collectors, Inc.
(250 page reprint of original catalog)
Hardbound with Price Guide \$14.95

"THE CAMBRIDGE GLASS BOOK"
by Harold and Judy Bennett
(96 pgs. with 59 color plates) \$9.95

"1975 PRICE GUIDE TO THE CAMBRIDGE GLASS BOOK"
by Charles and Mary Alice Upton
(Prices for each item in Bennett book) \$1.75

"CAMBRIDGE, OHIO GLASS in COLOR II"
by Mary, Lyle and Lynn Welker
(15 color plates w/description and notes) \$5.95

"CAMBRIDGE GLASS CO. BOOK II"
by Mary, Lyle and Lynn Welker
(119 pgs. of reprints from old catalogs) \$6.95

"1903 CAMBRIDGE GLASS CO. CATALOG REPRINT"
by Harold and Judy Bennett
(106 page reprint of original catalog) \$7.50

OHIO RESIDENTS ADD 4 1/2% SALES TAX



QUARTERLY MEETING REPORT

by Doris Isaacs

The Quarterly Meeting was held at 8 PM, August 21st, at the Columbia Gas Company on Highland Ave. in Cambridge, Ohio. It was easy to find and had plenty of parking space.

Probably all of the 36 members in attendance had attended the All Cambridge Glass Auction during the afternoon and were tired. But, I'm sure they will agree that the members who did not stay for the meeting missed a good one.

The sale of the catalog seems to be going very well. No wonder - it is a beautiful catalog and we have had good publicity. The Publicity Committee is to be congratulated.

In the CRYSTAL BALL report a plea was made for help in the form of articles or information. If you are like me, you have put off writing to Phyllis. Why not take a few minutes and drop her a note with any information you might have. She'll know how to use it in the CRYSTAL BALL. It truly is not fair to let a few people do all of the work!

John Wolfe's program on Cambridge colors and the use of black light was great! He even shared some of W. C. McCartney's correspondence with us.

Some of the pieces in the color display were experimental ones. Some unusual pieces shown were: A pearl green milk pitcher (tankard), an orange #1309 5" vase, a frosted cinnamon everglades bowl, a crystal relish with green enamel and decal trim, and a smoke crackle bowl cocktail with tempo stem. Two outstanding pieces we would all like to own, were cigarette boxes. One was ebony with sterling silver Scotty Dog decoration and the other was crystal with a

frosted finish.

With the assistance of Dave Rankin, John demonstrated how black light can be of assistance in identifying glass. It is almost impossible to describe this with any accuracy. I can only encourage those of you who missed this meeting to attend future meetings.

Several pieces were brought in for Show and Tell. They included a Cut Wild Rose bowl, a large forest green hat, a Cambridge Art Pottery mug and a box of marbles. The Marble factory is reported to have been located two or three hundred feet from the Cambridge Glass Co.

These are just highlights --- come to the next meeting and enjoy the whole thing!

CAMBRIDGE WINS AGAIN

by Sue Rankin

For the second year in a row Cambridge glass won many ribbons at the Ohio State Fair. Held at the State Fair Grounds in Columbus, O., the fair ran for 12 days from Aug. 26 through Sept. 6. Each time we checked, the crowds were heavy with many people pausing to admire the glassware on display.

More than fifty pieces of Cambridge glass were entered in fifteen different categories, with Cambridge owners taking home thirty-one ribbons: 4 First, 5 Second, 8 Third, 7 Fourth and 7 Fifth.

Most of the entrants of Cambridge glass are members of National Cambridge Collectors. We particularly wish to congratulate our members on their success and also for taking the time, effort and expense of entering their glassware to further the exposure and appreciation of this quality glassware.

auction report

by Jack Rettig

The All Cambridge Glass Auction sponsored by the National Cambridge Collectors, Inc., was held on Saturday, August 21, 1976, in the Guernsey Catholic High School at Cambridge, Ohio.



An enthusiastic group of Cambridge glass collectors and dealers were in attendance from as far away as Florida and Oklahoma. The Auctioneers for this event were Col. Max Cater and Col. Dale Snode.

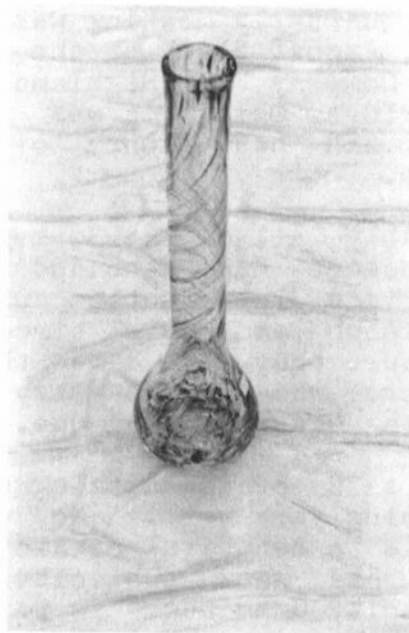


A VERY SMALL PORTION OF THE BEAUTIFUL DISPLAY OF CAMBRIDGE GLASS.

The display of glass was magnificent. Chairman Lynn Welker and his Auction Committee did an outstanding job of cataloging the glass, arranging the display and managing the Auction activities. Ownership of choice pieces was contested with lively bidding.

A 17" Mardi Gras free form bulbous vase (see picture next column) sold for \$85, an ebony 3" signed swan brought \$37.50, while a windsor blue two-light ring stem single candlestick went for \$60. Some other prices were: amber comport with willow etching \$75; peachblo 8½" draped lady

flower holder with rare 12" candlestick base \$85; 6" honeycomb rubina comport \$85; amber Geisha Girl with wood base \$125; amber nude stem claret \$45; rosepoint #3121 stem 5 oz. footed tumbler \$13; and a crystal Dresden Lady figure \$45.



MARDI GRAS

In all, 291 lots were sold in a six hour period. In general, the scarce pieces went at reasonable prices, the medium pieces went at bargain prices and the common pieces were more in demand and thus brought higher than usual prices.

This was the first year that mail bids were entertained and those who went to the effort to submit bids were successful in getting many good buys. The Auction was indeed an excellent place to increase your collection at a very fair price.

Better plan now to participate in our next Auction --- you may be rewarded with some beautiful Cambridge Glass!

etchings

by Phyllis Smith

The Aquarium pictured here was shown in an article on page 37 of the March 1930 issue of China, Glass and Lamps, with the following notation.

"This unusual aquarium has a bird in prominent position. It is etching No. 736 and is a product of the Cambridge Glass Company, Cambridge, Ohio. Made in various colors."



This same Aquarium may be seen on page 50 of the New 1930-34 Catalog Reprint.

PRICES here & there

by N.C.C. Members
and Phyllis Smith

Something new this month! Here is an article "By You - Our Members" - "For You - Our Members"! It is our sincere hope that you will all enjoy it, derive benefit from it -- and most important of all -- contribute to it. Without your contributions, this column cannot exist.

In response to the many requests we have had from our membership, the purpose of this article will be to present actual selling prices of Cambridge glass throughout the country.

This will not be a Gossip Column - we are not interested in who sold what to whom - we only want to know the price the item brought and the general locale in which it sold.

This month we have received reports from two members. Next month we hope to have reports from many more of you. This is one article you can contribute to with very little effort - just a brief note will be all that is necessary on your part.

From an Ohio member we hear that at an Auction near Cambridge, Ohio, in August (not the N.C.C. Auction) a crown tuscon vase sold for \$10 and pink Cleo etched tumblers sold for \$2 ea. (they were called depression). A signed Near-Cut footed bowl went for \$7. A large crown tuscon gold decorated shell footed dish was purchased for \$50 at another Ohio Auction.

In a private home in Cambridge, Ohio, an ebony Scotty bookend (in perfect condition) is being used as a door stop and a crystal one is being used as a window prop. The owner is aware of their identity and value, and "No, they are not for sale."

Our reporter from Maryland reports that the following prices were seen at a local show. (Please bear in mind these prices are "asking" prices and not necessarily the price for which they sold.) Crystal Calla Lily candlesticks \$27.50; crown tuscon three compartment relish dish \$48; set with large ruffled edge crystal bowl, Seagull flower holder and a pair of Calla Lily candlesticks for \$95; and a large mandarin gold bowl with Apple Blossom etching at \$35.

And here you have our first report. Please let us hear from YOU soon. The more information you send us - the more informative it will be for everyone.

When sending your report, please include the following information: description of item; price for which it sold (not asking price); general area of sale (city, state or area of country); and type of sale (show, auction, etc.). We will not use your name unless you request us to do so. Please send to the attention of: Phyllis Smith, Editor.

Upton Resigns Isaacs Named as Replacement

At their August 22nd meeting, your Board of Directors accepted the resignation of Charles Upton from their ranks and approved the appointment of Doris Isaacs to fill the remainder of his term.

Mr. Upton is one of the founders of the N.C.C. and it was with deep regret that his resignation was accepted. He has served as a member of the Board since its beginning in May, 1973.

Charles was our first President from 1973 to 1974. He has also served as Vice-President, Project Committee Chairman, 1975 Auction Chairman and as a member of many committees. Personal reasons were given for his resignation from the Board. His contributions to the Board will be greatly missed.

Doris Isaacs lives in Cambridge, Ohio. She was a nominee during the past election, and as such was a logical choice for this appointment. She is presently serving as this year's Program and Entertainment Committee chairperson.

(There will be an in depth interview with Doris in a later issue of the CRYSTAL BALL.)

QUARTERLY MEETINGS!

MARK YOUR CALENDAR NOW!!

You don't want to miss our Quarterly Meetings. Time and place will be announced later.

Sunday, November 14, 1976

Sunday, February 20, 1977

Convention, June 24, 25, 26, 1977

SEE YOU THERE!

Stems

by Frank and Vicki Wollenhaupt

October, 1931

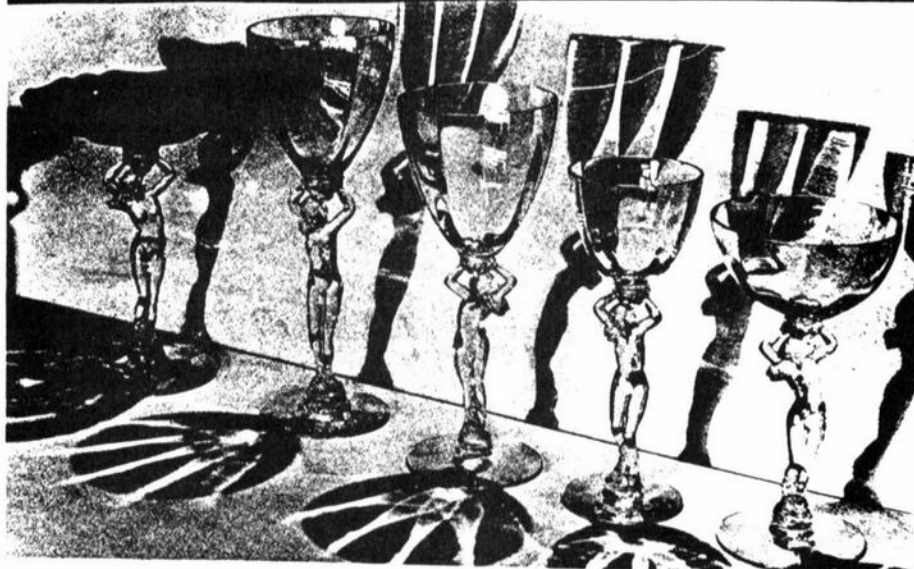
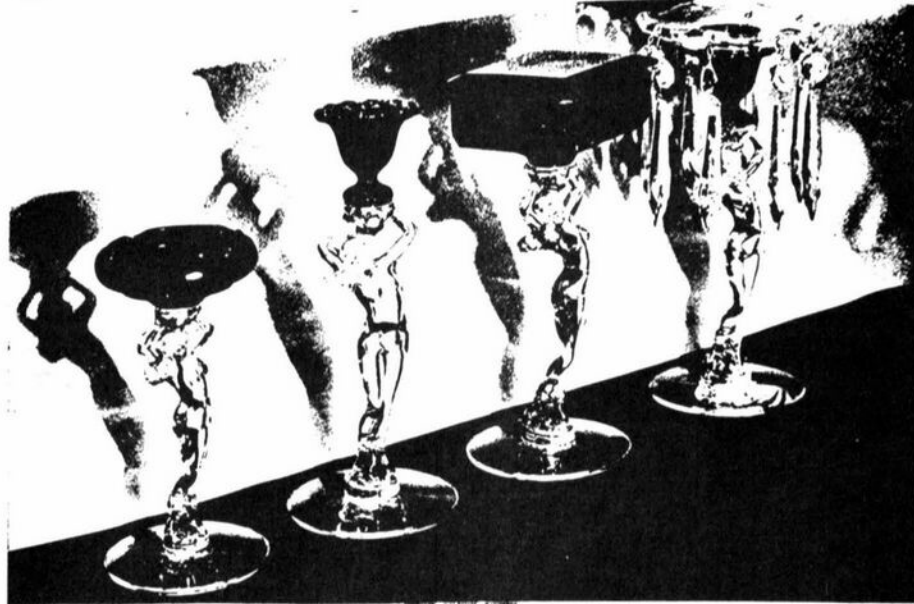
CHINA, GLASS AND LAMPS

Cambridge Announces—

THE
NO. 3011
FIGURE
STEM
LINE . . .



IT'S A
SURE
HIT!



Just the line for a Holiday leader. Comes in various color combinations with foot in crystal
Patent has been applied for on this outstanding and beautiful line. Get particulars now.

The Cambridge Glass Company, Cambridge, Ohio
NEW YORK—184 Fifth Avenue. CHICAGO—1547 Merchandise Mart.

This month finds us looking once again, at our beautiful #3011 Nude Lady stem.

The patent drawing and information on this stem was presented by the Hokey Pokey Study Club on page 6, Issue #16 of the CRYSTAL BALL.

The reissue aspect has been discussed by Dave McFadden in his "Is It Cambridge" columns, Issue #18, page 5 and Issue #20, page 7.

What we would like to clear up in this article is the misconception as to the size of the Nude stem and the size of the bowl.

The #3011 figure stem line was introduced to the trade in "China, Glass & Lamps", Oct., 1931. (See photo at left.) From the photo in the ad, it looks like the early stems had the line optic bowls and the later stems had the plain bowls.

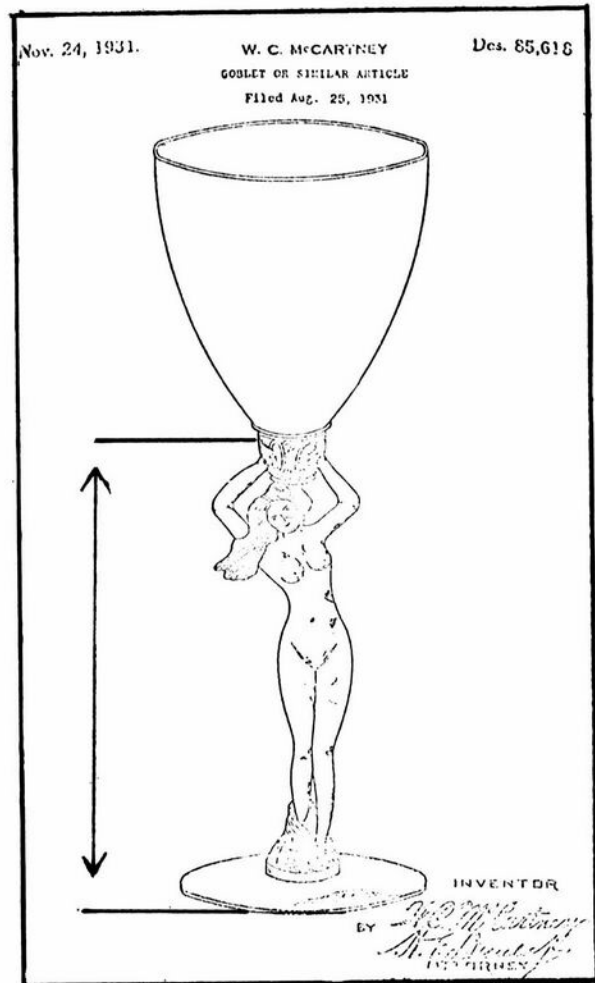
The Nude figure was made in three different sizes -- $4\frac{1}{4}$ " to $4\frac{1}{2}$ ", $5\frac{1}{4}$ " to $5\frac{1}{2}$ ", and $6\frac{1}{4}$ " to $6\frac{1}{2}$ ". The small quarter inch difference in each size is due to the hand finishing.

The items found on the different sized stems are as follows. Those found on the $4\frac{1}{4}$ " to $4\frac{1}{2}$ " stem are: #3011/11 - 3 oz. cocktail, /8 - $4\frac{1}{2}$ oz. sauterne, /10 - 3 oz. cocktail (different bowl), /9 - 3 oz. cocktail (different bowl), /12 - 3 oz. wine, /13 - 1 oz. brandy, /14 - 1 oz. cordial, and a 5" shell comport.

On the $5\frac{1}{4}$ " to $5\frac{1}{2}$ " can be found the #3011/2 - table goblet, /3 - saucer champagne, /5 - 6 oz. hock, /7 - $4\frac{1}{2}$ oz. claret, /6 - 5 oz. roemer, the covered sweetmeat, cigarette holder, covered cigarette box, ash tray, /25 - ivy ball, /29 - 4" mint (4" is size of shell top), /27 - $5\text{-}3/8$ " comport, and /28 - covered candy box.

On the $6\frac{1}{4}$ " to $6\frac{1}{2}$ " can be found the #3011/1 - banquet goblet, the 7" comport flared, 9" candlestick, 7" cupped comport, covered cigarette box, 9" candlestick with bobèche and prisms, /26 bud vase, and 7" comport shell top.

The stems are measured from the bottom of the stem foot (not the figure's foot) to the top of her hands, just under the bowl. The comports might measure just a bit taller because of the way they are finished. (see below)



The #3011 Line has its share of hard to find items. One of them is the /1 banquet goblet. You will see a lot of table goblets listed as ban-

continued on page 11

TRADEMARKS

BY DAVE RANKIN

In the August, 1975, Crystal Ball we discussed 3 paper labels, all of the same appearance as shown in figure 1. At that time we established tentative date ranges as follows:

Yellow paper (large and small)	1938-1954
Gold foil paper	1955-1958

We now have some new information with which to refine these date ranges.



figure 1

It concerns the large (28mm x 16mm) and the small (20mm x 12mm) yellow paper labels. A trade article early in 1938 discusses the new mark. Per the article: "The size has been increased a half and the arrangement and lettering has been enlarged.". This tells us that the large label came first since the preceding label was 16mm x 9mm.

To determine the transition date from the large label to the small, both labels were examined very carefully. A visible difference in the shape of the 'e' in CAMBRIDGE was detected. This shape difference was traced thru trade advertising which shows a transition in 1942. This gives us a date range 1938-1941 for the large yellow label and 1942-1954 for the small label.

Please let us know if you have seen any labels or marks we have not discussed.

BATH ROOM BOTTLES SUPREME

China, Glass & Lamps

June, 1930



*You Can't
Go Wrong With
A Set Like This*



Attuned to the moment, CAMBRIDGE wares offer style, quality and attractiveness to the highest degree. This Bath Room Set in Ebony and Crystal is but one of many specialties in popular colors and crystal and in combinations.

This Bath Room Set is composed of Ebony Tray with five bottles in Crystal with Ebony glass stoppers. The bottles are attractively etched. They may be had separately or in other colors if desired.

Club News

NATIONAL CAMBRIDGE COLLECTORS, INC.
Quarterly Meeting
August 21, 1976
Columbia Gas of Ohio Bldg.
Cambridge, Ohio

The meeting was called to order at 8:05 PM, by Vice-President David McFadden, with seven Board members and 29 Club members from three states in attendance. The minutes of the previous meeting held on June 27, 1976, were read by Janice Hughes and approved.

The Treasurers report was given by David McFadden, showing the Club has a balance of \$590.21 and the Museum Fund \$8,829.99. To date the income from the 1930-34 Cambridge Catalog Reprint is \$2,340.35. The N.C.C. Antique Show balance was \$1,700.11 and the Convention \$173.15.

COMMITTEE REPORTS

BY-LAWS: No report.

CONVENTION: No report. John Wolfe of Cambridge, Ohio, will be the chairman for the coming year.

CRYSTAL BALL: Doris Isaacs reported in the absence of Editor Phyllis Smith. The September CRYSTAL BALL will be mailed on August 29. Editor Smith reported she had prepared three issues of the CRYSTAL BALL (July, August and September) wrote 38 letters to members and mailed 122 back issues during July and August. She expressed a desire for more members to submit material for the CRYSTAL BALL.

MEMBERSHIP: Sue Rankin of Englewood, Ohio, will be the chairman for the coming year. She reported as of August 5, there are 293 \$10 members, 105 \$3 members and 4 Honorary members, for a total of 402. Thirty-three are delinquent at this time.

PROJECT: Dave Rankin of Englewood, Ohio, will be the chairman for the coming year. He reported the Club has two major events in the All Cambridge Glass Auction and the Antique Show and Sale. Possible projects are a Flea Market, other literature sales and commorative items. The committee is seeking any additional ideas from the membership.

PUBLICITY: Jack Rettig of Gahanna, Ohio, will be the chairman for the coming year. Previous chairman Frank Wollenhaupt reported ads for the 1930-34 Cambridge Catalog Reprint and membership have been sent to major publications.

STUDY GROUP ADVISORY: Frank Wollenhaupt from Dayton, Ohio, will be the chairman for the coming year. No report.

BUDGET AND FINANCE: Dave Rankin reported in the absence of President Smith. After a successful year of operation, the two year deficit was eliminated and the Club is now operating in the black. An additional investment of our cash was authorized by the Board of Directors in July, bringing our cash total in savings and certificates of deposit to almost \$9,000.

MUSEUM: Larry Hughes of Cambridge, Ohio, will be the chairman for the coming year. Janice Hughes reported for Chairman Hughes that to date, 326 copies of the 1930-34 Cambridge Catalog Reprint and 57 copies of the other books have been sold. Doris Isaacs donated a Ye Olde Ivy goblet with original sticker (CRYSTAL BALL issue #35, page 2 for description) to the Museum.

PROGRAM: Doris Isaacs of Cambridge, Ohio, will be the chairman for the coming year.

SPECIAL COMMITTEES

continued on page 11

TOUCH OF HISTORY

Jack and Sue Rettig

China, Glass & Lamps

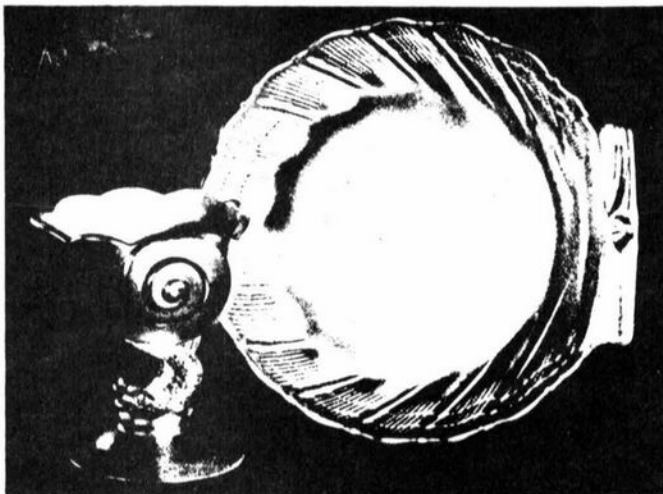
April, 1935

Seafood Service In "Sea Shell"

In distinctive variety, the new glassware line called "Sea Shell" from the Cambridge Glass Co., is one of the outstanding developments thus far in 1935. Motifs have been drawn from the many kinds of dwellers in the sea, from the very small shells to legendary maids of the deep. The sea maid design has been used very strikingly in larger service pieces, bowls and candlesticks.

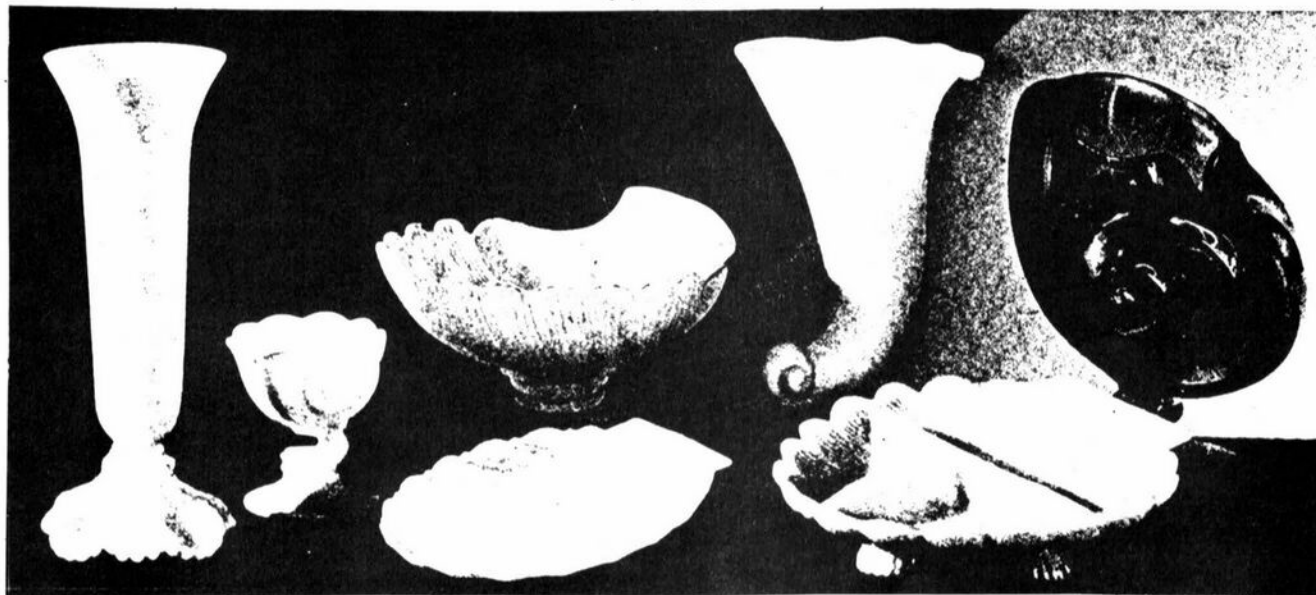
It was natural that additional pieces in the "Sea Shell" line should include items for use in serving seafood. Food is more appetizing when served attractively and what could add more to the enjoyment of a shrimp or lobster meat cocktail than the unique seafood cocktail glass shown in the illustration? This piece is highly reminiscent of the sea.

With the cocktail is shown the salad plate in the "Sea Shell" line. This design also has a tang of the seashore to it and like the others of the seafood items should be very welcome along the seashore and at



Summer resorts generally as warm weather comes. The seafood cocktail and salad plate are shown in the new Coral color, a new glass shade with a tinting of coral on bluish white. The "Sea Shell" line also is made in amber, carmen, royal blue, amethyst, green and crystal.

May, 1935



Stems

continued from page 7

quet goblets, but remember the banquet will be found on the tall stem only. Other hard to find items are the /5 hock, /6 roemer, /11 cocktail, /8 sauterne, /10 cocktail, /14 cordial, covered sweetmeat, /29 4" mint, /26 bud vase and the /28 covered candy box. These are difficult to find in any color.

The new N.C.C. Catalog Reprint shows a pretty good list of the #3011 stems and the different bowl shapes. From the catalog we also see that various etchings can be found on some of the nudes. To date we have only seen etchings on the nude comports and a few crown tuscan stems. It could be assumed that etchings on the various drinking items would be rated VERY hard to find.

In the past year or two, some very interesting things have shown up in the #3011 Line. We have seen them with silver overlay, signed Rockwell; with topaz bowls; with carmen and pistachio crackle tops; crown tuscan nudes with amber, dark green, amethyst and royal blue cocktail tops; and comports in all green, all pink and all mandarin gold.

If anyone has seen any other odd combinations on the #3011 stem, please let us know.

Classified

FOR SALE: Cambridge Glass Company Paperweight. Lettering Glassworks in gold. "Mint" \$25.00 Postage - Insurance Prepaid. MOSER, 2616 Fox Chase, Troy, Michigan 48098.

WANTED: WANTED - WANTED - WANTED -- CHIMNEY FOR CAMBRIDGE GLASS HURRICANE LAMP, Rock Crystal, cut in #1003 Manor pattern 9 1/2" tall. Top opening is 4 1/2", bottom neck is 1-3/4". Shape like #55, Welker Reprint II, page 21. Would settle for one that is uncut. Contact Helen Andrews, 300 N. 8th St., Cambridge, Ohio 43725.

WANTED: Cambridge - Lynbrook, Tempo, service pieces. Also Study Club in Orange County, Calif. Contact Beverly Hanson, 17352 Vinewood Avenue, Tustin, California 92680.

Club News

continued from page 9

ANTIQUÉ SHOW: No report.

AUCTION: Chairman Lynn Welker reported there were 118 paid admissions. Expenses were \$100 to the Guernsey Catholic Central High School and approximately \$150 for advertising. \$6,246 was collected with a net profit of \$900.

Program Chairman Doris Isaacs then introduced John Wolfe. He gave a very informative program on colors explaining different chemicals and why they were used. Black light was used showing the way different colors react.

A motion was made by Dale Snode to adjourn at 9:20 PM.

Refreshments were served by Doris Isaacs.

Janice Hughes
Secretary

WANTED



**BASE
for
DAISY
PUNCHBOWL**

W. C. Smith
4003 Old Columbus Rd
Springfield, Ohio
45502
(513-323-3888)

— SECOND ANNUAL ANTIQUE FLEA MARKET —

Reynoldsburg High School Gym

SUNDAY -- October 31, 1976

9 AM -- 5 PM

Admission 50¢ Refreshments Available


6699 E. Livingston Ave.
Reynoldsburg, Ohio

Off I-270 -- East of Columbus, Ohio

DEALERS



DIRECTORY

<p>ANTIQUE ALLEY 24815 Broadway Bedford, Ohio 44146 216-232-7739 ---- Marie Spagnola CAMBRIDGE GLASS ROYAL DOULTON</p>	<p>BENICIA ANTIQUE SHOP 305 First Street Benicia, California 94510 OPEN 11 AM - 5 PM Closed Monday</p>	<p>BLUE BELL ANTIQUES Route 19, Wexford, Pa. 15090 3 mi.S.Pa.Twp.Exit 3--Perry Hwy. OPEN 10AM-5PM - FRI.&SUN. to 9PM AL and MARY JANE MILLER</p>
<p>BLACK ROOSTER ANTIQUES 1018 Clark Street Cambridge, Ohio 43725 614-439-2549 ----- M. Sipe CAMBRIDGE GLASS - GENERAL LINE</p>	<p>Z. E. LOPES - 707-745-0978 VISIT HISTORIC BENICIA and its 28 shops Off Interstate #80 ----- ----- North of San Francisco</p>	<p>FINDER'S KEEPER'S ANTIQUES P.O. Box 303 Dayton, O. 45401 P.O. Box 16023 Columbus, O. 43216 513-254-2937 614-965-1906 SPECIALIZING IN CAMBRIDGE GLASS!</p>
<p>D'MARIE'S ANTIQUES Rt. #1, c/o Eastern Antique Mart Thornburg, Virginia 22565 703-582-5755 ----- Jim Rankin OPEN DAILY - EXCEPT MONDAY</p>	<p>GOLDSBERRY'S ANTIQUES 6336 H Ave. E. Kalamazoo, Michigan 49004 Ray and Jennie ---- 616-381-3013 SHOWS ONLY - CAMBRIDGE & HEISEY!</p>	<p>GEORGE HOFFMAN ANTIQUES 129 South 4th Street Newark, Ohio 43055 --- 614-345-8550 ---</p>
<p>MARY & WILBUR HENDERSON 303 Guilford Avenue Woodsfield, Ohio 43793 SHOWS Only -- 614-472-1133 SPECIALIZING IN CAMBRIDGE GLASS!</p>	<p>HERITAGE ANTIQUES Rt. #5, Cambridge, Ohio - 43725 614-439-324L TAKE N.8th St.Rd.(County Rd.#33) TURN LEFT AT RAILROAD TRACK.</p>	<p>PAUL & GINNY HENDERSON 1072 Green Street Iselin, New Jersey 08830 Open by Appointment-201-283-3181 SPECIALIZING IN CAMBRIDGE GLASS!</p>
<p>HOBBY HOUSE ANTIQUES Rt. #1, Cambridge, Ohio - 43725 614-432-6971 - Frank & Lena TAKE RT.#209 W.FROM CAMBRIDGE TO RT. #658 - NORTH 1½ MILES.</p>	<p>THIS 'N' THAT PLACE 101 South Street Chagrin Falls, Ohio -- 44022 Lue Koerper ----- 216-247-4938 OPEN THURS.-SAT. - 10 AM - 5 PM</p>	<p>MARGARET LANE ANTIQUES 2 E. Main Street New Concord, Ohio 43762 Lynn Welker ----- 614-826-4418 CAMBRIDGE GLASS MATCHING SERVICE</p>
<p>LEGEND INN  1225 W. Church St., Newark, Ohio 614-344-2136 43055 ----- Dine with us and see our CAMBRIDGE GLASS COLLECTION Open 4-11 PM Daily Closed Sunday and Holidays HAROLD & MILDRED WILLEY, OWNERS</p>		<p>NATIONAL CAMBRIDGE COLLECTORS, INC. P. O. Box #416 Cambridge, Ohio - 43725</p>
<p>PRESIDENTIAL COIN & ANTIQUE CO 6222 Little River Turnpike Alexandria, Virginia - 22312 Gail B. Levine ---- 703-354-5454 WANT LISTS SOLICITED-OPEN 6 DAYS</p>		<p style="text-align: center;">FIRST CLASS MAIL</p>
<p>WILMA SAXTON P. O. Box 43, Berlin, N.J. 08009 CAMBRIDGE, HEISEY, ROYAL DOULTON SHOWS & MAIL ORDER--609-767-1470 or Call TOLL FREE 800-257-8161</p>		

1976 AUCTION

NATIONAL CAMBRIDGE



COLLECTORS INC.

RESULTS

Held August 21, 1976,
at Guernsey Catholic
Central High School,
Cambridge, Ohio.

Please use this list
to fill in the blanks
on the Auction list
sent with your July,
1976 issue of CRYSTAL
BALL.

1. \$19.00 for all
2. 1 @ \$7 and
6 @ \$6.25 ea.
3. \$27.50
4. 5 @ \$3 ea.
5. \$25.00
6. \$11.00
7. \$9.00
8. \$5.00
9. \$10.00
10. \$4.00
11. \$20.00
12. \$20.00
13. \$15.00
14. \$25.00
15. \$25.00
16. \$85.00
17. 2 @ \$7 ea.
18. \$6.00
19. \$7.00
20. \$15.00
21. 2 @ \$15 ea.

- | | | | |
|-----|-------------------|------|------------------|
| 22. | \$6.00 | 75. | \$22.50 |
| 23. | \$8.50 Candlebase | 76. | \$10.00 |
| | \$6.00 2 holder | 77. | \$8.00 |
| | \$5.00 7" vase | 78. | \$10.00 |
| | \$1.00 8" " Chip | 79. | \$20.00 |
| 24. | 6 @ \$4.50 ea. | 80. | \$20.00 |
| 25. | 6 @ \$5.50 ea. | 81. | \$25.00 |
| 26. | 5 @ \$2.50 ea. | 82. | \$27.50 |
| 27. | \$7.00 | 83. | \$17.50 |
| 28. | \$37.50 | 84. | \$15.00 |
| 29. | \$13.00 | 85. | \$11.00 |
| 30. | 8 @ \$3.50 ea. | 86. | \$40.00 |
| 31. | \$75.00 | 87. | \$6.00 |
| 32. | \$27.50 | 88. | \$11.00 |
| 33. | 5 @ \$13 ea. | 89. | \$22.50 |
| 34. | \$26.00 | 90. | \$2.50 |
| 35. | \$3.00 | 91. | \$65.00 |
| 36. | \$16.00 | 92. | \$8.50 |
| 37. | \$8.00 | 93. | 4 @ \$8 ea. |
| 38. | \$14.00 | 94. | \$8.00 |
| 39. | \$7.00 | 95. | \$7.00 |
| 40. | \$20.00 | 95A. | \$30 set #2030 |
| 41. | \$27.50 | 96. | \$20.00 set |
| 42. | \$70.00 | 97. | \$6.00 |
| 43. | \$27.50 | 98. | \$50.00 |
| 44. | \$2.50 | 99. | \$27.50 sm. chip |
| 45. | \$8.50 | 100. | \$4.00 |
| 46. | \$8.00 | 101. | \$17.50 |
| 47. | \$16.00 | 102. | 5 @ \$9 ea. |
| 48. | \$17.50 | 103. | \$12.50 |
| 49. | 2 @ \$32.50 ea. | 104. | \$11.00 |
| 50. | \$10.00 | 105. | \$17.50 |
| 51. | \$17.50 for all | 106. | \$25.00 |
| 52. | \$2.00 | 107. | \$37.50 |
| 53. | \$7.50 | 108. | \$50.00 |
| 54. | 4 @ \$3 ea. | 109. | \$9.00 |
| 55. | 2 @ \$3.50 ea. | 110. | \$9.00 |
| 56. | 2 @ \$3 ea. | 111. | \$8.00 |
| 57. | 2 @ \$2 ea. | 112. | \$2.50 |
| 58. | \$10.00 | 113. | \$12.00 |
| 59. | \$17.50 | 114. | \$20.00 |
| 60. | \$30.00 | 115. | \$85.00 |
| 61. | \$30.00 | 116. | \$13.00 |
| 62. | \$30.00 | 117. | \$12.50 |
| 63. | \$75.00 | 118. | \$12.00 |
| 64. | 5 @ \$6 ea. | 119. | \$13.00 |
| 65. | \$20.00 | 120. | \$17.50 |
| 66. | \$85.00 | 121. | \$14.00 |
| 67. | 2 @ \$20 ea. | 122. | \$9.00 |
| 68. | 2 @ \$6 ea. | 123. | \$10.00 |
| 69. | \$27.50 | 124. | \$10.00 |
| 70. | \$12.00 | 125. | 4 @ \$15 ea. |
| 71. | \$22.50 signed | 126. | 2 @ \$32.50 |
| | \$17.00 unsigned | 127. | \$65.00 |
| 72. | \$60.00 | 128. | 6 @ \$6 ea. |
| 73. | \$10.00 | 129. | 3 @ \$7 ea. |
| 74. | \$22.50 | 130. | \$1.00 |

(over)

131.	\$4.50		188.	5 @ \$2 ea.	247.	2 @ \$13 ea.
132.	4 @ \$7 ea.		189.	\$6.00		1 damaged @ \$5
133.	\$12.00		190.	\$2.00	248.	\$6.00 for all
134.	\$8.00		191.	\$2.00 lemon plate	249.	\$9.00
135.	\$8.00		192.	\$1.00	250.	\$22.50
136.	\$7.50		193.	\$4.00	251.	\$11.00
137.	\$8.00		194.	\$5.00	252.	\$17.00
138.	\$3.50		195.	\$11.00	253.	\$45.00
139.	\$2.50		196.	\$4.00	254.	\$55.00
140.	\$6.00		197.	2 @ \$6 ea.	255.	\$2.50
141.	\$30.00		198.	\$7.50	256.	\$5.00
142.	\$6.00		199.	\$11.00	257.	\$7.00
143.	\$45.00		200.	8 @ \$5 ea.	258.	\$20.00
144.	\$9.00		201.	8 @ \$8 ea.	259.	2 sets @ \$5 ea.
145.	\$12.00		202.	2 @ \$13 ea.	260.	\$17.50
146.	6 @ \$12 ea.		203.	5 @ \$4 ea.	261.	\$45.00
147.	6 @ \$10 ea.		204.	8 @ \$8 ea.	262.	\$35.00
148.	\$85.00		205.	\$3.00	263.	\$75.00
149.	\$75.00		206.	\$9.00	264.	\$95.00
150.	\$20.00		207.	\$20.00	265.	\$50.00
151.	\$20.00		208.	\$15.00	266.	\$10.00
152.	4 @ \$4.50 ea.		209.	\$17.50	267.	\$3.50
153.	\$20.00		210.	\$20.00	268.	\$27.50
154.	\$22.50		211.	\$17.50	269.	\$30.00
155.	\$5.50		212.	\$20.00	270.	\$45.00 Rubina
156.	\$22.00 for all		213.	\$75.00	271.	\$13.00
157.	\$27.50		214.	\$20.00	272.	\$12.00
158.	\$9.00		215.	\$2.50	273.	\$13.00
159.	\$14.00		216.	\$6.00	274.	\$80.00
160.	\$22.50		217.	\$8.00	275.	\$7.00
161.	\$17.50		218.	\$30.00	276.	\$11.00
162.	\$22.50		219.	\$2.50	277.	\$15.50
163.	\$23.00 pair		220.	\$15.00	278.	\$5.00
164.	\$16.00		221.	\$20.00	279.	\$11.00
165.	\$20.00		222.	\$15.00	280.	\$17.50
166.	\$12.50		223.	\$30.00	281.	\$40.00
167.	\$15.00		224.	\$12.00 2 nicked	282.	2 @ \$4.50 ea.
168.	\$12.00		225.	\$8.00	283.	\$7.00
169.	\$20.00		226.	\$27.50	284.	\$4.00
170.	\$24.00		227.	\$15.00	285.	\$6.00
171.	\$17.50		228.	\$3.50	286.	\$3.50
172.	\$11.00		229.	\$25.00	287.	\$4.00
173.	2 @ \$5 ea.		230.	\$35.00	288.	\$40.00
174.	\$27.50		231.	\$2.00	289.	\$10.00
175.	\$8.00		232.	\$20.00	290.	\$10.00
176A.	\$8.00 #138		233.	\$1.00	291.	\$4.00 Sherbet, E. Lynbrook
176.	\$20.00		234.	\$8.00		
177.	\$42.50		235.	\$125.00		
178.	\$15.00		236.	\$13.00		
179A.	\$14.00 Amber		237.	\$14.00		
179.	\$17.50 #3400		238.	\$15.00		
180.	\$9.00		239.	\$22.50		
181.	\$8.00		240.	\$2.50		
182.	\$7.00		241.	\$4.00		
183.	\$9.00		242.	8 @ \$8 ea.		
184.	\$5.00		243.	2 @ \$12 ea.		
185.	\$2.00		244.	4 @ \$12 ea.		
186.	\$12.00		245.	\$5.00		
187.	2 @ \$3.50 ea.		246.	\$13.00		