

Cambridge



Crystal Ball

ISSUE NO. 45

JANUARY 1977

Published monthly by the NATIONAL CAMBRIDGE COLLECTORS, Inc.
To encourage and to report the discovery of the elegant and boundless product
of the Cambridge Glass Company, Cambridge, Ohio

Thoughts from the President - - - -

JANUARY 1977! The start of another new year and the half-way point of our club year. A time of taking inventory of our assets and our aspirations.

We entered this past calendar year with 365 members, bank balances of approximately \$2600, obligations of about \$2800, and a fine group of people that had a resolution to improve the overall conditions of the club.

By the end of our club year and the convention our situation had changed considerably. We had successfully sponsored our first Antique Show and Sale, we had released our first effort in the field of publications with the 1930-34 Reprint, and most importantly, we had achieved a financial condition of being "in the black". During this time, our membership total had remained nearly constant.

At the convention and the start of our new club year we established this as our "Year of Growth". A current inventory of our accomplishments regarding this growth provides some interesting facts.

Total membership at the present time stands just over 400.. A gain of only 10%. Our rate of drop outs has reached an all time low.

MEMBERSHIP RENEWAL NOTICE

If the date on your Address Label is -

This is your ¹⁻⁷⁷ last issue of the CRYSTAL BALL! Don't miss a single issue - RE-NEW YOUR MEMBERSHIP NOW!

FORM ENCLOSED FOR YOUR CONVENIENCE!

and our rate of new membership seems to be increasing.

Financially, we are making good progress. The Auction in August was very productive, the catalog reprint is selling very well, the Crystal Ball is receiving a fair income from advertising, and expenses are being controlled very closely. All resulting in a Museum Fund that is showing real encouragement.

Our various committees are working well and our image is growing. We are getting much more recognition for the club. The convention chairman states that this will be the "best yet". Show plans are under way, and we are starting plans for another auction.

From all of the preceding, we must conclude that we are achieving growth. The questionable aspect of this is the rate of our growth. Are we each doing all that we can? Are we each diligently seeking new members? Are we giving the various committees all of the support that we can? Are we each doing our full share?

It would take relatively little effort on the part of each of us to make and keep a resolution to answer each of the above questions in the affirmative.

It would be a very good means of saying "Thank You" and "Happy New-Year" to all of those people that have been working very hard in our behalf to make this the "Year of Growth".

HAPPY NEW YEAR
to each and everyone of you

Bill

Club News

Official publication of National Cambridge Collectors, Inc., a non-profit corporation with tax exempt status. Published once a month for the benefit of its members. Membership is available for individual members at \$10 per year and additional members (12 years of age and residing in the same household) at \$3 ea. All members have voting rights, but only one CRYSTAL BALL will be mailed per household.

Back issues of the CRYSTAL BALL are available to members only, at a cost of 60¢ ea. or 12 issues for \$7.

1976-77 Officers & Committee Chairpersons

PRESIDENT ----- William C. Smith
 VICE-PRESIDENT ----- David McFadden
 SECRETARY ----- Janice Hughes
 TREASURER ----- David McFadden

BUDGET & FINANCE ----- William C. Smith
 BY-LAWS -----
 CONVENTION ----- John Wolfe
 MEMBERSHIP ----- Sue Rankin
 MUSEUM ----- Larry Hughes
 PROGRAM & ENTERTAINMENT ----- Doris Isaacs
 PROJECT ----- David Rankin
 PUBLICITY ----- Jack Rettig
 STUDY GROUP ADVISORY ----- Frank Wollenhaupt

1977 ANTIQUE SHOW ----- Evelyn Allen
 1977 CAMBRIDGE AUCTION -----

CRYSTAL BALL Editor ----- Phyllis D. Smith

CLASSIFIED ADVERTISING RATES

5¢ per word \$1.00 minimum

We cannot mix type size in classified advertisements. Abbreviations and initials will count as words. Payment in full must accompany all ads.

DISPLAY ADVERTISING RATES

	Members	Non-Members
1/8 page -----	\$ 4.00 - - -	\$ 6.00
1/4 page -----	7.00 - - -	10.00
1/2 page -----	12.00 - - -	18.00
3/4 page -----	17.00 - - -	25.00
Full page -----	22.00 - - -	33.00

DEALERS DIRECTORY

1" ad ----- \$6.00 for 6 months

Cambridge CRYSTAL BALL assumes no responsibility for items advertised and will not be responsible for error in price, description or other information.

Advertising copy must be in our hands by the 15th of each month to assure publication in our next issue. Advertisements containing reproductions will not knowingly be accepted unless clearly stated.

PLEASE ADDRESS ALL CORRESPONDENCE TO

Cambridge CRYSTAL BALL
 National Cambridge Collectors, Inc.
 P. O. Box #416
 Cambridge, Ohio 43725

PLEASE NOTIFY US IMMEDIATELY OF ANY CHANGE
 IN YOUR ADDRESS!

Please enclose a self-addressed, stamped envelope when requesting information!!

NATIONAL CAMBRIDGE COLLECTORS, INC.
 Quarterly Meeting
 November 14, 1976
 Columbia Gas of Ohio, Cambridge, Ohio

The meeting was called to order at 1:50 PM by President Smith, with nine Board members, nineteen club members and eight guests in attendance. The minutes of the previous meeting held on August 21, 1976, were read by Janice Hughes and approved.

The Treasurer's report was given by David McFadden showing the club has a balance of \$2,781.32 and the Museum Fund \$8,968.29.

COMMITTEE REPORTS

BY-LAWS: No report.

CONVENTION: Chairman John Wolfe reported the 1977 Convention will be held at the Cambridge Country Club, Cambridge, Ohio. He has appointed Vicki Wollenhaupt, Joy McFadden and Larry Hughes to be in charge of the Display and also asked for additional volunteers for other convention functions.

CRYSTAL BALL: Editor Phyllis Smith reported she had mailed 283 copies of the CRYSTAL BALL in October and had received four articles for the December issue.

MEMBERSHIP: Chairman Sue Rankin reported that as of November 1st, there are 295 \$10 members, 108 \$3 members, 4 Honorary members for a total of 407. At this time 21 members are delinquent.

PROJECT: Chairman Dave Rankin reported work has begun on the revised Price Guide for the 1930-34 Catalog Reprint, with a tentative completion date of Jan., 1978.

PUBLICITY: Chairman Jack Rettig reported a new publicity campaign is in progress. Ads will appear in the major publications for nine months pertaining to the 1930-34 Catalog Reprint and membership.

STUDY GROUP ADVISORY: Chairman Frank Wollenhaupt reported there are still two active Study Groups and that he has written to several interested parties in other states.

Stems

by Frank and Vicki Wollenhaupt

Our Stem this month was patented on October 20, 1931, by Wilber L. Orme. It was assigned Design patent #85,389.

At first glance we would call this the #3121 stem (see Fig. 2), but this would be inaccurate. With this shape bowl, it is called the #3126 stem (Fig. 1).

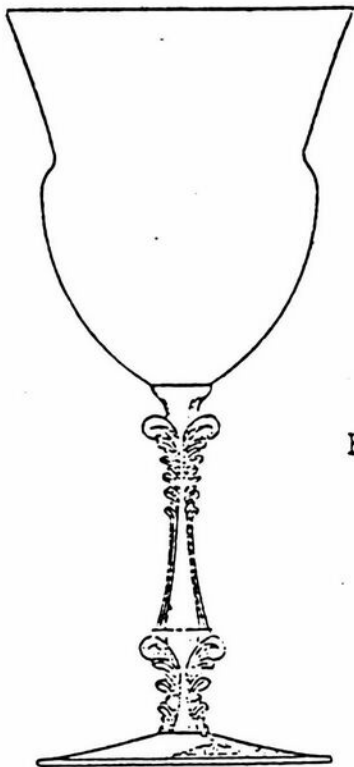


FIG. 1

3126 - GOBLET

As you can see from the two illustrations presented here, the #3126 and the #3121 stems are the same. The shape of the bowl determines the number of the stemware.

In the new 1930-34 Catalog Reprint the #3126 stemware plate etched "Portia" is shown on page 32-1. There are thirteen different sizes shown and they are: 7 oz. tall and 7 oz. low sherbets, 4½ oz. claret, 1 oz. cordial, 2½ oz. wine, 9 oz. goblet, 1 oz. brandy, 3 oz. cocktail, 4½ oz. oyster cocktail, and 10 oz., 13 oz., 5 oz. and 2½ oz. footed tumblers.

On page 32-2 of the catalog the #3121 stemware with plate etched "Portia" is also shown. It too shows thirteen sizes of stemware. There is a little variation in the number of ounces some bowls will hold - otherwise the list is the same as the #3126.

We have been unable to find any National advertising on these stems until 1937. The January, 1937 issue of China, Glass and Lamps carried an ad showing the #3121 stem with "the Cambridge Glass Co.'s newest etching, the Wild Flower". We are sorry that the quality of our photo is not good enough to reproduce here.



This stem and bowl are most often found with Rosepoint etching!

FIG 2

3121-GOBLET

These two stems were used with many variations of colors, rock crystal engravings (see pages 32-14 and 32-15 of the catalog reprint) and etchings.

The 1940 catalog shows both stems still being offered with very little change except in the number of ounces some of the bowls would hold.

This will be our last Stem article for awhile. If you have any requests for future articles or questions, please write us in care of the CRYSTAL BALL.

Cambridge Glass Co Has International Reputation for Artistic Craftsmanship

Long a leader in the manufacture of hand-made glassware of recognized superior quality, the Cambridge Glass Co., not only is one of the outstanding industrial concerns in southeastern Ohio but also has gained an international reputation for artistic craftsmanship.

Founded shortly after the turn of the century, its growth has paralleled and has had much to do with the industrial expansion of the community. Headed by A. J. Bennett, now deceased, who for nearly 40 years was the com-

Glass Pioneer



A. J. Bennett

pany's motivating and dominant figure, the plant soon became one of the city's largest and most stable manufacturing concerns and citizens point to it with pride. With employment of over 700 and an annual payroll exceeding one and a half million dollars, its operation is vital to the economy of the Cambridge community.

Under the guidance of Mr. Bennett, who was ably assisted by a staff of energetic, competent and loyal men (affectionately referred to by Mr. Bennett as "My Boys"), many of them serving in executive capacities today, the plant early started on a course designed to confine operations to the making of quality ware. And Cambridge ware ranks among the finest produced anywhere. It has a world-wide market and has always sold well wherever displayed. A large proportion of the company's employes are highly skilled craftsmen, who, of course,

have contributed no little to the success of the enterprise and likewise are well known prominent citizens of the community. Many families here have been associated with the glass industry since the early days of the company.

The company had a struggle for existence in its early days, but thanks to Mr. Bennett's courage and foresight it successfully weathered periods of adversity. "His Boys", in whom he placed a great deal of reliance, included his son-in-law, W. L. Orme, for many years vice president, and who today heads the company; W.C. McCartney, secretary-sales manager; O. J. Mosser, plant manager; G. Roy Boyd, treasurer; J. C. Kelly and D. T. Dayton. Among those of a younger generation who today hold responsible positions, with the company is Arthur (Bud) Orme, a grandson of the late A. J. Bennett.

The factory was erected by the National Glass Co., and in the latter part of 1901 the Cambridge Glass Co., was incorporated. Mr. Bennett, a buyer and importer of china and glass, was called from New York to take charge. The first piece of glassware was made in 1902.

Mr Bennett, who guided the company from its beginning until his death, Feb. 15, 1940, was not a manufacturer by training or experience. Born Jan. 18, 1866, in London, England, he came to this country when 16 and first was associated with the Jordan March Co., in Boston, where he was engaged in buying. From there he went to New York where he was associated with B. F. Hunt & Sons and gave his attention to work of importing china and glassware. However, soon after his arrival in Cambridge he proved his ability in the production field. Relatively few industrialists in the country today have met with as great a success as he did.

One of the chief reasons for the location of the factory here was because of the availability of natural gas.

The National Glass Co. faced financial difficulties in the panic year of 1907, resulting eventually in its bankruptcy. For three years the position and future of the Cambridge factory was uncertain.

Courageously, Mr. Bennett continued operations. In the scrambled financial trouble of the National Glass Co., it appeared at one time that the Cambridge com-



The Cambridge Glass Co.
(An Artist's Drawing)

Shown here is the reproduction of a medallion, which was struck (somewhere around 1915) to express pictorially the "Spirit of Cambridge," accord to J. Russell Lloyd, assistant postmaster.

pany would lose its factory. Mr. Bennett went to Byesville and with the assistance of the townspeople got control of a small plant there. It was smaller than the plant here, but it was a factory where Mr. Bennett was safe from the financial alarms surrounding the closing days of the National Glass Co. debacle.

After a long drawn-out fight with the receivers and bond holders of the National Glass Co., an arrangement was effected whereby Mr. Bennett purchased the factory with all the machinery and personal property of the Glass Co. This was a real burden to assume for any one individual, the total amount represented being under \$400,000 of which \$50,000 was paid in cash and the balance carried about 50 per cent in notes and mortgage bonds, maturing over a period of 10 to 15 years. This individual transaction was accepted by bankers because of their confidence in Mr. Bennett. All obligations, including the mortgage bonds, were retired several years ahead of the time limit.

Since its establishment the com-

pany has been progressive. It was one of the first concerns to adopt the group insurance plan. It did this in the early 1920's at considerable expense to the company.

Besides being always interested in the welfare of his employes, Mr. Bennett aided the community in many other ways. He was active in civic, religious and fraternal organizations and gave generously to assure the financial success of many endeavors. Many of his gifts were given with the understanding that they were not to be publicized. Among his outstanding contributions to the city is the children's wading pool at the City park.

Cambridge had an outstanding leader and benefactor in Mr. Bennett, who will never be forgotten, and his successors have proved their ability as successful industrialists.

This article has been submitted to us by Doris Isaacs.

PRICES here & there

by N.C.C. Members
and Phyllis Smith

HAPPY NEW YEAR! Hope your Christmas was the very best ever and that your stocking was filled to overflowing with Cambridge glass.

Our reporters have been busy this month and have sent us reports on all kinds of happy buys. We hope to be listing your new finds in this column next month!

From Oregon comes the report that an Ivy Ball with ebony top and crystal foot found a new home for \$27. Also two Block candlesticks - one large with gold trim and a smaller plain one were purchased for \$20 for the pair.

The following report was sent to us by a member who attended an Auction in Indiana. The following pieces were all crown tuscan -- Dolphin candlesticks (no prisms) \$75 for the pair; 9½" Cornucopia vases (pr.) at \$50; 6" two-lite candlesticks \$60 pr.; and Nude Lady candlesticks at \$85 a pair.

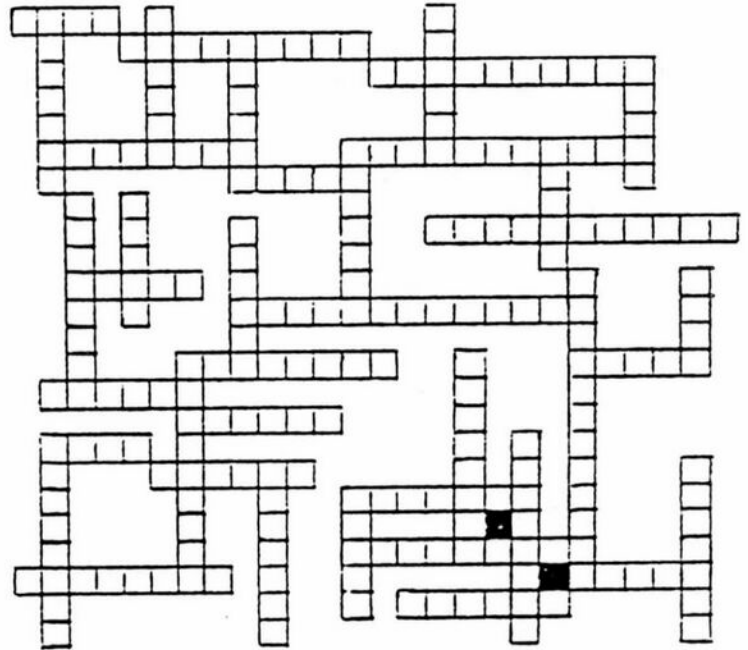
Wait now -- don't go away -- there's more! Still in crown tuscan a Flying Lady bowl at \$85; a Globe vase and a 4" Dolphin ftd. candlestick \$42.50 for both pieces; and a Nude stem Ivy Ball for \$65. Other good buys included a Jade console set for \$50; a Helio ftd. vase with gold trim \$32.50; a Primrose vase with gold trim \$25, Ebony candy jar \$10; Jade bud vase \$5; and one Ivory Dolphin candlestick at \$25. This Auction was held last summer - and don't we all wish we had been there? Of course if we had been there, we all know that prices would have been much higher.

This same reporter also reports that a more recent buying trip resulted in the purchase of a 5" crystal, 4-toed comport with Rosepoint etching at \$8 and a 2-lite candlestick with Rosepoint etching for \$4. They passed up an 80 oz. amethyst ball jug and four tumblers at a Florida flea market with an asking price of \$25. Oh well, we can't expect them to buy everything!! But we can certainly envy them their good buys.

From right here in Ohio comes the report continued on page 11 ---

△ Cambridge △ Color △ Criss △ Cross

Fit the words supplied into their proper places. The words are in alphabetical order according to the number of letters in each word.



- | | | |
|------------------|------------------|-------------------|
| <u>4 Letters</u> | POMONA | |
| JADE | RUBINA | |
| MILK | VIOLET | <u>9 Letters</u> |
| RITZ(blue) | WILLOW(blue) | MARDI GRAS |
| | | PISTACHIO |
| <u>5 Letters</u> | <u>7 Letters</u> | ROYAL BLUE |
| AMBER | AVACADO | |
| APPLE(green) | AZURITE | <u>10 Letters</u> |
| CORAL | CRYSTAL | HELIOTROPE |
| EBONY | ELEANOR | |
| IVORY | EMERALD | <u>11 Letters</u> |
| MOCHA | | CROWN TUSCAN |
| SMOKE | <u>8 Letters</u> | GOLD KRYSTOL |
| TOPAZ | AMBERINA | |
| | AMETHYST | <u>12 Letters</u> |
| <u>6 Letters</u> | DINATHUS(pink) | HEATHERBLOOM |
| CARMEN | MANDARIN(gold) | |
| COBALT | MULBERRY | <u>13 Letters</u> |
| FOREST(green) | PEACHBLO | MOONLIGHT BLUE |
| LA ROSA | PRIMROSE | |

NOTE: Words included in parentheses are explanatory, and DO NOT fit into puzzle.

- ANSWER NEXT MONTH -

submitted by Paul Henderson

Patterns

by Bill Smith

Caprice. Crystal Beauty in a SWIRL of LIGHT

"Like a sun-lit font welling from cool, quiet depths, Caprice fascinates the eye with brilliant, rippling beauty. A truly classic design by Cambridge. It is today's most popular pattern. Impressive in any setting, practical, modestly priced. Choose from over 150 open stock pieces in Crystal, Moonlight Blue, or La Rosa Pink."

(From the ad cut used by Cambridge for the 1938 ads in national publications.)

As a continuation to the last issue, we again have enclosed catalog pages reprinted from the 1940 catalog. We have attempted to facilitate your use of these pages for reference by printing them on both sides of the same sheet. This permits the removal of these pages for collection as a Caprice Reference without the loss of other Crystal Ball information. We are planning to provide all of the catalog type materials in this manner.

Using only our 1940 Catalog and Price List we have a total of ten pages of pictured items and two pages of prices and colors. This would indicate that six to eight issues will be required for the presentation without even considering the information provided by later catalogs and price lists or the possibilities of additional earlier information. Your response will be the final determination of how much Caprice is presented.

Knowing full well that there are many of you who are not Caprice collectors, we will mention at this time that our expectations are that other patterns will be covered in a like manner in the future. We will also be including information in this article that is applicable to other patterns.

The following is an example of information that could be applied to any pieces that the company produced in 1940.

INFORMATION ABOUT COLORS

Colors in which our glassware is made are not specified in the catalog but are clearly indicated in the price list. Abbreviations for the colors used in many instances are as follows:

- Crys - Crystal - Clear colorless Crystal
- A - Amber - A true Amber-brown
- Mo - Mocha - Delicate pastel Amber tint, lighter than our Amber
- Em - Emerald - Light transparent Green
- Pi - Pistachio - Delicate pastel green, lighter than Emerald
- Fg - Forest Green - Dark Green
- Dp - Dianthus Pink - Light transparent Pink
- LaR - La Rosa - Delicate pastel pink, Lighter than Dianthus Pink
- ML - Moonlight Blue - Delicate pastel Blue
- Rb - Royal Blue - Dark Blue
- Ame - Amethyst - Dark purple or Mulberry
- GK - Gold Krystol - Transparent Golden Tint
- Carmen - Clear brilliant Ruby
- Coral) Opaque Shell Pink
- Crown Tuscan)
- Ebony - Black
- *Varitone - Combination sets of Moonlight, La Rosa, Mocha, and Pistachio.
- *Rainbow - Combination sets of Amber Royal Blue, Forest Green, and Amethyst.

* The October 16, 1943 letter mentioned in our last article, states that;

"as of this date - Rainbow Sets will be made up in a solid (all one color) either Amber or Amethyst. Varitone Sets will be made up all of one color, either Moonlight Blue or Gold Krystol!"

From another national ad - (1936?)

CAPRICE - - -

like the enchantment of RIPPLING WATER.

Twirl a Caprice goblet in your fingers and watch the waves of light that play and ripple in it's lovely crystal. Never before has any crystal achieved such life and movement - - or held such fascination.

Next month - - more catalog pages and more interesting facts.

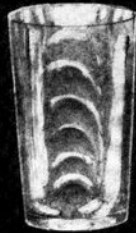
Collect CAPRICE



Caprice



310—12 oz. Ice Tea



310—10 oz. Tumbler, Tall



310—10 oz. Tumbler, Table



310—7 oz. Old Fashioned Cocktail



310—5 oz. Fruit Juice



300—9 oz. Goblet



300—6 oz. Tall Sherbet



300—5 oz. Parfait



300—3 oz. Cocktail



300—4½ oz. Claret



300—6 oz. Low Sherbet



300—4½ oz. Oyster Cocktail



300—Finger Bowl and Plate



300½—12 oz. Ftd. Tumbler (on Stem)



300—12 oz. Ftd. Tumbler



300—10 oz. Ftd. Tumbler



300—5 oz. Ftd. Tumbler



300—2½ oz. Wine



300—1 oz. Cordial



300—2½ oz. Ftd. Tumbler

Patent Numbers 98794, 98825, 98993, 99448

JANUARY 1, 1940



Caprice



70—7 in. Candlestick w/prism

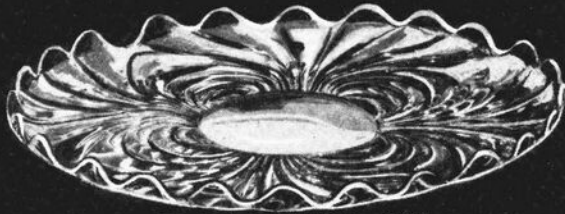


65/70—3 pc. Table Centre

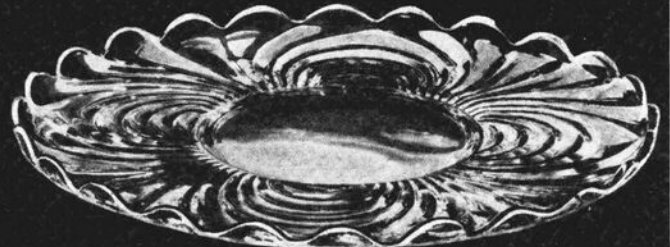


70—7 in. Candlestick w/prism

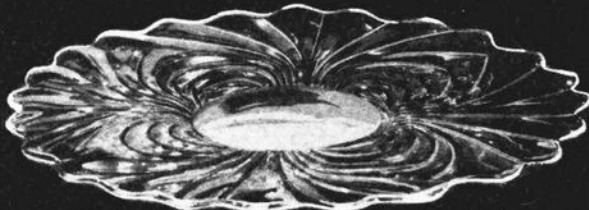
65—11 in. 2 Hld. Oval Bowl, 4 Ftd.



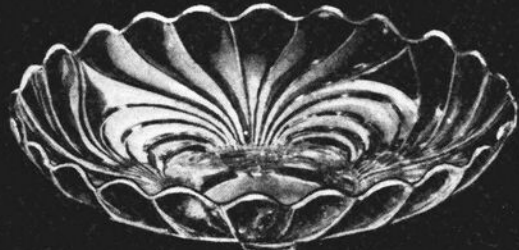
33—14 in. Cabaret Plate, 4 Ftd.
also
32—11 in.



35—16 in. Cabaret Plate



28—14 in. Plate, 4 Ftd.
also
26—11½ in.



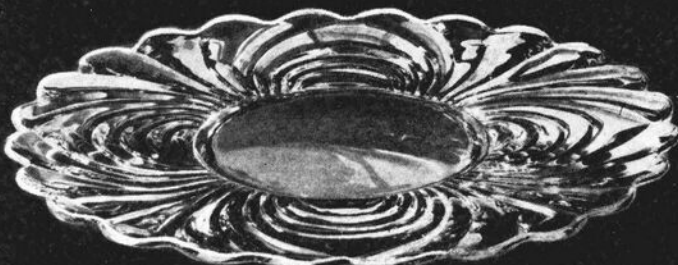
Caprice 82—13½ in. Salad Bowl, 4 Ftd.
Also
81—11½ in.



Caprice 80—13 in. Salad Bowl



80/30/609—4 pc. Salad Set



30—16 in. Plate

Patent numbers 98794, 98825, 98993, 99448.

JANUARY 1, 1940

Club News

continued from page 2

MUSEUM: Chairman Larry Hughes reported to date Collectors Books of Paducah, Kentucky has sold 1054 copies of the 1930-34 Reprint and the club has sold 439. Charles Upton has donated two copies each of the Price Guide to the Bennett Color Book to the Museum.

BUDGET AND FINANCE: President Bill Smith reported changes have been made in the budget and these have been approved by the Board.

PROGRAM; Chairman Doris Isaacs reported on plans to have a speaker at each membership meeting. Anyone with ideas for programs or speakers are asked to contact her or John Wolfe.

SPECIAL COMMITTEES

1977 SHOW AND AUCTION: No chairmen have been appointed at this time.

OLD BUSINESS

None.

NEW BUSINESS

President Smith announced the appointments of Ruby Landman of Ashland, Ohio to fill the unexpired term of Board member Evelyn Allen, and Doris Isaacs of Cambridge, Ohio to fill the unexpired term of Board member Charles Upton. Both Allen and Upton resigned as of August 22, 1976.

President Smith presented Chairman Larry Hughes with a Blue Willow dinner plate donated to the Museum by Charles Upton.

President Smith reported he will be contacting various people regarding appointments to the Nominating committee.

Program Chairman Doris Isaacs introduced John Wolfe who was in charge of the display items at the meeting. He in turn introduced Lynn Welker who gave a very informative program on the RARE and UNUSUAL Cambridge glass. Mr. Welker then introduced Mrs. John (Elizabeth) Degenhart who spoke on "The Miracle of Glass". (see the December, 1976 issue of the CRYSTAL BALL)

continued ----

A motion was made by David McFadden to adjourn at 3:15 PM.

Refreshments were made by Doris Isaacs and served to us by Everett and Shirley Patterson.

Janice Hughes
Secretary

STUDY Club News

----- CAMBRIDGE SQUARES -----

The Cambridge Squares met November 20th in the home of Everett and Shirley Patterson of Cambridge, Ohio.

Since Everett has been collecting hats for the past three years, it was only natural that our topic for the evening be hats. He has a total of 125, of which 15 are Cambridge. His first buy was a large dark emerald green Tally-Ho hat. Cambridge hats were made in a variety of patterns, colors and some had etchings. One of the very early ones, the Saratoga (ref: 1903 Catalog Reprint by the Bennett's) is sometimes found as a souvenir item.

"Show and Tell" items included a carmen hat ashtray (Tally-Ho pattern), a black ebon ashtray decorated with gold birds, a Nautilus shell with floral decoration and a crown tuscan vase with red enamel trim and the acid stamp signature (ref: April, 1976 CRYSTAL BALL, page 11).

Next meeting will be held in January.

Submitted by Doris Isaacs

Classified

FOR SALE: N. C. C. BUMPER STICKERS. 50¢ each or 3 for \$1. Send large SASE. Cambridge Squares, P. O. Box 416, Cambridge, Ohio 43725.

WANTED: CAMBRIDGE GREEN CLEO PATTERN. Interested in any and all pieces. Martha Cook, Box 205, Kevanna, Indiana 46939.

WANTED: CHANTILLY PATTERN. Have salads, goblets, creamer, sugar, relish dish. Need rest. Bernice May, 4038 Queen Ave., North Minneapolis, Minnesota 55412.

TOUCH OF HISTORY

Jack and Sue Rettig

China, Glass & Lamps

“Ye Olde Ivy” Stemware

... ensembled with Maddock & Millers' dinner service. Charmingly decorative in its engaging ivy motif ... accentuating fine plate etching ... set off by ringed stems ... this beautiful thin glassware offers another flattering tribute to the Cambridge quality and distinction.

The Olde Ivy seems to be very scarce, but imagine the beauty of a table set with dinnerware and stems. The Windsor is even more scarce, it has eluded us completely! The etching depicts an old English castle with overhanging trees. (It sounds out of proportion, but that is how it looks.) There is a flag on top of the castle tower on the pitcher. If anyone has a piece of Windsor etching, it would be a lovely item to share at a quarterly meeting.



PRICES

continued from page 5

that a member purchased a 9 oz. Georgian tumbler for \$5; 6 Arcadia water goblets for \$5 (I think she meant \$5 for all 6); a pair of crystal Caprice candlesticks with prisms \$12; a Peachblo 2-kid figure flower holder for \$35; and a pair of Topaz perfume bottles for \$12 (one perfect & one had a broken stem on the stopper). As our reporter remarked, "That's what makes collecting Cambridge fun and keeps you hunting." how true, how true!

From the Northwestern section of our country, we received the following report. As you read these prices, you might think you are dreaming - but trust us - these are the prices exactly as sent to us.

How about a crown tuscan 3" swan for \$6?? And that's just the start! A Cambridge arms four-lite arm for \$3; a crystal Caprice sugar & creamer on tray \$2; pair of low crystal Caprice candleholders \$1; #3400 shaker with Rosepoint etching \$1; dark emerald Nautilus decantor-no stopper-for \$5; crystal Gadroon relish with Farber holder and original label \$4.50. How do you like it so far?? Read on - - - - -

Dark emerald Caprice small vase 50¢; green Tally-Ho ice bucket \$6.50; set of 4 #8858 2 oz. Amber tumblers \$2 for all of them. A Primrose single tall candlestick \$1.50 and how about a #3400 3-part relish etched Minerva - gold encrusted for \$4. Wow, bet that is a beauty!! A Yardley jar for \$1; an Azurite three footed bowl \$1 and a Carmen Ivy Ball with crystal foot for \$10.

Isn't it nice to know that once in awhile it is still possible to find a steal??

Getting back to more realistic prices - how about an Azurite bowl with black etched Dragons for \$300. Believe that is probably a good buy -- how many have you ever seen being offered for sale?

From southern Ohio our reporter informs us of the following buys made at an Antique Shop during November. Etched Daffodil footed juice for \$6.50; 6 Rosepoint #3500 cups and saucers at \$18 per set; Moonlight blue Everglades creamer \$10; one pink Cleo signed 8" plate \$5; one Rosepoint #3500 luncheon plate \$10; and two blue Caprice Alpine sherbets at \$8 each.

This is all the prices for this month - if we didn't include your prices this month, look for them next month!

Please remember as you read this column that the fantastic buys that many of us are bragging about, are not what we should expect to pay for a similar piece. Everyone finds a "once in a lifetime" buy now and then - and they are fun to read about! But we all know that a crown tuscan 3" swan at \$6 is not a realistic price, when our 1930-34 Catalog Price Guide lists them at \$30.

Please let us hear about the piece you had to pay a little higher price for - but you bought it anyway - because you felt lucky to have found it! After all, Cambridge is becoming harder and harder to find.

Let's all share these realistic prices. as well as our "fun" steals!

By the way - a word to the wise. Don't by pass any amber swans - they are very hard to find - and the price is getting higher, and higher every day!

9th Annual Antiques Show and Sale

Sponsored by

Beta Sigma Phi Sorority of Reynoldsburg, Ohio

Saturday, February 19, 1977 - 11 a.m. - 9 p.m.

Sunday, February 20, 1977 - 12 Noon - 6 p.m.

Arts and Crafts Building - Ohio State Fairgrounds

Exit 17th Ave. I-71 Columbus, Ohio

Show Chairman
Mrs. Murray Youtz
1519 Loxdale Drive

Benefit: Pilot Dogs, Inc.

Donation \$1.25

Show Manager
George Hoffman
129 S. Fourth Street
Newark, Ohio

Reynoldsburg, Ohio 43068

SNACK BAR

DEALERS



DIRECTORY

<p>ANTIQUE ALLEY 24815 Broadway Bedford, Ohio 44146 216-232-7739 ---- Marie Spagnola CAMBRIDGE GLASS ROYAL DOULTON</p>	<p>BENICIA ANTIQUE SHOP 305 First Street Benicia, California 94510 OPEN 11 AM - 5 PM Closed Monday</p>	<p>BLUE BELL ANTIQUES Route 19, Wexford, Pa. 15090 3 mi.S.Pa.Twp.Exit 3--Perry Hwy. OPEN 10AM-5PM - FRI.&SUN. to 9PM AL and MARY JANE MILLER</p>
<p>BLACK ROOSTER ANTIQUES 1018 Clark Street Cambridge, Ohio 43725 614-439-2549 ----- M. Sipe CAMBRIDGE GLASS - GENERAL LINE</p>	<p>Z. E. LOPES - 707-745-0978 VISIT HISTORIC BENICIA and its 28 shops Off Interstate #80 ----- ----- North of San Francisco</p>	<p>FINDER'S KEEPER'S ANTIQUES P.O. Box 303 Dayton, O. 45401 P.O. Box 16023 Columbus, O. 43216 513-254-2937 614-965-1906 SPECIALIZING IN CAMBRIDGE GLASS!</p>
<p>D'MARIE'S ANTIQUES Rt. #1, c/o Eastern Antique Mart Thornburg, Virginia 22565 703-582-5755 ----- Jim Rankin OPEN DAILY - EXCEPT MONDAY</p>	<p>GOLDSBERRY'S ANTIQUES 6336 H Ave. E. Kalamazoo, Michigan 49004 Ray and Jennie ---- 616-381-3013 SHOWS ONLY - CAMBRIDGE & HEISEY!</p>	<p>GEORGE HOFFMAN ANTIQUES 129 South 4th Street Newark, Ohio 43055 --- 614-345-8550 ---</p>
<p>MARY & WILBUR HENDERSON 303 Guilford Avenue Woodsfield, Ohio 43793 SHOWS Only -- 614-472-1133 SPECIALIZING IN CAMBRIDGE GLASS!</p>	<p>HERITAGE ANTIQUES Rt. #5, Cambridge, Ohio - 43725 614-439-3241 TAKE N.8th St.Rd.(County Rd.#33) TURN LEFT AT RAILROAD TRACK.</p>	<p>PAUL & GINNY HENDERSON 1072 Green Street Iselin, New Jersey 08830 Open by Appointment-201-283-3181 SPECIALIZING IN CAMBRIDGE GLASS!</p>
<p>HOBBY HOUSE ANTIQUES Rt. #1, Cambridge, Ohio - 43725 614-432-6971 - Frank & Lena TAKE RT.#209 W.FROM CAMBRIDGE TO RT.#658 - NORTH 1 1/2 MILES.</p>	<p>THIS 'N' THAT PLACE 101 South Street Chagrin Falls, Ohio -- 44022 Lue Koerper ----- 216-247-4938 OPEN THURS.-SAT. - 10 AM - 5 PM</p>	<p>MARGARET LANE ANTIQUES 2 E. Main Street New Concord, Ohio 43762 Lynn Welker ----- 614-826-4418 CAMBRIDGE GLASS MATCHING SERVICE</p>
<p>LEGEND INN  1225 W. Church St., Newark, Ohio 614-344-2136 43055 ----- Dine with us and see our CAMBRIDGE GLASS COLLECTION Open 4-11 PM Daily Closed Sunday and Holidays HAROLD & MILDRED WILLEY, OWNERS</p>	<p>A. SPRINGBORN P. O. Box E. G. #962 Melbourne, Florida - 32935 Shop #34, Webster, Florida OPEN EVERY MONDAY 305-254-7439</p>	<p>YOU CAN ADVERTISE YOUR ANTIQUE SHOP HERE! 1 inch - \$6 for six months</p>
<p>PRESIDENTIAL COIN & ANTIQUE CO 6222 Little River Turnpike Alexandria, Virginia - 22312 Gail B. Levine ---- 703-354-5454 WANT LISTS SOLICITED-OPEN 6 DAYS</p>	<p>NATIONAL CAMBRIDGE COLLECTORS, INC. P. O. Box #416 Cambridge, Ohio - 43725</p>	
<p>WILMA SAXTON P.. O. Sox 43, Berlin, N.J. 08009 CAMBRIDGE, HEISEY, ROYAL DOULTON SHOWS & MAIL ORDER--609-767-1470 or Call TOLL FREE 800-257-8161</p>	<p style="text-align: center;">FIRST CLASS MAIL</p>	
<p>HOFF - HAVEN ANTIQUES 21 Half Moon Lane Tarrytown, New York 10591 No Lists-Shows-Mail-914-631-2140 CAMBRIDGE, Rose In Snow Fostoria</p>		