

# Cambridge



# Crystal Ball

ISSUE NO. 49

MAY 1977

Published monthly by the NATIONAL CAMBRIDGE COLLECTORS, Inc.  
To encourage and to report the discovery of the elegant and boundless product  
of the Cambridge Glass Company, Cambridge, Ohio

Thoughts from the President - - - -

There is still time to make your plans to be with the group at Cambridge, June 24, 25 and 26. What a weekend it will be.

The Convention Committee and the Show Committee are rapidly finalizing their plans to provide us all with a very active weekend.

From Friday afternoon when registration for the Convention begins right thru until Sunday evening at six, when the Show closes, there will be activities to keep us busy.

The overall concept of the Convention and of the Show will be much the same as last year. The Convention activities centering at the Cambridge Country Club and the Show at the Guernsey Catholic High School.

Registration for the Convention will be at Knights Inn Motel which is right at the I-70 and State Route 209 intersection. Both the school and the Country Club are close by on S. R. 209.

Elsewhere in this issue, you will find the listings for the various Motels that are in the immediate area of the Convention and Show. There is also a Campground at this

intersection for those who would prefer to utilize this type of facility.

We are still hoping that this will in fact become our "Year of Growth" in the club. As of our last Board of Directors meeting the membership total stood at 452. It would be a terrific way to end this Club year if we could go over the 500 mark. We only need 50 new members to accomplish this - please do what you can to help us reach our goal!

Are you still overlooking the Study group as a means of obtaining maximum knowledge and enjoyment from your collection??? Let us know if we can be of assistance to you in organizing a group. It only takes three interested members!

To those of you who will be having consignments for the August auction, please start soon to make these facts known to the Auction Committee. Just address your correspondence to Lynn Welker. A mail bid procedure will be available again this year for those who cannot attend.

To the many friends that have not received answers to recent letters, I wish to extend my apologies. Due to recent health problems which included a stay in the hospital, I have fallen quite far behind in my correspondence. If you will please bear with me, I promise that I will get all of your letters answered. Hopefully before another issue of this newsletter.

*Bill*

#### MEMBERSHIP RENEWAL NOTICE

If the date on your address label is - - - **4-77**

This is your last issue of the Crystal Ball!  
RE-NEW NOW!! Don't miss a single issue.

# CAMBRIDGE CRYSTAL BALL

Official publication of National Cambridge Collectors, Inc., a non-profit corporation with tax exempt status. Published once a month for the benefit of its members. Membership is available for individual members at \$10 per year and additional members (12 years of age and residing in the same household) at \$3 ea. All members have voting rights, but only one CRYSTAL BALL will be mailed per household.

Back issues of the CRYSTAL BALL are available to members only, at a cost of 60¢ ea. or 12 issues for \$7.

## 1976-77 Officers & Committee Chairpersons

PRESIDENT ----- William C. Smith  
 VICE-PRESIDENT ----- David McFadden  
 SECRETARY ----- Janice Hughes  
 TREASURER ----- David McFadden

BUDGET & FINANCE ----- William C. Smith  
 BY-LAWS -----  
 CONVENTION ----- John Wolfe  
 MEMBERSHIP ----- Sue Rankin  
 MUSEUM ----- Larry Hughes  
 PROGRAM & ENTERTAINMENT ----- Doris Isaacs  
 PROJECT ----- David Rankin  
 PUBLICITY ----- Jack Rettig  
 STUDY GROUP ADVISORY --- Frank Wollenhaupt

1977 ANTIQUE SHOW ----- Evelyn Allen  
 1977 CAMBRIDGE AUCTION ----- Lynn Welker

CRYSTAL BALL Editor ----- Phyllis D. Smith

## CLASSIFIED ADVERTISING RATES

5¢ per word \$1.00 minimum

We cannot mix type size in classified advertisements. Abbreviations and initials will count as words. Payment in full must accompany all ads.

## DISPLAY ADVERTISING RATES

	Members	Non-Members
1/8 page -----	\$ 4.00	\$ 6.00
1/4 page -----	7.00	10.00
1/2 page -----	12.00	18.00
3/4 page -----	17.00	25.00
Full page -----	22.00	33.00

## DEALERS DIRECTORY

1" ad ----- \$6.00 for 6 months

Cambridge CRYSTAL BALL assumes no responsibility for items advertised and will not be responsible for error in price, description or other information.

Advertising copy must be in our hands by the 15th of each month to assure publication in our next issue. Advertisements containing reproductions will not knowingly be accepted unless clearly stated.

PLEASE ADDRESS ALL CORRESPONDENCE TO

Cambridge CRYSTAL BALL  
 National Cambridge Collectors, Inc.  
 P. O. Box #416  
 Cambridge, Ohio 43725

PLEASE NOTIFY US IMMEDIATELY OF ANY CHANGE  
 IN YOUR ADDRESS!

Please enclose a self-addressed, stamped envelope when requesting information!!

# STUDY Club News

## HOKEY -- POKEYS

The February meeting of the Hokey-Pokey Study Club was held March 4th, in the home of Frank and Vicki Wollenhaupt, Dayton, Ohio. There were eight members present.

A most interesting "Quiz" was given us by our hosts on the subject of Cambridge candy containers. We all discovered that we need to do a great deal of studying on this subject. It is a lot harder than you would think to recognize a Cambridge container when it is mixed in with others. The winner was Sue Rankin.

Our discussion for the evening centered around future study and which direction we should plan on following. It was decided that we would try our hand at photographing several pieces from our collections at our next meeting.

Submitted by Phyllis Smith

The March meeting of the Hokey-Pokey Study Club was held on Sunday, March 20th, in the home of Bill and Phyllis Smith. Other members present were: Dave and Sue Rankin, Dave and Joy McFadden, and Frank and Vicki Wollenhaupt.

Our meeting was devoted to photography and naturally various pieces of Cambridge glass were the subjects. Discussion was held concerning our entries of Cambridge glass at the Ohio State Fair. Everyone was eager to enter the new "Carmen" category.

Our next meeting will be held in the home of Dave and Sue Rankin, Englewood, Ohio. Photography will be continued.

Submitted by Vicki Wollenhaupt

## CAMBRIDGE SQUARES

The Cambridge Squares Study Club met April 15th in the home of Josephine and Gerald

----- continued on page 8

# Cambridge RAINBOW

by Lynn Welker

This month's color conversation is about Violet - an extremely beautiful, lavender, opaque color.

It is a late color, but one of the hardest to find in the Cambridge spectrum of colors. Many confuse it with the earlier Heliotrope, but distinguishing the two is relatively easy. Violet has a definite blue cast which Heliotrope does not.

Heliotrope was made in very plain shapes with the exception of the Ram's Head bowl, Doric candlesticks and the matching 8" plate. Violet was made in strictly later patterns such as Mt. Vernon, Everglades and Jenny Lind. (see photo #1) The only exception to this is the plain Hambone ashtray made in Violet. This is a late shape compared to the long production of Cambridge glass.

Violet is most often found in the Everglades pattern. It has been seen in several size bowls (all being of the Leaf pattern rather than a floral one). However, no candlesticks have been sighted as yet! The Leaf covered candy dish was available in Violet and is one of the most desirable pieces in this color.

Rounding out the pieces of Everglades in Violet are the 6" Sunflower vase, the 10½" Tulip vase and the 5" Leaves vase (see photo #2). You may possibly find other shapes in this pattern and color combination, as most Violet was produced in Everglades.

A limited amount of stemware in the Mt.

Vernon pattern was produced in Violet. The 10 oz. goblet and the 6½ oz. tall sherbet have been seen. Do you know of any other Mt. Vernon stems in Violet? The crimped bowl, covered candy dish and the Rose bowl are known in Violet in the Jenny Lind pattern. There seems to be less of the Jenny Lind pattern in Violet than of the previous two patterns mentioned. The Hambone ashtray previously noted is the last piece of Violet of which more than one is known.

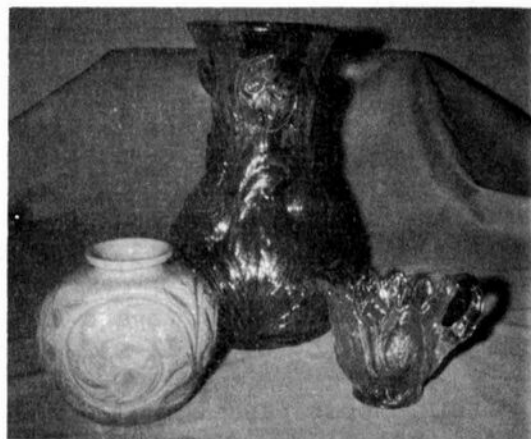
A large oval Caprice bowl and 4" Seashell ashtray are two unusual pieces of Violet which are the only ones known to exist so far. Please write us about any unusual pieces of Violet that you may have seen or are the lucky owner of, and we will note it in the CRYSTAL BALL.

An exact date for Violet has not been determined. As the Jenny Lind pattern is an extremely late pattern, production of this color was most likely in the late 40's or early 50's. It was definitely a short-lived color as its rarity proves.

Good Luck in finding your piece of Violet!



(photo #1)  
JENNY LIND



(photo #2)  
LEAVES VASE, TULIP VASE  
and LEAF CREAMER

Pieces of Violet may be seen in the following color reference books: Bennett's The Cambridge Glass Book, plate 7; Welker's Cambridge Ohio Glass in Color, Book I, plate 6; and Book II, plate 7. Most of the shapes mentioned can be found in the N.C.C. 1930-34 Catalog Reprint.

# Auction Notice

The 4th Annual All-Cambridge Glass Auction will be held August 6, 1977, in Columbus, Ohio, at the Howard Johnson's Motor Inn, 990 E. Granville Road (intersection of I-71 N. and S.R. 161). Begins at 11 AM.

Room reservations made through the Club will help defray the cost of the use of these facilities. Please make your reservations by writing Lynn Welker, P.O. Box 416, Cambridge, Ohio 43725 - or phone him at 614-826-4418. Please send your reservation in early and be sure to state the date you plan to arrive and how long you will be staying. Rates: \$18.50 single and \$21.00 double.

This large, modern facility is air conditioned and there is plenty of parking at the rear of the building. Please park in this area! We will have our own entrance. A sandwich lunch will be available in the Auction room.

We are now accepting consignments for this Auction. They must be in by June 25th, (Saturday). If you cannot have your glass to us by then, please send a detailed list of the items, with book or catalog references if possible. We ask that each member family limit their consignments to 25 items (a set or several of the same item will count as one item).

You may leave your consignments with the following members or at the Convention!

Bill Smith, 4003 Old Columbus Road,  
Springfield, Ohio 45502 - 513-323-3888

Janice Hughes, R.D.#5, Northgate Add.,  
Cambridge, Ohio 43725 - 614-432-7823

Jack Rettig, 5616 Hensel Woods Road  
Gahanna, Ohio 43230 - 614-855-1711

Lynn Welker, 2 E. Main Street  
New Concord, Ohio 43762 - 614-826-4418

George Hoffman, 129 S. 4th St.  
Newark, Ohio 43055 - 614-345-8550

We would prefer no damaged items unless they are major pieces. The Auction committee reserves the right to reject any items because of damage or duplication.

continued - - -

The fee for consignment will be 20% with all profit going to the Museum Fund.

Mail bids will be accepted again this year. You will receive a catalog of the Auction items with your July CRYSTAL BALL. Postage and insurance will be extra, but packing will be done free of charge.

We would appreciate volunteers to work at the Auction. Please contact us if you can work during the Auction. Please feel free to write or call if you have any questions concerning this Auction.

---

## MOTEL INFO

KNIGHTS INN --- Registration Headquarters!  
Rates: (1) \$13.50; (2) \$15.50; (3) \$19.50;  
(4) \$21.50 ----- Phone - 614-432-6391

HOLIDAY INN - Rates: (1) \$18.00 (2) \$25.00  
----- Phone - 614-432-7313

RAMADA INN - Rates: (1) \$16.00 (2) \$26.00  
----- Phone - 614-432-5691

TRAVELODGE - Rates: (1) \$15.00 (2) \$20.00  
----- Phone - 614-432-7375

SPIRIT OF 76 INNS -- (1) \$12.50 (2) \$16.00  
----- Phone - 614-439-3581

Exit at S.R.209 off I-70. Mailing address for all motels - Cambridge, Ohio 43725

SPRING VALLEY CAMPGROUND - S.R. 209 South,  
Cambridge, Ohio 43725 - Phone-614-439-1091  
Rates: Full hook-up \$4.25 for 2 - additional child 25¢, adult 50¢. Showers, rest-rooms, general store, swimming pool. Will take reservations.

---

# THANKS!

 for not complaining when your CRYSTAL BALL has been late in arriving these past three months!

We don't like to make excuses for ourselves but we do feel you are entitled to an explanation. Since we are no longer Xeroxing the CRYSTAL BALL it now takes a week to ten days at the printer. With a monthly deadline of the 15th, this only gives us 5 days to prepare the **copy**. This really is not enough time and consequently we have been running late.

Please bear with us -- we hope to improve!!

# NOMINEES FOR BOARD .....

Your Nominating Committee presents for your consideration, the following resume of each of the nominees seeking to be elected to your Board of Directors for the next four years. They are listed alphabetically for your convenience.

Please follow the instructions on the ballot(s) enclosed with this issue of the CRYSTAL BALL in casting your vote.

---

JOSEPHINE BARSTOW: Jo lives in Cambridge, Ohio. She is married, a home maker and mother of five grown children. A member of N.C.C. since March, 1976, she is a member of the Cambridge Squares Study Club. She has helped by working in the N.C.C. booth at our first Antique Show in 1976 and has also prepared



an Index Guide for the CRYSTAL BALL. She is presently involved with volunteer work at Guernsey Memorial Hospital. Jo's collection consists primarily of Nude stem items, flower frogs, and any item that is either carmen or blue. She has done much studying, but admits to making a mistake now and then. She has held leadership positions in numerous social clubs in the past, finding it more stimulating to be involved with the working end of any organization. She is an admitted Cambridge glass "addict" and as such she feels she has the time, energy and interest to help N.C.C. work toward its goals.

---

DORIS J. ISAACS: Doris lives in Cambridge, Ohio. She is married, a home maker, and mother of three grown children. She is also an Antiques dealer. She is an active volunteer at Guernsey Memorial Hospital and the Meals On Wheels service organization. She has belonged to N.C.C. since May, 1974 and is a member of the Cambridge Squares Study Club. She was appointed to

The Board of Directors in August, 1976, and is presently serving as Program and Entertainment chairman.



She helped in the N.C.C. booth at the Antique Show in 1976 and has contributed many news items and articles to the CRYSTAL BALL during the past year. She has a collection of over sixty pieces of dark emerald green Mt. Vernon pattern Cambridge glass, plus many other lovely pieces. Doris has a genuine desire to continue her contributions to N.C.C. as a member of the Board of Directors. She feels strongly that Cambridge glass is a part of the Cambridge community's heritage and that it should be preserved. She is willing and eager to help N.C.C. work toward that goal.

---

ARNOLD LYND: Arnold lives in Pataskala, Ohio. He is married, and is the father of four grown children. A third generation fruit grower, he is owner of Lynd Fruit Farm, Inc., Pataskala, Ohio. A member of N.C.C. since May, 1973, he has not felt he had the necessary time to devote to



the Club until recently. He is a collector of many different items, getting his start at the age of fourteen, when his father gave him 1400 Indian Head pennies as a birthday gift. Since that time his interests and collections have become many and varied. He has been a collector of Cambridge glass for the past ten years. He has a broad business background, plus leadership ability gathered while serving various civic, fraternal and trade organizations. Arnold has stated that he has given very serious consideration to accepting this nomination and intends to spend the necessary time and energy to fulfill this committment.

FOURTH ANNUAL CONVENTION  
**National Cambridge Collectors, Inc.**  
CAMBRIDGE, OHIO

June 24, 25, 26, 1977

SCHEDULE OF EVENTS

FRIDAY, June 24th

- 1:00 PM - 4:00 PM - REGISTRATION - Knights Inn Motel Lobby  
S. R. 209 (off I-70), Cambridge, Ohio
- 6:00 PM - 9:00 PM - CAMBRIDGE '77 ANTIQUE SHOW & SALE - PREVIEW  
Guernsey Catholic Central High School, S. R. 209 South
- 9:30 PM - - After Show "GET ACQUAINTED" Party - Cambridge Country Club  
S. R. 209 South (Free Hors D'Oeuvres and Pay Bar)

SATURDAY, June 25th

- 8:00 AM - 10:30 AM - REGISTRATION - Cambridge Country Club
- 8:30 AM - 10:30 AM - CONTINENTAL BREAKFAST - Cambridge Country Club  
Film - "The Crystal Lady"  
Guest Speaker - Barbara Shaeffer, Publisher and Editor  
"The Rainbow Review Glass Journal", Costa Mesa, California  
Topic - "The Process Of Etching Rosepoint"
- 11:00 AM - 6:00 PM - CAMBRIDGE '77 ANTIQUE SHOW & SALE  
- Visit Display Rooms at Show
- 1:00 PM - - TOUR - Mosser Glass Company  
Hosts: Charles Upton and Tom Mosser
- 2:00 PM - - TOUR - Degenhart Crystal Art Glass Company  
Hosts: Charles Upton and Elizabeth Degenhart
- 3:30 PM - - TOUR - Cambridge Glass & Pottery Museum  
Hosts: Charles Upton and Harold Bennett  
(Half price admission of 50¢ to be paid at door)
- 6:30 PM - 7:30 PM - COCKTAIL HOUR - Cambridge Country Club (Pay Bar)
- 7:30 PM - - N.C.C. ANNUAL CONVENTION BANQUET - Cambridge Country Club  
(Roast Prime Rib of Beef)  
Guest Speaker - Robert H. Coyle ASID, Newark, Ohio  
Topic - "Decorating With Antiques"

SUNDAY, June 26th

- 9:00 AM - - BUFFET BREAKFAST - Cambridge Country Club  
N.C.C. Annual Business Meeting  
"Show and Tell" after meeting
- 12 Noon - 6:00 PM - CAMBRIDGE '77 ANTIQUE SHOW & SALE
- 4:00 PM - 6:00 PM - Display Rooms Will Be Closed  
(Pick up Display glass during these hours.)

# NEARCUT Patterns

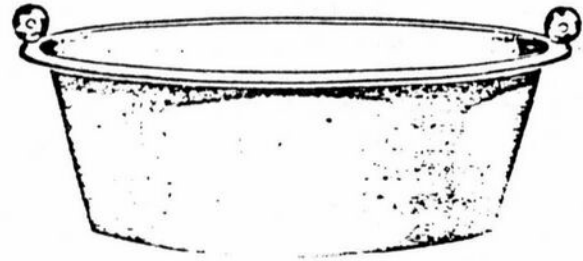
by Phyllis Smith

"NEARCUT" SPECIALTIES.  
For Table Decorations.

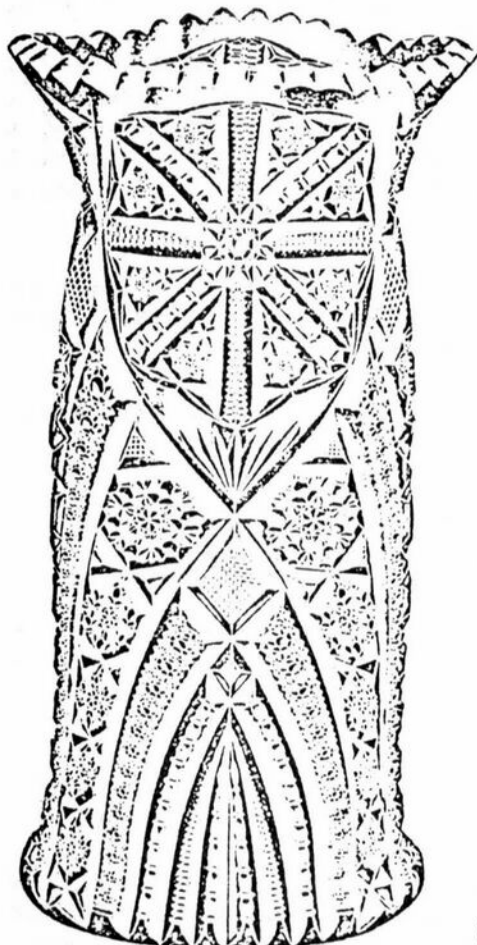
Our NearCut Specialties need very little explanation. These are just a few of the specialties we will be showing you during the next few months.

The #2640 Fern Dish looks very much like the Arch Foot Daisy pattern, but the number indicates that it was not a part of that line (the number for the Daisy pattern was 2760).

It is possible these items were marked. The #2640 Fern Dish has been seen but we cannot recall if it was marked or not. It seems that once again we must advise that study is the only real answer to learning to recognize these NearCut patterns.



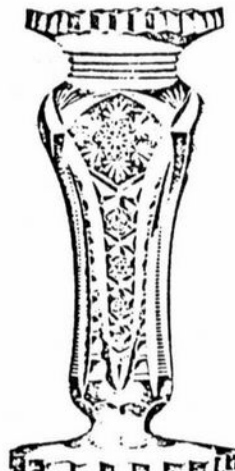
2640—Fern Dish & Metal Lining  
See Price List for Sizes



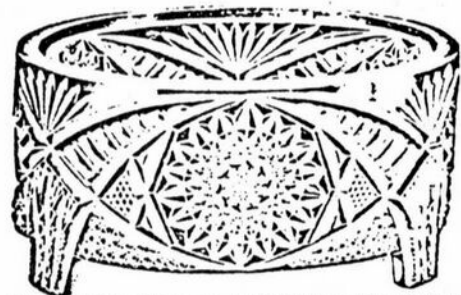
2671 12 inch Vase  
Extra Heavy and Fine Cut Design



No. 2642 Vase



No. 2643 Vase



No. 2689 Fern Dish and inside lining made of glass

## PRICE LIST.

	List Price Per Doz.	Original Pkg. Doz.
2740—Fern Dish and Heavy Nickel Plated Lining:—		
Small Size, diameter 6½ inches .....	12 00	4
Medium Size, diameter 7½ inches .....	15 50	2½
Large Size, diameter 8½ inches .....	20 00	1½

### METAL LINERS PACKED IN SEPARATE BOX

2689—Fern Dish and Glass Lining, diam., 6 in. ...	2 50	6
2643—6¼ inch Footed Vase .....	1 20	9
2642—6¼ inch Footed Vase .....	1 20	9
2671—12 inch Vase, diameter 6 inches .....	8 00	1½

We quote above prices for FULL PACKAGES ONLY. When LESS QUANTITY is ordered, ADD 10 PER CENT. to above prices.

We make only the highest grade pot glass.  
We make no tank glass.

All quotations made herein are for pot made and not tank.

# PRICES here & there

by N.C.C. Members  
and Phyllis Smith

Either everyone is still stuck at home, or you are all so busy running that you just have not had time to write! Whatever your reason -- PLEASE take a few minutes to jot down your finds and send them in to us.

We do have a few prices to report, so here they are. From Minnesota our reporter has found several good buys. The following items were found in an Antique Shop: two large Cambridge Arms vases for \$1 each; a #326 bon bon, etched Blossom Time and trimmed in gold (Welker I, p. 65) \$4; and a pair of tilt shakers in Farber holders in royal blue for \$3.50. At a Flea Market they found a crystal Mt. Vernon salt dip with original label and sterling silver spoon in original box for \$5.

From a Depression Glass Show came the following good buys: a #518 Figure flower holder in green for \$30; a small moonlight blue Caprice cigarette box for \$15; three signed #599 coasters, 5¼" in Carmen at \$2.75 each; and a pair of crystal #3500/74 Ram's Head candlesticks for \$8.

Still in Minnesota, our reporter attended an Antique Show and found a single crystal #1307 Candelabra at \$3.95; a #3500 crystal low footed compote etched Wildflower and trimmed in gold \$4; and last, but not least, a 7" crown tuscan Ashtray (some roughness on the edges) for only \$2.50.

From Alabama comes the report that Rosepoint cordials on the #3121 stem were being offered at \$22 to \$27.50 per stem. Seems that the interest in Rosepoint is continuing to grow and of course the prices are bound to keep pace. A good buy was a crown tuscan three compartment, Gad-roon relish for \$28.

At a Centerville, Ohio, Flea Market one of our reporters was lucky enough to find a Cascade relish for \$2. At another sale they purchased a Chantilly tray for \$25.

Another Ohio reporter sends us the news that they found a moonlight blue 4" flower frog for \$4 in an Antique Shop.

All for now -- let us hear from you!!

# STUDY Club News

continued from page 2

Barstow, Cambridge, Ohio. There were 14 members present.

The topic for discussion was Cambridge smoker items. Ashtrays, cigarette boxes, and cigarette holders were well represented on such stems as the #3011 Nude, the #1066 Aurora and the Twist that looks very much like the #1 muddler (see below).

Many types of ashtrays were present - from plain polished crystal to the beautiful Windsor Blue footed Seashell, not to mention Ebony with silver decoration. Several Dolphin footed cigarette boxes were shown, including a Windsor Blue and a Milk Glass hand decorated one. Quite different was a frosted cigarette box with a Ski scene decoration done in silver.



No. 1  
Muddler

On the "Show and Tell" table were such items as a Nude stem carmen table goblet, a crown tuscan Nude stem cocktail with gold krystol bowl, a tumbler etched Betty, a child's Near-Cut Wheat Sheaf punch bowl, a moonlight blue bowl etched Gloria, a Near-Cut Feather goblet, a Rock Crystal goblet engraved Wedding Band and a Caprice cordial.

Our next meeting will be held in the home of Charles and Marybelle Moorehead. Date to be announced later.

Submitted by Doris Isaacs

---

## HELP NEEDED

We need the help of every member if we are to make this our "Year of Growth". Please do your part and recruit one new member before the Convention.

The easiest way to do this is to recruit your "roommate". Why not do it today?

Send your name, address and membership # along with their name and \$3 (or 25¢ for each month remaining in your present membership year). We'll appreciate it, and so will they!



**10th ANNUAL**

---

**CAMBRIDGE, OHIO**

**Antique  
Show and Sale**

---

**MAY 7**

**10:00 A.M. - 9:00 P.M.**

**MAY 8**

**NOON - 6:00 P.M.**

---

**NATIONAL GUARD ARMORY**

**N. 10th ST. - McFARLAND DR.**

---

**35 QUALITY DEALERS**

---

**FOOD BY SILVER COURT OF THE  
AMARANTH**

---

**CHARLES UPTON - MANAGER**



**HEISEY COLLECTORS OF AMERICA, INC.**

Presents the Seventh Annual

**ANTIQUESHOW and SALE**

Newark High School Gym - Newark, Ohio

**HEISEY GLASS DISPLAY at YWCA**

JUNE 16, 17, 18, 19, 1977

Thursday, June 16, 1 p.m. - 9 p.m.

Friday, June 17, 1 p.m. - 6 p.m.

Saturday, June 18, 1 p.m. - 9 p.m.

Sunday, June 19, 1 p.m. - 6 p.m.

60 Quality dealers from coast to coast featuring HEISEY, selected antiques.

**AMPLE FREE PARKING**

**BENEFIT: THE NATIONAL HEISEY MUSEUM, NEWARK, OHIO**

Donation: \$1.75

.25c Discount With This Card

Show Manager: Charlie Wade, 165 Rugg Ave., Newark, OH 43055

Phone (614) 366-6636



1380. 26 oz.  
Square  
Etched Scotch

The Cambridge Glass Co.



1380. 26 oz.  
Square. Etched Rye



1380. 26 oz.  
Square  
Etched Gin

**Classified**

WANTED: CAMBRIDGE CLEO etched pieces in green. Interested in any and all pieces. Martha Cook, Box 205, Kewanna, Indiana 46939.

WANTED: CAMBRIDGE TALLY-HO, Royal Blue. Interested in buying most pieces of this pattern. Must be in excellent condition. NO chips, cracks or bad flaws. Send list and price to: Roger Hecker, 2294 Wallace Lake Road, West Bend, Wisconsin 53095.

**9th Annual Antiques Show and Sale**

Sponsored by

**Beta Sigma Phi Sorority of Reynoldsburg, Ohio**

Saturday, May 21, 1977 - 11 a.m. - 9 p.m.

Sunday, May 22, 1977 - 12 Noon - 6 p.m.

**Arts and Crafts Building—Ohio State Fairgrounds**

Exit 17th Ave. I-71 Columbus, Ohio

Show Chairman  
Mrs. Murray Youtz  
1519 Loxdale Drive

Reynoldsburg, Ohio 43068

Benefit: Pilot Dogs, Inc.

**SNACK BAR**

Donation \$1.25

Show Manager  
George Hoffman  
129 S. Fourth Street  
Newark, Ohio

**CAMBRIDGE '77**

2nd Annual  
National Cambridge Collectors

# ANTIQUA SHOW & SALE

**JUNE 24, 25, 26 - 1977**

Guernsey Catholic Central High School  
Rt. 109 South  
Cambridge, Ohio

HOURS:	
FRIDAY, JUNE 24th . . . . .	6:00 - 9:00
(PREVIEW ADMISSION \$3.50)	
SATURDAY, JUNE 25th . . . . .	11:00 - 6:00
SUNDAY, JUNE 26th . . . . .	12:00 - 6:00
(ADMISSION \$1.75)	

SPONSORED BY THE  
NATIONAL CAMBRIDGE COLLECTORS, INC.  
IN CONJUNCTION WITH THE FOURTH ANNUAL NCC CONVENTION

SELECT DEALERS  
OFFERING GENERAL ANTIQUES  
& CAMBRIDGE GLASS

Food — Door Prizes — Parking

# DEALERS



# DIRECTORY

<p>ANTIQUÉ ALLEY 24815 Broadway Bedford, Ohio 44146 216-232-7739 ---- Marie Spagnola CAMBRIDGE GLASS ROYAL DOULTON</p>	<p>BENICIA ANTIQUE SHOP 305 First Street Benicia, California 94510 OPEN 11 AM - 5 PM Closed Monday</p>	<p>BARBARA COOPER'S DEPRESSION SHOP 97 Weaver Street Montgomery, N. Y. 12549 CAMBRIDGE, HEISEY, DUNCAN MILLER and DEPRESSION ---- 914-457-3659</p>
<p>D &amp; D ANTIQUES 184 East Kossuth Street Columbus, Ohio 43206 DICK SLIFKO ----- 614-443-6020</p>	<p>Z. E. LOPES - 707-745-0978 VISIT HISTORIC BENICIA and its 28 shops Off Interstate #80 ----- ----- North of San Francisco</p>	<p>FINDER'S KEEPER'S ANTIQUES P.O. Box 303 P.O. Box 16023 Dayton, O. Columbus, O. 45401 43216 513-254-2937 614-965-1906 SPECIALIZING IN CAMBRIDGE GLASS!</p>
<p>D'MARIE'S ANTIQUES Rt. #1, c/o Eastern Antique Mart Thornburg, Virginia 22565 703-582-5755 ----- Jim Rankin OPEN DAILY - EXCEPT MONDAY</p>	<p>THE DARROW COLLECTION Highway A1A and Jungle Hut Road Flagler Beach, Florida 32036 Phone 904-445-3805 Mail Address: Rt. #1, Box 167 St. Augustine, Florida 32084</p>	<p>GEORGE HOFFMAN ANTIQUES 129 South 4th Street Newark, Ohio 43055 --- 614-345-8550 ---</p>
<p>MARY &amp; WILBUR HENDERSON 303 Guilford Avenue Woodsfield, Ohio 43793 SHOWS Only -- 614-472-1133 SPECIALIZING IN CAMBRIDGE GLASS!</p>	<p>HERITAGE ANTIQUES Rt. #5, Cambridge, Ohio - 43725 614-439-3241 TAKE N.8th St.Rd.(County Rd.#33) TURN LEFT AT RAILROAD TRACK.</p>	<p>'OUR GLASS ANTIQUES 20th CENTURY COLLECTIBLES featuring CAMBRIDGE GLASS Paul &amp; Ginny Henderson - Box 134 Iselin, NJ 08830 -- 201-283-3181</p>
<p>HOBBY HOUSE ANTIQUES Rt. #1, Cambridge, Ohio - 43725 614-432-6971 - Frank &amp; Lena TAKE RT.#209 W.FROM CAMBRIDGE TO RT. #658 - NORTH 1½ MILES.</p>	<p>YOU CAN ADVERTISE YOUR ANTIQUÉ SHOP HERE! 1 inch - \$6 for six months</p>	<p>MARGARET LANE ANTIQUES 2 E. Main Street New Concord, Ohio 43762 Lynn Welker ----- 614-826-4418 CAMBRIDGE GLASS MATCHING SERVICE</p>
<p>S &amp; J ANTIQUES 5616 Hensel Woods Road Gahanna, Ohio 43230 Sue &amp; Jack Rettig - 614-855-1711 CAMBRIDGE GLASS OUR SPECIALITY</p>	<p>A. SPRINGBORN P. O. Box E. G. #962 Melbourne, Florida - 32935 Shop #34, Webster, Florida OPEN EVERY MONDAY 305-254-7439</p>	<p>OLD TOLL GATE ANTIQUES Rt. #5, Box 7X Milan, Illinois 61264 SPECIALIZING IN HAVILAND CHINA</p>
<p>WOLFES GLASS EMPORIUM 330 Woodlawn Avenue Cambridge, Ohio 43725 John Wolfe ----- 614-432-2590 WED. &amp; FRI. 1-5PM or APPOINTMENT</p>	<p>National Cambridge Collectors, Inc. P. O. Box #416 Cambridge, Ohio 43725</p>	
<p>PRESIDENTIAL COIN &amp; ANTIQUE CO 6222 Little River Turnpike Alexandria, Virginia - 22312 Gail B. Levine ---- 703-354-5454 WANT LISTS SOLICITED-OPEN 6 DAYS</p>		
<p>WILMA SAXTON, INC. One E. Kings Highway Audubon, N.J. 08106 - 609-546-0559 Open 10AM-5:30PM - Closed Sunday CAMBRIDGE, HEISEY, ROYAL DOULTON</p>		
<p>HOFF - HAVEN ANTIQUES 21 Half Moon Lane Tarrytown, New York 10591 Shows-Mail-No Lists-914-631-2140 CAMBRIDGE, Rose In Snow Fostoria</p>		

**FIRST CLASS MAIL**