

# Cambridge



# Crystal Ball

ISSUE NO. 60

APRIL 1978

Published monthly by the NATIONAL CAMBRIDGE COLLECTORS, Inc.  
To encourage and to report the discovery of the elegant and boundless product  
of the Cambridge Glass Company, Cambridge, Ohio

Thoughts from the President - - - -

As we go to press this month, our thoughts are directed toward the activities that are underway in preparation for our annual festive weekend of Convention and Show.

The Show committee is indicating that most of the booth spaces have now been reserved and that they are coming up with what promises to be a very colorful and quality Show. Most of their support type arrangements have been made, such as locating the proper people to supply the food service, the tables are all reserved, and of course the school has now been reserved. All of which merely says that the show is well along the way.

Convention arrangements are also progressing at a good pace and we will try to have most of the details worked out for you by this time next month.

You will be receiving information pertaining to the display room (probably in this issue) and we earnestly solicit your best possible support. This is a big job that requires the co-operation of all of us.

We have been receiving some correspondence from various members in regard to some of the things that please them about the club

operation or the Crystal Ball content and also some of the things that displease, or fails to please them. We have in the past addressed this subject, but perhaps a little redundancy will be acceptable to you.

This is your Club, and it is your Crystal Ball. How the club is operated is directly dependent upon those people that you elect to the Board of Directors and upon how well you communicate your thoughts and desires to these people. Similarly the Crystal Ball is printed with your best interests in mind. If there are subjects or patterns that you specifically desire coverage on, we will try to accommodate you. A prerequisite is that you communicate these thoughts to us.

It is the basic aim of your Officers and of the Board of Directors to conduct the business of the club in a manner that will further the aims and reach the objectives of the Club as stated in our Constitution. It is also the aim of these people to conduct this business in the manner prescribed in our By Laws.

The election to hold our annual Shows were the results of meeting the above criteria and of supporting the desires of many of our members. Similarly, the decisions to proceed with the catalog reprints. These principles even apply to the subjects that are chosen for Quarterly Meeting programming and some of the Convention talks.

Content of the Crystal Ball is a different

MEMBERSHIP RENEWAL NOTICE

If the date on your address label is - - 4-78

This is your LAST ISSUE of the CRYSTAL BALL. Please renew NOW!!

Continued on page 2

# CAMBRIDGE CRYSTAL BALL

Official publication of National Cambridge Collectors, Inc., a non-profit corporation with tax exempt status. Published once a month for the benefit of its members. Membership is available for individual members at \$10 per year and additional members (12 years of age and residing in the same household) at \$3 ea. All members have voting rights, but only one CRYSTAL BALL will be mailed per household.

Back issues of the CRYSTAL BALL are available to members only, at a cost of 60¢ ea. or 12 issues for \$7.

## 1977-78 Officers & Committee Chairpersons

PRESIDENT ----- William C. Smith  
VICE-PRESIDENT ----- David B. Rankin  
SECRETARY ----- Janice Y. Hughes  
TREASURER ----- Doris J. Isaacs  
SERGEANT-AT-ARMS ----- David B. Rankin  
BUDGET & FINANCE ----- William C. Smith  
BY-LAWS ----- David B. Rankin  
CONVENTION ----- Board Members  
MEMBERSHIP ----- Josephine A. Barstow  
MUSEUM ----- Arnold Lynd  
PROGRAM & ENTERTAINMENT - Charles A. Upton  
PROJECT ----- David G. McFadden  
PUBLICITY ----- John F. Rettig  
STUDY GROUP ADVISORY ----- Janice Y. Hughes

1978 ANTIQUE SHOW ----- Gerald R. Landman

CRYSTAL BALL Editor ----- Phyllis D. Smith

## CLASSIFIED ADVERTISING RATES

5¢ per word \$1.00 minimum

We cannot mix type size in classified advertisements. Abbreviations and initials will count as words. Payment in full must accompany all ads.

## DISPLAY ADVERTISING RATES

	Members	Non-Members
1/8 page -----	\$ 4.00 - - -	\$ 6.00
1/4 page -----	7.00 - - -	10.00
1/2 page -----	12.00 - - -	18.00
3/4 page -----	17.00 - - -	25.00
Full page -----	22.00 - - -	33.00

## DEALERS DIRECTORY

1" ad ----- \$6.00 for 6 months

Cambridge CRYSTAL BALL assumes no responsibility for items advertised and will not be responsible for error in price, description or other information.

Advertising copy must be in our hands by the 15th of each month to assure publication in our next issue. Advertisements containing reproductions will not knowingly be accepted unless clearly stated.

PLEASE ADDRESS ALL CORRESPONDENCE TO

Cambridge CRYSTAL BALL  
National Cambridge Collectors, Inc.  
P. O. Box #416  
Cambridge, Ohio 43725

PLEASE NOTIFY US IMMEDIATELY OF ANY CHANGE  
IN YOUR ADDRESS!

Please enclose a self-addressed, stamped  
envelope when requesting information!!

THOUGHTS - con't from page 1

situation. The basic direction regarding this publication is to provide you with a monthly newsletter that will keep you informed with all of the information regarding club activities or events as well as serving as an instrument of instruction in the identification of Cambridge glass. As a means of generating a return for some of the production costs we also offer advertising space at a nominal fee.

As with all publications, it is a means of communication. What it communicates in any given month is dependent upon two requirements; What one or more persons wish to transmit and what any other person wishes to receive. For us to reap the maximum benefit from this situation we must satisfy the desires of the greatest number of receivers (readers). For us to increase the potential benefit from the publication or to hopefully reach the maximum benefit, we need very little. We need additional contributors, or writers, and we need more correspondence from you as to what you are wanting from the Crystal Ball.

Each time that we receive a request for information on a specific subject, we make every attempt to find the information and to present it in a usable form. We are, however, still void in many areas of Cambridge information. Your assistance would help to fill many of these holes and would be greatly appreciated. Please let us hear from you soon.

We have not heard of any new developments from the Museum Committee, so we are hoping that they will still be able to cause this to become "The Year of the Museum".

*Bice*

---

## In Memoriam

FRANK J. BARNES

Cambridge, Ohio

March 30, 1895 to February 4, 1978

National Cambridge Collectors, wish to express their sincere sympathy to his dear wife Lena, their daughter Mrs. Lois Huffman and other family members.

Frank was NCC Member #48 and was active in the Cambridge Squares Study Club. He will be greatly missed by all.

# Club News

National Cambridge Collectors, Inc.  
Quarterly Meeting  
February 25, 1978  
Bakers Restaurant, Norwich, Ohio

The meeting was called to order at 8 PM by President Smith. He welcomed all the members and guests in attendance and thanked Reba Embree for furnishing the flower frog decorated centerpiece.

In attendance were 11 Board members and 44 club members. The minutes of the November 12, 1977, meeting were read by Janice Hughes and approved. The Treasurer's report was given by Doris Isaacs showing the club has a balance of \$1,397.19 and the Museum Fund \$22,805.20.

## COMMITTEE REPORTS:

BY-LAWS: No report.

CONVENTION: President Smith announced the "Chairman" will be all 12 Board Members. The Convention will be June 23, 24 and 25, 1978, at the Cambridge Country Club with basically the same format as last year except for a possible increase in cost. Joy McFadden and Vicki Wollenhaupt will be in charge of the Display Room.

CRYSTAL BALL: Editor Phyllis Smith advised of the need for additional articles. She reported there will be an article from a member in the March CRYSTAL BALL on arranging flowers in "Flower Frogs". She expressed a desire for more Dealers Directory advertisers and advised most "dealers" report a good response to these ads.

MEMBERSHIP: Chairman Jo Barstow reported as of February 1, we have 424 \$10 members, 176 \$3 members, 5 Honorary members, for a total of 605. So far in February we have 27 new members.

PROJECT: Chairman Dave McFadden reported all the "Lady-Legs" bookends have been sold out and the club realized a profit of approximately \$4,300. The film, THE CRYSTAL LADY, and slides are now available for

rent at a cost of \$35 plus deposit. He reported he had been in contact with Ms. Lucile Kennedy at Imperial-Lenox Co., and the bookend for next year will be the Lion.

PUBLICITY: Chairman Jack Rettig asked for any new suggestions on advertising.

STUDY GROUP ADVISORY: No report.

MUSEUM: The Secretary reported Mrs. Faith Lasher donated \$12 (a partial payment she received for writing an article for a magazine), D. J. Price donated \$4.40, and Ed Ruby donated a Martha Washington juice glass with Grape etching.

## OLD BUSINESS:

None.

## NEW BUSINESS:

Our Nominating Committee Chairman, Charles Upton reported his committee consisting of Ed Ruby, Joanne Paul, and Chet and Naomi Gamble, met in the Upton home on February 2, 1978 at 3 PM. Nominees for election to the Board of Directors were: Margaret Cohagen, Bucyrus, Ohio; Harold Willey, Frazeyburg, Ohio; Frank Wollenhaupt, Dayton, Ohio; Bill Smith, Springfield, Ohio. Three are to be elected. Board members whose terms end in 1978 are: Bill Smith, Frank Wollenhaupt and Dave Rankin.

President Smith asked for nominations from the floor.

Doris Isaacs nominated David Rankin. He declined.

A motion was made by Richard Houston to close the nominations. Motion carried.

President Smith announced the Ballots will be mailed to members in the May, 1978 issue of the CRYSTAL BALL.

President Smith advised the 1949-53 Catalog Reprint is at the printers and will be available by the Convention.

Phyllis Smith reported she would be in

continued on page 14

# Quarterly Meeting Report

by Phyllis Smith

As is becoming the rule rather than the exception, our NCC Quarterly Meeting held Saturday evening, February 25th, was another success. A total of 57 members and guests gathered in the banquet room of Bakers Restaurant beginning at 6:15 PM for an enjoyable Social Hour, followed by yet another delicious Buffet dinner.

After dinner, President Smith presided over a relatively short, but informative business meeting. Items of interest to our members included the fact that our new Catalog Reprint is now at the printer and is promised for no later than the Convention (depending on energy shortages and Bindery back-up) or before if at all possible. The cost for this book has not yet been determined, but hopefully we will have the price and further information by this time next month. This 1949-53 Reprint will contain some 305 pages, plus a Price Guide.

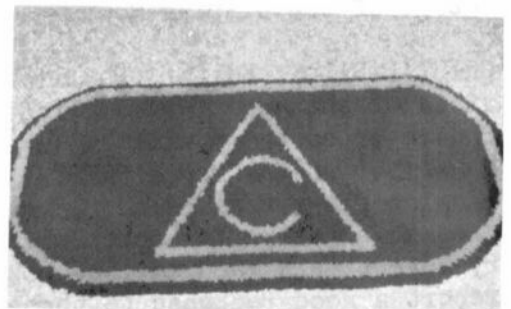
It was announced that the 16mm color, sound movie "The Crystal Lady" and a Kodak carousel tray containing 80 color slides, plus written narrative, of various pieces of Cambridge Glass, are now ready for rental purposes. If you belong to or know of an organization that would enjoy an informative program concerning Cambridge Glass, we recommend you contact our Secretary at the NCC address, and she will be happy to help you with reservation dates, price, etc.

For additional information concerning the business portion of the meeting, please refer to the Quarterly Meeting Minutes which begin on page 3 of this publication.

Before turning the program over to Frank Wollenhaupt, Program Chairman Charles Upton allowed us to "ooh" and "ahh" over his two "Cambridge" rugs, shown here. Seems his daughter hooked them for him and they are beauties. We all envied him his lovely black and gold rugs, and his talented daughter.



The program began with a presentation of colored slides narrated by Frank. Since the topic for the evening was Figural Flower Holders, naturally the slides were of these figures. There was a close up view of each figure, in each known size.



After the slide presentation there was a "Question and Answer" session and many interesting facts were presented. Once again, this was a program that is very hard to describe, but we will do our best for the benefit of those who could not attend.

CHARLIE'S RUGS

As you can tell by the photos on the following pages, there was a terrific display of figurals. There was at least one in every known shape and size and almost every known color. An updated Color Chart will appear in next month's CRYSTAL BALL.

According to Mr. Wollenhaupt, the Turtle flower holder was the very first figure holder produced by the Cambridge Glass Company, possibly as early as 1922. To our knowledge it was produced in crystal, ebony and crown tuscan only. An example of each color was present in the display. There are very few Turtles known to exist at this time and we were fortunate to be able to see all three colors on our display table.

The Geisha (one bun and two bun) was the next figural to be introduced. She was present in both forms and on a variety of bases. In the photo (top of next page), Frank



is holding in his right hand the correct glass base for the screw type Geisha. In his left hand is the metal ring which fits into the base and which in turn the Geisha screws into.

There were questions raised concerning the #1, #2 and 3 base types on the other figurals. It was explained that the #1 base is the oldest type. It is the high (approx. 2½" on the Rose Lady) base, with six holes for flowers. It can be found on the Rose Lady and the 13" Draped Lady. The #2 base is the shorter, perfectly smooth base, with ten holes, and has been found on all of the figurals with the exception of the Geisha, the Blue Jay and the 9" Heron.

The #3 base was the last type used and is very much like the #2 base except that it has the small ridges or scallopes on it. This base is found on the 8½" Draped Lady, the 6" Bashful Charlotte, the Seagull, the Blue Jay and the 9" Heron. The Oval base is the fourth type base to be found and it has been found on both the 8½" Draped Lady and the Two-Kid holders. (The 8½" Draped Lady and the Seagull have been reproduced by Imperial on the #3 base, in crystal ONLY!)

It was pointed out by Charles Upton that a series of 12 articles have been authored by our President Bill Smith and appear in back issues of the CRYSTAL BALL. Anyone interested in obtaining these issues may do so by ordering them from NCC at a cost of \$7 for all 12 or 60¢ per single copy. They are Issues #17 (Rose Lady and Base Types), #19 (Bashful Charlotte), #20 (Flower Blocks), #21 (Draped Lady), #22 (Self-Arranging Flower Blocks), #23 (Flower Circles and Bars), #33 (Flower Vase Insert), #34 (Eagle and "Bird?"), #35 (Turtle), #38 (Mandolin Lady), #40 (Geisha), and #41 (Heron).

The array of colors was beautiful to behold. It was felt that almost all of the known colors were present, but there were naturally a few exceptions. The Heron in milk glass was not present! At least one of these must have been produced in order to take the photo that appears in the catalog, but to the knowledge of all those present, no one has ever seen it. A rumor has been heard that an 8½" Draped Lady does exist in Rubina, but alas, this beauty has to date eluded being seen by any of us. It is almost a sure bet that others have also escaped us thus far, but will surely turn up one of these days. Perhaps when our Museum is ready they will come out of hiding.

A few of the items on display are still in doubt as to whether or not they were really made by the Cambridge Glass Company. It was felt that they probably are Cambridge, but until they can be proven by a picture in a catalog, they will remain as a question-mark.

One such questionable piece is the "Melon Boy", "Boy Child", or whatever name you prefer to call him. This is a rather large piece of glass, consisting of a definitely male child standing over what appears to be a melon or seashell. He is holding at shoulder height a half of a melon or some such object. He has been



continued on next page

seen in both pink and green colors, which appear to be Cambridge. It was stated in the 1933 Catalog there is a picture of a candleholder that resembles this boy, so it is entirely possible that he is Cambridge. But no positive statement can be made until more information has been found.

Along this same line of conjecture is the "Cockatoo" or "Bird" figural which has been found on the exact same type base and tree stump as the Eagle. The Eagle has been seen in an old Cambridge Catalog and has the Cambridge number 514. But, the "Bird" has not been seen, hence no definite statement can be made as to it's authenticity at this time.

During the "Question and Answer" session, a question was raised regarding the proper names for the #572 "Rose Lady", the #513 (8½") and #518 (13") "Draped Lady", and the #1114 (6") and #1115 (11") "Bashful Charlotte"? It appears that country-wide there seems to be confusion when trying to describe these ladies by mail or phone. It was decided by those present that the National Club should take a stand and endorse proper names for each of these figurals. The Company used only numbers for these figures.

On the last page of this issue of the CRYSTAL BALL, you will find your "Ballot" to be used in casting your vote for the names you prefer. Please be sure to take a few minutes of your time and mail this information to the NCC address, so that universal names may be established and the confusion hopefully brought to an end. (If you prefer not to tear up your CRYSTAL BALL - please use a plain sheet of paper to cast your vote.) Please don't delay - voting will end May 1, 1978.

Another interesting bit of information brought out during the discussion was the fact that once these figurals were given the frosted treatment, their color name changed. Amber became Cinnamon, light emerald green became Jade, light pink turned into Rose DuBarry, light blue was called Mystic and crystal was known as Crystol.

Following our question and answer session, the remainder of the program was turned over to Lynn Welker, who conducted our "Show and Tell". There were many items present, including some that were Cambridge and some that were not.

Some of the Cambridge items included: a most unusual crystal frosted syrup pitcher in the Decalware; a crystal Tally-Ho double shot glass (single on one end - double on the other end); a crystal Pristine ivy bowl with gold trim; both large and small size Star ashtrays; amber Everglades creamer and sugar; forest green frosted Everglades Leaf pattern ivy ball; and an amber Triangle shaped Cambridge sign. It was interesting to learn that these Triangle signs were given away to those who visited the old factory. These were never used as showcase signs, as many of us had always believed to be the case. According to Lynn, these were souvenir items only.

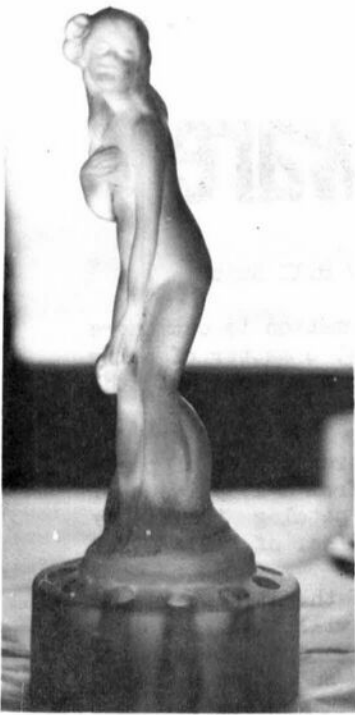
All in all, the evening was a most pleasant learning experience, coupled with good food and excellent companionship. We are always sorry that all of our members cannot share these meetings with us, but it is hoped that this article will convey in part, most of the information presented.

Oh yes, one final item of interest. When new, these Figure Flower Holders sold for the fantastic price of 75¢ to \$1.00 each!!



BLUE JAY

- - - - - I'll take a gross - how about you??



"BASHFUL CHARLOTTE"



"ROSE LADY"



"DRAPED LADY"



TWO-KID



MANDOLIN LADY

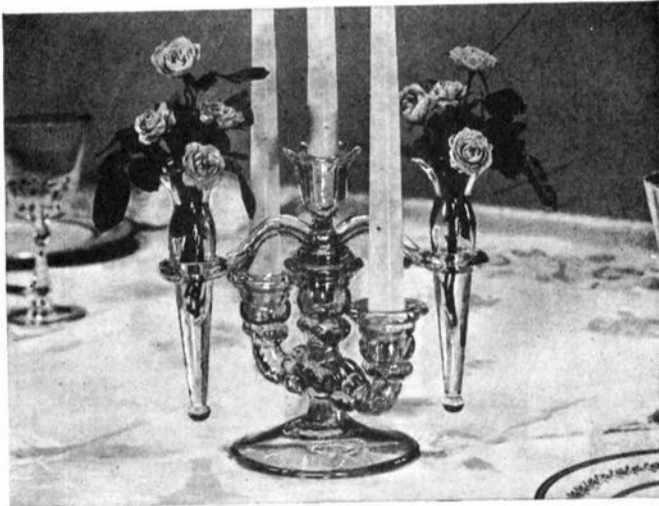




This ad presented courtesy  
of LuVerne Kiley  
Wisconsin

*how to set an  
ah-inspiring  
table with*

*Cambridge centerpieces*



With gem-like brilliance born of flawless crystal, Cambridge centerpieces enhance the beauty of the most charming setting. These stunning table decorations are offered in multiple candlesticks, candelabra with prisms, epergnes, hurricane lamps and "Cambridge Arms"—the interchangeable candlestick arms that lend themselves to so many unique and clever arrangements. At your favorite glassware department—priced reasonably. The Cambridge Glass Company, Cambridge, Ohio.

a. Hurricane Lamps . . . about \$8.00 a pair. b. Exquisite Cambridge Epergne with removable upper arm . . . about \$7.00. c. Sparkling Cambridge Candelabrum with prisms . . . about \$11.00. d. Candlestick with removable "Cambridge Arm" and peg bowls . . . about \$7.50. (Prices slightly higher Denver and West)

**Cambridge** 

*fine American hand-made crystal*  
THE AMERICAN HOME, MARCH, 1953

# farberware

by Bill Smith

Cambridge Glass information is out there to be found. It is just a matter of being lucky enough to stumble upon some of the less obvious hiding places.

The following pages are copies of pages that have been taken from a 1935 issue of a wholesale jewelers catalog issued by Aisenstein and Gordon, Inc. of Phila., Pa.

Having no knowledge of the Aisenstein and Gordon organization we will limit our discussion to the printed word as it appears on the catalog pages and to other background knowledge that has surfaced.

In the description of the various items or sets, there is no reference at all to the Farber Bros. Co. of New York, or to the Cambridge Glass Co. There are several items that mention the "Patented Metal Clip-On-Off Holders". This method of inserting glass into metal holders was patented by the Farber Bros. Co. and having established this point we will couple this information to the discussion that was presented by Mr. Eugene Henn at our 1975 Convention. In his talk Mr. Henn brought out the fact that Farber Bros. was one of the largest buyers of custom work from the Cambridge Glass Co. and that it was also one of the companies that did a very great deal toward keeping Cambridge working during the depression era.

Other companies also supplied custom fitted parts for Farber attachment, but where ever we can identify a particular shape as being from a Cambridge mold or when we can identify a color as Cambridge, we can accept fairly comfortably the opinion that the item was produced by Cambridge. In these following pages we can see that all of the items shown have a distinct similarity to other item components of Cambridge manufacture. The color references from this black and white printed page does not help us much, but some credence can be allowed in the fact that all of the colors mentioned are colors that were produced by Cambridge.



## CHROMIUM PLATED COCKTAIL SETS

FINE QUALITY.

ATTRACTIVE DESIGNS.  
PRICES PER SET

POPULAR PRICES

Jug- ??



No. C5468 COCKTAIL SET \$24.50

Consisting of Glass Shaker with Patented Metal Clip-On-Off Holder and New Type Pouring Constructed Top. Capacity 3 Pints. Six Glass Cocktail Goblets with Patented Metal Stemmed Holders. Height, 6 inches. Metal Tray, 19½ x 12 inches. Colors: Amber, Amethyst, Green and Blue.

The tumblers in each of these sets are bowls only from the #3126 Stemware line 3 oz. cocktails NCC 32-1.



No. C5470 COCKTAIL SET \$21.50

Consisting of Metal Shaker with Black Bakelite Handle. Capacity 3 Pints. Six Cocktail Glasses with Stemmed Patented Metal Holders. Height, 6 inches. Tray, 14 x 12 inches. Colors: Amethyst, Green, Blue and Amber.

Many of the items shown on these pages can be identified from our 1930-34 Catalog. In this identification some latitude is required in the stated volume of the containers. We cannot say whether this is the result of differences in the methods used to establish the volume, or whether it could have come from some additional capacity being created in the specifications provided to Cambridge by the Farber Co. The latter does not seem to be a potential answer in the case of the Ball decanter and the Tantalus flask.

The Ball decanters shown in items numbered C-5466 and C-5387, are most probably the #3400/92 shown on page 33-7 of the NCC 1930-34 Reprint, or C-5387 could be the complete set shown on page 33-24. Instead of listing each item of this nature, we have made notations on each of the sets as to their probable reference.

We were unable to directly associate the Bon Bon dishes and Compotes to any particular catalog reference. It is interesting to note that the Farber Co. did utilize the Cambridge Nude into their wares in a comparatively short time after this stem was introduced by Cambridge.

For additional comparison and review, we would remind you of the Farberware

Article by Gwen Shumpert, that appeared in the May, 1976 CRYSTAL BALL.

We would also remind you that the CRYSTAL BALL is always interested in any Cambridge related items that any of you may find and would be desirous of sharing with the other members of the Club. In such instances, please include with your correspondence the source (name of magazine, book or brochure), as well as any dates that would apply, such as the publication date, etc.

Any material submitted would be greatly appreciated by the CRYSTAL BALL staff and in most instances could be returned to you after publication, if so desired.



Jug-3400/92  
Tumblers #3126  
1 oz.  
Brandies.  
NCC 32-1

No. C5466 LIQUEUR DECANTER SET \$19.20

Decanter Capacity, 38 ounces. Eight Cordial Glasses. Capacity, 1¾ ounces. Height, 3¼ inches. Metal Tray, 14 x 12 inches.

All Prices Subject to Change Without Notice.

## BEVERAGE SETS

CHROMIUM PLATED WITH COLORED GLASS LININGS.

PRICES PER SET



Jug-3400/114 NCC 33-7  
Tumblers-3400/112 NCC 33-7

No. C5389

### BEER OR WATER SET

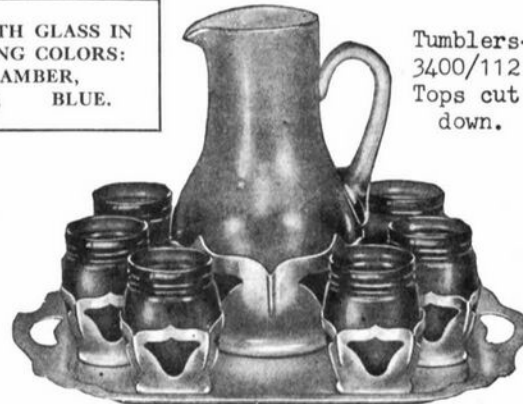
\$16.00

Consisting of Glass Jug and Six Tumblers with Patented Metal Clip-On-Off Holders on Tray. Jug 60 Ounce Capacity. Tumbler 9 Ounce Capacity. Tray 18½ x 11 inches.

Tumblers &  
Jug-3400/92  
NCC 33-24



SETS COME WITH GLASS IN  
THE FOLLOWING COLORS:  
GREEN, AMBER,  
AMETHYST, BLUE.



Tumblers-  
3400/112 w/  
Tops cut  
down.

No. C5387

### EIGHT PIECE DECANTER SET

\$12.30

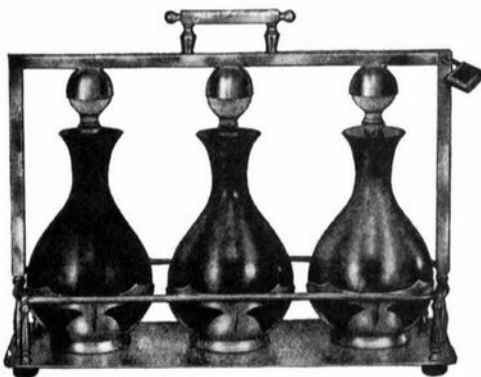
Consisting of a Tilted Jug and Six Glasses, all with Patented Metal Clip-On-Off Holders. Metal Tray with Cut-in Handles. Decanter Capacity, 38 ounces. Glass Capacity, 2 ounces. Metal Tray, 16½ x 9 inches.

No. C5442

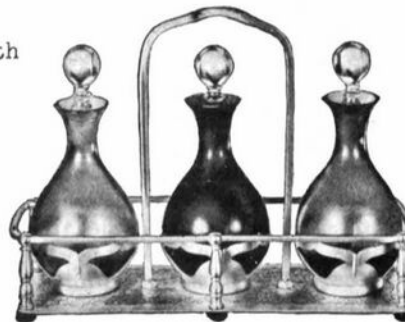
### CLARET OR PUNCH SET

\$12.80

Consisting of Glass Jug with Patented Metal Clip-On-Off Holders and Six Tumblers on Metal Tray. Jug 3 Pint Capacity. Height, 9 inches. Tumblers, 6 Ounce Capacity. Height, 3½ inches. Metal Tray, 14 x 12 inches.



Decanters in both  
sets - 3400/156  
NCC 34-13



No. C5555

### TANTALUS SET

\$14.50

With Locking Device. Beautifully Finished. The Owner of this Set may have no fear of his servants drinking up his whiskies—he has them under lock and key. Three Different Colored Glass Decanters. 18 Ounce Capacity Each. Patented Metal Holder of Clip-On-Off Type. Set Height Overall, 10¾ inches. Length, 13 inches. Width, 5 inches.

No. C5482

### TANTALUS SET

\$12.80

Very New and Popular Novelty Set consisting of Three Different Colored Glass Decanters. 18 Ounce Capacity Each. Patented Clip-On-Off Metal Holders. Metal Carrier or Holder. Height Overall, 9 inches. Width, 5 inches. Length, 13 inches.

All Prices Subject to Change Without Notice.

# CHROMIUM PLATED NOVELTIES

HIGH GRADE QUALITY.

EXCELLENT GIFT ITEMS.  
PRICES EACH

COLORS GLASS LININGS



3400 Line- S & P  
We have no catalog  
reference.

No. C5451 SALT AND PEPPER SET \$3.50  
Of Colored Glass on Center Handled  
Metal Tray, 6½ x 3¾ inches. Colors: Ame-  
thyst, Green, Blue, Peach, Amber and  
Crystal.



No. C5450 SALT AND PEPPER SET \$2.50  
Of Colored Glass in Fancy Gift Box.  
Colors: Amethyst, Green, Blue, Peach,  
Amber and Crystal.



#1402/52  
Tally Ho Ice Pail  
NCC 32-35

No. C5407 GLASS ICE PAIL \$6.40

With Patented Metal Clip-On-Off Holder  
and Metal Tong and Handle. Height, 10  
inches Overall, Diameter 5 inches.

Colors: Amber, Blue, Green and Ame-  
thyst.



No. C5441 GLASS ICE TUB \$5.90

With Patented Metal Clip-On-Off Holder,  
with Metal Tong and Side Handles. Height,  
4½ inches. Diameter, 9 inches. Colors:  
Amber, Blue, Green or Amethyst.



3400 Line  
No Catalog  
Reference

No. C5455 SUGAR AND CREAM SET \$6.40

Of Colored Glass on Center Handled Metal  
Tray, 10 x 5 inches. Colors: Amber, Blue,  
Green and Amethyst.

THE ABOVE ITEMS ARE WITH PATENTED  
CLIP-OFF-ON HOLDERS



#3400/1341  
NCC 33-7 for  
both sets.

No. C5428..... \$4.30  
CORDIAL SET WITH SIX GLASSES  
Capacity 2 ounces. Center Handled Metal  
Tray. Diameter, 8 inches. Height Overall,  
6½ inches. Colors: Amethyst, Green, Am-  
ber and Black.



No. C5426 CAKE AND WINE SET \$7.50

Six Cordial Glasses. Capacity, 2 ounces.  
Center Handle. Top Tray. Diameter, 8  
inches. Bottom Tray Diameter, 10½ inches.  
Height Overall, 10½ inches.

No. C5426. Chromium Plate.

No. C3727. Silver Plate.

Colors: Amethyst, Green, Amber and  
Black.

All Prices Subject to Change Without Notice.

# CANDY OR BON BON DISHES AND COMPOTES

CHROMIUM PLATED.

PATENTED CLIP - OFF - ON HOLDERS

COLORED GLASS INSETS

GLASS INSETS COME IN THE FOLLOWING COLORS: GREEN, AMBER, AMETHYST, BLUE

PRICES EACH



No. C5565 CANDY DISH COMPOTE \$3.20  
Diameter, 5½ inches.  
Base, 3½ inches.  
Height, 7½ inches.



No. C5560 BON BON \$1.90  
Diameter, 5½ inches.  
Height Overall, 5½ inches.



No. C5562 HIGH COMPOTE \$1.90  
Height, 5½ inches.  
Diameter, 5½ inches.



No. C5561 LOW COMPOTE \$1.90  
Diameter, 5½ inches.  
Height, 3½ inches.



No. C5566 CANDY DISH COMPOTE \$3.70  
Diameter, 5½ inches.  
Height, 7½ inches.



No. C5567 DOUBLE BON BON DISH \$3.70  
Height, 6 inches.  
Length Overall, 12 inches.



No. C5564.....\$2.50  
CANDY OR BUTTER DISH  
Diameter, 5½ inches.



No. C5563 HANDLED BASKET \$1.90  
Diameter, 5½ inches.  
Height Overall, 5½ inches.

All Prices Subject to Change Without Notice.

# we get letters

I would appreciate it very much if you could send me the 12 back copies of the CRYSTAL BALL that pertain to the Cambridge Figurals. Being rather new at collecting Cambridge I think these could be very useful to us, as are all of the CRYSTAL BALL issues. We can appreciate the hard work you do to make this a successful publication.

I also found something that was very interesting to me and may be of interest to some of the members. I was recently the recipient of a book written by Leloise Davis Skelley in 1937. The name of the book is "Modern Fine Glass".

Mrs. Skelley gives a brief account of the development of glass making from the earliest times, but devotes most of her attention to a description and evaluation of the work of contemporary craftsmen. One section of the book is about the very fine foreign glass made and the other is about the fine American glass made from the time of the Wistars and Stiegels up until the time the book was written.

I was both happy and surprised to find included with such names as Bryce, T. G. Hawkes, Libbey, Pairpoint, Steuben, Verlys of America, Fostoria, that other company from Newark and many others, the name Cambridge. I suppose I shouldn't have used the word surprised though, because anyone collecting Cambridge knows it belongs in with these names and others.

Mrs. Skelley says in part about Cambridge Glass: "Their production consists of pressed and blown glass of either lime or lead base. Etching, coloring, cutting, gold decoration, and enamelling comprise the bulk of their decorations."

"In their colors, Cambridge royal blue is derived from zaffer, forest green from chrome oxide, amber from sulphur, and selenium produces their beautiful peach-blo. Cambridge glass is perhaps most characterized by its unusual colors, intricate and lacy acid etchings, remarkable transparency even in the pressed wares,

and the precise and pleasing designs of their cut crystal."

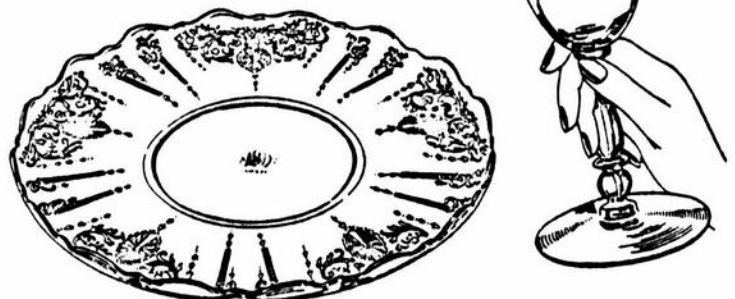
"In pressed ware, which is a considerable portion of their production, they heed aesthetic satisfaction by adapting utilitarian grace to the lines and shapes of the pieces. The Cambridge designers sense that duplication of a beautiful shape or design can escape banality, when the original is truly beautiful and the reproduction authentic."

Also in the book are two pictures of Cambridge Glass. One is of Krystolshell and includes a #110 seafood cocktail and a salad plate which she terms "An unusual design by Cambridge". The other is six pieces of #3400 Line dinnerware in an etching that I am not familiar with. I thought it was #732, but I just looked in the 1930-34 Catalog and it is quite different.

Willard P. Kolb, Ohio

EDITOR'S NOTE: After receiving your letter we went to our local Library and found a copy of the book to which you refer. It is a lovely book. The etching on the #3400 Line dinnerware is the beautiful "Candlelight". The February, 1975 issue of the CRYSTAL BALL contains a nice article by Ruth Forsythe on this Candlelight pattern. Thanks for sharing this information with us!

## CANDLELIGHT Etched Crystal by Cambridge



A pattern of shimmering lights aglow along lacelike tracteries distinguishes this lovely and tasteful American hand-made etched crystal.

A Cambridge original, its beauty will enhance your finest table. Come in now and see our complete, moderately priced selections of charming serving and accessory pieces for your home or for gifts!



# Club News

continued from page 3

charge of the table decorations at the Convention and asked if anyone had any bowls and candlesticks (blue in color and preferably royal) that could be used. If so, please notify her.

President Smith then turned the meeting over to Charles Upton, Program Chairman. He introduced Frank Wollenhaupt, who gave a slide presentation and then answered questions on Flower Frogs. Lynn Welker then had charge of the "Show and Tell".

A motion was made by Frank Wollenhaupt to adjourn at 9:50 PM.

Janice Hughes, Secretary

---

## STUDY Club News CAMBRIDGE SQUARES

submitted by Doris Isaacs

The Cambridge Squares met in the home of Roy and Doris Isaacs, on March 3, 1978 with 12 members present. As a make-up effort, two topics were on the agenda, with Marybelle and Charles Moorehead serving as co-hosts.

Marybelle was assisted by Charles Upton in the identification and discussion of decanters. Seventeen examples were shown.

Thirty-nine examples were shown in the discussion of Milk Glass items. Most were later pieces, although two pieces were the #130 Candy Plate and the Trefoil Plate as shown in the Bennett 1903 Reprint on pages 34 and 51.

"Show and Tell" items included a crystal Colonial toy candleholder, the last four goblets purchased by the Cambridge Squares for their on-going Museum Project, a royal blue wine on #3126 stem and a crown tuscan vase with Portia etching (no gold, reportedly an experimental piece).

Next meeting will be held March 31st, in the home of Charles and Mary Alice Upton.

## MEMBERSHIP REPORT

by Jo Barstow, Membership Chairman

Our Membership Drive is coming along fine, but your help is still needed if we are going to come close to the 100% increase we are hoping for! Won't you PLEASE do your part by recruiting at least one new member between now and Convention time?

During the last three months we have increased our membership by 135 new members. A great deal of thanks goes to the following members for their help.

Leading the list is Bill and Phyllis Smith who have recruited five new members (this makes a total of ten for them).

Right behind them with four new members each are George Hoffman (five total) and Arnold Lynd (six total).

Bringing in a total of two new members each are, Betty Archer, John Baker, Wilmer Bryan, Bob Cain (four total), Jean Carter, Virginia and Dick Houston, John Murrell, Marie Spagnola and John Woellert.

With one new member each to their credit, we are pleased to list, Mrs. Doug Allison, Joseph Andrejcak, Edmund O. Carl, June Bates, Walter Chatigny, Jack Conner, Chuck Eyen, Lynette Frederick, Chet and Noami Gamble, Helen Gilbert, the Paul Hendersons, Doris Isaacs (seven total), Nancy Johnson, Dorothy Krauss, the Jack Rettigs (three total), Frank Potts and Russ Vogel song.

Hope we haven't missed anyone -- and most of all, we hope to see your name listed here very soon! Thanks for your help!

---

## GWEN ACCEPTS !!

Great News! GWEN SHUMPERT, Feature Editor for "The Glass Review" has agreed to be Guest Speaker for our Convention Banquet. Her topic will be "Treasures In Glass".

More details later - make your plans now to attend - June 23, 24 and 25!

Complete Convention details will be in next month's CRYSTAL BALL.

**CAMBRIDGE '78**  
**3rd ANNUAL**  
**National Cambridge Collectors**

**ANTIQUES**  
**show & sale**

**JUNE 23, 24 & 25**

GUERSEY CATHOLIC CENTRAL HIGH SCHOOL  
 St Rte 209S CAMBRIDGE OHIO



Chmn. G R LANDMAN POBOX 416 CAMBRIDGE OH 43725

**American Glass Animals**  
**A to Z"**

by Evelyn Zemel  
 Edited by Ada Wilson



**\$18.00**  
**Post Paid**

- ★ 300 Pages
  - ★ .25 Company Chapters
  - ★ 285 Photos & drawings
  - ★ Articles by Leading Glass Authorities
  - ★ Large Photos
- With easy to read text

IT'S READY  
 FOR MARCH DELIVERY

ALL THE ANIMALS FOR  
 THE FIRST TIME  
 UNDER ONE COVER!!

★★★★★★★★★★

**\$18.00 Post Paid**

Please send check or  
 money order to:  
 A. TO Z Productions  
 230 NW 126th St.  
 North Miami, Fl 33168



**Classified**

FOR SALE: CAMBRIDGE URN LAMP. Crown  
 tuscan, Rosepoint pattern. Signed "Cam-  
 bridge" and "Rosepoint". Guaranteed  
 Museum quality. Photo available. \$300.  
 Louise Dolman, 5521 Sagitarius Way, Cit-  
 rus Hts., Calif. 95610 --- 916-961-7448.

"A teacher was explaining to her third  
 graders the importance of penmanship.  
 'If you can't write your name, when you  
 grow up you'll have to pay cash for  
 everything.'."

"If you think of giving, but never do;  
 if you think of helping, but never come  
 through; if you think of being encourag-  
 ing, but grumble, instead; my friend,  
 think not of dying -- you're already  
 dead."

John M. Cline

# DISPLAY ROOM

Dear Fellow Club Members,

The 1978 Display Room Committee wishes to invite your participation in this year's display.

This year we would like to present the many versatile colors that the Cambridge Glass Company produced. We would also like to display as many dinnerware patterns as possible.

Enclosed with this issue of the CRYSTAL BALL is a list of the various colors. If you would take a few moments and list the pieces you have in the various colors, that you would be willing to have displayed in our Display Room, it would be appreciated. We would prefer to limit dinnerware place settings to: plate, cup, saucer and one piece of stemware.

We would especially like to use display pieces that have never appeared in the Display Room on previous occasions.

Last year our "get involved" project was the "mini-display" room. This year we will have a new project. This will be announced in the May issue of the CRYSTAL BALL.

We sincerely hope that all Club members attending the Convention enjoy the Display Room and in order to do this, we need your help.

YOUR 1978 DISPLAY ROOM  
COMMITTEE

Vicki Wollenhaupt, Joy McFadden  
Charles Upton, Larry Hughes

See You At The Convention  
And Antique Show!

June 23, 24, 25, 1978

# CAST YOUR BALLOT

Please indicate your preference for the common name you feel would be most appropriate for NCC to endorse for the three figural flower holders shown below. Return before May 1st, to: NCC, P. O. Box 416, Cambridge, Ohio 43725.



#513 & #518

Draped Lady

Bashful Charlotte

Other \_\_\_\_\_



#1114 & #1115

Bashful Charlotte

September Morn

Other \_\_\_\_\_



#572

Rose Lady

Flower Lady

Other \_\_\_\_\_

NATIONAL CAMBRIDGE COLLECTORS, INC.  
P. O. Box #416  
Cambridge, Ohio 43725

FIRST CLASS MAIL