

Cambridge



Crystal Ball

ISSUE NO. 97

MAY 1981

Published monthly by the NATIONAL CAMBRIDGE COLLECTORS, Inc.
To encourage and to report the discovery of the elegant and boundless product
of the Cambridge Glass Company, Cambridge, Ohio

Thoughts from the President.....

This month I would like to pay tribute to all of the thousands of persons who are members of Glass Collecting Clubs, the Clubs themselves, and to the many members who spend countless hours making these Clubs a success.

I do not know how many glass collectors clubs there are in the United States, but I do know that their goals are the same, or at the very least, quite similar. Generally speaking their purpose is to study and preserve the products of the many different factories who produced glass in the past, and those that are still producing today, so that future generations may not only enjoy these beautiful glasses, but will know something of their history. They are, in fact, helping to preserve the products and history of the oldest industry in the United States, and probably the oldest industry in North America. A glass house was set up in Jamestown in 1608 for the manufacturing of glass, 168 years before we became the United States.

To some it is just a very enjoyable hobby, to some it may be a hobby with a certain degree of livelihood involved, to some it is possibly their whole livelihood, while others may belong to collectors clubs because of the camaraderie that exists among these people. There are probably dozens of other reasons for people belonging, and whatever their reasons they are, knowingly or not, appreciated. They are also providing a service to mankind both in the present and in the future.

Many persons belong to more than one Glass Collectors Club and it is probably difficult to support each equally, but do lend your support in any way you can. One of the best ways to lend your support is to attend the club meetings and especially the annual Conventions. I do not know how many of the clubs hold annual conven-

tions, but in this area there are several beginning in June and stretching into the Fall. A few that come to mind locally are: Heisey; Cambridge; Imperial; Fostoria; and Fenton. Whatever club you belong to, try to attend one of their Conventions. You'll find it a very rewarding experience. I'm sure that the Convention committee of all the clubs feel as we do in the Cambridge Club. The greatest reward for the efforts they put forth, is to see as many people as possible attend and enjoy themselves.

Our own Convention and Show is coming up in about seven weeks (June 26, 27, 28) at the Shenandoah Inn. Your registration forms were in the last issue of the *Crystal Ball*. Again you are urged to send them in as soon as possible. Please don't wait until the last minute and then be discouraged because there aren't any reservations left for the Banquet, which features Dr. & Mrs. John Adams as our main speakers. Reservations are limited due to the seating arrangement. The Saturday morning breakfast, with Andy Anderson as speaker will also be somewhat limited. The Get Acquainted Party, the Sunday morning breakfast and the Annual Meeting are a little more fluid. Of course the Show, the Display Room and the Research Room are on-going for the three days.

The tours to the glass factories in Cambridge should be very interesting to those of you who can make it on Friday. The tours are during the hours that the factories are producing, and for those of you who have never seen glass made, this should be an interesting and educational experience. Also while attending the Convention you will be in the heart of GLASS COUNTRY and may want to take a few days before or after the Convention to visit some of the other glass factories such as Imperial, Fostoria, Viking, Wright, Westmoreland, Smith or Fenton to name a few.

If you are planning to stay at the Shenandoah Inn, better call and make reservations soon. Rooms are going fast.

Again, as always, we will need volunteer help during convention. This is your opportunity to contribute to the club effort by involvement.

THINK CONVENTION!

Wellard

MEMBERSHIP RENEWAL NOTICE

If the date on your
address label is - -

5 - 81

This is your LAST ISSUE of the CRYSTAL BALL.

Please renew NOW!

CAMBRIDGE CRYSTAL BALL

Official publication of National Cambridge Collectors, Inc., a non-profit corporation with tax exempt status. Published once a month for the benefit of its members.

Membership is available for individual members at \$10 per year and additional members (12 years of age and residing in the same household) at \$3 each. All members have voting rights, but only one *Crystal Ball* will be mailed per household.

Back issues of the *Crystal Ball* are available (beginning with Issue #1, May 1973) for members only. Cost: 60¢ each or 12 issues for \$7.

1980-81 OFFICERS & COMMITTEE CHAIRPERSONS

PRESIDENT	Willard Kolb
VICE-PRESIDENT	Josephine Barstow
SECRETARY	Janice Hughes
TREASURER	William Smith
SERGEANT-AT-ARMS	Don Armbrecht
ASSISTANT SECRETARY	Susan Rankin
BOOK SALES	Meg Turner
BUDGET & FINANCE	David Rankin
BY-LAWS	David Rankin
CONVENTION	Josephine Barstow
MEMBERSHIP	Josephine Barstow
MEMBERSHIP ASSISTANT	Brenda Harbaugh
MUSEUM	Billy Harbaugh
MUSEUM CURATOR	Charles Upton
PROGRAM & ENTERTAINMENT	Frank Wollenhaupt
PROJECT	Willard Kolb
PUBLIC RELATIONS	William Smith
PUBLICITY	Joseph Andrejcek
STUDY GROUP ADVISORY	Jack Rettig
1981 ALL-CAMBRIDGE AUCTION	Lynn Welker
1981 ANTIQUE SHOW	Charles Upton
CRYSTAL BALL EDITOR	Phyllis Smith

CLASSIFIED ADVERTISING RATES

5¢ per word \$1.00 minimum
 We cannot mix type size in classified advertisements. Abbreviations and initials will count as words. Payment in full MUST accompany all ads.

DISPLAY ADVERTISING RATES

	Members	Non-Members
1/8 page	\$ 4.00	\$ 6.00
1/4 page	7.00	10.00
1/2 page	12.00	18.00
3/4 page	17.00	25.00
Full page	22.00	33.00

DEALERS DIRECTORY

1" ad (5 line maximum) \$6.00 for 6 months
 Cambridge *Crystal Ball* assumes no responsibility for items advertised and will not be responsible for error in price, description or other information.

Advertising copy must be in our hands by the 10th of each month to assure publication in our next issue. Advertisements containing reproductions will not knowingly be accepted unless clearly stated.

PLEASE ADDRESS ALL CORRESPONDENCE TO

Cambridge Crystal Ball
 National Cambridge Collectors, Inc.
 P.O. Box 416
 Cambridge, Ohio 43725

PLEASE NOTIFY US IMMEDIATELY OF ANY CHANGE IN YOUR ADDRESS!

Please enclose a self-addressed, stamped envelope when requesting information!!

STUDY Club News

STUDY GROUP #6 - SOUTHERN CALIFORNIA "CALIFORNIA CAMBRIDGE COLLECTORS"

The California Cambridge Collectors Study Group met March 27th, in the home of Herb and Betty Wanser. There were sixteen members and two guests present.

A delicious potluck dinner was followed by an interesting program on Farber items. Many good examples were displayed, including: a locking Liquor set with three decanters in dark green, royal blue and yellow; a larger (38 oz.) Liquor set; a Nude stem with Diane etching on the insert; a ball shape Decanter; a Condiment set in assorted colors on a Farber tray; a Honey dish; Candleholders; a Lazy Susan; Cambridge Arms with Farber base; a Jelly dish with spoon; an amethyst Decanter; a Relish dish; a Swan; a covered Sugar; and a carrara glass insert with a gold Farber lid.

Our "Show & Tell" consisted of the following items: a pink Rose Lady flower holder; a pair of Martha candleholders with prisms and Rosepoint etching; a 3" dark green Swan; a peachblo moonstone Candy dish with cover; a large Caprice Rose bowl in moonlight blue, a windsor blue Shell shaped bowl; and a milk glass Candleholder with gold trim.

submitted by Joan McDowell, Secretary

STUDY GROUP #7 - EASTERN OHIO "THE CAMBRIDGE BUFFS"

The Cambridge Buffs Study Group met March 11th, in the home of Tom and Deanne Gray. There were eleven members present.

Fifty-five pieces of glass were displayed and identified, and only four were not Cambridge. Much interest was evident in the showing of several outstanding pieces, including: a heatherbloom Sherbet etched #731; a pomona green Creamer & Sugar; a crystal Cornucopia centerpiece with two candleholders; an ivory Place Card; a milk glass Jug; an emerald green Juice with gold encrusted Hunt Scene etching; a frosted Sherry Decanter with decal decoration of a dancing girl with bubbles; a marked crown tuscan Nude stem Cigarette Box with red enamel trim on lid; an azurite Plate; and a royal blue Rooster Muddler.

A letter from NCC President Willard Kolb was read. He thanked the Study Group for having him as a guest at the January meeting and stated that he was impressed with the interest and professionalism of the Group. The Group decided to furnish pens as favors at the Convention in June. Possible sales items were discussed.

submitted by Lena Barnes

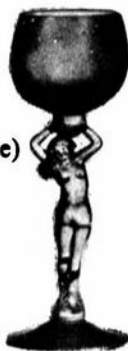
continued on page 13

3011 FIGURE STEM LINE

by Janice Hughes
& Lynn Walker

ROEMER (3011/8)

The nude is 4-3/4" (middle size nude)
The top width of bowl is 2-1/8"
The length of bowl is 2-1/4"
The overall height is 7-1/2"
It holds 5 oz.



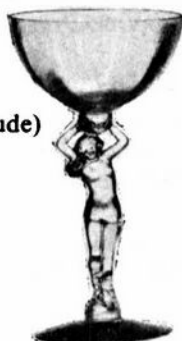
HOCK (3011/5)

The nude is 4-3/4" (middle size nude)
The top width of bowl is 2-3/4"
The length of bowl is 2-1/4"
The overall height is 7-3/4"
It holds 6 oz.



SAUCER CHAMPAGNE (3011/3)

The nude is 4-3/4" (middle size nude)
The top width of bowl is 4"
The length of bowl is 2-1/4"
The overall height is 7-3/8"
It holds 6 oz.



All of these are pictured in the NCC 1930-34 Catalog Reprint on page 34-2.

The Hock and Roemer were produced in royal blue, forest green, amber, and amethyst. There is a possibility they were made in crystal, gold krystal and carmen, but we do not know of any. The Roemer cups in much more at the top than the Hock. These were dropped from the line in the middle 40's. Both are very hard to find. Neither have been seen decorated.

The Saucer Champagne has been seen in amber, amethyst, forest green, gold krystal, heatherbloom, carmen, royal blue, crystal, moonlight blue, pistachio, smoke, Cambridge pink, mandarin gold and emerald green. It has been seen with various cuttings; Gloria, Apple Blossom and Rose Point etchings; and, Rockwell Sterling trim. It was also available in crackle finish in smoke, mandarin gold, carmen and moonlight blue. The crackle finish was made late in Cambridge production and is considered extremely rare.

Some of these can be found with frosted stems.

None of these shapes have been re-produced.

(Next month, Smokers)

EIGHTH ANNUAL CONVENTION

National Cambridge Collectors, Inc.

June 26, 27, 28, 1981

CONVENTION ACTIVITIES

will be held in the

SHENANDOAH INN

P.O. Box 147, Old Washington, Ohio 43768
(Interstate 70 - Exit 186 - 7 Miles East of Cambridge, Ohio)
Phone - 614/489-5511

SCHEDULE OF EVENTS

FRIDAY, June 26th

- 1:00 PM - 4:00 PM REGISTRATION - Room 101
(ALL Convention Participants
--MUST BE REGISTERED!)
- 1:15 PM - GLASS FACTORY TOURS
--Meet at Shenandoah Inn
(Mosser & Boyd's Crystal Art Glass)
- 6:00 PM - 9:00 PM ANTIQUE SHOW & SALE
PREVIEW - Main Ballroom
DISPLAY ROOM OPEN -
Room 100
- 9:30 PM - GET ACQUAINTED PARTY
Banquet Room - Pay Bar
Mini-Auction

SATURDAY, June 27th

- 6:00 AM - 5:00 PM FLEA MARKET
Guernsey County Fair Grounds
- 8:00 AM - 10:30 AM REGISTRATION - Banquet Room
- 8:30 AM - 10:30 AM CONTINENTAL BREAKFAST
Banquet Room
Speaker - A. W. "Andy" Anderson
Topic - "Cambridge Arms Magic"
- 11:00 AM - 6:00 PM ANTIQUE SHOW & SALE
Main Ballroom
DISPLAY ROOM OPEN
Room 100
- 6:30 PM - 7:30 PM COCKTAIL HOUR - Pay Bar
Banquet Room
- 7:30 PM - ANNUAL CONVENTION
BANQUET - Banquet Room
Speakers - Dr. & Mrs. Jack (Mary)
Adams
Topic - "Cambridge Carnival Glass"

SUNDAY, June 28th

- 9:00 AM - BUFFET BREAKFAST
Banquet Room
Annual Business Meeting
"Show & Tell" (after meeting)
- 12 Noon - 6:00 PM ANTIQUE SHOW & SALE
Main Ballroom
- 12 Noon - 4:00 PM DISPLAY ROOM OPEN -
Room 100
- 4:00 PM - 6:00 PM DISPLAY ROOM WILL BE
CLOSED
(Please pick up Display Glass)

NOMINEES FOR BOARD

Your 1981 Nominating Committee presents for your consideration, the following resume for each Nominee seeking to be elected to your Board of Directors. The three (3) elected will serve on this Board for the next four years, until 1985. They are listed here alphabetically. Please follow the instructions on the Ballot(s) attached to this issue of your Cambridge *Crystal Ball* (May 1981), in casting your vote.



JOSEPHINE A. BARSTOW: Jo joined NCC in March, 1976 and holds card #570. She was elected to the Board of Directors in June 1977. She is a member of Study Group #2 "The Cambridge Squares". She has served on Convention committees, as Convention Registration chairman, on the Auction committee four years, and as Membership chairman four years. She is currently 1981 Convention chairman and NCC Vice-President.

Jo was born in 1929 in Akron, Ohio and is a graduate of Kenmore High School. She and her husband Gerald are the parents of five grown children, four girls and one boy, and five grandchildren with another one on the way. Jo is employed as a Realtor by BJB Realty Inc., Cambridge, Ohio.

Her hobbies include craft projects, golf, bowling, hospital volunteer work, and collecting Cambridge glass. She has held several offices for both her bowling and golf leagues.



MARGARET J. GOTSCHALL: Peg joined NCC in July, 1979 and holds card #1491. She is a member of Study Group #7 "The Cambridge Buffs".

Peg was born in 1928 in Dover, Ohio and is a graduate of Muskingum College with a B.S. in Music Education. She and her husband Dale make their home in Cambridge, Ohio, and are the parents of four sons. Peg is a homemaker who has been previously employed as a public school Music and English teacher, private Piano instructor, Church Choir Director, and Executive Director of the Campfire Council 77-70. Her hobbies include collecting antiques and collectibles, music, decorative painting, and needlework.

She has donated many volunteer hours of service to the various organizations to which she belongs. She has served as chairman of the following organizations: Craft Classes of the Salt Fork Arts and Crafts Festival; Wing 2; and the Ohio Hospital Association Show and Share. She has also served the Hospital Gift and Snack Shops; the American Red Cross; the Board of the Campfire Council; and the Cambridge Concert Association. Peg is a member of Ohio Arts and Crafts Foundation, Rotary Anns, and the Westminster United Presbyterian Church. She has served her church as a Sunday School teacher, Choir member, and member of the Women's Association and Circle.



BILLY F. HARBAUGH: Billy joined NCC in October, 1979 and holds card #1557. He has served on the Auction committee, and the Museum committee, and is currently Museum chairman.

Billy was born in 1925 in New Straitsville, Ohio and is a graduate of Meredith Business College, Zanesville, Ohio, with a degree in Business Accounting. He is the owner of BJB Realty Inc., Broker and Insurance Agency. Prior to his involvement in the realty business he was owner of Cambridge Redi-Mix Inc. He also served as a Pharmacist Mate in the U.S. Navy. He and his wife Barbara make their home in Senecaville, Ohio, and are the parents of four grown children, three girls and one boy.

His hobbies include collecting Cambridge glass and farming. He is a member of the Masonic Lodge, Scottish Rite, Kambri Shrine, Elks, and the Cambridge Chamber of Commerce. He is a Past Master of his Masonic Lodge, a Past Exalted Ruler of the Elks Lodge, and has served as Director of the Chamber of Commerce. He is also an active member of the Second Presbyterian Church, Cambridge, Ohio.



WILLARD P. KOLB: Willard joined NCC in May, 1977 and holds card #779. He was appointed to the Board of Directors in January, 1979. He has served as chairman of the Display Room, Project committee for two years, and as a member of the Museum committee. He is currently Project chairman and NCC President.

Willard was born in 1933 in St. Clairsville, Ohio and is a graduate of St. Clairsville High School. He served in the Army for two years, spending most of that time in Germany. He and his wife Norma are the parents of three children, two girls and one boy. He is currently employed as Manager of the Retread Plant and Tire Dealership of Clifford Motors Corp., St. Clairsville, Ohio, and has worked there for the past 28 years.

He has several hobbies which include: reading, especially books containing History or information concerning WWII; furniture refinishing; collecting Cambridge glass; and visiting and studying museums. This interest in museums is the force behind his drive toward the establishment of the NCC Museum.



JOY R. McFADDEN: Joy joined NCC in May, 1973 and holds card #26. She has served on the Display Room committee for three years, the Nominating committee, the Auction committee every year, and has contributed articles to the *Crystal Ball*.

Joy was born in 1941 in Marysville, Ohio and is a graduate of Grant Hospital School of Nursing, Columbus, Ohio. She is currently employed as a Registered Nurse by a private Psychiatric Hospital, and is a partner in an antique business.

Joy enjoys such hobbies as quilting, collecting Cambridge glass, and raising West Highland White Terriers. She is a member of the Grant Hospital Alumnae Association, Heisey Collectors of America, and the Mid-Ohio Glass Collectors Club.

CAMBRIDGE GLASS FEATURED BY SEARS!

by Phyllis Smith

Can you believe it, Sears-Roebuck and Company was selling Cambridge glass in 1927? Wouldn't it be nice to phone in an order for a few pieces at the prices shown here? I'd certainly like to have a pair of the-----whoops! I don't want to tell you that right now, maybe later!

Fine Quality Cut and Etched Crystal Clear Glass Tableware



7-Piece Star Cut Water Set
Two-quart 8 1/2-inch tankard shape pitcher and six 1/2-pint tumblers. Thin blown crystal glass, highly polished. Cut with three 6-pointed sunburst stars with rays. Weight, packed, 6 pounds.
38K1408-Per set.....\$1.80



Star Cut Stemware
Thin blown crystal glass, highly polished, with one-piece drawn stems. Each piece is cut with three 6-pointed polished stars with cut silver gray rays. Popular Fifth Avenue shape.
38K1409-Water Goblet. Height, 6 1/2 inches. Weight, packed, 4 1/2 lbs. Per set of six.....\$1.88
38K1410-Tall Footed Sherbet. Height, 4 1/2 inches. Weight, packed, 4 1/2 lbs. Per set of six.....\$1.80
38K1411-Low Footed Sherbet. Height, 3 1/2 inches. Weight, packed, 4 lbs. Per set of six.....\$1.75
38K1412-Standard Table Tumbler. Height, 3 1/2 inches. Weight, packed, 3 1/2 lbs. Per set of six.....\$1.60
38K1413-Tall Lemonade or Ice Tea Tumbler. Height, 5 1/2 inches. Weight, packed, 4 1/2 lbs. Per set of six.....\$1.75



Posnetta Cut Stemware
Thin blown crystal glass, highly polished, with one-piece drawn stems. Each piece is cut with three large silver gray posnetta cuts with silver gray leaves and stems. The popular Fifth Avenue shape.
38K1416-Water Goblet. Height, 6 1/2 inches. Weight, packed, 4 1/2 lbs. Per set of six.....\$1.90
38K1417-Tall Footed Sherbet. Height, 4 1/2 inches. Weight, packed, 4 1/2 lbs. Per set of six.....\$1.75
38K1418-Low Footed Sherbet. Height, 3 1/2 inches. Weight, packed, 4 lbs. Per set of six.....\$1.72
38K1419-Standard Table Tumbler. Height, 3 1/2 inches. Weight, packed, 3 1/2 lbs. Per set of six.....\$1.60
38K1420-Tall Lemonade or Ice Tea Tumbler. Height, 5 1/2 inches. Weight, packed, 4 1/2 lbs. Per set of six.....\$1.75



Daisy Cut Stemware
Thin blown crystal glass, highly polished, with one-piece drawn stems. In a fancy optic (fluted) shape. Each glass is cut with three silver gray daisies with bright polished centers and silver gray leaves and stems of a new and graceful shape.
38K1421-Water Goblet. Height, 6 1/2 inches. Weight, packed, 5 lbs. Per set of six.....\$2.20
38K1422-Tall Footed Sherbet. Height, 4 1/2 inches. Weight, packed, 4 1/2 lbs. Per set of six.....\$2.15
38K1423-Low Footed Sherbet. Height, 3 1/2 inches. Weight, packed, 4 lbs. Per set of six.....\$2.10
38K1424-Standard Table Tumbler. Height, 3 1/2 inches. Weight, packed, 3 1/2 lbs. Per set of six.....\$1.95
38K1425-Tall Lemonade or Ice Tea Tumbler. Height, 5 1/2 inches. Weight, packed, 4 1/2 lbs. Per set of six.....\$2.05



**Chelsea and Cream Set. Thin pressed crystal glass cut with daisies with stems and leaves in silver gray finish. Set consists of one 10-inch cracker plate, star pressed bottom, and one 4 1/2-inch footed compote. Weight, packed, 6 pounds.
38K1406-Per set.....\$1.35**



**14-Piece Lead Tea or Lemonade Set. One 10-inch optic covered pitcher, six tall lead tea or lemonade glasses and six sippers with red bulbs representing cherries. Cut glass conventional floral border and bands in silver gray finish. Wt., pckd., 14 lbs.
38K1407.....\$2.50**

GENUINE HEAVY CUT GLASS



6-Inch Buzz Star Salad Bowl
Cut around the side with three large buzz stars and deep cut and polished miter lines forming hob stars with hob nail center. Bottom cut with large hob star with deep cut and polished lines. Notched cut edge. Weight, pckd., 6 pounds.
38K1408.....\$2.98



Handled Nappie
Cut with three whirling stars and three fan cuttings with heavy mitered lines. Lightly polished notched cut edge.
38K1418-5-inch. Weight, packed, 3 1/2 pounds.....\$1.75
38K1418-6-inch. Weight, packed, 3 1/2 pounds.....\$2.12



8-Inch Daisy Salad Bowl
Cut around the side and bottom with five large silver gray daisies with polished centers and deep cut and polished leaves and stems. Between the daisies is a diamond and hob star cutting. Notched cut edge. Weight, packed, 6 pounds.
38K1409.....\$4.25



6-Inch Buzz Star Sugar and Cream Set
Cut on each side with a large buzz star with silver gray rays and polished diamond and miter cut lines. The bottom is cut with large hob star and polished miter lines. Notched cut edge and handles. Height, 3 in. Wt., pckd., 4 lbs.
38K1418-Per set.....\$3.98



Floral Sugar and Cream Set
Cut with two large silver gray daisies with bright polished leaves and stems. Diamond leaves and miter cut border around the bottom. Cut star bottom and notched cut edge and handles. Height, 3 inches. Weight, packed, 4 lbs.
38K1419-Per set.....\$4.75



10 1/2-Inch Buzz Star Celery Tray
Cut on each end with a large buzz star with deep cut and polished miter lines, large hob star with deep cut and polished lines in center. Notched cut edges. Weight, packed, 5 pounds.
38K1428.....\$2.35



6-Inch Handled Nappie
Cut with a rose and leaf design in silver gray finish on both sides. Pressed star bottom. Weight, packed, 2 lbs.
38K1438.....75c



4-Inch Bon-bon Dish
Cut with two large buzz stars with silver gray rays and bright polished miter lines. Sides and bottom cut with bright polished stars and miters. Notched cut edge. Weight, packed, 3 pounds.
38K1429.....\$1.98



Covered Jam Jar
with spoon, of 6 1/2-inch plate. Thin blown polished crystal glass, with silver gray floral cutting. Wt., pckd., 4 lbs.
38K1437.....75c



**Footed Whipped Cream Bowl. 5-inch footed bowl, one 6 1/2-inch plate and 4 spoon. Made of thin pressed glass cut with sprays of roses in silver gray finish. Wt., packed, 4 pounds.
38K1435.....\$1.25**

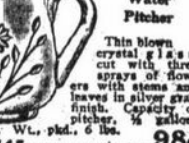
**Daisy Cut Salad or Dessert Plates. Thin pressed crystal glass. Each piece has three sprays consisting of daisies with stems and leaves in silver gray finish. Pressed star bottom. Set consists of six 8-inch plates. Weight, packed, 6 pounds.
38K1436-Per set of six.....\$3.35**



**3 1/2-Inch Oregon Glass Celery Tray. With three sprays of ruffled rose design with leaves and stems in silver gray finish on both sides and bottom. Wt., pckd., 3 1/2 lbs.
38K1430.....\$1.15**



Cut Glass Water Pitcher
Thin blown crystal glass cut with three sprays of flowers with stems and leaves in silver gray finish. Capacity of pitcher, 1/2 gallon.
38K1445.....98c



10-Inch Handled Ham Dish
Thin blown crystal glass cut with three floral sprays and leaves and stems in silver gray finish. Weight, packed, 6 pounds.
38K1447.....\$1.25



7-Piece Cut Glass Water Set
Two-quart 7 1/2-inch fancy shape pitcher and six 1/2-pint tumblers. Each piece is cut with a spray of conventional flowers with stems and leaves in silver gray finish. Wt., packed, 5 lbs.
38K1446.....\$1.98



Conventional Floral Cut Stemware
Thin blown crystal glass highly polished with one-piece drawn stems in fancy optic (fluted) cone shape. Each glass is cut with three flowers and buds and stems in silver gray finish.
38K1430-Water Goblet. Height, 7 inches. Weight, packed, 4 1/2 lbs. Per set of six.....\$2.38
38K1431-Tall Footed Sherbet. Height, 4 1/2 inches. Weight, packed, 4 1/2 lbs. Per set of six.....\$2.35
38K1432-Low Footed Sherbet. Height, 3 1/2 inches. Weight, packed, 4 lbs. Per set of six.....\$2.33
38K1433-Standard Table Tumbler. Height, 3 1/2 inches. Weight, packed, 3 1/2 lbs. Per set of six.....\$1.98
38K1434-Tall Lemonade or Ice Tea Tumbler. Height, 5 1/2 inches. Weight, packed, 4 1/2 lbs. Per set of six.....\$2.35



Plate Etched Stemware
Thin blown crystal glass, highly polished, in a new aristocratic optic (fluted) shape. Solid one-piece drawn stems. Beautifully decorated with a genuine plate etched border in fuchsia design. A very high grade line. Rich and handsome glassware.
38K1440-Water Goblet. Height, 7 inches. Weight, packed, 5 1/2 lbs. Per set of six.....\$4.20
38K1441-Tall Footed Sherbet. Height, 4 1/2 inches. Weight, packed, 4 1/2 lbs. Per set of six.....\$4.18
38K1442-Low Footed Sherbet. Height, 3 1/2 inches. Weight, packed, 4 lbs. Per set of six.....\$4.00
38K1443-Standard Table Tumbler. Height, 3 1/2 inches. Weight, packed, 3 1/2 lbs. Per set of six.....\$3.85
38K1444-Tall Lemonade or Ice Tea Tumbler. Height, 5 1/2 inches. Weight, packed, 4 1/2 lbs. Per set of six.....\$4.00



Floral Cluster Cut Stemware
Thin blown crystal, highly polished glass with one-piece drawn stem in a fancy optic (fluted) shape. Each piece is cut with three sprays of flowers, leaves and stems in silver gray finish. The leaves are cut and polished.
38K1450-Water Goblet. Height, 6 1/2 inches. Weight, packed, 5 lbs. Per set of six.....\$2.13
38K1451-Tall Footed Sherbet. Height, 4 1/2 inches. Weight, packed, 4 1/2 lbs. Per set of six.....\$2.10
38K1452-Low Footed Sherbet. Height, 3 1/2 inches. Weight, packed, 4 lbs. Per set of six.....\$2.00
38K1453-Standard Table Tumbler. Height, 3 1/2 inches. Weight, packed, 3 1/2 lbs. Per set of six.....\$1.93
38K1454-Tall Lemonade or Ice Tea Tumbler. Height, 5 1/2 inches. Weight, packed, 4 1/2 lbs. Per set of six.....\$2.05

These two pages have been sent to us by Bill and Phyllis Hayes, members of the Michigan Caprices Study Group. They borrowed the catalog from Doris and Jay Payne, MI, and we certainly do appreciate their loaning it to us to reproduce here. We all thought it would be fun to give you all a little "quiz" to see how many pieces you can identify as being Cambridge glass. You will find our answers on page 13. Let us hear from you if you agree, disagree, and most importantly if you can identify other pieces. Have fun!

Colored Glassware Is Correct



14-Piece Lead Tea or Lemonade Set
Rose pink or green colored thin glass; 4-pint pitcher and cover, six 12-ounce ice tea or lemonade tumblers, six glass spoon sippers. Weight, packed, 16 pounds.
35K5000—Rose Pink Set...\$2.75
35K5001—Emerald Green Set...2.75



3-Piece Console Set. Rose pink or emerald green colored glass. One 11-inch rolled edge bowl with pressed design, that reflects the light, and two 4-inch candlesticks with wide bases. Wt., packed, 7 pounds.
35K5024—Rose Pink Per Set...\$2.25
35K5035—Emerald Green Set...2.25
35K5037—10-inch pink or blue candles packed, 1 pound.



Covered Vanity Set or Compact. Clear rose pink or emerald green colored glass, and cut on top with a floral and lipstick design. Compartment for puff, rouge, and lipstick. Weight, packed, 3 pounds.
35K5098—Rose Colored Set...\$1.48
35K5099—Emerald Green Colored Set...\$1.48



7 1/2-Inch Fan Shape Vase. Rose pink or emerald green colored glass, with bright pressed panels which reflect the light and adds brilliancy to the vase. Height, 7 1/2 in. Width at top, 6 in. Weight, packed, 3 pounds.
35K5084—Jade Green Bowl...\$1.25
35K5085—Pink Luster Bowl...\$1.25
35K5086—Blue Color Bowl...\$1.25



7-Inch Colored Glass Fruit or Flower Bowl. Jade green, pink luster or blue colored glass, and mounted on an ebony glass detachable base. Height, 5 1/2 in. Wt., packed, 6 lbs.
35K5084—Jade Green Bowl...\$1.25
35K5085—Pink Luster Bowl...\$1.25
35K5086—Blue Color Bowl...\$1.25



10-Inch Fruit or Flower Bowl. With removable flower holder. Rose pink or jade green colored glass in satin finish mounted on an ebony glass detachable base. Height, 4 inches. Weight, packed, 8 pounds.
35K5091—Rose Pink Flower Bowl...\$2.30
35K5092—Emerald Green Flower Bowl...2.30



10-Inch Handled Sandwich Tray. Rose pink or green colored thin glass, octagon shape, cut with floral sprays. Cut lattice background.
35K5016—Rose Pink...\$1.35
35K5017—Emerald Green...\$1.35



8-Inch Colored Glass Cut Salad or Dessert Plates. Thin pressed glass, either rose pink or emerald green color. Cut with a border of leaves and stems in silver gray finish. Weight, packed, 6 pounds.
35K5025—Rose Pink Salad Plates, Set of 6...\$2.35
35K5026—Emerald Green Salad Plates, Set of 6...\$2.35



7-Piece Berry Set
Rose pink or emerald green colored glass with pressed paneled and border design. One 9 1/4-inch berry bowl and six 4 1/2-inch sauce dishes to match. Weight, packed, 10 lbs.
35K5028—Rose Pink. Per set...\$1.89
35K5029—Emerald Green. Set...1.89



3-Piece Console Set. Rose pink or emerald green colored glass. One 11-inch rolled edge bowl with pressed design, that reflects the light, and two 4-inch candlesticks with wide bases. Wt., packed, 7 pounds.
35K5024—Rose Pink Per Set...\$2.25
35K5035—Emerald Green Set...2.25
35K5037—10-inch pink or blue candles packed, 1 pound.



10 1/2-Inch Low Footed Compote. Rose pink or emerald green colored thin glass, and decorated all over with roses and leaves in a light pressed design, in etched effect. Weight, packed, 5 lbs.
35K5046—Rose Pink...\$1.89
35K5047—Emerald Green...1.89



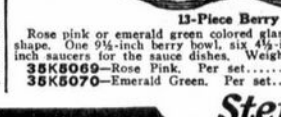
10-Inch Vase. Rose pink or emerald green colored glass, sides cut with flowers in silver gray finish. Pressed and cut border design around top. Weight, packed, 7 lbs.
35K5095—Rose Pink. Per pair...\$1.25
35K5096—Emerald Green. Per pair...\$1.25
35K5097...\$1.48



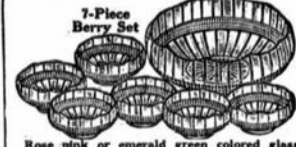
10-Inch Fruit or Flower Bowl. With removable flower holder. Rose pink or jade green colored glass in satin finish mounted on an ebony glass detachable base. Height, 4 inches. Weight, packed, 8 pounds.
35K5091—Rose Pink Fruit Bowl...\$1.65
35K5092—Emerald Green Fruit Bowl...1.65
35K5094—Tangerine Fruit Bowl...1.65



13-Piece Berry Set
Rose pink or emerald green colored glass in an optic (fluted) colonial shape. One 9 1/4-inch berry bowl, six 4 1/2-inch sauce dishes and six 6 1/4-inch saucers for the sauce dishes. Weight, packed, 12 pounds.
35K5069—Rose Pink. Per set...\$2.75
35K5070—Emerald Green. Per set...2.75



Rose Pink Cut Stemware. Thin blown rose pink colored glass in a popular optic (fluted) shape and cut with a rambler rose design.
35K5072—Water Goblets. Height, 6 1/2 inches. Weight, packed, 6 pounds. Per set of six...\$3.00
35K5073—Tall Footed Sherberts. Height, 5 1/2 in. Wt., packed, 5 lbs. Per set of six...\$2.95
35K5074—Standard Table Tumblers. Height, 4 in. Wt., packed, 4 lbs. Per set of six...\$2.50
35K5075—Lemonade or Iced Tea Tumblers. Height, 5 1/2 inches. Weight, packed 5 pounds. Per set of six...\$2.60



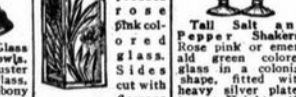
7-Piece Berry Set
Rose pink or emerald green colored glass. Decorated with cut lines forming panels, and a pressed design forming a border. Pressed star in bottom. One 9 1/4-inch berry or sauce bowl and six 4 1/2-inch sauce dishes to match. Weight, packed, 10 pounds.
35K5028—Rose Pink Set...\$2.75
35K5029—Emerald Green Set...2.75



3-Piece Console Set. Rose pink or emerald green colored glass. One large 12 1/4-in. bowl with rock crystal design in silver gray finish and two 3 1/2-in. candlesticks with wide bases. Weight, packed, 9 pounds.
35K5041—Rose Pink...\$2.75
35K5042—Emerald Green...2.75
35K5043—Rose Pink...2.75
35K5044—Emerald Green...2.75



10 1/2-Inch Low Footed Compote. Rose pink or emerald green colored thin glass, and decorated all over with roses and leaves in a light pressed design, in etched effect. Weight, packed, 5 lbs.
35K5046—Rose Pink...\$1.89
35K5047—Emerald Green...1.89



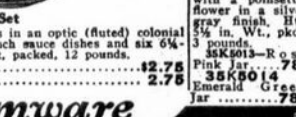
10-Inch Vase. Rose pink or emerald green colored glass, sides cut with flowers in silver gray finish. Pressed and cut border design around top. Weight, packed, 7 lbs.
35K5095—Rose Pink. Per pair...\$1.25
35K5096—Emerald Green. Per pair...\$1.25
35K5097...\$1.48



10-Inch Fruit or Flower Bowl. With removable flower holder. Rose pink or jade green colored glass in satin finish mounted on an ebony glass detachable base. Height, 4 inches. Weight, packed, 8 pounds.
35K5091—Rose Pink Fruit Bowl...\$1.65
35K5092—Emerald Green Fruit Bowl...1.65
35K5094—Tangerine Fruit Bowl...1.65



13-Piece Berry Set
Rose pink or emerald green colored glass in an optic (fluted) colonial shape. One 9 1/4-inch berry bowl, six 4 1/2-inch sauce dishes and six 6 1/4-inch saucers for the sauce dishes. Weight, packed, 12 pounds.
35K5069—Rose Pink. Per set...\$2.75
35K5070—Emerald Green. Per set...2.75



Plated Etched Rose Pink Stemware
Thin blown rose pink colored glass, highly polished in an exceptionally delicate optic shape. The goblets and tall sherberts have one-piece drawn stems. The table and iced tea tumblers are the new cone shape. The decoration is of fine plate etching, as the illustration shows.
35K5076—Water Goblets. Height, 7 in. Wt., packed, 6 lbs. Per set of six...\$3.85
35K5077—Tall Footed Sherberts. Ht., 5 1/2 in. Wt., packed, 5 lbs. Per set of six...\$3.50
35K5078—Table Tumblers. Height, 4 1/2 in. Wt., packed, 4 lbs. Per set of six...\$2.75
35K5079—Lemonade or Iced Tea Tumblers. Height, 5 1/2 inches. Wt., packed, 5 lbs. Per set of six...\$3.00



7-Piece Water Set
Thin blown rose pink or emerald green colored glass in a fancy shape optic (fluted) design. Set consists of one 4-pint fancy shape pitcher, 9 inches high, and six 3 1/2-pint tumblers to match. Weight, packed, 10 lbs.
35K5080—Rose Pink...\$2.25
35K5081—Emerald Green...2.25



5-Piece Bridge Sets. Crystal glass in rose pink or emerald green color. Four-compartment handled tray and four 10-ounce optic (fluted) tumblers. Wt., packed, 8 lbs.
35K5082—Rose Pink Set...\$1.98
35K5083—Emerald Green Set...1.98



4-Piece Vanity Set. Rose pink or green colored glass in satin finish. One 11-inch compartment tray, one 4-in. powder box and two 5-in. perfume bottles with ground stopper droppers. Wt., packed, 10 lbs.
35K5086—Satin Finish Rose Pink Set...\$2.50
35K5087—Satin Finish Green Set...\$2.50



Perfume Bottles With Droppers. Rose pink or emerald green colored glass with a brilliant luster. The top of the dropper forms a rosebud. Ht., 7 in. Wt., per pair, packed, 4 lbs.
35K5088—Rose Pink...\$1.45
35K5089—Emerald green. Per pair...\$1.45



Large 10-Inch Footed Orange or Fruit Bowl. Rose pink colored glass in a brilliant pressed glass design. Around the bowl there are six panels, each showing two cut flowers in silver gray finish. Height, 6 1/2 in. Weight, packed, 10 lbs.
35K5105...\$1.75



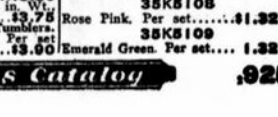
Mayonnaise Dish and Plate With Spoon. Thin pressed glass with rose pink or green color. Rolled edge dish, cut with floral spray. Plate has border of cut leaves and stems. One 6 1/2-in. dish, 8-in. plate and ladle. Weight, packed, 4 pounds.
35K5064—Rose Pink...\$1.45
35K5065—Emerald Green...1.45



Whipped Cream or Mayonnaise Set. Thin blown rose pink or emerald green colored glass in optic (fluted) design. One 4 1/2-inch dish, 6 1/2-inch plate and glass spoon. Wt., packed, 4 lbs.
35K5102—Rose Pink Set...\$1.98
35K5103—Emerald Green Set...1.98



Colonial Sugar and Cream Set. Rose pink or emerald green colored glass in satin finish. Height, 3 1/2 inches across handles of sugar bowl, 7 1/4 inch.
35K5067—Rose Pink. Per set...\$1.98
35K5068—Emerald Green. Per set...98c



7-Piece Celery Set. Rose pink or emerald green colored glass. One 11 1/4-inch oval tray and six 2 1/2-inch oval individual salt dips. Weight, packed, 3 1/2 pounds.
35K5108
Rose Pink. Per set...\$1.32
35K5109
Emerald Green. Per set...1.32

Stemware

Rose Pink Cut Stemware. Thin blown rose pink colored glass in a popular optic (fluted) shape and cut with a rambler rose design.
35K5072—Water Goblets. Height, 6 1/2 inches. Weight, packed, 6 pounds. Per set of six...\$3.00
35K5073—Tall Footed Sherberts. Height, 5 1/2 in. Wt., packed, 5 lbs. Per set of six...\$2.95
35K5074—Standard Table Tumblers. Height, 4 in. Wt., packed, 4 lbs. Per set of six...\$2.50
35K5075—Lemonade or Iced Tea Tumblers. Height, 5 1/2 inches. Weight, packed 5 pounds. Per set of six...\$2.60

Plated Etched Rose Pink Stemware
Thin blown rose pink colored glass, highly polished in an exceptionally delicate optic shape. The goblets and tall sherberts have one-piece drawn stems. The table and iced tea tumblers are the new cone shape. The decoration is of fine plate etching, as the illustration shows.
35K5076—Water Goblets. Height, 7 in. Wt., packed, 6 lbs. Per set of six...\$3.85
35K5077—Tall Footed Sherberts. Ht., 5 1/2 in. Wt., packed, 5 lbs. Per set of six...\$3.50
35K5078—Table Tumblers. Height, 4 1/2 in. Wt., packed, 4 lbs. Per set of six...\$2.75
35K5079—Lemonade or Iced Tea Tumblers. Height, 5 1/2 inches. Wt., packed, 5 lbs. Per set of six...\$3.00

Do Your Christmas Shopping From This Catalog 925

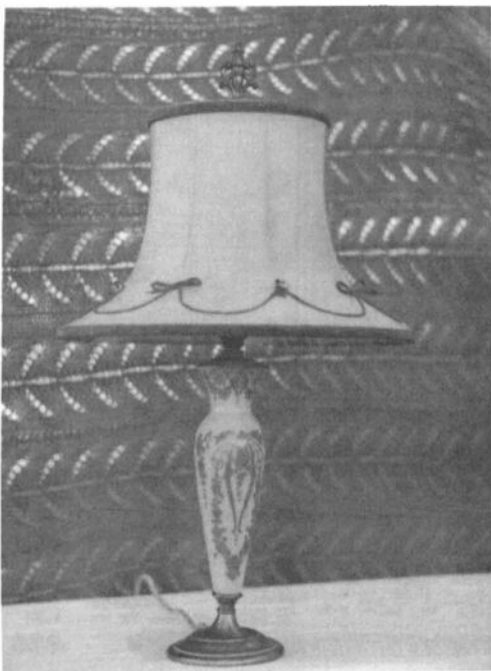
we get letters

Dear NCC: I'll have to admit that I am one that considered not renewing my (membership) subscription. However, before doing this, I decided to review the past year's issues. Lo and behold, there seemed to be much information I enjoyed knowing. Of course, there was some I had no interest in, even though I love Cambridge glass. I think one forgets what good information the issues contain if you do not once again read them. It was almost like getting new issues!

Now for some questions that I hope you can answer. Enclosed are two pictures. Crown Tuscan etched Diane gold encrusted lamp - I actually have a pair with which I believe are the original shades. Can you confirm that these shades are original? How many of the vases were sold to lamp companies? Are these lamps considered rare? The other picture is of a pair of Primrose Doric Column Candlesticks lamps. I see there was a pair in the Auction list which said "drilled for lamps". Now, I assume that these were drilled through, which would have left an unpolished surface. My lamps have a smooth surfaced hole through the entire middle length that the wire, etc., goes through. Would like clarification of this difference - if there is one. Did Cambridge issue these as lamps or were the candlesticks bought by a company to be made into lamps, or were they made up by the factory workers? Are these considered rare?

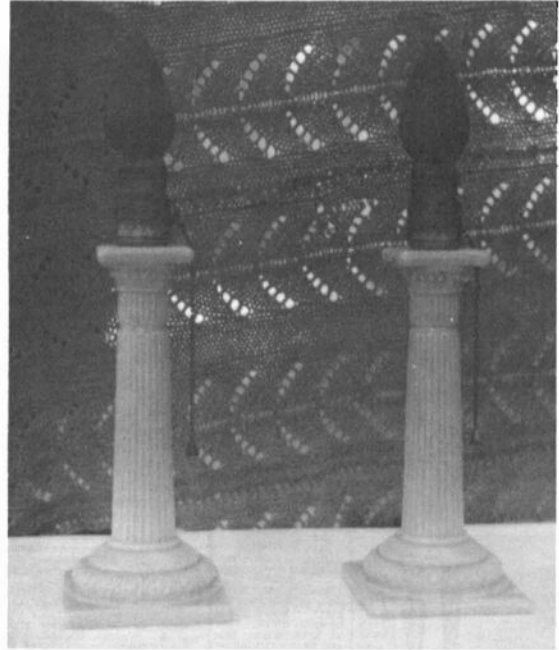
Perhaps these questions have already been answered but I do not have the issues, having only subscribed the past year.

Really enjoyed the information on Rubina in the March issue. Now, that is something that is not widely known.



You have my permission to use the enclosed pictures in a future issue if you so desire. Always enjoy chatting about Cambridge glass.

Sincerely, Ruth Donnell, OH



Dear Ruth, We will try our best to answer your questions, but in all honesty, it really is a matter of your guess being as good as ours! Your lamp shades are undoubtedly original, but we have nothing to prove this - only a feeling, because they are certainly of the style that was in vogue during the 1930's and 40's.

Your description of your Primrose Doric Candlestick lamps confirms that they are identical to the pair sold at the NCC Auction this past February. The holes were not drilled, but were apparently made by pushing a hot rod through them, possibly while they were still in the mold. The pair sold during the Auction for \$95.

It would be difficult to say whether or not these lamps can be considered rare. They certainly can be described as scarce and very desirable pieces of Cambridge glass! It is most unfortunate that our research efforts to date have not turned up information concerning how these and other vase-lamps came into being. This is just one more time when we have to state that we do not have all of the answers - YET!

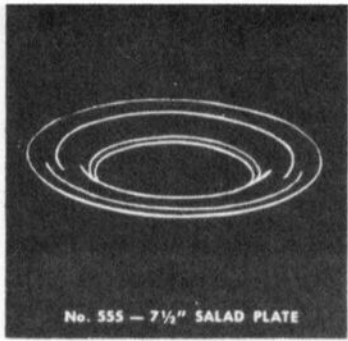
We are certainly glad that you did re-read your issues of the CRYSTAL BALL and that you renewed your NCC membership. We are constantly trying to keep our members informed, and letters such as yours helps us to accomplish this goal.

Sincerely, Phyllis

"No age or time of life, no position or circumstance has a monopoly on success. Any age is the right age to START DOING SOMETHING." WYNN JOHNSON



No. 3790 — CORDIAL



No. 555 — 7 1/2" SALAD PLATE



No. 3790 — LOW SHERBET



No. 3790 — 12 OZ. FTD ICE TEA



No. 3790 — COCKTAIL



No. 3790 — WINE



No. 3790 — 5 OZ. FTD TUMBLER



No. 3790 — OYSTER COCKTAIL

Festoon

No. 1071

ROCK CRYSTAL ENGRAVED



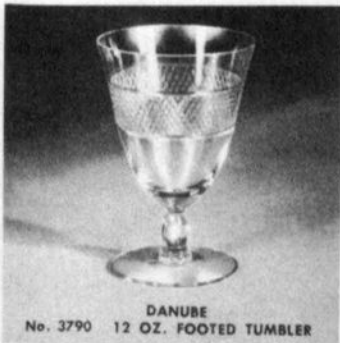
No. 3790 — CLARET



No. 3790 — GOBLET FESTOON



No. 3790 — COCKTAIL



DANUBE
No. 3790 12 OZ. FOOTED TUMBLER

Blue Danube

No. 32P

ROCK CRYSTAL ENGRAVED



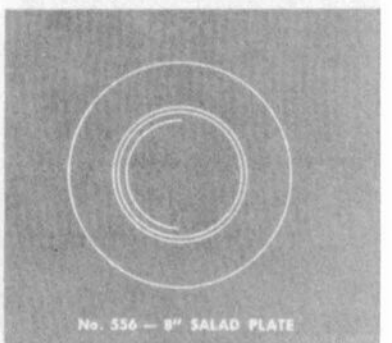
No. 3790 — GOBLET



No. 3790 — 12 OZ. FTD TUMBLER



No. 3790 — LOW SHERBET



No. 556 — 8" SALAD PLATE



No. A 56 - WINE



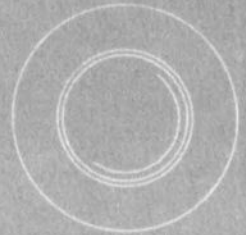
No. A 56 - COCKTAIL



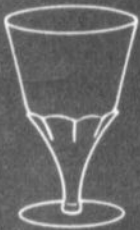
No. A 56 - 5 OZ. FTD TUMBLER



No. A 56 - CORDIAL



No. 556 - 8" SALAD PLATE



No. A 56 - 12 OZ. FTD TUMBLER

Formal

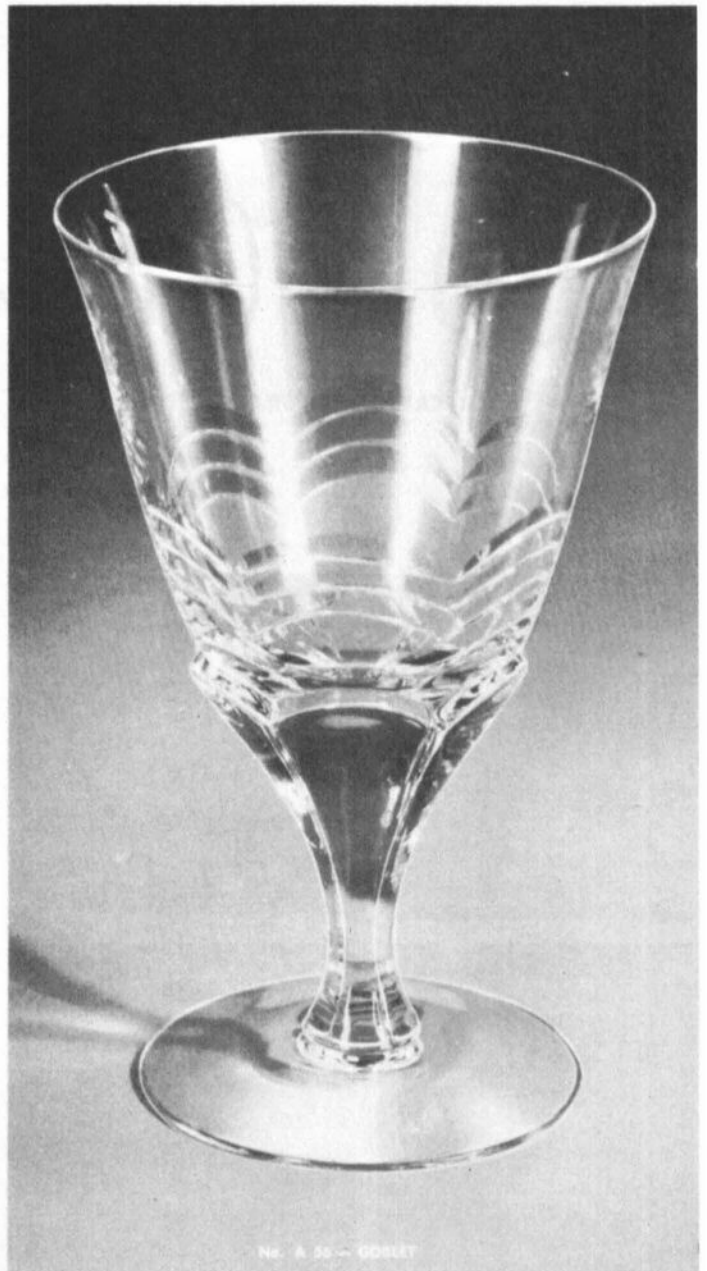
ROCK CRYSTAL ENGRAVED



No. A 56 - CLARET



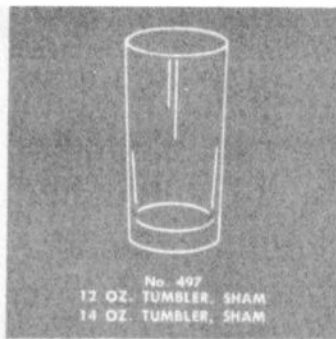
No. A 56 - SHERBET



No. A 56 - GOBLET



No. 7801 — 4 OZ. COCKTAIL



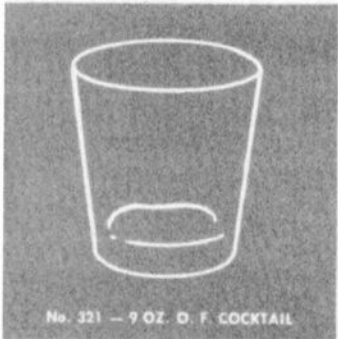
No. 497
12 OZ. TUMBLER, SHAM
14 OZ. TUMBLER, SHAM



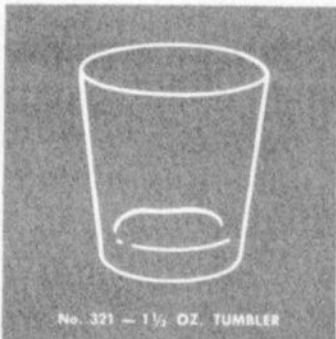
No. P101 — COCKTAIL SHAKER



No. 321 — 12 OZ. O. F. COCKTAIL



No. 321 — 9 OZ. D. F. COCKTAIL



No. 321 — 1 1/2 OZ. TUMBLER



No. 497
FLEUR-DE-LIS 14 OZ. TUMBLER



No. 497 — STAR 14 OZ. TUMBLER



STAR

FLEUR-DE-LIS

No. P-92 — 26 OZ. DECANTER



No. 497
LATTICE 14 OZ. TUMBLER



No. 497 — SWIRL 14 OZ. TUMBLER



No. 7801
1 OZ. POUSSE CAFE

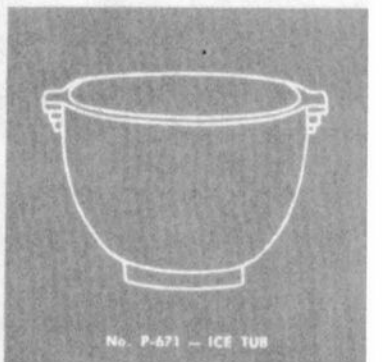


No. 3900/114
32 OZ. MARTINI JUG

ROCK CRYSTAL ENGRAVED
*Matched
Barsemble*



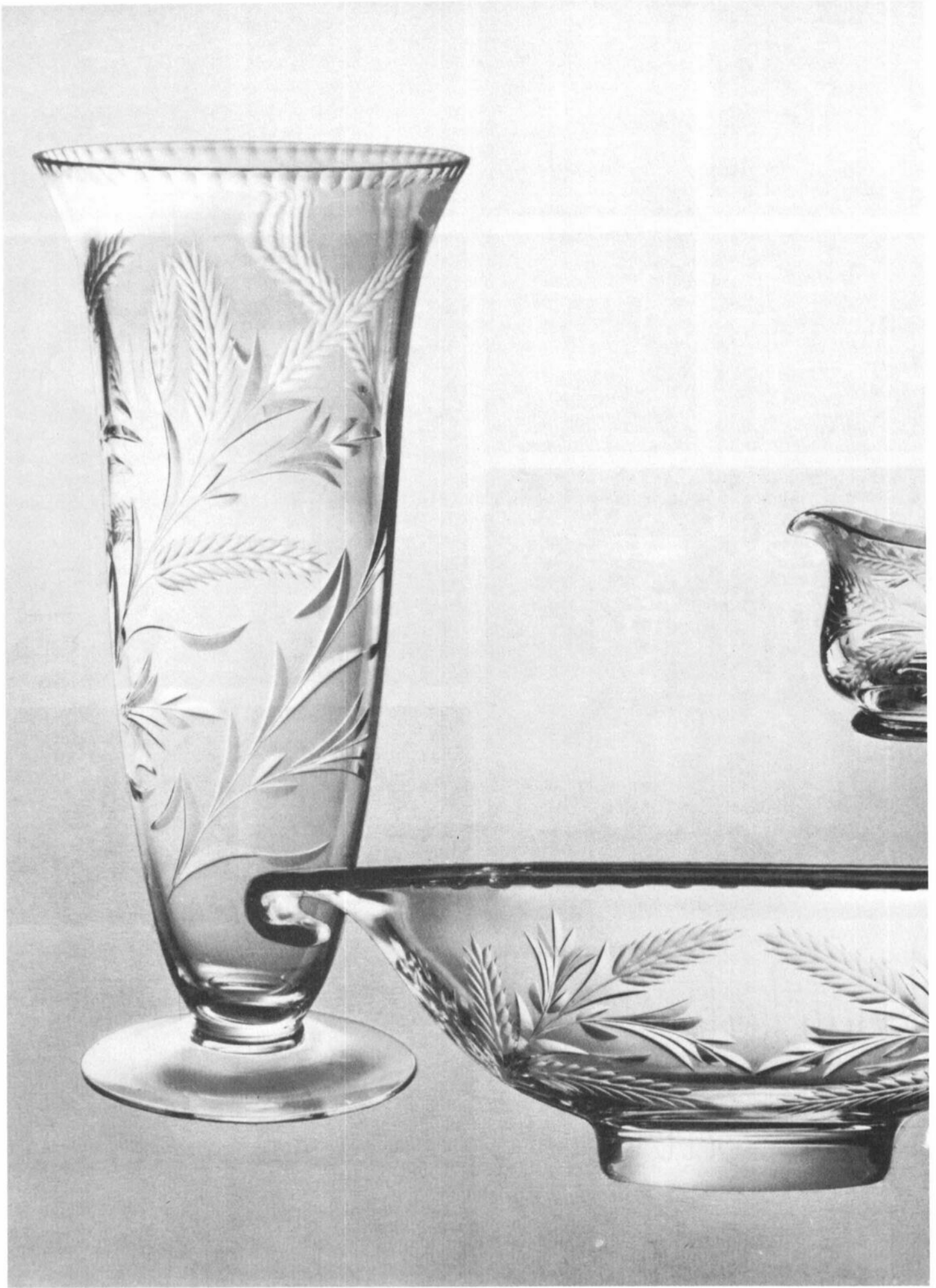
No. 7801
5 OZ. WHISKEY SOUR



No. P-671 — ICE TUB



THE CAMBRIDGE GLASS COMPANY, CAMBRIDGE, OHIO, U. S. A.



**STUDY GROUP #8 - SOUTHERN MICHIGAN
"THE MICHIGAN CAPRICES"**

Spring was in the air, yellow daffodils were in an amber Betty etched vase, and a mixture of gorgeous Cambridge glassware colors were on the table. Can you picture emerald green, gold rimmed, Decagon luncheon plates; peachblo Decagon cups and saucers; assorted colors of Georgian tumblers; tall, dianthus pink Candlesticks; and a #2695 Nearcut centerpiece bowl? This is what awaited the members of the Michigan Caprices Study Group on March 29th, when they met in the home of Frank and Phyllis Hayes.

Phyllis presented a program on how stems were formed and attached to the bowl and foot. (see April '81 C.B., pg 7) The NCC slide presentation on Stems was also shown. All members brought stems for discussion.

Betty Dasen brought Cordials that had been sold to her for Cambridge glass, but in studying the stem and colors, it was determined that they were not Cambridge. Betty plans to take them to the NCC Convention for further identification.

"Show & Tell" featured mandarin gold Calla Lily candlesticks, and a crown tuscan Gadroon plate.

Clara Brown would like to know if anyone other than Cambridge, made a color similar to heatherbloom. Can anyone help us on this?

We are looking for new members for our Study Group. If you are interested in joining us, please call Betty Dasen at 313/659-3243.

submitted by Betty Dasen, Secretary
continued

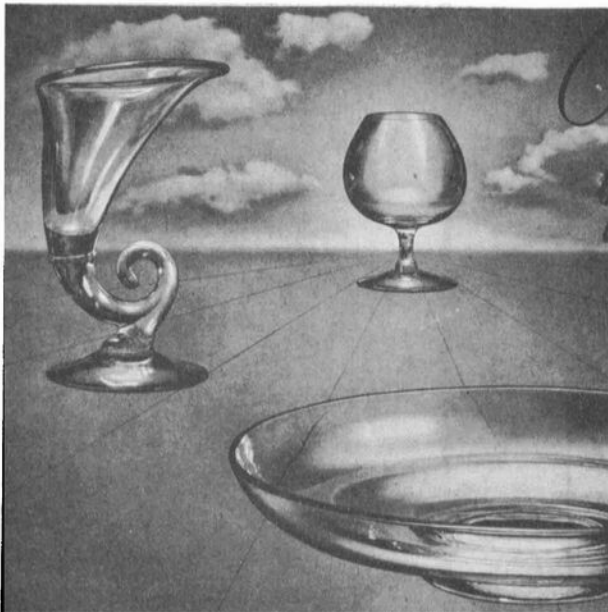
EDITOR'S NOTE: Several other companies made a color similar to the Cambridge heatherbloom. Examples are: Heisey's Alexandrite; Tiffin's Twilight; and Fostoria's Wisteria. Undoubtedly there were others.

FEATURED BY SEARS continued from page 7

- Cambridge items shown on page 920 (C.B. pg. 6).
(35K1440-1444) Plate Etched Stemware - #7606 Marjorie pattern
- Cambridge items shown on page 925 (C.B. pg. 7)
(35K5028-5029-5031-5032) 7-Piece Berry Sets - Weatherford pattern w/#39 engraving
(35K5034-5035) 3-Piece Console Set - Martha Washington pattern
(35K5083-5084) 5-Piece Bridge Set - #623 Bridge set w/narrow optic tumblers
(35K5022-5023) Book Ends - #511 Tombstone bookends
(35K5098-5099) Covered Vanity Set or Compact - #680 Compact
(35K5086-5087) 4-Piece Vanity Set - #589/189 Vanity set
(35K5089-5090) Perfume Bottles With Droppers - #206 1-1/2 oz. Cologne w/Rosebud stopper
(35K5051-5052) 7-1/2 In. Fan Shape Vase - #17 Martha Washington pattern
(35K5095-5096) Tall Salt and Pepper - #395 shown w/Round pattern in 1930
(35K5019-5020) Candy Box - #43 Martha Washington pattern w/early style knob
(35K5076-5079) Plate Etched Rose Pink Stemware - #3060 Stemware w/#520 etching
(35K5108-5109) 7-Piece Celery Set - #652 Celery w/#606 Celery dips

Oh yes, I'll take a dozen pair (6 rose pink and 6 emerald green) of the Perfume bottles with the Rosebud stoppers at \$1.45 per pair! And that my friends is the stuff that dreams are made of!!!

This advertisement has been sent to us courtesy of Mildred Willey, OH. It is taken from the July 1946 issue of China, Glass and Decorative Accessories.



*Crystal
by Cambridge*

**...it outlives
passing fashion**

Every Cambridge piece is endowed with the touch of distinction — pure forms of timeless beauty, hand-wrought in table crystal of the most exquisite richness and brilliance. Which is why today, as always, discerning hostesses proudly distinguish their table settings with "Crystal by Cambridge" . . . table and decorative crystal that outlives passing fashion.



THE CAMBRIDGE GLASS CO.
CAMBRIDGE, OHIO

CUT AND DEEP PLATE ETCHED.
WATER AND ICE TEA SETS.



No. 106. 66 oz. Jug and Cover
No. 8701. 12 oz. Tumbler
Cut 4076



No. 111. 3 1/2 Pint Jug
No. 8851. 9 oz. Tumbler
Cut 4078



No. 108. 3 1/2 Pint Jug
No. 1630. 10 oz. Table Tumbler
Cut 4100



No. 107. 66 oz. Jug and Cover
No. 8858. 12 oz. Tumbler
Cut 4100



No. 109. 3 1/2 Pint Jug
No. 9415. 9 oz. Tumbler
Cut 4077



No. 110. 4 pint Jug
No. 8425. 9 1/2 oz. Tumbler 1/2 Sham
Cut 4056



No. 93. 3 Pint Jug
No. 1630. 8 oz. Tumbler
Cut 887



No. 4060. 1/2 Gal. Jug
No. 4060. 8 oz. Tumbler
Cut 4054



No. 96. 3 Pint Jug
No. 9415. 9 oz. Tumbler
Cut Grape



No. 96. 3 Pint Jug
No. 9415. 9 oz. Tumbler
Cut 813



No. 105. 53 oz. Jug
No. 9415. 9 oz. Tumbler
Cut 2097



No. 98. 77 oz. Jug
No. 1415. 10 oz. Tumbler
P. E. 533



No. 110. 4 Pint Jug
No. 1415. 10 oz. Tumbler
P. E. "Betty"



No. 96. 3 Pint Jug
No. 1630. 10 oz. Table Tumbler
P. E. 532



No. 107. 66 oz. Jug and Cover
No. 8701. 12 oz. Tumbler
P. E. 533



No. 98. 77 oz. Jug and Cover
No. 8701. 12 oz. Tumbler
P. E. 523



NATIONAL CAMBRIDGE COLLECTORS

FLEA MARKET

Saturday — June 27th

6 AM — 5 PM

GUERNSEY COUNTY FAIRGROUNDS

OLD WASHINGTON, OHIO

(one mile East of I-70, Exit #186, on Old U.S. 40)

DEALER SPACE AVIALABLE

For information or Contract write: Larry Hughes, Chrm., P.O. Box 416, Cambridge, OH 43725

STAGE COACH ANTIQUE MALL

(formerly White Pillars Antiques)

7525 East Pike

Norwich, OH 43767

614/872-3720

MANY DEALERS

PLENTY OF PARKING

WIDE SELECTION OF GLASS

AND POTTERY

FURNITURE AND

GENERAL LINE!

BUY ----- SELL ----- TRADE

OPEN YEAR ROUND

Weekdays - 10 AM - 5:30 PM

Sunday - 12 noon - 5:30 PM

Summer Evening Hours - by Chancel

Located 9 miles E. of Zanesville, OH, on I-70 to Norwich
Exit #164 - then 1/2 mile W. on Route 40.

— Classified —

WANTED: CAMBRIDGE ROYAL BLUE - Anything - but love
Nude Stem items. If you see Cobalt - think COBALT CAROL
Markowski, 3141 West Platte Ave., Colorado Springs, CO 80904.

BUYING: CAMBRIDGE ROSEPOINT; Depression Glass; Heisey
Rose and Orchid; and Fostoria etched dinnerware. Also glass
figures and unusual pieces. Nadine Pankow, 207 S. Oakwood,
Willow Springs, IL 60480. Phone: 312/839-5231.

WANTED: CAMBRIDGE ELAINE pattern. Need four wines and
two goblets. Would consider additional pieces if necessary.
V. Leonard, P.O. Box 848, Bothell, WA 98011.

FOR SALE: MOUNT VERNON 8-1/2" bowl, marked, \$25; #1147
Ice Tub w/cutting, open handles, marked, \$22; Dessert plates,
show wear, marked, Decagon moonlight blue, 6 @ \$5 ea. or Set \$25;
#3400 ebony 7" Gadroon blank, Valencia etch, not marked, show
wear, 6 @ \$5 ea. or Set \$25; Candlesticks, one-lite #646, 5" pink, 10
sided base, \$30 pair; #627, 4" ebony \$35 pair. Postage Extra! Sue
Otteman, 3621 Post Oak, New Orleans, LA 70114.



63
Mount Vernon
3 1/2 in. Ash Tray



68
Mount Vernon
4 in. Ash Tray

DEALERS



DIRECTORY

NOTE: When writing to the Dealers listed here, please enclose a SASE!

<p>EVELYN M. ALLEN 135 Cynthia Street Heath, Ohio 43055 Mail Order & Shows 614-522-1635 SPECIALIZING IN CAMBRIDGE GLASS!</p>	<p>BENICIA ANTIQUE SHOP 305 First Street Benicia, California 94510 OPEN 11 AM - 5 PM Closed Monday Z. E. LOPES 707-745-0978 VISIT HISTORIC BENICIA and its 28 shops Off Interstate #80 North of San Francisco</p>	<p>CHARLES MIKULIK Box 416 Elizabeth, N.J. 07207 — COLLECTOR — Always paying good prices for CAMBRIDGE CAPRICE in all colors 201-372-1101 CARRY MOST TYPES OF ANTIQUES</p>
<p>BLACK ROOSTER ANTIQUES 1018 Clark Street Cambridge, Ohio 43725 614-432-3202 M. Sipe CAMBRIDGE GLASS - GENERAL LINE</p>	<p>ANDREJCAK'S ANTIQUES 14533 Bayes Ave. Lakewood, Ohio 44107 Joe & Karen Andrejcek 216-226-3417 SHOWS ONLY — CAMBRIDGE — FENTON — CHINA</p>	<p>COYLE & SCHUSTER ANTIQUES Box 982 - Ph. 614-349-7362 Newark, Ohio 43055 Shows & Mail Order BUY & SELL - CAMBRIDGE - HEISEY</p>
<p>BERKELEY ANTIQUES 69 Berkeley St. Boston, MA 02116 George or Frank 617-426-1048 CAMBRIDGE, HEISEY, GENERAL LINE</p>	<p>THE HITCHING POST 7467 S. R. 88 Ravenna, OH 44266 Ph. 216-296-3686 D. McDaniel CAMBRIDGE — HEISEY — GENERAL LINE</p>	<p>FINDER'S KEEPER'S ANTIQUES P.O. Box 303 P.O. Box 16023 Dayton, O. Columbus, O. 45401 43216 513-254-2937 614-885-2726 SPECIALIZING IN CAMBRIDGE GLASS!</p>
<p>D & D ANTIQUES Columbus, Ohio DICK SLIFKO SHOWS ONLY</p>	<p>GEORGE HOFFMAN ANTIQUES 129 South 4th Street Newark, Ohio 43055 614-345-8021</p>	<p>'OUR GLASS ANTIQUES Box 27, Wills Point, Texas 75169 20th CENTURY COLLECTIBLES featuring CAMBRIDGE GLASS! Shows - No Lists - SASE Please PAUL & GINNY HENDERSON 214-563-6971</p>
<p>THE GLASS CUPBOARD 39 Shire Oaks Drive Pittsford, New York 14534 Marcia Ellis 716-586-7596 CAMBRIDGE ONLY SASE FOR LIST</p>	<p>THE KRAUSE'S 944 Jefferson Ave. Washington, PA 15301 John & Gail Krause 412-228-5033 SPECIALIZING IN DUNCAN MILLER GLASS</p>	<p>1886 HOUSE East Schodack, N.Y. 12063 MAIL and SHOWS Laurie Cruise 518-477-5895 CAMBRIDGE - NORITAKE - AZALEA - D.G.</p>
<p>LASHER ASSOCIATES 119 Water St. Gaithersburg, Md. 20760 Faith Lasher 301-977-8296 SPECIALIZING IN GLASSWARE</p>	<p>ROLLING ACRES ANTIQUES 66484 N. 8th Street Road Cambridge, Ohio 43725 Sandy Jenkins & Anne Ingram 614-432-2570 CAMBRIDGE & GENERAL LINE ANTIQUES</p>	<p>BILL & SHARON PHILLIPS 21730 Priday Euclid, Ohio 44123 Ph. 216-261-4665 Shows Only BUYING GLASS, ANTIQUES, ETC.</p>
<p>STAGE COACH ANTIQUE MALL 7525 (Rt. 40E) East Pike Norwich, Ohio 43767 SOMETHING FOR EVERYONE Open every day, year round — 614-872-3720</p>	<p>AL STEELE Westerville, Ohio 614-882-6483 or 614-882-7124 Mail Orders and Shows Only HEISEY — CAMBRIDGE — PATTERN GLASS</p>	<p>SWISS HILLS COLLECTIBLES 303 Guilford Ave., Woodsfield, OH 43793 Mary & Wilbur Henderson 614/472-1133 SPECIALIZING IN CAMBRIDGE GLASS Shows, Mail & Stagecoach Antique Mall</p>
<p>CHARLES A. SHAW Glenwood Gardens - R.V.W.1B Yonkers, NY 10701 AMERICAN GLASS — 914-476-5175 SHOWS & MAIL ORDER!</p>	<p>SHIRLEY S. LADOUCEUR Antiques and Collectibles Specializing in Cambridge Glass BY APPOINTMENT 7597 Daphne Drive 315-458-5297 No. Syracuse, NY 13212</p>	<p>GLASS MENAGERIE ANTIQUES Cambridge - General Line New Collectable Glass YVONNE L. GORDON Route #2 614-826-7140 New Concord, OH 43762</p>
<p>MARGARET LANE ANTIQUES 2 E. Main St., New Concord, OH 43762 Lynn Welker 614/826-4418 CAMBRIDGE GLASS MATCHING SERVICE Hours Mon.-Fri. 1-5 PM or by Appointment</p>		



ANTIQUE SHOW & SALE

(& 8th Annual (NCC Convention))

SHERANDOAH INN

INTERSTATE 70 .. EXIT 186 .. 7 MILES EAST OF
CAMBRIDGE OHIO

JUNE 26, 27, 28, 1981

FRIDAY, JUNE 26th	6:00 - 9:00
(PREVIEW)	
SATURDAY, JUNE 27th	11:00 - 6:00
SUNDAY, JUNE 28th	12:00 - 6:00
(ADMISSION \$1.75)	

OFFERING CAMBRIDGE AND OTHER FINE GLASSWARE
ALONG WITH SEVERAL TONS OF ANTIQUES
FOOD DOOR PRIZES PARKING

HAVING A SPRING GARDEN THIS YEAR?

Here's one garden it would be well for all of us to plant:

First, five rows of peas - Preparedness, Promptness, Perseverance, Politeness and Prayer.

Next, three rows of squash - Squash Gossip, Squash Criticism, Squash Indifference.

Then five rows of lettuce - Let us be Faithful, Let us be Unselfish, Let us be Loyal, Let us Love One Another, and Let us be Truthful.

No garden is complete without turnips - Turn up for Meetings, Turn up with a Smile, Turn up with a New Idea, and Turn up with Real Determination!



National Cambridge Collectors, Inc.

P. O. Box 416
Cambridge, Ohio 43725

FIRST-CLASS MAIL
U.S. POSTAGE
PAID
So. Vienna, Ohio
45360
Permit No. 15

FIRST CLASS MAIL

PLEASE RETURN YOUR CONVENTION REGISTRATION FORM SOON - IT MUST BE POSTMARKED BY JUNE 10th!