

Cambridge



Crystal Ball

ISSUE NO. 106

FEBRUARY 1982

Published monthly by the NATIONAL CAMBRIDGE COLLECTORS, Inc.
To encourage and to report the discovery of the elegant and boundless product
of the Cambridge Glass Company, Cambridge, Ohio

THOUGHTS from your President . . .

Hope you all received what you wanted for Christmas (Cambridge Glass I suppose), and rang the New Year in with a bright look to 1982. Resolutions were probably made by most of us, and by now most of us have probably found them to be short lived. Resolutions are usually made in a moment of spontaneous gaiety and as the gaiety wears off we forget that we are supposed to continue what we resolved for at least the remainder of the year. I envy people who have the patience and fortitude to stick to them. All in all I've done pretty well during the first month. I made five resolutions and I've only given up on the two easiest ones; to be the first man on the moon; and to be affluent enough to buy every piece of glass I like. The three most difficult ones, with a lot of teeth gritting and sacrifice, I will continue. They are: to seek out and buy every piece of Cambridge Glass I can find, to drive on the right side of the road, and to read and study everything I can about glass. (Such sacrifice).

Let's look back through 1981 and see what we had to talk about. First, there was the Auction in February, very well attended, and sending many people away with a sly smile on their faces. In June there was the super Convention with Show and Sale at the Shenandoah Inn. Also it was announced that we would renovate the building on our NCC property to be used as a MUSEUM. The following month there was a change in our *Crystal Ball* Editor, if you can call from super to super a change. Much work was done on the MUSEUM by a group of hard working volunteers, and many people who could not feasibly have a hand in the work donated material and money to see it become a reality. In November there was a popular Quarterly Meeting with all the fun and fine program that is typical of the regular Quarterly Meetings held during the year. If you missed these activities during 1981, make plans now to attend at least one during 1982.

Speaking of plans, the next Quarterly Meeting, featuring a fine program and Show and Tell, is only about three weeks away — on February 26th. The 1982 Annual Auction is scheduled for the following day — February 27th. Your Auction details were mailed with the January *Crystal Ball*, and by now you should have chosen all the pieces you wish to bid on. Even if you don't wish to buy anything, come and enjoy a great weekend. We'd love having you! The January *Crystal Ball* gives you all the information for making reservations.

Willard



169-6 in. Heart

MEMBERSHIP RENEWAL NOTICE

If the date on your
address label is --

2-82

This is your **LAST ISSUE** of the **CRYSTAL BALL**.

Please renew **NOW!**

CAMBRIDGE CRYSTAL BALL

Official publication of National Cambridge Collectors, Inc., a non-profit corporation with tax exempt status. Published once a month for the benefit of its members.

Membership is available for individual members at \$10 per year and additional members (12 years of age and residing in the same household) at \$3 each. All members have voting rights, but only one *Crystal Ball* will be mailed per household.

Back issues of the *Crystal Ball* are available (beginning with Issue No. 1, May 1973) for members only. Cost: \$.60 each or 12 issues for \$7.

1981-82 OFFICERS & COMMITTEE CHAIRPERSONS

PRESIDENT Willard Kolb
 VICE-PRESIDENT Josephine Barstow
 SECRETARY Janice Hughes
 TREASURER William Smith
 SERGEANT-AT-ARMS Don Armbrrecht

BOOK SALES Meg Turner
 BUDGET & FINANCE David Rankin
 BY-LAWS David Rankin
 CONVENTION Josephine Barstow
 MEMBERSHIP Phyllis Smith
 MUSEUM Billy Harbaugh
 PROGRAM & ENTERTAINMENT Frank Wollenhaupt
 PROJECT Willard Kolb
 PUBLIC RELATIONS William Smith
 PUBLICITY Joseph Andrejcek
 STUDY GROUP ADVISORY Jack Rettig
 1982 ALL-CAMBRIDGE AUCTION Lynn Welker
 1982 ANTIQUE SHOW Joy McFadden

CRYSTAL BALL EDITOR Peg Gotschall

CLASSIFIED ADVERTISING RATES

5c per word \$1.00 minimum
 We cannot mix type size in classified advertisements. Abbreviations and initials will count as words. Payment in full MUST accompany all ads.

DISPLAY ADVERTISING RATES

| | Members | Non-Members |
|-----------------|---------|-------------|
| 1/8 page | \$ 4.00 | \$ 6.00 |
| 1/4 page | 7.00 | 10.00 |
| 1/2 page | 12.00 | 18.00 |
| 3/4 page | 17.00 | 25.00 |
| Full page | 22.00 | 33.00 |

DEALERS DIRECTORY

1" ad (5 line maximum) \$6.00 for 6 months

Cambridge Crystal Ball assumes no responsibility for items advertised and will not be responsible for error in price, description or other information.

Advertising copy must be in our hands by the 10th of each month to assure publication in our next issue. Advertisements containing reproductions will not knowingly be accepted unless clearly stated.

PLEASE ADDRESS ALL CORRESPONDENCE TO

Cambridge Crystal Ball
 National Cambridge Collectors, Inc.
 P.O. Box 416
 Cambridge, Ohio 43725

PLEASE NOTIFY US IMMEDIATELY OF ANY CHANGE IN YOUR ADDRESS!

Please enclose a self-addressed stamped envelope when requesting information!!

BOOKS FOR SALE

All of the available reference books relating to Cambridge glass can be ordered directly from the Club.

Address your orders for any of the following to:

BOOKS

National Cambridge Collectors, Inc.
 P.O. Box 416
 Cambridge, Ohio 43725

Please add \$1.00 (P & I) on each book order.
 (Not required for Price List only orders)

Ohio residents please add 5 1/2% State Sales Tax.

 by National Cambridge Collectors, Inc.

1956-1958 CAMBRIDGE GLASS CO. CATALOG REPRINT
 (164 page reprint of original catalog)
 Paperback \$6.95

1949-1953 CAMBRIDGE GLASS CO. CATALOG REPRINT
 (300 page reprint of original catalog)
 Hardbound with Price Guide \$14.95

1930-1934 CAMBRIDGE GLASS CO. CATALOG REPRINT
 (250 page reprint of original catalog)
 Hardbound with Price Guide \$14.95

1978 PRICE GUIDE
 for 1930-1934 catalog reprint \$2.00

 by Mary, Lyle, and Lynn Welker

CAMBRIDGE GLASS CO.
 (120 pages of reprint from 8 old catalogs) \$6.95

CAMBRIDGE GLASS CO. BOOK II
 (119 pages of reprint from old catalogs) \$6.95

CAMBRIDGE, OHIO GLASS IN COLOR II
 (15 color plates w/descriptions and notes) \$5.95

 by Harold and Judy Bennett

THE CAMBRIDGE GLASS BOOK
 (96 pages with 10 color plates) Paperback

1903 CAMBRIDGE GLASS CO. CATALOG REPRINT
 (106 page reprint of an original catalog) \$7.50

 by Charles and Mary Alice Upton

1979 PRICE GUIDE to the CAMBRIDGE GLASS BOOK
 (Prices for each item in Bennett book) \$2.00

NCC Flea Market Planned

NCC will again sponsor a Flea Market in conjunction with the NCC 1982 Annual Convention. It is planned for Saturday, June 26th at the Guernsey County Fairgrounds which are just a short distance from the Convention site at Shenandoah Inn, Old Washington, Ohio.

Arrangements are being handled by Larry Hughes, Flea Market Chairman, who requests that anyone wishing a contract to set up at the Flea Market should contact National Cambridge Collectors, Inc., Box 416, Cambridge, Ohio 43725.

EDITOR'S Reply to Vicki Sansom Letter ...

In a letter from Vicki Sansom which appeared in the December 1981 *Crystal Ball*, she stated that she had enjoyed the #1066 Aurora pictures in the June 1981 issue and that she has several pieces with Mandarin gold bowls and stems. The bowls are optic. She has been unable to find more pieces to match, although she can find other colors with crystal stems, with or without optic bowls. She asked if her pieces are odd.

According to the information I could gather, I would have to answer that your pieces are not odd or special items, Vicki. They were made in the mid 1950's and were part of the regular line. However, few were made, so that makes for difficulty in finding additional pieces now.

You also asked if a lot of Cambridge Glass is shut away in the china closets of original purchasers and not available to collectors yet.

I would assume that is probably true. Much fine glassware was purchased for wedding gifts and other special occasions which were sentimental in nature. Therefore it was treasured, cared for well and passed on to family members as long as possible. Of course, here in the Cambridge area, it often has special meaning to families whose members worked at the Glass Plant. We frequently hear that there are barrels and boxes of glass in basements in this area, but of course, some of this is pure speculation.

Peg

Request From NCC Book Committee

NCC is planning to publish another book to focus on Cambridge colors. The Book Committee has begun to formulate plans and would welcome your suggestions and help. We would be happy to have your ideas on format, and to know what information would be helpful to you.

We would also like to hear from you if you would be willing to loan items to be photographed. We are not far enough along with plans to let you know details of how the photography will be accomplished; however, we are in need of locating items especially in the unusual and hard to find colors such as topaz, carrara, etc. If you have a piece of Cambridge Glass in a hard to find color, or a piece you think might be an asset to this project, please take a moment to write to us. It is another way you can support NCC.

Write to any committee member at the club address: National Cambridge Collectors, Inc., Attn. Color Book Project, Box 416, Cambridge, Ohio 43725. Committee members are: Frank Wollenhaupt, Joy McFadden, Bill Smith and Dave Rankin.

STUDY Club News

STUDY GROUP #7 - EASTERN OHIO "THE CAMBRIDGE BUFFS"

Cambridge Buffs Study Group were hosted to a Christmas Party by Dean and Pauline Westfall on December 12th. Guests were NCC President Willard Kolb and wife, Norma.

A buffet dinner was served by our hosts. Several games were played, one on naming Cambridge colors, and the other a number puzzle based on Cambridge pattern numbers. The games were conducted by Karen Jones, and prizes were won by Charles Upton and Peg Gotschall. The prizes of glass were given by our hosts.

A gift exchange was enjoyed with everyone receiving a piece of Cambridge Glass, and a Mini-Auction was conducted with pieces of glass donated by members. Dale Snode was our Auctioneer and we earned over \$100.

submitted by Deanne Gray

Activity At The Old Cambridge Glass Plant

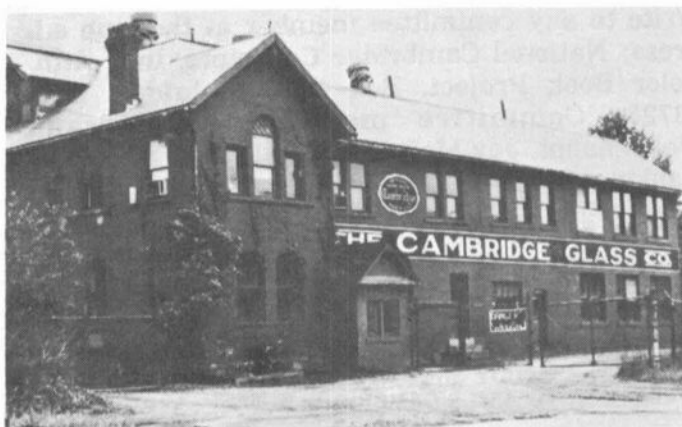
Recently announced by the management of the old Cambridge Glass Plant Facilities were plans to use the building again.

The plant is owned by Mr. Barnett Friedman of Brooklyn, New York, who is founder and owner of the Super Glass Corporation of New York. Super Glass Corporation produces lamps, vases and giftware and in the mid-sixties produced its lamps in Cambridge before operations were moved back to New York. The decorating department was in operation in Cambridge until about a year ago.

Mr. Richard Gallagher, who is manager of the Cambridge Plant Facilities, states that there still is much interest in the old plant by tourists hoping to tour the plant or by individuals calling or writing for pieces of Rosepoint or Caprice. In response to this interest, there are plans to reopen the plant to be used as antique and collectable shops, flea market area, a museum of glass-making artifacts, meeting area and a small glass-making shop for making small amounts of novelty glassware. While taking NCC President Willard Kolb and Secretary Janice Hughes through the plant recently, Mr. Gallagher also discussed possible plans for excavation of the dump and for conducting tours through the plant.

The office building is the first section scheduled to open in March, and it will be used as an antique and collectable mall.

This project is not sponsored or connected in any way with NCC but may be of interest to Cambridge Collectors because of the use of the Cambridge Glass Co. buildings and site.



The office building of the old Cambridge Glass Company as it appears today.

HAVE YOU

OBTAINED A NEW MEMBER?

PUZZLE by Karen Jones

This puzzle uses Cambridge Pattern & Line Numbers

| | | | | | | | | | |
|---|---|---|---|---|---|---|---|---|---|
| 2 | 7 | 5 | 0 | 1 | 8 | 9 | 6 | 7 | 2 |
| 5 | 6 | 2 | 6 | 1 | 0 | 6 | 8 | 8 | 7 |
| 7 | 5 | 3 | 0 | 0 | 1 | 5 | 2 | 5 | 6 |
| 4 | 1 | 8 | 0 | 6 | 0 | 4 | 9 | 0 | 0 |
| 6 | 4 | 1 | 0 | 7 | 8 | 4 | 7 | 1 | 8 |
| 5 | 0 | 5 | 8 | 4 | 1 | 3 | 6 | 2 | 7 |
| 9 | 2 | 6 | 2 | 4 | 1 | 0 | 6 | 6 | 2 |
| 7 | 3 | 2 | 6 | 1 | 0 | 1 | 7 | 9 | 8 |
| 3 | 0 | 1 | 1 | 5 | 7 | 2 | 4 | 9 | 9 |
| 1 | 0 | 4 | 3 | 4 | 5 | 0 | 6 | 8 | 2 |

Cuttings

698 Achilles
 1003 Manor
 1016 Star
 998 Wedding Rose
 925 Maryland
 824 Lucia
 1043 Kimberly
 1058 Maywood
 1059 Ivy
 600 Celestial
 732 Carnation
 942 Belfast
 1068 Granada
 1081 Rondo
 1078 Delhi
 1067 Silver Maple

Etchings

744 Apple Blossom
 748 Lorna
 766 Chintz
 746 Gloria
 725 Diane
 765 Vichy

Near Cut

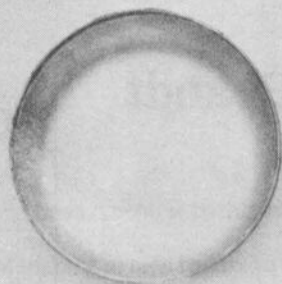
2630 Plymouth
 2750 Colonial
 2892 Semi-Colonial
 2800 Community
 2860 Lexington
 2760 Daisy
 2631 Marjorie
 2699 Buzz Saw
 2660 Wheat Sheaf
 2780 Strawberry
 2651 Feather

Lines

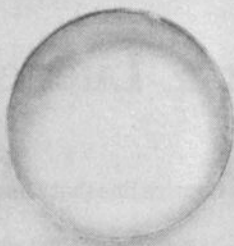
3450 Nautilus
 1402 Tally-Ho
 3500 Gadroon

Stems

3795 Sweetheart
 1066 Aurora
 3011 Nudes



2375. 6 in. Cigar Band Tray.



2374. 5 in. Cigar Band Tray.



Cube Toothpick.
Cut all over.



2960. Toothpick.



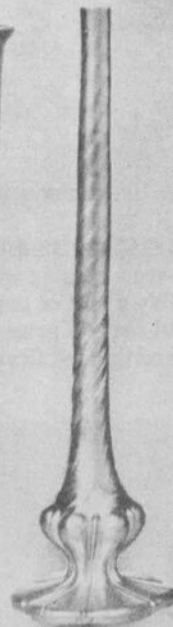
2889. 6 in. Candlestick.



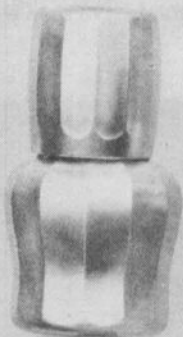
2400
Horseradish
Jar, G/S



2370
Tube Vase.
Made in
10, 12, 14 in. sizes.



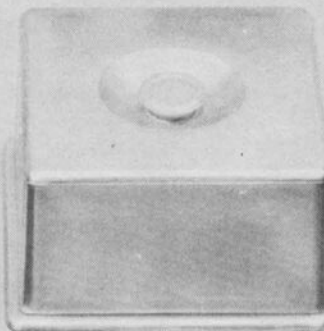
2361. Bud Vase.



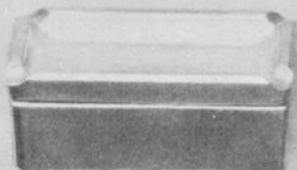
2903
Bed Room Bottle and Tumbler.



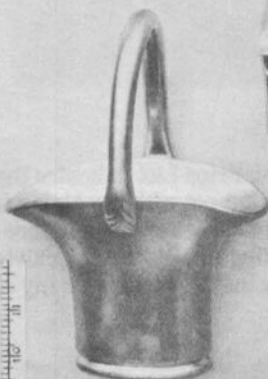
2376
Bed Room Bottle and Tumbler.



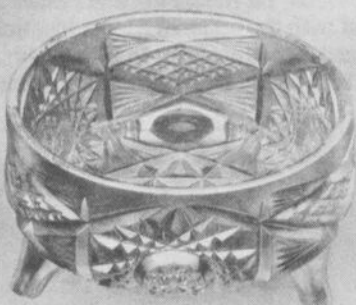
0115. 2 lb. Square Butter Plate and Cover.
For Refrigerator Use.



071. Cigarette Box and Cover.



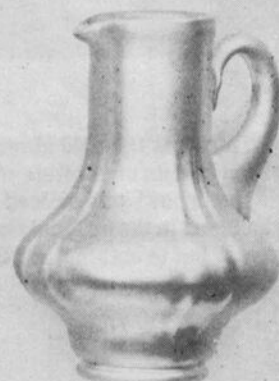
082. Handled Basket.



2895. 7 1/4 in. Fern Dish. No Liner.



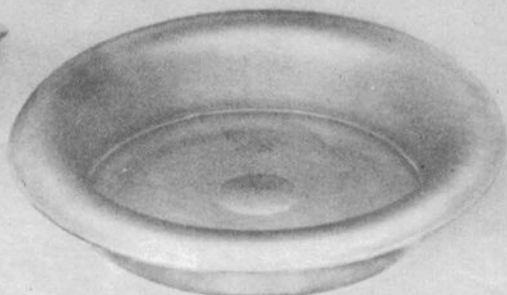
96. 1/2 Gal. Tankard, Optic.
Metal Strainer Top.



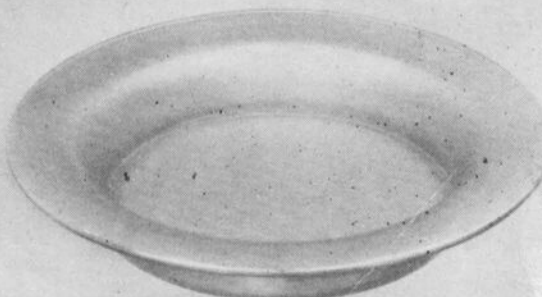
94. Claret Jug.



2881. 6 in. Footed Vase.



093. 11 in. Flower Bowl. Shape No. 3



093. 11 in. Flower Bowl. Shape No. 1

Vertical scale markings on the left side of the page.

NOTES ON CAPRICE #2

by

Mark Nye

Photography by Dick & Luene Brandt

I would like to share some information and pictures of unusual items in the Caprice line that I have acquired or seen recently.

Photo #1 shows the #18, 5" fruit bowl and the #19, 5" crimped fruit bowl in Crystal. Both items were produced also in Moonlight Blue and were available with the optional Alpine finish but to my knowledge they were not made in any other color. The two bowls were probably a part of the Caprice line from the time of introduction until the mid to late 1940s. Neither appears in the 1949 Catalog or any subsequent price lists or catalogs. Seldom does one see either fruit bowl today. This is the first time I have seen the crimped bowl and the first Crystal #18 bowl although I have seen it in Moonlight Blue previously.

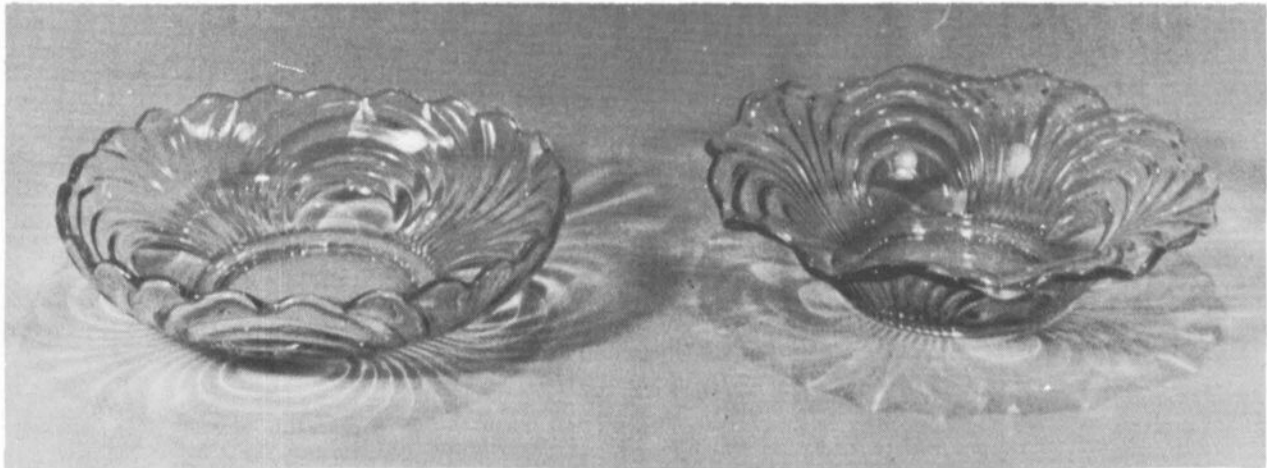


Photo #1

Photo #2 pictures the #300 blown fingerbowl and the #16 pressed fingerbowl, both in Crystal. The 1940 Price List indicates the #300 fingerbowl and its underplate were produced in Moonlight Blue, Mocha, La Rosa Pink and Pistachio but not with the Alpine finish. The #16 fingerbowl was offered in Crystal and Moonlight Blue and with the optional Alpine treatment. These two items were most likely included in the original Caprice offering and were discontinued sometime prior to 1949. Today, fingerbowls are difficult to find in any color but to obtain them in other than Crystal or Moonlight Blue would be fantastic. I have only the two pictured in my collection.



Photo #2

Photo #3 illustrates, left to right, the #341 4¼" vase, the #249 3" blown vase, the #251 4" blown vase and an unlisted vase similar to the #341 except for the top. All are in Crystal. The unlisted vase is a small version of the vase described in my article "Notes On Caprice" published in the November 1980 issue of the Cambridge *Crystal Ball*. According to the January 1940 Price List, the blown vases numbers 249 thru 254 were available only in Moonlight Blue and Crystal without the Alpine finish. The #341 vase is listed as being available in the same colors and with the Alpine finish. I believe the unlisted series of vases were probably also produced in Moonlight Blue.



Photo #3

Photo #4 shows two pieces, both of which are probably one of a kind items or whimsies since these items have not been seen before or do they appear on any listing that has surfaced to date. The item on the right was made from a #165 candy box bottom and has spouts on two opposite sides. These were made by reheating the piece after it came from the mold and pulling out the spouts. Its intended use was most likely as a container for gravy, salad dressing, etc. The second item was made from a pressed, footed tumbler and probably was made to use as a vase. The top has been flared out and there are three large crimps. Both items are in Crystal and are now in my collection.



Photo #4

Photo #5 shows the lamp described in November 1980 article.

While at the 1981 NCC Convention and Antique Show, I was privileged to see several other rare or unusual items in the Caprice line or made from a Caprice piece. One of these is pictured in Photo #6. I believe this item is one of a kind. The stem is the #3011 middle size nude and the top is the Caprice #356 4" bubble ball, both in Crystal. The design in the bubble ball is defective leading me to believe it was a reject. Second, the nude stem also has imperfections or damage at the top where it is highly unlikely damage could occur after the piece was fabricated without breaking the bowl or stem. To knowledge, no similar piece has been reported, the piece has not appeared on any Cambridge listing and lastly, the piece was found in Ohio. All of this leads me to conclude that a worker took two discarded pieces, joined them and took the resulting item home for his family's use and enjoyment.

Also seen at the convention and show was an unlisted rosebowl in Moonlight Blue made from the #165 candy box bottom or a very similar mold. I was unable to obtain measurements but in appearance it resembles the candy box bottom except that the top curves inward to make a smaller opening, most likely to hold a flower frog. I was told by a Cambridge expert that this piece has been seen several times and most likely was a production item. Assuming this is true, it was probably also made in Crystal.

A truly magnificent piece of glass is the #478 Caprice punch bowl which I saw at the NCC Show. It was in Crystal and can best be described by saying it is a large version of the #105 mayonnaise bowl without handles. The punch bowl measures 15" in diameter, holds five quarts and is footed like the mayonnaise bowl. The only known company reference to the punch bowl is in the Supplement to the October 5, 1953 Price List. It is believed that the supplement was printed at about the same time as the October 1953 Price List as it is in the same format except it does not bear page numbers. Production of the punch bowl probably occurred sometime during the period from September 1953 thru the plant closing in June 1954. Since Moonlight Blue was not listed on the October 1953 Price List as a current production color, it can be assumed that the punch bowl was made only in Crystal.



Photo #5

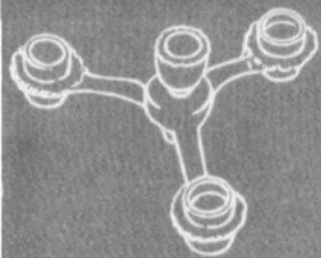


Photo #6

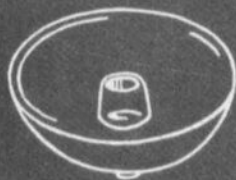
The Caprice nude, small rose bowl and the punch bowl are in private collections and are not offered for sale. Several other rarely seen or unusual Caprice pieces offered for sale at the Antique Show held in conjunction with the 1981 NCC Convention included the #202 cracker jar and cover in Moonlight Blue, a large "cuspidor" in Moonlight Blue, a #31 2 piece cake salver in Crystal, #15 12 ounce flat pressed tumblers in Crystal Alpine, and Crystal #301 cordials and #200 wines.

The Caprice story is far from being complete. As with other Cambridge patterns, it is a never ending source of surprises. In the future I will add another chapter and discuss Caprice vases. In the meantime, I am always eager to hear from anyone with knowledge of unusual Caprice items or related information.

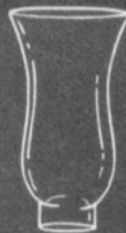




No. 1563 - 4 CANDLE ARM



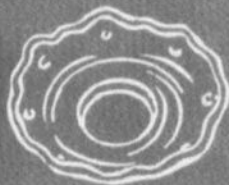
No. 1538
6 IN. PEG NAPPY W/CANDLEWELL



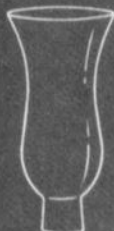
No. 1629 - CHIMNEY FOR
255 HURRICANE LAMP



No. 12 - 1 1/2 IN. PRISM



No. 19 - BOBECHÉ W/PINS (ARMS)



No. 1632 - CHIMNEY FOR
1613 HURRICANE LAMP



No. 1606
6 1/8 IN. CHIMNEY, ETCHED



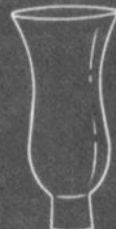
No. 1-X - 2 1/2 IN. PRISM



No. 27 - BOBECHÉ W/PINS



No. 1606 - CHIMNEY FOR
1617 AND 1603 HURRICANE LAMP



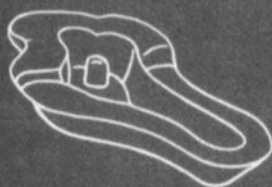
No. 1632
9 1/4 IN. CHIMNEY, ETCHED



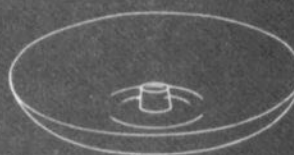
No. 1 - 3 IN. PRISM



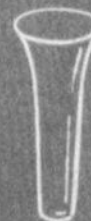
No. 29 - BOBECHÉ W/PINS



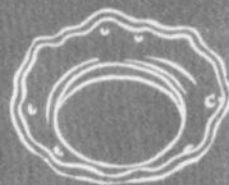
No. 1956/2
10" ASH TRAY WITH PEG



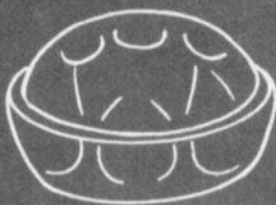
No. P-436 - 13" BOWL W/WELL



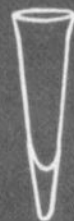
No. 1633 - 5 IN. PEG VASE



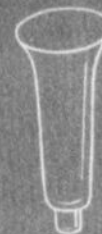
No. 30 - BOBECHÉ W/PINS



No. 1956/3 - VASE BLOCK

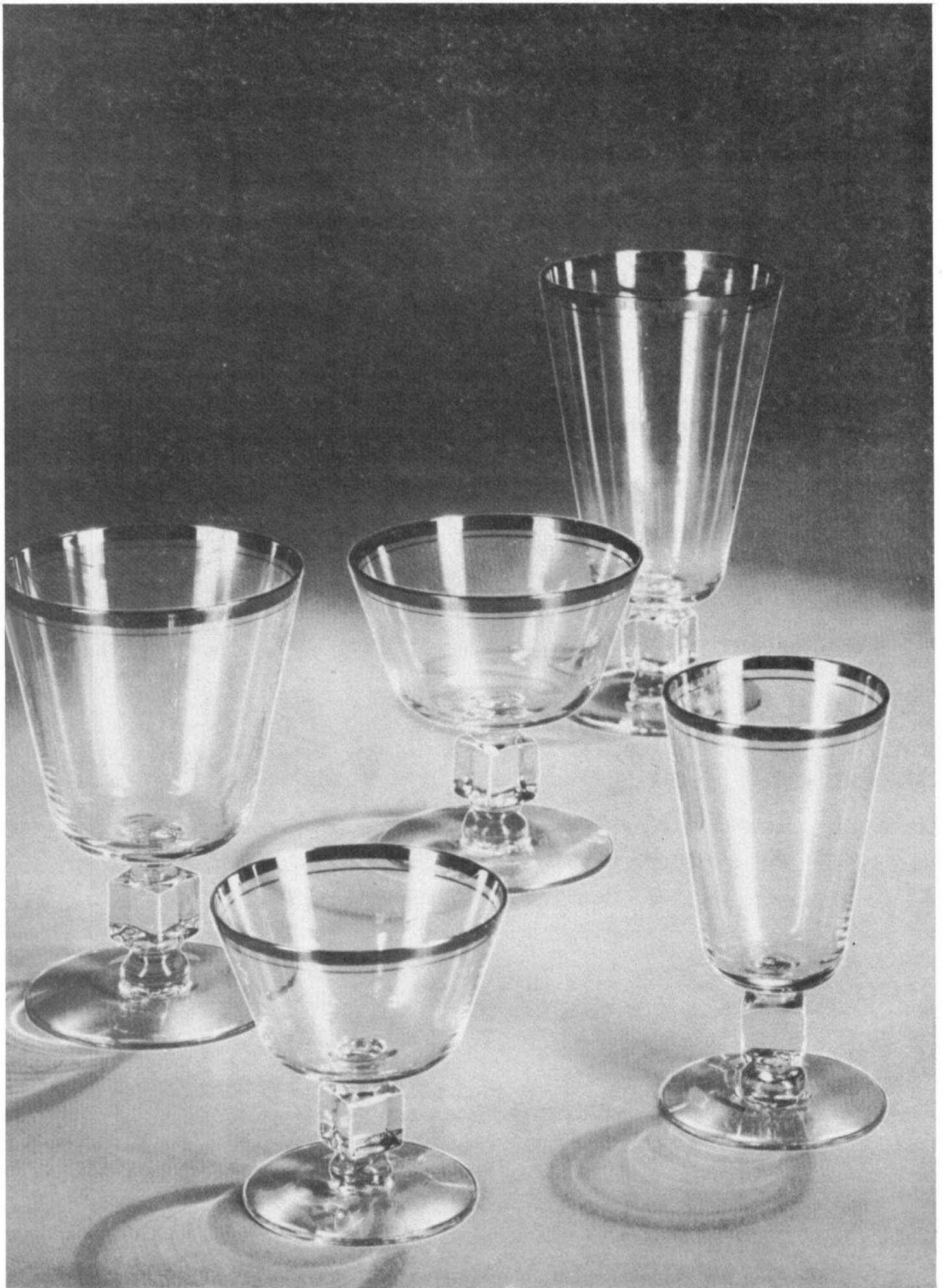


No. 1956/4 - PEG VASE
FOR FLORAL CENTER PIECE



No. 1634 - 7 IN. PEG VASE





Modern

MADE IN CRYSTAL AND PINK

PLATINUM BAND



No. 3791 - SHERBET



No. 3791 - 12 OZ. FTD. TUMBLER



No. 3791 - 5 OZ. FTD. TUMBLER



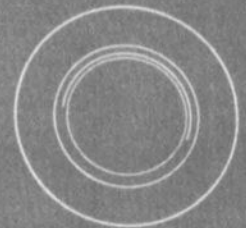
No. 3791 - COCKTAIL



No. 3791 - GOBLET (no stem)



No. 3791 - CLARET



No. 556 - 8 IN. SALAD PLATE

Evelyn M. Allen
135 Cynthia St.
Heath, Ohio 43055
Phone (614) 522-1635

| | | |
|---|-----------|---------|
| 1. No. 300 Crystal caprice goblet | 9...each | \$14.00 |
| 2. No. 300 Crystal caprice 6 oz. tall champagne..... | 12...each | 12.00 |
| 3. No. 300 Crystal caprice 6 oz. low sherbet..... | 6...each | 12.00 |
| 4. Crystal caprice cups and saucers..... | 8...each | 15.00 |
| 5. Royal blue Nude table goblet | | 100.00 |
| 6. Royal blue Nude champagne..... | | 90.00 |
| 7. 7" Royal blue Nude flared comport | | 140.00 |
| 8. 7" Dark green Nude flared comport | | 125.00 |
| 9. 3011/25 Dark green Nude ivy ball | | 135.00 |
| 10. Eagle Book Ends | pair... | 135.00 |
| 11. Scotty Book Ends | pair... | 150.00 |
| 12. Lion Book Ends | pair... | 235.00 |
| 13. Pouter Pigeon Book Ends | pair... | 160.00 |
| 14. No. 509 Pink Two Kid flower figure..... | | 150.00 |
| 15. No. 518 dark amber 8½" flower figure..... | | 150.00 |
| 16. No. 518 light amber 8½" flower figure | | 150.00 |
| 17. No. 518 Moonlight blue 8½" flower figure | | 240.00 |
| 18. No. 3625 10 oz. Chantilly goblet | 7...each | 18.00 |
| 19. No. 184 Moonlight blue caprice tumbler 12 oz..... | 4...each | 30.00 |
| 20. No. 3121 Rosepoint 10 oz. water goblet | 4...each | 25.00 |
| 21. No. 3121 Rosepoint 6 oz. low sherbet..... | 12...each | 21.00 |
| 22. No. 3121 Wildflower 12 oz. ftd. ice tea..... | 7...each | 17.00 |
| 23. 3" Mandarin gold swan, signed | | 28.00 |
| 24. No. 6004 8" crown tuscan flower holder with gold Rosepoint..... | | 85.00 |
| 25. No. 3011/25 Crown Tuscan Nude by ivy ball..... | | 165.00 |

Postage and insurance extra. All items condition considered mint.

STAGE COACH ANTIQUE MALL

(formerly White Pillars Antiques)

7525 East Pike
 Norwich, OH 43767
 614/872-3720

MANY DEALERS

PLENTY OF PARKING

WIDE SELECTION OF GLASS
 AND POTTERY
 FURNITURE AND
 GENERAL LINE!

BUY ----- SELL ----- TRADE

OPEN YEAR ROUND
Weekdays - 10 AM - 5:30 PM
Sunday - 12 noon - 5:30 PM
Summer Evening Hours - by Chancel

Located 9 miles E. of Zanesville, OH, on I-70 to Norwich
 Exit #164 - then 1/2 mile W. on Route 40.

— Classified —

WANTED: CAMBRIDGE ROYAL BLUE - Anything - but love
 Nude Stem items. If you see Cobalt -- think COBALT CAROL
 Markowski, 3141 West Platte Ave., Colorado Springs, CO 80904.

BUYING: CAMBRIDGE ROSEPOINT; Depression Glass; Heisey
 Rose and Orchid; and Fostoria etched dinnerware. Also glass
 figures and unusual pieces. Nadine Pankow, 207 S. Oakwood,
 Willow Springs, IL 60480. Phone: 312. 839-5231.

1982 Convention
&
Antique Show & Sale

June 25, 26, 27, 1982

Shenandoah Inn,
Old Washington, Ohio

COLUMBUS ANTIQUE FLEA MARKET

(ANTIQUES AND COLLECTABLES ONLY)

**OHIO STATE FAIRGROUNDS - LAUSCHE BUILDING
OFF I71 EXIT 17th AVE.**

**COLUMBUS, OHIO
FEB. 28th**

Sunday Only - 6 A.M. To 5 P.M.

Show Admission \$1⁰⁰ - Under 12 Free

150 QUALITY DEALERS

SELLING: Advertising Art Deco, books, Cambridge, clocks, coins, collectibles, depression glass, dolls, Fiesta, fine early furniture, Heisey, jewelry, lamps, oak furniture, postcards, pottery, good primitives, tools.

FOR MORE INFORMATION:

STOCKWELL PROMOTIONS

4214 N. HIGH ST.

COLUMBUS, OHIO 43214

(614) 267-8163 OR 263-6830 OR 885-2352

NEXT SHOWS

**Feb. 28th
May 23rd
June 13th**

**Sept. 19th (Racetrack)
Nov. 21st
Dec. 12th**

A BUYER'S PARADISE

DEALERS



DIRECTORY

NOTE: When writing to the Dealers listed here, please enclose a SASE!

| | | |
|---|--|--|
| <p>EVELYN M. ALLEN 135 Cynthia Street Heath, Ohio 43055 Mail Order & Shows 614-522-1635 SPECIALIZING IN CAMBRIDGE GLASS!</p> | <p>BENICIA ANTIQUE SHOP 305 First Street Benicia, California 94510 OPEN 11 AM - 5 PM Closed Monday Z. E. LOPES 707-745-0978</p> | <p>CHARLES MIKULIK Box 416 Elizabeth, N.J. 07207 — COLLECTOR — Always paying good prices for CAMBRIDGE CAPRICE in all colors 201-688-1144 CARRY MOST TYPES OF ANTIQUES</p> |
| <p>BLACK ROOSTER ANTIQUES 1018 Clark Street Cambridge, Ohio 43725 614-432-3202 M. Sipe CAMBRIDGE GLASS - GENERAL LINE</p> | <p>VISIT HISTORIC BENICIA and its 28 shops Off Interstate #80 North of San Francisco</p> | |
| <p>BERKELEY ANTIQUES 69 Berkeley St. Boston, MA 02116 George or Frank 617-426-1048 CAMBRIDGE, HEISEY, GENERAL LINE</p> | <p>ANDREJCAK'S ANTIQUES 14533 Bayes Ave. Lakewood, Ohio 44107 Joe & Karen Andrejcek 216-226-3417 SHOWS ONLY — CAMBRIDGE — FENTON — CHINA</p> | <p>A. SPRINGBORN 5434 Windridge Lane Orlando, Florida 32810 SHOP No. 34 — WEBSTER, FL Open Every Monday 305/298-3011</p> |
| <p>D & D ANTIQUES Columbus, Ohio DICK SLIFKO SHOWS ONLY</p> | <p>THE HITCHING POST 7467 S. R. 88 Ravenna, OH 44266 Ph. 216-296-3686 D. McDaniel CAMBRIDGE — HEISEY — GENERAL LINE</p> | <p>FINDER'S KEEPER'S ANTIQUES P O Box 303 P O. Box 16023 Dayton, O Columbus, O. 45401 43216 513-254-2937 614-885-2726 SPECIALIZING IN CAMBRIDGE GLASS!</p> |
| <p>THE GLASS CUPBOARD 39 Shire Oaks Drive Pittsford, New York 14534 Marcia Ellis 716-586-7596 CAMBRIDGE ONLY SASE FOR LIST</p> | <p>GEORGE HOFFMAN ANTIQUES 129 South 4th Street Newark, Ohio 43055 614-345-8021</p> | <p>'OUR GLASS ANTIQUES Box 27, Wills Point, Texas 75169 20th CENTURY COLLECTIBLES featuring CAMBRIDGE GLASS! Shows - No Lists - SASE Please PAUL & GINNY HENDERSON 214-873-4190</p> |
| <p>KILPATRICK'S ANTIQUES Lu & Dort 400 W. 6th St., Bloomington, IN 47401 Res. 812/332-8754 Shop 812/339-1120 We buy one piece or collections</p> | <p>S & J GLASS 10629 Main St., Fairfax, VA 22030 Janet & LeRoy Sanders 703/273-8579 BUY & SELL: DEPRESSION, CAMBRIDGE, HEISEY, DUNCAN & FOSTORIA GLASS</p> | <p>1886 HOUSE East Schodack, N.Y. 12063 MAIL and SHOWS Laurie Cruise 518-477-5895 CAMBRIDGE - NORITAKE - AZALEA - D.G.</p> |
| <p>joyce's antiques Bought and Sold Specializing in HEISEY • CAMBRIDGE • VERLYS • AMERICAN GLASS P.O. Box 114, Albertson, N.Y. 11507 (516) 499-3396</p> | <p>ROLLING ACRES ANTIQUES 66484 N. 8th Street Road Cambridge, Ohio 43725 Sandy Jenkins & Anne Ingram 614-432-2570 CAMBRIDGE & GENERAL LINE ANTIQUES</p> | <p>BILL & SHARON PHILLIPS 21730 Priddy Fuchd, Ohio 44123 Ph. 216-261-4665 Shows Only BUYING GLASS, ANTIQUES, ETC.</p> |
| <p>CHARLES A. SHAW Glenwood Gardens - R.V.W.1B Yonkers, NY 10701 AMERICAN GLASS — 914-476-5175 SHOWS & MAIL ORDER!</p> | <p>AL STEELE Westerville, Ohio 614-882-6483 or 614-882-7124 Mail Orders and Shows Only HEISEY — CAMBRIDGE — PATTERN GLASS</p> | <p>SWISS HILLS COLLECTIBLES 303 Guilford Ave., Woodfield, OH 43793 Mary & Wilbur Henderson 614 472-1133 SPECIALIZING IN CAMBRIDGE GLASS Shows, Mail & Stagecoach Antique Mall</p> |
| <p>MARGARET LANE ANTIQUES 2 E. Main St., New Concord, OH 43762 Lynn Welker 614 826-4418 CAMBRIDGE GLASS MATCHING SERVICE Hours Mon.-Fri. 1-5 PM or by Appointment</p> | <p>SHIRLEY S. LAHOUSEUR Antiques and Collectibles Specializing in Cambridge Glass BY APPOINTMENT 7597 Daphne Drive 315-458-5297 No. Syracuse, NY 13212</p> | <p>GREEN ACRES FARM Antiques, Crystal Glass & Collectibles Sat. & Sun. 1-7 PM (614) 927-1882 2678 Hazelton Etna Road (State Route 310 North) Pataskala, Ohio 43062</p> |



National Cambridge Collectors, Inc.

P. O. Box 416, CAMBRIDGE, OHIO 43725

A nonprofit organization dedicated to the preservation and study of Cambridge Glass

You Are Cordially Invited
To Become A Member Of The

NATIONAL CAMBRIDGE COLLECTORS, INC.

Benefits derived from membership include: receipt of our club publication, The Cambridge CRYSTAL BALL; informative Quarterly Meetings; Antique Shows; Auctions; and other special events.

The Cambridge CRYSTAL BALL is published the first of each month. This newsletter contains educational and interesting articles, questions and answers, information on reproductions and reissues, notices of all club functions, classified advertisements, dealers directory, and many other features of interest to collectors of Cambridge Glass.

Yearly dues are \$10.00 for Individual Members and \$3.00 for each Associate Member. All members have voting rights, but only one issue of the CRYSTAL BALL will be mailed per household.

Name (please print) _____ \$10.00

Mailing Address _____

City _____ State _____ Zip _____

Associate Members (Must be at least 12 years of age and living in the same household)

1 Name _____

2 Name _____

3 Name _____

Total number of Associate Members _____ @ \$3.00 each \$ _____

TOTAL AMOUNT ENCLOSED. \$ _____

Please make check payable to NATIONAL CAMBRIDGE COLLECTORS, INC.

Recommended by _____

USE THIS APPLICATION - NCC MEMBERSHIP MAKES A "GREAT GIFT"!

National Cambridge Collectors, Inc.
P. O. Box 416 Cambridge, Ohio 43725

FIRST-CLASS MAIL
U.S. POSTAGE
PAID
Cambridge Ohio
43725
Permit No. 1

FIRST CLASS MAIL

NCC QUARTERLY MEETING

Friday - February 26th - 8:00 PM

with

Program - "Show & Tell" - Auction Preview

(Bring a friend & "Show & Tell" glass)

1982 ALL CAMBRIDGE AUCTION

Saturday - February 27th - 11:00 AM

both events held at:

THE SHENANDOAH INN

P.O. Box 147, Old Washington, Ohio 43768

I-70, Exit 186 - 7 miles E. of Cambridge

Phone 614-489-5511

If you can't attend, be sure
to send mail bids.

See January CRYSTAL BALL for details