

Cambridge



Crystal Ball

ISSUE NO. 132



APRIL 1984

Published monthly by the NATIONAL CAMBRIDGE COLLECTORS, Inc.
To encourage and to report the discovery of the elegant and boundless product
of the Cambridge Glass Company, Cambridge, Ohio

THOUGHTS FROM YOUR PRESIDENT

First of all, we made it through the 1984 ANNUAL AUCTION. It was the most successful ever! We are now looking forward to the 1984 ANNUAL CONVENTION and can only assume that it too will be the most successful ever! It seems, to me at least, that everything this organization does becomes more successful each year.

These accomplishments do not come about because of any certain faction within the organization. They are the result of every member participating . . . be they Officer, Director, Chairperson, Committee Member, or those we mainly depend on . . . our MEMBERS per se!

I was very impressed with the list of members who attended the Annual Auction and the distances they traveled in order to be there. They came from Massachusetts, New York, Michigan, Texas, Georgia, South Carolina and from all over Ohio. The mail bids from those of you who couldn't attend, but wanted to get in on a piece of the action, were overwhelming. Add to this the organization of the Auction by Chairman Lynn Welker and his committee, the expertise of Craig Connelly our very talented auctioneer, and . . . oh yes, the consignors who made all of this glass available, and you have true success!

(I think I'll write Ronnie a letter while I'm in the mood, and explain to him that you have to have good people surrounding you, and citizens who are willing to participate in organizational decisions in order for that organization to be successful! I doubt that he would want to take the advice of someone who is making more money at being President than he is. . . . If he has a successor, I'll remember to write to him also!)

There was an article in last months CRYSTAL BALL asking for volunteers for this years Convention. Pay heed! You will have a lot of fun if you become involved. There is a lot of work involved in presenting the Convention each year. We have always had ample volunteers to handle each segment of the Convention, but we want to get YOU involved so that you can feel you are a part of the total organization. Make plans NOW to attend and volunteer a portion of your time to help with the various projects.

There will be a Display Room again this year. Please loan the Display Committee that piece of glass that some member wants to see, learn about, or just plain wish they had!

Cup Plates! Third in the series, TEAL BLUE, are now available. Your order blanks were in last months issue on the last page. You needn't cut up your CRYSTAL BALL in order to use the order form. Just send your \$7 for each plate (plus \$.42 ea. sales tax if you live in Ohio) and \$1 each for postage (no postage necessary if you want to pick them up at the

MEMBERSHIP RENEWAL NOTICE

If the date on your
address label is - -

4 - 84

This is your LAST ISSUE of the CRYSTAL BALL.

Please renew NOW!

continued on page 11

CAMBRIDGE CRYSTAL BALL

Official publication of National Cambridge Collectors, Inc., a non-profit corporation with tax exempt status. Published once a month for the benefit of its members.

Membership is available for individual members at \$13 per year and additional members (12 years of age and residing in the same household) at \$3 each. All members have voting rights, but only one *Crystal Ball* will be mailed per household.

Back issues of the *Crystal Ball* are available (beginning with Issue No. 1, May 1973) for members only. Cost: \$.60 each or 12 issues for \$7.

1983-84 OFFICERS & COMMITTEE CHAIRPERSONS

PRESIDENT Willard Kolb
 VICE-PRESIDENT Josephine Barstow
 SECRETARY Janice Hughes
 TREASURER William Smith
 SERGEANT-AT-ARMS Don Armbricht

BUDGET & FINANCE David Rankin
 BY-LAWS David Rankin
 CONVENTION Josephine Barstow
 MEMBERSHIP Phyllis Smith
 MUSEUM Billy Harbaugh
 PROGRAM & ENTERTAINMENT Frank Wollenhaupt
 PROJECT Willard Kolb
 PUBLIC RELATIONS William Smith
 PUBLICITY Joseph Andreicak
 STUDY GROUP ADVISOR Evelyn Allen

1984 AUCTION Lynn Welker
 1984 ANTIQUE SHOW Joy McFadden

CRYSTAL BALL EDITOR Phyllis Smith

CLASSIFIED ADVERTISING RATES

5c per word \$1.00 minimum
 We cannot mix type size in classified advertisements. Abbreviations and initials will count as words. Payment in full MUST accompany all ads.

DISPLAY ADVERTISING RATES

	Members	Non-Members
1/8 page	\$ 4.00	\$ 6.00
1/4 page	7.00	10.00
1/2 page	12.00	18.00
3/4 page	17.00	25.00
Full page	22.00	33.00

DEALERS DIRECTORY

1" ad (5 line maximum) \$6.00 for 6 months

Cambridge *Crystal Ball* assumes no responsibility for items advertised and will not be responsible for error in price, description or other information.

Advertising copy, articles, and club news and notices must be in our hands by the 10th of each month to assure publication in our next issue. Advertisements containing reproductions will not knowingly be accepted unless clearly stated.

Opinions or information stated in any signed article or letter printed in the *Crystal Ball* are those of the writer only and may or may not agree with National Cambridge Collectors, Inc. The editor reserves the right to refuse or edit material submitted for publication to conform to the editorial style of the *Crystal Ball*.

PLEASE ADDRESS ALL CORRESPONDENCE TO
 National Cambridge Collectors, Inc.
 P.O. Box 416
 Cambridge, Ohio 43725

PRESIDENT: Willard Kolb 614/695-0695
 SECRETARY: Janice Hughes 614/432-7823
 EDITOR: Phyllis Smith 513/323-3888

PLEASE NOTIFY US IMMEDIATELY OF ANY CHANGE IN YOUR ADDRESS!

Please enclose a self-addressed stamped envelope when requesting information!!

Cambridge Sonata ...the Oval Line!

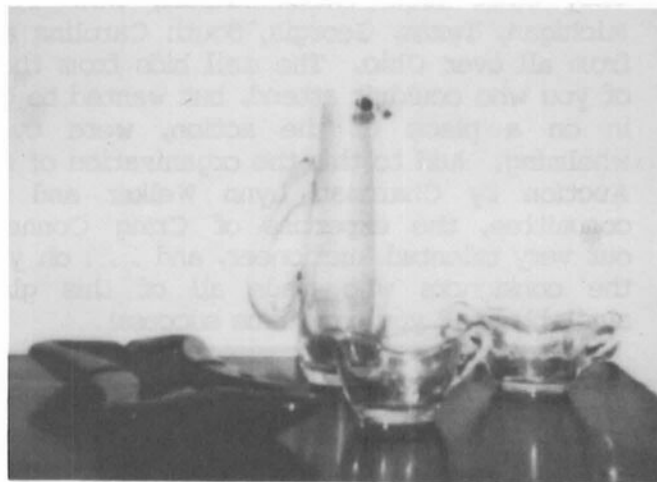
by PHYLLIS SMITH

The Cambridge Glass Company purchased full page advertisements in both the December 1956 and February 1957 issues of "China, Glass and Lamps" in order to proclaim the merits of their elegant new line of glassware. They called this lovely new creation their **Sonata** (#1957) line.

As I was in the process of researching the small amount of information we have concerning this line, I could not help but wonder if indeed there were any among you who would even be interested in what I might be able to tell you about this little known Cambridge pattern. But, because I am interested in the unusual when it comes to collecting Cambridge glass, perhaps you will join with me in "looking at" this lovely pattern that has been before us for a long time. It has virtually been "over-looked" on our way to collecting such items as: Rose Point; Caprice; Swans; Nudes; etc.

This oval shaped pattern is really quite pretty, and hopefully, after this lesson we will all go out and find at least one piece to add to our collection. Please let me hear from you when you do!

As you can see by the photo, Bill and I have been fortunate in finding a few pieces of Sonata to add to our personal collection. We feel that the most unusual piece is the Martini Swirler. It's the strange looking pitcher with the upside-down handle. Believe it or not, the handle is very comfortable to



SONATA continued

use and not the least bit awkward as you might suspect. The cream and sugar have the Rock Crystal Engraving "Radiant Rose" on one side only.

The ash tray is smoke in color (they were produced in crystal also). The 1958 price list describes it as the "#1957/6 12" Ash Tray (Executive) in white gift box, cut and polished top," and the price was \$144 per dozen or \$12 each (for either crystal or smoke). This was the highest priced item in the entire twenty-six item line. The Martini Swirler was only \$60 per dozen or \$5 each.

Most of the Sonata line was available in crystal only. Exceptions to this were the ash tray in smoke, and the S121 1-lite candlestick and the S100 10" oval bowl in carmen. A pair of these carmen candlesticks will be shown in the new Color Book being published by NCC. They are also shown in the September 1977 issue (#53) of the CRYSTAL BALL. The price list indicates that pieces in carmen were always a bit higher in price than those in crystal or other colors. The candlesticks were listed at \$2.75 each in crystal and \$3.25 in carmen, and the bowl was \$5 in crystal and \$7.50 in carmen.

As I mentioned before, the R.C. Engraving "Radiant Rose" was used on several pieces of this pattern. Besides the sugar and cream, you can find it on such items as the 15" torte plate, salt and pepper, 10" oval bowl, celery, footed comport, and the oil. Other engravings used on pieces of Sonata were "Anniversary," "Charm," and "Spring." There may be others, but these are the only ones we find in our reference material.

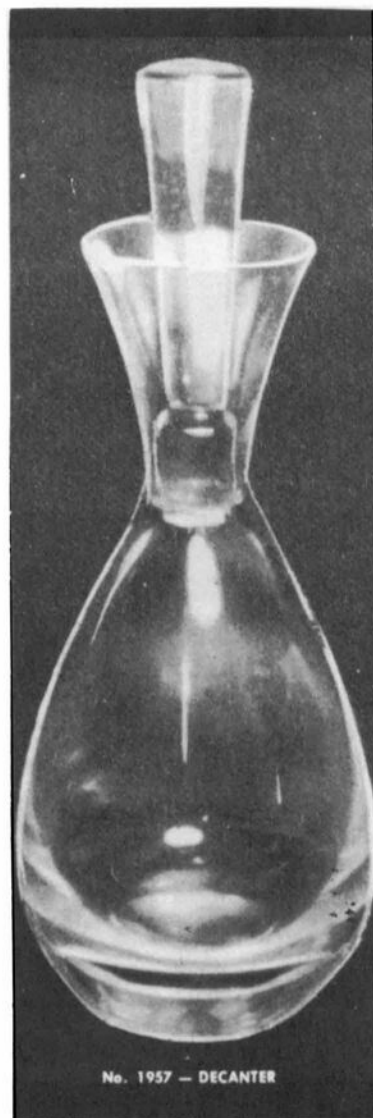
A Platinum decoration was used on several pieces of Sonata and was called D/Silver Leaves. The footed comport, salt and pepper, cream and sugar, oil, 10" oval bowl, and celery were the items listed in the 1958 price list as having this Platinum decoration.

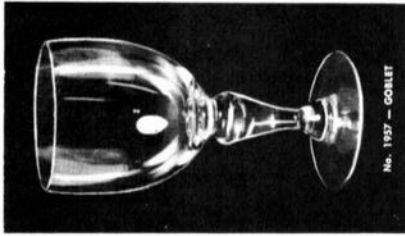
Other pieces produced in this Sonata line and not previously mentioned were the stemware items which included the goblet, sherbet, low sherbet, cocktail, claret or 5 oz. juice, wine, 14 oz. footed ice tea, and cordial. Additional items were the 8 1/2" oval salad plate, 7" oval bowl, oval cup and saucer, 10" dinner plate, 2-lite candlestick (one of these can be seen in the NCC MUSEUM), 6" bonbon, 7" handled

sauce boat, decanter, and two handled baskets of slightly different shape.

(NOTE: Most of these items may be seen on page 4 of this issue, and in the NCC 1956-58 Catalog Reprint, pages 36 & 37, or in the CRYSTAL BALL Issues #76 & #77.)

Sonata was evidently produced until the second closing of the plant in 1958, but even so, that was only for a period of less than two years. It is little wonder that few pieces are being found today. I have a feeling that this pattern is much like the Cambridge Square pattern . . . in that the families who purchased it are still using it, and therefore the majority has not yet found it's way to the garage sales, flea markets, etc. Hopefully it will be available one day soon. At least now we have a better chance of recognizing Sonata when we do see it, as being yet another part of the Cambridge story!



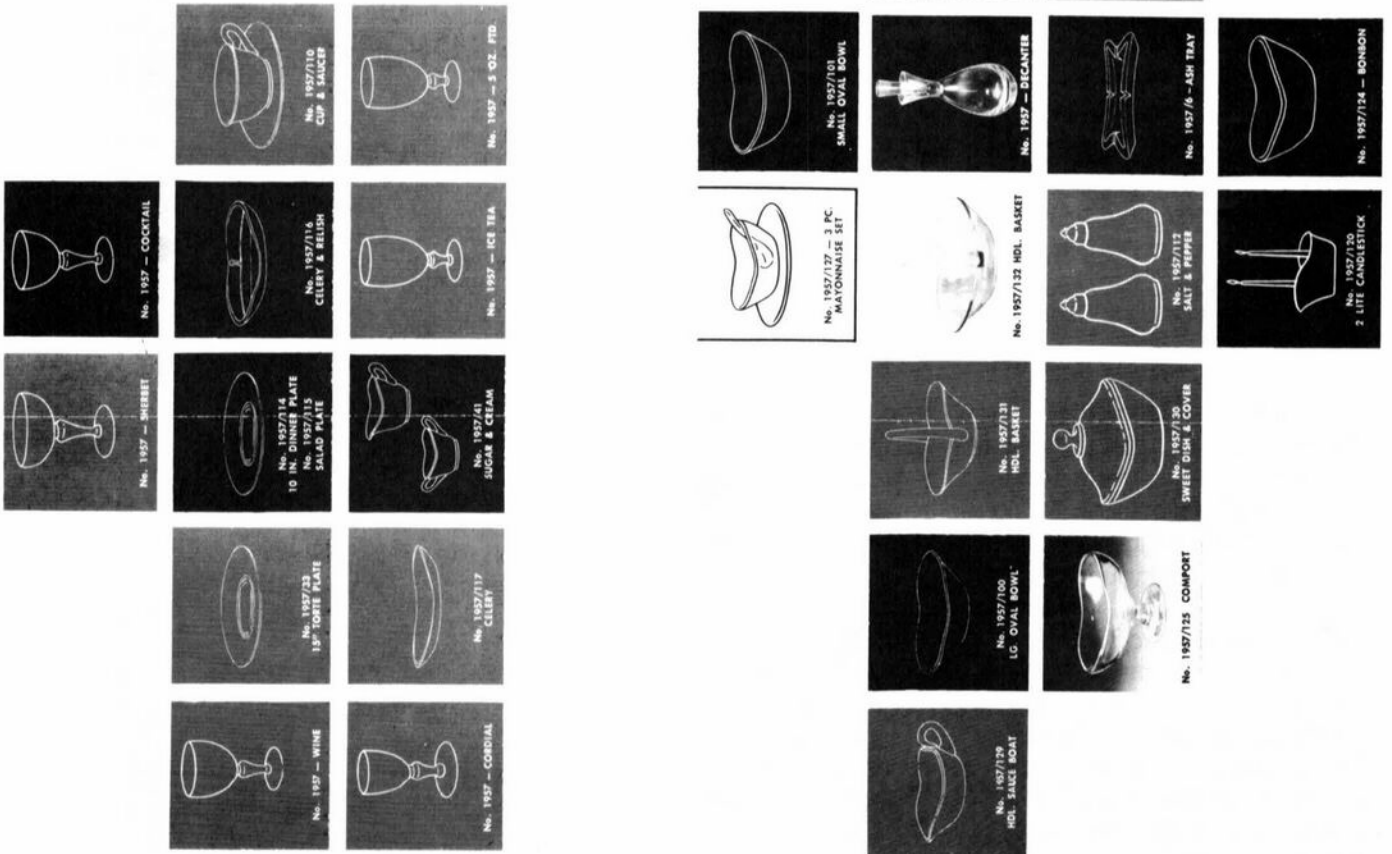


No. 1957 - GOBLET



Like the sound of sweet music, Sonata (The Oval Line) by Cambridge lends a background of quiet elegance to any table setting. This graceful glassware has a distinctly modern oval design which not only creates the feeling of a rhapsody in motion, but brings a new respect for unusual taste of the hostess whose treasure it is. Sonata glassware makes a gift that will be highly prized, and one that will remain the final touch of beauty for a lifetime.

Companions to the graceful modern beauty of Sonata Glassware, are many striking decorative pieces which are pictured in this grouping. Each of these unique and attractive units are designed in the distinctive Sonata oval shape so that they create the high harmony of a brilliant choral arrangement when used in combination with one another. Lucky, indeed, the woman whose prized possessions include selections from the Sonata group by Cambridge... the name known for excellence in fine homes everywhere.



auction report

The 1984 All-Cambridge Glass Auction is now history, but it should be reported that it was the best Auction (profitwise) we have ever had. The results are listed on page 10 and if you care to add up all the dollars, you will see that the total amount exceeds fifteen thousand. Profit for the MUSEUM fund will be 20%, less expenses. So you can see, it is definitely worth all the work involved.

A total of 329 lots were sold in approximately five hours (allowing twenty minutes for lunch break). That is a little better than one a minute, so you know things moved along at a fast pace. Almost all flaws were noted in advance, so there was very little return for resale. This in itself helped things to move rapidly. Auction Chairman Lynn Welker and his committee are to be commended on their beforehand organization that made for smooth operation during the sale.

Craig Connelly, our Auctioneer, did his usual grand job of persuading our buyers to bid top dollar. He has the knack of making you feel good about bidding . . . even if you happen to pay a little more than you had intended. You know you've gotten a good deal when all is said and done, because after all, the profits do all go for the MUSEUM.

To prove that it is still possible to get a bargain, I would like to mention that willow blue Decagon cream soup saucers sold for \$1 each and a Yardley Jar with original plastic lid went home with someone for \$2. Of course, someone else was willing to pay \$20 for the same type Yardley Jar with an original glass lid. As you study the list of results, you will see that there were many bargains.



Several outstanding and hard to find pieces were included in this sale and one of these was the Monkey Lamp. Unfortunately it had a crack about 2" long in the front of it, but even so it still brought \$550. The luncheon set in crown tuscan went reasonably at \$350, as did the carmen #3011 table goblet at \$105, the Doulton pitcher etched Portia at \$135, and the moonlight blue 8 1/2" draped lady figure flower holder at \$210. I could go on and on, but why spoil all the fun for you.

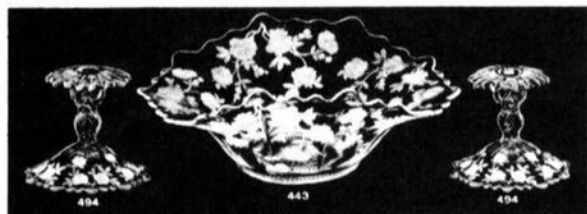
continued on page 11

BLOSSOM TIME

by MARK NYE

The January 1940 Cambridge Glass Company catalog and price list included listings for eight plate etchings. They were Blossom Time, Candlelight, Chantilly, Diane, Elaine, Portia, Rose Point and Wildflower. Of these, Blossom Time is less frequently seen than any of the others.

It is an attractive etching composed, as the name implies, of flowers. Why it never achieved the popularity reached by other Cambridge etchings remains unknown. Perhaps it was overshadowed by Wildflower, another floral etching somewhat similar in nature, which was already established in the Cambridge line prior to the introduction of Blossom Time.

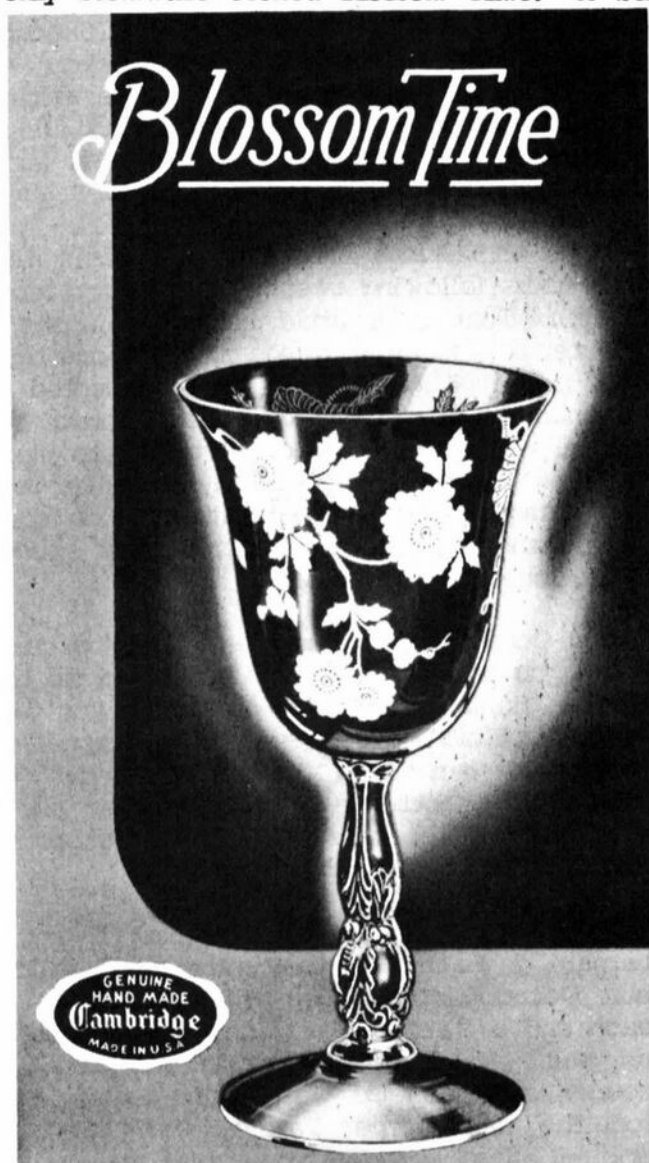


Blossom Time first became available during the last half of 1938 or very early in 1939. The first known references to the etching are dated early 1939 and one, "Crockery and Glass Journal" of February 1939, includes the word "new." A reference to the introduction of the Martha line punch bowl in late January 1939 has been found and it included availability of the punch bowl with the Blossom Time etching.

The next reference for Blossom Time is the January 1940 Cambridge Glass Company catalog in which thirteen pages were devoted to illustrating the etching. The last known reference to the etching was found in an ad appearing in the June 1942 issue of "Ladies Home Journal." No doubt production continued for sometime after that date, but Blossom Time was discontinued prior to 1949 since no mention of the etching is found in the Cambridge company catalog issued that year or in subsequent price lists and catalogs.

Blossom Time is not known in color except for gold encrustation on ebony pieces. The Welkers, in their Book I of catalog page reprints, included two pages that show ebony items available with D/1059 - gold encrusted Blossom Time.

From the 1940 catalog and price list we learn Blossom Time was made in a complete dinnerware line utilizing Martha blanks, including 9 1/2" and 10 1/2" dinner plates. (Cambridge referred to the latter as service plates, not dinner plates.) Complimenting the dinnerware was #3675 stemware which appears to be the only stemware etched Blossom Time. A bell



made from a #3700 goblet and etched Blossom Time appeared in a supplement to the 1940 catalog, but no listing for the actual stemware with this etching has yet been found.

Accompanying the dinnerware line was a full range of serving, accessory and decorative items. These include bowls, plates, relish plates, candlesticks and vases. The blanks used were primarily from the Martha line, but other blanks were also used to a limited extent.

The Martha line of blanks did not include oil bottles and shakers. Thus we find the Blossom

Time line includes two styles of shakers from the #3400 line, #3400/76 and #3400/77. The oil bottle used for this etching is also from the #3400 line, #3400/161 6 oz. with ground stopper.

Several other items from the #3400 line were also etched Blossom Time. These include: two jugs, #3400/38 and #3400/152; two tumblers, #3400/38 and #3400/115; the #3400/175 cocktail shaker with #10 top; the #3400/92 32 oz. decanter and 2 1/2 oz. tumbler; and the #3400/119 12 oz. cordial decanter or bottle accompanied by the #3400/1341 cordial tumbler.

Two hurricane lamps were included in the Blossom Time line, #1601 with only the chimney etched and #1603 with only the base etched.

For the candy box collector the Martha #311 candy box and cover was etched Blossom Time, as were the #3600/3 tall candy box and cover and the #3600/4 low candy box and

cover. Butter dish collectors take notice, there is also a Blossom Time butter dish, the #506 covered butter dish.

The Martha line punch bowl, with a capacity of 10 quarts, utilized the ladle from the Tally-Ho line. Those of you fortunate enough to have a Blossom Time punch bowl, this is the ladle you need to complete the set. There are 5 oz. punch cups and an underplate 18" in diameter, both from the Martha line, that round out the complete punch set, and these too were etched Blossom Time.

The 1940 price list also contained listings for Decoration D/1058 - Etched Blossom Time - Gold Edge, and Decoration D/1059, Etched Blossom Time - Gold encrusted, both on crystal blanks. These listings included the #3675 stemware, two sizes of salad plates, many accessory or serving pieces, vases, candlesticks, the #3600/4 low candy box and cover, and three jugs. The punch bowl, however, was not listed as having been made with either of these gold decorations.



Pictures taken from Cambridge Glass Company Pamphlet circa early 1940s.

Club News

National Cambridge Collectors, Inc.
Quarterly Meeting
February 24, 1984
Shenandoah Inn, Old Washington, OH

The meeting was called to order at 8:15 p.m. by President Kolb. In attendance were five Board members and sixty-three Club members and guests from six states.

The Minutes of the November 5, 1983 meeting were read by Janice Hughes and approved.

The Treasurers report was given by Bill Smith showing the Operating Equity as of December 31, 1983 to be \$14,519.37 and the Museum Equity \$95,607.95.

COMMITTEE REPORTS

BY-LAWS: No report.

CONVENTION: Chairman Jo Barstow reported Lynn Welker and Frank Wollenhaupt will present a slide presentation on etchings for the Banquet program. Volunteers are needed for several committees. Information regarding this will be in the March CRYSTAL BALL.

CRYSTAL BALL: Editor Phyllis Smith reported the March issue is at the printer. She would like ideas for future articles. Ads in the CRYSTAL BALL have the cheapest rates and get results.

MEMBERSHIP: Chairman Phyllis Smith reported we now have 1234 members. She also reported Mr. Eugene Henn, former Convention Speaker and employee of the Cambridge Glass Company is in a convalescent home.

PROJECTS: Chairman Willard Kolb reported the new Cup Plate will be made soon in Teal Blue. Some crystal and blue plates are still available.

PUBLICITY: No report.

BUDGET & FINANCE: No report.

MUSEUM: Chairman Bill Harbaugh reported the MUSEUM will open March 1, Wednesday through Sunday, noon to 4 p.m. He also reported the interior of the MUSEUM was cleaned by Jo Barstow, Marybelle Moorehead and Janice Hughes. Larry Hughes and Willard Kolb did all the electrical work.

President Kolb thanked the women for washing all the glass in the MUSEUM. He also stated since the new addition was completed under the original estimate the dry wall, insulation and drop ceiling was done. The exterior painting and landscaping will be done this Spring. He thanked all the members for the donations this past year which made the addition possible.

COLOR BOOK: Bill Smith reported the book is completed and is at the printer. Delivery has been promised to be no later than Convention. It will consist of 128 pages, 60 color plates, will be hardbound and contains 1319 pieces of glass. It will sell for \$19.95 plus postage and will include a Price Guide.

FLEA MARKET: Chairman Larry Hughes reported two buildings are reserved and half of one has been rented to date. There will be no tear downs until 2 p.m. The local React Club will be doing the concessions.

ANTIQUe SHOW: Bill Smith reported for Chairman Joy McFadden that almost all the spaces are reserved at this time.

PUBLIC RELATIONS: Chairman Bill Smith reported they were at the Antique Show in Columbus on February 17 and 18, will be at the Western Reserve Show in Cleveland on March 17 and 18, and the Rocky Mountain Depression Glass Show in Denver, Colorado on April 27, 28 and 29.

OLD BUSINESS: President Kolb asked if anyone has not received a tax receipt and letter for donations this past year to let him know. If anyone donates glass to the MUSEUM please enclose a list of the glass and name and address.

NEW BUSINESS: Chairman Bill Smith reported nominees for the Board of Directors are as follows:

Joe Andrejczak, Lakewood, OH
Mrs. John (Karen) Boyd, Cambridge, OH
Bill Harbaugh, Senecaville, OH
D. D. Rummel, Bellville, OH

President Kolb announced the floor open for nominations. Jo Barstow nominated Marybelle Moorehead. President Kolb closed the nominations.

President Kolb stated several letters have been received regarding the Auction date.

continued on next page

Several comments were made. The Board of Directors will consider this at the next meeting.

Sue Smith from Sylvania, Ohio won the door prize. The "Show & Tell" and program on Auction Glass was presented by Lynn Welker.

Janice Hughes reported that the local Post Office was vandalized the early part of December and mail has been missing from then and two weekends in January.

A motion was made by Bill Smith to adjourn at 9:20 p.m.

Janice Y. Hughes, Secretary

Study Club News

STUDY GROUP #5 - SOUTHERN CALIFORNIA "CALIFORNIA CAMBRIDGE COLLECTORS"

We spent a lovely summer-like day in February at the home of Bill and Betty Losch for this month's meeting. Bill showed the NCC slides on Stemware and Beverley Hanson brought some stemware from her collection so we could compare the "real thing" with the slides. There were eight members present.

Betty Losch treated us to a delicious sit-down dinner after we viewed the slides. We then had our raffle. The prize was a rock crystal open candy dish won by Herb Wanser.

We shared our latest finds which consisted of the following brought by Beverley: Rosepoint covered marmalade; pink Cleo etched sugar; Chintz etched mayonnaise bowl; emerald green Cleo etched Decagon candlestick; and a pair of frosted emerald green triple candlesticks.

Bill and Betty Losch found an amber frosted Rose Lady flower holder at a local show and Ron Rockafellow again had some very special finds. Included was a mandarin gold vase with crystal keyhole base, Rosepoint double relish, four goblets and four sherbets in royal blue with crystal nude lady stems, and a 3" mandarin gold swan.

Betty Wanser shared an amethyst ball decanter and cordial glasses and the four various colored ash trays on the wooden spool type base. My contribution to "Show & Tell" was a 10" Cascade mandarin gold vase.

March meeting will be at Beverley Hanson's.
submitted by Joan McDowell

STUDY GROUP #6 - NEW YORK STATE "THE FINGERLAKES"

Our February meeting was held at the home of Don and Shirley Ladouceur on February 12th, with six members present.

Under the able direction of Bob Ellis, the group experimented with the "Black Light." We placed about forty pieces of glass under the light. Beautiful green "fluoresce" color appeared using emerald green, ivory, Eleanor blue, and also some pieces of glass (emerald green) made by another company. Moonlight blue became deeper in color, and others appeared to have no effect. The group thoroughly enjoyed the project.

March meeting will be at Sandra O'Donnell's. Project will be NCC slides on Candlesticks.
submitted by Shirley Ladouceur

STUDY GROUP #7 - EASTERN OHIO "THE CAMBRIDGE BUFFS"

Study Group meeting was held February 17th in the home of Roy and Doris Isaacs.

Twenty pieces of Cambridge Glass were placed in tie bags and we were to identify the stem, pattern and color of each piece. (Editor's Note: Sure sounds like the kind of game I would enjoy playing!)

"Show & Tell" pieces were: 3-lite blue frosted candlesticks; green Tulip water glass; Portia etched pink wine; royal blue footed ice tea; oyster plate; amber Everglade sherbet; Feather Near Cut plate; #1402 tall sherbet with black and red enamel; cordials in Tahoe blue, amethyst, pink with stradivarius stem.

A "Mini-Auction" was held by Charles Upton. There were twelve members present. March meeting will be held at Lena Barnes.
submitted by Deanne Gray

CENTRAL TEXAS STUDY GROUP INTEREST EXPRESSED

Cambridge Collectors of Central Texas: let's get together. Contact Barbara Stock, Route #3, Box 66R, Lockhart, TX 78644.

1984 AUCTION RESULTS

1.	\$ 7.00	65A	Bell from Rose	129.	14.00	193.	27.50	258.	230.00
2.	8.00		Point Tumbler	130.	75.00	194.	20.00	259.	36.00
3.	15.00		30.00		not Feather	194A	12.50 Amber	260.	157.50
4.	15.00	65B	Same as 65A	131.	40.00		NCC Paperwgt	261.	20.00
5.	45.00		30.00	132.	25.00	194B	12.50 Blue	262.	30.00
6.	40.00	66.	25.00	133.	30.00		NCC Paperwgt	263.	155.00
7.	28.00	67.	54.00	134.	10.00 ea. X 9	195.	17.50	264.	25.00
8.	17.00	68.	55.00		5.00 ea. X 2	196.	37.50	265.	15.00
9.	9.00	69.	60.00	135.	10.00 ea. X 7	197.	57.50	266.	33.00
10.	12.00	70.	35.00		3.00 ea. X 1	198.	15.00	267.	45.00
11.	20.00	71.	70.00	136.	110.00	199.	20.00	268.	27.50
12.	3.00	72.	45.00	137.	6.00	200.	15.00	269.	192.50
13.	15.00	73.	45.00	138&9.	8.00 1 crk	201.	5.00	270.	200.00
14.	5.00	74.	130.00	140.	16.00	202.	47.50	271.	40.00
15.	21.00	75.	130.00	141.	15.00	203.	27.50	272.	40.00 Cleo
16.	12.50	76.	165.00	142.	22.50	204.	8.00	273.	135.00
17.	24.00	77.	100.00	143.	60.00	205.	90.00	274.	30.00 ground
18.	6.00	78.	195.00	144.	10.00	206.	24.00	275.	50.00
19.	37.50	79.	75.00	145.	40.00	207.	30.00	276.	45.00
20.	120.00	80.	25.00	146.	15.00	208.	3.00	277.	148.00
21.	48.00	81.	20.00	147.	130.00	209.	8.00 Qty.2	278.	80.00
22.	72.00	82.	35.00	148.	210.00	210.	12.00 Lo Shbt.	279.	64.00
23.	85.00	83.	9.00	149.	80.00	211.	18.00	280.	55.00
24.	105.00	84.	20.00	150.	25.00	212.	35.00	281.	35.00
25.	75.00	85.	25.00	151.	30.00	213.	40.00	282.	30.00
26.	9.00	86.	32.50	152.	35.00	214.	30.00	283.	27.00
27.	70.00	87.	40.00	153.	30.00	215.	17.50	284.	49.00
28.	65.00	88.	20.00	154.	80.00	216.	17.50	285.	15.00
29.	25.00 12 oz.	89.	2.00	155.	40.00	217.	37.50	286.	40.00
29A	27.50	90.	12.50	156.	25.00	218.	5.00	287.	22.50
	Peachblo	91.	40.00	157.	75.00 ea. X 1	219.	4.00	288.	35.00
29B	15.00 Moonlt.	92.	15.00		62.50 ea. X 3	220.	37.50	289.	18.00
30.	15.00 Qty.1	93.	Did not sell	158.	7.00	221.	20.00	290.	30.00
31.	56.00 Qty.7	94.	15.00	159.	30.00	222.	77.50	291.	45.00
32.	13.00	95.	35.00	160.	45.00	223.	37.50	292.	30.00
33.	49.00	96.	20.00	161.	130.00	224.	135.00	293.	40.00
34.	21.00	97.	20.00	162.	32.00	225.	135.00	294.	20.00
35.	18.00	98.	20.00	163.	55.00	226.	45.00	295.	15.00
36.	40.00	99.	30.00	164.	4.00	227.	15.00	296.	15.00
37.	50.00	100.	150.00	165.	16.00	228.	37.50	297.	20.00
38.	55.00	101.	92.50	166.	25.00	229.	40.00	298.	22.00
39.	15.00	102.	190.00	167.	12.50	230.	32.50	299.	80.00
40.	35.00	103.	45.00	168.	27.50	231.	12.50	300.	7.50
41.	32.50	104.	65.00	169.	30.00	232.	25.00	301.	25.00
42.	35.00	105.	22.50	170.	22.50	233.	35.00	302.	40.00
43.	15.00	106.	25.00	171.	20.00	234.	70.00	303.	25.00
44.	Not Shell base	107.	75.00	172.	15.00	235.	170.00 Bruised	304.	15.00
	70.00	108.	210.00	173.	10.00	236.	120.00	305.	4.00
45.	15.00	109.	22.50	174.	20.00 Diane	237.	120.00 signed	306&7	12.50
46.	45.00	110.	55.00	175.	25.00	238.	550.00	308.	12.50
47.	95.00	111.	145.00 Missing	176.	32.50 ea. X 1	239.	60.00	309.	5.00
48.	32.50		7 Prisms		30.00 ea. X 2	240.	60.00	310.	6.00
49.	42.50	112.	40.00		22.50 ea. X 1	241.	55.00	311.	5.00
50.	35.00	113.	8.00	177.	20.00	242.	45.00	312.	17.50
51.	115.00	114.	13.00	178.	37.50	243.	65.00	313.	5.00
52.	27.50	115.	20.00	179.	15.00 each	244.	50.00	314.	8.00
53.	22.50	116.	17.50	180.	17.50	245.	350.00	315.	7.00
54.	32.50	117.	55.00	181.	15.00	246.	20.00	316.	8.00
55.	85.00	118.	55.00	182.	36.00	247.	5.00	317.	9.00
56.	100.00	119.	35.00	183.	85.00	248.	50.00	318.	7.00
57.	75.00	120.	15.00	184.	100.00	249.	32.00	319.	11.00
58.	45.00	121.	10.00	185.	70.00	250.	38.00	320.	17.50
59.	17.50 each	122.	55.00	186.	110.00 Brandy	251.	12.50	321.	2.00 Lt.Em.
60.	27.50	123.	55.00	187.	40.00	252.	24.00	322.	8.00
61.	15.00	124.	35.00	188.	220.00	253.	6.00	323.	3.00 Cr.Soup
62.	30.00	125.	8.00	189.	75.00	254.	17.50		Liners.
63.	45.00	126.	8.00	190.	22.00	255.	12.50	324.	7.00 10"
64.	40.00	127.	24.00	191.	35.00	256.	15.00		Cntr Hndl Sevr,
65.	55.00	128.	12.00	192.	37.00	257.	45.00		Lt. Emerald

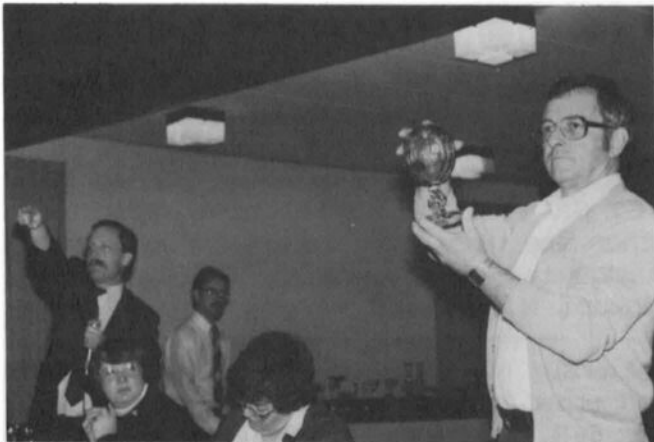
MEMBERSHIP CONTEST IN FULL SWING!

Our Membership Contest has two full months to run and everyone still has an opportunity to win. So far no one is way out ahead, so it is possible for YOU to get busy, recommend some NEW MEMBERS, and be the winner.

The Prize for recommending the most NEW MEMBERS for the 1983-84 year is - one complete Convention Registration, paid in full! You have until June 1st to send them in. If you are in need of Membership Applications let us know - or just send their name and address on a plain sheet of paper and "recommended by (your name)" along with check for \$13 first member and \$3 for each associate. Send to: N.C.C., Inc., P.O. Box 416, Cambridge, OH 43725.

Good Luck to everyone and THANKS for your help in this worthwhile contest.

Phyllis Smith, Membership Chairman



L to R: Craig Connelly, Vicki Wollenhaupt, Lynn Welker, Joy McFadden, Willard Kolb

THOUGHTS continued from page 1

Book Sales table during Convention), along with your name and address, to: N.C.C., Inc., P.O. Box 416, Cambridge, OH 43725. . . . There are still a few left in Crystal and Cobalt Blue at the same price as the Teal Blue . . . so hurry in your orders SOON!

These Cup Plates are cute little items. They make nice little gifts, and don't forget, ALL PROCEEDS go to the MUSEUM Fund!

WILLARD

AUCTION REPORT. . . continued from page 5

All in all, it was an outstanding experience and if you weren't among the hundred and fifty or more in attendance you missed a lot of fun. Hopefully you can make plans to attend next year.

A very nice article telling about our 1984 Auction appeared in the February edition of the "Collectors' Marketplace," a monthly guide to the Ohio Antique & Collectible Market. They will be featuring Cambridge and surrounding area shops, shows, auctions, etc., as well as the NCC Convention and Antique Show in their June issue. If you would like a FREE sample of their next issue, you may receive it by sending your name and address to: Collectors' Marketplace, 5270 Waterloo Road, Dept. CB, Atwater, OH 44201.

PLEASE NOTE: Item #324 on the list of Auction Results was not listed in the original Auction Catalog. It was found in the bottom of a box and we have no idea where or who it came from. As shown, it was a light emerald green 10" center handled server. If the person who consigned it will contact Lynn Welker, it will be greatly appreciated. If no one claims ownership then the full amount of sale will go into the MUSEUM Fund.

COMPLETE CONVENTION INFORMATION WILL BE IN THE MAY C.B.

Your Advance Registration Form for the 1984 Convention will be included in your May issue of the CRYSTAL BALL. Be sure you fill it out promptly and return it before the deadline.

So many advance preparations must be made that the earlier you return you registration, the easier it will be for the Registration Committee to complete their work. Name tags must be made and they take a lot of time and work. Please help by sending your registration in early! THANKS SO VERY MUCH!

VISIT YOUR MUSEUM of CAMBRIDGE GLASS

BOOKS FOR SALE

All of the available reference books relating to Cambridge Glass can be ordered directly from the Club.

Address your orders for any of the following to:

BOOKS

National Cambridge Collectors, Inc.
P.O. Box 416
Cambridge, Ohio 43725

Please add \$1.00 (P & I) on each book order.
(Not required for Price List only orders)

Ohio residents please add 6% State Sales Tax.

by National Cambridge Collectors, Inc.

1956-1958 CAMBRIDGE GLASS CO. CATALOG REPRINT
(164 page reprint of original catalog)
Paperback \$6.95

1949-1953 CAMBRIDGE GLASS CO. CATALOG REPRINT
(300 page reprint of original catalog)
Hardbound with 1983 Price Guide \$14.95

1930-1934 CAMBRIDGE GLASS CO. CATALOG REPRINT
(250 page reprint of original catalog)
Hardbound with 1982 Price Guide \$14.95

1983 PRICE GUIDE
for 1949-53 catalog reprint \$2.25 PP

1982 PRICE GUIDE
for 1930-34 catalog reprint \$2.25 PP

by Mary, Lyle, and Lynn Welker

CAMBRIDGE GLASS CO.
(120 pages of reprint from 8 old catalogs) \$6.95

CAMBRIDGE GLASS CO. BOOK II
(119 pages of reprint from old catalogs) \$6.95

CAMBRIDGE, OHIO GLASS IN COLOR II
(15 color plates w/descriptions and notes) \$5.95

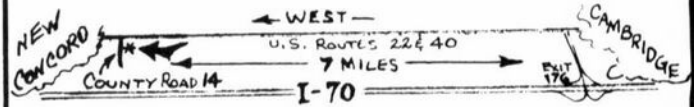
by Harold and Judy Bennett

1903 CAMBRIDGE GLASS CO. CATALOG REPRINT
(106 page reprint of an original catalog) \$7.50

MAGICAL UNICORN ANTIQUES

ROUTE #2 NEW CONCORD, OH 43762
(614) 826-7140

LARGE SELECTION OF CAMBRIDGE
GLASS - QUILTS - PRIMITIVES
Also Carry New Collectibles



Open by chance or
appointment! ANYTIME
to accommodate dealers
and travelers.



Owner: Yvonne L. Gordon

— Classified —

BUYING: CAPRICE Moonlight or Rosepoint by Cambridge; Rose or Orchid by Heisey; and American, June, Fairfax, Versailles, Trojan, etc. by Fostoria. **Nadine Pankow**, 207 South Oakwood, Willow Springs, IL 60480. 312/839-5231

FOR SALE: CAMBRIDGE GLASS, Caprice, Moonlight Blue. Large collection. For information phone: **Mrs. Elsie Ahrend**, 201/251-2164, Spotswood, NJ 08884.

FOR SALE: CAMBRIDGE, Heisey, Duncan and other fine glass. Send SASE for list. **M & J Antiques**, c/o Sir Speedy, 431 Main Street, Woburn, MA 01801.

WANTED: CAMBRIDGE Square stems (#3798) and other pieces. **Barbara Stock**, Route #3, Box 66R, Lockhart, TX 78644.

WANTED TO BUY: SCALLOPED top vase, 7" high, 2 5/8" across top, and 5/8" bottom, to fit Cambridge candelabra #2355. Please quote price to: **Mrs. Alfred Knight**, 24 Popponeset Road, Cotuit, MA 02635.

FOR SALE: CAMBRIDGE collection, mostly Wildflower etching. Stems, basket, jug, cups and saucers, sugar and cream, salad plates, etc. SASE during April to: **Virginia Dutcher**, P.O. Box 4814, Ocala, FL 32678-4814.

"Time is like money; the less of it we have
to spare, the further we make it go."
H. W. SHAW

MORGANTOWN
IMPERIAL
HALL
DEPRESSION GLASS
TIFFIN
CAMBRIDGE
FOSTORIA
HEISEY

TIFFANY
CARNIVAL
DRESDEN
MIESSEN
WEDGEWOOD
CRYSTAL
BAUER
ROSEVILLE

THE
**SAN FRANCISCO
DEPRESSION ERA**

**GLASS
CHINA & POTTERY
SHOW & SALE**

(EAST COAST DEALERS EXHIBITING)

SAT APRIL 7th, 1984 10am.-5pm.

SUN APRIL 8th, 1984 10am.-5pm.

AT
THE HALL OF FLOWERS

GALLERY

9TH AVE & LINCOLN WAY
INSIDE GOLDEN GATE PARK

Admission \$2.50
(\$2.00 WITH THIS TICKET)

For Information Contact
"UP TO PARR"
588 Guerrero Street
San Francisco, CA 94110
(415) 552-9337

REFERENCE BOOKS AND A WHOLE LOT MORE
GOOD FOOD

NATIONAL CAMBRIDGE COLLECTORS

FLEA MARKET

SATURDAY, JUNE 23rd

6 A.M. to 5 P.M.

DEALERS MUST REMAIN SET UP UNTIL 2 P.M.

GUERNSEY COUNTY FAIRGROUNDS

OLD WASHINGTON, OHIO

(one mile East of I-70, Exit #186; on Old U.S. 40)

DEALER SPACE AVIALABLE

For information or Contract write: Larry Hughes, Chrm., P.O. Box 416, Cambridge, OH 43725

STAGE COACH ANTIQUE MALL

(formerly White Pillars Antiques)

7525 East Pike
Norwich, OH 43767
614/872-3720

MANY DEALERS. . .

PLENTY OF PARKING. . .

WIDE SELECTION OF GLASS
AND POTTERY
FURNITURE AND
GENERAL LINE!

BUY and SELL

OPEN YEAR ROUND
Weekdays - 10 AM - 5:30 PM
Sunday - 12 noon - 5:30 PM
Summer Evening Hours - by Chance!

Located 9 miles E. of Zanesville, OH, on I-70 to Nor-
wich Exit No. 164 - then ¼ mile W. on Route 40.

ARRAY OF COLOR
TENTH ANNUAL SHOW + SALE
FEATURING: Bill + Phyllis Smith

APRIL 27-28-29

FRI 10-9 • SAT 10-6 • SUN 12-5

ROCKY MOUNTAIN
**DEPRESSION
GLASS SOCIETY**

NORTHGLENN MALL
i-25 & 104TH AVE.
DENVER

paul shaw • 303 430 9771

DEALERS



DIRECTORY

NOTE: When writing to the Dealers listed here, please enclose a SASE!

<p>EVELYN M. ALLEN 135 Cynthia Street Heath, Ohio 43055 Mail Order & Shows 614-522-1635 SPECIALIZING IN CAMBRIDGE GLASS!</p>	<p>BENICIA ANTIQUE SHOP 305 First Street Benicia, California 94510 OPEN 11 AM - 5 PM Closed Monday Z. E. LOPES 707-745-0978 VISIT HISTORIC BENICIA and its 28 shops Off Interstate #80 North of San Francisco</p>	<p>CHARLES MIKULIK Box 416 Elizabeth, N.J. 07207 — COLLECTOR — Always paying good prices for CAMBRIDGE CAPRICE in all colors 201-688-1144 CARRY MOST TYPES OF ANTIQUES</p>
<p>BLUE BONNET SHOPPE at The Main Place 102 West Mistletoe at Main San Antonio, TX 78212.....512/736-4900 Antiques, Crystal, Collectibles! Open 7 days!</p>	<p>ANDREJCAK'S ANTIQUES 14533 Bayes Ave. Lakewood, Ohio 44107 Joe & Karen Andrejcek 216-226-3417 SHOWS ONLY — CAMBRIDGE — FENTON — CHINA</p>	<p>GLASS RAINBOW of California P.O. Box 127, Elk Grove, CA 95624 Neil & Ervina McCartney Hours: 9am-4pm & 7-9pm 916/685-5485 BY APPOINTMENTS & SHOWS!</p>
<p>BERKELEY ANTIQUES 69 Berkeley St. Boston, MA 02116 George or Frank 617-426-1048 CAMBRIDGE, HEISEY, GENERAL LINE</p>	<p>THE HITCHING POST 7467 S. R. 88 Ravenna, OH 44266 Ph. 216-296-3686 D. McDaniel CAMBRIDGE — HEISEY — GENERAL LINE</p>	<p>FINDER'S KEEPER'S ANTIQUES P.O. Box 303 Dayton, O. 45401 513-254-2937 P.O. Box 16023 Columbus, O. 43216 614-885-2726 SPECIALIZING IN CAMBRIDGE GLASS!</p>
<p>D & D ANTIQUES Columbus, Ohio DICK SLIFKO SHOWS ONLY</p>	<p>GEORGE HOFFMAN ANTIQUES 129 South 4th Street Newark, Ohio 43055 614-345-8021</p>	<p><i>YOU CAN ADVERTISE YOUR ANTIQUE SHOP HERE!</i> 1 inch - \$6 for six months</p>
<p>THE GLASS CUPBOARD 39 Shire Oaks Drive Pittsford, New York 14534 Marcia Ellis 716-586-7596 CAMBRIDGE ONLY INQUIRIES INVITED</p>	<p>J & L GLASS Laws Antique Center, Manassas, VA 22111 and 10629 Main St. Fairfax, VA 22030 703/273-8579 BUY & SELL Depression, Cambridge, Heisey, Duncan & Fostoria Glass</p>	<p>1886 HOUSE East Schodack, N.Y. 12063 MAIL and SHOWS Laurie Cruise 518-477-5895 CAMBRIDGE - NORITAKE - AZALEA - D.G.</p>
<p>THE ANTIQUERY 42 E. Main St., St. Rt. 40 New Concord, Ohio 43762 Ph. 614-432-4483 Richard Bennett <i>Specializing in Cambridge Glass</i></p>	<p>PLATE MATES 3904 Cleveland Place Metairie, LA 70003 Kathryne L. Creamer 504/887-0631 BUY or SELL — DISCONTINUED CHINA & CRYSTAL</p>	<p>ROLLING ACRES ANTIQUES 501 S. 9th St. Cambridge, Ohio 43725 Sandy Jenkins & Anne Ingram 614-432-2570 CAMBRIDGE & GENERAL LINE ANTIQUES</p>
<p>joyce's antiques Bought and Sold Specializing in HEISEY • CAMBRIDGE • VERLYS • AMERICAN GLASS P O Box 114 Albertson N Y 11507 (516) 499-3396</p>	<p>AL STEELE Westerville, Ohio 614-882-6483 or 614-882-7124 Mail Orders and Shows Only HEISEY — CAMBRIDGE — PATTERN GLASS</p>	<p>BETTY'S ICE HOUSE ANTIQUES 517 Fulton Street Wausau, Wisconsin 54401 Quality Antiques Cambridge - Heisey - General Line Betty R. Puestow Hours 1-5 Daily 715-848-7145 or by appointment</p>
<p><i>YOU CAN ADVERTISE YOUR ANTIQUE SHOP HERE!</i> 1 inch - \$6 for six months</p>	<p>SHIRLEY S. LADOUCEUR Antiques and Collectibles Specializing in Cambridge Glass BY APPOINTMENT 7597 Daphne Drive 315-458-5297 No. Syracuse, NY 13212</p>	<p>GREEN ACRES FARM Antiques, Crystal Glass & Collectibles Sat. & Sun. 1-7 PM (614) 927-1882 2678 Hazelton Etna Road (State Route 310 North) Pataskala, Ohio 43062</p>
<p>MARGARET LANE ANTIQUES 2 E. Main St., New Concord, OH 43762 Lynn Welker 614/826-4418 CAMBRIDGE GLASS MATCHING SERVICE Hours Mon.-Fri. 1-5 PM or by Appointment</p>		



National Cambridge Collectors, Inc.

P. O. Box 416, Cambridge, Ohio 43725

The National Cambridge Collectors, Inc. is proud to present an original film produced by the Cambridge Glass Co. in the 1950's. The film is entitled THE CRYSTAL LADY. It is a most interesting film and includes pictures of the factory and the workers making the fine Cambridge Glass. It is a 16mm sound movie that runs about 40 minutes.

The following 5 slide presentations are now available:

No. 1 is on the Display rooms and close-up shots of particular pieces of interest.

No. 2 is of different stems made by Cambridge Glass Co.

No. 3 covers Cambridge Glass candlesticks.

No. 4 is of Cambridge colors.

No. 5 presents Cambridge Glass figurals.

These 5 presentations are available in Kodak carousel slide trays and are supplied with narratives on each slide.

NOTE: NCC Study Clubs may use these presentations free of charge except for postage to and from destination.

TO RESERVE PLEASE CHECK THE ITEM (OR ITEMS) DESIRED.

MAKE CHECK PAYABLE TO: NATIONAL CAMBRIDGE COLLECTORS, INC.

THE CRYSTAL LADY and all 5 slide presentations have a deposit fee of \$25 and a rental fee of \$15 which will be deducted from the deposit fee.

THE CRYSTAL LADY

No. 1 Display rooms and particular pieces

No. 2 Stems

No. 3 Candlesticks

No. 4 Colors

No. 5 Figurals

TOTAL DEPOSIT FEE:

NAME OF ORGANIZATION:

ADDRESS:

CITY & STATE:

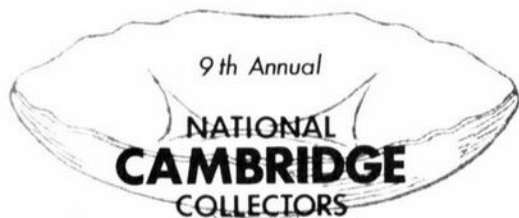
ZIP

DATE NEEDED:

FIRST-CLASS MAIL
U.S. POSTAGE
PAID
So. Vienna, Ohio
45369
Permit No. 15

National Cambridge Collectors, Inc.
P. O. Box 416 Cambridge, Ohio 43725

FIRST CLASS MAIL



9th Annual

NATIONAL
CAMBRIDGE
COLLECTORS

ANTIQUÉ SHOW & SALE

(& 11th Annual NCC Convention)

SHENANDOAH INN

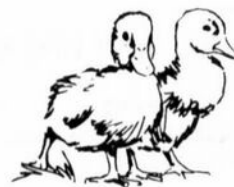
INTERSTATE 70 · EXIT 186 · 7 MILES EAST OF
CAMBRIDGE, OHIO

JUNE 22, 23, 24, 1984

HOURS	
FRIDAY, JUNE 22nd	6:00 - 9:00
(PREVIEW COMMISSION \$3.50)	
SATURDAY, JUNE 23rd	11:00 - 6:00
SUNDAY, JUNE 24th	12:00 - 5:00
(ADMISSION \$1.75)	

OFFERING CAMBRIDGE AND OTHER FINE GLASSWARE
ALONG WITH A GENERAL LINE OF ANTIQUES

FOOD DOOR PRIZES PARKING



Easter