

Cambridge



Crystal Ball

ISSUE NO. 134

JUNE 1984

Published monthly by the NATIONAL CAMBRIDGE COLLECTORS, Inc.
To encourage and to report the discovery of the elegant and boundless product
of the Cambridge Glass Company, Cambridge, Ohio

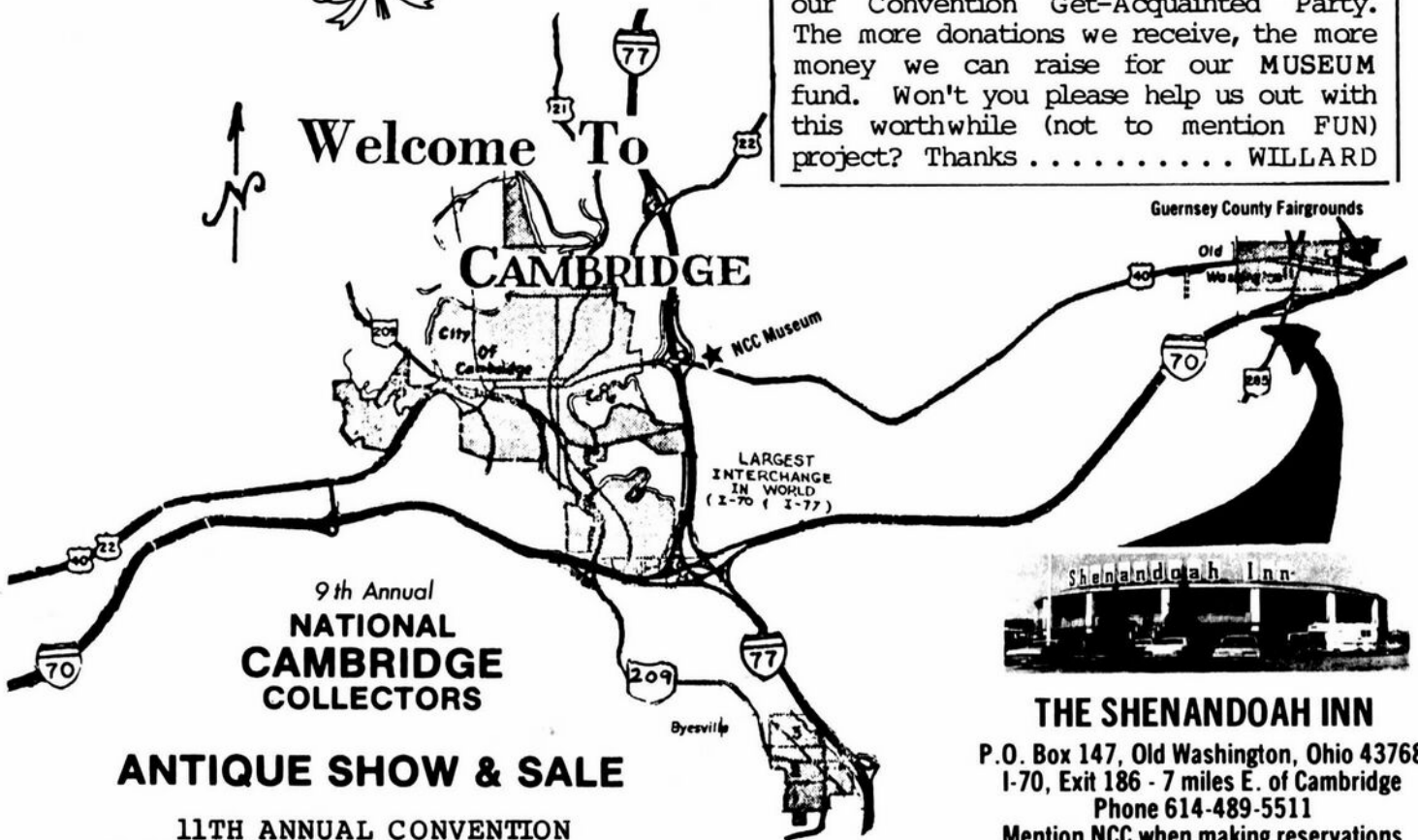
NOTICE

REMINDER: Please don't forget to bring your donation of one or several items we can use for our "Mini-Auction" to be conducted on Friday evening as a part of our Convention Get-Acquainted Party. The more donations we receive, the more money we can raise for our MUSEUM fund. Won't you please help us out with this worthwhile (not to mention FUN) project? Thanks WILLARD



Welcome To

CAMBRIDGE



9th Annual
**NATIONAL
CAMBRIDGE
COLLECTORS**

ANTIQUE SHOW & SALE

11TH ANNUAL CONVENTION

MEMBERSHIP RENEWAL NOTICE

If the date on your address label is - - **6 - 84**
This is your **LAST ISSUE** of the
CRYSTAL BALL. Please renew NOW!



THE SHENANDOAH INN

P.O. Box 147, Old Washington, Ohio 43768
I-70, Exit 186 - 7 miles E. of Cambridge
Phone 614-489-5511
Mention NCC when making reservations

JUNE 22, 23, 24, 1984

MAKE PLANS TO ATTEND ALL
NCC CONVENTION FUNCTIONS!

CAMBRIDGE CRYSTAL BALL

Official publication of National Cambridge Collectors, Inc., a non-profit corporation with tax exempt status. Published once a month for the benefit of its members.

Membership is available for individual members at \$13 per year and additional members (12 years of age and residing in the same household) at \$3 each. All members have voting rights, but only one *Crystal Ball* will be mailed per household.

Back issues of the *Crystal Ball* are available (beginning with Issue No. 1, May 1973) for members only. Cost: \$.60 each or 12 issues for \$7.

1983-84 OFFICERS & COMMITTEE CHAIRPERSONS

PRESIDENT	Willard Kolb
VICE-PRESIDENT	Josephine Barstow
SECRETARY	Janice Hughes
TREASURER	William Smith
SERGEANT-AT-ARMS	Don Armbrrecht
BUDGET & FINANCE	David Rankin
BY-LAWS	David Rankin
CONVENTION	Josephine Barstow
MEMBERSHIP	Phyllis Smith
MUSEUM	Billy Harbaugh
PROGRAM & ENTERTAINMENT	Frank Wollenhaupt
PROJECT	Willard Kolb
PUBLIC RELATIONS	William Smith
PUBLICITY	Joseph Andrejcek
STUDY GROUP ADVISOR	Evelyn Allen
1984 AUCTION	Lynn Welker
1984 ANTIQUE SHOW	Joy McFadden
CRYSTAL BALL EDITOR	Phyllis Smith

CLASSIFIED ADVERTISING RATES

5c per word \$1.00 minimum
 We cannot mix type size in classified advertisements. Abbreviations and initials will count as words. Payment in full MUST accompany all ads.

DISPLAY ADVERTISING RATES

	Members	Non-Members
1/8 page	\$ 4.00	\$ 6.00
1/4 page	7.00	10.00
1/2 page	12.00	18.00
3/4 page	17.00	25.00
Full page	22.00	33.00

DEALERS DIRECTORY

1" ad (5 line maximum) \$6.00 for 6 months

Cambridge *Crystal Ball* assumes no responsibility for items advertised and will not be responsible for error in price, description or other information.

Advertising copy, articles, and club news and notices must be in our hands by the 10th of each month to assure publication in our next issue. Advertisements containing reproductions will not knowingly be accepted unless clearly stated.

Opinions or information stated in any signed article or letter printed in the *Crystal Ball* are those of the writer only and may or may not agree with National Cambridge Collectors, Inc. The editor reserves the right to refuse or edit material submitted for publication to conform to the editorial style of the *Crystal Ball*.

PLEASE ADDRESS ALL CORRESPONDENCE TO
 National Cambridge Collectors, Inc.
 P.O. Box 416
 Cambridge, Ohio 43725

PRESIDENT: Willard Kolb 614/695-0695
 SECRETARY: Janice Hughes 614/432-7823
 EDITOR: Phyllis Smith 513/323-3888

PLEASE NOTIFY US IMMEDIATELY OF ANY CHANGE IN YOUR ADDRESS!

Please enclose a self-addressed stamped envelope when requesting information!!

"THOUGHTS"

from President WILLARD KOLB

I think that the first thing on the agenda today will be the CONVENTION REGISTRATION DEADLINE. DON'T FORGET . . . the deadline is JUNE 10th. Your Registration must be postmarked by this date. You only have 10 days or less from the time you read this to mail your registration form and get in on all the fun.

I know it is difficult for some of you to make plans even a week in advance, but this is a necessity so that final counts and arrangements can be made with the Shenandoah Inn. Your registration form was in the May issue of your CRYSTAL BALL. If you have misplaced it or the dog has chewed it up, call Janice Hughes or me immediately and we will tell you what amount you should send to cover the functions you wish to attend.

The other DEADLINE to remember is JUNE 15th. That is the latest date you can send in your Ballots to elect new members to the Board of Directors. Your ballots were also conveniently placed next to your Registration form in the May issue. Good! Now, if only I can remember to do all of this myself!

There were a lot of registrations made during the first week of May and I think this is a good indication that we will have another year of record attendance for our Convention. Usually registration is a little slow at that time.

We need to do a lot of cleanup work at the MUSEUM. The weather hasn't been too cooperative thus far on weekends, and we may have to work in rainsuits to get everything ready before Convention.

The Antique Show is filled and I'm sure there will be some fine pieces that you will just have to take home with you.

We need glass for the Display room. There is still time to help by bringing some of your pieces to display. The colors needed are, amethyst, helio, violet and heatherbloom. Send your list to Mr. & Mrs. Charles Moorehead,

continued on page 11

ELEVENTH ANNUAL CONVENTION
June 22, 23, 24, 1984

National Cambridge Collectors, Inc.

CONVENTION ACTIVITIES

will be held in the

SHENANDOAH INN

P.O. Box 147, Old Washington, Ohio 43768
(Interstate 70 - Exit 186 - 7 Miles East of Cambridge, Ohio)
Phone - 614/489-5511

SCHEDULE OF EVENTS

FRIDAY - June 22nd

- 1 - 4 p.m. REGISTRATION
Book Sales Table
(ALL Convention
participants
must be Registered)
- 1 p.m. GLASS FACTORY
TOURS - meet at
Shenandoah Inn.
- 6 - 9 p.m. ANTIQUE SHOW
Main Ballroom
- 9:30 p.m. GET-ACQIANTED
PARTY - Banquet
Room - PAY BAR
"Mini-Auction"

SATURDAY - June 23rd

- 6 a.m. - 5 p.m. FLEA MARKET
Guernsey County Fair
Grounds
- 8 - 10:30 a.m. REGISTRATION
Banquet Room
- 8 - 10:30 a.m. CONTINENTAL
BREAKFAST
Banquet Room
Speaker: Lynn Welker
Topic: NEAR CUT
- 11 a.m. - 6 p.m. ANTIQUE SHOW
Main Ballroom
- 6:30 - 7:30 p.m. COCKTAIL HOUR
Banquet Room
- 7:30 p.m. ANNUAL BANQUET
Banquet Room
Program: Lynn Welker
& Frank Wollenhaupt
Topic: ETCHINGS
- color slides

SUNDAY - June 24th

- 9 a.m. BUFFET BREAKFAST
Banquet Room
Annual Business Mtg.
"Show & Tell"
- 12 noon - 6 p.m. ANTIQUE SHOW
Main Ballroom
- 1 p.m. FORMER EMPLOYEES
MEETING
N.C.C. MUSEUM

CONVENTION '84



FRANK WOLLENHAUPT and LYNN WELKER

If you are interested in learning more about Cambridge Glass, then count yourself fortunate if this is the year you are planning to attend the NCC Convention. Convention chairman Jo Barstow has lined up outstanding programs for both the Saturday morning Breakfast and Saturday evening Banquet.

Lynn Welker will be the featured speaker for both events and he will be assisted by Frank Wollenhaupt during the Saturday evening Banquet. Lynn's topic for the breakfast will be "Cambridge Near Cut." Saturday evening he will speak to us on the subject of "Cambridge Etchings."

Lynn Welker has been a member of the NCC Board of Directors since 1975. He has served as chairman of our Auction committee for the past nine years and has served on many other committees including: Convention, Antique Show, Projects, Program & Entertainment, Museum and others. He was our Convention Banquet speaker in 1980. Lynn resides in New Concord, Ohio, where he is manager of his family owned antique business. He and his parents have co-authored four books on Cambridge Glass. Lynn is widely known for his knowledge of Cambridge, as well as other types of collectible glassware. It is our good fortune that he has agreed to speak to us once again.

Frank Wollenhaupt was elected to the NCC Board of Directors in 1974. He too has served NCC in many capacities including, Sergeant-at-Arms, and Publicity and Program & Entertainment chairman, and has served on such committees as Display Room, Convention, Antique Show, Auction and many others. He and his wife Vicki presently reside in Dayton, Ohio, and he is employed as Regional Salesman for OKI Supply Company of Cincinnati. Frank is well qualified as a photographer and has taken the photos for many (if not all) of the rental Slide Programs owned by NCC.

Both of these Programs promise to be outstanding learning events and it is recommended that you get your reservations in early.

PUNCH BOWLS and SETS 1940-58

PART II

by MARK NYE

The Mount Vernon punch bowl received very little coverage in the 1940 price list. It received a single entry under "Punch Bowls, Cups and Ladles," and was not even shown in the catalog.

It was listed as Mount Vernon #48, 11" footed punch bowl with a capacity of only 3 quarts, produced in crystal. No punch cup was listed nor was a Mount Vernon punch set. Presumably, one was to purchase the regular cup and saucer and use this cup if matching cups were desired. No listing for this bowl is found in the 1949 or later catalogs and price lists. The Mount Vernon line predated 1940 and you may find this bowl in color.

From the Tally-Ho line, two punch bowls were being made in 1940. They were the #1402/64 and the #1402/77. The former, also listed as a 10 1/2" low footed bowl, holds 4 quarts when used as a punch bowl. In addition to serving as a punch bowl, this piece was no doubt intended to be an all purpose large bowl. It is of interest to note that in the Tally-Ho section of the 1940 price list, the bowl is listed in crystal only, while under punch bowls, color availability is given as crystal, amber, and royal blue.

Under "Punch Sets," the #1402/64 bowl is combined with the Tally-Ho #1402/29 plate, 12 #1402/10 cocktails and the Pristine punch ladle. Once again we find an inconsistency. In the regular Tally-Ho listings, the cocktail is said to be made in crystal, royal blue and carmen, while under "Punch Sets," amber is given as an available color. Perhaps at this time, amber cocktails were only being made to go with the punch sets. (Note that a full line of amber Tally-Ho stemware was made during the 1930s.) In addition to amber, the punch set was also listed in crystal and royal blue. You will find this set in carmen, but these predate 1940.

While not listed under Elaine as the punch bowl, the #1402/64 bowl was, in 1940, made in crystal etched Elaine. The #1402/29 plate and the #1402/140 5 oz. handled cup were also etched Elaine (crystal only) and hence, there is no reason why an Elaine etched #1402/64 Tally-Ho punch set could not be or was not assembled.

The #1402/77 punch bowl is the larger of the two Tally-Ho punch bowls, measuring 13" in diameter and holding 6 quarts. It was made in crystal, amber, forest green, royal blue and carmen, as was the #1402/29 plate and the #1402/78 punch cup. However, during 1940, the #1402/111 ladle was made in just two colors, crystal and carmen. Fifteen piece punch sets were available in any of the previously listed colors and were made up of the items just listed. Crystal ladles were used for all sets except for those in carmen and then a carmen ladle was used. A second fifteen piece set, also using the #1402/77 bowl and #1402/29 plate was available and these incorporated the #1402/140 5 oz. punch cup rather than the #1402/78 punch mug. The 5 oz. cup was made in crystal or crystal with amber, royal blue, forest green or carmen handles.

Both the #1402/77 punch bowl and the #1402/78 punch mug were listed in the 1940 price list as being made in crystal etched Elaine. Thus either of the #1402/77 punch sets could be had in crystal plain or etched Elaine.

Before we depart from the Tally-Ho line, one more inconsistency must be pointed out. In the 1940 price list, two different descriptions were given for the item numbered #1402/78, 6 oz. punch cup and 6 oz. punch mug. The mug description appears under the regular Tally-Ho listings while the cup description is the one used in the Punch Bowl section. The actual catalog page showing the punch set shows the mug. There is, however, a #1402/78 footed punch cup, identical in appearance to the footed coffee cup, shown in the N.C.C. 1930-34 Catalog Reprint.

The Tally-Ho line, including the punch bowls, was discontinued before 1949. The #1402/77 bowl and the #1402/140 cup were apparently revived during 1953 since they appear on the October 1953 price list. Listed with the bowl and cups was a styrene ladle, one of the two listings found for this type of ladle. The set must not have sold well for there is evidence showing the mold for the bowl was reworked into a mold for another punch bowl.

Unique among Cambridge punch bowls is the #1800. It is unique in that it is a covered bowl. The #1800 punch bowl is ball shaped

continued on page 6



Punch Sets



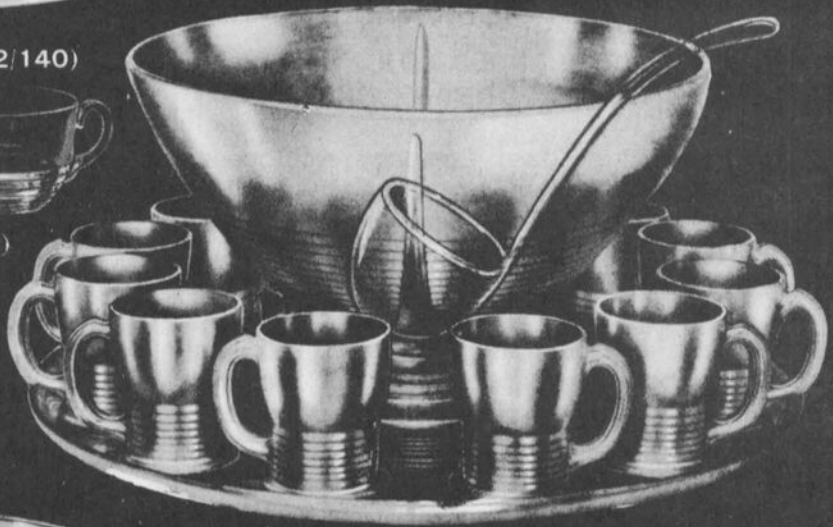
- 1800—16 pc. Punch Set
- 1—1800—10 in. Bowl & Cover
(Blown) (9 qts.)
- 12—1800—5 oz.
Punch Cup (Blown)
- 1—1800—Ladle
- 1—1800—17 in. Plate

JANUARY 1, 1940

(1402/140)



- 1402 Tally-Ho—15 pc.
Tom & Jerry or Punch Set
- 1—No. 1402/77—13 in. Bowl (6 qts.)
- 12—No. 1402/78—6 oz. Cup - or
No. 1402/140—5 oz. Cup
- 1—No. 1402/111—Ladle
- 1—No. 1402/29—17½ in. Plate



- 1402 Tally-Ho—15 pc. Punch Set
- 1—No. 1402/64—10½ in. Bowl
(4 qts.)
- 12—No. 1402/10—3 oz. Cocktail
- 1—No. 485—Ladle
- 1—No. 1402/29—17½ in. Plate

PUNCH SETS continued from page 4

and was listed as a 10" bowl holding 9 quarts. While the punch cup listed and shown with the set is numbered #1800, they are in fact from the #7801 line. The underplate used with this bowl is the Pristine #169 18" plate and the ladle is the Pristine ladle. No mention of this bowl is found in the 1949 or later catalogs and price lists. Production in 1940 was limited to crystal.

From the catalog illustration, the #1800 bowl appears to be somewhat similar in appearance to the Gyro Optic pattern. However, the Gyro Optic line number is #3143 and nowhere in the 1940 price list is there a bowl of this nature listed under Gyro Optic. It is possible this bowl may originally have been introduced before 1940, and if so, it is possible it was made in color.

to be continued

SOCIAL HOUR PLANNED FOR FORMER CAMBRIDGE GLASS COMPANY EMPLOYEES

Former Cambridge Glass Company employees, along with their spouse, are cordially invited to attend a Special Social Hour meeting to be held at 1 p.m., Sunday, June 24th, in the N.C.C. Museum.

The purpose of this meeting is to provide N.C.C. members the opportunity of meeting with and expressing their appreciation and gratitude to these former workers for their involvement in the production of the beautiful and highly collectible Cambridge Glass. Refreshments will be served (there will be no charge for this meeting).

Persons having knowledge of former employees are enlisted to encourage their participation.

For further information please contact Bill Smith, Public Relations, N.C.C., Inc., P.O. Box 416, Cambridge, OH 43725 or telephone him at 513/323-3888.

"The way to gain a good reputation is to endeavor to be what you desire to appear."
SOCRATES

BOOK DISCOUNT OFFERED TO NCC MEMBERS ONLY!

At a recent Board of Directors meeting, a motion was made and approved to allow N.C.C. members a 10% discount on any N.C.C. publications.

These publications and their price before discount include: 1930-34 Catalog Reprint (price guide included) \$14.95; 1949-53 Catalog Reprint (price guide included) \$14.95; 1956-58 Catalog Reprint \$6.95; and the NEW Cambridge Color Book (price guide included) \$19.95. This motion also included a SPECIAL Package Price of all four (4) books for \$50.00.

The normal postage charge of \$1.00 per order will still apply to any mail orders. Ohio residents include 6% sales tax.

Members who have ordered their NEW Color Book in advance will be issued a refund for this 10% discount.

1935 CATALOG PAGES SURFACE

The Cambridge Glass Company catalog pages being reprinted on the next four pages are part of a recent find by NCC member Kevin Jorgensen. He and his wife have been kind enough to share these pages with us.

There are forty-four pages in total and the balance will be printed in future issues of the CRYSTAL BALL, as space permits.

WE GET LETTERS

Dear Phyllis: Thank you for printing my letter in the January (1984) issue. Thanks also to Elaine Storck's response in the February issue for identifying my flower frog. My sweet pea vase, however, was not pictured in Weatherman's Book II. My vase is shaped similar to one shown in Bennett's "The Cambridge Glass Book," page 21. row 3.

Thank you, Vicki Sansom

Don't Forget These Deadlines: Convention Registration - JUNE 10th Ballots - JUNE 15th!

CANDLESTICKS *and* CANDELABRA



Mt. V. 38 13 $\frac{1}{2}$ Inch
W/Bobeche & Prisms
\$112,00 dozen

Manufactured By
THE CAMBRIDGE GLASS COMPANY
CAMBRIDGE, OHIO





THE CAMBRIDGE GLASS COMPANY

 3500/108 2 1/2 Inch \$4.00 dozen	 628 3 1/2 Inch \$6.90 dozen	 637 3 1/2 Inch \$3.50 dozen	 639 4 1/2 Inch \$5.00 dozen	 627 4 Inch \$9.90 dozen
 M. W. 72 4 Inch \$4.15 dozen	 Mt. V. 130 4 Inch \$5.00 dozen	 1402/76 5 Inch \$6.15 dozen	 3500/74 4 Inch \$6.90 dozen	 3500/31 6 Inch \$8.25 dozen
 Everglade 10 4 inch \$4.15 dozen	 646 5 inch \$13.75 dozen	 647 2 Holder \$20.60 dozen	 638 3 Holder \$23.75 dozen	
 3500/94 2 Holder \$20.60 dozen	 1307 3 Holder \$20.00 dozen	 1338 3 Holder \$23.75 dozen		
 1357 3 Holder \$40.00 dozen	 1355 2 Holder \$40.00 dozen			

The prices shown represent high retail prices. Write for discounts.



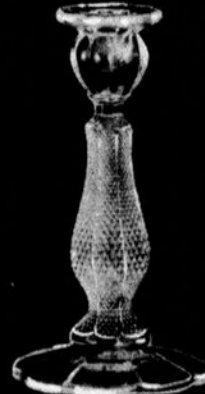
1402/80 6 inch
\$16.50 dozen



1192 6 inch
\$16.50 dozen



3011 9 inch
\$24.75 dozen



Mt. V. 35 8 inch
\$15.80 dozen



M. W. 3 9 inch
\$16.50 dozen



1402/81 6 inch
W/Bobeche & Prisms
\$39.50 dozen



1270 6 1/2 inch
W/Bobeche & Prisms
\$39.50 dozen



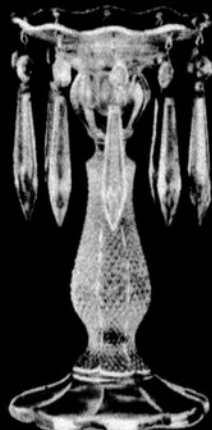
3011 9 inch
W/Bobeche & Prisms
\$56.25 Doz.



3500/32 6 1/2 inch
W/Bobeche & Prisms
\$31.60 dozen



1271 7 inch
W/Bobeche & Prisms
\$39.50 dozen



Mt. V. 36 8 1/2 inch
W/Bobeche & Prisms
\$47.50 dozen



1272 10 1/2 inch
W/Bobeche & Prisms
\$47.50 dozen



1273 10 1/2 inch
W/Bobeche & Prisms
\$47.50 dozen



1269 10 inch
W/Bobeche & Prisms
\$47.50 dozen

The prices shown represent high retail prices. Write for discounts.



THE CAMBRIDGE GLASS COMPANY



3500/95 2 Holder
W/Bobeche & Prisms
\$63.15 dozen



1268 2 Holder
W/Bobeche & Prisms
\$63.15 dozen



Everglade 3 2 Holder
\$39.50 dozen



Everglade 32
\$23.70 dozen



3500/88 6 inch
Torchiere
\$7.90 dozen



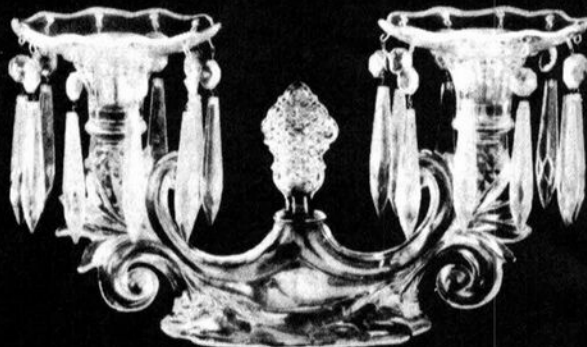
3500/90 6 inch
Torchiere, Ash Tray Foot
\$7.90 dozen



Everglade 2
\$23.70 dozen



Everglade 33
\$23.70 dozen



1356 2 Holder
W/Bobeche & Prisms
\$82.50 dozen



1358 3 Holder
W/Bobeche & Prisms
\$82.50 dozen

The prices shown represent high retail prices. Write for discounts.

"THOUGHTS" continued from page 2

c/o N.C.C.Inc., P.O. Box 416, Cambridge, OH 43725. They will let you know which pieces they can use and would like for you to bring.

If you have a Cambridge console set in any purple color that you would be willing to loan to the committee in charge of decorating the Banquet tables, please send this information to the N.C.C. P.O. Box address and you will be contacted as to whether or not you should bring it. Any help of this nature is needed and appreciated.

The Color Book will be ready by Convention. Barring any unforeseen difficulties it will be on sale at the Book Sales table. If you cannot attend the Convention and want to send your order in now, your book will be mailed to you as soon as possible after Convention. (See new pricing information for members ONLY, on page 6 of this issue.)

We will have the first three plates of our Cup Plate series for sale during the Convention. It is possible that you may be able to purchase the fourth one at that time also.

While we are talking about books and cup plates, perhaps we need to remind you that all of these items, plus the Scotty Dog bookends and a variety of other items are available at the MUSEUM. Those of you who live locally, or wish to drive to the MUSEUM, can pick these items up there and save the shipping charges.

There has been discussion for sometime about having an Acquisition Committee to buy glass and other memorabilia for the MUSEUM. I will, sometime in the near future, appoint such a committee as per the discussion we had at our recent Directors meeting. This will give those of you who wish to donate monies for the purpose of buying glass or memorabilia, expressly, a chance to do so. You can merely earmark your donation to be used by the Acquisition Committee. Until this time, all monies went into the MUSEUM fund and were used as needed. This will give us more flexibility in purchasing glass for the MUSEUM.

Hopefully, with a donated budget, the Acquisition Committee will be able to purchase items as they become available rather than wait for Board approval. For those of you who may not understand all of this, expenditures

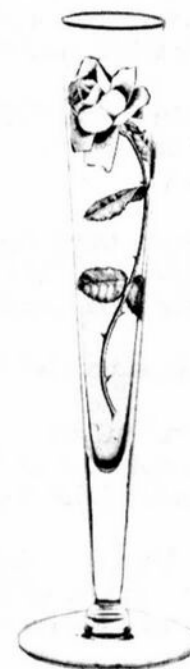
of any type, unless previously budgeted or approved, had to be approved by the Board of Directors. This may seem a bit ridiculous at times, but it is a rule that must be heeded if an organization such as ours is to be successful.

Well, I've rattled on long enough for now. It's time to quit being serious, and time to be gay and think about the fun time we'll all have at CONVENTION '84. See you there!

GOLD DECORATED
D/1063 (Talisman Rose)



278
11 in. Ftd. Vase



274
10 in. Ftd. Vase

VISIT YOUR MUSEUM

HOURS:

Wednesday thru Sunday - 12:00 to 4:00 P.M.

Closed Monday & Tuesday

Closed November, December, January
and February

Museum Telephone Number – 614-432-4245

COMBINED GLASS CLUBS HOLD MEETING

reported by DEB PUGLIESE
N.D.G.A. Board Member

On March 31, 1984, at 12:05 PM, the first meeting of the National glass collectors clubs took place at the Shenandoah Inn, Old Washington, Ohio. Four clubs were represented.

1. Heisey Collectors of America, Inc., represented by Tom Bredehoft, President.
2. National Cambridge Collectors, Inc., represented by Willard Kolb, President and Janice Hughes, Secretary.
3. Fenton Art Glass Collectors of America, Inc., represented by Ferill Jean Rice, Secretary.
4. National Depression Glass Association, Inc., represented by LeRoy Sanders, President and Debra Pugliese, Board Member.

Other clubs invited but not present were:

1. Fostoria Glass Society of America, Inc.
2. National Duncan Glass Society.
3. Imperial Glass Collectors Society.

It was discussed that there were many ways that our clubs could work together to benefit each of us. Among these topics:

1. A uniform application blank on which each club is listed and their logo appears. This can cut down on newsletter space and advertising costs.
2. An agreement to try to plan individual conventions on dates not interfering with one another.
3. To work on passing legislation to make it mandatory that companies mark all reproduction glass.
4. To begin preparations on producing video tape presentations on all-glass patterns that the individual collector could purchase.

5. Plans for an all-glass convention to be held in the Ohio area using a large building housing all clubs. Possibilities for this are endless.

6. Plans for an all glass museum containing glass from all companies. Small museums across the country are closing because of lack of financial aid and the type of help that larger museums are receiving from our government. If the clubs could work together on this, so much more could be done to help preserve our beautiful and valuable glass and it's heritage.

Everyone present was pleased that the clubs had finally started to work together instead of against one another. It was comforting to know that the problems one club faces seems to be or have been the same problems faced by all. We then agreed that we would present these ideas to our respective Boards and members. We would like feedback on members' feelings so as to acquire new ideas for inter-club cooperation.

Also, it was decided that the three carnival glass clubs and the cut glass club should be invited to any future meetings. At 3:30 PM the meeting closed. There was a warm feeling of satisfaction for what had been accomplished.

YES, IT IS CAMBRIDGE GLASS!

by PHYLLIS SMITH

Did any of you have time to look up the two pieces of glass shown at the bottom of page 2 in last months issue of the CRYSTAL BALL?

If you did look, but were unable to find reference to these pieces, I would like to tell you that they can be found on page 41 of Welkers Reprint II. As you can see, they belong to the Pristine family.

I was especially attracted by their "different" looking lids. Hopefully study of this page will familiarize all of us with these shapes so we will not overlook them, if and when they turn up at a flea market, show, etc. If you ever find one of these candy boxes, please write and let me know.

DON'T FORGET THESE DEADLINES

Must be postmarked by: Convention Registration - June 10th & Ballots - June 15th.

COLUMBUS, OHIO ANTIQUÉ FLEA MARKET

Ohio State Fairgrounds - Lausche Building
Off I-71 Exit 17th Avenue - Columbus, Ohio

JUNE 24th

Sunday Only - 7 A.M. to 4 P.M.
Show Admission \$1.00 - Under 12 Free
150 QUALITY DEALERS

SELLING Advertising Art Deco, books, Cambridge, clocks, coins, collectibles, Depression glass, dolls, Fiesta, fine early furniture, Heisey, jewelry, lamps, oak furniture, post cards, pottery, good primitives, tools and print shop items.

STOCKWELL PROMOTIONS

4214 North High Street
Columbus, Ohio 43214
(614) 267-8163/263-6830/885-2352

NEXT SHOWS:

September 9, October 14, November 11, December 2

STAGE COACH ANTIQUE MALL

(formerly White Pillars Antiques)

7525 East Pike
Norwich, OH 43767
614/872-3720

MANY DEALERS. . .

PLENTY OF PARKING. . .

**WIDE SELECTION OF GLASS
AND POTTERY'**

**FURNITURE AND
GENERAL LINE!**

BUY and SELL

OPEN YEAR ROUND

Weekdays - 10 AM - 5:30 PM

Sunday - 12 noon - 5:30 PM

Summer Evening Hours - by Chance!

Located 9 miles E. of Zanesville, OH, on I-70 to Norwich Exit No. 164 - then ½ mile W. on Route 40.

— Classified —

BUYING: CAPRICE Moonlight or Rosepoint by Cambridge; Rose or Orchid by Heisey; and American, June, Fairfax, Versailles, Trojan, etc. by Fostoria. Nadine Pankow, 207 South Oakwood, Willow Springs, IL 60480. 312/839-5231

FOR SALE: CAMBRIDGE, Heisey, Duncan and other fine glass. Send SASE for list. M & J Antiques, c/o Sir Speedy, 431 Main Street, Woburn, MA 01801.

NEEDED: CAMBRIDGE Wildflower, one #3121, 12 oz. footed ice tea. Write or phone Betty Wright, 424 Chapple Hill Drive NE, North Canton, OH 44720. 216/494-2007

WANTED: CAMBRIDGE SQUARE. Interested in different pieces. What have you? Condition and prices please. Ruth Rutkauskas, 151 Grienbrier Drive, Carnegie, PA 15106.

WANTED: EUCLID CUTTING on #3750 stemware and #555 salad plates. Ref: NCC 1949-53 Catalog Reprint, page 105. Col. Nicholas H. Nance, 1384 Buck Wood Lane, Monument, CO 80132. Phone: 303/481-2151

NATIONAL CAMBRIDGE COLLECTORS

FLEA MARKET

SATURDAY, JUNE 23rd

6 A.M. to 5 P.M.

DEALERS MUST REMAIN SET UP UNTIL 2 P.M.

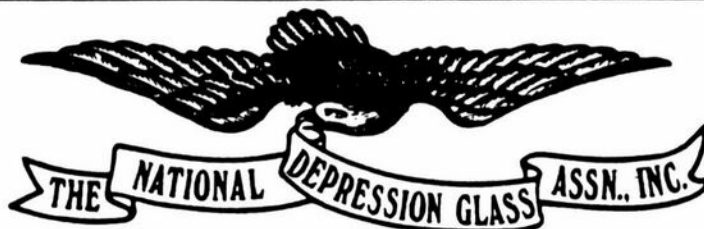
GUERNSEY COUNTY FAIRGROUNDS

OLD WASHINGTON, OHIO

(one mile East of I-70, Exit #186, on Old U.S. 40)

DEALER SPACE AVIALABLE

For information or Contract write: Larry Hughes, Chrm., P.O. Box 416, Cambridge, OH 43725



THE PURPOSE OF THE ASSOCIATION IS TO UNITE PEOPLE IN GOOD FELLOWSHIP THROUGH SPONSORED ACTIVITIES AND FORM A CENTRAL ORGANIZATION OF MEMBERS WHO ARE INTERESTED IN PROMOTING DEPRESSION GLASS THROUGH AN EXCHANGE OF IDEAS AND INFORMATION.

BENEFITS OF MEMBERSHIP INCLUDE RECEIPT OF THE NEWSLETTER "NEWS & VIEWS," VOTING PRIVILEGES, AND NOTICE OF SPECIAL EVENTS SUCH AS THE ANNUAL CONVENTION, SHOW, AND SALE.

APPLICATION FOR MEMBERSHIP

MEMBERSHIP DUES PER YEAR: SINGLE \$8.00 _____ FAMILY \$10.00 _____

___ MR. ___ MRS. ___ MISS ___ MS. _____

ADDRESS _____

CITY _____ STATE _____ ZIP _____

MAKE CHECKS PAYABLE TO: NDGA, INC., AND MAIL TO
GEORGEANN HEMRY, MEMBERSHIPS
8337 SANTA FE LANE (CB)
SHAWNEE MISSION, KS 66212

DEALERS



DIRECTORY

NOTE: When writing to the Dealers listed here, please enclose a SASE!

<p>EVELYN M. ALLEN 135 Cynthia Street Heath, Ohio 43055 Mail Order & Shows 614-522-1635 SPECIALIZING IN CAMBRIDGE GLASS!</p>	<p>BENICIA ANTIQUE SHOP 305 First Street Benicia, California 94510 OPEN 11 AM - 5 PM Closed Monday Z. E. LOPES 707-745-0978</p>	<p>CHARLES MIKULIK Box 416 Elizabeth, N.J. 07207 — COLLECTOR — Always paying good prices for CAMBRIDGE CAPRICE in all colors 201-688-1144 CARRY MOST TYPES OF ANTIQUES</p>
<p>BLUE BONNET SHOPPE at The Main Place 102 West Mistletoe at Main San Antonio, TX 78212.....512/736-4900 Antiques, Crystal, Collectibles! Open 7 days!</p>	<p>VISIT HISTORIC BENICIA and its 28 shops Off Interstate #80 North of San Francisco</p>	
<p>BERKELEY ANTIQUES 69 Berkeley St. Boston, MA 02116 George or Frank 617-426-1048 CAMBRIDGE, HEISEY, GENERAL LINE</p>	<p>ANDREJCAK'S ANTIQUES 14533 Bayes Ave Lakewood, Ohio 44107 Joe & Karen Andrejcek 216-226-3417 SHOWS ONLY — CAMBRIDGE — FENTON — CHINA</p>	<p>HENDERSON'S ANTIQUES 303 Guilford Ave., Woodsfield, OH 43793 Mary & Wilbur Phone: 614 472-1133 SPECIALIZING IN CAMBRIDGE GLASS Shows, Mail & Stagecoach Antique Mall</p>
<p>D & D ANTIQUES Columbus, Ohio DICK SLIFKO SHOWS ONLY</p>	<p>THE HITCHING POST 7467 S R 88 Ravenna, OH 44266 Ph 216-296-3686 D McDaniel CAMBRIDGE — HEISEY — GENERAL LINE</p>	<p>GLASS RAINBOW of California P.O. Box 127, Elk Grove, CA 95624 Neil & Ervina McCartney Hours: 9am-4pm & 7-9pm 916/685-5485 BY APPOINTMENTS & SHOWS!</p>
<p>THE GLASS CUPBOARD 39 Shire Oaks Drive Pittsford, New York 14534 Marcia Ellis 716-586-7596 CAMBRIDGE ONLY INQUIRIES INVITED</p>	<p>GEORGE HOFFMAN ANTIQUES 129 South 4th Street Newark, Ohio 43055 614-345-8021</p>	<p>PEG AND DALE GOTSCHALL 833 N. 6th Street, Cambridge, OH 43725 ANTIQUES and COLLECTABLES including quality crystal and colored glass Hours by Chance or Appointment 614/432-5529</p>
<p>THE ANTIQUERY 42 E. Main St., St. Rt. 40 New Concord, Ohio 43762 Ph. 614-432-4483 Richard Bennett <i>Specializing in Cambridge Glass</i></p>	<p>J & L GLASS Laws Antique Center, Manassas, VA 22111 and 10629 Main St. Fairfax, VA 22030 703/273-8579 BUY & SELL Depression, Cambridge, Heisey, Duncan & Fostoria Glass</p>	<p>1886 HOUSE East Schodack, N.Y. 12063 MAIL and SHOWS Laurie Cruise 518-477-5895 CAMBRIDGE - NORITAKE - AZALEA - D.G.</p>
<p>joyce's antiques Bought and Sold Specializing in HEISEY • CAMBRIDGE • VERLYS • AMERICAN GLASS P O Box 114 Albertson N Y 11507 (516) 499-3396</p>	<p>PLATE MATES 3904 Cleveland Place Metairie, LA 70003 Kathryne L. Creamer 504/887-0631 BUY or SELL — DISCONTINUED CHINA & CRYSTAL</p>	<p>SALT FORK ANTIQUES 10 miles North of Cambridge Exit 54 off I-77, then 1/2 mile East Hours: Tuesday thru Saturday 12 noon - 5 p.m. 614/432-2020 614/439-4039</p>
<p>THE GLASS MENAGERIE Unit 4, Plaza 20, Route 50 North Easton, MD 21601 Barbara & Bill Danels 301/822-8794 SPECIALIZING IN GLASSWARE OF THE DEPRESSION ERA</p>	<p>AL STEELE Westerville, Ohio 614-882-6483 or 614-882-7124 Mail Orders and Shows Only HEISEY — CAMBRIDGE — PATTERN GLASS</p>	<p>BETTY'S ICE HOUSE ANTIQUES 517 Fulton Street Wausau, Wisconsin 54401 Quality Antiques Cambridge - Heisey - General Line Betty R. Puestow Hours 1-5 Daily 715-848-7145 or by appointment</p>
<p>MARGARET LANE ANTIQUES 2 E. Main St., New Concord, OH 43762 Lynn Welker 614/826-4418 CAMBRIDGE GLASS MATCHING SERVICE Hours Mon.-Fri. 1-5 PM or by Appointment</p>	<p>SHIRLEY S. LADOUCEUR Antiques and Collectibles Specializing in Cambridge Glass BY APPOINTMENT 7597 Daphne Drive 315-458-5297 No. Syracuse, NY 13212</p>	<p>GREEN ACRES FARM Antiques, Crystal Glass & Collectibles Sat. & Sun. 1-7 PM (614) 927-1882 2678 Hazelton Etna Road (State Route 310 North) Pataskala, Ohio 43062</p>



National Cambridge Collectors, Inc.

P. O. Box 416, CAMBRIDGE, OHIO 43725

The National Cambridge Collectors, Inc. is proud to present an original film produced by the Cambridge Glass Co. in the 1950's. The film is entitled THE CRYSTAL LADY. It is a most interesting film and includes pictures of the factory and the workers making the fine Cambridge Glass. It is a 16mm sound movie that runs about 40 minutes.

The following 5 slide presentations are now available:

No. 1 is on the Display rooms and close-up shots of particular pieces of interest.

No. 2 is of different stems made by Cambridge Glass Co.

No. 3 covers Cambridge Glass candlesticks.

No. 4 is of Cambridge colors.

No. 5 presents Cambridge Glass figurals.

These 5 presentations are available in Kodak carousel slide trays and are supplied with narratives on each slide.

NOTE: NCCC Study Clubs may use these presentations free of charge except for postage to and from destination.

TO RESERVE PLEASE CHECK THE ITEM (OR ITEMS) DESIRED.

MAKE CHECK PAYABLE TO: NATIONAL CAMBRIDGE COLLECTORS, INC.

THE CRYSTAL LADY and all 5 slide presentations have a deposit fee of \$25 and a rental fee of \$15 which will be deducted from the deposit fee.

THE CRYSTAL LADY

No. 1 Display rooms and particular pieces

No. 2 Stems

No. 3 Candlesticks

No. 4 Colors

No. 5 Figurals

TOTAL DEPOSIT FEE:

NAME OF ORGANIZATION:

ADDRESS:

CITY & STATE:

ZIP

DATE NEEDED:

FIRST-CLASS MAIL
U.S. POSTAGE
PAID
So. Vienna, Ohio
45369
Permit No. 15

National Cambridge Collectors, Inc.
P. O. Box 416 Cambridge, Ohio 43725

FIRST CLASS MAIL



9th Annual

NATIONAL CAMBRIDGE COLLECTORS

ANTIQUÉ SHOW & SALE

(& 11th Annual NCCC Convention)

SHENANDOAH INN
INTERSTATE 70 · EXIT 186 · 7 MILES EAST OF
CAMBRIDGE, OHIO

JUNE 22, 23, 24, 1984

	HOURS
FRIDAY JUNE 22nd (PREVIEW COMMISSION \$3.50)	6:00 - 9:00
SATURDAY JUNE 23rd	11:00 - 6:00
SUNDAY JUNE 24th (ADMISSION \$1.75)	12:00 - 5:00

OFFERING CAMBRIDGE AND OTHER FINE GLASSWARE
ALONG WITH A GENERAL LINE OF ANTIQUES

FOOD DOOR PRIZES PARKING

JUNE

1984

