

Cambridge



Crystal Ball

ISSUE NO. 135

JULY 1984

Published monthly by the NATIONAL CAMBRIDGE COLLECTORS, Inc.
To encourage and to report the discovery of the elegant and boundless product
of the Cambridge Glass Company, Cambridge, Ohio

THOUGHTS FROM YOUR PRESIDENT

Here we go with the weather again. I only mention it because it has been a nasty culprit so far as our trying to get anything accomplished outside at the MUSEUM.

This past Saturday (May 26th) we had planned to do much work at the MUSEUM. When we arrived at about 8:30 a.m. it began pouring rain and we thought maybe the weather had gotten the best of us again. However, we used a different technique this time. Instead of calling everything off, we decided we would be as nasty as it was and work in the rain.

Larry and Janice Hughes, Bill Harbaugh, my son David and I worked cleaning up debris, trimming, making some drainage ditches and digging around the new addition with the backhoe where we want to move in top soil and plant shrubs. Bill Smith, who had brought his riding mower, mowed the north forty. I don't know if he got wetter from the downpour or from the grass that was up around the steering wheel on his tractor. Anyway, the moral of this story is "BE PERSISTENT." The nasty weather couldn't compete with us so it gave up. By about noon it decided to be nice and we got quite a lot done.

Even with our accomplishments, it was a very sad day for all of us. Phyllis Smith called the MUSEUM with the sad news that LeRoy Sanders had passed away. Probably many of you knew LeRoy. He was President of the National Depression Glass Association, Inc., Chairman of their forthcoming Show and Convention to be held in Houston, Texas in July, and an active member of our club. He was doing much good work in the field of organizing representatives of the National Glass Collecting organizations to further benefit all glass collectors. He will be greatly missed. Our condolences to his wife Janet and their family.

Your next issue of the CRYSTAL BALL will show you, and tell you about the fun you missed by not attending "Convention '84." We hope it is comprehensive. Although we wish everyone of our great members could attend, we know it is not possible.

There are still some of the Cup Plates available in crystal, cobalt blue and teal. The fourth in this series will be amethyst. This amethyst plate should be ready by Convention or shortly after. Get your order in as soon as possible. We want to move these as rapidly as possible so we can order the next in the series.

WILLARD

MEMBERSHIP RENEWAL NOTICE

If the date on your
address label is..

7 - 84

This is your LAST ISSUE of the CRYSTAL BALL.
Please renew NOW!

HAVE A SAFE AND HAPPY 4TH OF JULY!

CAMBRIDGE CRYSTAL BALL

Official publication of National Cambridge Collectors, Inc., a non-profit corporation with tax exempt status. Published once a month for the benefit of its members.

Membership is available for individual members at \$13 per year and additional members (12 years of age and residing in the same household) at \$3 each. All members have voting rights, but only one *Crystal Ball* will be mailed per household.

Back issues of the *Crystal Ball* are available (beginning with Issue No. 1, May 1973) for members only. Cost: \$.60 each or 12 issues for \$7.

1983-84 OFFICERS & COMMITTEE CHAIRPERSONS

PRESIDENT	Willard Kolb
VICE-PRESIDENT	Josephine Barstow
SECRETARY	Janice Hughes
TREASURER	William Smith
SERGEANT-AT-ARMS	Don Armbricht
BUDGET & FINANCE	David Rankin
BY-LAWS	David Rankin
CONVENTION	Josephine Barstow
MEMBERSHIP	Phyllis Smith
MUSEUM	Billy Harbaugh
PROGRAM & ENTERTAINMENT	Frank Wollenhaupt
PROJECT	Willard Kolb
PUBLIC RELATIONS	William Smith
PUBLICITY	Joseph Andreicak
STUDY GROUP ADVISOR	Evelyn Allen
1984 AUCTION	Lynn Welker
1984 ANTIQUE SHOW	Joy McFadden
CRYSTAL BALL EDITOR	Phyllis Smith

CLASSIFIED ADVERTISING RATES

5c per word \$1.00 minimum
 We cannot mix type size in classified advertisements. Abbreviations and initials will count as words. Payment in full MUST accompany all ads.

DISPLAY ADVERTISING RATES

	Members	Non-Members
1/8 page	\$ 4.00	\$ 6.00
1/4 page	7.00	10.00
1/2 page	12.00	18.00
3/4 page	17.00	25.00
Full page	22.00	33.00

DEALERS DIRECTORY

1" ad (5 line maximum) \$6.00 for 6 months

Cambridge *Crystal Ball* assumes no responsibility for items advertised and will not be responsible for error in price, description or other information.

Advertising copy, articles, and club news and notices must be in our hands by the 10th of each month to assure publication in our next issue. Advertisements containing reproductions will not knowingly be accepted unless clearly stated.

Opinions or information stated in any signed article or letter printed in the *Crystal Ball* are those of the writer only and may or may not agree with National Cambridge Collectors, Inc. The editor reserves the right to refuse or edit material submitted for publication to conform to the editorial style of the *Crystal Ball*.

PLEASE ADDRESS ALL CORRESPONDENCE TO
 National Cambridge Collectors, Inc.
 P.O. Box 416
 Cambridge, Ohio 43725

PRESIDENT: Willard Kolb 614/695-0695
 SECRETARY: Janice Hughes 614/432-7823
 EDITOR: Phyllis Smith 513/323-3888

PLEASE NOTIFY US IMMEDIATELY OF ANY CHANGE IN YOUR ADDRESS!

Please enclose a self-addressed stamped envelope when requesting information!!

Color Book

AT LONG LAST! THE NEW COLOR BOOK HAS ARRIVED!

It is beautiful and if you weren't at the Convention to pick up your copy, you will want to get your order in the mail right away.

The retail price is \$19.95, but your Board of Directors voted all members a 10% discount, so the price is \$17.95. Remember, this price is for MEMBERS ONLY.

To place your order, send \$17.95 for each book ordered, and \$1.00 (per order) for postage and handling. If you are a resident of Ohio please add \$1.08 each for sales tax. Send your order to: National Cambridge Collectors, Inc., P.O. Box 416, Cambridge, OH 43725.

AN ADDITIONAL REMINDER: We announced in last month's *CRYSTAL BALL* that the Board of Directors also voted a 10% discount to MEMBERS ONLY on any of the four books published by N.C.C.; and a SPECIAL deal of all four books (including the New Color Book) for \$50. When ordering be sure to add the \$1.00 for postage and handling, and the additional 6% sales tax if you live in Ohio.

GET YOUR ORDER IN SOON!

FISH HATCHERY JAR

The interesting advertisement shown here on page 3, has been acquired for our use by Charles Upton. The ad was loaned to him so that we could use it in the *CRYSTAL BALL*, by the Degenhart Glass Museum. We are most grateful and appreciate their generosity.

Be sure to visit their lovely Museum the next time you are in the Cambridge area. You'll be glad you took the time to do so.

Do any of our members know anything about a Fish Hatchery jar? If so, please write and let us know how it was used. Take note of the jar measurements - it was some big piece of glass! There was no hint of a date, so we have no idea as to when it was being produced.

Fish Hatchery Jar

*The Jar that is used in
most of the Government
and State Hatcheries*

Constructed of Glass with
a Metal Collar and Spout

We can furnish with or with-
out metal collar and spout if you
care to make your own tops

Measurements of Jar

Capacity to overflow 250 ounces
Total Height of Jar 19 $\frac{1}{4}$ in.
Diameter at Top 5 $\frac{3}{8}$ in.
Height of Jar and Metal Spout 20 $\frac{1}{2}$ in.
Diameter of Foot 5 $\frac{3}{8}$ in.
Diameter at Largest Point 6 $\frac{3}{8}$ in.

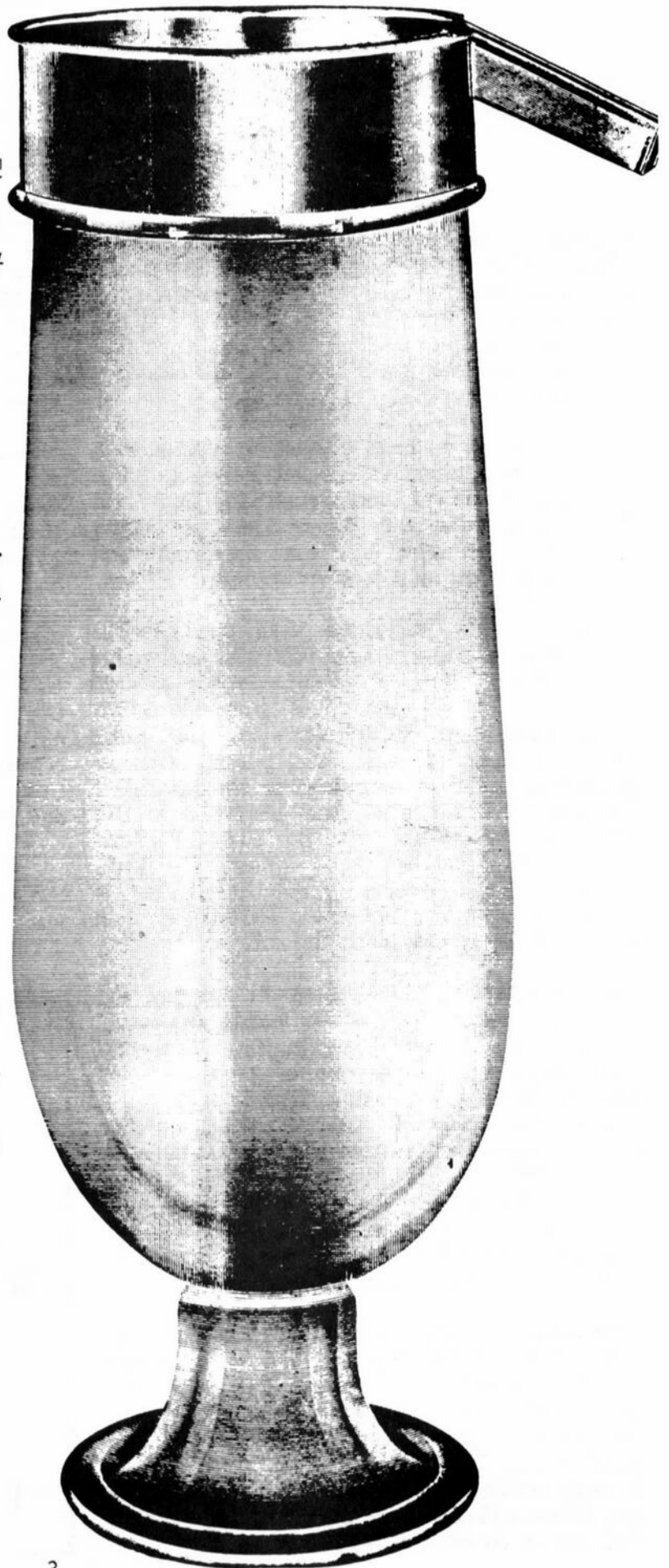
Jars will pack 1 $\frac{1}{2}$ dozen in 30x34 cask,
price of which is \$4.25 Net.

List Price \$100.00 per dozen complete
with the metal top and spout.

List Price \$84.00 per dozen without
metal top and spout.

(Write for Discounts)

*The
Cambridge Glass
Company
Cambridge, Ohio
U. S. A.*



PUNCH BOWLS and SETS 1940-58

PART III

by MARK NYE

Continuing with punch bowls available in 1940, we have the Virginian #478 12" punch bowl in crystal, holding seven quarts. With the bowl came the #488 5 oz. punch cup and the #170 16 1/2" plate, both from the Virginian line. To complete the set, Cambridge used our old friend, the #1402/111 ladle.

The cups were made in crystal or crystal with amber, royal blue or carmen handles. The Virginian line was introduced in 1938 and disappeared from the Cambridge line during the 1940s. No exact time span for production of the punch set has been established.

Simplest of the Cambridge punch bowls is the Pristine #476 and it was made in crystal only. The Pristine line was introduced around 1936-37 and some portion of it appeared in every subsequent catalog and price list until the final plant closing. The punch bowl, in production by 1940, remained in the line until the end. The punch set was composed of the bowl, 12 #P486 5 oz. cups, the P169 17" plate and the now familiar P485 ladle. The #485 ladle was still shown with the set as late as June 1949, but by September 1950, a chrome ladle was being used with the set.

Two decorations were used in conjunction with the Pristine punch set during the early 1940s. The first is D/Astoria (D/450), a gold band edge; and the second is D/1050 etched Laurel, gold encrusted. These sets were discontinued prior to 1949-50. During the reopen period the Pristine punch set was made plain; engraved Starlite; or with "Decorated Gold." The later is quoted from the 1956 price list and no other description was provided. The 1958 price list omitted any reference to decorated Pristine punch bowls.

Beginning in 1953 and continuing thru the final price list, the Pristine listings included a #15 6 oz. punch cup. It was never listed as a part of the punch set nor was its position in the Pristine price lists anywhere near the punch bowl. This cup has a "Hook" handle and is very similar to, if not identical with, the cup listed and shown as the Cambridge Square line tea or punch cup, #3797/15.

One of the two largest Cambridge punch bowls is the Martha #478 15" footed punch bowl with a capacity of ten quarts. Made in crystal only, this bowl was introduced in early 1939 and continued in the Cambridge line until the end of 1958. The underplate for the set is the Martha #129 18" cabaret plate or tray and this cup is the Martha #488 5 oz. punch cup. The ladle listed with the set in 1940 was the Tally-Ho #1402/111 ladle. The June 1949 catalog pictured the set with a #111 glass ladle (similar in shape to the #1402/111 but without the Tally-Ho design) but by September 1950 the ladle used was a chrome one.

Beginning with its introduction in 1939, the Martha punch set was available plain or etched Blossom Time, Chantilly, Wildflower and Rose Point until sometime during the 1940s. From 1949-50 until the final plant closing, it was produced plain only.

With the Martha set, we come to the end of the Punch bowls and sets from the 1940 catalog and price list. The next group to be covered are those introduced after 1940 and they number four: Cascade; Square; Caprice; and Jenny Lind.

EDITOR'S NOTE: This four-part series on Punch Sets will be concluded in the August CRYSTAL BALL.

VISIT YOUR MUSEUM of CAMBRIDGE GLASS

HOURS:

Wednesday thru Sunday - 12:00 to 4:00 P.M.

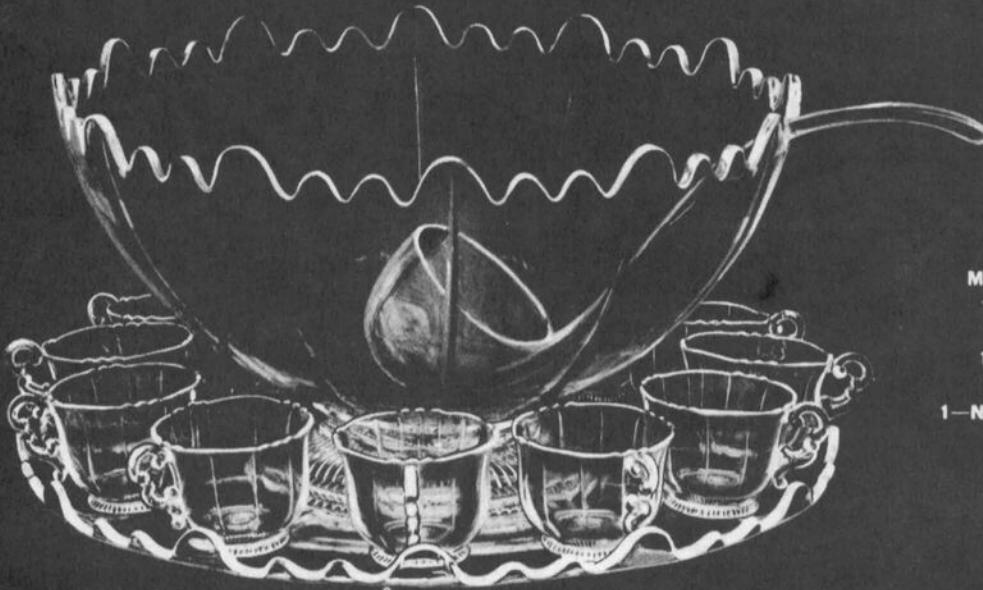
Closed Monday & Tuesday

**Closed November, December, January
and February**

Museum Telephone Number - 614-432-4245

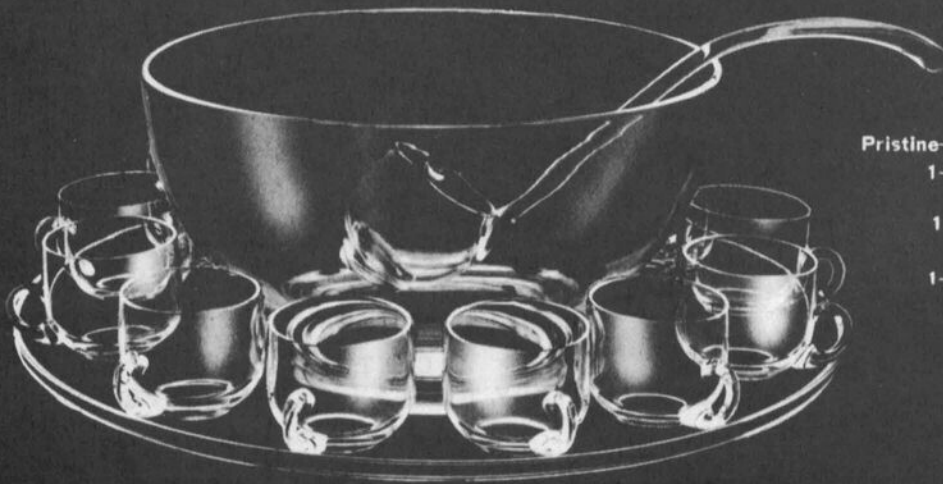
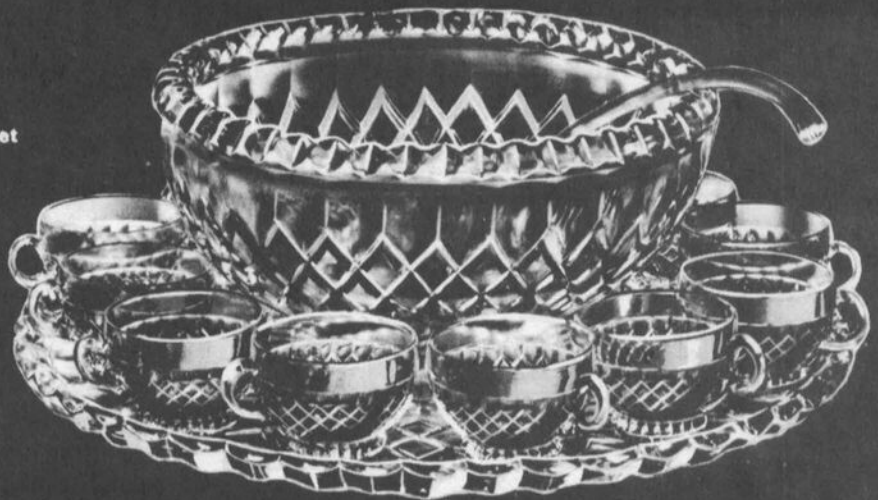


Punch Sets



Martha—15 pc. Punch Set
 1—No. 478—15 in. Bowl
 (10 qts.)
 12—No. 488—5 oz. Cups
 1—No. 111—Ladle
 1—No. 129—18 in. Tray or Plate

Virginian—15 pc. Tom & Jerry or Punch Set
 1—No. 478—12 in. Bowl
 (7 qts.)
 1—No. 170—16½ in. Plate
 1—No. 111—Ladle
 12—No. 488—5 oz. Cups



Pristine—15 pc. Tom & Jerry or Punch Set
 1—No. 476—11½ in. Bowl
 (5 qts.)
 12—No. 486—5 oz. Cups
 1—No. 485—Ladle
 1—No. 169—17 in. Plate

STUDY Club News

STUDY GROUP #5 - SOUTHERN CALIFORNIA "CALIFORNIA CAMBRIDGE COLLECTORS"

The California Cambridge Collectors held their meeting May 19th in the home of Jim and Joan McDowell. There were eight members and two guests, Rene Reza and Gerry Graves, present.

We held our annual silent auction. This is always an enjoyable event and each member went home with several bargains. We were also able to contribute \$400 to the National Cambridge Collectors.

Ron Rockafellow, as usual, shared a blockbuster at "Show & Tell." Would you believe an amethyst Japonica vase, marked on the bottom! It was found at a local antique mall with the description "Japanese Art Glass." Ron nearly fainted when he turned it over and saw the Cambridge mark. Ron also found a #3900 console bowl with Rosepoint etch for \$9.

Bill and Betty Losch shared a beautiful pair of gold etched Rosepoint crown tuscan cornucopia that they picked up way under price. They also found an amber Mount Vernon covered butter tub. Herb and Betty Wanser found some Rosepoint stemware and Chantilly cream and sugar and salt and pepper shakers with sterling trim.

Our next meeting will be in August at Beverly Hanson's.

submitted by Joan McDowell

STUDY GROUP #6 - NEW YORK STATE "THE FINGERLAKES"

The Fingerlakes Study Group met April 29th, at the home of Sandra O'Donnell in Rome, NY. There were six members and one guest present. We watched the slide presentation on Cambridge Candlesticks, with a good-natured projector operator provided in the form of the hostess' husband.

A good many examples were also on display for comparison and discussion. A unique "Show & Tell" preceded the slide show. On exhibit were: a Caprice 2 oz. tumbler, a nude stem with Ritz blue bowl, an Eagle bookend and a couple of items that prompted pro and con discussion as to whether or not they were Cambridge - a footed snail shaped vase

(bowl?) and a stacked set of ash trays that reversed to candlesticks on a spindle.

All in all, a lively show and good company added up to another grand day in the pursuit of Cambridge glass.

submitted by Sandra O'Donnell

STUDY GROUP #10 - LONG ISLAND, NY "THE TUSCAN CROWNS"

The Tuscan Crowns Study Group are looking for people who are interested in studying Cambridge Glass! Meetings are held in Western Suffolk, Long Island.

Please call Charles or Loretta at
516/589-9168.

thank you, Joyce Colangelo

STUDY GROUP #11 - ILLINOIS "THE CAMBRIDGE NUDES"

The April 21st meeting of the Cambridge Nudes was held at Mark and Jo Ann Schliesmann's home in Racine, Wisconsin, after a dinner at Giovanni's. I sometimes think The Nudes meetings are an elaborate scheme for everyone to get together and eat.

The subject was Cambridge etchings on colors. Some striking pieces were on display (some of which even changed ownership during the course of the evening). A few of the more noteworthy pieces were: a black lamp base with the Dancing Girl etch in gold (we all found over very quickly that the piece was NOT for sale); a willow blue ice bucket w/Imperial Hunt scene etch; Portia and Rosepoint gold encrusted etchings on crown tuscan vases; and an amber pitcher with Cleo etching. Other etchings represented were: Wildflower; Apple Blossom; Gloria; #731; and #739. In addition to the above colors, light emerald, Dianthus pink and gold krystal were also displayed.

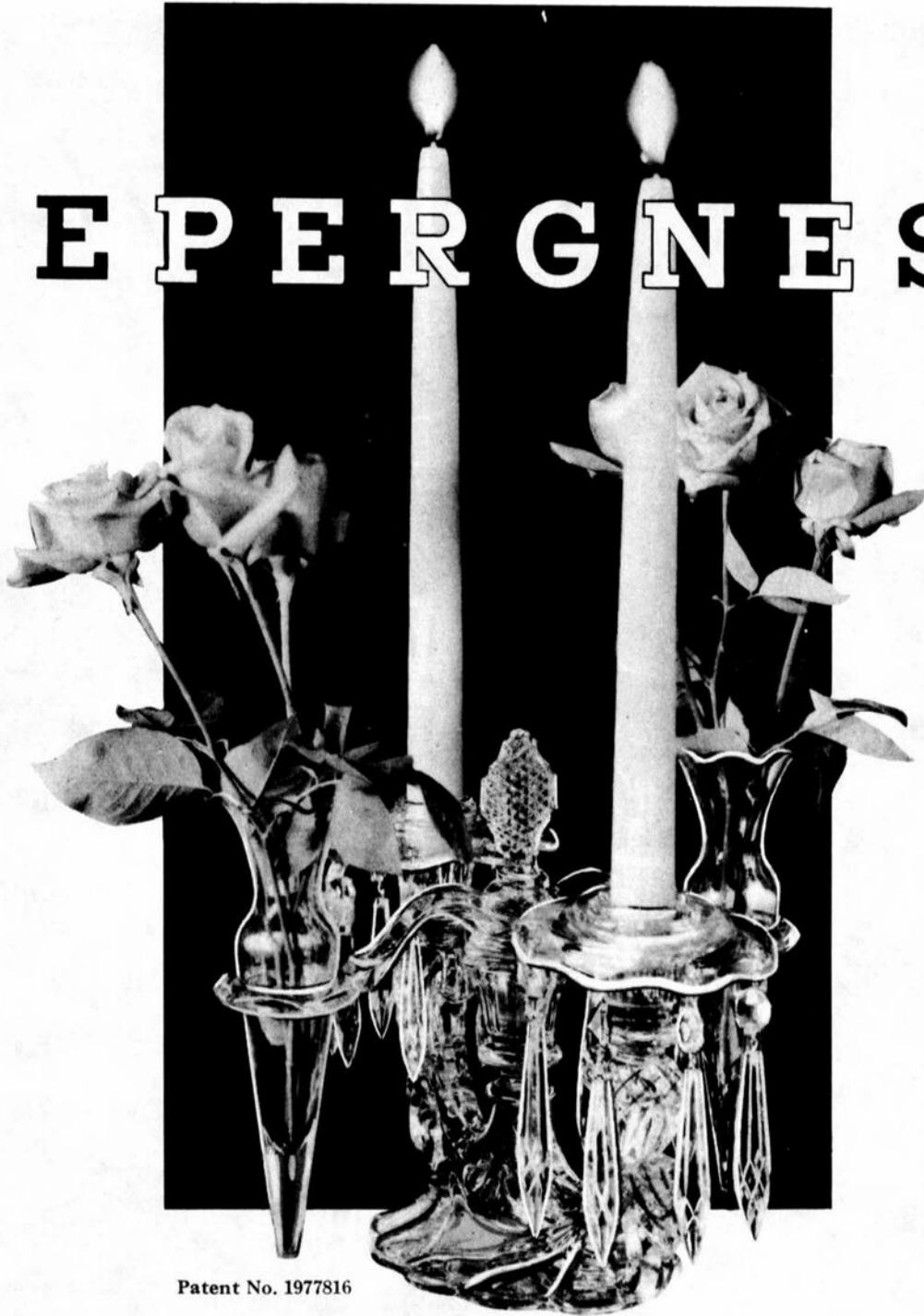
The Nudes plan to attend the 1984 NCC Convention en masse, but not in the NUDE!

submitted by Rose Curnutt

CENTRAL TEXAS STUDY GROUP INTEREST EXPRESSED

Cambridge Collectors of Central Texas! Let's get together. Contact Barbara Stock, Route #3, Box 66R, Lockhart, TX 78644.

❖ **E P E R G N E S** ❖



Patent No. 1977816

THE CAMBRIDGE GLASS COMPANY
CAMBRIDGE, OHIO





THE CAMBRIDGE GLASS COMPANY

See Label On Each Piece



1269-1438
w/bobeche & prisms
\$77.50 Doz.



1269-1435
w/bobeche & prisms
\$77.50 Doz.



3-1435
\$46.50 Doz.



3-1438
\$46.50 Doz.



1357-1435
\$70.00 Doz.



1358-1438
w/bobeche & prisms
\$112.50 Doz.



1357-1438
\$70.00 Doz.



1358-1435
w/bobeche & prisms
\$112.50 Doz.



36-1438
w/bobeche & prisms
\$77.50 Doz.



36-1435
w/bobeche & prisms
\$77.50 Doz.



35-1438
\$45.80 Doz.



35-1435
\$45.80 Doz.

CAMBRIDGE, OHIO - - - U. S. A.



1402/81-1434
w/bobeche & prisms
\$62.00 Doz.



1402/81-1437
w/bobeche & prisms
\$62.00 Doz.



1402/80-1434
\$39.00 Doz.



1402/80-1437
\$39.00 Doz.



3011-1435
w/bobeche & prisms
\$86.25 Doz.



3011-1438
w/bobeche & prisms
\$86.25 Doz.



3011-1435
\$54.75 Doz.

3011-1438
\$54.75 Doz.



1272-1435
w/bobeche & prisms
\$77.50 Doz.



1272-1438
\$50.60 Doz.



1272-1438
w/bobeche & prisms
\$77.50 Doz.



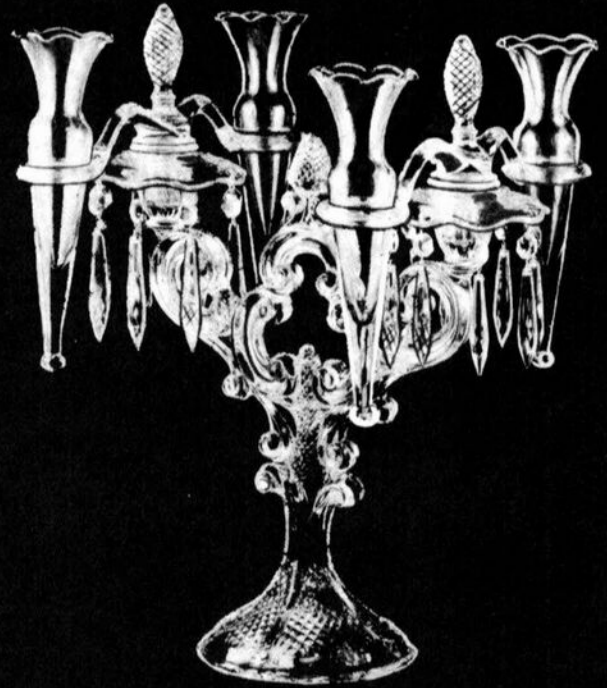
1272-1435
\$50.60 Doz.



THE CAMBRIDGE GLASS COMPANY



38-1438
w/bobeche & prisms
\$147.00 Doz.



38-1435
w/bobeche & prisms
\$147.00 Doz.



38-1438
\$105.00 Doz.



38-1435
\$105.00 Doz.

N.C.C. COLLECTOR'S CUP PLATES

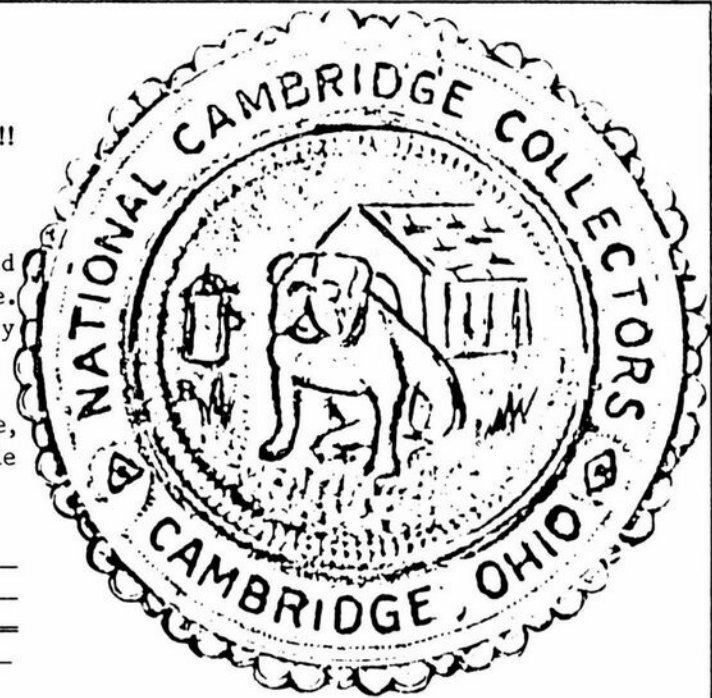
FOURTH OF THE SERIES!! JUST ARRIVED!!

A M E T H Y S T

This fourth cup plate should be in our hands and ready for delivery by the time you read this notice. Quantity has not been determined as yet, but they will probably number 200 or less.

Orders will again be processed on a first-come, first-served basis, with no limit on quantities while they last.

Please send ___ Cup Plates at \$7.00 each	\$ _____
Ohio residents add \$.42 sales tax per plate	_____
Add \$1.00 postage & handling for each plate	_____
TOTAL	\$ _____



SEND TO:(Please print) _____
 Address: _____

Make your check or Money Order payable to: National Cambridge Collectors, Inc.
 Mail to: National Cambridge Collectors, Inc., P.O. Box 416, Cambridge, Ohio 43725.
 (No need to cut up your CRYSTAL BALL — just send above info on a plain sheet of paper)

STAGE COACH ANTIQUE MALL

(formerly White Pillars Antiques)

7525 East Pike
Norwich, OH 43767
614/872-3720

MANY DEALERS. . .

PLENTY OF PARKING. . .

WIDE SELECTION OF GLASS

AND POTTERY'

FURNITURE AND

GENERAL LINE!

BUY and SELL

OPEN YEAR ROUND

Weekdays - 10 AM - 5:30 PM

Sunday - 12 noon - 5:30 PM

Summer Evening Hours - by Chance!

Located 9 miles E. of Zanesville, OH, on I-70 to Norwich Exit No. 164 - then 1/2 mile W. on Route 40.

— Classified —

BUYING: CAPRICE Moonlight or Rosepoint by Cambridge; Rose or Orchid by Heisey; and American, June, Fairfax, Versailles, Trojan, etc., by Fostoria. Nadine Pankow, 207 South Oakwood, Willow Springs, IL 60480. 312/839-5231.

WANTED: CAMBRIDGE Nude stem champagne glasses to complete set. Frosted female figure is approximately 4 1/2" (medium size nude). Please contact Samuel Epstein, MD, 2784 So. Ocean Blvd., Palm Beach, FL 33480.

**THE CAMBRIDGE LINE
March 15, 1956 Price List**

The next three pages contain the final pages of the March 15, 1956 Price List. This 24 page price list has been printed as space permitted in the CRYSTAL BALL over the past two years. Courtesy of Peg and Dale Gotschall.

Pages from this price list can be found in the following issues of the CRYSTAL BALL: July, September and December 1982; January, February, March, April and December 1983; and January, February, and July 1984.

CAMBRIDGE, OHIO

LYNBROOK (1070) (cont'd)

		Price Per Doz.	Price Each
1498	8 in. 3 part Relish	93.00	7.75
P. 247	11 in. Celery	81.00	6.75
P. 454	8 in. Crescent Salad Plate	51.00	4.25

SIX ITEM ASSORTMENT

P. 54	6 in. Low Comport	\$60.00	\$5.00
P. 56	8 in. Ftd. Plate	60.00	5.00
P. 253	Ind. Sugar & Cream	60.00	5.00
1180	5½ in. 2 Hdl. Bonbon	60.00	5.00
1497	6 in. 2 part Relish	60.00	5.00
6004	8 in. Ftd. Vase	60.00	5.00

OLD ENGLISH (#10)

1953	Goblet	\$66.00	\$5.50
1953	Sherbet	66.00	5.50
1953	12 oz. Ftd. Tumbler	66.00	5.50
1953	5 oz. Ftd. Tumbler	66.00	5.50
1953	Cocktail	66.00	5.50
556	8 in. Salad Plate	66.00	5.50

OLD MASTER

1953	Goblet	\$105.60	\$8.80
1953	Sherbet	105.60	8.80
1953	12 oz. Ftd. Tumbler	105.60	8.80
1953	5 oz. Ftd. Tumbler	105.60	8.80
1953	Cocktail	105.60	8.80
556	8 in. Salad Plate	105.60	8.80

ORION (#1P)

3790	Goblet	33.00	2.75
3790	Sherbet	33.00	2.75
3790	12 oz. Ftd. Tumbler	33.00	2.75
3790	5 oz. Ftd. Tumbler	33.00	2.75
3790	Cocktail	33.00	2.75
3790	Wine	33.00	2.75
3790	Claret	33.00	2.75
3790	Cordial	33.00	2.75
556	8 in. Salad Plate	51.00	4.25

RONDO (1081)

7966/2	10 oz. Tall Goblet	\$33.00	\$2.75
7966	Low Goblet	33.00	2.75
7966	Low Sherbet	33.00	2.75
7966	Low Cocktail	33.00	2.75
7966	Low Wine	33.00	2.75
7966	Low Cordial	33.00	2.75
7966	5 oz. Fruit Juice or Claret	33.00	2.75
555	7½ in. Salad Plate	33.00	2.75
P. 101	32 oz. Cocktail Shaker	132.00	11.00
P. 166	13½ in. Cabaret Plate	156.00	13.00
P. 247	11½ in. Celery	66.00	5.50
P. 254	Sugar & Cream	72.00	6.00
P. 290	6 oz. Oil, g.s. (No Hdl.)	51.00	4.25
P. 360	Salt & Pepper w/chrome tops.....	48.00	4.00
P. 384	11 in. Oval Bowl	120.00	10.00
P. 426	8 in. Salad Bowl	99.00	8.25
P. 427	10 in. Bowl	132.00	11.00
P. 533	5½ in. Comport	60.00	5.00
P. 572	6 in. Vase	66.00	5.50

RONDO (1081) (cont'd)

		Price Per Doz.	Price Each
P. 671	6 in. Ice Tub	72.00	6.00
P. 1491	5½ in. 4 pc. Mayonnaise Set	108.00	9.00
P. 1498	8 in. 3 part Relish	78.00	6.50
P. 1532	3 pc. Mayonnaise Set	72.00	6.00
278	11 in. Ftd. Vase	112.20	9.35
628	3½ in. Candlestick	36.00	3.00
3700	5 in. Blown Comport	84.00	7.00
6004	8 in. Ftd. Vase	60.00	5.00
3900/114	32 oz. Martini Jug	72.00	6.00
3900/115	76 oz. Jug	120.00	10.00
497	12 oz. Hiball	27.00	2.25
321	9 oz. O. F. Cocktail	27.00	2.25

ROSES (#2P)

A-56	Goblet	\$33.00	\$2.75
A-56	Sherbet	33.00	2.75
A-56	12 oz. Ftd. Ice Tea	33.00	2.75
A-56	5 oz. Ftd. Tumbler	33.00	2.75
A-56	Cocktail	33.00	2.75
A-56	Wine	33.00	2.75
A-56	Claret	33.00	2.75
A-56	Cordial	33.00	2.75
556	8 in. Salad Plate	39.00	3.25

ROXBURY (1030)

3775	10 oz. Goblet	\$33.00	\$2.75
3775	6 oz. Tall Sherbet	33.00	2.75
3775	6 oz. Low Sherbet	33.00	2.75
3775	3 oz. Cocktail	33.00	2.75
3775	4½ oz. Oyster Cocktail	33.00	2.75
3775	4½ oz. Claret	33.00	2.75
3775	1 oz. Cordial	33.00	2.75
3775	2½ oz. Wine	33.00	2.75
3775	12 oz. Ftd. Ice Tea	33.00	2.75
3775	5 oz. Ftd. Tumbler	33.00	2.75
555	7½ in. Salad Plate	42.00	3.50
968	2 pc. Cocktail Icer, Ftd.	51.00	4.25

STAR (1016)

3725	9 oz. Goblet	\$46.20	\$3.85
3725	7 oz. Tall Sherbet	46.20	3.85
3725	7 oz. Low Sherbet	46.20	3.85
3725	2½ oz. Cocktail	46.20	3.85
3725	2 ½ oz. Wine	46.20	3.85
3725	4½ oz. Claret	46.20	3.85
3725	4½ oz. Oyster Cocktail	46.20	3.85
3725	1 oz. Cordial	46.20	3.85
3725	12 oz. Ftd. Ice Tea	46.20	3.85
3725	5 oz. Ftd. Tumbler	46.20	3.85
555	7½ in. Salad Plate	51.00	4.25

STARBURST (4P)

3790	Goblet	\$30.00	\$2.50
3790	Sherbet	30.00	2.50
3790	12 oz. Ftd. Tumbler	30.00	2.50
3790	5 oz. Ftd. Tumbler	30.00	2.50
3790	Cocktail	30.00	2.50
556	8 in. Salad Plate	39.00	3.25

THE CAMBRIDGE GLASS COMPANY

STARLITE (#10P)

		Price Per Doz.	Price Each
3790	Goblet	\$36.00	\$3.00
3790	Sherbet	36.00	3.00
3790	12 oz. Ftd. Tumbler	36.00	3.00
3790	5 oz. Ftd. Tumbler	36.00	3.00
3790	Cocktail	36.00	3.00
3790	Claret	36.00	3.00
3790	Wine	36.00	3.00
3790	Cordial	36.00	3.00
556	8 in. Salad Plate	48.00	4.00
1956/105	Salt & Pepper	60.00	5.00
1517	6 in. Vase	39.00	3.25
1518	8 in. Vase	48.00	4.00
1519	10 in. Vase	60.00	5.00
*1528	10 in. Vase	66.00	5.50
*1529	Decanter	78.00	6.50
(also made in Pink, Pistachio, Moonlight Blue, Mandarin Gold)			
3750	Dinner Bell	36.00	3.00

TEMPO (1029)

3700	9 oz. Goblet	\$33.00	\$2.75
3700	6 oz. Tall Sherbet	33.00	2.75
3700	6 oz. Low Sherbet	33.00	2.75
3700	3 oz. Cocktail	33.00	2.75
3700	2½ oz. Wine	33.00	2.75
3700	4½ oz. Claret	33.00	2.75
3700	1 oz. Cordial	33.00	2.75
3700	4½ oz. Oyster Cocktail	33.00	2.75
3700	12 oz. Ftd. Ice Tea	33.00	2.75
3700	5 oz. Ftd. Tumbler	33.00	2.75
968	2 pc. Cocktail Icer, Ftd.	51.00	4.25
555	7½ in. Salad Plate	39.00	3.25

ENGRAVED (1064) TEMPO OR ROXBURY

3900/35	13½ in. 2 Hdl. Cake Plate	\$93.00	\$7.75
3900/41	Sugar & Cream	87.00	7.25
3900/62	12 in. 4 Ftd. Bowl, flared	120.00	10.00
3900/72	6 in. 2-lite Candlestick	66.00	5.50
3900/111	4 pc. Mayonnaise Set	108.00	9.00
3900/125	8 in. 3 part Celery & Relish	78.00	6.50
3900/126	12 in. 3 part Celery & Relish	108.00	9.00
3900/129	3 pc. Mayonnaise Set	99.00	8.25
3900/130	7 in. 2 Hdl. Ftd. Bonbon	60.00	5.00
3900/131	8 in. 2 Hdl. Ftd. Bonbon Plate.....	60.00	5.00
3900/136	5½ in. Comport	66.00	5.50
3900/137	6 in. Comport	69.00	5.75
3900/137/445	2 pc. Mayonnaise Set	75.00	6.25
3900/138	Candy Box and Cover	102.00	8.50
3900/166	14 in. Plate, r.e.	126.00	10.50
274	10 in. Ftd. Bud Vase	60.00	5.00
3121	5½ in. Blown Comport	99.00	8.25
3900/115	76 oz. Jug—Engraved 1064.....	99.00	8.25

SIX ITEM ASSORTMENT

P. 54	Low Comport	\$60.00	\$5.00
P. 56	8 in. Ftd. Plate	60.00	5.00
P. 253	Ind. Sugar & Cream	60.00	5.00
1180	5½ in. 2 Hdl. Bonbon	60.00	5.00
1497	6 in. 2 part Relish	60.00	5.00
6004	8 in. Ftd. Vase	60.00	5.00

TOMORROW (#8P)

		Price Per Doz.	Price Each
A56	Goblet	\$30.00	\$2.50
A56	Sherbet	30.00	2.50
A56	12 oz. Ftd. Tumbler	30.00	2.50
A56	5 oz. Ftd. Tumbler	30.00	2.50
A56	Cocktail	30.00	2.50
A56	Wine	30.00	2.50
A56	Cordial	30.00	2.50
556	8 in. Salad Plate	36.00	3.00

WEDDING RINGS

7966	Low Goblet	\$33.00	\$2.75
7966	Low Sherbet	33.00	2.75
7966	Low Wine	33.00	2.75
7966	Low Cocktail	33.00	2.75
7966	5 oz. Ftd. Juice	33.00	2.75
556	8 in. Salad Plate	33.00	2.75
P. 101	Cocktail Shaker, 32 oz.	132.00	11.00
P. 166	13½ in. Cabaret Plate	156.00	13.00
P. 254	Sugar & Cream (doz. pair)	66.00	5.50
P. 360	Salt & Pepper (doz. pair) w/chrome tops	48.00	4.00
P. 533	5½ in. Comport	60.00	5.00
P. 671	6 in. Ice Tub	72.00	6.00
P. 1498	8 in. 3 part Relish	78.00	6.50
P. 1532	3 pc. Mayonnaise Set	72.00	6.00
3900/114	32 oz. Martini Jug	72.00	6.00
P. 290	6 oz. Oil, g.s. (no hdl.)	51.00	4.25
P. 427	10-inch Bowl	132.00	11.00
497	14 oz. Hi Ball	27.00	2.25
321	9 oz. O. F. Cocktail	27.00	2.25
*1528	Vase	66.00	5.50
*1529	Decanter or Cologne	78.00	6.50

*Also made in Pink, Pistachio, Moonlight Blue,
and Mandarin Gold

MATCHED BARSEMBLE

Made in Crystal

PLAIN

497	14 oz. Hiball, SHAM	\$13.20	\$1.10
497	12 oz. Hiball, SHAM	13.20	1.10
321	12 oz. O. F. Cocktail	19.80	1.65
321	9 oz. O. F. Cocktail	13.20	1.10
321	1½ oz. Whiskey, SHAM	7.20	.60
7801	4 oz. Cocktail	16.80	1.40
7801	5 oz. Whiskey Sour	16.80	1.40
7801	1 oz. Pousse Cafe	16.80	1.40
P. 92	26 oz. Decanter (Stopper Polished in)	108.00	9.00
P. 101	Cocktail Shaker	84.00	7.00
P. 671	Ice Tub	39.00	3.25
3900/114	32 oz. Martini Mixer	39.00	3.25

ENGRAVED LATTICE (#1)

ENGRAVED SWIRL (#23)

497	14 oz. Hiball	\$27.00	\$2.25
497	12 oz. Hiball	27.00	2.25
321	12 oz. O. F. Cocktail	30.00	2.50
321	9 oz. O. F. Cocktail	27.00	2.25

CAMBRIDGE, OHIO

ENGRAVED LATTICE (#1) SWIRL (#23) (cont'd)

		Price Per Doz.	Price Each
321	1½ oz. Whiskey	18.00	1.50
7801	4 oz. Cocktail	27.00	2.25
7801	5 oz. Whiskey Sour	27.00	2.25
7801	1 oz. Pousse Cafe	27.00	2.25
P. 92	26 oz. Decanter (stopper polished in)	144.00	12.00
P. 101	Cocktail Shaker	120.00	10.00
P. 671	Ice Tub	69.00	5.75
3900/114	32 oz. Martini Mixer	69.00	5.75

ENGRAVED STAR (#4)

ENGRAVED FLEUR-DE-LIS (#6)

		Price Per Doz.	Price Each
497	14 oz. Hiball	\$30.00	\$2.50
497	12 oz. Hiball	30.00	2.50
321	12 oz. O. F. Cocktail	36.00	3.00
321	9 oz. O. F. Cocktail	30.00	2.50
321	1 ½ oz. Whiskey	24.00	2.00
7801	4 oz. Cocktail	30.00	2.50
7801	5 oz. Whiskey Sour	30.00	2.50
7801	1 oz. Pousse Cafe	30.00	2.50
P. 92	26 oz. Decanter (stopper polished in)	171.00	14.25
P. 101	Cocktail Shaker	144.00	12.00
P. 671	Ice Tub	96.00	8.00
3900/114	32 oz. Martini Mixer	96.00	8.00

INACTIVE LISTING

To further improve our service to our customers, we have inaugurated another CAMBRIDGE GLASS *first* by providing *inactive* listings. This means to you that you can assure your customers that they will *always* be able to obtain replacements for their fine CAMBRIDGE glassware patterns. In the regular course of business we shall accumulate your replacement orders over a period of time so that we may ship such orders at least twice a year. We shall be glad to quote you prices on inactive listings upon request. However, in view of the increased cost of producing small quantities of glass, you may reasonably expect prices of inactive patterns to run 20% to 25% higher than on similar active items. Please remember that *inactive* DOES NOT MEAN *discontinued*.

PATTERNS, PLAIN

400	Line—Ball Bottom	3130	Cordelia
1067	Stemware, Not Optic	3116	Corsage
1953	Line—"Cathedral"	3776	Cortland
3122	Stemware, Optic	7966	Delhi
3130	Stemware, Optic	3778	Deerfield
3776	Stemware—"Shelburne"	3776	Dover
3778	Stemware, Not Optic	3700	Empire
3796	Line—"Cambridge Circle"	1067	Empress (1091)
7967	Stemware—"Melody"	3750	Euclid
Pristine (Old)		3778	Fleurette
		3750	Fuchsia
		1401	Garland
		3139	Granada
		3750	Hanover
		3750	Ivy
		1953	Joan of Arc (1082)
		3139	Juliana
		3121	Kenmore
		Pristine	Killarney
		3139	King George
		3778	Larchmont
		3139	Laurel Wreath
		7966	Lexington
		3790	Lily of the Valley (1069)
		3116	Lucia (824)
		1067	Lyric (1094)
		3700	Manor
		3776	Maryland
		3139	Maryland
		3750	Minton Wreath
		3776	Minuet
		3790	Miss Flowers (10-P)
		3700	Montrose (1004)
		Pristine	Neo Classic

3600	Petite
	Pristine Pines
3725	Plaza
3700	Plymouth
1401	Priscilla
3130	Ravenna
3139	Regent
1937	Saturn (1088)
3139	Sicily
1953	Silver Wheat (1085)
3116	Sonora
1937	Southwind (1090)
3700	Strathmore
1067	Sylvan
	Regency Symphony
3790	Tropical (1083)
3500	Victory Wreath
3130	Wedding Rose

GOLD DECORATIONS

3121	D/1041
3500	D/1041
3121	D/1045
3139	Wedding Band D/460
3500	D/1018
3121	D/1051
3500	D/1051
3600	D/1060
3600	D/1061
3750	D/460
7966	D/460
7966	Golden Wheat
7966	Talisman Rose D/1063
7966	Woodlily
	Pristine D/450
	Pristine D/1050

ROCK CRYSTAL ENGRAVED

3725	1087
1953	Ambassador (1086)
3130	Auburn
3790	Autumn (1092)
3725	Bijou (1011)
3116	Candlelight (897)
	Regency Celestial
3700	Concord

DEALERS



DIRECTORY

NOTE: When writing to the Dealers listed here, please enclose a SASE

<p>EVELYN M. ALLEN 135 Cynthia Street Heath, Ohio 43055 Mail Order & Shows 614-522-1635 SPECIALIZING IN CAMBRIDGE GLASS!</p>	<p>BENICIA ANTIQUE SHOP 305 First Street Benicia, California 94510 OPEN 11 AM - 5 PM Closed Monday Z. E. LOPES 707-745-0978 VISIT HISTORIC BENICIA and its 28 shops Off Interstate #80 North of San Francisco</p>	<p>CHARLES MIKULIK Box 416 Elizabeth, N.J. 07207 — COLLECTOR — Always paying good prices for CAMBRIDGE CAPRICE in all colors 201-688-1144 CARRY MOST TYPES OF ANTIQUES</p>
<p>BLUE BONNET SHOPPE at The Main Place 102 West Mistletoe at Main San Antonio, TX 78212.....512/736-4900 Antiques, Crystal, Collectibles! Open 7 days!</p>	<p>ANDREJCAK'S ANTIQUES 14533 Bayes Ave Lakewood, Ohio 44107 Joe & Karen Andrejak 216-226-3417 SHOWS ONLY — CAMBRIDGE — FENTON — CHINA</p>	<p>HENDERSON'S ANTIQUES 303 Guilford Ave., Woodsfield, OH 43793 Mary & Wilbur Phone: 614 472-1133 SPECIALIZING IN CAMBRIDGE GLASS Shows, Mail & Stagecoach Antique Mall</p>
<p>BERKELEY ANTIQUES 69 Berkeley St Boston, MA 02116 George or Frank 617-426-1048 CAMBRIDGE, HEISEY, GENERAL LINE</p>	<p>THE HITCHING POST 7467 S. R. 88 Ravenna, OH 44266 Ph. 216-296-3686 D. McDaniel CAMBRIDGE — HEISEY — GENERAL LINE</p>	<p>GLASS RAINBOW of California P.O. Box 127, Elk Grove, CA 95624 Neil & Ervina McCartney Hours: 9am-4pm & 7-9pm 916/685-5485 BY APPOINTMENTS & SHOWS!</p>
<p>D & D ANTIQUES Columbus, Ohio DICK SLIFKO SHOWS ONLY</p>	<p>GEORGE HOFFMAN ANTIQUES 129 South 4th Street Newark, Ohio 43055 614-345-8021</p>	<p>PEG AND DALE GOTSCHALL 833 N. 6th Street, Cambridge, OH 43725 ANTIQUES and COLLECTABLES including quality crystal and colored glass Hours by Chance or Appointment 614/432-5529</p>
<p>THE GLASS CUPBOARD 39 Shire Oaks Drive Pittsford, New York 14534 Marcia Ellis 716-586-7596 CAMBRIDGE ONLY INQUIRIES INVITED</p>	<p>J & L GLASS Laws Antique Center, Manassas, VA 22111 and 10629 Main St. Fairfax, VA 22030 703/273-8579 BUY & SELL Depression, Cambridge, Heisey, Duncan & Fostoria Glass</p>	<p>1886 HOUSE East Schodack, N.Y. 12063 MAIL and SHOWS Laurie Cruise 518-477-5895 CAMBRIDGE - NORITAKE - AZALEA - D.G.</p>
<p>THE ANTIQUERY 42 E. Main St., St. Rt. 40 New Concord, Ohio 43762 Ph. 614-432-4483 Richard Bennett Specializing in Cambridge Glass</p>	<p>PLATE MATES 3904 Cleveland Place Metairie, LA 70003 Kathryne L. Creamer 504/887-0631 BUY or SELL — DISCONTINUED CHINA & CRYSTAL</p>	<p>SALT FORK ANTIQUES 10 miles North of Cambridge Exit 54 off I-77, then 1/2 mile East Hours: Tuesday thru Saturday 12 noon - 5 p.m. 614/432-2020 614/439-4039</p>
<p>joyce's antiques Bought and Sold Specializing in HEISEY • CAMBRIDGE • VERLYS • AMERICAN GLASS P O Box 114 Albertson N Y 11507 (516) 499-3396</p>	<p>AL STEELE Westerville, Ohio 614-882-6483 or 614-882-7124 Mail Orders and Shows Only HEISEY — CAMBRIDGE — PATTERN GLASS</p>	<p>BETTY'S ICE HOUSE ANTIQUES 517 Fulton Street Wausau, Wisconsin 54401 Quality Antiques Cambridge - Heisey - General Line Betty R. Puestow Hours 1-5 Daily 715-848-7145 or by appointment</p>
<p>THE GLASS MENAGERIE Unit 4, Plaza 20, Route 50 North Easton, MD 21601 Barbara & Bill Danels 301/822-8794 SPECIALIZING IN GLASSWARE OF THE DEPRESSION ERA</p>	<p>SHIRLEY S. LADOUCEUR Antiques and Collectibles Specializing in Cambridge Glass BY APPOINTMENT 7597 Daphne Drive 315-458-5297 No. Syracuse, NY 13212</p>	<p>GREEN ACRES FARM Antiques, Crystal Glass & Collectibles Sat. & Sun. 1-7 PM (614) 927-1882 2678 Hazelton Etna Road (State Route 310 North) Pataskala, Ohio 43062</p>

6TH ANNUAL



SHOW & SALE

GLASS - ANTIQUES - COLLECTIBLES

JULY 20-21-22

ALADDIN TEMPLE
1-270 AT 3850 STELZER RD. / MORSE RD. EXIT
COLUMBUS, OHIO

60 Quality Glass & Antique
Dealers from 10 states



Displays by National Glass Clubs



Free Lectures 11 a.m. Sat. & Sun.



Pay Once — Good all Weekend:

Friday 'Early Bird Buying' — 7 p.m. - 10 p.m.

Admission: \$3.00 Each



Sat. 12-9 p.m. Sun. 12-5 p.m.

Admission: \$2.00 Each

Manager — Barbara Shaeffer (614) 374-2719

VISIT YOUR MUSEUM

JULY

1984

REMINDER

NEW COLOR BOOK HAS ARRIVED!
120 pages - 60 color plates
(see details on page 2)

AMETHYST CUP PLATE
4th in Series!
(order blank is on page 11)

**WATCH FOR YOUR AUGUST 1984
CRYSTAL BALL!**

It will contain complete information on
the N.C.C. August Quarterly Meeting
and Picnic. It should be great fun, and
an event you won't want to miss.

Included also will be complete coverage
of "Convention '84.

National Cambridge Collectors, Inc.
P. O. Box 416 Cambridge, Ohio 43725

FIRST-CLASS MAIL
U.S. POSTAGE
PAID

Cambridge Ohio
43725
Permit No. 1

FIRST CLASS MAIL

