



Cambridge Crystal Ball

Published monthly by the National Cambridge Collectors, Inc.
to encourage and report the discovery of the elegant and boundless product
of the Cambridge Glass Company of Cambridge, Ohio

Issue No. 168

April 1987

THOUGHTS FROM YOUR PRESIDENT

The Auction was a great success again this year. A good turnout and as usual the prices were a little weird. That is to say, some of the better items were not up-to-par so far as price was concerned; and some of the lesser items brought rather high prices. I don't know that this is really unusual though, it seems to happen every year. Overall it averages out to the fact that prices are getting higher.

Convention '87 is rapidly creeping up on us. Preparations will start to accelerate now, so that we may bring you another fine Convention. Mark Nye has most of the preparatory work taken care of, but there are always a lot of loose ends to be tied up at almost the last moment. Don't forget that this year it will actually be a four day Convention. Mark will be keeping you informed here in the CRYSTAL BALL.

I, however, will remind you that there will be a "Mini-Auction" again on Friday evening during the Get-Acquainted Party. PLEASE be thinking about something that you may wish to donate for this money raiser. If for some reason you cannot attend, you can send your donation through the club post office box or leave it at the Museum. We would appreciate anything that you may

Membership Renewal Notice

This is your **last** issue of the *Crystal Ball*—if the date on your address label reads **4-87**.
Please renew now!



want to give.

The Museum is now open for the season and we encourage you to stop by and view the displays. There are many new items on display this year. Also, the favors that we were selling through the CRYSTAL BALL during the Christmas holidays will be on sale at the Museum, so long as the supply lasts.

An added expense we will have this year is the cost of having our books audited. In the past, we have been fortunate in having this done free of charge. Dave and Sue Rankin donated their services to this purpose for nine years, from 1974 thru 1982. Dennis Snyder took over in 1983 and has donated his services for the past four years. Dennis will probably be moving from the area soon and can no longer accommodate us. A special "THANKS" to these fine folks who have spent countless hours of their time for the benefit of our club. The Board approved the recommendation of Treasurer Bill Smith to seek an Auditing firm that would do this for us at the best possible price.

Also at the Board meeting funds were approved for 1987 for the purpose of acquiring glass for the Museum; for improvements to the buildings, namely the pouring of a slab of concrete at the storage building; and for more display cases for the Museum proper.

Looking forward to seeing many of you in
June. WILLARD

HAVE A HAPPY EASTER!

Cambridge Crystal Ball

Official publication of National Cambridge Collectors, Inc., a non-profit corporation with tax exempt status. Published once a month for the benefit of its members.

Membership is available for individual members at \$13 per year and additional members (12 years of age and residing in household) at \$3 each. All members have voting rights, but only one *Crystal Ball* will be mailed per household.

Back issues of the *Crystal Ball* are available (beginning with Issue No. 1, May 1973) for members only. Cost: 60 cents each or 12 issues for \$7.

1986-87 Officers & Committee Chairpersons

President	Willard P. Kolb
Vice-President	Mark A. Nye
Secretary	Janice Y. Hughes
Treasurer	William C. Smith
Sergeant-at-Arms	Marybelle Moorehead
Budget & Finance	David B. Rankin
By-Laws	Ekkehart A. Vimmer
Convention	Mark A. Nye
Membership	Phyllis D. Smith
Museum	Billy F. Harbaugh
Program & Entertainment	Marlene K. Snyder
Project	Willard P. Kolb
Public Relations	William C. & Phyllis D. Smith
Publicity	Joseph Andrejcek
Study Group Advisor	Phyllis D. Smith
1987 Auction	Lynn M. Welker
1987 Antique Show	Joy R. McFadden
1987 Flea Market	Marybelle Moorehead
Crystal Ball Editor	Phyllis D. Smith

Classified Advertising Rates

5 cents per word \$1.00 minimum
We cannot mix type size in classified advertisements. Abbreviations and initials will count as words. Payment in full **must** accompany all ads.

Display Advertising Rates

(Camera-ready ads preferred)	Members	Non-Members
1/8 page (9 items)	\$ 4.00	\$ 6.00
1/4 page (20 items)	7.00	10.00
1/2 page (20 items)	12.00	18.00
3/4 page	17.00	25.00
Full page (50 items)	22.00	33.00

Dealers Directory

Five-line maximum \$12.00 for 12 months

Cambridge *Crystal Ball* assumes no responsibility for items advertised and will not be responsible for errors in price, description or other information.

Advertising copy, articles, club news and notices must be in our hands by the 10th of each month to assure publication in our next issue.

Paid advertisements containing reproductions or new glass will not knowingly be accepted for publication.

Opinions or information stated in any signed article or letter printed in the *Crystal Ball* are those of the authors and may or may not agree with National Cambridge Collectors, Inc. The Editor reserves the right to refuse and to edit any material submitted for publication so as to conform with the editorial style of the *Crystal Ball*.

Please Address All Correspondence to:

National Cambridge Collectors, Inc.
P.O. Box 416 Cambridge, Ohio 43725
President — Willard Kolb, 614/695-0695
Secretary — Janice Hughes, 614/432-7823
Editor — Phyllis Smith, 513/323-3888

NCC Museum of Cambridge Glass is located on U.S. Route 40, one-eighth mile east of I-77 near Cambridge. Hours: 12 noon to 4 p.m., Wednesday through Sunday (March through October). Closed Easter and July 4th.

Please notify us immediately of any change in your address.

Please enclose an SASE when requesting information.

CAMBRIDGE GLASS BOOKS FOR SALE

by National Cambridge Collectors, Inc.

* **COLORS IN CAMBRIDGE GLASS**
(128 pages - 60 color plates - fully indexed)
Hardbound with Price Guide \$19.95

* **1930-34 CAMBRIDGE GLASS CO. CATALOG REPRINT**
(250 page reprint of original catalog)
Hardbound with Price Guide \$14.95

* **1949-53 CAMBRIDGE GLASS CO. CATALOG REPRINT**
(300 page reprint of original catalog)
Hardbound with Price Guide \$14.95

* **1956-58 CAMBRIDGE GLASS CO. CATALOG REPRINT**
(164 page reprint of original catalog)
Paperback \$6.95

1985 COMBINED PRICE GUIDE
for 1930-34 & 1949-53 catalog reprints Postpaid \$5.75

*NCC MEMBERS ONLY: *These publications are available at 10% discount - or all four (4) at one time for \$50.00.*

by Bill & Phyllis Smith

CAMBRIDGE GLASS 1927-1929
(66 page reprint of original catalog)
Paperback with Identification Guide \$7.95

by Mark Nye

CAMBRIDGE STEMWARE
(95 Stemware lines with 107 illustrations)
Paperback \$14.95

by Cambridge Buffs Study Group

NEARCUT
(108 page reprint of 1910 Cambridge Catalog)
Paperback with Price Guide \$9.95

by Mary, Lyle and Lynn Welker

CAMBRIDGE GLASS CO.
(120 pages of reprint from 8 old catalogs)
Paperback \$6.95

CAMBRIDGE GLASS CO. BOOK II
(119 pages of reprint from old catalogs)
Paperback \$6.95

CAMBRIDGE, OHIO GLASS IN COLOR II
Spiralbound \$5.95

by Harold and Judy Bennett

1903 CAMBRIDGE GLASS CO. CATALOG REPRINT
(106 page reprint of an original catalog)
Paperback \$7.50

Address your orders to:

BOOKS
National Cambridge Collectors, Inc.
P.O. Box 416
Cambridge, OH 43725

Please add \$1.00 (P & I) per order.
(Not required for Price Guide)
Ohio residents please add 6% state sales tax.

DEALER DISCOUNTS AVAILABLE - PLEASE WRITE!

Convention Update

by MARK A. NYE, 1987 CONVENTION CHAIRMAN

The Fenton Factory tour is on if a sufficient number of people elect to participate. This will be an optional Convention function at a fee of \$14.50 per person, with a minimum of forty (40) participants required. The fee is to cover the cost of renting a fully equipped bus with driver to transport the group from Cambridge to Williamstown and back. This activity will be listed on the Registration Form that will appear in the May CRYSTAL BALL. We will be asking that those Convention attendees who elect to participate submit a separate check for the cost of the tour. This check will not be cashed unless the forty minimum is reached. If it is not, the check will be returned to you at the Convention. It will also be necessary for those registrants wanting to go on the tour to have mailed their registration forms in time for arrival in Cambridge by June 5th.

Tentative plans are to depart from the Shenandoah Inn at 8:30 am on Friday and arrive at the Fenton plant around 10:00 am. At the factory there will be a tour of the plant and ample time to browse and make purchases in the gift shop. Following this, the bus will depart for the return trip, which will include a stop for lunch, the cost of which is NOT included in the tour fee.

Display glass may be brought to the Shenandoah as early as Thursday, June 25th. If you need to bring your glass early, it may be left at the club museum during the normal hours of operation. All glass, as well as the boxes it is in, should be clearly marked as to its ownership. In addition, you should supply a list of the glass you are loaning, as well as a value for insurance purposes. If by chance you would like to ship glass to be used in the display room, please contact me, thru the club address (P.O. Box 416, Cambridge, OH 43725), for instructions. Marlene Snyder will be in charge of the 1987 Convention Display Room, and she will be in need of help in assuring the room is attended at all times during the Convention. Upon your arrival at the Convention, please sign up to work at least one hour in the Display Room.

In addition to glass for the display room, don't forget we will be needing Nearcut era console bowls or other type bowls suitable for floral arrangements, along with candlesticks or holders for use on the Banquet tables. Remember also, that Nearcut doesn't necessarily have to be the heavy pressed imitation cut glass. Check your Welker reprints for the pages bearing the Nearcut trademark. We need your help to make the Banquet a memorable affair. Karen Isaacs has, once again, graciously consented to take on the task of organizing the group that will decorate the Banquet tables.

Last year's Convention Chairman, Dave Rankin, will be the speaker for the Saturday Morning Program. The title of Dave's talk is "Nearcut Era or Lemons Don't Whistle." No, the significance of the title will not be revealed until during the talk.

Saturday evening's Banquet Speaker will be well known glass authority Edward L. Trindle of New Hampton, New York. A long time N.C.C. member, Ed is, and has been for many years, one of the foremost mail order glass dealers in the country. Again, as with Dave, the title for his talk is both descriptive and mysterious, "Deja Vu or Dee Jay Who."

Elsewhere in this issue you will find a list of motels in the Cambridge area. These represent alternatives for those who find the Shenandoah Inn not to their liking. It is recommended that regardless of where you plan on staying, you make your reservations early.

JUNE 1987 CAMBRIDGE or BUST!

MOTEL & CAMPGROUND INFORMATION

SHENANDOAH INN

P.O. Box 147
Old Washington, OH 43768
(614) 489-5511

SALT FORK LODGE

P.O. Box 7
Cambridge, OH 43725
(614) 439-2751

BEST WESTERN MOTEL

(614) 439-3581

CAMBRIDGE TRAVELODGE

(614) 432-7375

DAYS INN

(614) 432-5691

DEER CREEK MOTEL

(614) 432-6391

HOLIDAY INN

(614) 432-7313

The mailing address for the motels shown without address is:

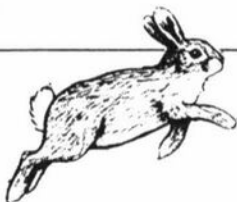
Route 209 & I-70
Cambridge, OH 43725

There are a few additional motels in the Cambridge area, and several nice campgrounds. If you are interested in obtaining additional information on the Cambridge/Guernsey County area, you can write for a FREE Brochure entitled "Cambridge/Guernsey County Discover Us!" Send your request along with your name and address to:

Cambridge/Guernsey Country
Visitors & Convention Bureau
2250 Southgate Parkway
Cambridge, Ohio 43725

It would be nice if you made mention of the fact that you are a member of N.C.C. when you write.

The government that is powerful enough to give everything to you is powerful enough to take everything from you.



Club News

National Cambridge Collectors, Inc.

Quarterly Meeting

February 27, 1987

Shenandoah Inn, Old Washington, Ohio

The meeting was called to order at 8:19 pm by President Kolb. In attendance were nine Board members and 50 members.

The minutes of the previous meeting held on November 8, 1986 were read by Janice Hughes and approved.

The Treasurer's report was given by Bill Smith showing the Operating Equity as of December 31, 1986 to be \$23,309.00 and the Museum Equity \$125,202.00. He stated the Financial Statement was available should anyone be interested.

COMMITTEE REPORTS

CONVENTION: Chairman Mark Nye reported the Convention will open on Thursday to accommodate the dealers and early arrivals. There will be seminars during the day and a reception in the evening. The Saturday morning speaker will be David Rankin on the subject "Nearcut Era or Lemons Don't Whistle." A bus tour to Fenton is planned on Friday should there be enough interest. Nearcut glass will be needed for the Display Room and Banquet tables.

MEMBERSHIP: Chairman Phyllis Smith reported we now have 1,219 members.

CRYSTAL BALL: Editor Phyllis Smith reported the March issue was in the mail.

PROJECTS: Chairman Willard Kolb reported the Eagle bookend was still available. The Board is discussing the possibility of a new book.

MUSEUM: Chairman Bill Harbaugh reported the Museum opened on February 27th.

FLEA MARKET: Chairman Marybelle Moorehead reported the contracts have been mailed.

continued on page 11

NATIONAL CAMBRIDGE COLLECTORS, INC.
ANNUAL CONVENTION
JUNE 25 - 28, 1987
TENTATIVE SCHEDULE OF CONVENTION EVENTS

THURSDAY, JUNE 25, 1987

10:00 am - Convention Office Opens in Rm. 101 - Registration packets available for pick up. Display Room Glass accepted in Rm. 101.

1:00 pm - Program: "Cambridge Stemware."

2:00 pm - Program: "Cambridge Etchings."

3:00 pm - Program: "Cambridge Colors."

4:00 pm - Program: "Nearcut Patterns."

7:00 pm - Conv. Chairman's Reception. Upstairs Banquet Room. Cash Bar.

FRIDAY, JUNE 26, 1987

8:00 am - Convention Office Open - Registration packets available for pick up in Room 101.

8:30 am - Fenton Art Glass Factory Tour. Meet in lower level lobby near Convention Office - Room 101.

9:00 am - Glass for Display room accepted in Room 100.

9:30 am - Crystal Art Glass and Mosser Glass Factory Tours. Meet in lower level lobby near Convention Office - Room 101.

4:00 pm - Film: "The Crystal Lady."

5:00 pm - Convention Office closes.

5:30 pm - Book Sales Opens - lower level lobby.

6:00 pm - Antique Show Opens.
Ticket Required.

9:00 pm - Opening Session - Upstairs Banquet Room. Cash Bar - Get Acquainted Hour, Announcements, Mini-Auction.
Ticket Required.

SATURDAY, JUNE 27, 1987

5:00 am - Dealers set up at Flea Market.
Admission Fee for non-dealers.

6:00 am - Flea Market, Guernsey Co. Fairgrounds Open. Admission Fee.

8:00 am - Buffet Breakfast.
Upstairs Banquet Room.

9:15 am - Saturday Morning Program
Speaker: Dave Rankin "Near Cut Era or Lemons Don't Whistle."
Ticket Required.

11:00 am - Antique Show - Convention Office Room 101 - Book Sales - Display Room 100 - all reopen.

11:00 am - Program Rm. 1 "Stemware."
Program Rm. 2 "Etchings."

12 noon - Program Rm. 1 "Colors."
Program Rm. 2 "Etchings."

1:00 pm - Program Rm. 1 "Stemware."
Program Rm. 2 "Colors."
Program Upstairs Banquet Room: "Nearcut" by Bill Smith.

2:30 pm - Annual "Show & Tell" Program. Upstairs Banquet Room - bring your interesting items for I.D. and discussion. Lynn Welker.

4:00 pm - Program Rm. 1 "Stemware."
Program Rm. 2 "Nearcut" by Mark Nye.

4:00 pm - Convention Office closes.

5:30 pm - Antique Show & Book Sales close.

6:00 pm - President's Reception. Cash Bar. Banquet Room Upstairs.

7:00 pm - N.C.C., Inc., Annual Banquet
Guest Speaker: Ed Trindle, "Deja Vu or Dee Jay Who."
Ticket Required.

SUNDAY, JUNE 28, 1987

9:00 am - Buffet Breakfast - Upstairs Banquet Room. Ticket Required.
N.C.C., Inc., Annual Meeting following Breakfast.

12 noon - Antique Show - Book Sales - Display Room - ALL reopen.

1:00 pm - Program Rm. 1 "Etchings."
1:30 pm - Program Rm. 2 "Colors."

1:30 pm - Former Cambridge Co. Employee Reunion - NCC Museum.
Bill Smith Coordinator.

2:00 pm - Program Rm. 1 "Nearcut Patterns" by Mark Nye.

3:00 pm - Display Room Closes.
Pick up loaned glass.

5:00 pm - Antique Show and Book Sales Closed.

Your Convention REGISTRATION FORM will be included in the May issue of the C.B.!

A Novice's Reactions To The Auction

by MARCIA ELLIS

ONCE . . . I attended an Auction for about an hour and swore I'd never go to one again. It was held under a tent and I nearly froze to death. Besides, it just didn't appeal to me.

However, since we were winding up from a trip into West Virginia and the "wind up" spot was within forty minutes of the Cambridge Auction, I decided to give this type of activity one more try . . . for surely the Shenandoah would be warmer than the tent!



The unusual Baseball Player decoration on this #9403 12 oz. Tumbler made it worth \$60 to some lucky bidder; while the Canape Set decorated with the Hunt Scene only fetched a top bid of \$40. The carmen pressed Rosepoint Champagne brought \$70.

To make certain that I not miss one thing, I reserved two seats in the center section, front row! Of course, the second the Auctioneer started, my nose started to itch, and I seemed to spend the first half hour with my head turned sideways trying to itch without the Auctioneer thinking I was trying to horn in on someone's bid. Now, I'm a pretty fair motor mouth, but that Auctioneer had me thinking, at one point, he might not make it to the Carrara set.

I FINALLY worked up enough courage to test

the water. This didn't seem half bad at all, and I even ended up being high bidder . . . which is not at all hard to do if you keep answering the Auctioneer.



The Candlesticks on the bottom shelf in the middle of the table are hollow blown in Helio. They and the matching bowl went for the reasonable price of \$70 for the set. The Jenny Lind Candy Box & cover in the late Mulberry color was a most unusual buy at only \$85.



It was hard to believe that the crystal Apple Candy Box and cover (which is almost never seen) was allowed to leave the room for \$50!

The rest was easy. Even contending with my husband who wanted me to bid on just about everything. Instead of leaving after the bidding on the Carrara, we stayed to the very end - even thinking . . . next year! We guess we'd better put this on our "must do" list.

The Auctioneer is great! He'll even tell you at what minute the Auction will conclude. It was super well handled and executed.



Several attractive pieces in Ebony found a new home during this year's All-Cambridge Glass Auction. The Decagon Bowl with gold etched Lorna brought \$55, while the Pinch Decanter on the other end of the table with "Rye" in sterling silver trim was picked off for a mere \$45. The Charleton Roses decoration on the Candy was outstanding - no wonder the dish brought an \$80 price tag. The Lamp went for \$135, while the 10 1/2" Swan realized \$180, and the ebony Nude stemmed Cocktail with the crystal bowl brought the gavel down at \$75.

It is also mind boggling to think of the hours of work that our Cambridge people put in on this Auction. Accepting the glass, putting it in catalog form, and then displaying it.

Also, Kudos to those who assisted during the Auction in holding up the pieces ready for bid . . . and finally those who have to ship out the pieces that were purchased by mail bids!

The girls who had to sit there the whole time and concentrate on the bids, recording them and settling up with each account should be commended for their powers of concentration.

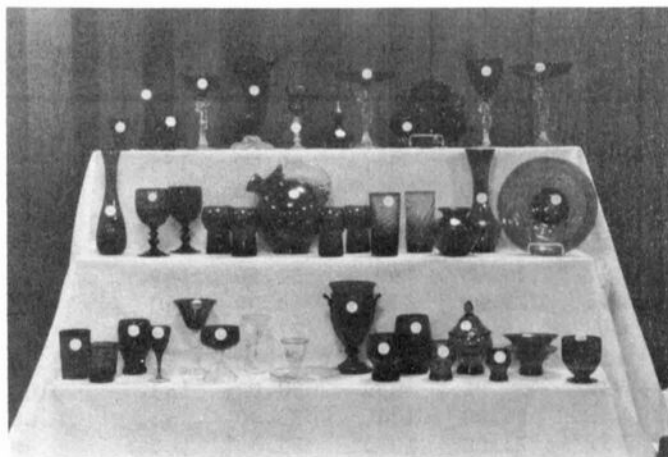
(EDITOR'S NOTE: As always, Auction Chairman Lynn Welker and his most able committee put together another fine auction. Our sincere "Thanks" to Lynn, his committee, and to our fine Auctioneer Craig Connelly!)

(Photo's by Bill Smith)



LOVELY SHADES OF BLUE

The 10" Stick Vase in early cobalt was a bargain at \$30. You don't find many pieces of Cambridge in this early color. As always, pieces in royal blue continue to be in demand, bringing top dollar prices. The hard to find Nude stem Cigarette Box and cover brought \$210, while the graceful Cornucopia Vase with shell foot went for an even \$100. The little #3500 2 1/2 oz. Wine with the rare gold silk screen urn and flowers etching brought a respectable price of \$85.



ADDITIONAL PIECES OF AUCTION GLASS
(Editor's Note: We are sorry for the lack of a photo of the lovely Carrara Water Set. This nine piece set sold for a total of \$1,520.)

Back to the Auctioneer for a minute. I knew he seemed like a really great person . . . no wonder . . . we discovered he's originally from none other that Rochester, New York!!!

SEE YOU AT THE AUCTION NEXT YEAR!

1987 AUCTION RESULTS

1.	\$ 26.00	61.	\$ 20.00	121.	\$ 60.00	181.	\$ 20.00	241.	\$ 48.00	301.	\$ 40.00
2.	80.00	62.	20.00	122.	80.00	182.	20.00	242.	12.50	302.	30.00
3.	17.50	63.	15.00	123.	12.50	183.	20.00	243.	49.00	303.	102.00
4.	15.00	64.	20.00	124.	32.00	184.	80.00	244.	35.00	304.	70.00
5.	7.50	65.	20.00	125.	40.00	185.	45.00	245.	25.00	305.	15.00
6.	27.50	66.	27.50	126.	7.50	186.	20.00	246.	10.00	306.	35.00
7.	32.50	67.	22.50	127.	70.00	187.	27.50	247.	35.00	307.	30.00
8.	130.00	68.	45.00	128.	125.00	188.	80.00	248.	30.00	308.	50.00
9.	15.00	69.	160.00	129.	45.00	189.	25.00	249.	22.50	309.	10.00
10.	35.00	70.	70.00	130.	80.00	190.	5.00	250.	25.00	310.	35.00
11.	28.00	71.	22.50	131.	80.00	191.	12.50	251.	50.00	311.	12.50
12.	25.00	72.	25.00	132.	140.00	192.	30.00	252.	22.50	312.	10.00
13.	50.00	73.	310.00	133.	25.00	193.	55.00	253.	17.50	313.	10.00
14.	25.00	74.	27.50	134.	8.00	194.	210.00	254.	10.00	314.	70.00
15.	22.50	75.	80.00	135.	70.00	195.	70.00	255.	100.00	315.	22.50
16.	50.00	76.	100.00	136.	25.00	196.	60.00	256.	30.00	316.	20.00
17.	20.00	77.	40.00	137.	20.00	197.	75.00	257.	30.00	317.	15.00
18.	16.00	78.	30.00	138.	30.00	198.	80.00	258.	40.00	318.	10.00
19.	20.00	79.	40.00	139.	17.50	199.	100.00	259.	30.00	319.	35.00
20.	10.00	80.	145.00	140.	45.00	200.	150.00	260.	55.00	320.	12.50
21.	20.00	81.	25.00	141.	20.00	201.	310.00	261.	90.00	321.	4.00
22.	22.50	82.	50.00	142.	30.00	202.	55.00	262.	85.00	322.	20.00
23.	20.00	83.	20.00	143.	45.00	203.	10.00	263.	45.00	323.	80.00
24.	20.00	84.	175.00	144.	40.00	204.	40.00	264.	90.00	324.	5.00
25.	20.00	85.	85.00	145.	15.00	205.	7.50	265.	65.00	325.	25.00
26.	80.00	86.	40.00	146.	45.00	206.	- - - -	266.	80.00	326.	60.00
27.	15.00	87.	75.00	147.*	40.00	207.	set of	267.	45.00	327.	17.50
28.	27.50	88.	50.00	148.	37.50	208.	carrara	268.	125.00	328.	15.00
29.	20.00	89.	20.00	149.	15.00	209.	sold	269.	45.00	329.	25.00
30.	25.00	90.	65.00	150.	87.50	210.	all for	270.	25.00	330.	5.00
31.	65.00	91.	55.00	151.	30.00	211.	one	271.	40.00	331.	3.00
32.	30.00	92.	35.00	152.	17.50	212.	price	272.	30.00	332.	6.00
33.	30.00	93.	50.00	153.	22.50	213.	1520.00	273.	40.00	333.	10.00
34.	15.00	94.	25.00	154.	10.00	214.	- - - -	274.	7.50	334.	15.00
35.	12.00	95.	40.00	155.	12.00	215.	40.00	275.	22.50	335.	10.00
36.	12.50	96.	75.00	156.	40.00	216.	185.00	276.	50.00	336.	22.00
37.	15.00	97.	60.00	157.	25.00	217.	50.00	277.	64.00	337.	10.00
38.	20.00	98.	65.00	158.	75.00	218.	30.00	278.	66.00	338.	7.50
39.	30.00	99.	32.50	159.	25.00	219.	650.00	279.	60.00	339.	24.00
40.	25.00	100.	55.00	160.	25.00	220.	95.00	280.	20.00	340.	9.00
41.	35.00	101.	37.50	161.	36.00	221.	140.00	281.	20.00	341.	17.50
42.	180.00	102.	52.50	162.	22.00	222.	30.00	282.	35.00	342.	5.00
43.	25.00	103.	60.00	163.	20.00	223.	7.50	283.	32.50	343.	5.00
44.	55.00	104.	35.00	164.	20.00	224.	95.00	284.	12.50	77A.*	30.00
45.	75.00	105.	45.00	165.	5.00	225.	75.00	285.	40.00	327A.*	15.00
46.	85.00	106.	50.00	166.	60.00	226.	30.00	286.	28.00		
47.	150.00	107.	50.00	167.	35.00	227.	30.00	287.	60.00		
48.	105.00	108.	45.00	168.	35.00	228.	12.50	288.	40.00		
49.	45.00	109.	85.00	169.	17.50	229.	20.00	289.	128.00		
50.	35.00	110.	27.50	170.	45.00	230.	12.50	290.	120.00		
51.	60.00	111.	90.00	171.	40.00	231.	15.00	291.	15.00		
52.	45.00	112.	135.00	172.	47.50	232.	17.50	292.	20.00		
53.	45.00	113.	25.00	173.	30.00	233.	7.50	293.	24.00		
54.	35.00	114.	25.00	174.	65.00	234.	10.00	294.	35.00		
55.	25.00	115.	85.00	175.	17.50	235.	30.00	295.	7.50		
56.	25.00	116.	60.00	176.	15.00	236.	35.00	296.	80.00		
57.	20.00	117.	50.00	177.	41.50	237.	15.00	297.	70.00		
58.	60.00	118.	60.00	178.	72.50	238.	48.00	298.	25.00		
59.	60.00	119.	12.50	179.	20.00	239.	16.00	299.	55.00		
60.	20.00	120.	155.00	180.	50.00	240.	24.00	300.	25.00		

* Additions & corrections.

77A. Cascade cream & sugar em. green

147. "Dawn"

327A. Cascade candlestick, crystal

Wildflower

by MARK A. NYE

"Wildflower is the name given to this beautiful new etching created by the Cambridge Glass Company. In its modern treatment the graceful 'Wildflower' offers a theme for the most fastidious and unique table decoration. Wildflower represents a new treatment in etching. The stems, leaves and flowers with the satin background give a very pleasing and delightful effect. This pattern will be available in open stock for many years affording opportunity for addition and replacement."

The preceding is taken from an undated Cambridge advertising pamphlet most likely issued during 1937, the first year Wildflower was sold. It was introduced to the trade in January 1937 and the following is quoted from the issue of "China, Glass & Lamps" issued that month.

"Below is shown one of the Cambridge Glass Co.'s newest etchings, the 'Wild Flower.' It is made in a full line of stemware and flatware, as well as vases. The design may also be had in the same range of items in a gold encrustation."

Note the method of spelling the etching name. This was apparently an error by the publisher as it was printed as one word in the advertising pamphlet issued shortly thereafter.

Very few references to Wildflower appeared in trade journals over the years and three that were found were primarily not selling the etching itself but rather were promoting it in conjunction with other Cambridge wares. From 1938, 1940 and 1942 come the following.

"Appropriately etched with all-over floral designs, these four vases from the Cambridge Glass Co. are particularly timely for Spring and Summer displays in the store. The etchings are 'Rose Point,' 'Wildflower,' 'Portia' and 'Elaine' and the vases are available either plain or with gold bands at the top and foot. Plain etched, they can be retailed for \$2.50 each; with the gold bands, for \$4.00 each." The vases shown were the #1238 12" ftd., the #278 11" ftd., the #1242 10", and the #797 8" flip vase.

"Ever a favorite for a number of interesting

uses are these charming glass hats, skillfully hand etched by Cambridge. Available in several of the newest highlighted etching patterns.....in small, medium and large sizes." In this case, one of the etchings available on the hats was Wildflower.

"Handsome and useful is this new piece from the Cambridge Glass Company -- a triple salad dressing bowl set on a plate and equipped with three ladles. It is the No. 1493 set and it is decorated with the floral etching called the 'Wildflower!'"

As the 1940s dawned, the then current Cambridge catalog and price list contained 220 entries for Wildflower, plain etched. In addition there were extensive listings for the etching gold encrusted and plain etched with a gold edge. Even though Wildflower was an extensive line, except for a brief time during the early 1940s, there was only one stemware line etched Wildflower and it was #3121. The exception is the limited production of the etching on #3725 blanks that most likely took place during 1941, examples of which are seldom seen today.

As was true for many other etchings of the 1930s, the primary blank used for Wildflower at the time of its introduction was the #3400 line. From this line there are complete Wildflower place settings including the 10 1/2" service or dinner plate as well as a wide range of serving, accessory and decorative items.

Other blanks used for this etching included the Gadroon or #3500 represented by 17 pieces in the 1940 listing; #1402 or Tally-Ho line with 22 entries under Wildflower, and to a lesser extent, pieces in the Pristine and Martha lines are also to be found with this etching. A majority of the Wildflower/Tally-Ho combinations consist of assorted configurations of two twin salad dressing bowls, #1402/133 and #1402/95. Most notable among the pieces from the Martha line etched Wildflower is the #478 15" Punch Bowl along with its #129 18" underplate and the 5 oz. punch cup.

With the coming of the Corinth or #3900 line, the #3400 line was discontinued and beginning with the 1949 catalog, we find the blank of choice for Wildflower is the Corinth line.

continued on page 11

GENUINE
HAND MADE
Cambridge
MADE IN U.S.A.



3900/17



3900/19



3900/115



968



3900/1177



477



3900/65



3900/20



3900/22



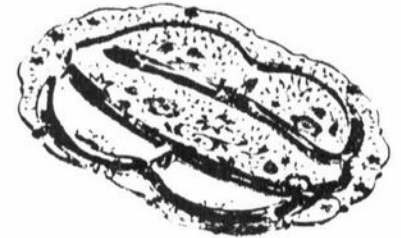
3900/67



3900/123



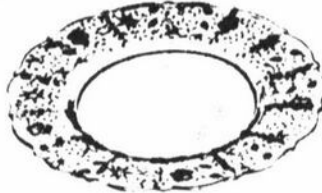
3900/124



3900/120



3900/28



3900/24



3900/111



3900/100



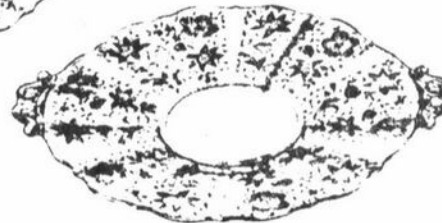
1309



3900/34



3900/26



3900/35



3400/91



3900/40



3900/41



3500/15



3900/129



1299



3900/74



3900/72



3900/131



3900/165



3900/136



3900/125



274



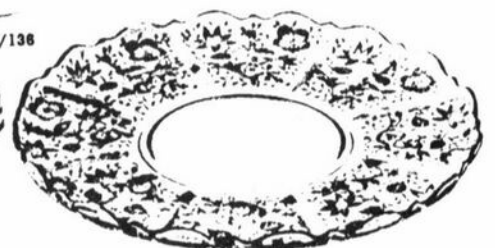
3900/671



3121
3 1/2 oz.
Wine



3900/62



3900/166

WILDFLOWER continued from page 9

However, there was a marked decrease in the number of items available, with the 1949 price having some 89 pieces. By the fall of 1953, availability of Wildflower had increased with a price list issued in October offering a choice of 117 items. During this period, enhancement of the pattern with gold was done on a limited basis with only a few items, at one time there were just six, being produced gold encrusted or with a gold edge.

Wildflower continued to be produced during the years 1955-58, the reopen period, but scaled back to some 63 items being offered in both the 1956 and 1958 price lists. Limited production of gold encrusted Wildflower as well as plain etched with a gold edge also continued with eight items available either way.

While primarily etched onto Crystal blanks, Wildflower will also be found to a very limited extend on ebony blanks where it is almost always gold encrusted and on amber and gold krystal, plain etched.

AN EXPRESSION OF SYMPATHY

It is with great sadness that we must report the untimely death of longtime N.C.C. member

RAYMOND L. BROWN
Burton, Michigan
February 23, 1987

Many of you will remember Ray and his wife Clara as one of the friendly couples from the Michigan Caprice Study Group who served as greeters at each of the Convention functions during the past few years.

Ray will be greatly missed by all who knew him. Our most sincere sympathy is extended to his wife Clara and their entire family.

CLUB NEWS continued from page 4

OLD BUSINESS: None.

NEW BUSINESS: Bill Smith reported nominees for the Board of Directors are as follows:

J. D. Hanes, Cambridge, Ohio
Janice Hughes, Cambridge, Ohio
Lynn Welker, New Concord, Ohio
Clarke West, Springfield, Ohio

President Kolb announced the floor open for nominations. There were none. President Kolb closed the nominations.

Ray Brown, Kent, Ohio, asked if N.C.C. could inform a certain magazine on the years Caprice was made.

Bill Smith reported over 600 people visited the Museum in 1986 and asked members to encourage visitors.

Lynn Welker presented "Show & Tell" and reported on the Auction glass.

A motion was made by Frank Wollenhaupt to adjourn at 9:15 pm.

Janice Hughes, Secretary



BUNNY BOXES

by PHYLLIS D. SMITH



Large "Bunny" Box and Cover

The Cambridge Glass Company made a contribution to the Easter Holiday in the form of a cute little Bunny box, complete with lid, fur detail and darling little padded feet. If you ever have the opportunity to see one, be sure to check it out completely . . . it is a nice piece of work. They were available in two sizes, as you can see, large (7") and small (5").



Small "Bunny" Box and Cover

The original intended use of this box is unknown. It could have been for a sauce dish, candy container, or possibly even a jewelry box. Take your pick . . . you are limited only by your own imagination. Introduced sometime in 1931 (I like to think in time for Easter), it was in production for possibly as many as nine or ten years. The June 1940 price list is the last time they are listed as being in production, and the record book listing the molds that were donated to the "Scrape Iron Drive" during World War II, lists them as having been donated for the good of our country!

If you have been lucky enough to have had an encounter with a bunny, you are no doubt aware of the fact that they were made with and without hair. The fur (or "feather" as some of us seem bound to say) detailing was on the early ones. In an old mold order book an entry has been found, dated 11-17-39 which states "take rough effect off large and small rabbits." Therefore those produced after the end of 1939 were without the fur detail. It would be interesting to know why they did this. There must have been a good reason.

These rabbits are, as the saying goes, just about as "scarce as hen's teeth!" They have been found in the following colors, both plain and satin finish: pink, light emerald green, amber, tahoe blue, and crystal. One is known in ebony satin and two in crown tuscan. Other colors are not impossible . . . it's just that we haven't heard of them. If you have -- PLEASE let us know!

Let's hope your Easter Rabbit brings you a cute little Bunny - with or without "Hare!"

Duncan & Miller Research Reveals a Treasure Trove by George A. Fogg

We find in Vol. XLIV, No. 14, November 5, 1931, a note on Mr. Bennett. From the "Pittsburgh" column. "Arthur J. Bennett, president of Cambridge Glass Company, and W.L. Orme, Vice-president of the concern, are back at headquarters in Cambridge, Ohio, after an eastern business trip."

From the same volume, but No. 17, November 26, 1931, from the "Buyin Chicago" column, "Cambridge Glass Co., Line of Novelty Pieces in Black Glass Decorated with Silver."

"Felix Wohlgemuth, manager of the Middle West sales quarters of the Cambridge Glass Co., located in the Merchandise Mart, Chicago, announces the receipt from the factory in Cambridge, Ohio, of an interesting new line of novelty pieces in black glass decorated with silver."

"The pieces are of unusual design and are decorated with handsome silver figures of dogs as well as silver line diagrams. The pieces include candy dishes, vases, cake plates, humidors, cigarette boxes and ash trays, tobacco jars, cocktail shakers, creamers and sugars, and tumblers, all made in clever shapes."

"The Cambridge company is also showing in its Chicago salesrooms a new line of stemware manufactured in an especially lovely shape, known as the No. 3122 pattern. The line includes all stemware pieces and comes both in unetched colored glass and in etched crystal. The etching on the crystal glass is known as the 'Diane' etching, and is unusually charming, combining a classic grace and simplicity."



34. Butter Dish and Cover.



37. Handled Spoon.



36. Cream Pitcher.



35. Handled Sugar Bowl and Cover.



4. Berry Sugar.



5. Berry Cream.



13. 9 in. Canoe Pickle.



9. 6 in. Handled Olive.



6. Mayonnaise Bowl.



7. Sweet Meat.



8. 5 in. Low Foot Bowl.



12. 8 in. Pickle Tray.



16. 5 in. Handled Olive.



1. Small Round Vase.
6½ in. High. 3¼ in. Diameter.



30. Quart Jug.
Also made
42. ½ Gal. Tall Jug.



2. Large Round Vase.
4½ in. Diameter.



3. Square Vase.
6½ in. High. 2¼ in. Square.



43. Tumbler.



39. 4½ in. Nappy.
Also made Belled Shape,
38. 4½ in. Nappy.



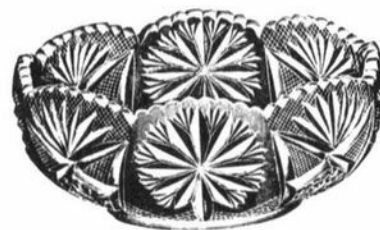
41. Tall May Basket.



11. 7 in. Shallow Nappy



32. 8½ in. Belled Nappy, C Shape.
Also made
31. 8½ in. Round Nappy, A Shape.



33. 7½ in. Nut Bowl.



10. 6 in. Shallow Nappy.



14. 6 in. Deep Nappy.



15. 7 in. Hexagon Nappy.

**MAKE A DATE FOR
THE SAN FRANCISCO
DEPRESSION ERA GLASS,POTTERY
CHINA SHOW & SALE**

APRIL 11th & 12th

SAT/SUN 10AM - 5PM - ADM.\$2.50

\$2.00 With This Card

**SAN FRANCISCO
COUNTY FAIRGROUND BUILDING
FORMALLY
"THE HALL OF FLOWERS"
9th Ave. - & Lincoln-way**

**CAMBRIDGE, FORSTORIA, HEISEY, FENTON HALL, ROSEVILLE,
FIESTA, WADE, DEPRESSION GLASS, REFERENCE BOOKS.
GLASS REPAIR.**

DEALER INQUIRIES INVITED

for the expanded

OCTOBER 10th & 11th

SHOW

**'UP TO PARR' PROMOTION
592 Guerrero St., S.F. CA
94110-1018. (415) 285-5657**

The new stemware is furnished in only one color, a royal blue of unusual depth and consistency. The color, as well as the new etching, is also furnished in a complete line of tableware. Mr. Wohlgemuth reports that the new stemware and the line of novelty pieces have met with gratifying success at the hands of local quality retailers, including the State Street merchants."

Out of this column we gather some good information. Black glass again -- Whatever happened to Ebony? Now it has silver overlay. The writer gives a good lengthy list of articles made and which show up in the NCC catalog reprints. He, also, comes up with an actual Cambridge number (#3122) and names an etching for us "Diane," and gives us a color "royal blue." If only the writers of the articles had known how important number, patterns and colors would be to the researchers of the future, I am sure they would have acceded to our desires. What a dream!

— Classified —

FOR SALE: Elaine etched Stemware. 8 each: tall Goblets; tall Sherbets; low Sherbets; Wines; Cups & Saucers; and Salad Plates. Also divided Candy and other miscellaneous pieces. Call or write to: **Marjorie Dobbins**, 145 Garden Drive, Montgomery, IL 60538. Phone: 312/892-2869

SHOWCASE ANTIQUE and GIFT SHOP

EVELYN M. ALLEN

1263 HEBRON RD. (Rt. 79), HEATH, OH 43056
614/522-1785

HOURS: 12:30 to 5 PM DAILY
(Closed Monday)

BUYING and SELLING: CAMBRIDGE, HEISEY,
FOSTORIA, FENTON, & OTHER AMERICAN
MADE GLASS, & POTTERY
NEW GIFT ITEMS

Other hours by Appointment Home Phone 614/522-1635

COLUMBUS ANTIQUE FLEA MARKET (ANTIQUES & COLLECTIBLES)

Ohio State Fairgrounds - Lausche Building
Off I-71 Exit 17th Avenue - Columbus, Ohio

APRIL 12th

Sunday Only - 7 A.M. to 4 P.M.
Show Admission \$1.50 - Under 12 Free
150 QUALITY DEALERS

SELLING: Advertising Art Deco, books, Cambridge, clocks, coins, collectibles, Depression glass, dolls, Fiesta, fine early furniture, Heisey, jewelry, lamps, oak furniture, post cards, pottery, good primitives, tools and print shop items.



4214 North High Street, Columbus, Ohio 43214
(614) 267-8163 (614) 263-6830 (614) 885-2352

NEXT SHOWS: May 10th; June 28th
Sept. 13th; Oct. 11th; Nov. 8th; Dec. 13th

The DAZE

★ SPECIAL OFFER
to NCC friends
\$2. off the 1 year
subscription price,
when on this form
or copy of.

The Original, National monthly newspaper dedicated to the buying, selling & collecting of colored glassware and china including Depression Glass and the Elegant Glass (Cambridge, Heisey, Fostoria etc.). We educate and inform you each month with feature articles by top notch columnists, readers "finds", club happenings, show news and a multitude of ads. Find those missing pieces to your 30s, 40s or 50s pattern. Can't identify it? Perhaps we can help. "Keep up with what's happening with a subscription to the DAZE. Buy, sell or trade from the convenience of your easy chair.

Name _____ Street _____

City _____ State _____ Zip _____

1 yr. \$15.00 2 yrs. \$29.00 \$1.75 single current copy
 Check enclosed MasterCard Visa

Exp. date _____ Card No. _____

Signature _____

Orders to D.G.D., Box 57NC, Otisville, MI 48463

Please allow 30 days for your first issue— Canadian subscribers, add \$1. per year and subscribe by charge card only! This Special Offer May Not Be Combined With Other Special Offers

STAGE COACH ANTIQUE MALL

(formerly White Pillars Antiques)

Doris & Roy Isaacs

7525 East Pike
Norwich, OH 43767

614/872-3720

MANY DEALERS. . .

PLENTY OF PARKING. . .

WIDE SELECTION OF GLASS

AND POTTERY

FURNITURE AND

GENERAL LINE!

BUY and SELL

OPEN YEAR ROUND

Weekdays - 10 AM - 5:30 PM

Sunday - 12 noon - 5:30 PM

Summer Evening Hours - by Chance!

Located 9 miles E. of Zanesville, OH, on I-70 to Norwich
Exit #164 - then 1/2 mile W. on Route 40.

NATIONAL CAMBRIDGE COLLECTORS

FLEA MARKET

SATURDAY, JUNE 27th

6 A.M. to 5 P.M.

DEALERS MUST REMAIN SET UP UNTIL 2 P.M.

GUERNSEY COUNTY FAIRGROUNDS

OLD WASHINGTON, OHIO

(one mile East of I-70, Exit #186, on Old U.S. 40)

DEALER SPACE AVAILABLE

FOR INFORMATION or CONTRACT write to:

Marybelle Moorehead, Chairperson, N.C.C., Inc., P.O. Box 416, Cambridge, OH 43725

Cynthia Yorke

31520 EVERGREEN, BIRMINGHAM, MI 48009

Phone: 313/ 645-5173

SHIPPING ONLY \$2.00 - ANY SIZE ORDER!

APPLE BLOSSOM ETCH - GOLD KRYSTOL

#3400 7 1/2" plate (6).....	\$ 9
#3135 goblet (6).....	22
#3135 goblet - nicked (2).....	6
#3135 champagne.....	16
#3135 champagne - nicked.....	5
12" 5-part relish, crystal.....	30

CAPRICE

#300 low sherbet, crystal (8).....	\$ 12
#300 champagne, crystal (6).....	12
#300 12 oz. ftd. tumbler, crystal (16).....	15
#300 cocktail, crystal (4).....	13
2 1/2" Stick, crystal, pair.....	22
8 1/2" 3-pt. celery & relish, crystal.....	22
#154 6" sq. bonbon, blue alpine...	29
#1 10 oz. goblet, blue alpine (8)...	36
#2 tall sherbet, blue alpine (8)...	33
6" mayo liner, blue.....	8
8" mayo liner, pink.....	16

CHANTILLY ETCH

#103 7" 3-pt. candy & cover, sterling knob.....	\$ 85
3 ft. candy & cover.....	95
Ruffled cigaret, sterling base (2)	26
#3900 cornucopia, ruffled vase, sterling base.....	72

CLEO ETCH - EMERALD

Center handled server (2).....	\$ 32
--------------------------------	-------

DIANE ETCH

#3122 9 oz. ftd. tumbler (8).....	\$ 14
#3122 7 oz. champagne (5).....	14
#3900 7 1/2" plate (8).....	7
#3400 cup & saucer (4).....	18
4 ft. candy & cover.....	60
Twin salad dressing.....	29
#3400 7" comport.....	35
#3400 butter & cover, scratched...	80

ELAINE ETCH

#3500/67 6-pc. relish set.....	\$ 80
--------------------------------	-------

MT. VERNON - AMBER

Ftd. Cigaret holder.....	\$ 32
--------------------------	-------

PORTIA ETCH

#3900/120 12" 5-pt. relish.....	\$ 35
---------------------------------	-------

ROSELYN ETCH

#3779 ftd. ice tea (10).....	\$ 13
#3779 low sherbet (8).....	13
#3779 cocktail (5).....	13
#3779 low goblet.....	13
Square 7" plate (12).....	6

ROSEPOINT ETCH

#3400 ice bucket.....	\$ 90
#147 8 oz. marmalade.....	80
#1338 triple candlestick, pair (2 pair).....	120
#3400 12" fl. 4 ftd. bowl.....	50
Twin salad dressing - sterling base.....	55
10" 5-pt. relish.....	52
#3400 cream & sugar.....	43
#3500 6" comport - gold encrusted.	50
#647 6" 2-lite candlestick (pair).	95

WILDFLOWER ETCH

#3900 12" 3-pt. celery & relish...	\$ 32
------------------------------------	-------

MISCELLANEOUS

#1321 decanter & 4 sherrys, royal blue.....	\$115
#1066 1 oz. cordial, forest green (4).....	13
Barrel shot glass, frosted topaz (4).....	10
#533 3-pc. mayo set, emerald w/#704 etch.....	29

SHIPPING ONLY \$2 - ANY SIZE ORDER!

SPECIALIZE IN CAMBRIDGE GLASS & ANTIQUES
DOYLE L. BYINGTON
 58 Buena Vista Ter., San Francisco, CA 94117
 415/621-1854
 Shows: Mail-Order - Buy & Sell - By Appointment

DEALERS DIRECTORY

**When Writing To
 Dealers Please
 Include SASE**

THE MUTED SWAN ANTIQUES
 5486 Peachtree Rd. Chamblee, GA 30341
 Heart of Chamblee Antique Row
 Specializing in Cambridge, Heisey and Fostoria
 Bill & Pat Miller 404-451-7620

MILBRA'S MATCHING SERVICE
 P.O. Box 363, Rio Vista, TX 76093
 Milbra Long 817 / 645-6066
 FOSTORIA * CAMBRIDGE * HEISEY * DEPRESSION
 ERA GLASSWARE
BUY and SELL

BENICIA ANTIQUE SHOP
 305 First Street
 Benicia, California 94510
OPEN 11 AM - 5 PM
 Closed Monday
 Z. E. LOPES 707-745-0978

CHARLES MIKULIK
 Box 416
 Elizabeth, N.J. 07207
— COLLECTOR —
 Always paying good prices for
CAMBRIDGE CAPRICE
 in all colors
 201-688-1144
CARRY MOST TYPES OF ANTIQUES

ANDREJCAK'S ANTIQUES
 14533 Bayes Ave.
 Lakewood, Ohio 44107
 Joe & Karen Andrejcek 216-226-3417
SHOWS ONLY — CAMBRIDGE — FENTON — CHINA

VISIT HISTORIC BENICIA
 and its 28 shops
 Off Interstate #80
 North of San Francisco

BOGART'S ANTIQUES
 Stagecoach Mall, Building #2
 Norwich, OH 43767

Jack and Sharon Bogart
 614/826-7439 and 614/872-3514

 BUY - SELL - APPRAISE - REFINISH
 SEAT WEAVING - CLOCK REPAIR
 COPPER & BRASS POLISHING
GENERAL LINE CAMBRIDGE GLASS

RICHARD BENNETT
 64183 Warne Drive, Cambridge, OH 43725
 Phone: 614 / 432-4483
SPECIALIZING IN CAMBRIDGE GLASS
 Stagecoach Mall - Bldg. 3 - Norwich, OH

BERKELEY ANTIQUES
 69 Berkeley St., Boston, MA 02116
OPEN: Monday thru Saturday 11 AM to 5 PM
 GEORGE & FRANK 617/426-1048
DUNCAN, CAMBRIDGE, HEISEY, GENERAL LINE

D & D ANTIQUES
 Columbus, Ohio
DICK SLIFKO SHOWS ONLY

THE GLASS MENAGERIE
 212 Market Street
 Denton, Maryland 21629
 Barbara & Bill Danels 301/822-8794
SPECIALIZING IN GLASSWARE OF THE DEPRESSION ERA

THE GLASS CUPBOARD
 39 Shire Oaks Drive
 Pittsford, New York 14534
 Marcia Ellis Cambridge, Duncan Miller
 (716) 586-7596 Shows, Mail Order, Appt.

JUDY'S ANTIQUES
 Judy Bennett
 422 S. Ninth Street (Corner of Jefferson)
 Cambridge, Ohio 43725
BUYING Ph. 614-432-5855 SELLING
Cambridge Glass my Specialty

"Happiness Is" - The Stultzs
 3106 Warren Court, Glen Allen, VA 23060
 Shows and Mail (Richmond Area) 804/262-1273
 GLASS CIRCA 1890-1960

PEG AND DALE GOTSCHALL
 Antiques, Cambridge and Other Quality Glass
 833 N. 6th St., Cambridge, Ohio 43725
 Phone 614/432-5529
 Stagecoach Mall — Bldg. 2 — Norwich, Ohio

GREEN ACRES FARM
 2678 Hazelton Etna Rd., Pataskala, OH 43062
 (State Route 310 North)
 Sat. & Sun. 1-7 PM 614/927-1882
Antiques, Crystal Glass and Collectibles

MOSTLY HEISEY
 16 Clayton Place, Albany, NY 12209
 Rhoda Curley 518 / 482-6272
SHOP and MAIL ORDER

THE HITCHING POST
 7467 S. R. 88
 Ravenna, OH 44266
 Ph. 216-296-3686 D. McDaniel
CAMBRIDGE — HEISEY — GENERAL LINE

BUY-SELL 513/390-3617
Taste of Honey
 Glassware—Collectibles
 CLARKE & CAROLE WEST 3433 Turner Dr.
 Springfield, OH 45504

1886 HOUSE
 East Schodack, N.Y. 12063
MAIL and SHOWS
 Laurie Cruise 518-477-5895
CAMBRIDGE - NORITAKE - AZALEA - D.G.

L & M ANTIQUES
 1331 S.E. 4th Ave., Pompano Beach, FL 33060
 Lydia & Cliff McNeil 305/943-2274
CAMBRIDGE & FOSTORIA OUR SPECIALTY
 Buy & Sell Shows Only

REMEMBRANCES
 7597 Daphne Dr., No. Syracuse, NY 13212
 Shirley S. Ladouceur 315 / 458-5297
 ANTIQUES and COLLECTIBLES
MAIL ORDER SHOWS APPOINTMENTS

MARGARET LANE ANTIQUES
 2 E. Main St., New Concord, OH 43762
 Lynn Welker 614/826-4418
CAMBRIDGE GLASS MATCHING SERVICE
 Hours Mon.-Fri. 1-5 PM or by Appointment

THE GLASS URN
 456 West Main Street, Suite G.
 Mesa, AZ 85201 602 / 833-2702
 Mail Order Shows Open Shop
CAMBRIDGE, FOSTORIA, HEISEY, ETC.

AL STEELE
 Westerville, Ohio
 614-882-6483 or 614-882-7124
 Mail Orders and Shows Only
HEISEY — CAMBRIDGE — PATTERN GLASS

SKYLINE DRIVE ANTIQUES
 5432 Skyline Drive, Cambridge, OH 43725
 Drew & Donna Davis 614 / 432-2621
SPECIALIZING IN CAMBRIDGE GLASS!
 Shows Mail Order Matching Service



The Jeff

Thursday, Feb. 19, 1987

Page 6

Stock offered in Glass House

Subscriptions for shares of common stock in Glass House Inc. are now being accepted, said Sam Stover, one of the organizers for the corporation.

Stover said articles of incorporation have been applied for to the office of the Ohio Secretary of State.

The purpose of the corporation will be to buy or lease the real estate formerly occupied by the Cambridge Glass Co. in order to develop that property for commercial and historical purposes.

Organizers of the company, which also include Kathryn Churchman and Philip Dollison, hope to raise \$50,000, said Stover. The subscriptions are \$50 per share with a minimum order of one share.

The money raised by the subscriptions will be placed in an escrow ac-

count until it is assured that \$50,000 will be raised, said Stover.

After the money is raised, Stover said, shareholders will elect a board of directors.

Although it will be for the board of directors to decide, some of the plans being considered for the property include the establishment of a skating rink, glass and pottery outlets, quality arts and crafts stores, a doll factory, a restaurant, factory outlets and a "living" glass museum, said Stover.

Those interested in buying stock should contact Stover at 685-3314.

After March 1, prospective buyers should call the office at the glass house, 432-7551, during the regular business hours of 8:30 a.m. to 5 p.m.

"Everyone is welcome (to invest)," said Stover. "We would like it to be community effort."

THIS ARTICLE IS REPRINTED HERE
"FOR YOUR INFORMATION."

National Cambridge Collectors, Inc.
P. O. Box 416 Cambridge, Ohio 43725

FIRST-CLASS MAIL
U.S. POSTAGE
PAID
So. Vienna, Ohio
45369
Permit No. 15

FIRST CLASS MAIL

12th Annual

**NATIONAL
CAMBRIDGE
COLLECTORS**

ANTIQUÉ SHOW & SALE

(& 14th Annual NCC Convention)

SHENANDOAH INN
INTERSTATE 70 · EXIT 186 · 7 MILES EAST OF
CAMBRIDGE, OHIO

JUNE 26, 27, 28, 1987

HOURS	
FRIDAY, JUNE 26th (PREVIEW ADMISSION \$3.50)	6:00-9:00
SATURDAY, JUNE 27th	11:00-5:30
SUNDAY, JUNE 28th (ADMISSION \$2.00)	12:00-5:00

OFFERING CAMBRIDGE AND OTHER FINE GLASSWARE
ALONG WITH A GENERAL LINE OF ANTIQUES

FOOD DOOR PRIZES PARKING

