


Cambridge Crystal Ball

Published monthly by the National Cambridge Collectors, Inc.
to encourage and report the discovery of the elegant and boundless product
of the Cambridge Glass Company of Cambridge, Ohio

Issue No. 186

October 1988

From The President's Desk

In reading through Cambridge Glass Co. documents, catalogs, price lists, etc., it soon becomes apparent that the "gremlins" who control typesetting or typing errors were working right alongside of the regular Cambridge office and factory work force.

The Cambridge Glass Company passed into history, but the gremlins certainly did not. Anyone who tried to call me last month, using the telephone number published in the CRYSTAL BALL, certainly knows what I am talking about. The number published was incorrect; a typographical error, made several months ago on another document, found its way into the September issue.

My correct phone number is: 305/221-0343, and the correction has been made on page 2 of this issue. I now have a telephone answering machine and if I can just remember to turn it on, my telephone will be answered regardless of whether I am at home or not. If you call, and reach the machine, please leave your name and number. I will return your call!

The subject of Memorial donations, of glass or other items, was discussed at the August Board meeting and it was agreed that all such gifts will be properly recognized by a card placed in front of the item, identifying the individual in whose memory the gift was presented and the donor. In addition, a letter will be sent to the family of the deceased, describing the gift and the name of the donor. Donating a piece of Cambridge

glass to the N.C.C. Museum of Cambridge Glass in memory of a relative or friend is an excellent way to perpetuate the memory of your loved one. As always, gifts to the Museum are tax deductible and a letter enumerating your gifts(s) will be sent for your files.

DON'T FORGET - the last Quarterly meeting of 1988 will be held on November 5th, at "The Upstairs," located at 632 Wheeling Avenue, Cambridge, Ohio. There will be a pay bar starting at 6 pm, followed by dinner at 7 pm, a business meeting at 8 pm, and following the business meeting a program "The Degenhart Story" will be presented by Erna Burris, Curator for the Degenhart Paperweight and Glass Museum, Inc., Cambridge, Ohio. A reservation form is enclosed in this issue. Please be sure to observe the deadline date of October 28th and return this form promptly. All members and their guests are urged to attend!

The MUSEUM will be CLOSED for the winter beginning the last day of October (31st), and will not reopen until the weekend of the 1989 Auction (February 25 & 26). Why not take advantage of the beautiful fall weather you have in Ohio, and pay a visit to our Museum before this closing date.

Sometimes I just can't seem to say "no," and last year I agreed to design and set up a Cambridge Glass display for the Lakeland

continued on page 13

Cambridge Crystal Ball

Official publication of National Cambridge Collectors, Inc., a non-profit corporation with tax exempt status. Published once a month for the benefit of its members.

Membership is available for individual members at \$13 per year and additional members (12 years of age and residing in household) at \$3 each. All members have voting rights, but only one *Crystal Ball* will be mailed per household.

Back issues of the *Crystal Ball* are available (beginning with Issue No. 1, May 1973) for members only. Cost: 60 cents each or 12 issues for \$7.

1988-89 Officers & Committee Chairpersons

President	Mark A. Nye
Vice-President	Cynthia A. Arent
Secretary	J.D. Hanes
Treasurer	William C. Smith
Sergeant-at-Arms	Marlene K. Snyder
Acquisition	Lynn Welker, Bill Smith, Mark Nye, Joy McFadden, J.D. Hanes
Budget & Finance	David B. Rankin
By-Laws	J.D. Hanes
Convention	Mark A. Nye
Membership	Phyllis D. Smith
Museum—Facilities	Willard P. Kolb
Museum—Interior	Lynn Welker, Janice Hughes, Marybelle Moorehead
Non-Glass Items	J.D. Hanes, Cindy Arent, Judy Momirov
Nominating	Willard P. Kolb
Program	R. Clarke West
Project	William C. Smith
Public Relations	William C. & Phyllis D. Smith
Publicity	Cynthia A. Arent
Study Group Advisor	Phyllis D. Smith
1989 Auction	Lynn M. Welker
1989 Antique Show	Joy R. McFadden
1989 Flea Market	Marybelle Moorehead
Crystal Ball Editor	Phyllis D. Smith

Classified Advertising Rates

10 cents per word \$2.00 minimum
We cannot mix type size in classified advertisements. Abbreviations and initials will count as words. Payment in full must accompany all ads.

Display Advertising Rates

(Camera-ready ads preferred)	Members	Non-Members
1/8 page (9 items)	\$ 6.00	\$10.00
1/4 page (20 items)	10.00	15.00
1/2 page (20 items)	18.00	25.00
3/4 page	25.00	35.00
Full page (50 items)	33.00	45.00

Dealers Directory

Five-line maximum \$18.00 for 12 months

Cambridge *Crystal Ball* assumes no responsibility for items advertised and will not be responsible for errors in price, description or other information.

Advertising copy, articles, club news and notices must be in our hands by the 10th of each month to assure publication in our next issue.

Paid advertisements containing reproductions or new glass will not knowingly be accepted for publication.

Opinions or information stated in any signed article or letter printed in the *Crystal Ball* are those of the authors and may or may not agree with National Cambridge Collectors, Inc. The Editor reserves the right to refuse and to edit any material submitted for publication so as to conform with the editorial style of the *Crystal Ball*.

Please Address All Correspondence to:

National Cambridge Collectors, Inc.
P.O. Box 416 Cambridge, Ohio 43725

President — Mark A. Nye, 305/221-0343

Secretary — J.D. Hanes, 614/432-6794

Editor — Phyllis Smith, 513/323-3888

Please notify us immediately of any change in your address.

Please enclose an SASE when requesting information.

CAMBRIDGE GLASS BOOKS FOR SALE

by National Cambridge Collectors, Inc.

* **COLORS IN CAMBRIDGE GLASS**
(128 pages - 60 color plates - fully indexed)
Hardbound with Price Guide \$19.95

* **1930-34 CAMBRIDGE GLASS CO. CATALOG REPRINT**
(250 page reprint of original catalog)
Hardbound with Price Guide \$14.95

* **1956-58 CAMBRIDGE GLASS CO. CATALOG REPRINT**
(164 page reprint of original catalog)
Paperback \$6.95

1985 COMBINED PRICE GUIDE
for 1930-34 & 1949-53 catalog reprints Postpaid \$5.75

*NCC MEMBERS ONLY: *These publications are available at 10% discount*

by Bill & Phyllis Smith

CAMBRIDGE GLASS 1927-1929
(66 page reprint of original catalog)
Paperback with Identification Guide \$7.95

by Mark Nye

CAMBRIDGE STEMWARE
(95 Stemware lines with 107 illustrations)
Paperback \$14.95

by Cambridge Buffs Study Group

NEARCUT
(108 page reprint of 1910 Cambridge Catalog)
Paperback with Price Guide \$9.95

by Mary, Lyle and Lynn Welker

CAMBRIDGE GLASS CO.
(120 pages of reprint from 8 old catalogs)
Paperback \$6.95

CAMBRIDGE, OHIO GLASS IN COLOR II
Spiralbound \$5.95

by Harold and Judy Bennett

1903 CAMBRIDGE GLASS CO. CATALOG REPRINT
(106 page reprint of an original catalog)
Paperback \$7.50

Address your orders to:

BOOKS
National Cambridge Collectors, Inc.
P.O. Box 416
Cambridge, OH 43725

Please add \$1.00 (P & I) per order.
(Not required for Price Guide)

Ohio residents please add 6% state sales tax.

DEALER DISCOUNTS AVAILABLE - PLEASE WRITE!

NCC Museum of Cambridge Glass

The museum is located on U.S. Route 40, one-eighth mile east of I-77 near Cambridge. Hours: 12 noon to 4 p.m., Wednesday through Sunday (March through October). Phone 614/432-4245.
Closed Easter and July 4th.

OPAQUE COLORS

by MARK A. NYE

(EDITOR'S NOTE: This article is continued from the September 1988 CRYSTAL BALL.)

It was 1924 that saw the introduction of two more opaques, Jade and Ivory. However, trade journals from that year did not give the attention to these colors that had been given to previous Cambridge colors.

Jade has been described as "a medium green opaque having a soft appearance. Shading of the color trends toward the blue side of the spectrum rather than toward the yellow. It will sometimes be found with lighter (almost white) streaking through the piece."

"Ivory is a light cream opaque very similar to the material from which its name was derived. Colors of this hue by Cambridge and other companies are commonly called 'Custard' but the correct Cambridge name is Ivory. The light hue of this color made it ideal background base for many of the applied decorations of this time period." Hence it will be found with many decorations including the Willow etching encrusted with blue enamel. Jade will be found decorated in much the same manner as Azurite.

". . . Other tables and shelves show groups of the lovely colored glass for which the Cambridge Glass Company is justly famous. The newest colors are a lovely opaque yellow called Primrose, which is complete without decoration because of the color and the good lines of the pieces -- although it is available with gold encrustations, if it is wanted that way, and a soft Ivory which was brought out the first of this year, which is made the more attractive by encrustations of gold." From the column "New York Trade Notes" written by Jane Littell and published April 7, 1924.

Even though there were new Cambridge opaque colors for 1924, Azurite and Ebony continued to be popular as witnessed by this article, quoted here in part, appearing in the January 14, 1924 issue of China, Glass and Lamps: "When such a wealth of beauty as in the display of the Cambridge Glass Co. of Cambridge, O., stares the reporter in the face, it is hard to pick the most distinctive things to write about. The Cambridge display is in Room 728 at the Fort Pitt Hotel. Here

was a compote set in Azurite -- that lovely bright blue -- done in the Wedgewood manner, with the embossment and the ram's head handles we have always associated with the Wedgewood earthenware patterns known as Belmar. Candlesticks with square top and base matched the bowl."



Cambridge RAM'S HEAD Bowl and matching Doric Candlestick



"Here also was mottled gold and colored line of five colors, with gold edge line on all pieces, and a black glass base for some. Especially good was a line of black glass with gold encrusted fleur-de-lis design in wide bands, and some black vases with encrusted gold borders an inch and a half wide"

Under the somewhat unusual headline of "Cambridge Glass Co. has new Numbers" Glass Journal had this to say in November 1924: ". . . Other interesting new numbers of perfume bottles in new shapes, tall and slender. These come in ivory, jade, cobalt, ebony black, helio, azurite blue and primrose with yellow gold or white gold encrustations in band effect. These come also in various transparent and sprayed colors, all novelties which make a strong appeal, especially to holiday and general gift trade."

After 1924, the major trade journal contained no mention of the Cambridge opaque colors with the exception of Ebony which from time to time was referenced. Another exception is a brief mention, quoted below, of a color that may or may not be an opaque:

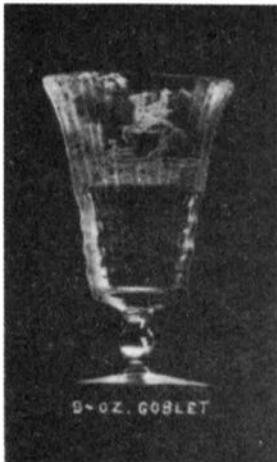
"Another new glass is the 'Onyx' which is a light tan shade with or without decorations."

continued on next page

OPAQUES continued from page 3

It is the last words "with or without decorations" that lead me to feel this might be an opaque color. At this time no other information about this color has surfaced.

There was one other Cambridge opaque color during the 1920s and it is the one today's collectors have named "Avocado." Quoting from Colors In Cambridge Glass by N.C.C., Inc., "Avocado is a rich green opaque that tends toward the yellow side of the green spectrum. The name 'Avocado' has been affixed to this color by collectors of Cambridge Glass. No reference to the name has been found in any trade publication or company literature. The shapes found lead us to believe that it had limited production in the 1927-28 time period." The reader is referred to Plate 26 in Colors In Cambridge Glass to see both the color and some of the shapes found in this color. The shapes include items from both the Round and Plain ware lines. A goblet in this color, etched Imperial Hunt Scene and then gold encrusted is known and illustrated in the previously mentioned book.



While no definite date for the discontinuance of this group of opaque colors has been established, based on the shapes and decorations found as well as the absence of trade journal references, it would appear they were no longer in the Cambridge line by the late 1920s and most certainly by 1930. The one exception to this being Ebony which was carried in the Cambridge line until at least the initial plant closing in 1954.

In late summer 1932, the color Crown Tuscan was introduced. Described at the time as an "opaque glass with its rich cream-like color," Crown Tuscan was featured in two articles published in the February and March 1986 issues of the CRYSTAL BALL and the reader is referred to those articles for a discussion of this color. Crown Tuscan did remain in the Cambridge line until the plant closing in 1954. In 1935 the color Coral appeared as one of the colors used for the Sea Shell line. It is generally believed this is not a unique color; rather, Crown Tuscan with a new name that

sounded better with the Shell line. By 1949 the Coral name had been dropped and the remaining items in the Shell line were listed in Crown Tuscan.

During July 1937, the color Windsor Blue was brought out. Again, quoting from Colors in Cambridge Glass:

"Windsor Blue . . . is a tone of icy blue in opaque glass used predominately in the Sea Shell line. A few exceptions have been found in other lines, such as the Tally-Ho shaker . . . Extensive research has yielded no additional information on this color."

Windsor Blue is paler than Azurite and is sometimes described as "blue milk glass." It was apparently a short lived color and is infrequently seen today.

In the early days of 1954, two new opaques were brought to market, Milk and Ebon. These were recently covered in articles dealing with the 1950s published in the months preceding the 1988 N.C.C. Convention. Both Ebon and Milk were short lived as their production did not resume with the plant reopening in 1955. Enough production did occur, however, that samples of either color are readily obtainable today.

A collection containing examples of all the production opaque colors discussed here can be assembled with diligent searching and without great expense. Some will be more difficult to find than others, Azurite probably being the easiest to locate with the early Ebony being one of the hardest.

Two other opaque colors must be mentioned prior to closing and those are Opal and Turquoise from the first years, circa 1903. Samples of these colors are rarely seen and somewhat difficult to attribute to Cambridge when found. The reader is referred to the book Colors in Cambridge Glass, published by the N.C.C., Inc., for more information on these colors.

(EDITOR'S NOTE: See page 2 of this issue for information on how you may obtain a copy of the book Colors in Cambridge Glass. Back issues of the CRYSTAL BALL mentioned in this article may also be ordered by our members at a cost of 60¢ each. Mail your order, along with your check, to: N.C.C., Inc., P.O. Box 416, Cambridge, OH 43725.)

Circular Letter No. 188

August 26, 1939

CIRCULAR LETTER #188
TO ALL AGENTS:

POTASH ROCK CRYSTAL

We have developed a new quality of glass which will be known as Potash glass. This is a fine grade of white glass with a slight metallic ring to it.

We are making this glass in a variety of heavy weight blanks for deep mitred cuttings. Some of this type of glass was formerly imported from Czecho but this has now all been shut off so you will find a good field for American made glass of this quality and this type of cutting.

Our prices, while slightly higher, are so very near the Czecho prices that it makes the proposition especially attractive due to the fact the glass is all produced in this country and there is no waiting for deliveries such as on European glass.

We displayed this glass at our Chicago Show, as well as at our Philadelphia Show, and at both places it received a most favorable response in the way of orders.

The complete line consists of 27 pieces. We have had it photographed and are sending you by separate mail, a set of these photographs. You will notice that in the 27 pieces, there is a good collection of vases, bowls, comports, relishes and candy boxes, which are the principal items for a line of this type.

Upon careful inspection of the photographs you will find there are four different types of cuttings, assorted in these 27 pieces. The photograph shows just exactly the way each piece will be cut and shipped. Please bear in mind this is not a Rock Crystal pattern such as our other lines where stemware is made to match up with the flatware pieces. On the other hand, this is strictly a proposition of individual items that are especially attractive for gift purposes.

In other words, the merchant can set up these 27 pieces on a table in his store and made a most attractive display. From these 27 pieces most any customer will be able to select a gift or a piece for their own use, as you will see from the photographs there is a very attractive selection of pieces, as well as a variety of attractive cuttings, so that something in the display is bound to attract the eye of every purchaser.

We have made these 27 pieces up into three different propositions or collections. The first collection is the 27 piece collection shown by the five pages of photographs. This is the manner in which you always want to try to sell this proposition. Try to get the customer to buy the 27 pieces at a net price of \$116.00.

Failing in this, then try the 15 piece collection at a net price of \$69.00. This is the one as shown by the three-page photograph.

There may be some customers for whom this is a little too large, so we have made another collection of 12 pieces which can be sold at a net price of \$47.00 and this is shown on the two-page photograph.

Of course, you will have some trade that is too small to buy even a 12 piece
continued on next page

C/L #188 - 8/26/39 - page 2

collection in this instance selections may be made from any of the items at the net prices shown on the list.

Those prices are all Net, as we feel on a proposition of this kind, it would be better to make net prices rather than list. In buying any of the three assortment or collections, the customer will save about 5% as in figuring the assortments, we are making about a 5% better price than where the items are purchased as separate pieces.

Today, we are sending you a couple of sample pieces with the photographs so that you may immediately start to selling this line.

If there is any further information required please advise us immediately.

Yours truly,
THE CAMBRIDGE GLASS COMPANY
W.C. McCartney

mj

C/L #188 - 8/26/39 - page 3

POTASH ROCK CRYSTAL

			Per Doz.
500/1	8"	Ftd. Rose Bowl	\$ 66.00
500/2	8"	Flip Flower Holder	60.00
500/3	11"	Flower Holder	54.00
500/4	11"	Flower Holder, Ftd.	60.00
500/5	11"	Flower Holder	60.00
500/6	11"	Flower Holder, Ftd.	69.00
500/7	10"	Hdl. Flower Holder	52.00
500/8	14"	Plate	69.00
500/9	7"	Tall Comport	50.00
500/10	10"	Bowl	59.00
500/11	12"	Bowl	56.00
500/12	11"	Ftd. Bowl	58.00
500/13	10"	Cheese & Cracker	59.00
500/14	7"	Candy Box & Cover, 3 part	59.00
500/15	6"	4 pc. Salad Dressing Set	58.00
500/16	9"	4 part Hdl. Relish	42.00
500/17	10"	5 part 2 Hdl. Relish	48.00
500/19	5"	Tall Candy Box & Cover, Ftd.	44.00
500/20	8"	3 part Relish, Hdl.	46.00
500/21	7"	Rose Bowl	54.00
500/22	9"	Ftd. Flower Holder	49.00
500/23	8"	Flower Holder	58.00
500/24	11"	Celery Tray	43.00
500/25	7"	Candy Box & Cover	46.00
500/26	6"	Candy Box & Cover	50.00
500/27	6"	Tall Comport	37.00
500/28	7"	Ftd. Rose Bowl	60.00

27 piece Collection (1 each of above items)

\$116.00

Per collection

Prices Net

C/L #188 - 8/26/39 - page 4

POTASH ROCK CRYSTAL

			Per Doz.
500/1	8"	Ftd. Rose Bowl	\$ 66.00
500/2	8"	Flip Flower Holder	60.00
500/4	11"	Flower Holder, Ftd.	60.00
500/5	11"	Flower Holder	60.00
500/6	11"	Flower Holder, Ftd.	69.00
500/7	10"	Hdl. Flower Holder	52.00
500/8	14"	Plate	69.00
500/9	7"	Tall Comport	50.00
500/11	12"	Bowl	56.00
500/12	11"	Ftd. Bowl	58.00
500/13	10"	Cheese & Cracker	59.00
500/14	7"	Candy Box & Cover, 3 part	59.00
500/15	6"	4 pc. Salad Dressing Set	58.00
500/17	10"	5 part 2 Hdl. Relish	48.00
500/25	7"	Candy Box & Cover	46.00

15 Piece Collection (1 each of above items) \$ 69.00

Per Collection

or \$4.75 per piece
Prices Net

C/L #188 - 8/26/39 - page 5

POTASH ROCK CRYSTAL

			Per Doz.
500/3	11"	Flower Holder	54.00
500/10	10"	Bowl	59.00
500/16	9"	4 part Hdl. Relish	42.00
500/19	5"	Tall Candy Box & Cover, Ftd.	44.00
500/20	8"	3 part Relish, Hdl.	46.00
500/21	7"	Rose Bowl	54.00
500/22	9"	Ftd. Flower Holder	49.00
500/23	8"	Flower Holder	58.00
500/24	11"	Celery Tray	43.00
500/26	6"	Candy Box & Cover	50.00
500/27	6"	Tall Comport	37.00
500/28	7"	Ftd. Rose Bowl	60.00

12 piece Collection (1 each of above items) \$ 47.00

Per collection

or \$3.95 per Piece
Prices Net

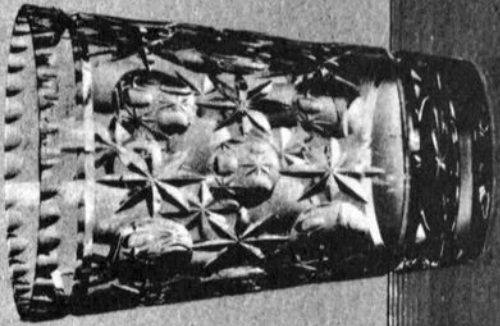
EDITOR'S NOTE: The Cambridge Glass Co. used the Circular Letter format to announce many of the production changes and sales promotions that were introduced from time to time. These letters, which often were accompanied by catalog pages, were sent to all of their regular agents and salesmen. For those who maintained catalogs of the Cambridge wares, the additional catalog pages were added as supplements and the letters could also be used to denote the discontinuance of certain items, colors, etc. A letter such as this would also have been used to introduce the "De-luxe Crystal Celestial (600)" shown in the September 1988 CRYSTAL BALL.



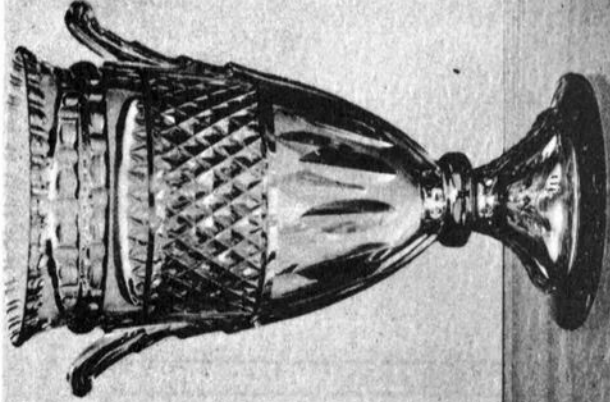
The Cambridge Glass Company



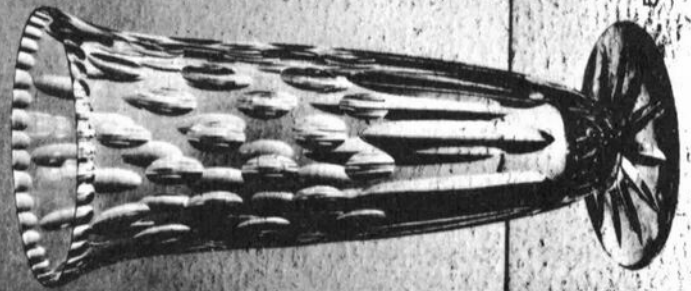
**DE-LUXE CRYSTAL
WINDSOR (500)**



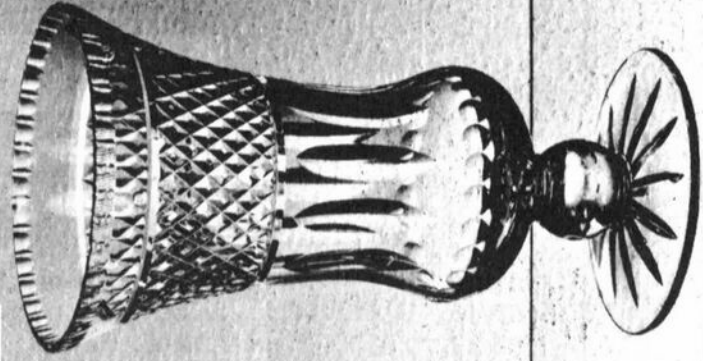
500/2—8 in.
Flip Flower Holder



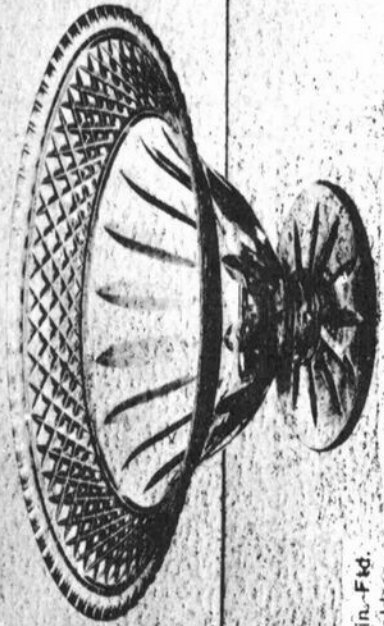
500/7—10 in.
Hid. Flower Holder



500/5—11 in.—Fkd.
Flower Holder



500/6—11 in. Ftd. Flower Holder

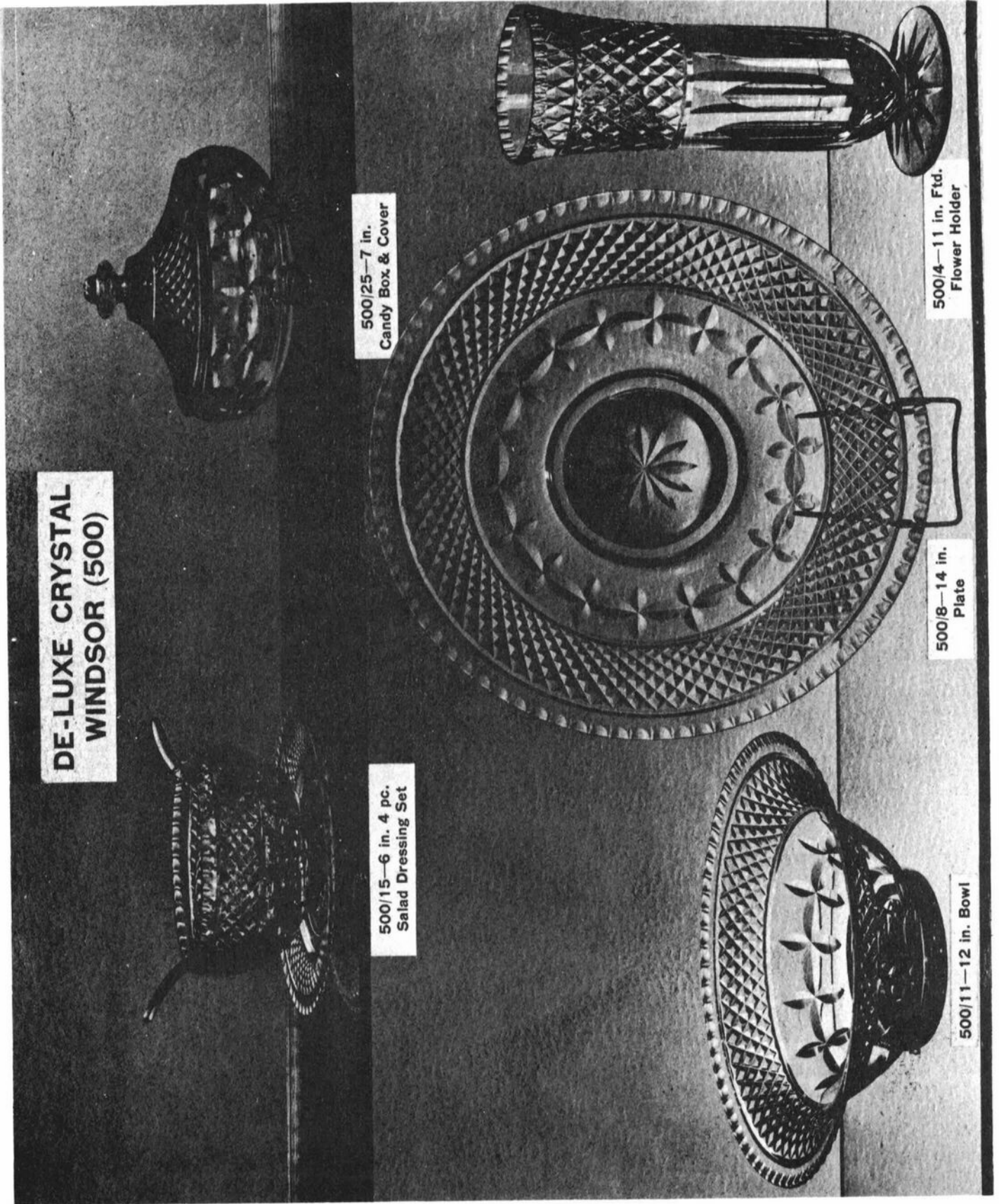


500/12—11 in. Ftd. Bowl

Cambridge, Ohio - - - U. S. A.



The Cambridge Glass Company



DE-LUXE CRYSTAL WINDSOR (500)

500/25—7 in.
Candy Box & Cover

500/15—6 in. 4 pc.
Salad Dressing Set

500/8—14 in.
Plate

500/4—11 in. Ftd.
Flower Holder

500/11—12 in. Bowl

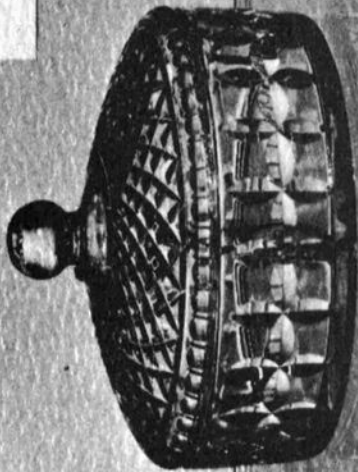
Cambridge, Ohio - - - U. S. A.



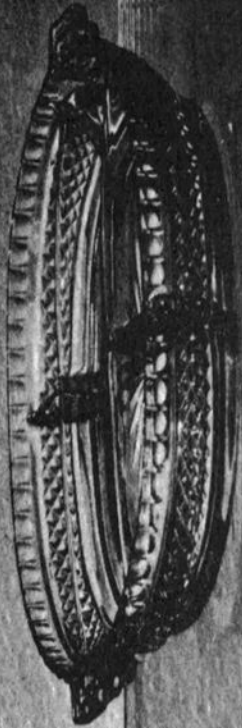
The Cambridge Glass Company



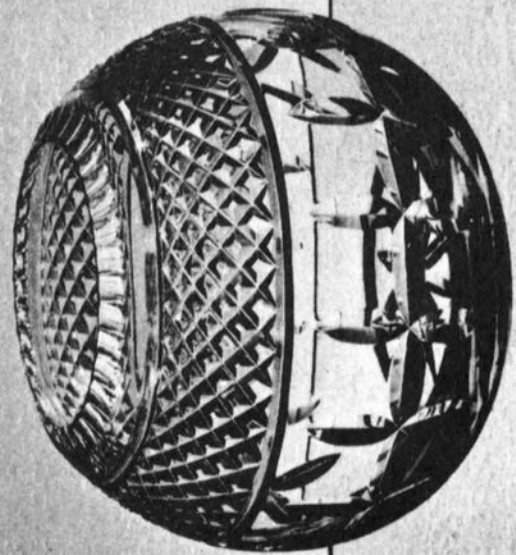
DE-LUXE CRYSTAL WINDSOR (500)



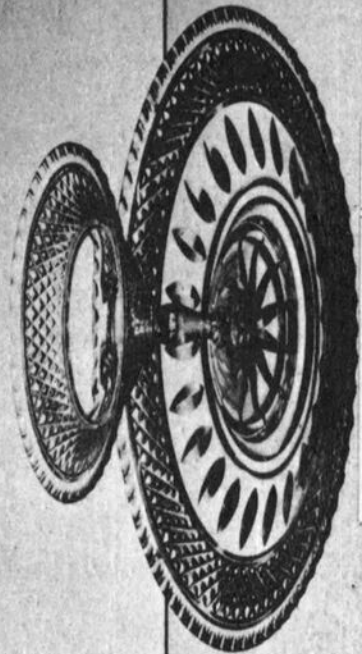
500/14—7 in.
Candy Box & Cover



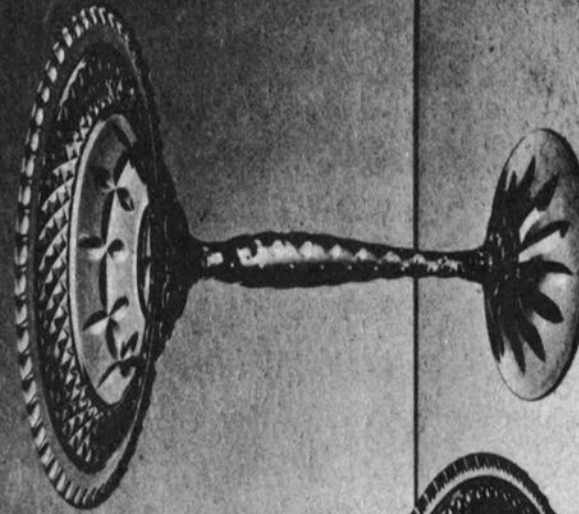
500/17—10 in. 5 Part
2 Hld. Relish



500/1—8 in. Rose Bowl



500/13—10 in. Cheese & Cracker



500/9—7 in. Tall Compote

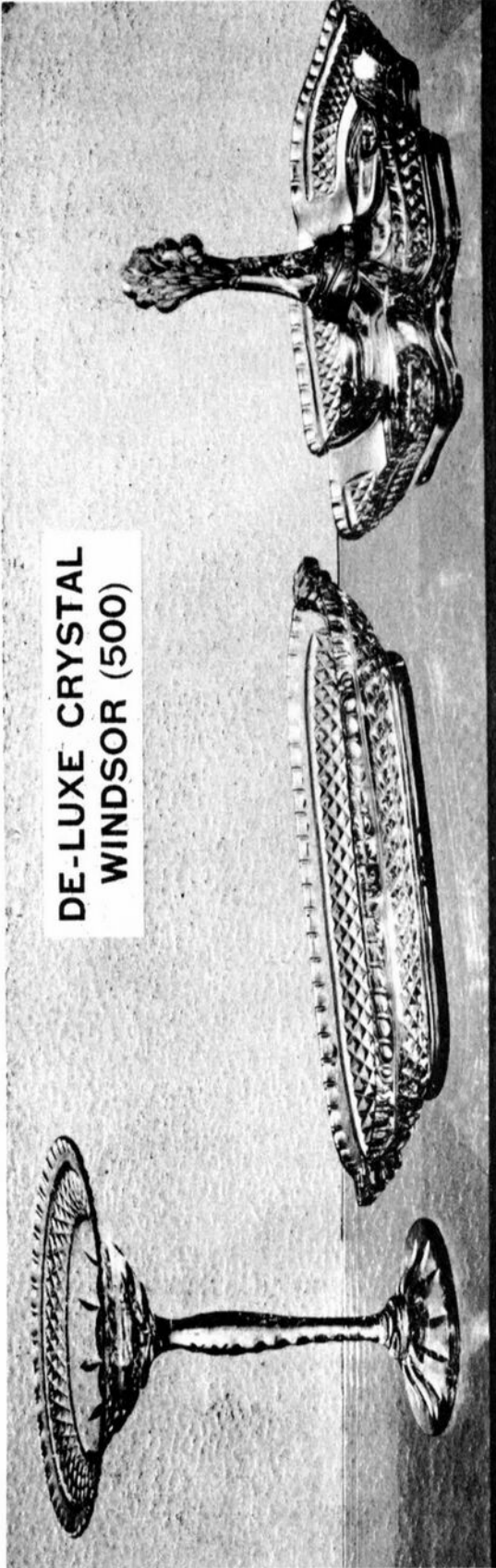
Cambridge, Ohio - - - U. S. A.



The Cambridge Glass Company



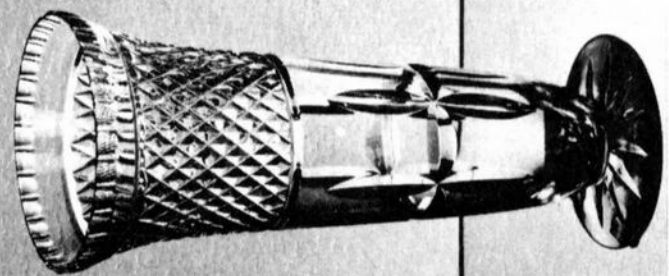
DE-LUXE CRYSTAL WINDSOR (500)



500/27—6 in. Tall Compot

500/24—11 in. Celery Tray

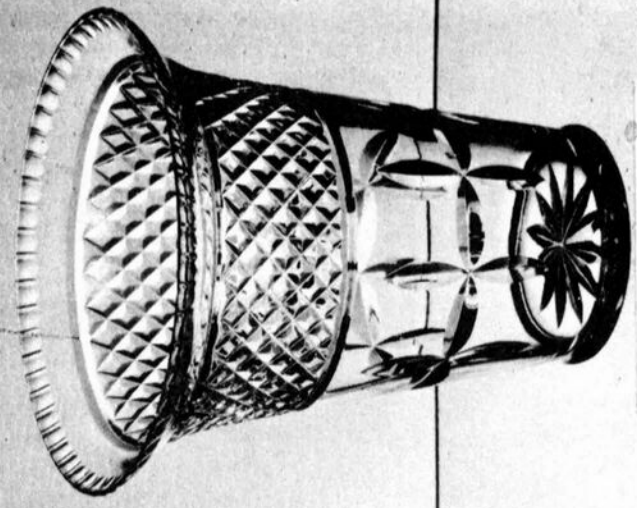
500/16—9 in. 4 Part Hld. Relish



500 22—9 in. Ftd. Flower Holder



500.10—10 in. Bowl



500.23—8 in. Flower Holder

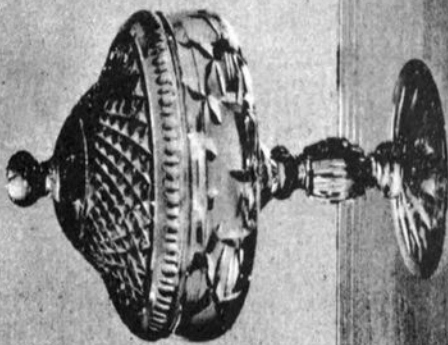
Cambridge, Ohio - - - U. S. A.



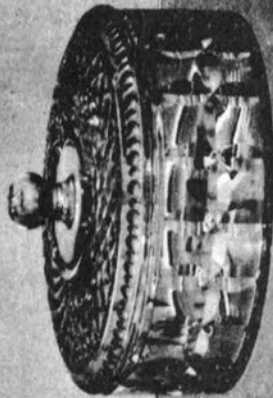
The Cambridge Glass Company



DE-LUXE CRYSTAL WINDSOR (500)



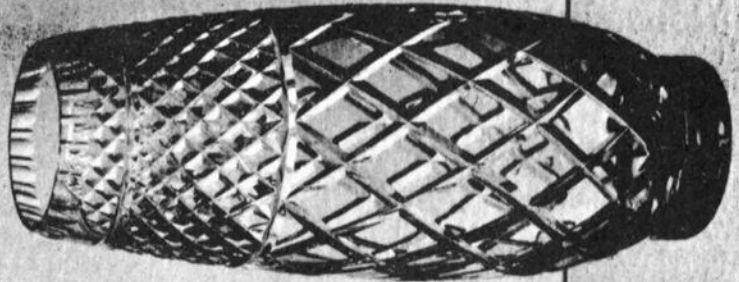
500/19—5 in. Tall Ftd.
Candy Box & Cover



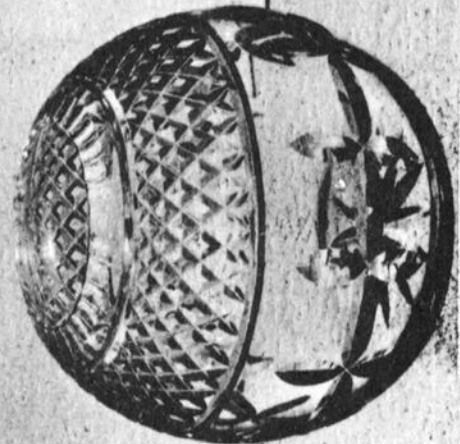
500/26—6 in. Candy Box & Cover



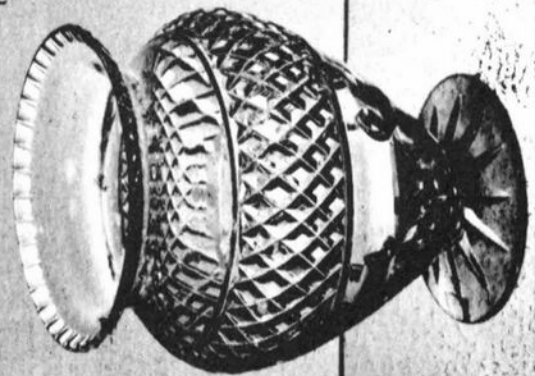
500/20—8 in. 3 Part Hld. Relish



500/3—11 in. Flower Holder



500/21—7 in. Rose Bowl



500/28—7 in. Ftd. Rose Bowl

PRESIDENT'S DESK. . . continued from page 1

Florida D.G. Show, sponsored by the Central Florida Glassaholics. To complete the Cambridge theme, Bill and Phyllis Smith were invited to be guests at the show. The show was held in early September and the Smith's, my display, and yours truly were all there!

After much thought, I decided to set up a number of tables showing items that might have been seen at the Pittsburgh trade shows during the years that Cambridge was in business. Each table represented a single year and on each table was a sign stating the year, the hotel where the show was being held, and the room in which the Cambridge display was located. The display tables included: Cleo on light emerald blanks representing 1929; crystal Caprice for 1936; Chantilly in 1939; the opaque colors as they might have been seen in the Fort Pitt Hotel January 1924; Cambridge Arms for the 50th Anniversary year of 1951; and a table of Nearcut items that could have been on display at the Fort Pitt Hotel in January 1910. No easy task to set up such a display! It actually took me as long to set it up as it did many of the dealers to prepare their booths.

I was able to acquire two unusual pieces of Cambridge at the show. A 5 oz. footed tumbler from the #3121 line in gold krystal etched Wildflower; and a 10 $\frac{1}{4}$ " Block Optic vase in rubina. In addition, I added several other items to my stemware collection.

It was a pleasure to have Bill and Phyllis come to Miami after the show, even if it was only for a short stay. We spent one day driving to and from Key West where we visited the Mel Fisher Museum of artifacts recovered from the wreck of the Spanish treasure ship Atocha. If you are ever in Key West, a visit to this Museum is well worth the admission price and your time.

We here in South Florida were quite fortunate in that we were spared the terrible forces of Hurricane Gilbert. The Florida Keys are so vulnerable, and in 1935 did experience the forces of such a storm . . . a storm that brought an end to the overseas railroad, originally built by Henry Flagler, connecting Miami and Key West.

See you at the November Quarterly Meeting! Until then, Collect Cambridge.

Study Club News

STUDY GROUP #10 - LONG ISLAND, NY "THE TUSCAN CROWNS"

The Tuscan Crowns Study Group met on Thursday evening, June 9th at the home of member Rita Berg of East Patchogue.

The meeting centered on a discussion of ideas for a future fund-raiser. No decision was reached.

"Show & Tell" included: a signed Windsor blue Shell compote; a Tally-Ho fruit bowl with Diane etching; a moonlight blue prism style Cambridge sign; a #3121 stem candlestick with bobèche and prisms; a Rosepoint etched hat; a Rosepoint mustard jar; a yellow Gloria vase; a blue Cleo bowl with wicker handle; a pressed Rosepoint royal blue goblet; a crystal Nude stem ashtray; an amethyst vase with paper label; and an amethyst #3400 pitcher in Farber holder.

Among the many refreshments served, was Mrs. Berg's famous cheesecake - which was appreciated by all who attended.

There were no meetings in July and August.
submitted by Rosemary Rose

STUDY GROUP #13 - SOUTH WEST OHIO "MIAMI VALLEY, OHIO"

The Miami Valley Study Group held their September meeting at the Huber Heights Library on Tuesday evening, September 13th. There were nine members and three guests present.

Our study club name "Miami Valley, Ohio" was voted and approved by the members. At our next meeting we will form a nominating committee for election of officers to be held in November.

Two of our guests, Faith Backs and Millie Shanks (they are sisters), shared several pieces of Cambridge with us. Their father worked at the Cambridge Glass Company. We also welcomed Amy Jo Jones who recently moved to our area from North Dakota.

continued on page 14

Study Club News

MIAMI VALLEY continued from page 13

"Show & Tell" consisted of: a #3121 goblet with Achilles cutting; a cocktail shaker with King Edward cutting; a pair of Chantilly etched salt and pepper shakers; and a Rubina low footed comport.

Program was presented by Frank Wollenhaupt. There were approximately thirty candlesticks on display and we were given a "test" on our knowledge.

Our next meeting will be held October 11th. Our November meeting will be held on the 1st Tuesday (November 1st) instead of our regular second Tuesday date. Our December meeting will be a Christmas dinner, place to be announced later. Visitors are always welcome.
submitted by Vicki Wollenhaupt

STUDY GROUP #14 - CAMBRIDGE, OHIO
"THE CAMBRIDGE CORDIALS"
Contact person - Judy Momirov
Phone: 614/432-2896

The August 20th meeting of the Cambridge Cordials was another organizational type, to decide what direction we want to take. Cindy Arent was elected Group Leader. Monthly discussion leaders will be whoever is the host of the meeting. It was decided that one of our main projects will be the cleaning of molds, etc., in the storage building.

Other topics discussed were of a fund-raising nature and ideas for future topics for our meetings. Dates for meetings and locations were also discussed.

After the meeting adjourned, all members spent time viewing the glass in the N.C.C. Museum. Afterwards we moved to "Ted's Tivoli Palace" for refreshments.

Next meeting will be held on September 17th at the N.C.C. Museum. The topic will be the "History of Cambridge Glass." The October meeting will be at the home of Judy Momirov.

The September 17th meeting of the Cambridge Cordials was held in the storage building of

the N.C.C. Museum at 4 pm. The purpose of the meeting time and place was to work on the cleaning and identifying of molds owned by N.C.C.

Needless to say, this is dirty work, but at the same time it is also fun and a great learning experience. Some unique molds discovered, at least to us, were: the Caprice Reflector candlestick; the #3500 4-piece tumbler tray; the Table Architecture flower block; the #3400/67 divided dish; and the #3500/464 small Urn cover. All in all, approximately 165 molds and parts were inventoried.

We sent out for dinner of pizza, subs and pop, and spent dinner time discussing different aspects of the molds and certain contradictions in the history of them. One item being that we thought most of the Nearcut molds had been destroyed during WWII, but we did find a mold for Nearcut which was marked 556 or 566, it was not real clear.

Our next meeting will be held at the home of Judy Momirov on October 15th. The subject will be "History of Cambridge Glass and of Mr. A.J. Bennett."
submitted by J.D. Hanes



NOVEMBER QUARTERLY MEETING
and CHRISTMAS - are coming!

Program Chairman Clarke West has announced that the program for the November Quarterly Meeting will be presented by Erna Burris, Curator for the Degenhart Paperweight and Glass Museum. The topic is "The Degenhart Story." Please return your reservation form by the deadline date of October 28th.

If you cannot make it for dinner, please feel free to attend the meeting, etc. Just write "Meeting Only" on your form, along with your name(s). This way we will know how many extra chairs to provide.

As for Christmas . . . be sure to watch for next months issue of the C.B. Your Cambridge "Christmas Shopping List" will be included!

— Classified —

BUYING: Moonlight Caprice or Rosepoint by Cambridge; Rose or Orchid by Heisey; & June, American, Fairfax, Versailles, Trojan, etc., by Fostoria. **Nadine Pankow**, 207 South Oakwood, Willow Springs, IL 60480. 312/839-5231.

FOR SALE: Ebony #3500 13" hdd. tray, small scratches, \$25. Emerald green Apple Blossom etched #627 candlesticks, pair, \$35. Willow blue Cleo etched #847 ice tub \$40. Ebony 8-1/2" swan, signed, \$175. #3400/27 tumblers in Farber holder (2) royal blue, (1) carmen, all three pieces \$32. UPS Extra. **Robert Taylor**, 80 Middle Street, Apt. 21, Gloucester, MA 01930. Phone: 508/281-4637

WANTED: To hear from other Royal Blue collectors. Send me a copy of your want and duplicate lists. For Sale: #3011 mandarin gold cocktails (6) \$80 each. #3011 ebony stem cocktails (3) \$70 each. #3011 carmen compotes, (1) flared (1) cupped, \$145 each. #3011 crystal 5 oz. roemer \$120. #3011 mandarin gold brandy (3) \$70 each. Gold encrusted Rosepoint 10" keyhole vase \$150. Gold encrusted Wildflower 8" 3-section covered dish \$70. Gold encrusted #647 candleholders, pair, \$100. Carmen Farberware cocktails (8), will sell or trade for same in royal blue. Postage extra. **Bryce S. Crumb**, 1573 Alexandria Drive, Apt #6, Lexington, KY 40504.

FOR SALE: #3122 Diane etched: 7-1/4" goblets (11); 5" juices (12); sherbets (8); 6-1/4" underplates (5). Make offer. **Barbara Jennings**, 134 Garden Parkway, Henrietta, NY 14467.

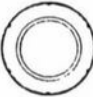
WANTED: Perfect peachblo/dianthus pink bridge hounds. Also amber, amethyst and blue. **Mike Westerfield**, 6336 N. Frostwood Parkway, Peoria, IL 61615.

WANTED: Cambridge Elaine pieces. Particularly interested in: dinner plates, bread and butter plates, 12" footed plates, 13" torte plates, and cake plates. Other pieces: mayonnaise set, flower vases, hurricane lamp, 2 or

continued next column

— Classified — continued

3-lite candlesticks, jugs, cigarette box, cheese and cracker tray, cocktail shaker, and other unusual pieces. Contact **Alice Katz**, 3722 Gold Ridge Road, Eau Claire, WI 54701. Phone: 715/832-7719.



REPLACEMENTS, LTD.
302 Gallimore Dairy Road CB
Greensboro, NC 27409-9723
(919) 668-2064

Discontinued China & Crystal

WORLD'S LARGEST INVENTORY!
Over a million pieces of bone china, earthenware, and crystal.
Call or write today... (SASE please).

REPLACING THE IRREPLACEABLE BUY & SELL	Lenson	Spewle	Gorham
	Oxford	Fostoria	Cambridge
	Wedgwood	Heisey	Minton
	Tiffin	Syracuse	Castleton
	Franciscan	Haviland	Flintbridge
	Noritake	Mikasa	Royal Worcester
	Royal Doulton	Duncan	Franconia Etc.

* **auction** *

ALL-CAMBRIDGE GLASS

Saturday, February 25, 1989
PREVIEW 9:30 AM - AUCTION 10:30 AM
at
THE SHENANDOAH INN
Old Washington, OH 43768
614/489-5511

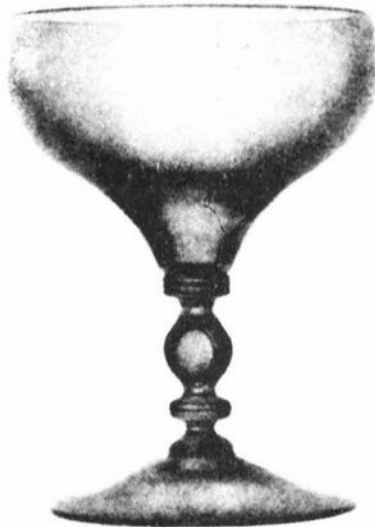
Auction Chairman Lynn Welker is busy listing and preparing the "1989 All-Cambridge Glass Auction" catalog, which will be enclosed with your January 1989 issue of the CRYSTAL BALL. This annual event is one that you will want to attend - and now is the time to mark your calendar and make your reservations!

Be sure to include in your plans, our February Quarterly Meeting, which will be held on Friday evening, February 24th, beginning at 8 PM. An informative meeting will be presented, along with "Show & Tell," and a preview of the Auction glass.

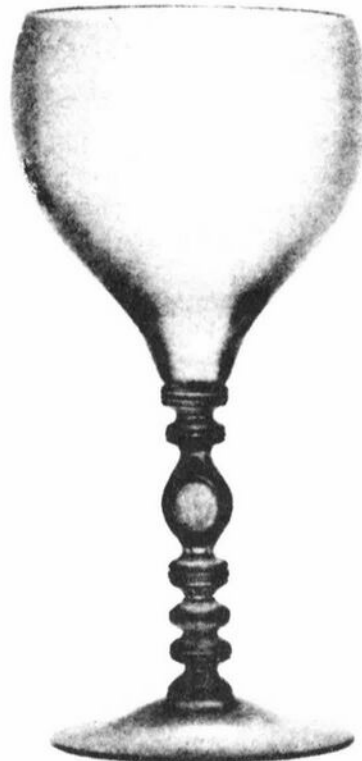
For additional information write to: Lynn Welker, N.C.C. Auction Chairman, 2 E. Main St., New Concord, OH 43762.



Claret



Low Sherbet



Goblet

CAMBRIDGE TALLY-HO

Gold Silk Screen Decorated Tally Ho #1402/100-D/1007 in Rare Amber Bowl with Crystal Stem and Foot. This may be your last chance to ever buy a service for eight in these beautiful Goblets, Sherbets and Clarets. Other pieces available. \$1195.00 Delivered.

8 Clarets 8 Low Sherbets 8 Goblets

\$1195.

Mostly Heisey

16 CLAYTON PLACE ALBANY, NEW YORK 12209 518-482-6272

CLASSIQUE GLASS CO.

Box 52572, Tulsa, OK 74152
918/744-5409

ANIMALS, FLOWER FROGS, SWANS

Scotty Bookends, pair.....	\$ 140
Pouter Pigeon (1).....	65
8½" Draped Lady pink/green.....	145
8½" Rose Lady, pink.....	175
8½" Rose Lady, amber.....	225
13" Draped Lady, frosted amber....	250
8½" Swan, frosted, gold trim.....	60

CAPRICE - Crystal

#167 covered, ftd. Candy.....	\$ 36
#300 Champagne/Sherbets (3).....	14
#28 alpine 14" 4-ftd. Plate.....	55

CAPRICE - Blue

#122 8" 3-comp. Relish.....	\$ 38
#124 alpine 3-comp. Relish.....	48
#130 7" ftd. low Comport.....	35
#65 11" hdd/ftd. oval Bowl.....	75
#4 tall Sherbet, molded (4).....	36
#92 ind. Salt/Pepper - 1 lid missing - so, Set.....	65

CAPRICE - Pink

Cup.....	\$ 25
#184 12 oz. Tumbler.....	60
#41 Sugar.....	20
#61 12½" crimped ftd. Bowl.....	70

CAPRICE - Gold

#65 11" hdd/ftd. oval Bowl.....	\$ 62
---------------------------------	-------

CASCADE - Gold

Vase.....	\$ 45
-----------	-------

DECAGON - Amber

8 place settings consisting of:	
8" Plate, Cup, & Saucer.....	\$ 120
8" Plates (extra) (4).....	7
Sugar Bowl.....	8
2-hdd. mayonnaise Bowl.....	18

MT. VERNON

10½" X 12" 5-pt. Relish.....	\$ 40
Carmen hdd. Beer Mug.....	40

#3121 ROSEPOINT

Cordials (2).....	\$ 90
Wine (1).....	48
Iced Tea (2).....	28
Cocktail.....	30
Champagne/Sherbets (12).....	28
Low Sherbets (4).....	25
#3900/77 S&P crm. top, ftd. pr....	55
#3900 8½" Plates (5).....	17

#3011 NUDE STEMS

Brandy, amethyst w/crystal stem...\$	125
Compote, carmen w/crystal stem....	190
Compote, emer. grn. w/cry. stem...\$	170

All items mint & priced each unless noted. UPS extra.

WELCOME TO GLASS COUNTRY!

I-70

STOP AND SEE US

ROUTE 40

WE FEATURE GLASSWARE OF:
CAMBRIDGE, HEISEY, FENTON & FOSTORIA

Plus a full line of Art Pottery and a General line of Quality Antiques

Stage Coach Antique Mall

RT. 40, ONE-HALF MILE WEST OF I-70 NORWICH EXIT #184
MANY DEALERS-WIDE SELECTION-PLENTY PARKING

DORIS AND ROY ISAACS
BUY AND SELL
614-872-3720



7525 EAST PIKE
NORWICH, OHIO 43767

MON THRU SAT 10-5:30 SUN 12-5:30
SUMMER EVENING HOURS BY CHANCE

MANY DEALERS - PLENTY OF PARKING

The DAZE

★ SPECIAL OFFER
to NCC friends
\$2. off the 1 year
subscription price,
when on this form
or copy of.

The Original, National monthly newspaper dedicated to the buying, selling & collecting of colored glassware and china including Depression Glass and the Elegant Glass (Cambridge, Heisey, Fostoria etc.). We educate and inform you each month with feature articles by top notch columnists, readers "finds", club happenings, show news and a multitude of ads. Find those missing pieces to your 30s, 40s or 50s pattern. Can't identify it? Perhaps we can help. Keep up with what's happening with a subscription to the DAZE. Buy, sell or trade from the convenience of your easy chair.

Name _____ Street _____

City _____ State _____ Zip _____

1 yr. \$15.00 2 yrs. \$29.00 \$1.75 single current copy

Check enclosed MasterCard Visa

Exp. date _____ Card No. _____

Signature _____

Orders to D.G.D., Box 57NC, Otisville, MI 48463

Please allow 30 days for your first issue— Canadian subscribers, add \$1. per year and subscribe by charge card only! This Special Offer May Not Be Combined With Other Special Offers

• Old Fenton • Akro Agate • McKee •

• Cambridge • Heisey • Duncan Miller • Fostoria

Western Reserve Depression Glass Club

presents

Cleveland's 22nd Depression Era Glass, Pottery & China SHOW and SALE

GUEST: Phyllis & Bill Smith

GLASS REPAIR

GLASS IDENTIFICATION

Sat., Oct. 22, 1988
10 A.M.-5 P.M.

Sun., Oct. 23, 1988
11 A.M.-4:30 P.M.

ST. SAVA HALL

2151 W. Wallings

(Between Broadview & State Rds.)

Broadview Heights, OH

Wallings Rd. Exit I-77 — 2 Miles West

RAFFLE

Admission \$1.50

FOOD AVAILABLE

• American China • American Pottery • Depression Era Glass • New Martinsville • Padcn City

SPRINGFIELD
Antique Show & Flea Market

Clark County Fairgrounds

SPRINGFIELD, OH

Exit 59 on I-70

400-800 DEALERS

INSIDE AND OUTSIDE

Ohio's largest year round show with an emphasis on quality antiques

9:00 AM - 5:00 PM

Admission \$1.00

Children under 12 FREE

NEXT SHOW

OCTOBER 22 & 23, 1988

1988 SHOW DATES

NOV.	19-20
DEC.	10-11

BRUCE KNIGHT, MGR.

For Information Write
P.O. Box 2429, Springfield, OH 45501
Phone (513) 325-0053

COLUMBUS ANTIQUE FLEA MARKET
(ANTIQUES & COLLECTIBLES)

Ohio State Fairgrounds - Lausche Building
Off I-71 Exit 17th Avenue - Columbus, Ohio

OCTOBER 9TH

Sunday Only - 7 A.M. to 4 P.M.
Show Admission \$1.50 - Under 12 Free
150 QUALITY DEALERS

SELLING Advertising Art Deco, books, Cambridge, clocks, coins, collectibles, Depression glass, dolls, Fiesta, fine early furniture, Heisey, jewelry, lamps, oak furniture, post cards, pottery, good primitives, tools and print shop items.



4214 North High Street, Columbus, Ohio 43214
(614) 267-8163 (614) 263-6830 (614) 885-2352

NEXT SHOW: November 13, 1988

DEALERS



DIRECTORY

NOTE: When writing to the Dealers listed here, please enclose a SASE!

<p>MILBRA'S CRYSTAL MATCHING P.O. Box 363, Rio Vista, TX 76093 Milbra Long 817 / 645-6066 FOSTORIA * CAMBRIDGE * HEISEY * DEPRESSION ERA GLASSWARE BUY and SELL</p>	<p>BENICIA ANTIQUE SHOP 305 First Street Benicia, California 94510 OPEN 11 AM - 5 PM Closed Monday Z. E. LOPES 707-745-0978</p>	<p>THE MUTED SWAN ANTIQUES 5486 Peachtree Rd. Chamblee, GA 30341 Heart of Chamblee Antique Row Specializing in Cambridge, Heisey and Fostoria Bill & Pat Miller 404-451-7620</p>
<p>Mama Manning's Cherished Relics 3118 Terry Rd., Jackson, MS 39212 JENELL P. MANNING VELMA PICKLE Bus. (601)372-1713 (601)353-5316 Res. (601)372-0456</p>	<p>VISIT HISTORIC BENICIA and its 28 shops Off Interstate #80 North of San Francisco</p>	<p>Elegant American Glassware of the Early 1900s ABBA Antiques Bill & Barbara Adt (404) 279-1942 P.O. Box 2485 Lilburn, Georgia 30226</p>
<p>BOGART'S ANTIQUES Stagecoach Mall, Building #2 Norwich, OH 43767 ***** Jack and Sharon Bogart 614/826-7439 and 614/872-3514 ***** BUY - SELL - APPRAISE - REFINISH SEAT WEAVING - CLOCK REPAIR COPPER & BRASS POLISHING GENERAL LINE CAMBRIDGE GLASS</p>	<p>ANTIQUES ON THE MALL SPECIALIZING IN CAMBRIDGE GLASS Stagecoach Mall - Bldg. 3 - Norwich, OH Virginia Bennett 614/432-4483 64183 Warne Drive, Cambridge, OH 43725</p> <hr/> <p>D & D ANTIQUES Columbus, Ohio DICK SLIFKO SHOWS ONLY</p>	<p>BERKELEY ANTIQUES 69 Berkeley St., Boston, MA 02116 OPEN: Monday thru Saturday 11 AM to 5 PM GEORGE & FRANK 617/426-1048 DUNCAN, CAMBRIDGE, HEISEY, GENERAL LINE</p> <hr/> <p><i>YOU CAN ADVERTISE YOUR ANTIQUE SHOP HERE!</i></p>
<p>THE GLASS CUPBOARD 39 Shire Oaks Drive Pittsford, New York 14534 Marcia Ellis Cambridge, Duncan Miller (716) 586-7596 Shows, Mail Order, Appt.</p>	<p>JUDY'S ANTIQUES Judy Bennett 422 S. Ninth Street (Corner of Jefferson) Cambridge, Ohio 43725 BUYING Ph. 614-432-5855 SELLING <i>Cambridge Glass my Specialty</i></p>	<p>"Happiness Is" - The Stultzs 3106 Warren Court, Glen Allen, VA 23060 Shows and Mail (Richmond Area) 804/262-1273 GLASS CIRCA 1890-1960</p>
<p>"Days of Future Passed" 4 Newbrook Lane, Bayshore, L.I., NY 11706 LYNN DEZMAIN (516) 665-3890 Cambridge, Elegant Glass, D. G., Collectibles</p>	<p>GREEN ACRES FARM 2678 Hazelton Etna Rd., Pataskala, OH 43062 (State Route 310 North) Sat. & Sun. 1-7 PM 614/927-1882 Antiques, Crystal Glass and Collectibles</p>	<p>MOSTLY HEISEY & CAMBRIDGE 16 Clayton Place, Albany, NY 12209 Rhoda Curley 518 / 482-6272 SHOP and MAIL ORDER</p>
<p>THE HITCHING POST 7467 S. R. 88 Ravenna, OH 44266 Ph. 216-296-3686 D. McDaniel CAMBRIDGE — HEISEY — GENERAL LINE</p>	<p>BUY-SELL 513/390-3617 <i>Taste of Honey</i> Glassware—Collectibles CLARKE & CAROLE WEST 3433 Turner Dr. Springfield, OH 45504</p>	<p>CRYSTAL LADY 1819 Vinton St., Omaha, NE 68108 Joann D. Hagerty Lynn Welker 614/826-4418 Bus. (402)341-0643 Res. (402)391-6730 Specializing in Elegant Glass & Collectibles</p>
<p>L & M ANTIQUES 1331 S.E. 4th Ave., Pompano Beach, FL 33060 Lydia & Cliff McNeil 305/943-2274 CAMBRIDGE & FOSTORIA OUR SPECIALTY Buy & Sell Shows Only</p>	<p>REMEMBRANCES 7597 Daphne Dr., No. Syracuse, NY 13212 Shirley S. Ladouceur 315 / 458-5297 ANTIQUES and COLLECTIBLES MAIL ORDER SHOWS APPOINTMENTS</p>	<p>MARGARET LANE ANTIQUES 2 E. Main St., New Concord, OH 43762 Lynn Welker 614/826-4418 CAMBRIDGE GLASS MATCHING SERVICE Hours Mon.-Fri. 1-5 PM or by Appointment</p>
<p>GLASS RESTORATION CRYSTAL AND GLASSWARE Don & Lynne Mt. Clemens, Mich. Wormland (313) 791-9191</p>	<p>AL STEELE Westerville, Ohio 614-882-6483 or 614-882-7124 Mail Orders and Shows Only HEISEY — CAMBRIDGE — PATTERN GLASS</p>	<p>BUD'S TRADING POST GENERAL STORE — FLEA MARKET 501 Wheeling Ave. Cambridge, OH 43725 10-5 Mon. thru Sat. 614-432-4688 CAMBRIDGE - PATTERN - ART GLASS This Bud's for Y'all</p>

HAVE MORE FUN COLLECTING GLASS - JOIN A NATIONAL GLASS CLUB BECOME MORE KNOWLEDGEABLE ABOUT YOUR COLLECTIBLE GLASS

The National glass collecting clubs listed below have each been organized to serve you, the collector. Each club is dedicated to the education of the collector, and the preservation of their particular type or manufacture of glassware. Each would appreciate the opportunity to help you achieve more satisfaction from your collection.

If you are interested in membership in any of these organizations, check the list below. The appropriate club(s) will acknowledge your application with either a membership card (if remittance is enclosed) or additional information as required. MAIL TO:

NATIONAL GLASS CLUBS

P.O. Box 416
Cambridge, OH 43725

My Name is _____

Address _____

City _____ State _____ Zip Code _____

I am interested in the following club(s)

- | | |
|--|---------|
| _____ Fenton Art Glass Collectors of America, Inc. | \$15.00 |
| _____ Fostoria Glass Society of America, Inc. | \$10.00 |
| _____ Heisey Collectors of America, Inc. | \$15.00 |
| _____ National Cambridge Collectors, Inc. | \$13.00 |
| _____ National Depression Glass Association, Inc. | \$10.00 |
| _____ National Duncan Glass Society | \$10.00 |
| _____ National Imperial Glass Collectors Society | \$10.00 |
| _____ Tiffin Glass Collectors Club | \$10.00 |

Please make check
payable to the name of
the organization you
wish to join

"A man who lives right, and is right, has more power in his silence than another has by his words." PHILLIPS BROOKS

OCTOBER 1988



VISIT YOUR MUSEUM

HOURS:

**Wednesday thru Sunday - 12:00 to 4:00 P.M.
Closed Monday & Tuesday**

National Cambridge Collectors, Inc.

P. O. Box 416, Cambridge, Ohio 43725

FIRST CLASS MAIL

**FIRST-CLASS MAIL
U.S. POSTAGE
PAID**

So. Vienna, Ohio
45369
Permit No. 15

Membership Renewal Notice

This is your **last** issue of the *Crystal Ball*—if the date on your address label reads **10-88**.

Please renew now!