



# Cambridge Crystal Ball

Published monthly by the National Cambridge Collectors, Inc.  
to encourage and report the discovery of the elegant and boundless product  
of the Cambridge Glass Company of Cambridge, Ohio

Issue No. 198

October 1989

## From The President's Desk

Several years ago when I started my stemware collection, in preparation for the Stemware book, my goal was simply to acquire a goblet from each Cambridge stemware line. At first, the collection fit into a small china cabinet, but quickly spread out into a second, and then into boxes.

About a year ago I converted a closet into a display case, with glass shelves; and once again, all the stems were on display. It wasn't too long, however, when it reached capacity and newly purchased items were, once again, relegated to storage boxes in another closet. This summer I decided to alter the case by adding an extra shelf, plus put shelves at each end and install semi-permanent lighting. All this, primarily, to increase the number of stems I could display.

In order to do this, the entire collection had to be removed from the existing shelves, packed away, and the shelving removed. Later, when the new shelves were in place and the old ones returned to their positions, the collection, including those that had never been on display, were unpacked, cleaned and rearranged. And



guess what, I am already almost out of space! While I have not counted, I am guessing there are now, on the shelves, somewhere around 350 pieces. Since I am using a recessed space, dust does not

quickly accumulate, thus eliminating the need for frequent cleaning. This is good, since my idea of fun does not include washing stemware.

Many of the unusual items from my collection are on display at the N.C.C. Museum and, as space permits, more will be added. Whenever possible, and if the piece is suitable for the museum, I purchase duplicate items and in many cases donate them to the museum. At other times, stemware items are presented for acquisition by the Museum Committee.

All members are urged to be on the alert for any unusual pieces of Cambridge glassware, as well as paper goods and other memorabilia. If anyone spots an item they think should be in the museum, note the price, and contact a member of the Acquisition committee, giving an accurate identification and description of the piece, along with the asking price and dealers name. The names of committee members are printed each month, in the CRYSTAL BALL (pg. 2). Each piece, identified in this manner, will be given due consideration for museum acquisition. As monies from the fund raising drive start to increase, we will begin a more aggressive acquisition program.

Whenever I see a postcard dealer at an antique show, I always stop and check out the cards from Ohio, in hopes of finding glass company cards. My latest perusing turned up a card with an early view of the city of Cambridge itself. Unfortunately, the

continued on page 14

# Cambridge Crystal Ball

Official publication of National Cambridge Collectors, Inc., a non-profit corporation with tax exempt status. Published once a month for the benefit of its members.

Membership is available for individual members at \$15 per year and additional members (12 years of age and residing in household) at \$3 each. All members have voting rights, but only one *Crystal Ball* will be mailed per household.

Back issues of the *Crystal Ball* are available (beginning with Issue No. 1, May 1973) for members only. Cost: 60 cents each or 12 issues for \$7.

## 1989-90 Officers & Committee Chairpersons

President	Mark A. Nye
Vice-President	Cynthia A. Arent
Secretary	J.D. Hanes
Treasurer	William C. Smith
Sergeant-at-Arms	Marlene K. Snyder
Acquisition	Mark Nye, Lynn Welker, Bill Smith, Joy McFadden, J.D. Hanes
Budget & Finance	David B. Rankin
By-Laws	J.D. Hanes
Membership	Phyllis D. Smith
Museum—Facilities	Willard P. Kolb, Doyle Hanes
Museum—Interior	Lynn Welker, Janice Hughes, Marybelle Moorehead
Non-Glass Items	J.D. Hanes, Cindy Arent, Judy Momirov, Marlene Snyder
Nominating	Willard P. Kolb
Program	R. Clarke West
Project	William C. Smith
Public Relations	Bill & Phyllis Smith
Publicity	Cynthia A. Arent
Study Group Advisor	Phyllis D. Smith
1990 Auction	Lynn M. Welker
1990 Antique Show	Joy R. McFadden, Mary Beth Hackett
1990 Convention	Marybelle Moorehead
1990 Flea Market	Doyle C. Hanes
Crystal Ball Editor	Phyllis D. Smith

## Classified Advertising Rates

10 cents per word \$2.00 minimum  
We cannot mix type size in classified advertisements. Abbreviations and initials will count as words. Payment in full must accompany all ads.

## Display Advertising Rates

(Camera-ready ads preferred)	Members	Non-Members
1/8 page (9 items)	\$ 6.00	\$10.00
1/4 page (20 items)	10.00	15.00
1/2 page (20 items)	18.00	25.00
3/4 page	25.00	35.00
Full page (50 items)	33.00	45.00

## Dealers Directory

Five-line maximum \$18.00 for 12 months

Cambridge *Crystal Ball* assumes no responsibility for items advertised and will not be responsible for errors in price, description or other information.

*Advertising copy, articles, club news and notices must be in our hands by the 10th of each month to assure publication in our next issue.*

Paid advertisements containing reproductions or new glass will not knowingly be accepted for publication.

Opinions or information stated in any signed article or letter printed in the *Crystal Ball* are those of the authors and may or may not agree with National Cambridge Collectors, Inc. The Editor reserves the right to refuse and to edit any material submitted for publication so as to conform with the editorial style of the *Crystal Ball*.

## Please Address All Correspondence to:

National Cambridge Collectors, Inc.  
P.O. Box 416 Cambridge, Ohio 43725  
**President** — Mark A. Nye, 505/221-0343  
**Secretary** — J.D. Hanes, 614/432-6794  
**Editor** — Phyllis Smith, 513/323-3888

Please notify us immediately of any change in your address.

Please enclose an SASE when requesting information.

# CAMBRIDGE GLASS BOOKS FOR SALE

by National Cambridge Collectors, Inc.

\* **COLORS IN CAMBRIDGE GLASS**  
(128 pages - 60 color plates - fully indexed)  
Hardbound with Price Guide \$19.95

\* **1930-34 CAMBRIDGE GLASS CO. CATALOG REPRINT**  
(250 page reprint of original catalog)  
Hardbound with Price Guide \$14.95

\* **1956-58 CAMBRIDGE GLASS CO. CATALOG REPRINT**  
(164 page reprint of original catalog)  
Paperback \$6.95

**1985 COMBINED PRICE GUIDE**  
for 1930-34 & 1949-53 catalog reprints Postpaid \$5.75

\*NCC MEMBERS ONLY: These publications are available at 10% discount

by Bill & Phyllis Smith

**CAMBRIDGE GLASS 1927-1929**  
(66 page reprint of original catalog)  
Paperback with Identification Guide \$7.95

by Cambridge Buffs Study Group

**NEARCUT**  
(108 page reprint of 1910 Cambridge Catalog)  
Paperback with Price Guide \$9.95

by Mary, Lyle and Lynn Welker

**CAMBRIDGE GLASS CO.**  
(120 pages of reprint from 8 old catalogs)  
Paperback \$6.95

**CAMBRIDGE, OHIO GLASS IN COLOR II**  
Spiralbound \$5.95

by Harold and Judy Bennett

**1903 CAMBRIDGE GLASS CO. CATALOG REPRINT**  
(106 page reprint of an original catalog)  
Paperback \$7.50

Address your orders to:

**BOOKS**  
National Cambridge Collectors, Inc.  
P.O. Box 416  
Cambridge, OH 43725

Please add \$1.00 (P & I) per order.  
(Not required for Price Guide)

Ohio residents please add 6% state sales tax.

**DEALER DISCOUNTS AVAILABLE - PLEASE WRITE!**

## NCC Museum of Cambridge Glass

The museum is located on U.S. Route 40, one-eighth mile east of I-77 near Cambridge. Hours: 12 noon to 4 p.m., Wednesday through Sunday (March through October). Phone 614/432-4245. Closed Easter and July 4th.



# NearCut

## Fancy Portables and Oil Lamps.

This lamp is now ready for the market and your orders can be promptly filled.



2760 Electric Portable FLOWER ETCHED.

This same design Portable can be furnished with gas fittings. We have also Kerosene Oil Lamps with Center Draft Burner.

We have also several other lamps completed and ready for the trade. Let us make you up a sample package at this time.

The illustration is only one of the new ideas that we have on display at the January show in Pittsburg.

Our line of Gas and Electric Portables as well as a line of fancy Imitation Cut Glass Oil Lamps are being shown at Room 643 Fort Pitt Hotel.

---

The Cambridge Glass Co.,  
Cambridge, Ohio, U. S. A.,

Samples Now on Display at

New York Office  
25 West Broadway.

St. Louis Office  
325 Locust St.

Philadelphia Office  
116 North 12th St.

# Gas, Electric & Oil Lamps

by MARK A. NYE

One of the products of the young Cambridge Glass Co. was oil lamps. Upon examination of surviving catalog pages, it would appear most, if not all, such lamps were made using molds from other companies and at this time any given lamp would be virtually impossible to attribute to Cambridge. Other than catalog pages, little is known about these lamps.

By 1906, Cambridge was producing shades for gas and electric lamps, again using some molds that may have originated at other sites within the National Glass Co. (See pages 11 & 12 for reprints of 4 catalog pages from the 1906 catalog.) Production of these items most likely continued until the 1920s. In the later years some of the shades were of Cambridge design.

Later, and indications are it occurred in the fall of 1911 after they had become an independent company, Cambridge began manufacturing complete gas and electric lamps, using items or modified items from the Nearcut lines. Based on catalogs and trade journal information, it would appear this aspect of Cambridge production had ceased by the early 1920s. The information concerning Cambridge gas and electric lamps that is available comes from several sources, including the 1906, 1915-17, and #10 (1920-22) catalogs and trade journals. Information culled from two such journals, China, Glass & Lamps and Crockery & Glass Journal, and reprinted catalog pages, constitute the balance of this article.

The earliest trade journal reference found for Cambridge glass and electric lamps or portables, as they were called at the time, dates to October 1911 and comes from the October 12, 1911 issue of Crockery & Glass Journal.

"Electroliers in pressed glass are the very latest. The Cambridge Glass Co. has sent to its New York representative, William Dealing, two very attractive ones in the 'Near Cut' brand of glass. They are not, of course, nearly so costly as cut glass, and look mighty good."

The earliest advertisements found date to December 1911 and appeared in China, Glass & Lamps and Crockery & Glass Journal. The one appearing in the former journal is reprinted

ed on page 13 of this issue. Shown are two portables, the #2760 described as "Flower Etched," and the #31 described as "Rich Imitation of Cut Glass." The #2760 pattern is also known as "Daisy," while the #31 is actually from the #2631 or "Marjorie" line.

The following is taken from the January 4, 1912 issue of Crockery & Glass Journal.

"The crystal lamps being shown by William Dealing from the Cambridge Glass Co. are proving good sellers, re-orders being received in satisfactory quantities. It is hard to distinguish, unless closely examined, the 'Nearcut' lamps from the genuine cut glass articles. The shapes are artistic and elegant, and they may be had for electricity, gas, or oil."

The following dates a week later and deals with the Cambridge display at the 1912 Pittsburgh Glass Exhibition at the Fort Pitt Hotel.

"Cambridge Glass Co. - W.C. McCartney and Arthur J. Bennett in charge. Three new table lines are being shown this year. A feature of the display is the new pressed glass portable in six different patterns and designs."

For three consecutive weeks in January 1912, China, Glass & Lamps carried a full Cambridge advertisement for "NearCut Fancy Portables and Oil Lamps" that featured an illustration of the #2760 Electric Portable. It is reprinted on page 3 of this issue and features the #2760 or "Daisy" lamp.

The March 18, 1912 issue of China, Glass & Lamps had this to say about Cambridge:

"President Bennett, of the Cambridge Glass Co. was in Pittsburgh during last week looking after business matters. The Cambridge Company is doing an excellent business particularly in the glass portables and electrics shown to the trade for the first time during the glass and pottery show here in January. They are of attractive design, and so useful that buyers have picked them as among the 'best sellers,' and the judgement of the buyer in this instance is being gloriously vindicated if the orders reaching the Cambridge Company count as proof."

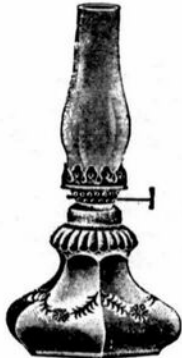
Gas and electric portables continued to be

continued on page 14



# Night Lamps and Hand Lamps.

SCALE, HALF SIZE



Duchess Night Lamp.  
Packed 12 dozen in a barrel.



Countess Night Lamp.  
Packed 12 dozen in a barrel.



Princess Night Lamp.  
Packed 4½ dozen in a barrel.  
Packed 3¼ dozen in a barrel.  
One in a box.



No. 2576 O Hand Lamp, 1 Col.  
Packed 8 dozen in a barrel.



No. 2575 O Hand Lamp, 1 Col.  
Packed 8 dozen in a barrel.



No. 2576 A Footed Hand Lamp, 1 Col.  
Packed 4½ dozen in a barrel.



No. 2576 C Footed Hand Lamp, B Col.  
Packed 3¼ dozen in a barrel.



No. 2575 O Footed Hand Lamp, 1 Col.  
Packed 5¼ dozen

# No. 2576 Line Lamps.

PLASTER OR CLINCHED-ON COLLAR.

SCALE, HALF SIZE.



O Stand Lamp, No. 1 Collar.  
Packed 4½ dozen in a barrel.



A Stand Lamp, No. 1 Collar.  
Packed 3¼ dozen in a barrel.



B Stand Lamp, No. 2 Collar.  
Packed 2½ dozen in a barrel.



C Stand Lamp, No. 2 Collar.  
Packed 2 dozen in a barrel.



No. 2676 E Sewing Lamp.  
Also made in Size D.  
E, Packed 1½ dozen in a barrel.  
D, Packed 2 dozen in a barrel.



D Stand Lamp, No. 2 Collar.  
Packed 1½ dozen in a barrel.



2660 Portable. Gas or Electric.  
Nickel Plated Metal Parts.  
Diameter Shade, 10 in. Total Height, 19 in.



2631 Portable. Gas or Electric.  
Silver Plated Metal Parts.  
Diameter Shade, 12 in. Total Height, 20 in.



2760 Portable. Gas or Electric.  
Silver Plated Metal Parts, White Etched Flower.  
Diameter Shade, 12 in. Total Height, 22 in.



2792 Portable. Electric Only.  
Nickel Plated Metal Parts.  
Diameter Shade, 10 in. Total Height, 21 in.



2801 Portable. Electric Only.  
Height to Top of Shade, 12½ in.  
Diameter Base of Shade, 6¼ in.  
Patent all Glass Shade Holder.



2351 Portable. Gas or Electric.  
Nickel Plated Metal Parts.  
Diameter Shade, 10 in. Total Height, 19½ in.



2340. Oil Lamp.  
Crystal Imitation Cut Glass, Nickel Plated Metal  
Parts, with D Wick Burner.  
Diameter Shade, 10 in. Total Height, 17 in.



2760. Oil Lamp.  
White Etched Flower, Silver Plated Metal Parts,  
with Royal Center Draft Burner.  
Diameter Shade, 12 in. Total Height, 18½ in.



2660. Oil Lamp.  
Crystal Imitation Cut Glass, Nickel Plated Metal  
Parts, with Single D Wick Burner.  
Diameter Shade, 10 in. Total Height, 18 in.



2575 C Sewing Lamp.  
No. 2 Collar.



269 D Stand.  
No. 2 Collar.



497 B Stand.  
No. 2 Collar.



448 C Stand.  
No. 2 Collar.



360 F Stand.  
No. 2 Collar.



2575 O Footed Hand Lamp.  
No. 1 Collar.



269 A Footed Hand Lamp.  
No. 1 Collar.



497 O Flat Hand Lamp.  
No. 1 Collar.



448 O Footed Hand Lamp.  
No. 1 Collar.



360 O Footed Hand Lamp.  
No. 1 Collar.



2575 A Footed Hand Lamp.  
Made with A or B Collars.

No. 369 LAMP LINE  
Riverside Clinched on Collar

O Footed Hand Lamp, Height, 4 1/4 in.	7 1/2
OO Stand Lamp,	7 1/2
O " " " "	7 1/2
A " " " "	8 1/2
B " " " "	8 1/2
C " " " "	9 1/2
D " " " "	10
F Sewing " " "	10 1/2
D " " " "	8 1/2

No. 497 LAMP LINE  
Riverside Clinched on Collar

O Flat Hand Lamp, Height, 2 1/4 in.	4 1/2
A " " " "	4 1/2
OO Stand " " "	7 1/2
O " " " "	7 1/2
A " " " "	8 1/2
B " " " "	8 1/2
C " " " "	9 1/2
D " " " "	10 1/2
C Sewing " " "	7 1/2

No. 360 LAMP LINE  
Riverside Clinched on Collar

O Footed Hand Lamp, Height, 4 1/4 in.	7 1/2
OO Stand Lamp,	7 1/2
O " " " "	7 1/2
A " " " "	8
B " " " "	8 1/2
C " " " "	8 1/2
D " " " "	9
F Sewing " " "	9 1/2
C Sewing " " "	7 1/2



2575 O Hand Lamp.  
No. 1 Collar.



2574 C Sewing Lamp.  
No. 2 Collar.



516 D Sewing Lamp.  
No. 2 Collar.



448 OO Stand Lamp.  
No. 1 Collar.

No. 448 LAMP LINE  
Riverside Clinched on Collar

O Flat Hand Lamp, Height, 2 1/4 in.	4 1/2
O Ftd. Hand Lamp,	7
OO Stand Lamp,	7 1/2
O " " " "	7 1/2
A " " " "	8 1/2
B " " " "	8 1/2
C " " " "	9
D " " " "	9 1/2
C Sewing " " "	7 1/2



2581 C Stand Lamp.



2575 OO Stand, No. 1 Collar.  
No. 2575 LAMP LINE  
Plaster Collar. Cambridge Shrunk  
on Collar. Riverside Clinched on  
Collar.

O Flat Hand Lamp, Height, 3 in.	4 1/2
O Ftd. " " "	4 1/2
A " " " "	4 1/2
B " " " "	4 1/2
C " " " "	5 1/2
OO Stand Lamp,	7 1/2
O " " " "	7 1/2
A " " " "	8 1/2
B " " " "	8 1/2
C " " " "	9 1/2
D " " " "	10
C Sewing " " "	8 1/2
D " " " "	8 1/2
E " " " "	9



2574 O Footed Hand Lamp.  
No. 1 Collar.



516 O Footed Hand Lamp.  
No. 1 Collar.

No. 2574 LAMP LINE  
Plaster Collar. Cambridge Shrunk on  
Collar. Riverside Clinched on  
Collar.

O Flat Hand Lamp, Height, 3 in.	5
O Ftd. " " "	5
OO Stand Lamp,	7 1/2
O " " " "	7 1/2
A " " " "	8
B " " " "	8 1/2
C " " " "	9 1/2
D " " " "	10
C Sewing " " "	8 1/2
D " " " "	8 1/2
F " " " "	8 1/2

No. 516 LAMP LINE  
Riverside Clinched on Collar.

O Ftd. Hand Lamp, Height, 3 in.	7 1/2
OO Stand Lamp,	7 1/2
O " " " "	7 1/2
A " " " "	8 1/2
B " " " "	8 1/2
C " " " "	9 1/2
D " " " "	10 1/2
C Sewing " " "	8 1/2

PATENT COLLAR.  
Clean Safe Durable  
Perfection in Lamp Construction.



2581 Footed Hand Lamp.  
No. 2581 LAMP LINE  
Riverside Clinched Collar.

O Flat Hand Lamp, Height, 3 1/4 in.	5 1/2
O Ftd. " " "	5 1/2
OO Stand Lamp,	7 1/2
O " " " "	7 1/2
A " " " "	8 1/2
B " " " "	8 1/2
C " " " "	9 1/2
D " " " "	10
C Sewing " " "	8

This is a full Double Collar with  
lock groove in the top or outer  
edge, and in the inner edge spun  
to the inside of the bowl, making  
the collar perfectly tight.  
Can not come loose or leak.  
This is the same style collar as  
used in the past by  
THE RIVERSIDE GLASS CO.



SEWING LAMPS, FOUNTS, NIGHT LAMPS AND GAS AND ELECTRIC SHADES, SPUN AND PLASTER COLLARS. TRADE MARK "Nearcut" 46



2567C. Sewing. No. 2 Collar. Height to Top of Collar, 8½ in.



2566C. Sewing. No. 2 Collar. Height to Top of Collar, 8½ in.



2578C. Sewing. No. 2 Collar. Height to Top of Collar, 8½ in.



2571C. Sewing. No. 2 Collar. Height to Top of Collar, 8½ in.



2570C. Sewing. No. 2 Collar. Height to Top of Collar, 8½ in.



2579C. Sewing. No. 2 Collar. Height to Top of Collar, 8 in.



2569C. Sewing. No. 2 Collar. Height to Top of Collar, 8½ in.



2580C. Sewing. No. 2 Collar. Height to Top of Collar, 8½ in.



2572C. Sewing. No. 2 Collar. Height to Top of Collar, 8½ in.



Duchess Night Lamp. Plaster Collar.



Countess Night Lamp. Plaster Collar.



2624. Fount, Plaster Collar. Can also be furnished in Shrunken on Collar.



2626. Feeder Fount. Riverside Clinched on No. 2 Collar. Can also be furnished in Plaster Collar.



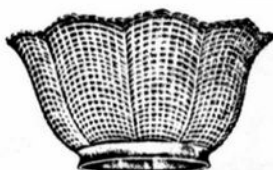
2625. Feeder Fount. Plaster Collar. Can also be furnished in Shrunken on Collar.



2623. Feeder Fount. Plaster Collar. Can also be furnished in Shrunken on Collar.



2622. Kitchen Fount. Plaster Collar.



811. C Shape or Flared Gas Shade. Diameter, 7¼ in.



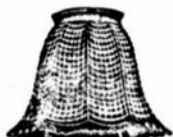
2634. Flared or C Shape Gas Shade. Diameter, 7¼ in.



819. C Shape or Flared Prism Gas Shade. Diameter, 7¼ in.



2663. B Shape or Crimped Gas Shade. Diameter, 7¼ in.



711. C Shape or Flared Electric Shade. Diameter, 5 in.



2634. C Shape or Flared Electric Shade. Diameter, 4½ in.



719. C Shape or Flared Prism Electric Shade. Diameter, 5 in.



2663. B Shape or Crimped Electric Shade. Diameter, 4½ in.



Inverted Gas Shade. Made in 5-6-7 in. Size. Fitter 3½ in. so as to fit Standard Electric or Gas Fitter.



2662. B Shape or Crimped Gas Shade. Diameter, 7¼ in.



2662. B Shape or Crimped Electric Shade. Diameter, 4½ in.



2664. B Shape or Crimped Gas Shade. Diameter, 7¼ in.



2664. B Shape or Crimped Electric Shade. Diameter, 4½ in.



No. 2575. A Stand  
No. 1 Collar



No. 2575. A Stand  
No. 2 Collar



No. 2575. B Stand  
No. 2 Collar



No. 2575. C Stand  
No. 2 Collar



No. 2575. D Stand  
No. 2 Collar



No. 2575. C Sewing  
No. 2 Collar



No. 2575. O Flat, Hand  
No. 1 Collar



No. 2575. O Footed  
Hand  
No. 1 Collar



No. 2575. B Footed  
Hand, No. 2 Collar



No. 2575. C Footed  
Hand  
No. 2 Collar



No. 2575. O O Stand  
No. 1 Collar



No. 2575. O Stand  
No. 1 Collar



No. 2581. D Stand  
No. 2 Collar



No. 2580. A Stand  
No. 2 Collar



No. 516. C Sewing  
No. 2 Collar



No. 2574. C Sewing  
No. 2 Collar



No. 2566. C Sewing  
No. 2 Collar



No. 497. C Stand  
No. 2 Collar



No. 269. C Sewing  
No. 2 Collar



No. 2626. Fount  
No. 2 Collar



No. 2625. Fount  
No. 2 Collar



No. 2622. Fount  
No. 2 Collar



No. 2623. Hid. Fount  
No. 2 Collar



No. 2572  
C Sewing Lamp  
No. 2 Collar

PATENT COLLAR  
Clean Safe Durable  
Perfection in Lamp Construction

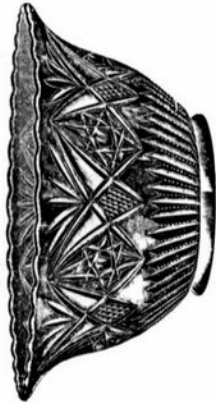


This is a full Double Collar with lock groove in the top or outer edge, and in the inner edge spun to the inside of the bowl, making the collar perfectly tight. Can not come loose or leak.

# No. 2626 Gas and Electric Shades.

187

SCALE, HALF SIZE.



Gas Shade, C Shape.  
Packed 4½ dozen in a barrel.



Gas Shade, B Shape.  
Packed 4½ dozen in a barrel.



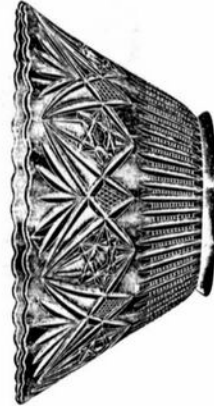
Electric Shade, B Shape.  
Packed 11 dozen in a barrel.



Electric Shade, C Shape.  
Packed 11 dozen in a barrel.



Gas Shade, A Shape.  
Packed 4 dozen in a barrel.



Gas Shade, D Shape.  
Packed 4 dozen in a barrel.

188

# Gas and Electric Shades.

SCALE, HALF SIZE.



Gas Shade, B Shape.  
Packed 4½ dozen in a barrel.



Gas Shade, C Shape.  
Packed 4½ dozen in a barrel.



Electric Shade, A Shape.  
Packed 11 dozen in a barrel.



Electric Shade, B Shape.  
Packed 11 dozen in a barrel.



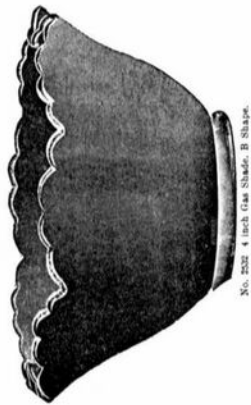
Gas Shade, D Shape.  
Packed 4½ dozen in a barrel.



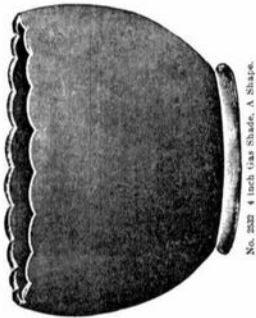
Gas Shade, A Shape.  
Packed 4 dozen in a barrel.

190 No. 2532 Gas and Electric Shades.

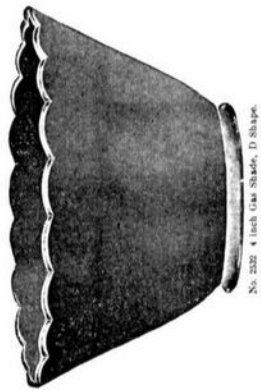
PLAIN—LIGHT PRESSED.



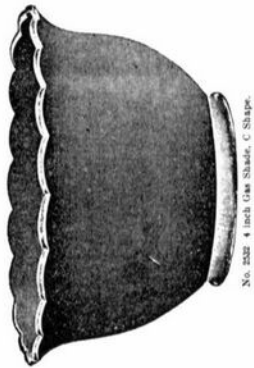
No. 2532 4 inch Gas Shade, B Shape.



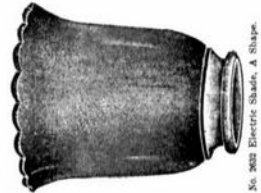
No. 2532 4 inch Gas Shade, A Shape.



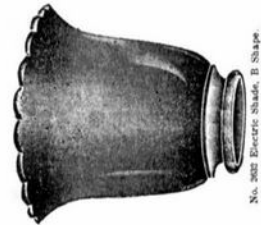
No. 2532 4 inch Gas Shade, D Shape.



No. 2532 4 inch Gas Shade, C Shape.



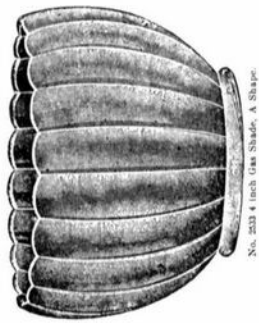
No. 2532 Electric Shade, A Shape.



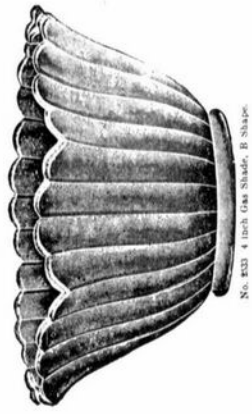
No. 2532 Electric Shade, B Shape.

191 No. 2533 Gas and Electric Shades.

OPTIC FLUTE, LIGHT PRESSED.



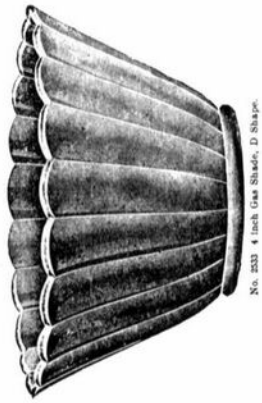
No. 2533 4 inch Gas Shade, A Shape.



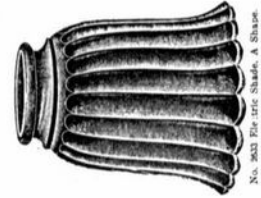
No. 2533 4 inch Gas Shade, B Shape.



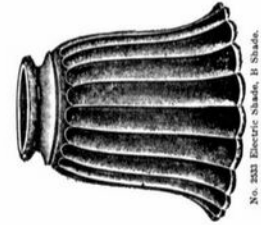
No. 2533 4 inch Gas Shade, C Shape.



No. 2533 4 inch Gas Shade, D Shape.



No. 2533 Electric Shade, A Shape.



No. 2533 Electric Shade, B Shape.



# NearCut

## Fancy Portables and Oil Lamps

These lamps are now ready for the market and your orders can be promptly filled.



2760 Oil Lamp.  
ETCHED FLOWER.

We have also several other lamps completed and ready for the trade. Let us make you up a sample package at this time.



2760 Electric Portable.  
FLOWER ETCHED.

Both portables can be furnished in Gas as well as the Electric.

*Ask for Prices  
and Large Size  
Illustrations*



No. 31 Electric Portable.  
Rich Imitation of Cut Glass.

The above are only a few of the new ideas that we will have on display at the January show in Pittsburg.

Our line of Gas and Electric Portables as well as a line of fancy Imitation Cut Glass Oil Lamps will all be completed by January 1.

# The Cambridge Glass Co.,

Cambridge, Ohio, U. S. A.

Samples Now on Display at

New York Office  
25 West Broadway.

St. Louis Office  
325 Locust St.

Philadelphia Office  
116 North 12th St.

mentioned in the trade journals during the following years. From a January 11, 1915 article covering that year's Pittsburgh show comes this:

"Gas and electric portables, which are in good demand, add greatly to the display by giving an excellent lighting effect, the arrangement of ware being in good taste and very attractive."

After this date, lamps received only an occasional mention. This is not surprising since in most cases it was new items and lines that received notice by the trade journals and were the subjects of paid advertisements.

As mentioned in the opening paragraph, a full page of "Portables, Gas - Electric - Oil" appeared in a Cambridge catalog issued circa 1915-17 along with another page devoted to shades for gas and electric lamps and oil lamp bases. This indicates the portables continued to be available as the 1920s approached. On this page are illustrated the previously mentioned "Daisy" and "Marjorie" lamps, as well as, one of the #2660 or "Wheat Sheaf" pattern and three others; #2792, #2801 and #2351. As evidenced by the catalog captions, these with the exception of the #2801 were not small lamps. The #2760 has a total height of 22" while the #2801 only reaches to 12½".

(Pages 5 & 6 of this issue contain reprinted pages from the 1906 Cambridge catalog; and pages 7, 8 & 9 contain pages reprinted from the Cambridge catalog circa 1915-17.)

The catalog known as Catalog #10 and issued circa 1920-22 contains illustrations of lamps in several styles. (See page 10 in this issue for a reprint of the page from Catalog #10.)

One can only assume, based on the available information, that Cambridge discontinued lamp production sometime early in the 1920s.

Complete lamps or even parts seldom appear today and when they do, command the attention of all serious Cambridge collectors (especially those specializing in Nearcut), and early lamp collectors.

---

Be Sure To Attend The  
N.C.C. QUARTERLY MEETING and DINNER  
November 4, 1989  
Reservations Deadline - October 31st

sender did not supply a year, simply month and day, and the year portion of the postmark did not print. Perhaps at a later date, it can be dated. In the meantime, as space permits, and if it is possible, the card will be reprinted in the CRYSTAL BALL. (See page 20.)

The Museum was connected to the county water system in mid August, as planned, with much of the work being done by members Larry Hughes and Willard Kolb. They deserve a big THANK YOU!

Information regarding the November Quarterly Meeting was printed in the September C.B. and there is a reservation form included in this issue as well. I urge each and every one, who can, to attend and hear Bernard Boyd speak. We also hope to be able to present the first of the Fund Drive Appreciation Awards at the November meeting. If you have already given the full \$104, please be sure to attend.

The museum closes for the winter at the end of this month (October). If you have put off that trip to Cambridge, there is still time to make it, and see the Museum. The Museum will reopen for the 1990 season the first weekend of March.

Do note the list of educational programs, available for rent, printed on page 16. These make a suitable program for Study Groups, as well as any organization interested in Cambridge glass. In addition, the rental fees do provide income for the club. Additional programs await preparation of new narratives and it is anticipated the coming year will see new programs produced.

Until next time -

Collect Cambridge!



---

**Thought  
For the Day**

Nothing is quieter  
than the sound of hair  
turning grey!

---

PLEASE - SUPPORT OUR ADVERTISERS!

**CAMBRIDGE FOR SALE**

MELODY - Goblets, Low Sherbets,  
& Cordials - 6 of each  
Low Cocktails - 5 of each  
All for - \$130.00

ROSEPOINT - #3400/67 Relish - \$50.00

MARJORIE - 8 oz. Tumblers - 8 of each  
Set - \$96.00

#627 CANDLESTICKS - Gold Krystal  
Pair - \$30.00

PHONE OR WRITE

**Lynne Wormland**

36777 Mapleridge  
Mt. Clemens, MI 48043

Phone: 313/791/9191

**Crystal Ball  
Binders**



Top quality, clear vinyl covered,  
1½", 3 ring, loose leaf binders

Order Now For Immediate Delivery

\$6 each plus \$1 each for P&H  
(Ohio residents add 36¢ each sales tax)

N.C.C., Inc., P.O. Box 416,  
Cambridge, OH 43725

*Announcing*



**Old  
Morgantown  
Glass  
Collectors' Guild**

**\$20.00  
CHARTER  
MEMBERSHIP**

*includes*

Please register me as a Charter Member of the OLD MORGANTOWN  
GLASS COLLECTORS' GUILD. My \$20.00 Membership Fee is enclosed.

\_\_\_\_\_  
Name (please print)

\_\_\_\_\_  
Street Address (U.P.S.) P.O. Box (if applicable)

\_\_\_\_\_  
City State Zip A.C. & Phone #

THE FOLLOWING MEMBERS OF MY HOUSEHOLD REQUEST ASSOCIATE MEMBERSHIP AND  
PRIVILEGES FOR AN ANNUAL FEE OF \$2.50 each:

\_\_\_\_\_  
\_\_\_\_\_  
\_\_\_\_\_

TOTAL # Memberships: \_\_\_\_\_ AMOUNT ENCLOSED: \$ \_\_\_\_\_  
(Check or Money Order)

MAIL TO: OLD MORGANTOWN GLASS COLLECTORS' GUILD  
P.O. Box 894 - Dept. C N Morgantown WV 26507-0894

- One limited edition clear glass paperweight cast from an original 1930s Morgantown mold.
- One year's membership in the Old Morgantown Glass Collectors' Guild. Annual dues will be \$15.00 after first year.
- A quarterly Newsletter to member households. Each issue will contain previously unpublished material re The Economy Tumbler Company, The Old Morgantown Glass Works, and The Morgantown Glassware Guild.
- Other benefits to be listed in a letter of acknowledgement forwarded to each charter member upon receipt of the information listed below.

FOR RENT

N.C.C. EDUCATIONAL PROGRAMS

The National Cambridge Collectors, Inc., have several educational programs available for rent. These programs are in one of two formats: 35mm slides or 8½" x 11" transparencies (for use with an overhead projector). All come with a written narrative and all, except the Caprice program, have a cassette recording of the narrative available.

The programs, currently available, are as follows:

<u>TOPIC</u>	<u>FORMAT</u>
Cambridge Etchings	Slides
Cambridge Colors	Slides
Cambridge Stemware	Slides
Caprice	Slides
Cambridge History 1901-1954	Transparencies
Cambridge - The Reopen Years	Transparencies
Cambridge Arms	Transparencies
Cambridge in the 1940s	Transparencies
Cambridge Engravings	Transparencies

Each of these is suitable for use as a program at any type of glass club meeting where a program of Cambridge glass is desired. The average length of these programs, when using the prerecorded narrative, is approximately 30 minutes.

The fee for these programs is: \$15 ea.

\$25 Deposit REQUIRED for each.  
(\$10 will be refunded when program is returned to N.C.C.)

Inquiries regarding the rental of these programs should be addressed to:

Program Rentals  
National Cambridge Collectors, Inc.  
P. O. Box 416  
Cambridge, OH 43725

— Classified —

FOR SALE: Willow blue #867 cream & sugar, etched Peacock & Urn, set \$35. Caprice light green #647 candleholders, pair \$85. Rosepoint #3400/165 candy and cover \$85; #3500/108 2½" candleholder \$25. Wildflower etched #3400/4, 12" bowl \$35. UPS Extra. Robert Taylor, 80 Middle St., Apt. 21, Gloucester, MA 01930. Phone: 508/281-4637.

FOR SALE: #3122 Diane etched: 7-1/4" goblets (11); 5" juices (12); sherbets (8); 6-1/4" underplates (5). Make offer. Barbara Jennings, 134 Garden Parkway, Henrietta, NY 14467. Phone: 716/334-5066.

WANTED: Etched Nude Stems. Cambridge Apple - all colors. Crystal #1091 sauce boat liner. Dana Stephens, 6224 Old Collinsville Rd., Fairview Hgts., IL 62208.

WANTED: E718 Hunt Scene, crystal: stems; plates; tumblers. Lois Critchfield, P.O. Box 103, Delaplane, VA 22025.

NEW Price Guide to  
The N.C.C. COLOR BOOK

\$2.00 EACH

National Cambridge Collectors, Inc.,  
P.O. Box 416, Cambridge, OH 43725

**NOTICE**  
**DUES INCREASE**

Effective OCTOBER 1, 1989  
New Members and Renewals

MASTER MEMBER - \$15.00 per year  
ASSOCIATES - Remain at \$3.00 per year  
(12 years and residing in same household)

**All members have voting rights.**  
**Only one Crystal Ball per household.**



## *Announcing* **Cambridge Rose Point**

*A new book from the National Cambridge Collectors*

*Compiled & edited by Mark A. Nye*

- 96 pages,
- Lists all known items in this etched pattern.
- Informative articles.
- Reprints of original catalogs.
- Price guide included.
- \$12.95 (Plus \$1.00 Shipping & handling, \$.77 tax for Ohio residents.)



**Rose Point Book, N.C.C. Inc.**  
**P.O. Box 416, Cambridge, OH 43725**

## **NOTICE! COLLECTORS AND DEALERS**

Now you can attract hundreds of new buying and selling prospects. List your name, address and interested buying (or selling) categories in the **1990 Who's Who In Collectibles and Antiques Directory**. This prestigious guide is sold nationwide by mail to over 5,000 qualified people every month! For your annual listing, by category, simply send a one time fee of only \$25.00 (up to five different categories) to: Collectors Network, Pub. Dept., 516 Fifth Ave., Suite 507, NY, NY 10036. (Receive two free copies per listing. Order add'l copies at \$12.95 each.)

## **COLUMBUS ANTIQUE FLEA MARKET (ANTIQUES & COLLECTIBLES)**

Ohio State Fairgrounds - Lausche Building  
Off I-71 Exit 17th Avenue - Columbus, Ohio

# OCTOBER 8

Sunday Only - 7 A M to 4 P M  
Show Admission \$1.50 - Under 12 Free  
150 QUALITY DEALERS

SELLING Advertising Art Deco, books, Cambridge, clocks, coins, collectibles, Depression glass, dolls, Fiesta, fine early furniture, Heisey, jewelry, lamps, oak furniture, post cards, pottery, good primitives, tools and print shop items



4214 North High Street, Columbus, Ohio 43214  
(614) 267-8163 (614) 263-6830 (614) 885-2352

**NEXT SHOW: November 12, 1989**

**THESE COLLECTIONS ARE FOR SALE**

- |                   |                    |                     |
|-------------------|--------------------|---------------------|
| SPOONS            | CAMERAS            | SOUP LADLES         |
| RELIGIOUS MEDALS  | CRUCIFIXES         | ANTIQUÉ JEWELRY     |
| POST CARDS        | SALT & PEPPERS     | KEYS . . . . . TOYS |
| LADIES COMPACTS   | VICTORIAN CRYSTAL  | BELLS               |
| CIGARETTE CASES   | AUTO MEMORABILIA   | THIMBLES            |
| ICE PICKS         | ANTIQUÉ TOOLS      | EYE CUPS            |
| WRIST WATCHES     | RULERS             | VICTORIAN SILVER    |
| COINS             | DEPRESSION GLASS   | TRAINS              |
| SAFETY RAZORS     | BADGES             | LETTER OPENERS      |
| STILL BANKS       | SHAVING MUGS       | MILITARY RELICS     |
| SHOE HORNS        | FOUNTAIN PENS      | AVON ITEMS          |
| MILITARY MEDALS   | PEN KNIVES         | FIRST DAY COVERS    |
| PAPER MEMORABILIA | MECHANICAL PENCILS | POCKET WATCHES      |

**CHARLES MIKULIK BOX 416 ELIZ., NJ**

**COLLECTORS & DEALERS  
WE OFFER A FINE SELECTION**



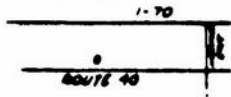
**OF  
CAMBRIDGE GLASSWARE  
AT COMPETITIVE PRICES**

SUBSTANTIAL ROSEPOINT (PRESSED & ETCHED),  
CAPRICE: COLORED, CLEAR, & ALPINE, NUDE STEMS,  
CHANTILLY, WILDFLOWER & IMPERIAL HUNT ETCH  
FIGURAL FLOWER FROGS, ANIMALS, CANDLESTICKS  
MT. VERNON, EVERGLADES, GEORGIAN, CROWNTUSCAN,  
SIMILAR SELECTIONS IN HEISEY, DUNCAN, FOSTORIA  
NEW MARTINSVILLE, FENTON & OTHER ELEGANTS  
CALL OR WRITE. WE'D LIKE TO KNOW YOUR "WANTS"

**CLASSIQUE GLASS CO.**

BOX 52572 • TULSA, OKLAHOMA 74152 • (918) 744-5409

WELCOME TO GLASS COUNTRY!



STOP AND SEE US

WE FEATURE GLASSWARE OF:  
CAMBRIDGE, HEISEY, FENTON, & FOSTORIA  
Plus Art Pottery & a General line of Antiques

*Stage Coach  
Antique Mall*

RT. 40 ONE-HALF MILE WEST OF I-70 EXIT #164  
MANY DEALERS - WIDE SELECTION - PLENTY PARKING

**DORIS AND ROY ISAACS  
BUY AND SELL  
614-872-3720**



**7525 EAST PIKE  
NORWICH, OHIO 43767**

MON THRU SAT 10-5:30 SUN 12-5:30  
SUMMER EVENING HOURS BY CHANCE

**SPRINGFIELD  
Antique Show &  
Flea Market**

Clark County Fairgrounds

**SPRINGFIELD, OH**

Exit 59 on I-70  
400-800 DEALERS  
INSIDE AND OUTSIDE  
Ohio's largest year round show with an  
emphasis on quality antiques  
9:00 AM - 5:00 PM  
Admission \$1.00  
Children under 12 FREE

NEXT SHOW

**OCTOBER 21 & 22, 1989**

1989 SHOW DATES		
NOV.	18-19	Inside
DEC.	9-10	Inside

**BRUCE KNIGHT, MGR.**

For Information Write  
P O Box 2429, Springfield, OH 45501  
Phone (513) 325-0053

**The DAZE**

**\*SPECIAL OFFER**  
to NCC friends \$2. off  
the 1 year subscription  
price when on this form  
or copy of.

The Original National monthly newspaper dedi-  
cated to the buying, selling & collecting of colored  
glassware and china including Depression Glass  
and the Elegant Glass (Cambridge, Heisey, Fostoria,  
etc.) We educate and inform you each month  
with feature articles by top notch columnists,  
readers "finds", club happenings, show news and a  
multitude of ads. Find those missing pieces to your  
30s, 40s or 50s pattern. Can't identify it? Perhaps  
we can help "Keep up with what's happening with  
a subscription to the DAZE. Buy, sell or trade from  
the convenience of your easy chair.

Name \_\_\_\_\_ Street \_\_\_\_\_  
City \_\_\_\_\_ State \_\_\_\_\_ Zip \_\_\_\_\_  
1 yr \$17    2 yrs \$33    \$2. Single Current Copy  
Exp date \_\_\_\_\_ Card No. \_\_\_\_\_  
Signature \_\_\_\_\_

**Orders to D.G.D., Box 57NC, Otisville, MI 48463**  
Please allow 30 days for your first issue - Canadian subscribers, add \$1.  
per year and subscribe by charge card only! This Special Offer may not be  
combined with any other special offer.

# DEALERS



# DIRECTORY

NOTE: When writing to the Dealers listed here, please enclose a SASE!

<p><b>MILBRA'S CRYSTAL MATCHING</b> P.O. Box 363, Rio Vista, TX 76093 <b>Milbra Long</b> 817 / 645-6066 FOSTORIA * CAMBRIDGE * HEISEY * DEPRESSION ERA GLASSWARE <b>BUY and SELL</b></p>	<p><b>BENICIA ANTIQUE SHOP</b> 305 First Street Benicia, California 94510 <b>OPEN 11 AM - 5 PM</b> Closed Monday Z. E. LOPES 707-745-0978</p>	<p><b>THE MUTED SWAN ANTIQUES</b> 5486 Peachtree Rd. Chamblee, GA 30341 Heart of Chamblee Antique Row Specializing in Cambridge, Heisey and Fostoria Bill &amp; Pat Miller 404-451-7620</p>
<p><i>YOU CAN ADVERTISE YOUR ANTIQUE SHOP HERE!</i></p>	<p><b>VISIT HISTORIC BENICIA</b> and its 28 shops Off Interstate #80 ..... ..... North of San Francisco</p>	<p>Elegant Depression Era Glassware <b>ABBA ANTIQUES</b> 1157 Charlie Lane Lilburn, GA 30247 Bill &amp; Barbara Adt (404) 279-1942 Shows, Mail Order, &amp; by Appointment</p>
<p><b>THE GLASS URN</b> 456 West Main Street, Suite G. Mesa, AZ 85201 602 / 833-2702 Mail Order Shows Open Shop <b>CAMBRIDGE, FOSTORIA, HEISEY, ETC.</b></p>	<p><b>ANTIQUES ON THE MALL</b> SPECIALIZING IN CAMBRIDGE GLASS Stagecoach Mall - Bldg. 3 - Norwich, OH Virginia Bennett 614/432-4483 64183 Warne Drive, Cambridge, OH 43725</p>	<p><b>BERKELEY ANTIQUES</b> 69 Berkeley St., Boston, MA 02116 OPEN: Monday thru Saturday 11 AM to 5 PM GEORGE &amp; FRANK 617/426-1048 DUNCAN, CAMBRIDGE, HEISEY, GENERAL LINE</p>
<p><b>ETTELMAN'S DISCONTINUED CHINA &amp; CRYSTAL</b> Cambridge a Specialty P.O.Box 6491-CB Corpus Christi, TX 78466 Phone (512) 888-8391 Include S,A,S,E.</p>	<p><b>D &amp; D ANTIQUES</b> Columbus, Ohio DICK SLIFKO SHOWS ONLY</p>	<p><i>YOU CAN ADVERTISE YOUR ANTIQUE SHOP HERE!</i></p>
<p><b>THE GLASS CUPBOARD</b> 39 Shire Oaks Drive Pittsford, New York 14534 Marcia Ellis Cambridge, Duncan Miller (716) 586-7596 Shows, Mail Order, Appt.</p>	<p><b>JUDY'S ANTIQUES</b> Judy Bennett 422 S. Ninth Street (Corner of Jefferson) Cambridge, Ohio 43725 BUYING Ph. 614-432-5855 SELLING Cambridge Glass my Specialty</p>	<p>"HAPPINESS IS" The Stultzs 3106 Warren Court Glen Allen, VA 23060 SHOWS &amp; MAIL 804-672-8102 (RICHMOND AREA) AMERICAN MADE GLASS CIRCA 1890-1960.</p>
<p><b>"Days of Future Passed"</b> 4 Newbrook Lane, Bayshore, L.I., NY 11706 LYNN DEZMAIN (516) 665-3890 Cambridge, Elegant Glass, D. G., Collectibles</p>	<p><b>GREEN ACRES FARM</b> 2678 Hazelton Etna Rd., Pataskala, OH 43062 (State Route 310 North) Sat. &amp; Sun. 1-7 PM 614/927-1882 Antiques, Crystal Glass and Collectibles</p>	<p><b>COSHOCTON ANTIQUE CENTER</b> 309 South 4th Street Coshocton, Ohio 25+ Dealers - Open 10 - 6 (Closed Mon, Winter) Glass Restoration &amp; Chair Caning 614 622-3223</p>
<p><b>THE HITCHING POST</b> 7467 S. R. 88 Ravenna, OH 44266 Ph. 216-296-3686 D. McDaniel <b>CAMBRIDGE — HEISEY — GENERAL LINE</b></p>	<p><b>PATCHES OF VIRGINIA THE ANTIQUES LOFT</b> 205 Main St. Chardon, OH 44024 Virginia T. Houston Home (216)975-8315 Bus.(216)285-3764</p>	<p><b>CRYSTAL LADY</b> 1819 Vinton St., Omaha, NE 68108 Joann D. Hagerty Bus. (402)341-0643 Res. (402)391-6730 Specializing in Elegant Glass &amp; Collectables</p>
<p><i>YOU CAN ADVERTISE YOUR ANTIQUE SHOP HERE!</i></p>	<p><b>REMEMBRANCES</b> 7597 Daphne Dr., No. Syracuse, NY 13212 Shirley S. Ladouceur 315 / 458-5297 ANTIQUES and COLLECTIBLES MAIL ORDER SHOWS APPOINTMENTS</p>	<p><b>MARGARET LANE ANTIQUES</b> 2 E. Main St., New Concord, OH 43762 Lynn Welker 614/826-4418 <b>CAMBRIDGE GLASS MATCHING SERVICE</b> Hours Mon.-Fri. 1-5 PM or by Appointment</p>
<p><b>GLASS RESTORATION</b> BRILLIANT CRYSTAL ELEGANT DEPRESSION DON &amp; LYNNE WORMLAND MT. CLEMENS, MICH. (313) 791-9191</p>	<p><b>AL STEELE</b> Westerville, Ohio 614-882-6483 or 614-882-7124 Mail Orders and Shows Only <b>HEISEY — CAMBRIDGE — PATTERN GLASS</b></p>	<p><b>BUD'S TRADING POST</b> GENERAL STORE — FLEA MARKET 501 Wheeling Ave. Cambridge, OH 43725 10-5 Mon. thru Sat. 614-432-4688 <b>CAMBRIDGE - PATTERN - ART GLASS</b> This Bud's for Y'all</p>



Postcard of Cambridge in early 1900s reprinted courtesy of Mark Nye.

## VISIT YOUR MUSEUM

### HOURS:

WEDNESDAY thru SUNDAY - 12 noon to 4 pm  
Closed Monday & Tuesday

CLOSED FOR WINTER  
November thru March

OCTOBER  
1989



National Cambridge Collectors, Inc.  
P. O. Box 416 Cambridge, Ohio 43725

FIRST CLASS MAIL  
U.S. POSTAGE  
PAID

So. Vienna, Ohio  
45369  
Permit No. 15

**FIRST CLASS MAIL**

### Membership Renewal Notice

This is your **last** issue of the *Crystal Ball*—if the date on your address label reads **10--89**  
*Please renew now!*