



Cambridge Crystal Ball

Published monthly by National Cambridge Collectors, Inc.
to encourage and report the discovery of the elegant and boundless product of the
Cambridge Glass Company of Cambridge, Ohio

Issue No. 242

June 1993

PRESIDENT'S MESSAGE

When you read these notes, it will be less than four weeks to the 20th Annual National Cambridge Collectors Convention. This is your opportunity to renew old friendships, study Cambridge Glass, and purchase that special addition to your collection.

Have you sent in your reservations for Convention?

Have you mailed your ballot to vote for Directors?

Have you made motel reservations?

If not, PLEASE do so NOW.

The Antique Show Chairperson reports the Antique Show is filled and there are several new dealers. A visit to the antique show is a MUST.

The Museum is beautiful and the committee continues to work toward improvement (if that is possible). A visit to the Museum and the new Paper Storage Room in the Storage building is also a MUST on your agenda.

Earlier this year, I reminded you that this is the 20th Anniversary of National Cambridge Collectors, Inc. Why not bring a small token of Cambridge Glass for the museum, in honor of our 20th Anniversary.

I look forward to meeting and greeting many of you at the Convention.

MOTEL INFORMATION

CAMBRIDGE FAIRDALE INN

6405 Glenn Highway, Cambridge, Ohio 43725. 614-432-2304. Located at the intersection of Interstate 70, Exit 176 and U.S. Routes 22 and 40, two miles west of the Courthouse. \$25.00 Single, \$30.00 Double. No extra for children. One week cancellation notice. Approximately 6 rooms available.

DEER CREEK MOTEL AND RESTAURANT

2325 Southgate Parkway, Cambridge, Ohio 43725. 614-432-6391. Located at Exit 178 off of Interstate 70, State Route 209 south. Also Exit 44B on Interstate 77. For reservations, call 1-800-637-2917. \$27.95 Single, \$33.95 Double. \$5.00 extra per person. 24 hour cancellation notice. Approximately 80 rooms available.

EL RANCHO

6653 Glenn Highway, Cambridge, Ohio 43725. 614-432-2373. Located at Interstate 70, Exit 176, turn right. \$32.50 Single, \$39.50 Double. Over age 12 \$3.00 extra. One week cancellation notice. Additional discount for Thursday-Saturday stay. Approximately 30 rooms available.

BEST WESTERN CAMBRIDGE

1945 Southgate Parkway, Cambridge, Ohio 43725. 614-439-3581. Located at Exit 178 off Interstate 70. \$49.00 Single or Double. No extra for children. One week cancellation notice. Approximately 50 rooms available.

HOLIDAY INN-CAMBRIDGE

PO Box 1270, Cambridge, Ohio 43725. 614-432-7313. Located at Interstate 70, Exit 178, travel north on State Route 209, 1/16th of a mile to the west side of State Route 209. \$49.00 Single, \$53.00 Double. No extra for children. One week cancellation notice. Approximately 25 rooms available.

CAMBRIDGE TRAVELODGE

PO Box 158, Southgate Parkway, Cambridge, Ohio 43725. 614-432-7375. Exit 178 off of Interstate 70. 10% off prevailing rate. One week cancellation notice. Approximately 15 rooms available.

DAYS INN CAMBRIDGE

2328 Southgate Parkway, Cambridge, Ohio 43725. 614-432-5691. Located at Exit 178 off of Interstate 70. \$53.00 Single, Double, Triple or Quad occupancy. Children free. Cancellation policy depends on type of reservation. Approximately 45 rooms available.

Cambridge Crystal Ball

Official Publication of National Cambridge Collectors, Inc. a non-profit corporation with tax exempt status. Published once a month for the benefit of its members. All rights reserved; reproduction in whole or in part without written permission of NCC and the author is prohibited.

Membership is available for individual members at \$15 per year and additional members (12 years of age and residing in household) at \$3 each. All members have voting rights, but only one *Crystal Ball* will be mailed per household.

Back issues of the *Crystal Ball* are available (beginning with Issue No. 1, May 1973) for members only. Cost: \$1.00 each or 12 issues for \$10.00.

1992-93 Officers & Committee Chairpersons

President	Joy R. McFadden
Vice-President	Marybelle Moorehead
Secretary	Joe Andrejcek
Treasurer	David B. Rankin
Sergeant-at-Arms	Cynthia A. Arent
Acquisitions	Joe Andrejcek
Budget & Finance	David B. Rankin
By-Laws	Tarzan Deel
Membership	J. D. Hanes
Museum--Facilities	Doyle Hanes
Museum--Interior	J. D. Hanes
Non-Glass Items	Judy Momirov, Tarzan Deel
Nominating	Mark A. Nye
Program	Willard Kolb
Project	Tarzan Deel
Publications	Mark A. Nye
Public Relations	Mark A. Nye
Publicity	Cynthia A. Arent
Study Group Advisor	Judy Momirov
1993 Auction	Lynn M. Welker
1993 Antique Show	Mary Beth Hackett
1993 Convention	Marybelle Moorehead
1993 Flea Market	Marlene & Harold Snyder
Crystal Ball Editor	Sue Rankin

Classified Advertising Rates

10 cents per word \$2.00 Minimum
 We cannot mix type size in classified advertisements. Abbreviations and initials will count as words. Payment in full must accompany all ads.

Display Advertising Rates

(Camera-ready ads preferred)	Members	Non-Members
1/8 page	\$6.00	\$10.00
1/4 page	10.00	15.00
1/2 page	18.00	25.00
3/4 page	25.00	35.00
Full page	33.00	45.00

Dealers Directory

Six-line maximum \$18.00 for 12 months

Cambridge *Crystal Ball* assumes no responsibility for items advertised and will not be responsible for errors in price, description or other information.

Advertising copy, articles, club news and notices must be in our P.O. Box by the 5th of each month to assure publication in our next issue.

Paid advertisements containing reproductions or new glass will not knowingly be accepted for publication.

Opinions or information stated in any signed article or letter printed in the *Crystal Ball* are those of the authors and may or may not agree with National Cambridge Collectors, Inc. The Editor reserves the right to refuse and to edit any material submitted for publication to conform with the editorial style of the *Crystal Ball*.

Please Address All Correspondence to:
 National Cambridge Collectors, Inc.
 P.O. Box 416, Cambridge, Ohio 43725-0416
President -- Joy R. McFadden 614/885-2726
Secretary -- Joe Andrejcek 216/226-3417
Editor -- Sue Rankin 513/833-4626
 NCC Museum -- 614/432-4245

Please notify us immediately of any change in your address.

Please enclose an SASE when requesting information.

CAMBRIDGE GLASS BOOKS FOR SALE

By National Cambridge Collectors, Inc.

- **Colors in Cambridge Glass ***
 128 pages, 60 color plates, fully indexed
 Hardbound with price guide. \$19.95
 - **1930-34 Cambridge Glass Company Catalog Reprint ***
 250-page reprint of original catalog
 Paperback with price guide. \$14.95
 - **1949-53 Cambridge Glass Company Catalog Reprint ***
 300-page reprint of original catalog
 Paperback with price guide. \$14.95
 - **1956-58 Cambridge Glass Company Catalog Reprint ***
 164-page reprint of original catalog
 Paperback. \$6.95
- * For NCC members only, the above publications are available at a 10 percent discount.

By Bill and Phyllis Smith

- **Cambridge Glass 1927-1929**
 66-page reprint of original catalog
 Paperback w/identification guide. \$7.95

By Cambridge Buffs Study Group

- **Nearcut**
 108-page reprint of 1910 Cambridge catalog
 Paperback with price guide. \$9.95
- **Price Guide**
 Updated price guide for Nearcut Catalog
 reprint (including postage). \$3.00

By Mark A. Nye

- **Cambridge Rose Point**
 94 pages, fully indexed
 Paperback with value guide. \$12.95
- **Value Guide**
 Updated value guide for Rose Point book
 (including postage). \$5.00

By Mary, Lyle and Lynn Welker

- **Cambridge Glass Company**
 120 pages of reprints from eight old catalogs
 Paperback. \$10.00
- **Cambridge, Ohio Glass in Color II**
 Spiralbound. \$5.95

By Harold and Judy Bennett

- **1903 Cambridge Glass Company Catalog Reprint**
 106-page reprint of an original catalog
 Paperback. \$7.50

Address your orders to:

Books
 National Cambridge Collectors, Inc.
 P.O. Box 416
 Cambridge, OH 43725-0416

Please add postage and handling to your order (first book, \$2.00; each additional book, 50 cents), Ohio residents add 6 1/4 percent state sales tax.

Dealer discounts available - please write!

How Green It Was

Part I
by Mark A. Nye

The May 14, 1923, issue of "CHINA, GLASS AND LAMPS" (CGL) contained one of the first trade journal references to several new transparent colors being produced by Cambridge. It was a news item, not a paid advertisement, and read as follows:

"CAMBRIDGE HAS NEW LINE OF COLORED GLASS SALAD PLATES An extensive line of salad plates in colored glass recently has been added to the lines of the Cambridge Glass Co., Cambridge, O. The plates come in 'Ebony', 'Azurite', 'Helio', 'Primrose Yellow' and in new shades of topaz, light green and mulberry. Made of colored glass, the plates have both plain and star bottoms. The Cambridge factory offers the plates in plain colors as well as in decorations such as contrasting colored edges and in light cuttings and gold encrustations.

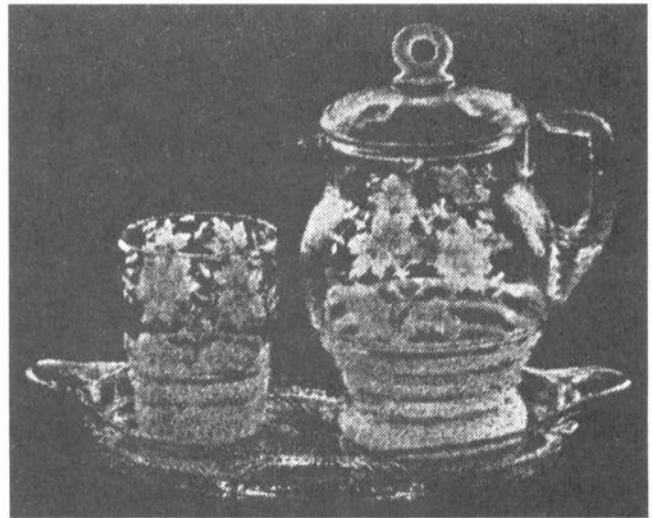
"In stemware, the Cambridge line has been increased by additions in colored glass. The new shades are topaz, light green and mulberry. The most wanted shapes come in the new colors, which should be of interest to those desiring something new and attractive in stemware."

The light green referred to in the preceding is the color Cambridge named Emerald and collectors today call Light Emerald. Unlike the earlier introduction of the opaque colors and later introduction of additional transparent colors, there was very little in "CHINA, GLASS AND LAMPS" regarding the introduction of Emerald, Topaz and Mulberry. The next direct mention of Emerald came in the January 14, 1924, issue of CGL containing a write-up of the 1924 Pittsburgh show.

"...There is a very complete line of mulberry, topaz and emerald glass, of candle sticks, jugs, bowls, tumblers and stemware that is colorful and interesting. A very comprehensive line of colored glass salad plates made us wonder why salad was ever served on any other sort of plates, for the pale green of lettuce would enhance the value of these colors, and the glass would make the salad all the more tempting. These plates match every style of glass ware they make...."

Several months later the CGL issue dated May 19, 1924, had this brief note:

"Just two days ago, The Cambridge Glass Co., 184 Fifth avenue, received the first samples of very attractive boudoir sets, consisting of a small covered jug, one glass and a well shaped tray, which are being made up in emerald, amber, mulberry, topaz and crystal, with band decorations and encrustations. At the same time the first samples of gold encrusted colored stemware arrived--in cobalt, amber, mulberry and emerald."



Boudoir Set

Later the same year, in the November 17 issue, a paragraph in a column entitled "New York Trade Notes" talked about another use of the new colors.

"The Cambridge Glass Co., 184 Fifth avenue, has some new refreshment sets of glass decorated in gold encrustations. The colors in which these are made are transparent blue, green and amethyst. Reproduced in gold encrustation on the rim are Mah Jong tiles. Two more gold tiles appear on the sides of the sherbets. Three Chinese characters appear in gold on one side of the bottom of the plate, opposite the indentation for holding the sherbet glass. Gold edge lines complete the decoration.

"The same design is used in ice tea sets and in boudoir sets. All of these are ready for Christmas business. The samples arrived in New York only last week."



Mah Jong Tile Etching
[from Miami Valley Study Group Project]

Again quoting from the "New York Trade Notes" column, this time from the CGL issue published April 20, 1925:

"The Cambridge Glass Co., 184 Fifth avenue, has added a great array of new things since my last visit. There are six new patterns in gold encrustation on their colored glass, all of it in a rather lacy effect, which is much more interesting than the solid bands. There is a new cocktail set made in amber and in emerald, with silver top. There are a number of new plates, both salad and bread and butter size, of colored glass with gold encrustations, showing six different designs. They are made in all colors, but the crystal, green, amber and mulberry are being featured, and are the most popular.

"A console set that is unusual consists of two large dolphin candle sticks and what appears to be a small temple jar with cover and base of black glass, and is shown in green and amber. These pieces look like faithful copies of old Sandwich glass.

"A new block optic is shown in amber, emerald and

mulberry, in fancy table ware, with plain or gold hair line edge. This block optic was originally made with a scalloped edge, but in the future it will be made only with a straight edge.

"The item that pleased me most here is a 27-inch [Surely, this was supposed to have read 27-piece not 27-inch. Ed. note] luncheon set available in either amber or green transparent glass. This consists of cream and sugar, 10½-inch bread plate, six eight-inch service plates, six seven-inch bread and butter plates and six cups and saucers. It is a marvelous summer item, and would be perfect for use on the porch or in the garden during the hot weather. The green glass is especially cool looking. It can be retailed anywhere between \$12 and \$15.

"There are some new lines of wire optic transparent green, mulberry and emerald stemware of a new shape, that include besides stemware, many tumblers, jugs and

plates, etc., and new pieces in the other various lines."

There appear to be errors in the last paragraph of the preceding quotation, since transparent green and emerald seem to be the same color. Perhaps "transparent green" should have read transparent amber. In addition, the term "wire optic" is unfamiliar and probably should be "wide optic."

Two weeks later, the "New York Trade Notes" column had this to say about some new items seen in the Cambridge display room.

"...A new hand made three-gallon fish globe on an ebony glass base has just arrived. It is made in green and amber, and the bottom of the bowl has a one-inch peg three inches in diameter fitting into the ebony glass base. It is unusually graceful in shape and will retail at about \$5.

"There is also a new pressed glass ribbed bowl of two-gallon capacity shown in green and amber, which also has a peg fitted into a black glass foot.

"An unusual group is a nest of three oval octagon relish dishes measuring 6½, 8½ and 10½ inches, samples of which have just been unpacked. These are made in green, amber and crystal, and are shown with etched design on the flat octagonal rim, as well as plain."

Jane Littell in her column "New York Trade Notes" dated October 26, 1925, commented on the Cambridge Fall offering in this manner.

"The lacy effect of the deep plate etchings on crystal and colored glass, with the fine lines left unpolished, has caught and held public attention. The Cambridge Glass Co., 184 Fifth avenue, have been having huge success with their deep plate etchings on green and amber stemware, tumblers, plates and even tea cups, sugars and creams. Indeed this concern is specializing on a luncheon set of glass ornamented with the lacy etching which may be had in two designs, either with or without gold lace edge lines. One of the designs available in the etching is a border which is used in their encrustations, and the other is a narrow border with a sort of pendant or drop which forms a wide lace-like design. A star center that looks like a huge snowflake, finished both designs.

"A new idea in decorations for glass is also shown at the Cambridge Glass Co., which consists of a needle etched encrustation on a narrow border design of crossed lines that gives a diamond effect to the gold band. A gold hair line on each side of the encrusted band and a gold edge make this a simple yet rich ornamentation. This decoration is used on their 3051 shape, and may be had on the new peachblo color, amber, green, amethyst or crystal."

And so it went through the middle to late 1920s and on into the 1930s. Cambridge produced little during these years that was not available in Emerald as well as most of the other Cambridge transparent colors. For readers who may be having difficulty visualizing Emerald (or light Emerald as it is called today), it is the green of "green" Apple Blossom and "green" Cleo.

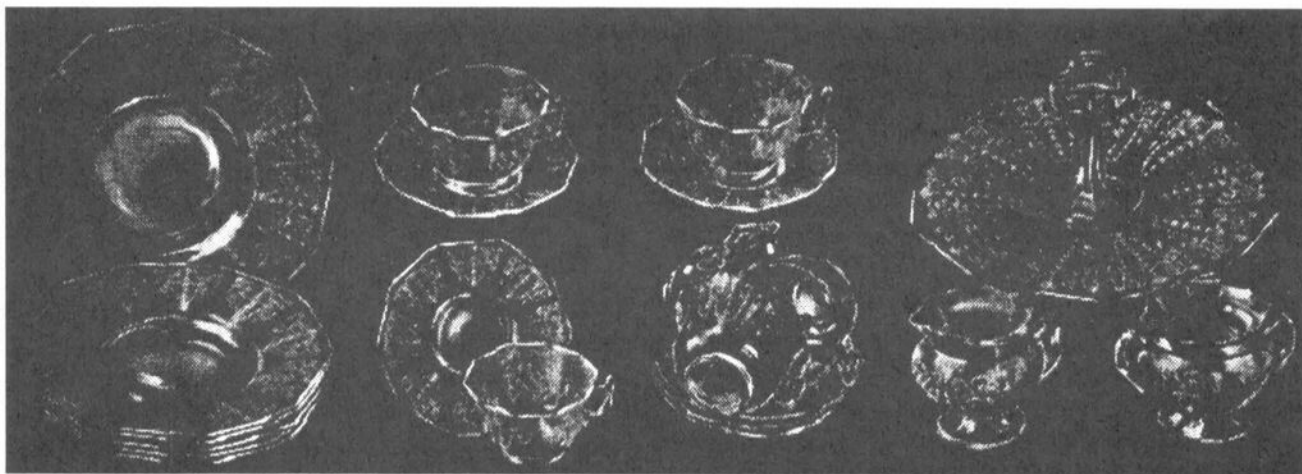
This month's article comes to a close with a quotation from the May 20, 1929, issue of "CHINA, GLASS AND LAMPS."

"In their attractive Decagon design, the Cambridge Glass Co., Cambridge, O., has announced a 21-piece luncheon set which should be most suitable for June and summer merchandising. The set is composed of six cups, six saucers, six salad plates, sugar, creamer and handled cake or sandwich tray, comprising complete service for a table for six.

"The Decagon shape in Cambridge glass is exceptionally well designed and fits in with the demand for wares which can be used with either Colonial or Spanish settings. The illustration shows the set in the Cleo pattern in etching. This is an exceptional pattern and has proved popular in stemware.

"The luncheon set is made in Willow Blue, an unusual shade of blue; in Peach-blo, a unique shade of pink, and in Emerald, a green of spring time freshness...."

To be continued



21-Piece Luncheon Set

MUSEUM MOMENTS

by J. D. Hanes

The Convention countdown is on! It looks as though Convention Chair, Marybelle Moorehead, has some interesting things planned for this year's convention. The Museum Committee has been busy and we have some different things for you to see this year also.

April was somewhat slow, with construction continuing on the bridge over the interstate west of the Museum. If you are planning to attend the Convention, please read the article on routing to the Museum in case this work is not completed as scheduled.

We received some donations this month. Two of these were monetary. One was from member Martha Gilbert and the other from the Depression Era Glass Society of Wisconsin. This is the third year that this organization has sent a donation specifically for the purchase of a piece of glass for the Museum.

The third donation, I have forgotten to mention for the past two months. I think senility must be setting in! Phyllis Smith donated two metal filing cabinets for storage of back issues of the Crystal Ball. For those of you who do not know, during all of the years that Phyllis was Editor of the Crystal Ball she housed all of the back issues at her house and would mail them when ordered. After her retirement last year, the Board decided it would be more efficient to start housing all of the organization's property at the museum complex. Because of this decision, all of the back issues were moved to the museum and storage building. We needed some extra cabinets to hold all of them. Phyllis graciously donated these file cabinets to help us out. Thanks, Phyllis! I'm sorry that I did not report these sooner.

In April I gave a presentation on Cambridge Glass and the Museum to the Business and Professional Women of Guernsey County. They had about 40 people attending. Many were quite interested in NCC and the Museum. Most took museum pamphlets and show cards.

If you plan to bring glass donations to the convention, please make sure that you give your donation to either Marybelle Moorehead, Shirley Beynon, Jeff Ross, Lynn Welker or me. We will give you a temporary receipt and this will ensure that you receive credit for your donation. Following this rule makes it easier to update the inventory and provide

lists of donations to the President and Treasurer for their records. We thank you in advance for helping us out this way.

Also, let me remind you to send in your convention reservations and your ballots. It looks like we have a very good slate of members running for the openings on the Board this year.

In closing, since I am writing this at the beginning of May, let me just say GO CAVS! in the NBA play-offs and GO INDIANS! in the American League. I can hear many of you sports fans, especially baseball fans laughing at me now! See you all at the convention!

Study Club News

Study Group #16 - Mid-Atlantic "Elegant Glass Collectors"

On April 25, 1993, seven members and one guest of the Elegant Glass Collectors met at Renningers' Extravaganza, Shupp's Grove, Adamstown, Pennsylvania.

We toured the Renningers' Flea Market, the Black Angus Flea Market, and Shupp's Grove Flea Market. Prices on Cambridge Glass were high, although a few bargains were to be had.

Observed on a dealer's table were a Moonlight Blue Caprice 3400 pitcher for \$325, and a Crystal Rose Point Doulton pitcher for \$275. A discolored blue alpine square cruet was priced at \$185.

New members to our group added five Decagon Willow Blue Cleo cups and saucers to their blue Cleo collection. Long-time members added five polo pony glasses to their collection.

After a pleasant picnic luncheon in the warm sun, we had a tailgate show and tell in the parking lot of Shupp's Grove. We plan to meet there at the end of September for the fall Extravaganza, if anyone wants to meet with us at noon. Our next meeting will take place at the Convention.

Submitted by
Pam Earussi

Club News

National Cambridge Collectors, Inc.
Quarterly Membership Meeting
February 26, 1993
Shenandoah Inn, Old Washington, Ohio

The meeting was called to order at 7:50 p.m. by President Joy McFadden. In attendance were about 50 members including 11 board members.

The minutes of the November 7, 1992, meeting of members were read by Secretary Joe Andrejcek. There were no additions or corrections and the minutes were approved as read.

Treasurer David Rankin reported that the operating profit for the year ended December 31, 1992, was \$5,703 for a total operating equity at December 31, 1992 of \$34,082. The Museum lost \$2,003 for the year 1992 leaving Museum equity at \$149,362 at December 31, 1992, and total equity of \$183,444. The checking account balance at February 25, 1993, is \$19,181.66 and the Money Market balance at January 31, 1993, is \$52,148.27 for a total cash balance of \$71,329.93.

COMMITTEE REPORTS:

MEMBERSHIP: J. D. Hanes, Membership Chairman, reported that we have 1093 master members, 402 associates, 5 honorary and 3 life members for a total of 1503. He further reported that Paul White, Crystal Ball poet laureate, is engaged to be married on June 26; that Midge Hughes, museum docent for many years, is in the hospital but should be getting out tomorrow; and that Jane Kersey, long-time member from Illinois and Study Club #11 reporter, died in late January. First time attendees were also introduced at this time.

CRYSTAL BALL: Editor Sue Rankin reported that the March issue had been mailed on Tuesday, February 23, to 1,060 members - 1,055 domestic and 5 foreign - including our first member in Japan. She further reported that the April issue will be our 20th Anniversary issue and she hopes to make it a special issue. As usual, she requested articles, ads and ideas for future issues.

PUBLIC RELATIONS: Chairman Mark Nye had no report.

AUCTION: Chairman Lynn Welker reported that the auction is ready to go and that he will preview items of particular interest during the program.

CONVENTION: Chairman Marybelle Moorehead reported that the convention is scheduled for June 24-27, 1993. Most activities will take place at the Prichard-Laughlin Civic Center. The Best Western motel will be the headquarters motel and the site of the Thursday night get acquainted party for dealers and early arrivals. This year's theme will be "Cambridge Greens" along with a 20th Anniversary celebration. She further reported that more details will be available in upcoming issues of the Crystal Ball.

FLEA MARKET: Chairman Marlene Snyder reported that the flea market will again be held at the pavilion at the Cambridge City Park. Contracts will go into the mail next week to all of last year's dealers. Hours and prices will be the same as last year.

ANTIQUÉ SHOW AND SALE: President McFadden reported for Chairman Mary Beth Hackett that the show and sale will be held at the Prichard-Laughlin Civic Center. Contracts have been mailed but more dealers are always needed. The advertising posters and cards are in hand and ads are ready to be placed.

MUSEUM INTERIOR: Chairman J.D. Hanes reported that the Museum will reopen for the season on March 3, 1993. There have been many display changes, particularly in the front room, with more planned. He showed several donations to the museum including a Crystal pressed Rose Point sherbet with Etched Rose Point on the bowl and a set of brass door knobs from the Cambridge Glass Company offices. He also showed a Carmen cordial set which is on loan to the Museum. Chairman Hanes further stated that the Museum is looking forward to a group of 5th grade visitors in the Spring.

NON-GLASS ITEMS: Co-Chairman Tarzan Deel reported on the Paper Preservation project. Due to the weather, the floor is still to be sealed. The Board has approved a bid from Fleming & Hartley for a 1-ton heating and air conditioning unit. Work will be completed before convention. The committee thanked Doyle Hanes for his work in securing bids.

MUSEUM EXTERIOR: Chairman Doyle Hanes had no report.

BYLAWS: Chairman Tarzan Deel had no report.

PROGRAM AND ENTERTAINMENT: Chairman Willard Kolb reported that the speakers for the Saturday night banquet will be John Artzberger and Holly McCluskey of the Oglebay Institute. They will talk on the Old Ohio Valley Glass Houses and the new Oglebay Museum. He further reported that a Saturday morning speaker may be eliminated but that more programs may be added Saturday afternoon. Watch your Crystal Ball for more information.

PUBLICITY: Chairman Cindy Arent reported that advertisements and press releases are going out now for the Show and Convention and ads were also placed in OHIO magazine and The Antique Trader.

PROJECTS: Chairman Tarzan Deel reported that they are looking into the possibility of producing the Mt. Vernon decanter in Milk Glass as a money raiser. The mold will be loaned to the club for the price of the freight, but they are still trying to locate the mold for the stopper.

PUBLICATIONS: Chairman Mark Nye reported that he hopes that the Caprice book will be ready by Convention, but this is not certain. He has gotten good response on his request for help with the first draft and now is working on addressing the corrections and questions raised. The revision of the Stemware book is on hold pending completion of the Caprice book. Dave Rankin reported for the Miami Valley Study Group that the etching book is under way. To date, 644 different etchings have been found, 144 of these have been cleaned up. This is a mammoth task and the final effort may end up in more than one volume. He also thanked Charles Upton for helping to identify the etching referenced in his article in the March Crystal Ball.

ACQUISITIONS: Chairman Joe Andrejcek reported that the committee has approximately \$5,000 to spend. He requested help from the membership in locating items on which to spend this money.

STUDY GROUP ADVISORY: Chairman Judy Momirov had no report.

MUSEUM EXPANSION/RELOCATION SPECIAL COMMITTEE: No report.

BUDGET AND FINANCE: No report from Dave Rankin, Chairman.

OLD BUSINESS:

COMMITTED TO CAMBRIDGE AWARDS: Mark Nye reported that as far as we know all awards have now been shipped.

NEW BUSINESS:

CRYSTAL BALL DELIVERY PROBLEMS: Dave Rankin reported on some of the delivery problems that we have encountered and pointed out that the majority of the problems that have come to our attention seem to be at the local delivery level. See your December 1992 Crystal Ball for more information. He further reported that he does want to be made aware of any problems so that we can do our best to expedite delivery.

NOMINATING COMMITTEE REPORT: Mark Nye, Chairman of the Nominating Committee, reported that his committee, consisting of Joyce Dawson, Louise Everett and Ed Chamberlain, were charged with presenting nominees to fill the expiring terms of Doyle Hanes, Willard Kolb and Joy McFadden. He reported that Willard Kolb has declined to run again. The committee placed the following names in nomination for a 4-year term to commence after the 1993 Convention:

Doyle Hanes
Richard Jones
Joy McFadden
Georgia Otten
R. F. (Bud) Walker

There being no nominations from the floor, the nominations were declared closed.

President McFadden reminded those nominated to see Sue Rankin, Crystal Ball Editor, about the biographies and photos needed for the May issue of the Crystal Ball.

Upon motion duly made and seconded the meeting was adjourned at 8:28 p.m.

Submitted by
Joe Andrejcek
Secretary

CONVENTION SPEAKERS



John A. Artzberger has been the Director of Oglebay Institute Mansion Museum since 1975. For several years before his appointment as Director, he served as the Museum's Curator of Collections. He holds a BA in History from West Liberty State College. Mr. Artzberger has worked with the Museum's glass collection since 1962 and has developed several exhibits and lectures on glass.

He will speak at the NCC banquet on the history of the Mansion's glass collection. John will mention the people and the glass factories who contributed to the Museum's development from the 1950s to the present.



Holly McCluskey is the Oglebay Institute Mansion Museum's Curator of Glass. She earned a Master's degree in Public History from West Virginia University in 1983. Mrs. McCluskey has worked for Oglebay since 1984, and has conducted many classes, seminars and lectures on Wheeling glass throughout the tri-state area. Currently, she is working on installing the Museum's glass collection in a new facility.

The Oglebay Institute Glass Museum is a gallery featuring nearly 3,000 examples of glass made in the Wheeling area. The Museum focuses on the history, products and legacy of the Wheeling glass companies. Holly will speak about this new museum at the NCC banquet.

Besides our two Banquet speakers, the Convention Committee has planned an afternoon of informative sessions. At noon Saturday, Past-president and author Mark Nye will talk about the new Caprice book scheduled for release later this summer.

One o'clock will find the Miami Valley Study Group presenting an informative session on Etchings and the Etching book project.

At 2 p.m., Lynn Welker, will conduct a session on Glass Identification. At 3 o'clock Lynn will moderate Bring and Brag where members get to show off their special finds.

Please be sure to attend all these sessions. You will learn a lot and are sure to enjoy yourself.

NATIONAL CAMBRIDGE COLLECTORS, INC.

ANNUAL CONVENTION

JUNE 24 - 27 1993

TENTATIVE SCHEDULE OF EVENTS

THURSDAY JUNE 24

10:00 AM Convention office opens at the Best Western Motel, Room 102.
Registration packets available for pick up.

4:00 PM Convention office closes.

7:00 PM Convention Chairman's Reception at the Best Western Motel, pool
side. Refreshments. Registration REQUIRED. Casual Dress.

FRIDAY JUNE 25

10:00 AM Convention Office opens at the Best Western Motel, Room 102.
Registration packets available for pick up.

Rest of day to yourself to discover Cambridge and the surrounding area.
Maybe a trip to Fenton, Mosser, Boyd's or one of the many antique
shops in the area. ENJOY!

4:00 PM Convention office closes.

4:30 PM Registration packets can be picked up at Civic Center.

5:00 PM Antique Show Opens. Name tag REQUIRED. Closes at 8:00 PM.

7:30 PM Opening Session at the Civic Center Galleria. Cash Bar, Dinner,
Announcements, Mini-Auction. Name tag & ticket REQUIRED.

SATURDAY JUNE 26

4:30-6:00 AM Flea Market set up, DEALERS ONLY! at City Park Large Pavil-
ion.

6:00 AM Flea Market opens to early bird shoppers. Admission \$5.00.

7:00 AM Flea Market opens to regular shoppers. Admission \$2.00

9:00 AM Continental Breakfast at the Civic Center Galleria. Name Tag
REQUIRED

SATURDAY JUNE 26 (CONTINUED)

11:00 AM Registration packets can be picked up at the ticket booth at the Civic Center. Antique show open until 5:30 PM.

12:01 PM Caprice Program, Mark Nye. Civic Center Conference Room.

1:00 PM "Etchings & the Etching Book", Miami Valley Study Group. Civic Center Conference Room.

2:00 PM Glass Identification Seminar, Lynn Welker. Civic Center Conference Room.

3:00 PM Bring and Brag, Lynn Welker. Bring your rare and unusual items for all to see. Civic Center Conference Room.

6:30 PM President's Reception, Civic Center Galleria. Cash Bar.

7:00 PM Annual Banquet. Name Tag REQUIRED. Speakers: John Artzberger and Holly McCluskey. Topics: Old Ohio Valley Glass Houses (John) and the New Oglebay Museum (Holly).

SUNDAY JUNE 27

8:00 AM Buffet Breakfast at Civic Center Galleria. Name Tag REQUIRED. NCC Annual Meeting following.

11:00 AM Antique Show reopens. Closes at 4:00 PM.

1:30 PM Former Cambridge Glass Workers reunion at the Museum. Phyllis Smith, coordinator.

MUSEUM DETOUR

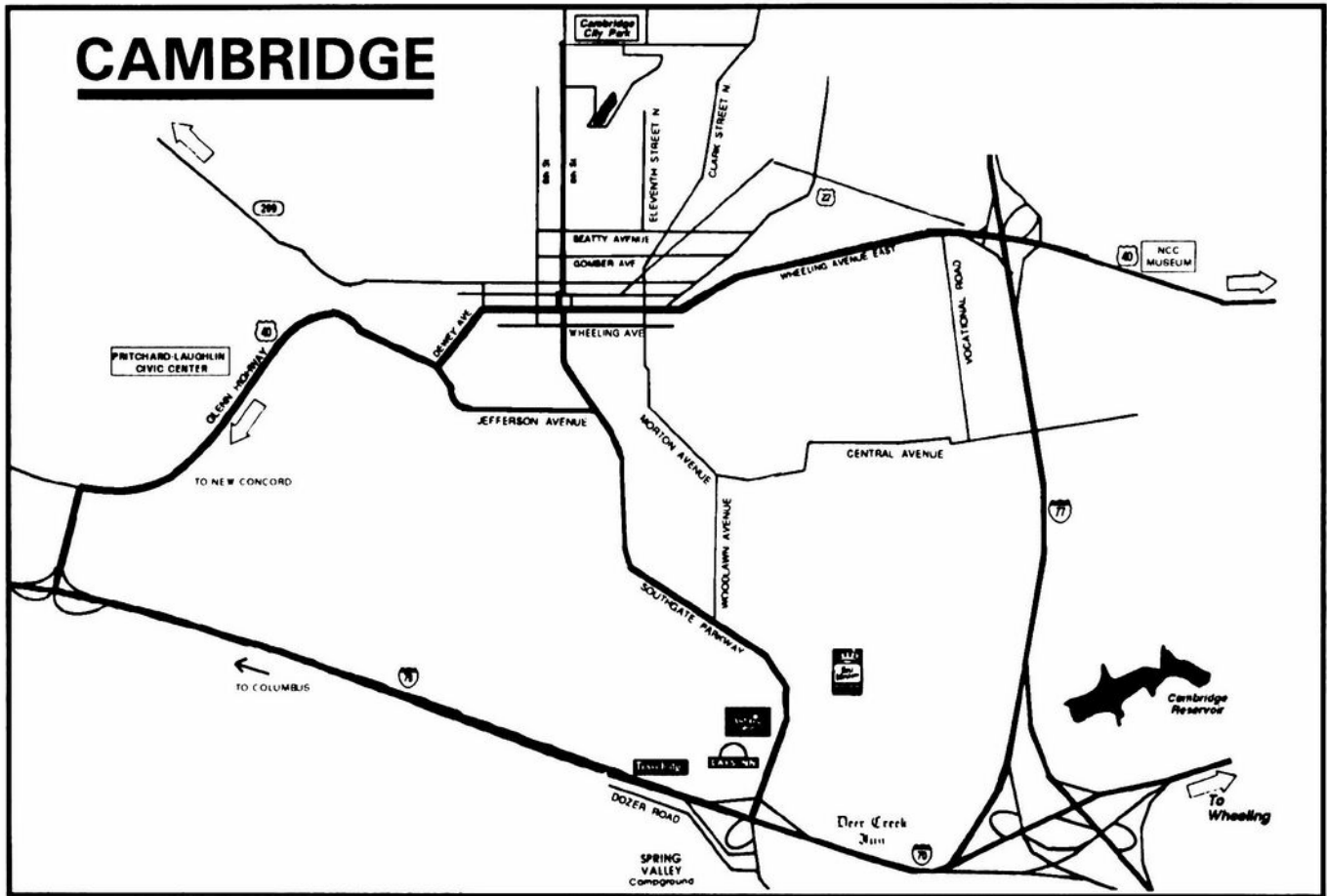
by J. D. Hanes

As I stated in last month's issue of the Crystal Ball, there is road construction on the bridge west of the museum over Interstate 77. State representatives assure me that they hope to have this bridge reopened by the first of June. However, reopening is contingent on the weather and other unforeseen problems. Therefore, I am going to list two alternatives for getting to the museum from the downtown Cambridge area.

The easiest detour is to take State Route 209, also known as Southgate Parkway to Interstate 70 East to Interstate 77 North. Then take the exit for U.S. 40 EAST. If you take U.S. 40 WEST, you cannot get to the museum. The lanes going East over the

interstate are the ones that are shut down.

The other way is to take Wheeling Ave., which is also U.S. 40 East from downtown to the traffic light at Byesville Road. This intersection has a Speedway/Starvin' Marvin' on the southeast corner. At this traffic light, turn right onto Byesville Road. Go straight through the next traffic light, and IMMEDIATELY after crossing the railroad tracks, turn right onto Ohio Ave. Follow Ohio Avenue until it dead ends at Corduroy Road and then turn left. Follow this until it dead ends at U.S. 40 and turn left. This will be East of the museum. I hope that these directions are not needed, but with construction, you never know.



18th Annual
**NATIONAL
CAMBRIDGE
COLLECTORS**

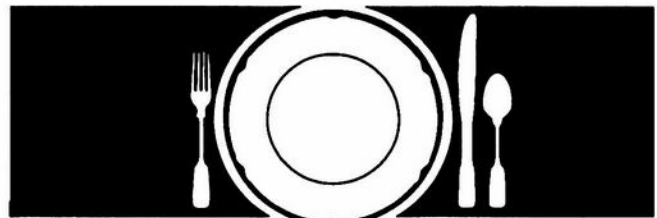
ANTIQUE SHOW & SALE
(& 20th Annual NCC Convention)

PRITCHARD LAUGHLIN CIVIC CENTER
INTERSTATE 70 .. EXIT 125 .. 1/4 MILE EAST ON ROUTE 40
CAMBRIDGE, OHIO

JUNE 25, 26, 27, 1993

HOURS	
FRIDAY, JUNE 25TH (PREVIEW-ADMISSION \$5.00)	5:00-8:00
SATURDAY, JUNE 26TH	11:00-5:30
SUNDAY, JUNE 27TH (ADMISSION \$2.50)	11:00-4:00

OFFERING CAMBRIDGE AND OTHER FINE GLASSWARE
(Including Hobey, Imperial, Fenton, Dundon, Tiffin, etc.)



How to Find Those Missing Pieces.

The world's largest source of discontinued china, crystal and flatware. Replacements, Ltd., buys and sells over 45,000 different patterns.

If you need a piece, or several pieces to add to your collection ... or if you'd like to sell some unneeded extras ... call or write us. We can provide you with a complete printout of available pieces in your pattern. Or we'll let you know our prices for the pieces you wish to sell.

Replacements, Ltd. — a 100,000 square foot facility; 1.5 million pieces; over 500,000 satisfied customers. Contact us, or come see our showroom. Let us help you complete your collection ... or maybe you'll help add to ours.

REPLACEMENTS, LTD.

Call 1-800-562-4462. Or write:
1089 Knox Road • P. O. Box 26029 • Dept. CB
Greensboro, NC 27420

OVER 7000 CAMBRIDGE PIECES

WE GET LETTERS

Dear Sue,

Enclosed are pictures that I took at the work day last Saturday [May 1]. I thought that they might be used in the Crystal Ball so members could see the new room at the storage building.

Cindy Arent
Cambridge

Dear Cindy,

Thanks for the pictures, Cindy, and Thank You, Don, for the help.



Preparing to move office furniture into the new room that is in the back corner on the left.



Doyle Hanes and Tarzan Deel inside the new room.



Don Conkle, who lives next to the museum, moved several heavy items from the museum to the storage building and graded the driveway.

Dear Sue,

On Sunday, April 18, my wife and I decided to do a little glass hunting in Pennsylvania. At one of the Flea Markets we came across a Cambridge goblet. In addition to the Cambridge label it had a show-room label which read:

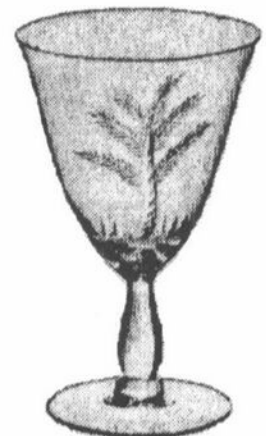
The Cambridge Glass Co.
3790 Goblet
Eng/Tropical (1083)
\$ 30.00
Made in the U.S.A.

The cutting is a single palm tree with grass at the base. The tree consists of six palm fronds. Enclosed is a rubbing. It does not do justice to the delicate cutting.

Bud Walker
Egg Harbor, New Jersey

Dear Bud,

Thank you so much for your note and the rubbing. Even though this engraving appears on page 184 of the 1949-53 catalog reprint, it is rarely seen. It is nice to know that it was actually produced.



ROBERT W. RILEY

PO Box 4180

Springfield, MA 01101

8-12 PM EST (413) 739-3669

P & I Extra

Etched

P101	Rose Point Cocktail Shaker	150
3500/101	Rose Point Blown Comport	55
P306	Daffodil 6" Candy & Cover	60
#3122	1 oz Diane Cordial	40
#321	1 ½ oz Lattice Whiskey (11) ea	10
#1327	1 oz Chantilly Cordial/Favor Vase	35

Nearcut

2630	Colonial Creamer & Covered Sugar	35
2635	Fernland 6" Rosebowl	35
2635	Fernland 8" Flared Vase	25
2699	#297 Buzz Saw 8 oz Oil	30
2780	Strawberry 8 oz Oil	45

Clear and Decorated

#924	1 ½ oz Sherry	9
#2	9" Krystalshell Dinner Plate	18
M157	Deviled Egg Plate	20
3500/17	12" Gadroon Bowl w/Rock Crystal Cutting	30
7966	9 oz Goblet D/1063 Talisman Rose	20
7966	4 oz Claret D/1063 Talisman Rose	20

Colors and Opaques

#277	9" Carmen Vase w/clear Foot	75
------	-----------------------------	----

SS40	Crown Tuscan Flying Lady Bowl	200
#512	8 ½" Light Emerald Rose Lady, Round Base	150
Amber	Tall Stem Honeycomb Covered Candy	50
#1043	8 ½" Light Emerald Swan (Signed)	150
#2917	Ebony Ladle	40
3500/13	Amethyst Gadroon Sugar Basket	30
3400/154	76 oz Amber Doulton Jug and (10) #1070 14 oz pinched tumblers	set 160
Ebony	Farber Console Set: #16 7" bowl w/Farber Foot & Reticulated cover and #625 Farber Trimmed Candlesticks	set 90
Yardley	Jar, Tan w/ Plastic Lid	15
#63	6" Helio Comport	55
2800/235	Community 7 ½" Azurite Candlestick	50
1299	11" Amber Vase w/Clear Foot	40
2860	8" Amber Lexington Bowl, Rolled Lip	35
Frosted	Topaz Wetherford Berry Set: Master Bowl, Painted Flowers	75
	2 Small Bowls, Painted Flowers	ea 40
	2 Small Bowls, Plain	ea 40

3 Moonlight Blue Caprice pressed wines, \$95 each

2 Gold Krystal #3900 four-footed nut cups, Apple Blossom etch, marked, \$50 each

Forest Green swirl patterned muddler, \$20

Shipping included. Write wants, I search: Cambridge, Heisey, Fostoria, Duncan-Miller, Paden City, New Martinsville, etc. Send detailed want list, all are kept on file.

Michael Krumme

P. O. Box 5542

Santa Monica, CA 90409-5542

(213) 936-4214

DEADLINE FOR CONVENTION REGISTRATION

(must be received by this date)

June 14, 1993

DEADLINE FOR RETURNING BALLOT(s)

(must be received by this date)

June 17, 1993

ISAACS ANTIQUES



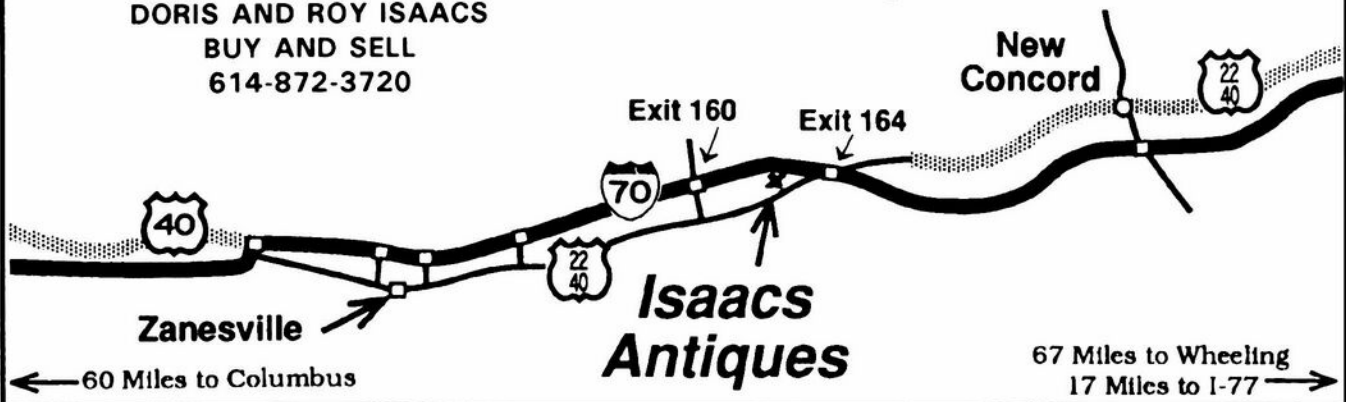
WE FEATURE GLASSWARE OF: CAMBRIDGE,
HEISEY, FENTON & FOSTORIA
Plus Art Pottery & a General Line of Antiques

DORIS AND ROY ISAACS
BUY AND SELL
614-872-3720

7525 East Pike
Norwich, Ohio 43767
614-872-3720

In East Pike Antique Complex - Rt. 40,
One Mile West of I-70 Norwich Exit #164

Hours 10 - 5:30 Mon. - Sat.
12 - 5:30 Sun.
Open Year Round



First Annual FOSTORIA, OHIO ANTIQUe GLASS SHOW & SALE

Fostoria High School
1001 Park Ave.
Fostoria, Ohio

from US Rte 23 (N. Countyline St.) turn West
on Park Ave. to the High School

FRIDAY - SATURDAY - SUNDAY
June 18-20, 1993

Fri. 4:00 to 7:00 p.m. * Sat. 10:00 a.m. to 5:00 p.m.
Sun. Noon to 5:00 p.m.

Featuring antique glass and associated items
by all manufacturers. Ample Parking.

Admission: \$4.00 Friday Preview;
\$2.00 Saturday or Sunday

Sponsored by the Fostoria, Ohio Glass Association,
109 N. Main St., Fostoria, Ohio 44830
Contact: Edson Smith (419) 435-8850
Edson Reed (419) 435-1939

WE CLEAN CLOUDY GLASS!

**** SATISFACTION GUARANTEED ****

YES, IT IS TRUE THAT WE REALLY CAN RESTORE THE INTERIOR
OF YOUR CRUET, VASE, DECANTER AND MOST OTHER
INTERNALLY ETCHED ITEMS BACK TO NEAR ORIGINAL
CONDITION!

WE DO NOT OIL, WAX OR COVER UP THE SICKNESS IN ANY WAY!
WE ACTUALLY REMOVE IT.

NO ITEMS ARE TOO SICK TO CLEAN! IF WE CANNOT CLEAN YOUR
ITEM TO MEET YOUR SATISFACTION, THE CLEANING IS FREE!

WE ARE SO CONFIDENT IN OUR SERVICE THAT WE ASK THAT
YOU SEND NO MONEY. WHEN WE RETURN YOUR ITEM A BILL
WILL BE ENCLOSED FOR THE POSTAGE & CLEANING. IF YOU ARE
HAPPY, PLEASE SEND PAYMENT; IF NOT, RETURN THE BILL
MARKED "NOT SATISFIED".

PLEASE ALLOW 6-8 WEEKS FOR REDELIVERY OF MOST ITEMS. ALL
GLASS IS HANDLED AND CLEANED AT YOUR RISK. SOME VERY
CLOUDY ITEMS MAY TAKE SEVERAL ADDITIONAL WEEKS.

CRUET	\$20.00	COCKTAIL SHAKER	\$30.00
COLOGNE	\$20.00	SALT SHAKER (SINGLE)	\$15.00
WATER BOTTLE	\$30.00	SALT SHAKER (PAIR)	\$25.00
DECANTER	\$30.00	CRUSHED FRUIT JAR	\$30.00
VASES (UNDER 12 IN.)	\$25.00	LAVENDER JAR	\$20-30.00

ALL OTHERS WRITE FOR QUOTE

SHIP TO: CARLISLE & ASSOCIATES
28220 LAMONG ROAD, DEPT. C
SHERIDAN IN 46069
(317) 758-5767 AFTER 6:00 P.M.

Betty E. Bryner
 PO Box 53
 Umatilla, FL 32784
 (904) 669-6949

3011 Stems

Ivy Ball, Royal Blue	\$225.00
Compote, flared, Carmen	185.00
Compote, flared, Crystal	120.00
Compote, flared, Royal Blue	185.00
Compote, shell, Emerald	425.00
Compote, cupped, Carmen	185.00
Goblet, water, Royal Blue	155.00
Goblet, water, Amber	130.00
Claret, Royal Blue	175.00
Claret, Carmen	175.00
Claret, Crystal, ribbed	110.00
Claret, Emerald	120.00
Claret, Gold Krystol, ribbed	200.00
Brandy, Emerald	99.00
Brandy, Amethyst	99.00
Brandy, Gold Krystol	125.00
Cocktail, Tahoe Blue	145.00
Cocktail, Moonlight Blue	200.00
Cocktail, Pistachio	145.00
Cocktail, Emerald	99.00
Cocktail, Amber	99.00
Cocktail, Royal Blue	135.00
Cocktail, Amethyst	99.00
Cocktail, Gold Krystol	145.00
Banquet, Amethyst	300.00
Banquet, Emerald	325.00
Candles, pair, Crown Tuscan	300.00
Wine, Emerald	145.00

Frogs

Draped, Crystal	60.00
Two kids, Amber	300.00
Draped, Mandarin Gold	235.00
Draped, green, frosted	165.00
Rose Lady, green, frosted	225.00
Draped, Mocha, large	350.00
Draped, Amber, large	300.00

Animals

Lion	155.00
Eagle	75.00
Pouter Pigeon	85.00

1070

Pinch decanter and six 2 oz tumblers	155.00
---	--------

**FENTON ART GLASS
 COLLECTORS OF
 AMERICA, INC.**

17th Annual Convention

August 3, 4, 5, 6th 1993

Holiday Inn

Parkersburg, West Virginia 26105

Glass Display room and
 Seminars - Public Invited

Banquet, Annual Meeting, Special meetings,
 Special factory tour - members only

Fun for the entire family. Visit the Flea Mar-
 kets, Glass Sales by Members, tours of the
 Glass Factory, ride the Paddle Wheel on the
 Ohio River.

For further information call: 1-304-375-6196 Mon-
 day thru Wednesday 7:30 A.M. to 1 P.M.



**17th ANNUAL
 NATIONAL IMPERIAL
 GLASS COLLECTORS'
 SOCIETY
 CONVENTION**

**HAMPTON INN/STONE CRAB RESTAURANT
 ST. CLAIRSVILLE, OHIO**

BANQUET - - Open to Public
 Must have reservations
 Saturday, June 12, 7:00 P.M.

BELMONT TECHNICAL COLLEGE
 (Four miles west of Hampton Inn - I-70 Exit 213)

SHOW & SALE - - Displays Open to Public
 Saturday, June 12 1:00 p.m. to 5:00 p.m.
 Sunday, June 13 12:00 p.m. to 4:00 p.m.
 Admission: \$2.00 Donation

SEMINARS - - Open to Public
 Saturday, June 12, 8:30 a.m. to 10:00 a.m.
 Former Imperial Glass Employees
 Sunday, June 13, 1:30 p.m. to 3:00 p.m.
 Candlewick - - "At Home in Any Home"
 Authors Virginia Scott & Mary Wetzel

Guest: Teri Steele, Editor/Publisher "THE DAZE"

P.O. BOX 534 - BELLAIRE, OH 43906
 (419) 637-2695 - - (216) 481-3628 - - (419) 995-1254

1993 THIRTEENTH ANNUAL

Fostoria Glass Society CONVENTION SHOW & SALE

"Marvelous Master Etchings"

DEL NORONA MUSEUM

Eighth Street & Jefferson Avenue
Moundsville, West Virginia

Friday, June 11, 1993 Premiere Show and Sale	Premiere Admission \$6.00 6:00 P.M. - 9:00 P.M.
Saturday, June 12, 1993 Show and Sale Glass Auction Marshall County Fairgrounds 12th Street, Moundsville, W. Va.	General Admission \$3.00 11:00 A.M. - 5:00 P.M. 6:00 P.M.
Sunday, June 13, 1993 Flea Market Show and Sale	10:00 A.M. - 2:00 P.M. 11:00 A.M. - 4:00 P.M.

Moundsville Chapter Flea Market June 13, 1993

Set-Up 8:00 A.M. \$15 Per Couple Fee
Early Buyer Fee \$15 Per Couple
Free Admission at 10:00 A.M.
Contact Ralph Wright — (304) 845-2748



For More Information Contact:
Fostoria Glass Society of America, Inc.
P.O. Box 826 Moundsville, W. Va. 26041
or Call (304) 737-2006



NINETEENTH ANNUAL CONVENTION, SHOW AND SALE

LITTLE ROCK, ARKANSAS
HALL OF INDUSTRY
ARKANSAS STATE FAIRGROUNDS
(West Roosevelt Road - I-30 Exit 139A)

July 10 & 11, 1993

Sat. 10 a.m. to 5 p.m. - Sun. 11 a.m. to 5 p.m.
Admission: \$2.50 (good both days)

36 top quality dealers from across the United States present an outstanding display of Depression Era Glassware including Cambridge, Imperial, Heisey, Fenton & Fostoria; china; pottery and related items of the era.

*DISPLAYS! SLIDE PROGRAMS! SEMINARS!
SPECIAL GUESTS! DOOR PRIZES!*

Information: Anita Wood
N.D.G.A.

P.O. Box 69843, Odessa, Texas 79769

(915) 337-1297

(501) 375-0435

PUBLIC WELCOME!

TIFFIN GLASS COLLECTORS CLUB 8th ANNUAL SHOW AND SALE

Featuring "Tiffin" and other glass of the Depression Era

TIFFIN UNIVERSITY



Gillmor Center
155 Miami Street
Tiffin, Ohio



Friday, June 25, 1993 — 7:00 p.m. to 9:00 p.m.

Premier Admission \$5.00

Saturday, June 26, 1993 — 10:00 a.m. to 5:00 p.m.

Sunday, June 27, 1993 — 11:00 a.m. to 4:00 p.m.

General Admission \$2.00 (Good Both Days)

For more information, call
(419) 447-4452 or 447-5505

Guests: Fred Bickenheuser, Tiffin Glassmasters Author
Jerry Gallagher, Morgantown Glass Author

4th ANNUAL CONVENTION OLD MORGANTOWN GLASS SHOW & SALE

FEATURING "MORGANTOWN" & OTHER GLASSWARE
OF A BYE-GONE ERA

JUNE 11, 12, 15TH ST. MARY'S
PEACE HALL, STAR CITY
MORGANTOWN, WV
I-79 EXIT 155 1 MILE

FRIDAY 7-9PM PREMIER SHOW & SALE
\$5.00 SPECIAL ADMISSION

SATURDAY 9AM-5PM SHOW & SALE
10AM FACTORY WORKERS COFFEE
1-3PM EDUCATIONAL SEMINARS
6:30PM CONVENTION BANQUET &
SILENT AUCTION

*ADVANCE RESERVATIONS REQUIRED
*P.O. BOX 894, MORGANTOWN, WV 26507-0894

SUNDAY SHOW & SALE
12 NOON - 4PM

DEALER INQUIRIES: MATT ELLENBERG
PHONE 609-946-6472

PUBLIC INVITED TO ALL EVENTS
PARKING AT DOOR
\$2.50 GENERAL ADMISSION
(GOOD BOTH DAYS)

DEALERS



DIRECTORY

NOTE: When writing to the Dealers listed here, please enclose a SASE!

<p>DAUGHERTY'S ANTIQUES Jerry and Shirley Antiques and Collectibles * Mostly Glass Shows & Mail Orders 2515 Cheshire No. 402-423-7426 Evenings Lincoln NE 68512</p>	<p>BENICIA ANTIQUE SHOP 305 First Street Benicia, California 94510 OPEN 11 AM - 5 PM Closed Monday Z. E. LOPES 707-745-0978 VISIT HISTORIC BENICIA and its 28 shops Off Interstate 80 North of San Francisco</p>	<p>THE MUTED SWAN ANTIQUES 5486 Peachtree Rd. Chamblee, GA 30341 Heart of Chamblee Antique Row Specializing in Cambridge, Heisey and Fostoria Bill & Pat Miller 404-451-7620</p>
<p>MILBRA'S MATCHING SERVICE P.O. Box 363, Rio Vista, TX 76093 Milbra Long 817-645-6066 FOSTORIA * CAMBRIDGE * HEISEY DEPRESSION ERA GLASSWARE BUY AND SELL</p>	<p>ANTIQUES ON THE MALL SPECIALIZING IN CAMBRIDGE GLASS Bogart's - Bldg #3 - Norwich, OH Virginia Bennett 614-432-4483 64183 Warne Drive, Cambridge, OH 43725</p>	<p>ARMORY ANTIQUES 168 West Main Street Plain City, OH 43064 QUALITY THINGS Cambridge, Heisey, China, Silver, Furniture Mon-Sat 10-5 VISA/MC 614-873-4890</p>
<p>THE GLASS URN 456 West Main Street, Suite G Mesa, AZ 85201 602-833-2702 Mail Order Shows Open Shop CAMBRIDGE, FOSTORIA, HEISEY, ETC.</p>	<p>D & D ANTIQUES Columbus, Ohio Dick Slifko SHOWS ONLY</p>	<p>GATEWAY ANTIQUE MALL JUST NW OF MINNEAPOLIS-ST PAUL, MN <i>Intersection of I-94 & 101/NORTH</i> (Look for our 75' High Sign) 7 Days/10-6 612-428-8286 ELAINE STORCK, PROPRIETOR</p>
<p>ETTELMAN'S DISCONTINUED CHINA & CRYSTAL Cambridge a Speciality P.O.Box 6491-CB Corpus Christi TX 78466 Phone 512-888-8391 Include S.A.S.E.</p>	<p>JUDY'S ANTIQUES Judy Bennett 422 S. Ninth Street (Corner of Jefferson) Cambridge, Ohio 43725 BUYING Ph.614-432-5855 SELLING CAMBRIDGE GLASS MY SPECIALTY</p>	<p>RONI SIONAKIDES 6565 W. Herbison Rd. DeWitt, MI 48820 517-669-5981 Fostoria, Tiffin, Duncan, Cambridge</p>
<p>THE GLASS CUPBOARD P. O. Box 652 West End, North Carolina 27376 Marcia Ellis Cambridge, Duncan, Heisey 919-673-2884 Shows, Mail Order</p>	<p>GREEN ACRES FARM 2678 Hazelton Etna Rd., Pataskala, OH 43062 (State Route 310 North) Sat & Sun 1-7 PM 614-927-1882 Antiques, Crystal Glass and Collectibles</p>	<p>"HAPPINESS IS" Buddy and Kathy Stultz 3106 Warren Court, Glen Allen, VA 23060 804-672-8102 Specializing in American Made Glass We Buy & Sell, Shows & Mail Order</p>
<p>ELEGANT GLASSWARE Barbara & Cindy Brock Rt. 1, Box 66AC, Callands, VA 24530 804-724-6762 Cambridge - Heisey - Duncan - Fostoria</p>	<p>YOU CAN ADVERTISE YOUR ANTIQUE SHOP HERE!</p>	<p>CROW'S NEST ANTIQUES Constance Crow Buying & Selling Elegant Depression Era Glassware Austin Antique Mall 8822 McCann Austin, TX 78758 512-371-0244</p>
<p>YOU CAN ADVERTISE YOUR ANTIQUE SHOP HERE!</p>	<p>REMEMBRANCES 7597 Daphne Dr., No. Syracuse NY 13212 Shirley S. Ladouceur 315-458-5297 ANTIQUES and COLLECTIBLES MAIL ORDER SHOWS APPOINTMENTS</p>	<p>CRYSTAL LADY 1817 Vinton St., Omaha, NE 68108 Joann D. Hagerty Bus. 402-341-0643 Res. 402-391-6730 Specializing in Elegant Glass & Collectibles</p>
<p>YOU CAN ADVERTISE YOUR ANTIQUE SHOP HERE!</p>	<p>WATKINS (Fine Quality) CAMBRIDGE GLASS SHOP 1429 Marquand Ave. (Corner of Woodlawn) Cambridge, OH 614-432-4460 Lana Watkins</p>	<p>MARGARET LANE ANTIQUES 2 E. Main St., New Concord, OH 43762 Lynn Welker 614-826-7414 Cambridge Glass Matching Service Hours Mon-Fri 10-12AM, 1-5PM or by Appointment</p>
<p>GLASS RESTORATION BRILLIANT CRYSTAL ELEGANT DEPRESSION DON & LYNNE WORMLAND MT. CLEMENS, MICH 313-468-3519</p>	<p>HELEN & JIM KENNON Heisey, Cambridge, Fostoria, Duncan, Imperial, Fenton, Tiffin P.O. Box 114, Brookville, OH 45309 PH: 513-833-5406 SHOWS ONLY</p>	

DUNCAN MILLER FENTON HEISEY

The National Duncan Glass Society

TIFFIN
FOSTORIA
IMPERIAL
CAMBRIDGE

FRY
OLD PRESSED GLASS
MORGANTOWN



Presents



18th Annual Duncan & Miller Convention

Show, Sale and Auction

July 10 & 11 11:00 A.M. to 5:00 P.M.

Alpine Club

735 Jefferson Ave., Washington, PA
I-70 Exit 6 1/2 Mile

Auction Friday, July 9, 6:30 P.M.
Washington Co. Fairground, 4-H Building

Guest Speakers, Authors and Book Sales
Banquet Saturday, July 10

ADMISSION: \$2.50

For Information Call: (412) 222-6376
(412) 746-2572

NEW MARTINSVILLE PADEN CITY

HEISEY COLLECTORS OF AMERICA, INC.
presents



OUR NEW LOOK
1993 Convention



LOOKING FOR DIAMONDS
1993 Twenty-second Annual Show and Sale

LOOKING BEAUTIFUL
Heisey Glass Display

OSUN-COTC Newark Campus
Country Club Drive, Newark, Ohio

(Wednesday June 16th, Members only Weiner Roast)

Thursday June 17, 5p.m. to 9 p.m.*

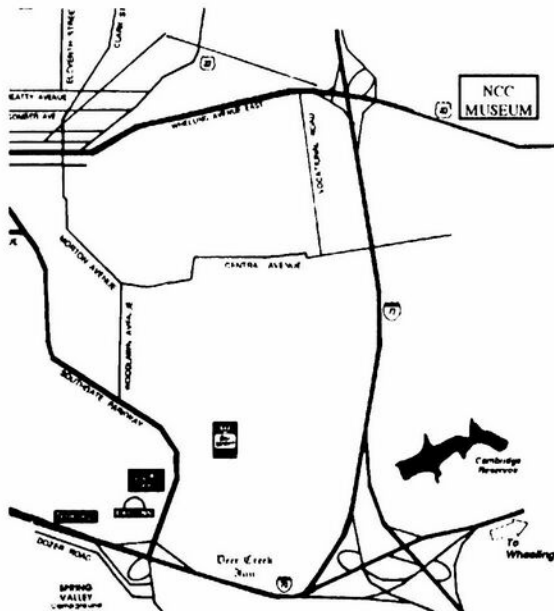
*Thursday Preview-registered members \$7.00

Non registered members and general public \$10.00

Friday June 18th 12 Noon to 7 p.m.
Saturday June 19th 12 Noon to 5 p.m.
Sunday June 20th 12 Noon to 5 p.m.

Donation \$2.50 (50 cents off with Ad)

Benefits the National Heisey Glass Museum



NCC Museum of Cambridge Glass

The museum is located on U.S. Route 40, one-eighth mile east of I-77 near Cambridge. Hours: 10 a.m. to 4 p.m., Wednesday through Saturday; noon to 4 p.m., Sunday (March through October). Phone 614-432-4245. Closed Mondays, Tuesdays, Easter and the 4th of July.

National Cambridge Collectors, Inc.
P.O. Box 416, Cambridge, Ohio 43725-0416

NON PROFIT
ORGANIZATION
U. S. POSTAGE
PAID
Dayton, OH
Permit #974

FORWARDING AND RETURN
POSTAGE GUARANTEED

PLEASE DELIVER PROMPTLY, DATED MATERIAL.

Membership Renewal Notice

This is your last issue of the *Crystal Ball*, if the date on your address label reads 6/93.

Please renew now!