



Cambridge Crystal Ball

Published monthly by National Cambridge Collectors, Inc.
to encourage and report the discovery of the elegant and boundless product of the
Cambridge Glass Company of Cambridge, Ohio

Issue No. 258

October 1994

1994 August Quarterly Meeting

by Cindy Arent

If you were unable to attend the August Quarterly meeting and picnic, you missed an afternoon of delicious food and fellowship. Before the lunch, NCC member Joanne Paul gave the blessing, followed by a moment of silence in memory of Doyle Hanes.

After enjoying an outstanding picnic lunch, NCC president Joy McFadden called the meeting to order with twenty-one members present. Committee reports were given by those Chairmen present.

Membership chairman Jeff Ross said that as of August the membership total was 1,454. Jeff also mentioned that he is in the process of developing a system to track the reasons why one-year members do not renew their memberships.

Marybelle Moorehead announced that the November meeting will be held at "The Cove" Restaurant in Cambridge. Reservation information is available on page 20 of this issue.

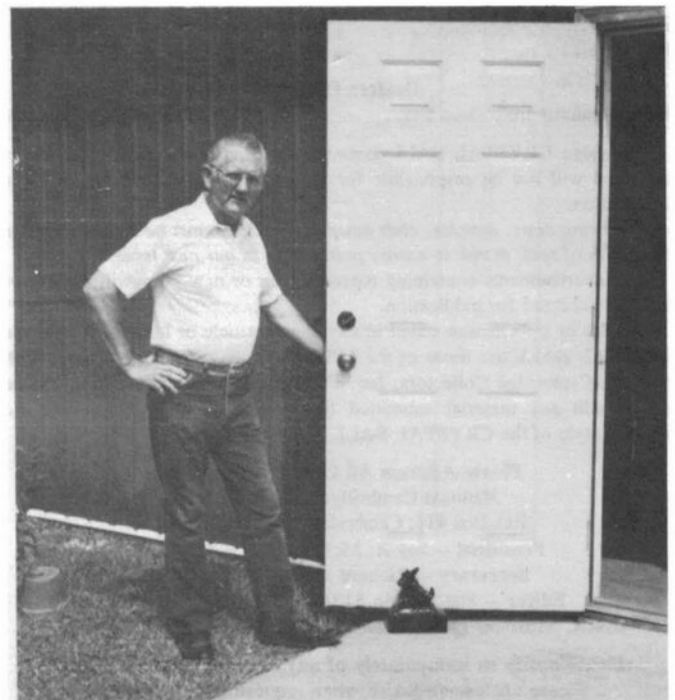
Members Everett and Shirley Patterson always bring interesting items for Show and Tell. This year they displayed a very unusual Ebony Scotty Dog bookend/door stop. Everett said that he found it at an Antique Mall.

Following the meeting, the Museum was open for an informal tour. Several members tried to decide what their favorite piece of glass in the Museum would be if they could choose just one! This was an almost impos-

sible task because of the many wonderful items on display.

The next quarterly meeting will be Saturday, November 5 at "The Cove" Restaurant in Cambridge. For those not familiar with the area, it is located beside the Deer Creek Motel on Southgate Parkway (Route 209 and I-70).

We hope to see you there!



Cambridge CRYSTAL BALL

Official Publication of National Cambridge Collectors, Inc. a nonprofit corporation with tax exempt status. Published once a month for the benefit of its members. All rights reserved; reproduction in whole or in part without written permission of NCC and the author is prohibited. Membership is available for individual members at \$17 per year and additional members (12 years of age and residing in household) at \$3 each. \$12.00 of the \$17.00 annual dues is for a 1 year subscription to the Cambridge CRYSTAL BALL. All members have voting rights, but only one CRYSTAL BALL will be mailed per household. Foreign mailings subject to a postage surcharge. Back issues of the CRYSTAL BALL are available (beginning with Issue No. 1, May 1973) for members only. Cost: \$1.00 each or 12 issues for \$10.00.

1994-95 Officers & Committee Chairpersons

President	Joy R. McFadden
Vice-President	Mark A. Nye
Secretary	Richard Jones
Treasurer	David B. Rankin
Sergeant-at-Arms	Cynthia A. Arent
Acquisitions	Joe Andrejcek
Budget & Finance	David B. Rankin
By-Laws	Charles Upton
Long Range Planning	Rick Jones, Tarzan Deel, Mike Arent
Membership	Jeff Ross
Museum Expansion/Relocation	Willard Kolb, J. D. Hanes
Museum--Facilities	Carl Beynon, Joe Miller
Museum--Interior	J. D. Hanes
Non-Glass Items	Tarzan Deel
Nominating	Mark A. Nye
Program	
Project	Tarzan Deel
Publications	Mark A. Nye
Publicity	Cynthia A. Arent
Study Group Advisor	Marybelle Moorehead
1995 Auction	Lynn M. Welker
1995 Antique Show	Mary Beth Hackett, Charles Upton
1995 Convention	Mark A. Nye
1995 Flea Market	Marybelle Moorehead
CRYSTAL BALL Editor	Sue Rankin

Classified Advertising Rates

10 cents per word \$2.00 Minimum
We cannot mix type size in classified advertisements. Abbreviations and initials will count as words. Payment in full must accompany all ads.

Display Advertising Rates

(Camera-ready ads preferred)	Members	Non-Members
1/8 page	\$10.00	\$15.00
1/4 page	15.00	25.00
1/2 page	25.00	35.00
3/4 page	35.00	50.00
Full page	45.00	60.00

Dealers Directory

Six-line maximum \$24.00 for 12 months

Cambridge CRYSTAL BALL assumes no responsibility for items advertised and will not be responsible for errors in price, description or other information.

Advertising copy, articles, club news and notices must be in our P.O. Box by the 5th of each month to assure publication in our next issue.

Paid advertisements containing reproductions or new glass will not knowingly be accepted for publication.

Opinions or information stated in any signed article or letter printed in the CRYSTAL BALL are those of the authors and may or may not agree with National Cambridge Collectors, Inc. The Editor reserves the right to refuse and to edit any material submitted for publication to conform with the editorial style of the CRYSTAL BALL.

Please Address All Correspondence to:

National Cambridge Collectors, Inc.
P.O. Box 416, Cambridge, Ohio 43725-0416
President -- Joy R. McFadden 614/885-2726
Secretary -- Richard Jones 914/631-1656
Editor -- Sue Rankin 513/833-4626 Phone & Fax
NCC Museum /J. D. Hanes -- 614/432-4245 Phone & Fax

Please notify us immediately of any change in your address.

Please enclose an SASE when requesting information.

CAMBRIDGE GLASS BOOKS FOR SALE

By National Cambridge Collectors, Inc.

- **Colors in Cambridge Glass ***
128 pages, 60 color plates, fully indexed
Hardbound with price guide. \$19.95
 - **1930-34 Cambridge Glass Company Catalog Reprint ***
250-page reprint of original catalog
Paperback with price guide. \$14.95
 - **1949-53 Cambridge Glass Company Catalog Reprint ***
300-page reprint of original catalog
Paperback with price guide. \$14.95
 - **1956-58 Cambridge Glass Company Catalog Reprint ***
164-page reprint of original catalog
Paperback \$6.95
- * For NCC members only, the above publications are available at a 10 percent discount.

By Bill and Phyllis Smith

- **Cambridge Glass 1927-1929**
66-page reprint of original catalog
Paperback w/identification guide. \$7.95

By Cambridge Buffs Study Group

- **Nearcut**
108-page reprint of 1910 Cambridge catalog
Paperback with price guide. \$9.95
- **Price Guide**
Updated price guide for Nearcut Catalog reprint (including postage). \$3.00

By Mark A. Nye

- **Cambridge Rose Point**
94 pages, fully indexed
Paperback with updated value guide. \$12.95
- **Value Guide**
Updated value guide for Rose Point book (including postage). \$5.00

By Mary, Lyle and Lynn Welker

- **Cambridge Glass Company**
120 pages of reprints from eight old catalogs
Paperback. \$10.00
- **Cambridge, Ohio Glass in Color II**
Spiralbound. \$5.95

By Harold and Judy Bennett

- **1903 Cambridge Glass Company Catalog Reprint**
106-page reprint of an original catalog
Paperback. \$7.50

Address your orders to:

Books
National Cambridge Collectors, Inc.
P.O. Box 416
Cambridge, OH 43725-0416
Please add postage and handling to your order (first book, \$2.00; each additional book, 50 cents). Ohio residents add 6½ percent state sales tax.

Dealer discounts available - please write!

Smokers' Items

by Mark A. Nye
Part V

The 1949 Cambridge catalog, the first issued since 1940, contained only two pages of smokers' items. The newest items on these pages were the Caprice 214, 215 and 216 nesting ash trays. Molds for the three were ordered during the fall of 1942 and made using wood models of the proposed ash trays. Introduced simultaneously with the Caprice 200 line of stemware, the set is pictured, along with the stemware, on a supplemental catalog page issued in 1943. At the time of their 1943 introduction, this ash tray set had flat tops. Recorded during the summer of 1945 was an order to change the molds so that the ash trays would have rounded tops. For some reason the 1949 catalog page continued to illustrate what may be the flat top version. Apparently the mold change took place since rounded top ash trays are in several collections. Both styles will be found in Crystal and Moonlight.

In a private collection is a "pink" C214 flat top ash tray. Surviving company records do not mention production of this ash tray in La Rosa or Dianthus Pink. In two other collections are Gold Krystol C214 ash trays, both have flat tops and one has the Alpine decoration. Again, there are no company records showing when these were made, but most likely it was before 1945.

Introduced in 1947, the Cascade line, containing three ash trays, numbers 214, 215 and 216, made its first catalog appearance in the 1949 Cambridge catalog. When inverted the No. 216 ash tray served as the base for the Cascade punch bowl. This piece was combined with the Cascade 479 21-inch plate to make up the 479/216 2-piece Sunday Evening or Buffet Supper Set.

Introduced in 1952, the Cambridge Square line contained two sizes of ash trays, 3½ and 6½ inch, and a cigarette urn. The cigarette urn is simply the individual sugar put to an alternate use. First made in Crystal, these items were later available in Ebon and Ebony. It is possible to find the cigarette urn, in both Crystal and Ebon, decorated with a gold encrusted cigarette. The small ash tray and the urn were sold separately and in boxed three piece sets.

While probably in production during early 1949, the 1712, 1713 and 1714 cigarette box and ashtray sets were not pictured in the 1949 catalog as originally issued. The orders for the molds to make the components, except the S.S. 35 bottom, were recorded in December 1944. They show the cigarette box and cover molds came from reworking the 616 cigarette box and cover molds. The 1711 ashtray was specifically designed to fit in the 1710 cigarette box top. These items did appear on catalog pages issued in August 1949 showing items available in, the then new colors of, Emerald and Mandarin Gold. Captioned as the 1712 bottom, cover and ashtray in a supplement to the 1949 catalog, the original mold orders referred to these pieces as the 1710 cigarette box and cover and the 1711 ash tray. The price list retained the designation 1711 for the ashtray as did a later catalog page.

The 1950 Cambridge price list offered the 1711 ash tray, the 1713 4-piece smoker set and the 1714 3-piece smoker set in Crystal, Emerald, Mandarin Gold and Ebony. In addition, the 1713 came in a Varitone Set. In this instance the box was in Moonlight, the cover in Crystal and the ash trays in Mandarin Gold. The 1712 6-piece stowaway set came in all Crystal, Crystal box and cover with four ash trays in Emerald or Mandarin Gold, or with two ash trays of each color. While not absolutely clear from the price list and catalog, it does appear the cover to the 1712 box was made only in Crystal.

Recorded in June 1949 was an order for the mold to produce a domed lid for the 1710 cigarette box. The entry in the log reads "P747 - cover for 1710 cigarette box. Domed like Caprice 208 cover." The September 1950 price list offered the P.747 cigarette box and cover in Crystal, plain or etched Rose Point, and in Ebony. Later this box became available in Ebon when that finish was introduced in early 1954.

Mixing and matching has always been, and continues to be, a means of producing "new" items. The Caprice 209 cigarette box makes use of this technique since it

Continued on page 13 - NYE



SMOKERS' ITEMS



P.731—6½ in. Star Ash Tray



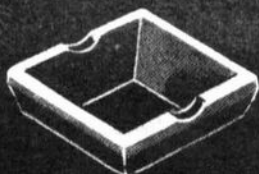
P.726—5 in. Star Ash Tray



1040—3 in.
Swan Ash Tray



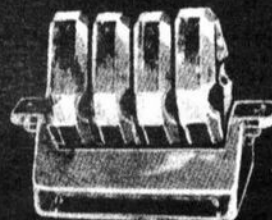
P.721—2½ in.
Ash Tray, Square



P.725—3½ in.
Ash Tray, Square



P.732—3½ in.
Ash Tray, Square



P.728—5 pc.
Ash Tray Set



C.214—3 in.
Ash Tray



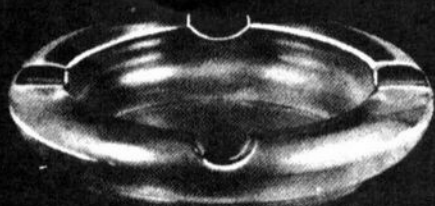
C.215—4 in.
Ash Tray



C.216—5 in.
Ash Tray



C. 214 215 216—3 pc.
Ash Tray Set



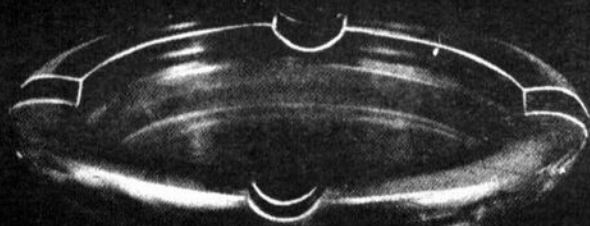
390—6 in. Ash Tray



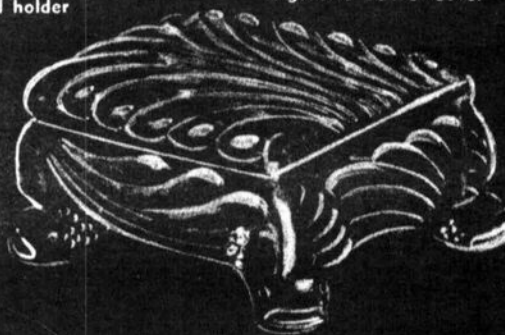
C.213—2¾ in. 3 Ftd.
Ash Tray w placecard holder



C.207—3½x2½ in.
Cigarette Box & Cover



391—6 in. Ash Tray



C.208—4½x3½ in. Cigarette Box & Cover



SMOKERS' ITEMS



Sea Shell 33—4 in. 3 Ftd.
Ash Tray



Sea Shell 34—4 in. 3 Ftd.
Ash Tray



P.733—3 in. Ash Tray



P.734—4 1/2 in. Ash Tray



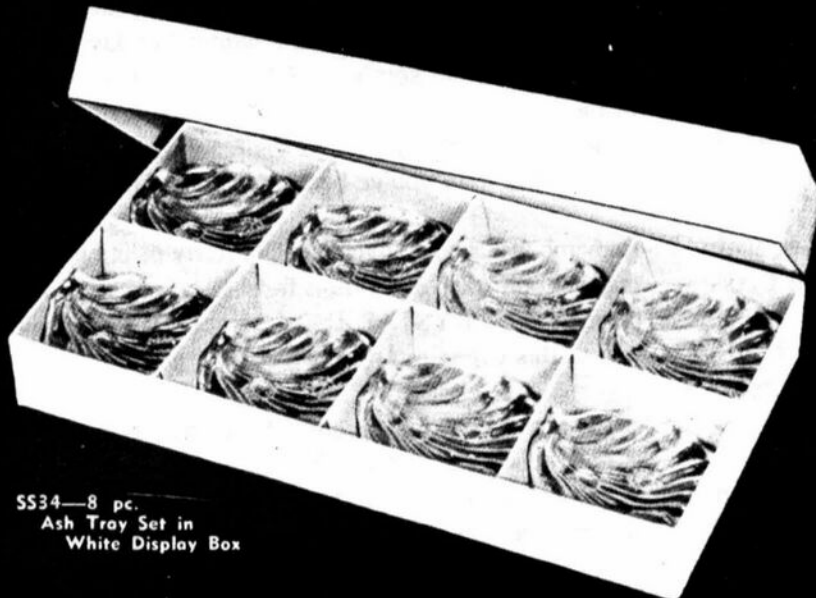
C.207 213—5 pc.
Cigarette Set in
White Display Box



P.735—6 in. Ash Tray



P.733 4 5—3 pc. Ash Tray Set



SS34—8 pc.
Ash Tray Set in
White Display Box



"Stackaway" Ash Tray Set

MUSEUM MOMENTS

by J. D. Hanes

As you know, from last month's CRYSTAL BALL, I did not have an article, due to the sudden passing of my dad, Doyle. Please see another note from me on page 13 of this issue.

Now that fall is here, we are having fewer visitors during the week but about the same, if not more, on the weekends. Attendance at the Museum is still ahead of last year. A final count of visitors will be in the December issue of the CRYSTAL BALL. One thing I can say, the advertising that we have done has paid off. We can all salute Cindy Arent, our Publicity Chairman, for the fine job she is doing.

At the Board of Directors meeting held on August 26, I was again appointed to be Chairman of the Museum Interior Committee. I am proud to serve in this position to help all of the members of the organization. All current members of the committee have agreed to serve another year also. We might add one or two more members to the committee, but that will be decided later.

Now, I have several exciting additions to the Museum Collection to report. The Acquisitions Committee purchased the following items:

a pair of Everglade #3, 6" 2-light candlesticks in Carmen;

#3011/40 10" Flower or Fruit Center, commonly known as the Flying Lady Bowl, in Carmen;

and, a pair of #3011 "Nude" stem candlesticks, with Carmen candle cup, Crystal stem and foot, with Crystal bobeches and prisms.

The following donations were received for the Museum Collection.

From Tarzan Deel, a #3400/1179 5-1/2" signed Bon Bon in Carmen; and a #3400/1181 6" signed plate in Carmen.

From Charles and Mary Alice Upton, a list of glass that Charles' parents were either buying or selling. He was not sure which, but it is from the early 1950s and

the price for one dozen Rose Point etched goblets was \$6.00!

From the Cambridge Cordials Study Group, a framed colored photograph of the group picture of the Former Employees of the Cambridge Glass Company from this year's Former Employees Reunion.

Donations received in Memory of Doyle Hanes were:

From Mary and Lynn Welker and Willard and Norma Kolb, a #432 8-1/2" "Ram's Head" bowl in Rubina.

From Mark Nye, a Stradivari Champagne in Crystal cut Symphony.

From Bill and Joann Hagerty, a set of four department store display signs, one each for Rose Point, Candlelight, Chantilly and Caprice.

We are very grateful for all these donations and for the Acquisitions Committee purchases. They all make great additions to the Museum collection.

As this year is coming to a close, remember that you only have until the end of October to visit the Museum this year. We will close for the winter Sunday, October 30. A fall trip to southeast Ohio is beautiful, with all of the trees in splendid color. Also, there are the many antique shops and malls to visit and, hopefully, find that certain item you've been searching for.

Remember that the November Quarterly meeting is coming up soon, the reservation form is on page 20 of this issue of the CRYSTAL BALL. I hope to see many of you at this event.

Also, remember that Auction Chairman Lynn Welker is now accepting lists of glass that you wish to donate or consign to the Annual Benefit Auction in March. He will accept lists until October 20. You can send your lists either directly to Lynn or to the NCC post office box. This is another way to help support your Museum.

Until next month, Happy Cambridge Hunting!

We Get Letters

Dear Sue:

In talking to some good friends, Mr. and Mrs. Larry Davis, they mentioned their collection of Cambridge glassware; whereupon, I told them of the crystal my husband and I were given as a wedding gift (picture enclosed).



We have the King Edward pattern in five sizes plus dessert plates (a dozen each). We are curious to find out the history and any information concerning our pattern.

Thank you in advance for any information as to history and current value of this pattern you can impart to us.

Norma Weiner
Ohio

Dear Norma:

King Edward is a lovely pattern, as classic today as the day it was conceived. The first reference that I could find to this engraving was in a January 1938 Rock Crystal Price List. This list indicated that King Edward was produced on 3101 line stemware. I am certain, from the number of this engraving pattern, #821, that it was introduced before 1938, as the price list had numbers well over 900.

In checking with other collectors, I found that very little is really known about this pattern. It is believed to have been a very popular cutting. King Edward was shown in the 1940 and the 1949-53 Cambridge catalogs on the 3700 stem that you have. The pattern continued to be produced by La Flo Cut Glass Company after the Cambridge plant closed. La Flo called the cutting "Aristocrat".

As to the name, here is my best guess. Edward VIII, King of Great Britain and Northern Ireland, reigned from January 20 to December 11, 1936, when he abdicated the throne. I presume that the cutting was intro-

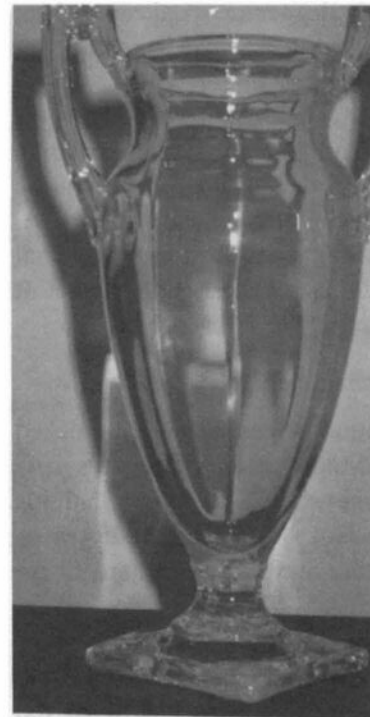
duced during his short reign and named for him. Incidentally, King George, rock crystal engraving #1027, was introduced after 1938 and probably named for his brother, George VI, who succeeded him on the throne.

You asked for a current value on this glassware. As a reminder to you and other members, it is the policy of National Cambridge Collectors to NOT provide values for glassware.

Sue

Dear Sue:

My mother-in-law has been in possession of two Topaz "friendship" vases for several years. A dealer has advised us that they are Cambridge glass. I've never seen anything similar in catalogs or shops.



They appear to resemble Tiffin pieces I've seen in the past. Can you shed any light?

Thank you for any information you can provide.

Jo Foglesong
California

Dear Jo:

Thank you for your question. This time I'm really stumped. I showed your picture to friends and the response was

overwhelming that it was NOT Cambridge. One did say that they thought it was US Glass. Unfortunately, not much help.

I searched through all of my material and came up blank.

Dear Readers - Please help!

Hopefully, your question, and my plea, will bring a response from someone more knowledgeable than I.

Sue

A. J. Bennett's Resourcefulness

by Bud Walker

[As told to me by Wib and Darlene Orme.]

During World War I while many of our young men were off to war in Europe, the Women's Christian Temperance Union along with an Ohio organization known as the Anti-Saloon League were able to influence Congress into proposing the 18th amendment to the Constitution of the United States.

This amendment if approved would no longer allow alcoholic beverages to be made or sold in the United States. It was ratified and went into effect January 16, 1920. This amendment would remain in effect until December 5, 1933.

If you wanted any alcoholic beverages during prohibition you had to know a bootlegger or speakeasy where it could be purchased. Without the proper contacts, it was impossible to obtain beer or liquor.

My reason for providing this background information is to help in understanding the problems prohibition caused for those who enjoyed alcoholic beverages. A. J. Bennett was one of those who enjoyed an occasional drink for himself and his guests. The liquor cabinet at his summer home in Ventnor, New Jersey was always well stocked.

On one occasion, the routine of having a well-stocked liquor cabinet changed. Much to Mr. Bennett's surprise, upon arriving at the shore, he found that his liquor cabinet was bare. Not being a well-known or full-time resident of Ventnor it was rather hard to restock the liquor cabinet.

Knowing that his son-in-law, W. L. Orme, and his sales organization had attended a glass show at the convention hall in Atlantic City, it was not hard to figure that they had partied and cleaned out his cabinet. Being a man of action, A. J. took the necessary measures to insure that this would never happen again.

Unbeknown to anyone, A. J. had carpenters build a room on the third floor. This room had a vault-like door that was equipped with a tumbler type lock. This was the new liquor storage room. Only one person had the combination and that person was Mr. Bennett.

It is not hard to imagine the surprise when the next impromptu party went to raid the liquor cabinet. A. J. had solved that problem, as he had solved problems all

of his adult life.

As we look back at the history of the Cambridge Glass Company, we see that Mr. Bennett was a man of action. He faced his problems head on and with uncanny skill solved them. When the plant ran short of gas, he had his men install a line to a commercial producer. To insure an adequate supply of gas, he drilled his own well. It produced more than the plant required. During one fuel crisis, he purchased a coal mine and a coal gasification plant. On one trip to England, he had two identical homes built for his sisters. When questioned about this, his reply was, one will never be able to say that her sister got more than she.

Study Club News

Study Group #16 - Mid-Atlantic "Elegant Glass Collectors"

Sunday, August 28, the Earussis, Walkers and Chamberlains met at the Walkers' house, and planned our next several meetings.

As announced, at the business meeting at the Convention, we plan to meet at Renningers' on Sunday, September 25, 1994, for the Extravaganza. We will meet at 7:00 a.m. at the refreshment stand behind Renningers. From there we will go to the outside dealer stands behind the Black Angus. We plan to meet at Shupp's Grove at noon at the Refreshment Stand, either buying there or bringing a packed lunch. If 7:00 a.m. is too early, then perhaps someone could catch up with us later. If it is raining heavily, we would and should cancel.

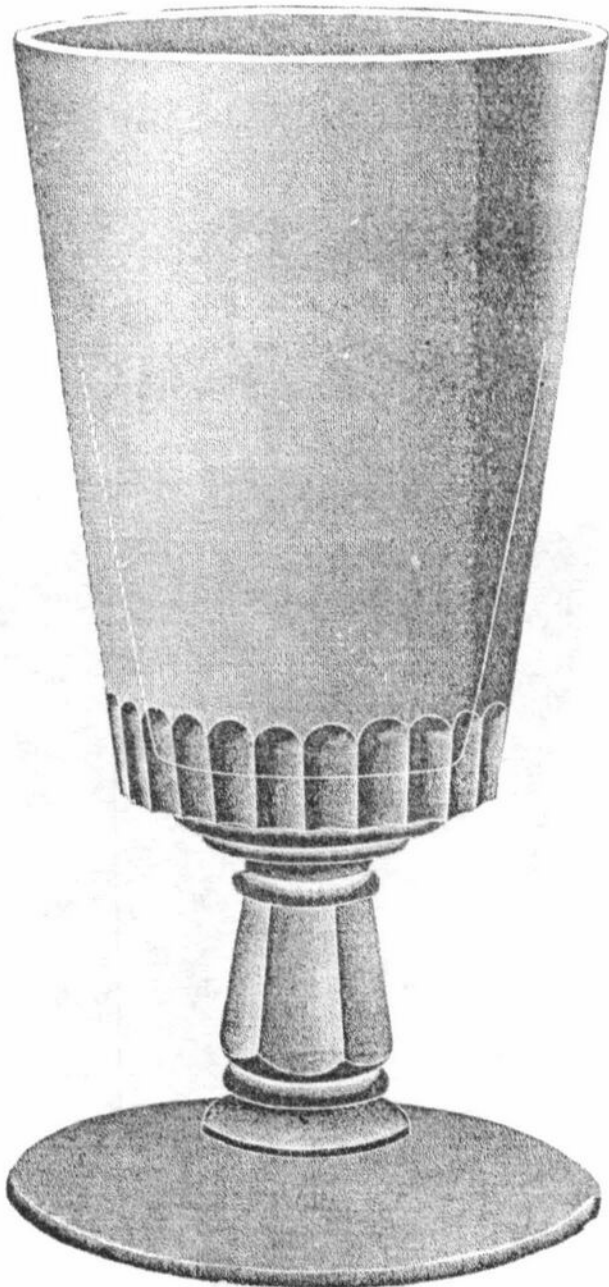
Our meeting for October will be held on the 16th, at the home of Pam and Bill Earussi - 889 Stonybrook Lane, Lansdale, PA 19446. Their phone number is (215) 855-5423, and we would welcome visitors in the area to get in touch and attend. We will meet at 1:00 p.m. The subject for this meeting is the Opaque Colors, and Bud Walker will speak on them. We will have Show and Tell, as well as any information on reproductions that may be available. Following the meeting, we will be having a Covered Dish Supper.

Our meeting for November will be at the Harrisburg Antique Show. I believe the Sunday date is the 20th, and we will meet when the show opens at 11:00 a.m.

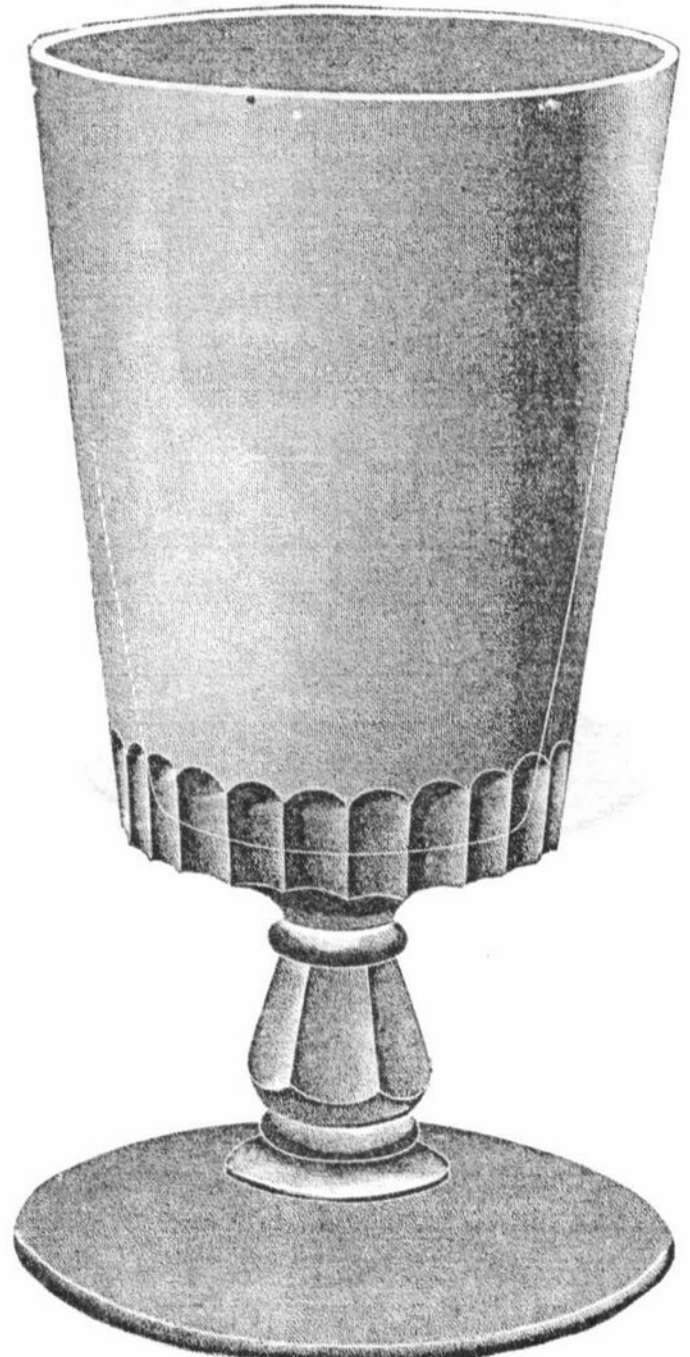
Continued on page 13 - **STUDY CLUB**

Weiss Beers, Cup Foot.

SCALE, FULL SIZE



No. 1046 18 ounce Weiss Beer
Packed 5 $\frac{1}{2}$ dozen in a barrel.

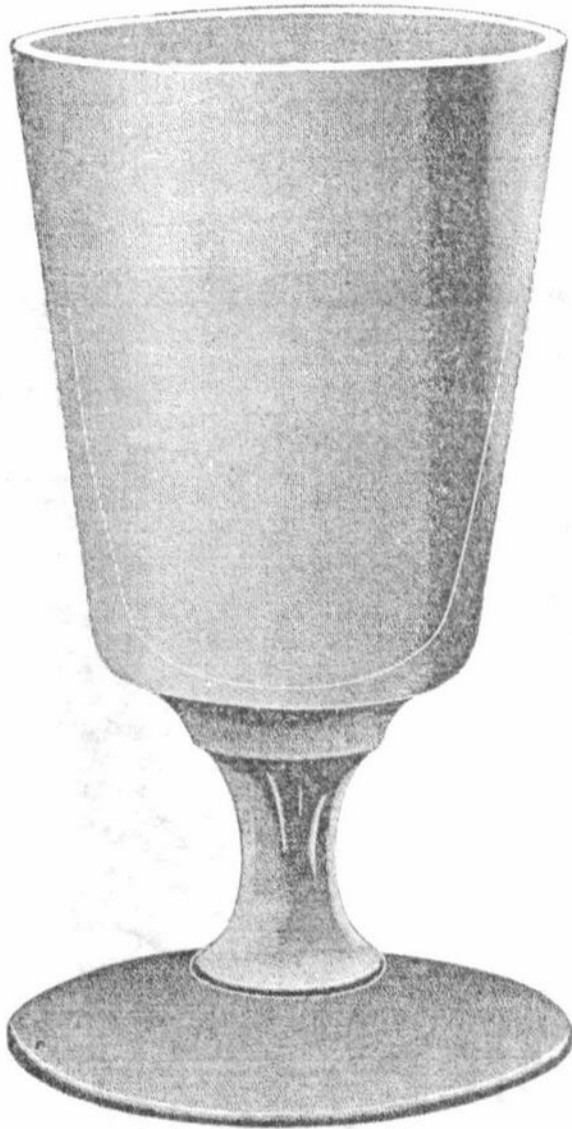


No. 1047 24 ounce Weiss Beer.
Packed 4 dozen in a barrel.

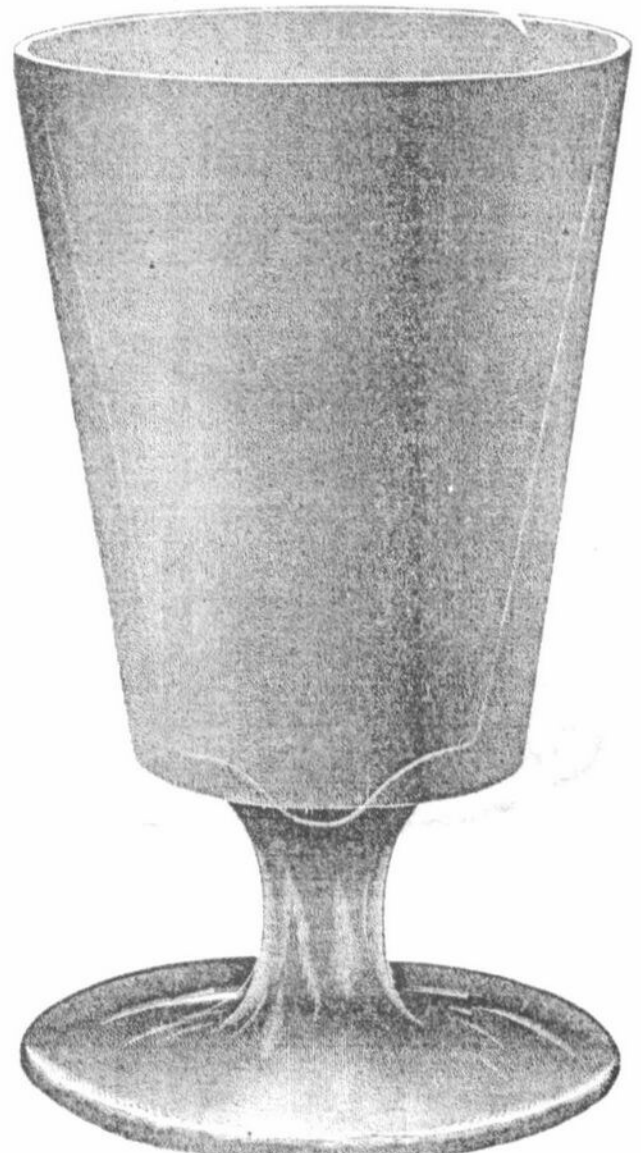
Weiss Beers, Cup Foot.

133

SCALE: FULL SIZE



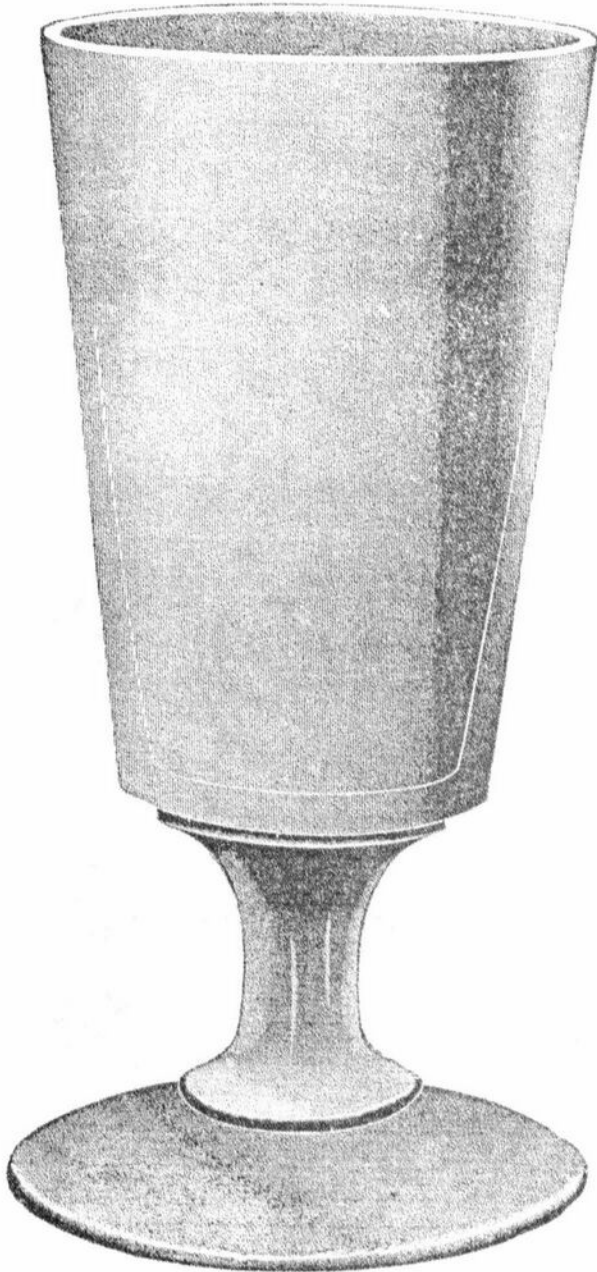
No. 108 14 ounce Weiss Beer
Packed 6 dozen in a barrel.



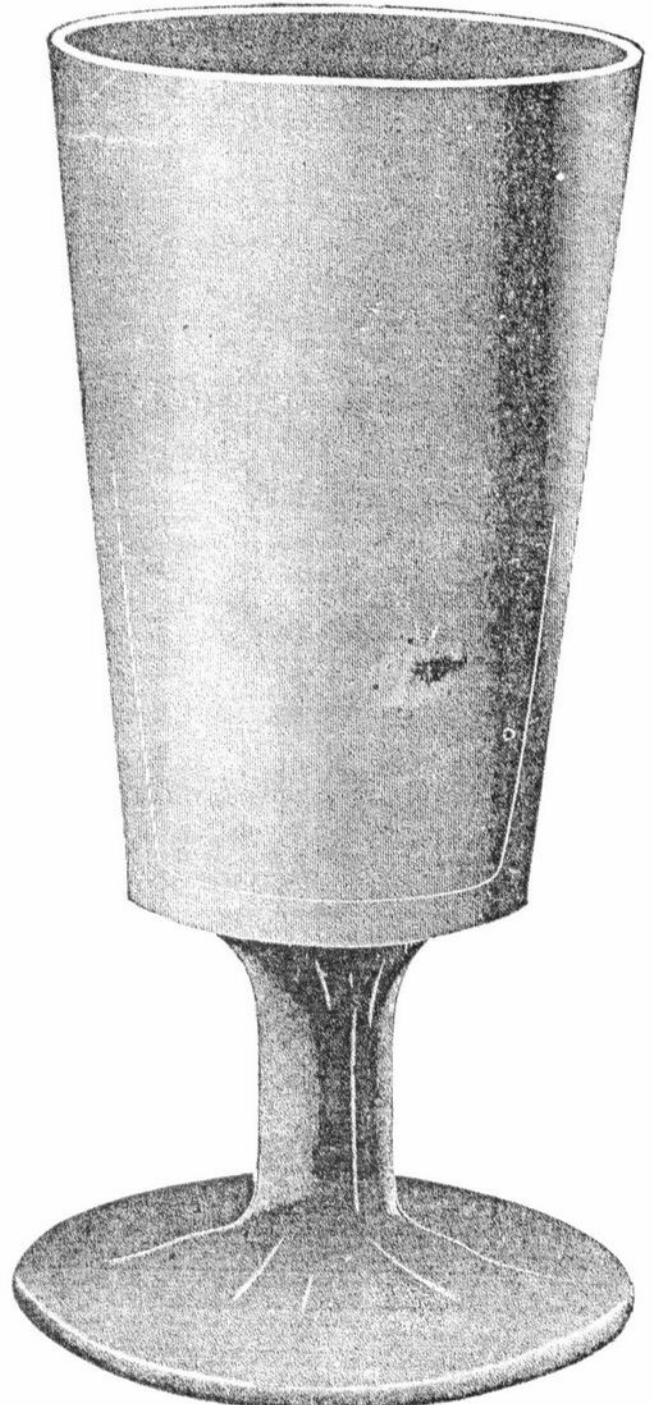
No. 109 18 ounce Weiss Beer
Packed 3 1/2 dozen in a barrel.

Weiss Beers, Cup Foot.

SCALE, FULL SIZE



No. 1050 16½ ounce Weiss Beer
Packed 9 dozen in a barrel.

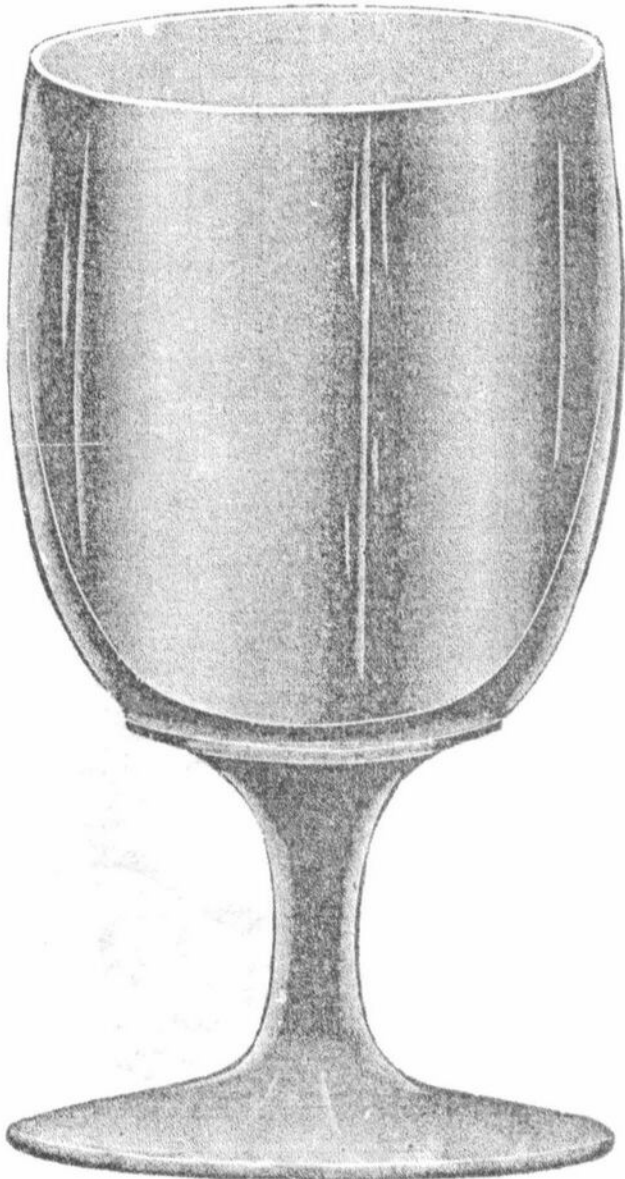


No. 1051 30 ounce Weiss Beer
Packed 4 dozen in a barrel.

Weiss Beers, Cup Foot.

135

SCALE, FULL SIZE



No. 1052 30½ ounce Weiss Beer
Packed 5 dozen in a barrel.



No. 1053 22½ ounce Weiss Beer.
Packed 4½ dozen in a barrel.

STUDY CLUB - continued from page 8

At this time, I do not have the date for the Wheaton Museum Antique Show in Millville, New Jersey. In past years, it was in January, but last year it was held the first weekend in February.

Submitted by,
Pam Earussi

NYE - continued from page 3

is composed of the 1710 cigarette box bottom and the top from the Caprice 208 cigarette box and cover.

Another smokers' item new in the early 1950s is the 1715 4-piece stackaway ash tray set. Its mold order was recorded in March 1951, but the date when the set became available in the retail market is not known. Sold in three different ways, the 1715 ash tray came as a 4-piece stackaway set, as a single ash tray, or when turned upside down, as a low, single light candleholder.

Contained in the Cambridge Milk Glass line are three smokers' items. These are the W101 Cigarette box & cover (also known as Caprice 208), the W102 Individual Ash Tray with placecard holder (also known as Caprice 213), and W103 4-inch ash tray (also known as Shell 33).

In the Ebon line are four smokers' items; these being the P747 cigarette box and the three items from the Square line. These are discussed in preceding paragraphs.

A THANK YOU

by J. D. Hanes

This is probably the most difficult thing that I have ever written for the CRYSTAL BALL. My dad's (Doyle Hanes) passing was very sudden and unexpected. But the members of this organization were absolutely wonderful, and I would like to say a big THANK YOU to all of you.

I especially want to thank the members of the Museum Interior Committee, who made sure that the Museum was open, and for their assistance at my home. I've said before that the people on this committee are great, and they proved it once again. Also, special thanks to the members of the Board of Directors, and the Cam-

bridge Cordials Study Group, for all of their assistance.

I am not listing names in this as, when you do, you can get in trouble by omitting someone. I want to thank all of you for your phone calls, cards and letters, donations, and attending the calling hours and funeral. Dad was very proud to be a member of this organization and took great pleasure in helping the organization by working in the storage building, taking care of the museum grounds, and being the "general handyman." Convention and Auction were always his favorite times, as he could visit with all of you, and again, help out wherever and whenever needed.

My minister, the Rev. Dr. Terry Litton, had a wonderful funeral meditation on life being like a fine piece of handmade glass. It was very moving and appropriate. I want to share with you a poem that I think is appropriate and used by him at dad's funeral. It is the lyrics to hymn #707 from The United Methodist Hymnal. This may appear in other denominations' hymnals, but I am not sure.

Hymn of Promise, by Natalie Sleeth.

In the bulb there is a flower;
In the seed and apple tree;
In cocoons, a hidden promise: butterflies
will soon be free!
In the cold and snow of winter there's a
spring that waits to be,
Unrevealed until its season, something God
alone can see.

There's a song in every silence, seeking
word and melody;
There's a dawn in every darkness, bringing
hope to you and me.
From the past will come the future;
What it holds, a mystery,
Unrevealed until its season, something God
alone can see.

In our end is our beginning;
In our time, infinity;
In our doubt there is believing;
In our life, eternity.
In our death, a resurrection;
At the last, a victory,
Unrevealed until its season, something God
alone can see.

Again many thanks for all of your kindness. May God bless all of you for your aid to me during this time.

AUCTION 95

March 4, 1995

Consignments & Donations Needed

by Lynn Welker, Auction Chairman

If you have never participated in our Annual Auction, perhaps this is the year for you to do so.

Consignment lists are being accepted September 1, 1994, through October 20, 1994. DO NOT SEND THE GLASS, please send lists only at this time.

Forward lists to:

LYNN WELKER
2 EAST MAIN STREET
NEW CONCORD, OH 43762

Your list will be reviewed by the Auction Committee. Accepted items will be noted and the list returned to you about November 1, 1994. All glass must be received by the committee by December 1, 1994. You may bring your glass to the November Quarterly Meeting. The consignment fee will be 20% as in previous years.

You can also make an outright donation of a piece or pieces of Cambridge glass or related paper material. When the item is auctioned, 100% of the price realized goes to the Museum Fund. Our Auctioneer doesn't even include these items in his fee. Of course, your donation is 100% tax deductible by you.

Proceeds from the commission charged benefit the Museum Fund.

The Auction will be held Saturday, March 4, 1995, at the Pritchard Laughlin Civic Center in Cambridge, Ohio. This was the location for the Auction in 1994 and the site of the 1992, 1993 and 1994 Conventions. Even if you cannot consign or donate glass, please plan now to attend as a buyer. Plans are underway to improve the lunch items available.

Thank you for your support.

If you have any questions, please call Lynn Welker at (614)826-7414 or J. D. Hanes at (614)432-6794.

President's Message

Here in Ohio, the weather is beautiful as fall approaches. The layered look is the required clothing, as the furnace could be on in the morning and the air-conditioning in the afternoon.

The picnic was held in August. Food was plentiful and, as usual, very good. It was a small group. Thanks to those of you who attended. Sorry to have missed those of you who could not be there.

It was the job of the Board to locate a club member who would be willing to fill the vacancy on the Board of Directors that was created by the death of Doyle Hanes. I am pleased to announce that Bill Hagerty has agreed to fill the position. The entire Board of Directors is pleased that he agreed to do so, as we feel he will be a good addition to the Board. Welcome, Bill!

Please plan to attend our November meeting, which will be the first Saturday in November. Information appears on page 20 of this newsletter. Give your sympathies to Mary Beth Hackett at the November meeting, as she turns 40 that week.

You have from the time you read this article to October 20 to submit your auction list to Lynn Welker. Further details can be found on this page. Please follow the instructions carefully.



IN MEMORIAM

William F. "Bill" Adt

Word was received that Bill Adt of Lilburn, Georgia died suddenly in early September. This information was received third-hand so details are sketchy.

Our deepest sympathy is expressed to his wife Barbara, family and friends.

CECIL TAYLOR

730 LION'S GATE DRIVE
OXNARD, CA.93030
805 984 4986

3011 NUDE STEMS

Cobalt Banquet Goblet	\$ 450
Cobalt tops 9" candlesticks	\$1050
Cobalt Ivy Ball	\$ 325
Cobalt Ash Tray	\$ 395

Red cigarette box	\$ 550
Red ash tray (2)	ea \$ 325
Red table goblets (4)	ea \$ 265
Red claret 5" 4½ oz (2)	ea \$ 145
Red blown covered candy	\$2500
Red compote cupped	\$ 195

Crystal flared compote	\$ 175
Crystal table goblets (3)	ea \$ 195
Crystal ivy ball	\$ 195

Crown Tuscan ivy ball	\$ 200
Crown Tuscan candlestick	\$ 195
Crown Tuscan shell compote	\$ 225
Crown Tuscan shell compote Charleton decoration	\$ 295

Amber ivy ball	\$ 225
Amber 4" mint dish	\$ 450
Smoked claret 5" stem (2)	\$ 250
Black claret (6)	ea \$ 50
Crystal frosted candlestick	\$ 225
Silver overlay frosted compote	\$1200
Rock crystal saucer champagne	\$ 750
Forest Green covered sweetmeat	\$ 950
Windsor blue flying nude bowl	\$ 795

Crystal swan punch cups (12)	\$ 395
Crystal Everglade 1209 stick	\$ 65
Red Everglade double sticks	pr \$ 795
Cobalt 3" swan signed	\$ 325

Amber 10" swan signed w/frog	\$ 550
Moonlight blue 3 pc set frosted double candlesticks #647 with 15" Everglade bowl with indians and buffalos	\$ 395

YELLOW APPLE BLOSSOM

3400/67 12" relish server	\$ 55
3400/10 11" hdl sandwich tray gold decoration	\$ 55
3400/2 12" bowl	\$ 65
3400/9 7" ftd candy/cover	\$ 145
3400/15 4" compote (3)	ea \$ 35
3400/1186 12" sandwich plate	\$ 65
3400/68 creamer/sugar	\$ 55
3400/54 cup/saucer (6)	ea \$ 39
3400/55 cream soup/liner (6)	ea \$ 55
3400/56 5½" fruit bowl (6)	ea \$ 28
3400/53 6" cereal bowl (2)	ea \$ 45
3400/8 11½" sandwich plate	\$ 45
3400/63 9½" dinner plate (6)	ea \$ 95
3400/59 9" pickle tray	\$ 45
3400/851 ice bucket	\$ 85
3400 sauce boat/liner	\$ 155
3400/61 7½" tea plate (13)	ea \$ 16
3400/57 11½" platter	\$ 95
862 4 part relish	\$ 75
3400/11 2 pc set no ladle	\$ 60
3400 cheese compote	\$ 40

3130 6 oz sherbet tall (6)	ea \$ 25
3130 12 oz ftd tumbler (5)	ea \$ 45
3130 5 oz ftd tumbler (2)	ea \$ 35
3130 8 oz goblet (7)	\$ 45
3130 dinner wines (5)	\$ 50
3130 3 oz cocktails (4)	\$ 35
3130 6 oz low sherbets (6)	\$ 20

UPS EXTRA VISA AND MASTER CARD ACCEPTED

FINAL CLOSEOUT SALE

WATKINS CAMBRIDGE GLASS SHOP

1429 Marquand Avenue
Cambridge, Ohio 43725

CALL: (614) 432-4460 (SATURDAYS)

9:00 - 3:00 p.m. EASTERN

OR

(614) 439-3066 (EVENINGS) EASTERN

BETWEEN 7:00 - 10:00 p.m.

LANA WATKINS

OWNER

WATKINS CAMBRIDGE GLASS SHOP will officially close December 31, 1994. After 27 years of buying and selling Cambridge Glass and owning my own shop, other family and business interests will take too much personal time to continue my shop. I want to thank all of my customers for their patronage and friendships. To my glass buddies (associates), I will be continuing my love of Cambridge Glass through the expansion of my personal collection.

I have beautiful pieces of Cambridge Glass at tremendous savings. Below is a list of Cambridge Glass patterns and colors available, but not necessarily limited to, write or call me:

PATTERNS

Crystal Rosepoint
Crystal Diane
Crystal Wildflower
Crystal Blossom Time
Crystal Daffodil
Crystal Chantilly
Crystal Candlelight
Crystal Valencia
Crystal Minerva
Crystal Marjorie
Gold Krystol Apple Blossom

COLORS

Cobalt Blue
Red Carmen
Purple Amethyst
Pink Crown Tuscan
HP Crown Tuscan
Emerald Green
Heatherbloom (Sticks only)
Moonlight Blue

Amber
Jade
Smoke
Blue Azurite
Pinks
Farber Bros.
Black Ebony

CRYSTAL

Caprice
Cascade Waters, Juices, Cov. Candy
#1358 Duo Caprice Candelabums
Pristine
Square
Martha Blank
(2) Near Cut Feather
(2) #2579 Near Cut
(1) Near Cut Marjorie
(2) King Edward
Misc. Cambridge Crystal
Odds & Ends of Cambridge
Collectibles
(8) 5 Ft. Showcases (Lighted)

**** SHIPPING EXTRA ****

The DAZE Inc.

SPECIAL OFFER
to NCC friends
\$2.00 OFF
the 1 year subscription price
when on this form or copy of it

The Original National monthly newspaper dedicated to the buying, selling and collecting of colored glassware and china including Depression Glass and the Elegant Glass (Cambridge, Heisey, Fostoria, etc.) We educate and inform you each month with feature articles by top notch columnists, readers "finds", club happenings, show news and a multitude of ads. Find those missing pieces to your 30s, 40s, or 50s pattern. Can't identify it? Perhaps we can help "keep up with what's happening" with a subscription to the DAZE. Buy, sell or trade from the convenience of your easy chair.

Name _____

Street _____

City _____

State _____ Zip _____

|| 1 year \$21.00 || 2 years \$40.00 || \$2.00 Single Copy

Exp. Date _____ Card No. _____

Signature _____

Orders to:

The Daze, Inc., Box 57, Otisville, MI 48463

Please allow 30 days for your first issue - Canadian Subscribers, add \$1.00 per year and subscribe by charge card only! This Special Offer may not be combined with any other special offer.

Offer Expires December 31, 1994

NATIONAL CAMBRIDGE COLLECTORS, INC.

PRESENTS

Caprice

Just Released. Orders are now being taken. List price is \$19.95 plus \$2.00 for shipping and handling. NCC members may deduct \$2.00 from the book price.

Address your orders to:

National Cambridge Collectors, Inc.
P.O. Box 416
Cambridge, OH 43725-0416

(May be combined with other books order from page 2)

JIM KENNON UPS EXTRA
10131 CASEY DRIVE
NEW PORT RICHEY, FLORIDA 34654 813-869-7013

SWAN EBONY 10-1/2" SIGNED		285.00
SWAN EBONY 3" SIGNED (11)	EA	55.00
SWAN CROWN TUSCAN 3"		40.00
COLOGNE 1 OZ LIGHT EMERALD BEEHIVE STOPPER		65.00
GEORGIAN TUMBLER 9 OZ CARMEN (8)	EA	12.50
1301 VASE 10-1/4" ROYAL BLUE/CRYSTAL FOOT		60.00
CAPRICE DIVIDED NUT DISH CRYSTAL		26.00
#3500 ROSEPOINT 5 OZ FTD TUMB. (5)	EA	32.50
#3500 ROSEPOINT TALL SHERBET (4)		25.00
#3500/161 ROSEPOINT 8" 2 HDLD FTD PLATE GOLD ENCR		55.00
#3500/57 WILDFLOWER 3 PART CANDY BOX W/COVER		80.00
BLOCK OPTIC VASE 10-1/2" RUBINA		175.00
1/2 LB. COVERED CANDY 10" AZURITE		75.00
GADROON IND. SUGAR/CREAMER ROYAL BLUE		60.00
EVERGLADE 5" VASE FROSTED JADE GREEN		60.00
DRAPED LADY 8-1/2" LIGHT EMERALD		125.00
DRAPED LADY 8-1/2" GOLD KRYSTOL		195.00
BASHFUL CHARLOTTE 11-1/2"		150.00
DOLPHIN CANDLESTICKS MT. VERNON AMBER PR		145.00
TALLY HO PUNCH CUPS CRYSTAL W/CARMEN HANDLE (8)	EA	11.00
HEIRLOOM W63 INDIV. SUGAR/CREAMER MILK GLASS		40.00
P728 5 PC. ASH TRAY SET CRYSTAL/MOONLIGHT BLUE/GOLD KRYSTOL		40.00
YARDLEY JAR 2-3/4"		30.00
#1525 SQUARE OPEN SALT DIPS (4)	EA	8.00
STAR CANDLESTICKS 4" MOONLIGHT BLUE	PR	38.00
MOUNT VERNON 1 OZ. FTD CORDIAL (4)	EA	12.00

Classified

WANTED TO BUY: Hard to find Rose Point, Rose Point #3106 stems, Nude stems and novelty items. Write price and description. **Nancy & Jim Finley**, 711 West Broadway, Sedalia, MO 65301. Phone: (816) 826-5032 or 827-0101.

GLASS EPERGNES WANTED: New York City epergne collector seeking epergnes of any origin. Particularly desirous of unusual shapes, colors, those with hanging baskets or tulips, and any which are of definite American manufacture. Send photos only: **Ann Aikens**, 810 7th Ave, 36th floor, New York, NY 10019. Phone (212) 830-2072. Fax (212) 830-5199.

WANTED: Portia #3130 stems and other Portia pieces. **Susan Alt**, 2969 Snowflake Way, Boise, ID 83706. Phone (208) 343-6526.

WANTED: Advertisers interested in good results to place ads in this space. **National Cambridge Collectors, Inc.** PO Box 416, Cambridge, OH 43725.

ISAACS ANTIQUES



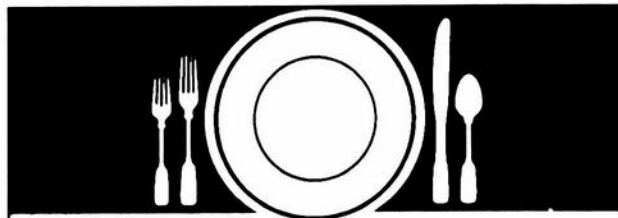
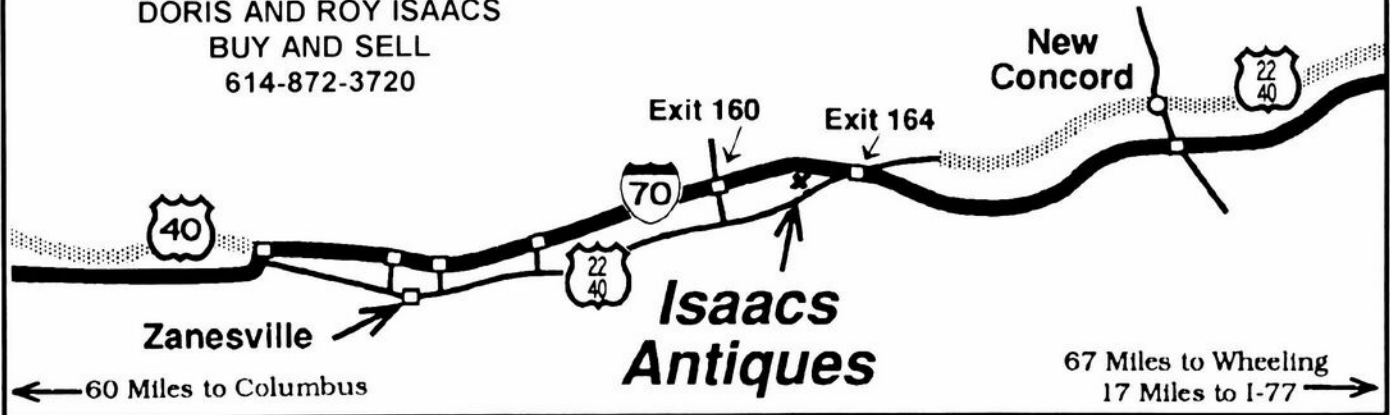
WE FEATURE GLASSWARE OF: CAMBRIDGE,
HEISEY, FENTON & FOSTORIA
Plus Art Pottery & a General Line of Antiques

DORIS AND ROY ISAACS
BUY AND SELL
614-872-3720

7525 East Pike
Norwich, Ohio 43767
614-872-3720

In East Pike Antique Complex - Rt. 40,
One Mile West of I-70 Norwich Exit #164

Hours 10 - 5:30 Mon. - Sat.
12 - 5:30 Sun.
Open Year Round



Are You At Your Wits End?

Can't find the missing pieces
to fill out your pattern?

As the world's largest supplier
of discontinued china, crystal and
flatware, Replacements, Ltd. has
48,000 patterns and 1.5 million pieces.

So don't let it get to you.
Call us or visit our showroom.
Chances are pretty good
we can help you out.

REPLACEMENTS, LTD.

Call 1-800-562-4462 or FAX (910) 697-3100, or write:
1089 Knox Road • PO Box 26029, Dept CB
Greensboro, NC 27420

OVER 6800 CAMBRIDGE PIECES

WE CLEAN CLOUDY GLASS!

** SATISFACTION GUARANTEED **

YES, IT IS TRUE THAT WE REALLY CAN RESTORE THE INTERIOR
OF YOUR CRUET, VASE, DECANTER AND MOST OTHER
INTERNALLY ETCHED ITEMS BACK TO NEAR ORIGINAL
CONDITION!

WE DO NOT OIL, WAX OR COVER UP THE SICKNESS IN ANY WAY!
WE ACTUALLY REMOVE IT.

NO ITEMS ARE TOO SICK TO CLEAN! IF WE CANNOT CLEAN YOUR
ITEM TO MEET YOUR SATISFACTION, THE CLEANING IS FREE!

WE ARE SO CONFIDENT IN OUR SERVICE THAT WE ASK THAT
YOU SEND NO MONEY. WHEN WE RETURN YOUR ITEM A BILL
WILL BE ENCLOSED FOR THE POSTAGE & CLEANING. IF YOU ARE
HAPPY, PLEASE SEND PAYMENT; IF NOT, RETURN THE BILL
MARKED "NOT SATISFIED".

PLEASE ALLOW 6-8 WEEKS FOR REDELIVERY OF MOST ITEMS. ALL
GLASS IS HANDLED AND CLEANED AT YOUR RISK. SOME VERY
CLOUDY ITEMS MAY TAKE SEVERAL ADDITIONAL WEEKS.

CRUET	\$20.00	COCKTAIL SHAKER	\$30.00
COLOGNE	\$20.00	SALT SHAKER (SINGLE)	\$15.00
WATER BOTTLE	\$30.00	SALT SHAKER (PAIR)	\$25.00
DECANTER	\$30.00	CRUSHED FRUIT JAR	\$30.00
VASES (UNDER 12 IN.)	\$25.00	LAVENDER JAR	\$20-30.00

ALL OTHERS WRITE FOR QUOTE

SHIP TO: CARLISLE & ASSOCIATES
28220 LAMONG ROAD, DEPT. C
SHERIDAN IN 46069
(317) 758-5767 AFTER 6:00 P.M.

DEALERS



DIRECTORY

NOTE: When writing to the Dealers listed here, please enclose a SASE!

<p>DAUGHERTY'S ANTIQUES Jerry and Shirley Antiques and Collectibles * Mostly Glass Shows & Mail Orders 2515 Cheshire No. 402-423-7426 Evenings Lincoln NE 68512</p>	<p>"HAPPINESS IS" Buddy and Kathy Stultz 3106 Warren Court, Glen Allen, VA 23060 804-672-8102 Specializing in American Made Glass We Buy & Sell, Shows & Mail Order</p>	<p>THE MUTED SWAN ANTIQUES 5486 Peachtree Rd. Chamblee, GA 30341 Heart of Chamblee Antique Row Specializing in Cambridge, Heisey and Fostoria Bill & Pat Miller 404-451-7620</p>
<p>Milbra's Crystal Buy & Sell Replacement and Matching <i>Specializing in Cambridge</i> Milbra Long (817) 645-6066 <i>Fostoria</i> Emily Seate (817) 294-9837 <i>Heisey</i> PO Box 363, Rio Vista, TX 76093 <i>and others</i></p>	<p>WATKINS (Fine Quality) CAMBRIDGE GLASS SHOP 1429 Marquand Ave. (Corner of Woodlawn) Cambridge, OH 614-432-4460 Lana Watkins</p>	<p>ARMORY ANTIQUES 168 West Main Street Plain City, OH 43064 QUALITY THINGS Cambridge, Heisey, China, Silver, Furniture Mon-Sat 10-5 VISA/MC 614-873-4890</p>
<p>THE GLASS URN 456 West Main Street, Suite G Mesa, AZ 85201 602-833-2702 Mail Order Shows Open Shop CAMBRIDGE, FOSTORIA, HEISEY, ETC.</p>	<p>ANTIQUES ON THE MALL SPECIALIZING IN CAMBRIDGE GLASS Bogart's - Bldg #3 - Norwich, OH Virginia Bennett 614-432-4483 64183 Warne Drive, Cambridge, OH 43725</p>	<p>GATEWAY ANTIQUE MALL, INC. JUST NW OF MINNEAPOLIS-ST PAUL, MN Next to Super 8 on Rogers, MN (I-94/101 Intersection) 85 Dealers 7 Days, 10-6 612-428-8286 ELAINE STORCK, DIRECTOR</p>
<p>ETTELMAN'S DISCONTINUED CHINA & CRYSTAL Cambridge a Speciality P.O.Box 6491-CB Corpus Christi TX 78466 Phone 512-888-8391 Include S.A.S.E.</p>	<p>D & D ANTIQUES Columbus, Ohio Dick Sliko SHOWS ONLY</p>	<p>RONI SIONAKIDES 6565 W. Herbison Rd. DeWitt, MI 48820 517-669-5981 Fostoria, Tiffin, Duncan, Cambridge</p>
<p>THE GLASS CUPBOARD P. O. Box 652 West End, North Carolina 27376 Marcia Ellis Cambridge, Duncan, Heisey 910-673-2884 Shows, Mail Order</p>	<p>JUDY'S ANTIQUES Judy Bennett 422 S. Ninth Street (Corner of Jefferson) Cambridge, Ohio 43725 BUYING Ph.614-432-5855 SELLING CAMBRIDGE GLASS MY SPECIALTY</p>	<p>MCKENZIE'S ANTIQUES & COLLECTIBLES 14700 Detroit Avenue Lakewood, Ohio 44107 (216) 521-2652 (216) 221-9862 (216) 348-3127</p>
<p>ELEGANT GLASSWARE Barbara & Cindy Brock Rt. 1, Box 66AC, Callands, VA 24530 804-724-6762 Cambridge - Heisey - Duncan - Fostoria</p>	<p>GREEN ACRES FARM 2678 Hazelton Etna Rd., Pataskala, OH 43062 (State Route 310 North) Sat & Sun 1-7 PM 614-927-1882 Antiques, Crystal Glass and Collectibles</p>	<p>CRYSTAL LADY 1817 Vinton St., Omaha, NE 68108 Joann D. Hagerty Bus. 402-341-0643 Res. 402-391-6730 Specializing in Elegant Glass & Collectibles</p>
<p>ASK Specializing in Cambridge. Wide variety. Booth #14 in the Antique Mall of Boswell 90 Miles south Chicago, right on U.S. 41. 7 days a week 10-5, except Sun. 12-5 (317) 869-5525</p>	<p>FLORENCE SOLITO 54 Old Stafford Rd. Tolland CT 06084 Stock All Elegant Glassware Mail Order Since 1978 Send Wants 203-872-3294 Satisfaction Guaranteed</p>	<p>YOU CAN ADVERTISE YOUR ANTIQUE SHOP HERE!</p>
<p>MICHAEL KRUMME Cambridge * Heisey * Fostoria * Duncan Miller * Paden City New Martinsville * Fenton * Tiffin * Imperial * Morgantown I search - Send detailed want list - all are kept on file PO Box 5542 Santa Monica, CA 90409</p>	<p>REMEMBRANCES 7597 Daphne Dr., No. Syracuse NY 13212 Shirley S. Ladouceur 315-458-5297 ANTIQUES and COLLECTIBLES MAIL ORDER SHOWS APPOINTMENTS</p>	<p>MARGARET LANE ANTIQUES 2 E. Main St., New Concord, OH 43762 Lynn Welker 614-826-7414 Cambridge Glass Matching Service Hours Mon-Fri 10-12AM, 1-5PM or by Appointment</p>
<p>GLASS RESTORATION BRILLIANT DON & LYNNE CRYSTAL WORMLAND ELEGANT MT. CLEMENS, MICH DEPRESSION 810-468-3519</p>	<p>YOU CAN ADVERTISE YOUR ANTIQUE SHOP HERE!</p>	<p>HELEN & JIM KENNON Heisey, Cambridge, Fostoria, Duncan, Imperial, Fenton, Tiffin P.O. Box 114, Brookville, OH 45309 PH: 513-833-5406 SHOWS ONLY</p>

National Cambridge Collectors, Inc. November Quarterly Meeting

Saturday, November 5, 1994

COCKTAILS - Cash Bar: 6:00 p.m.

DINNER: 6:30 p.m.

QUARTERLY MEETING: 7:30 p.m.

PROGRAM TO FOLLOW MEETING. TOPIC: TO BE ANNOUNCED

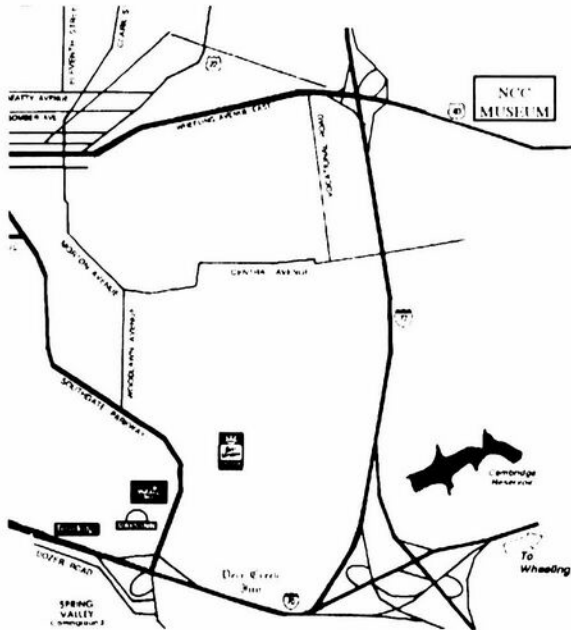
BRING YOUR ITEMS FOR THE "SHOW & TELL" SESSION

LOCATED AT: THE COVE
STATE ROUTE 209 AND I-70 CAMBRIDGE
(ADJACENT TO THE DEER CREEK MOTEL)

BUFFET DINNER CONSISTING OF: GARDEN SALAD; CHICKEN; SWISS STEAK; CLAMS;
COD; PEEL & EAT SHRIMP; STUFFED CRAB; SCALLOPED POTATOES; ROLLS & BUTTER;
DESSERT; COFFEE; TEA; ICED TEA.

COST: \$13.50 PER PERSON (INCLUDES GRATUITY AND TAX)

RESERVATIONS MUST BE RECEIVED
AT THE NCC POST OFFICE BOX BY OCTOBER 31, 1994



NCC Museum of Cambridge Glass

The museum is located on U.S. Route 40, one-eight mile east of I-77 near Cambridge. Hours: 9 a.m. to 4 p.m., Wednesday through Saturday; noon to 4 p.m., Sunday (March through October). Phone 614-432-4245.

Closed Mondays, Tuesdays, Easter and the 4th of July.

Membership Renewal Notice

This is your last issue of the *CRYSTAL BALL*, if the date on your address label reads 10/94.

Please renew now!

National Cambridge Collectors, Inc.
P.O. Box 416, Cambridge, Ohio 43725-0416

NON PROFIT
ORGANIZATION
U. S. POSTAGE
PAID
Dayton, OH
Permit #974

FORWARDING AND RETURN
POSTAGE GUARANTEED

PLEASE DELIVER PROMPTLY, DATED MATERIAL.