



Cambridge Crystal Ball

Published monthly by National Cambridge Collectors, Inc.
to encourage and report the discovery of the elegant and boundless product of the
Cambridge Glass Company of Cambridge, Ohio

issue No. 259

November 1994

MUSEUM MOMENTS

by J. D. Hanes

By the time that most of you read this, the Museum will be closed for the season. What a season it has been!

In next month's issue of the CRYSTAL BALL, I will have a breakdown of the admissions this year. However, as I write this at the beginning of October, we have already had more visitors than last year, and the year before. For those who are new members, last year there was major road construction on Route 40 and it was very difficult to get to the Museum. Therefore, we had fewer visitors than in 1992.

Also, since we published the Caprice Book this year, I have been very busy shipping all of your orders. I am sorry if I did not get them out to you as quickly as you had hoped.

The Museum Interior Committee has not had much time to work on the Museum. With county and state fairs occurring, and our regular jobs, time has been hard to find. That is why many of you have not received "thank you" letters for the convention mini-auction or any donations that you made at the Convention. We hope to have all these out by the beginning of November. I will give you an update on these in next month's article. Also, with the closing of the Museum for the winter, we again start on cleaning, changing displays, and all of the other tasks that we cannot do when the Museum is open. Believe me when I say that doing all of this is very time consuming. However, it is

also interesting and a lot of fun.

Now I'll go on to more important things. Museum donations received since the last issue are:

In memory of William Mumma, who was a mould maker at the factory, given by his daughter and son-in-law Nellie and John Maslowski: A copy of a photograph taken in December 1952 of all of the employees of the mould shop; three #497 10 oz. tumblers in Crystal, all three with the original labels and one with the large label for the reopening of the Cambridge Glass Company on March 28, 1955 (see illustration on page 20); and a tool, that is a ruler, level, and angle maker, that was given to Mr. Mumma by Wib Orme, who told him that it belonged to A. J. Bennett.

In memory of Doyle Hanes were monetary donations from Phyllis Smith; Milbra Long; and Bud and Anna Walker. These will be put in the Museum Fund. Also in memory of Doyle Hanes was a large monetary donation from Bonnie Quaintance for the Building Fund.

All of these donations are greatly appreciated, and help to maintain the educational value of the Museum.

I hope that you all have a wonderful Thanksgiving holiday and, if you are traveling, you have a very safe trip.

Until next month, Happy Cambridge Hunting!

Cambridge CRYSTAL BALL

Official Publication of National Cambridge Collectors, Inc. a nonprofit corporation with tax exempt status. Published once a month for the benefit of its members. All rights reserved; reproduction in whole or in part without written permission of NCC and the author is prohibited. Membership is available for individual members at \$17 per year and additional members (12 years of age and residing in household) at \$3 each. \$12.00 of the \$17.00 annual dues is for a 1 year subscription to the Cambridge CRYSTAL BALL. All members have voting rights, but only one CRYSTAL BALL will be mailed per household. Foreign mailings subject to a postage surcharge. Back issues of the CRYSTAL BALL are available (beginning with Issue No. 1, May 1973) for members only. Cost: \$1.00 each or 12 issues for \$10.00.

1994-95 Officers & Committee Chairpersons

President	Joy R. McFadden
Vice-President	Mark A. Nye
Secretary	Richard Jones
Treasurer	David B. Rankin
Sergeant-at-Arms	Cynthia A. Arent
Acquisitions	Joe Andrejeak
Budget & Finance	David B. Rankin
By-Laws	Charles Upton
Long Range Planning	Rick Jones, Tarzan Deel, Mike Arent
Membership	Jeff Ross
Museum Expansion/Relocation	Willard Kolb, J. D. Hanes
Museum--Facilities	Carl Beynon, Joe Miller
Museum--Interior	J. D. Hanes
Non-Glass Items	Tarzan Deel
Nominating	Mark A. Nye
Program	
Project	Tarzan Deel
Publications	Mark A. Nye
Publicity	Cynthia A. Arent
Study Group Advisor	Marybelle Moorehead
1995 Auction	Lynn M. Welker
1995 Antique Show	Mary Beth Hackett, Charles Upton
1995 Convention	Mark A. Nye
1995 Flea Market	Marybelle Moorehead
CRYSTAL BALL Editor	Sue Rankin

Classified Advertising Rates

10 cents per word \$2.00 Minimum
We cannot mix type size in classified advertisements. Abbreviations and initials will count as words. Payment in full must accompany all ads.

Display Advertising Rates

(Camera-ready ads preferred)	Members	Non-Members
1/8 page	\$10.00	\$15.00
1/4 page	15.00	25.00
1/2 page	25.00	35.00
3/4 page	35.00	50.00
Full page	45.00	60.00

Dealers Directory

Six-line maximum \$24.00 for 12 months

Cambridge CRYSTAL BALL assumes no responsibility for items advertised and will not be responsible for errors in price, description or other information.

Advertising copy, articles, club news and notices must be in our P.O. Box by the 5th of each month to assure publication in our next issue.

Paid advertisements containing reproductions or new glass will not knowingly be accepted for publication.

Opinions or information stated in any signed article or letter printed in the CRYSTAL BALL are those of the authors and may or may not agree with National Cambridge Collectors, Inc. The Editor reserves the right to refuse and to edit any material submitted for publication to conform with the editorial style of the CRYSTAL BALL.

Please Address All Correspondence to:

National Cambridge Collectors, Inc.

P.O. Box 416, Cambridge, Ohio 43725-0416

President -- Joy R. McFadden 614/885-2726

Secretary -- Richard Jones 914/631-1656

Editor -- Sue Rankin 513/833-4626 Phone & Fax

NCC Museum /J. D. Hanes -- 614/432-4245 Phone & Fax

Please notify us immediately of any change in your address.

Please enclose an SASE when requesting information.

CAMBRIDGE GLASS BOOKS FOR SALE

By National Cambridge Collectors, Inc.

- **Colors in Cambridge Glass ***
128 pages, 60 color plates, fully indexed
Hardbound with price guide. \$19.95
- **1930-34 Cambridge Glass Company Catalog Reprint ***
250-page reprint of original catalog
Paperback with price guide. \$14.95
- **1949-53 Cambridge Glass Company Catalog Reprint ***
300-page reprint of original catalog
Paperback with price guide. \$14.95
- **1956-58 Cambridge Glass Company Catalog Reprint ***
164-page reprint of original catalog
Paperback. \$6.95

* For NCC members only, the above publications are available at a 10 percent discount.

By Bill and Phyllis Smith

- **Cambridge Glass 1927-1929**
66-page reprint of original catalog
Paperback w/identification guide. \$7.95

By Cambridge Buffs Study Group

- **Nearcut**
108-page reprint of 1910 Cambridge catalog
Paperback with price guide. \$9.95
- **Price Guide**
Updated price guide for Nearcut Catalog
reprint (including postage). \$3.00

By Mark A. Nye

- **Cambridge Rose Point**
94 pages, fully indexed
Paperback with updated value guide. \$12.95
- **Value Guide**
Updated value guide for Rose Point book
(including postage). \$5.00

By Mary, Lyle and Lynn Welker

- **Cambridge Glass Company**
120 pages of reprints from eight old catalogs
Paperback. \$10.00
- **Cambridge, Ohio Glass in Color II**
Spiralbound. \$5.95

By Harold and Judy Bennett

- **1903 Cambridge Glass Company Catalog Reprint**
106-page reprint of an original catalog
Paperback. \$7.50

Address your orders to:

Books

National Cambridge Collectors, Inc.

P.O. Box 416

Cambridge, OH 43725-0416

Please add postage and handling to your order (first book, \$2.00; each additional book, 50 cents). Ohio residents add 6 1/2 percent state sales tax.

Dealer discounts available - please write!

Smokers' Items

by Mark A. Nye
Part VI

This series of articles on smokers' items ends this month with a review of what was available during the years the "new Cambridge Glass Co." was in operation. The original Cambridge Glass Co. ceased operations during the Summer of 1954 and was sold. Following a reorganization by the new owner, the "new Cambridge Glass Co." began producing glass in March 1955. Operations ceased for good four years later. During those years, often called the reopen(ed) years or reopen(ed) period, many items offered were from molds designed and created by the original company.

During the final months of the original company, an additional Pristine line ash tray, the P737 canoe ash tray, came into being. One of two last smokers' items designed by the original Cambridge Glass Co., it is not certain the canoe ash tray was ever sold by them. This ash tray does appear in the new company's catalog, on two price lists issued in 1956, but not on the final price list, issued in 1958. Made only in Crystal, its 1956 list or retail price was \$1.00.

Besides the canoe ash tray, planned for but probably never produced, was one more cigarette box and cover. The available information about this box, a few words in the mold order book, does not even provide the size, much less any type of description.

During the first few months of its operations, the "new Cambridge Glass Co." designed their 1956 line. This line contained two sizes of ash trays, a coaster ash tray and spoon holder, and an ash tray with a peg plus several articles not related to smoking. These included an eight-inch oval bowl, a ten-inch bowl, salt and pepper shakers and a floral center piece based on the ash tray with peg.

Commonly called the "ham bone ash tray," the 1956 ash tray was made in two sizes; the 1956/1 measured 10 inches while the 1956/5 measured 8 inches. Both came plain or with cut top and in the colors of Crystal, Pink, Smoke, Pistachio, Mandarin Gold and Moonlight Blue. The 1956/10 coaster ash tray and spoon holder came only in Crystal.

Made in Crystal and Smoke, the 1956 floral center piece is based on the 1956/1 ash tray changed by adding a peg. It then became the 1956/2 ash tray with peg. A flower block that fits over the peg and with holes for three 5-inch peg vases is the next component. Completing the center piece is the 1956/4 5-inch optic peg vase. This peg vase is similar to the 1633 5-inch peg vase but differs in that it has a smaller base and has the optic pattern. The actual center piece consists of the 1956/2 ash tray with peg, the 1956/3 flower block and three 1956/4 peg vases.

The Sonata line was the only line of dinnerware created by the "new Cambridge Glass Co." A small line, it did include a single ash tray, the 1957/6 12-inch executive ash tray. Made only in Crystal, this ash tray has a cut and polished top and originally came in a white gift box. An expensive item for its time, it retailed for \$12.00 each.

Besides the items seen on the 1956 catalog pages reprinted with this article, illustrated in the Gifts section of this catalog is the 3011 or Nude ash tray. The caption in the price list read: "Lady Figure Line. Made in Smoke, Pink, Mandarin Gold, Moonlight Blue, Pistachio, Carmen. Crystal stem and foot, colored bowl." By 1958, the only Nude or Lady Figure item still available was the cocktail.

Classified

FOR SALE Nearcut Tankard Pitcher with Peacock design. Write for price and details.

WANTED Nearcut Tumblers to match tankard Fish and Peacock pitchers. Give price and condition. **Vivian Karsnitz**, 1428 Jerry Lane, Manheim, PA 17545 (717)665-4202.

WANTED: Advertisers interested in good results to place ads in this space. **National Cambridge Collectors, Inc.** PO Box 416, Cambridge, OH 43725.



No. C327
CIGARETTE BOX-COVER



No. P-727 - CANOE ASH TRAY



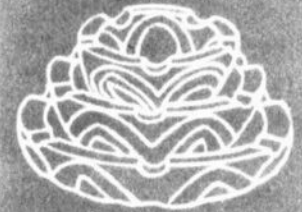
No. 1956/5 - 8" ASH TRAY



No. P721
2 1/4" SQUARE ASH TRAY



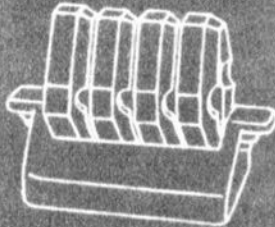
No. 1040 - SWAN ASH TRAY



No. C314/215/216
3-PIECE ASH TRAY SET



No. 390 - 4" ASH TRAY



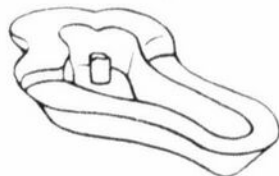
No. P726
5-PIECE ASH TRAY SET



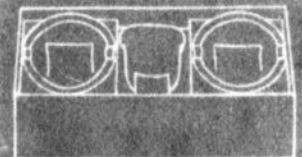
No. 733/4/5 - 3-PIECE ASH TRAY SET



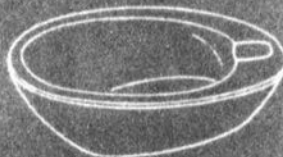
No. 391 - 8" ASH TRAY



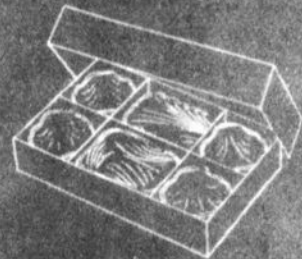
No. 1956/2
10" ASH TRAY WITH PEG



No. 3797/152
3-PIECE SMOKER SET



No. P-725 - 4" ASH TRAY



No. C207/213
6-PIECE SMOKER SET



THE CAMBRIDGE GLASS COMPANY, CAMBRIDGE, OHIO, U.S.A.

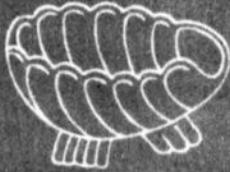
Smokers' Items



No. P-733 - 3" ASH TRAY



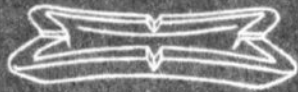
No. P734 - 4 1/4" ASH TRAY



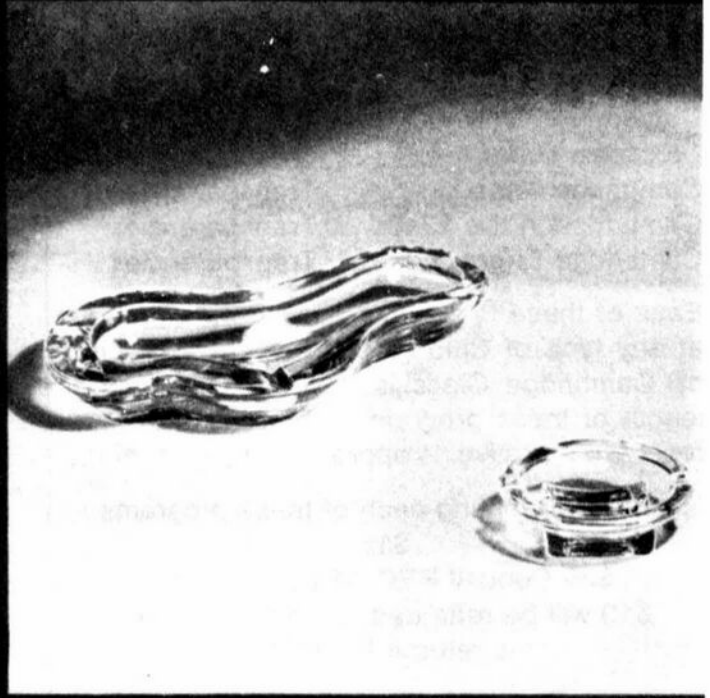
No. C213 - 2 1/2" ASH TRAY WITH CARD HOLDER



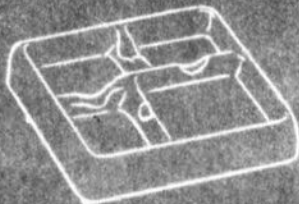
No. C214 - 3" ASH TRAY



No. 1987/6 - ASH TRAY



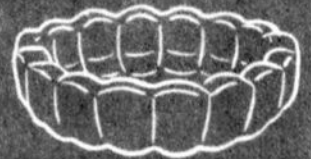
No. C216 - 5" ASH TRAY



No. 1958/10 - COASTER ASH TRAY AND SPOON HOLDER



No. C215 - 4" ASH TRAY



No. 216 - CASCADE 8" ASH TRAY

NCC EDUCATIONAL PROGRAMS

FOR RENT and FOR SALE

National Cambridge Collectors, Inc., has several educational programs available for rent. These programs are in one of two formats: 35mm slides or 8½" x 11" transparencies (for use with an overhead projector). All come with a written narrative and all, except the Caprice program, have a cassette recording of the narrative available.

FOR RENT ONLY - The programs currently available are as follows:

<u>TOPIC</u>	<u>FORMAT</u>
Cambridge Etchings	Slides
Cambridge Colors	Slides
Cambridge Stemware	Slides
Caprice	Slides
Cambridge History 1901-1954	Transparencies
Cambridge - The Reopen Years	Transparencies
Cambridge Arms	Transparencies
Cambridge in the 1940s	Transparencies
Cambridge Engravings	Transparencies

Each of these is suitable for use as a program at any type of Club meeting where a program on Cambridge Glass is desired. The average length of these programs, when using the pre-recorded narrative, is approximately 30 minutes.

The fee for renting each of these programs is \$15.

\$25 Deposit REQUIRED for each.
\$10 will be refunded when the program is returned to NCC.

FOR SALE- VCR Movie "The Crystal Lady"

Includes pictures of factory and workers made from old 16mm film - 40 minutes.
\$15 each - plus \$2 P&I

Inquiries regarding the rental & purchase of these programs should be sent to:

NCC, Inc. Program Rentals
PO Box 416
Cambridge, OH 43725-0416

Study Club News

Study Group #16 - Mid-Atlantic "Elegant Glass Collectors"

Sunday, September 25 six members and three guests, traveling from a four-state area, met at Shupp's Grove in Adamstown, Pennsylvania. The meeting was convened at noon. A picnic lunch consisting mostly of sandwiches was brought and consumed.

Discussion was held concerning plans for the showing of Ohio Glass, of which Cambridge would be featured, at the Wheaton Museum.

Plans to meet at Earussi's on October 16 at 1:00 p.m. were discussed.

Show and tell included: a Moderne Smoke plate, a Crystal covered bunny box, a Bluebell vanity compact and covered pitcher, a rare Ivory Wetherford berry set, Azurite candlesticks and footed comport-type bowl, a Pearl Mist nude shell comport, Ivory candlesticks with a Dresden basket decoration, and other non-Cambridge items.

Bud Walker showed the difference between Cambridge Rose Point and Rose Point by Imperial.

Submitted by
Pam Earussi

1906 CATALOG

In 1988 it was decided that the 1906 Cambridge Glass Company catalog did not include enough unique, unpublished information, to warrant publishing it as a catalog reprint. Nevertheless, it was decided to publish a few pages at a time in the CRYSTAL BALL, as space permitted, to provide this information to the membership. Therefore, starting with the January 1989 issue, this has been done.

We know that pages of Jelly Jars are not particularly exciting, but upon the completion of this project, the entire catalog will be available in the CRYSTAL BALL. Upon completion of the catalog, an index cross referencing pages and the issues in which they appear will be published.

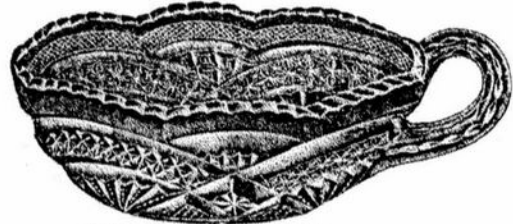
With the eight pages published in this issue, we now have only 26 of the original 194 pages remaining.

No. 2577 Ware.

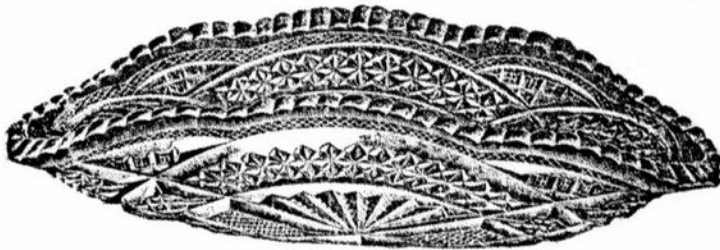
SCALE, HALF SIZE.



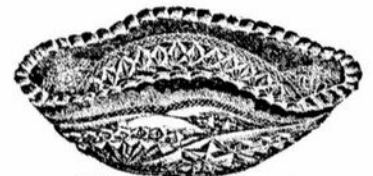
5 inch Olive, Handled, B Shape.
Packed 9 dozen in a barrel.



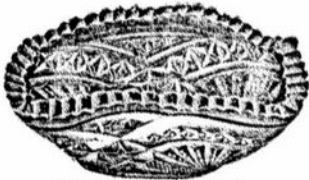
5 inch Olive, Handled, A Shape.
Packed 10 dozen in a barrel.



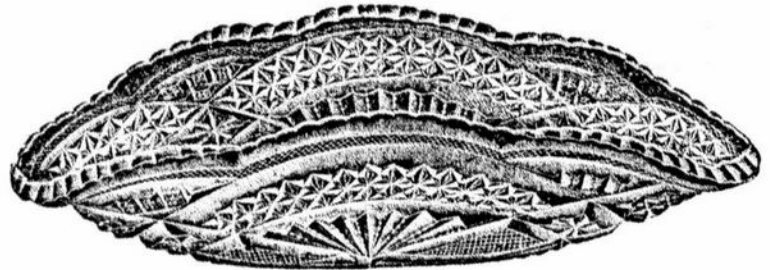
9 inch Celery Tray.
Packed 5 1/4 dozen in a barrel.



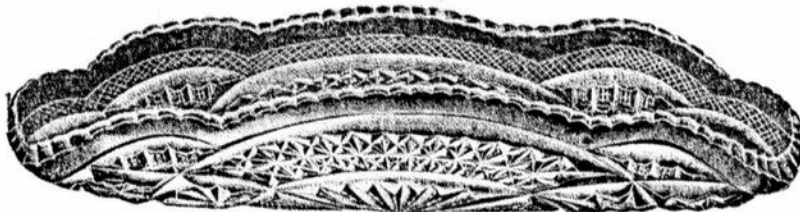
4 1/4 inch Berry, C Shape.
Packed 16 dozen in a barrel.



4 inch Berry, B Shape.
Packed 18 dozen in a barrel.



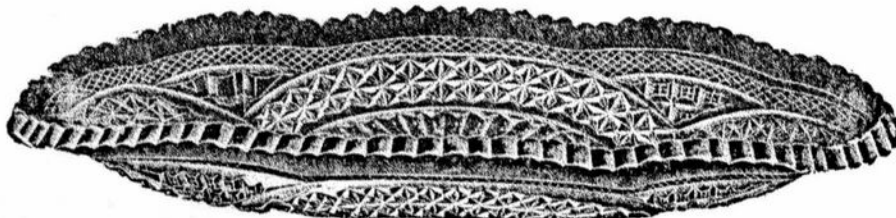
10 inch Celery Tray.
Packed 4 dozen in a barrel.



11 inch Celery Tray.
Packed 4 1/4 dozen in a barrel.



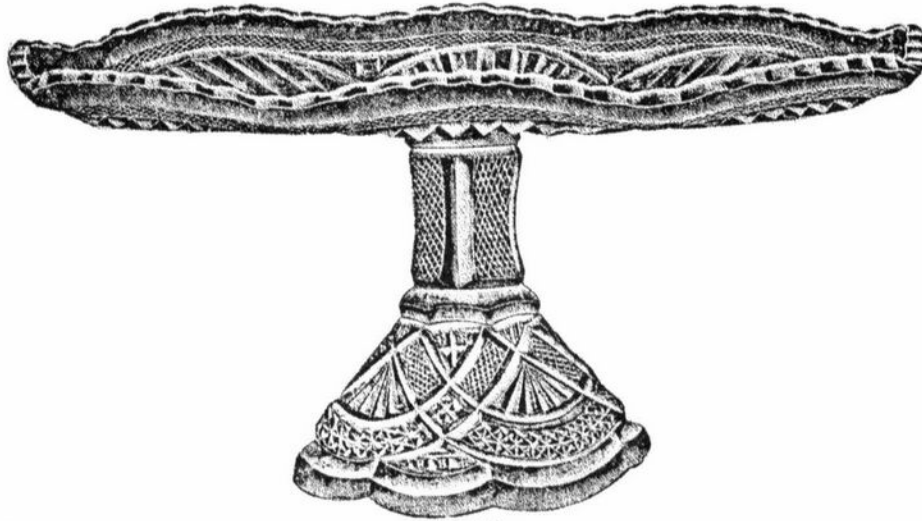
4 inch Berry, Shape A.
Packed 24 dozen in a barrel.



12 inch Celery Tray.
Packed 5 1/4 dozen in a barrel.

No. 2577 Ware.

SCALE, HALF SIZE.



12 inch Silver
Packed 5-6 dozen in a barrel.

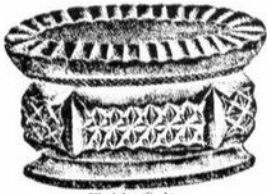
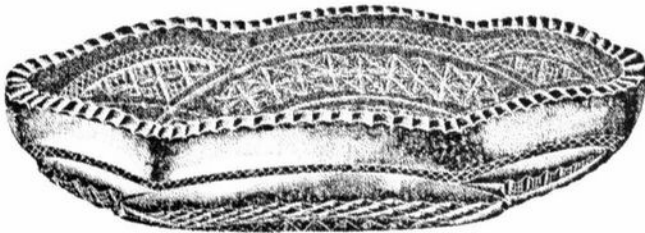


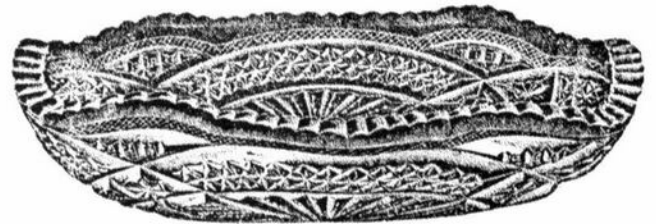
Table Salt.
Packed 30 dozen in a barrel.



Individual Salt.
Packed 75 dozen in a barrel.



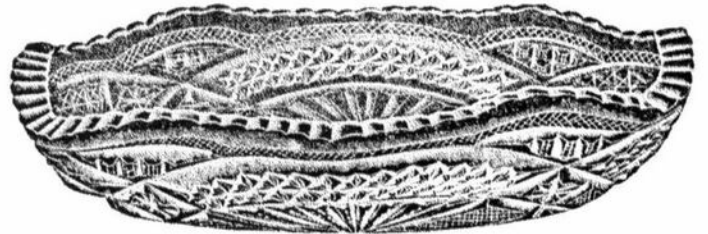
8 inch Oval, A Shape.
Packed 6 1/2 dozen in a barrel.



8 inch Oval, B Shape.
Packed 6 dozen in a barrel.



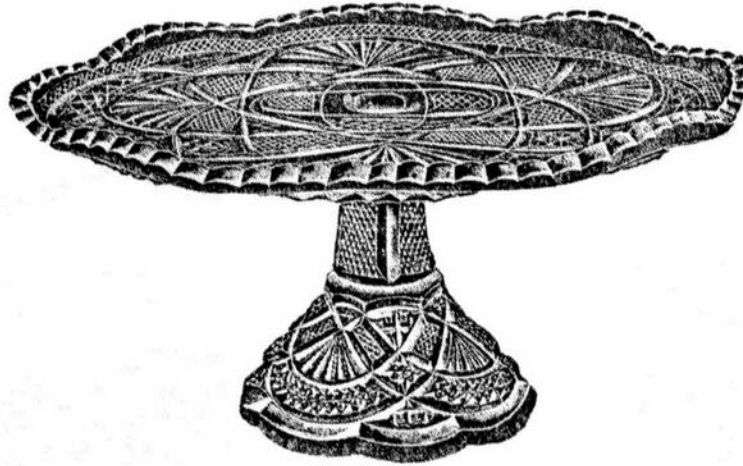
Salt or Pepper.
Packed 32 dozen in a barrel.



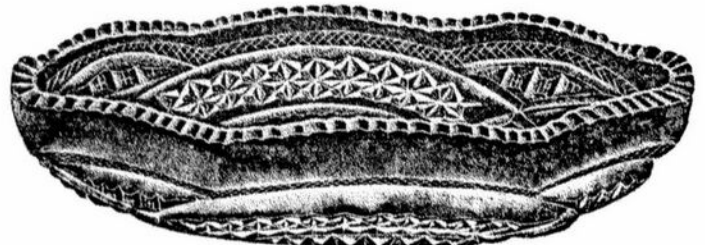
8 inch Oval, C Shape.
Packed 6 dozen in a barrel.

No. 2577 Ware.

SCALE, HALF SIZE.



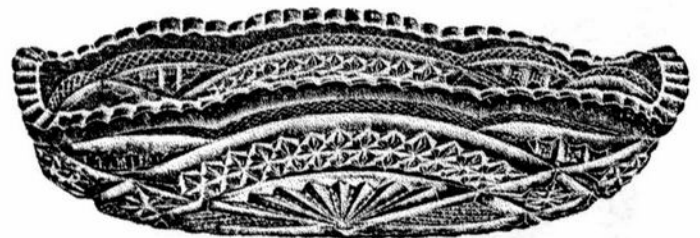
10 inch Salver.
Packed 1½ dozen in a barrel.



9 inch Oval, A Shape.
Packed 5 dozen in a barrel.



8 inch Salver.
Packed 2 dozen in a barrel.



9 inch Oval, B Shape.
Packed 4½ dozen in a barrel.



9 inch Oval, C Shape.
Packed 5 dozen in a barrel.

No. 2577 Ware.

SCALE, HALF SIZE



Tumbler.
Packed 20 dozen in a barrel.



Squat Jug
Packed 2½ dozen in a barrel



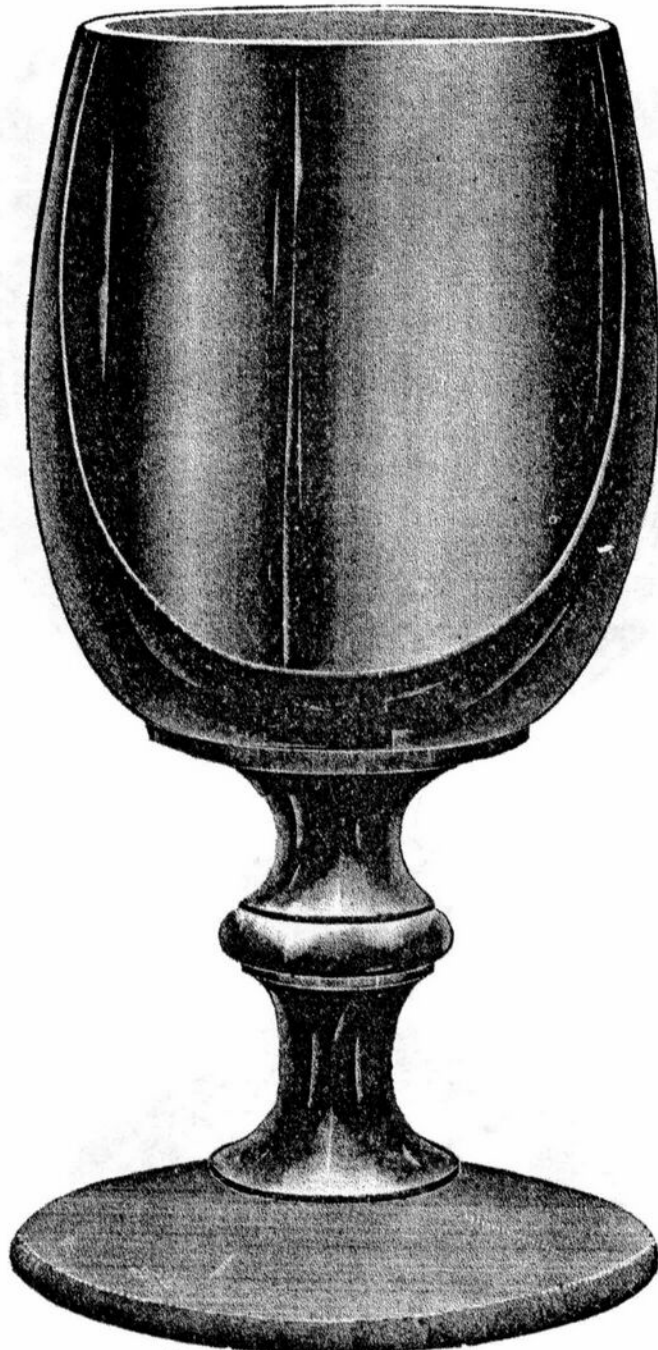
Half Gallon Jug.
Packed 1½ dozen in a barrel.



Finger Bowl.
Packed 12 dozen in a barrel.

Weiss Beers, Cup Foot.

SCALE, FULL SIZE



No. 1064 23 ounce Weiss Beer, Shammed.
(Also finished straight.)
Packed 3 $\frac{1}{4}$ dozen in a barrel.

Weiss Beers, Cup Foot.

137

SCALE, FULL SIZE.



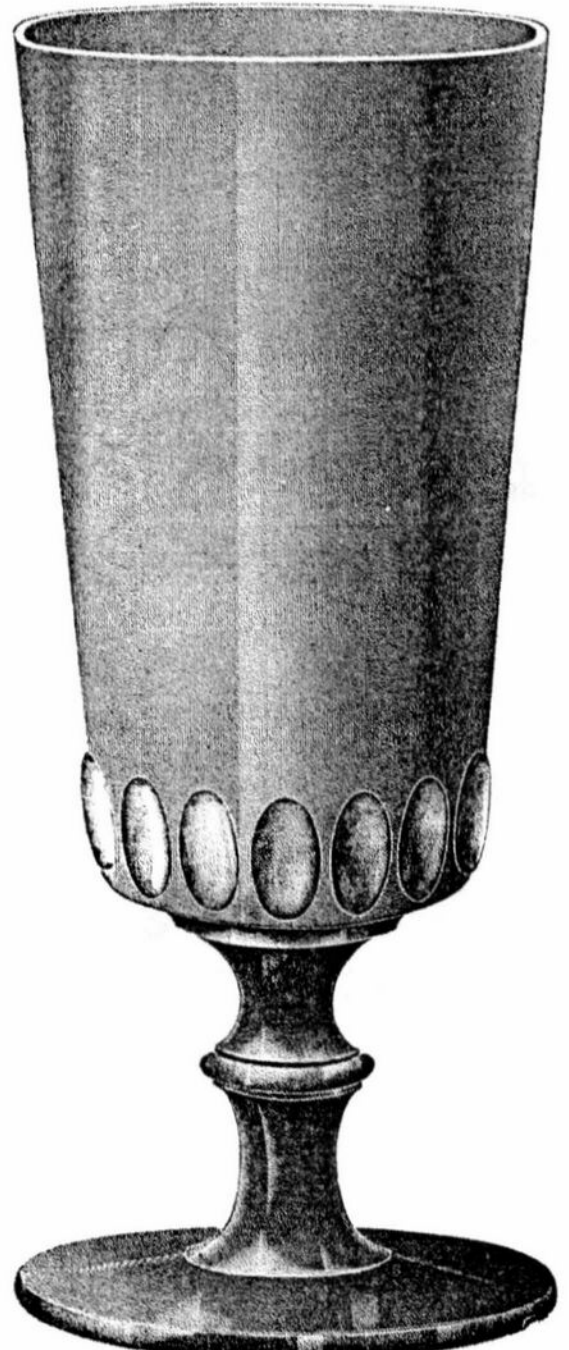
No. 1055 31 ounce Weiss Beer.
Packed 2 $\frac{1}{2}$ dozen in a barrel.
(Also made shammed.)
Capacity. 28 ounces.

Weiss Beers, Cup Foot.

SCALE, FULL SIZE.



No. 1055 16 ounce Weiss Beer.
Packed 5¼ dozen in a barrel.

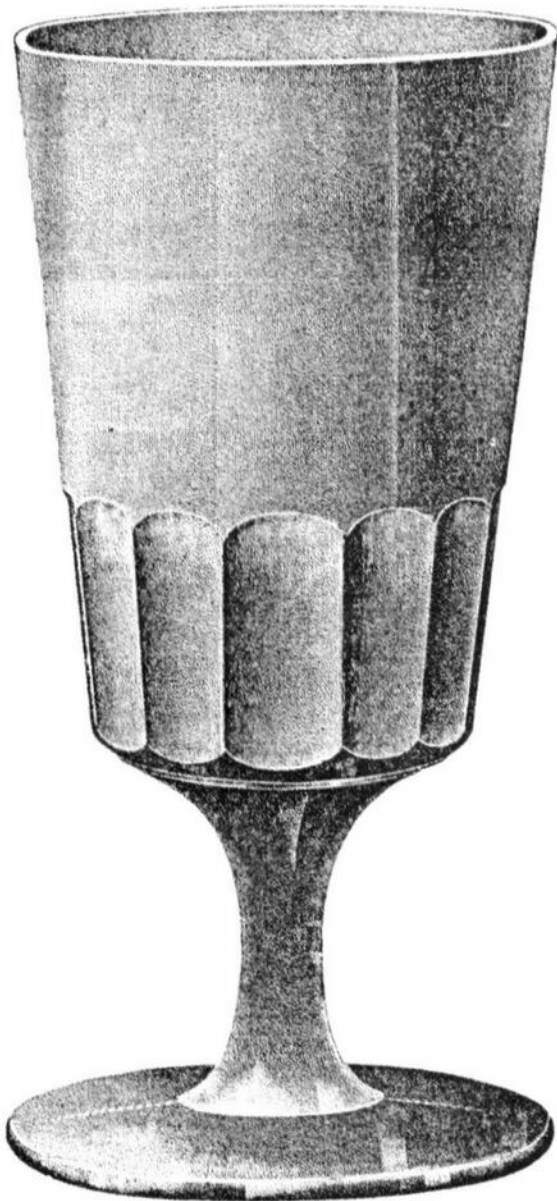


No. 1057 Weiss Beer.
Capacity, 16 ounce.
Packed 5 dozen in a barrel.

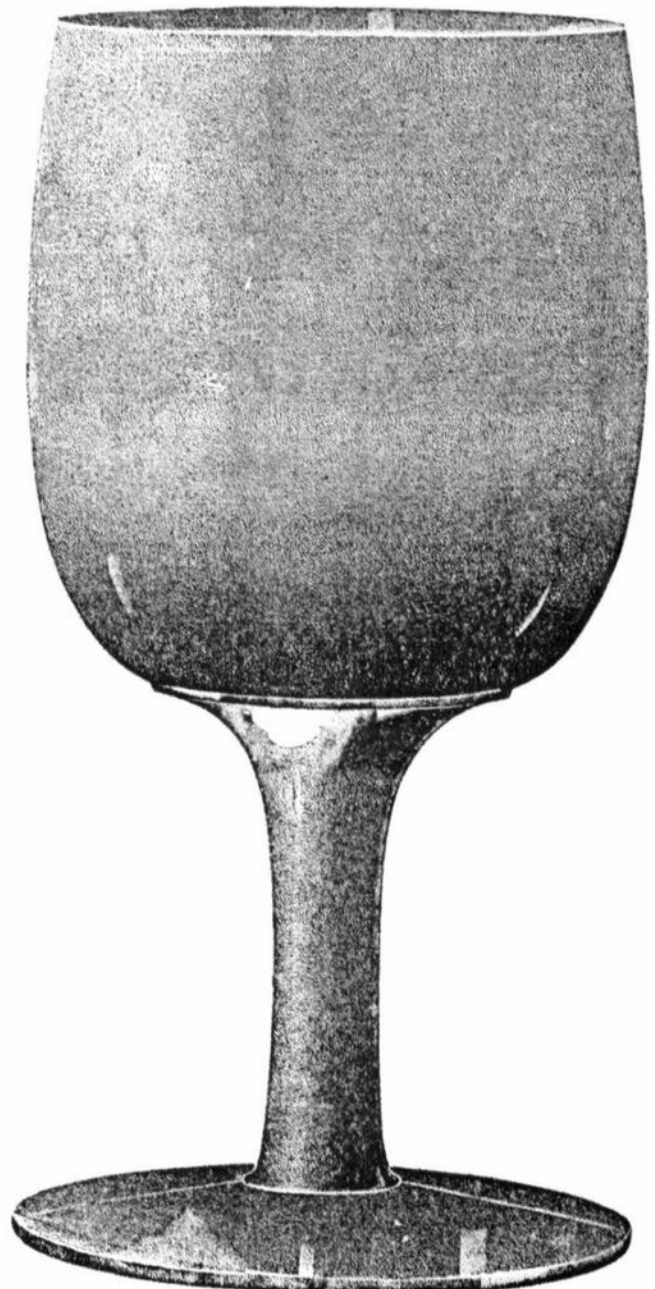
Weiss Beers, Cup Foot.

139

SCALE, FULL SIZE.



No. 1058 Weiss Beer.
Capacity, 14 ounce.
Packed 6 dozen in a barrel.



No. 1059 23 ounce Weiss Beer.
Packed 4½ dozen in a barrel.

Study Club News

Study Group #13 - Southwest Ohio "Miami Valley, Ohio"

The Miami Valley Study Group held their monthly meeting on September 13, 1994 at the Huber Heights Public Library. Eleven members were present.

During the business meeting, discussion was held concerning our money-making project at Convention, the etching book, plans to complete phase II on the landscaping at the Museum on September 17, and our program schedule for the year.

We would like to invite anyone who is interested to attend our programs for the coming year:

- Oct. 11 - Reproductions by Remaining Companies Not Yet Discussed - led by the Wollenhaupt
- Nov. 8 - The Video on Candlesticks - led by the Ottens (to be held at the Otten's house because it's election day and the library is not available)
- Dec. - Christmas Party - date to be scheduled
- Jan. 10 - Engravings and Cuttings - led by Rankins
- Feb. 14 - Learning how to Blow Glass at Oglebay - led by the Huffords
- Mar. 14 - Slides of Past Convention Displays - led by the Wollenhaupt
- Apr. 11 - Candy Items - led by Fred Schaefer
- May 9 - Beverage Containers - led by the Rhoads'

Our program was on Summer Finds, and our members certainly displayed a harvest of Cambridge treasures:

Topaz Wetherford Master Berry Bowl; #437 Avocado candlestick; Virginian #211 10" 3-part relish; #109 Amber Dolphin candlestick; 8" Crystal Draped Lady flower frog; Milk Glass cornucopia; Nearcut Feather vase; Decalware cracker plate and plainware bowl; Moonlight blue short hat ashtray; #3400 Peach-blo nut cup; Crystal Caprice Alpine coaster; Peach-blo coasters; Caprice Crystal cigarette box; #1040 Carmen 3" swan, style 3; #1040 Gold Krystol 3" swan, style 2; Caprice Crystal diamond shaped nappy; Special Article #24 Azurite individual cream and sugar; #235 Carrara Community candlesticks; 6-1/2" Special Article Avocado bowl; Gadroon cereal bowls, etched Rose Point; #627 4" Crystal candleholders etched Cleo; #3065 11 oz. goblet, Blue Willow etch and border, gold trim; coaster, etched Rose Point; #240 10" Primrose footed cake plate,

gold decoration, with original store paper label price tag; 10-3/4" Rubina block optic vase; Crystal Dresden Lady; Royal Blue Sea Shell ash tray/card holder made by Summit; 8-3/4" Helio bowl with gold decoration with Helio flowers showing through gold decoration; #210 Azurite tobacco jar; #523 Peach-blo oriental flower frog; #523 Peach-blo oriental lamp; #12 6 oz. sugar and creamer, etched 758; #1917/88 1 lb. Crystal candy jar with gold ship etching; #96 Chelsea Matinee Cream in Crystal with enamel floral decoration; #188 2 oz. Emerald Green Caprice tumbler; #1040 6-1/2" Carmen swan; #3400/144 cigarette holder with ashtray foot and place card holder with rock crystal engraving; #1371 Dog cigarette holder, Mulberry; #1312 footed cigarette box and cover in Royal Blue/Crystal; #80 Ivory 6" vase with decorated daisies; #3400/1240 12" oval bowl etched Rose Point; #595 Carmen mug; #63 10 oz. goblet, etched Adam; #3400/96 Gold Krystol three piece vinegar and oil set; #99 Pristine cocktail shaker, rock crystal engraved Moreno; Opal soap dish (in 1903 catalogue); Hat etched Rose Point (unsure about how to measure: #1701 = 9", #1702 = 8", #1703 = 6", #1704 = 5").

Submitted by
Judy Rhoads

We Get Letters

Dear Sue:

Thought I would let you know Frank is doing fine.

We canceled the convention because he had been scheduled for another heart catherization and then July 18th he had a quadruple bypass. He is getting stronger with each day and doing more and more activities.

We hope we can make the 95 Convention.

Phyllis Hayes
Michigan

Dear Phyllis:

We are delighted to hear that Frank is doing so well. I always enjoy having such good news to impart to our membership.

We missed you this year and look forward to seeing you at the 95 Convention.

Sue

Dear Sue:

I recently watched a report on CNN television in regard to Senators "pet projects" in their home states. It was very enlightening. A Senator from Pennsylvania has been able to garner "millions" for his home state for not one but "2" Railroad Museums. In West Virginia a Senator has garnered "millions" for restoration of some old buildings that I guess were of some historical value to the "very small town," and as the report stated, was more important to the local population than anyone in the U.S. Another Senator garnered "millions" for a park and in the report it rather stated that the park was not of any particular interest. In light of this report and Senators able to garner "millions upon millions" for their home states and "pet projects." I would highly recommend and suggest that Cambridge Glass collectors and members of the NCC contact Ohio's Senators and the Governor of the state and impress upon them the need for a new location and for a larger Museum for CAMBRIDGE GLASS, as well as the importance of CAMBRIDGE GLASS, and its preservation. I'm sure if we can get the Senators and the Governor "involved" in this "worthwhile project," and "worthwhile and of importance to people across the United States," that a new location and museum would be assured. It is certainly worth a "college" try and nothing ventured nothing gained as they say.

CAMBRIDGE GLASS is certainly deserving with all the avid collectors across the whole of the United States and probably the world for that matter. And, as I have stated, it would be a boost for the town of Cambridge, Ohio, and surrounding areas.

Sincerely,
Bonnie J. Quaintance
California

Dear Bonnie:

[Your letter was referred to the Relocation/Expansion Committee for reply - Sue.]

We found your letter interesting and we also have seen items of a similar nature on CNN as well as other news programs.

We totally agree that Cambridge Glass and the Museum of Cambridge Glass deserve any assistance that can be had. However, as has been stated before, we must have a certain amount of money in the Building Fund before "outside funders" can be approached.

Outside funding is something that will be investigated and pursued, but, we cannot do anything until a certain point in funding from the membership is reached. We have talked with Sue Rankin, who is Executive Director of a foundation that awards grants to organizations. She has explained to us, as well as the Board of Directors at different times, the requirements that organizations must meet before they are ever considered for funding.

This is also the case in approaching any elected officials for funding assistance from either the state or federal government. We know this from a few different projects that have received assistance from the government.

As was stated at the Annual Meeting, we have many, many things to consider and evaluate before we do anything major. Most of these items cost money. Some of these would be: site surveys; appraisals of our current site and any other site we may be interested in; E.P.A. impact studies; architect's and engineer's fees and other such items.

One concern, is that while the programs that you saw on CNN are informative, they are mainly showing the Senators and Congressmen that gathered this "pork barrel funding" in a bad light. It also gives a bad impression of the organizations that are receiving these funds. This is something that we would not want to have happen to the National Cambridge Collectors organization, or to the Museum of Cambridge Glass.

You many have noticed that the paragraph of your letter that listed our U.S. Senators and state Governor has not been published. We requested that our Editor, Sue Rankin, do this as we are electing a new Senator in Ohio this year as well as electing a Governor. Therefore, we do not know as of the deadline for the CRYSTAL BALL, who these people will be.

We appreciate all of your enthusiasm for a new museum. Again, we thank you for your letter, and we will be discussing it further at the next meeting of the Expansion/Relocation Committee. We will have a report for the membership at the November Quarterly Meeting. Also, it will be printed in the December issue of the CRYSTAL BALL.

Sincerely,
J. D. Hanes and Willard Kolb, Co-Chairman
Museum Expansion/Relocation Committee

NOW AVAILABLE
**CAMBRIDGE
 STEMWARE**
 By MARK NYE

In the same format as the original, this completely rewritten second edition presents a number of Cambridge stemware lines not included in the first edition. There is new information on many of the lines that were included in the original. It is fully indexed by stemware lines, etchings, rock crystal engravings, and decorations. Order now for immediate shipment. List price is \$19.95 plus \$2.00 shipping and handling. NCC members may deduct \$2.00 from the book price. Send your orders to:

National Cambridge Collectors, Inc.
PO Box 416
Cambridge, OH 43725-0416

NATIONAL CAMBRIDGE COLLECTORS, INC.
 PRESENTS

Caprice

Just Released. List price is \$19.95 plus \$2.00 for shipping and handling. NCC members may deduct \$2.00 from the book price.

Address your orders to:
 National Cambridge Collectors, Inc.
 P.O. Box 416
 Cambridge, OH 43725-0416

(May be combined with other books ordered from page 2)

**The
 DAZE Inc.**

SPECIAL OFFER
 to NCC friends
\$2.00 OFF
 the 1 year subscription price
 when on this form or copy of it.

The Original National monthly newspaper dedicated to the buying, selling and collecting of colored glassware and china including Depression Glass and the Elegant Glass (Cambridge, Heisey, Fostoria, etc.) We educate and inform you each month with feature articles by top notch columnists, readers "finds", club happenings, show news and a multitude of ads. Find those missing pieces to your 30s, 40s, or 50s pattern. Can't identify it? Perhaps we can help "keep up with what's happening" with a subscription to the DAZE. Buy, sell or trade from the convenience of your easy chair.

Name _____
 Street _____
 City _____
 State _____ Zip _____

1 year \$21.00 2 years \$40.00 \$2.00 Single Copy

Exp. Date _____ Card No. _____
 Signature _____

Orders to:

The Daze, Inc., Box 57, Otisville, MI 48463

Please allow 30 days for your first issue - Canadian Subscribers, add \$1 00 per year and subscribe by charge card only! This Special Offer may not be combined with any other special offer.

Offer Expires December 31, 1994

RIVERFRONT ANTIQUE MALL

**1203 Front Street, S.W.
 New Philadelphia, Ohio**

SHOWCASE SCB 59

I have displayed about 50 pieces of Cambridge Wildflower in mint condition. There is a lot of stemware in the 3121 design. There are misc. pieces such as candy box & cover, comport, bowls, cups & saucers, creamer & sugar, & pair of candlesticks.

ISAACS ANTIQUES



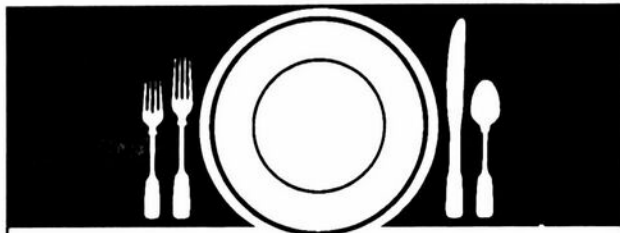
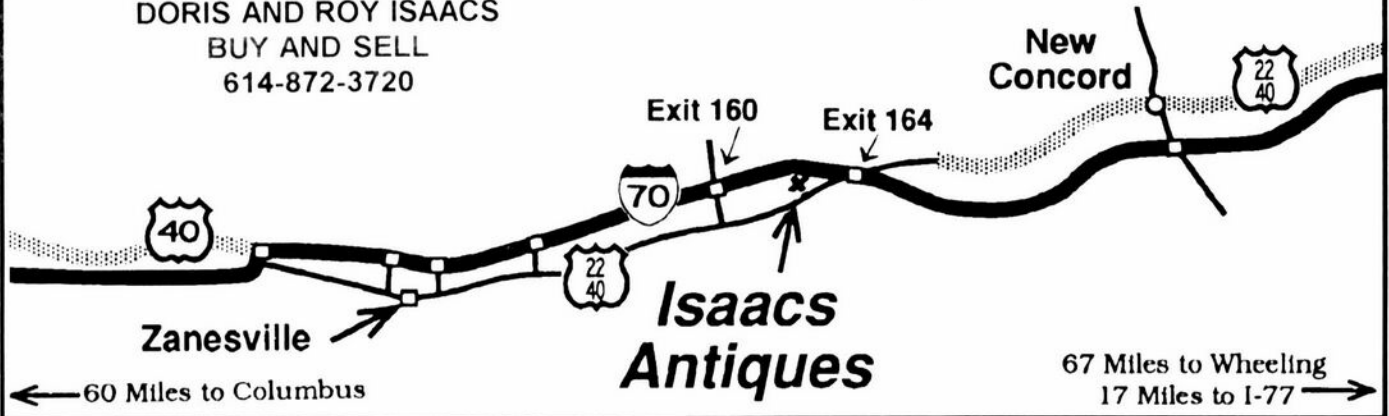
WE FEATURE GLASSWARE OF: CAMBRIDGE,
HEISEY, FENTON & FOSTORIA
Plus Art Pottery & a General Line of Antiques

DORIS AND ROY ISAACS
BUY AND SELL
614-872-3720

7525 East Pike
Norwich, Ohio 43767
614-872-3720

In East Pike Antique Complex - Rt. 40,
One Mile West of I-70 Norwich Exit #164

Hours 10 - 5:30 Mon. - Sat.
12 - 5:30 Sun.
Open Year Round



Give Us Your Wish List

As the world's largest supplier
of discontinued china, crystal
and flatware, Replacements, Ltd.
has 48,000 patterns
and 1.5 million pieces.

Call us or come
and visit our showroom.
Let us help you with your wish list.

REPLACEMENTS, LTD.

Call 1-800-562-4462 or FAX (910) 697-3100, or write:
1089 Knox Road • PO Box 26029, Dept CB
Greensboro, NC 27420

OVER 6800 CAMBRIDGE PIECES

WE CLEAN CLOUDY GLASS!

** SATISFACTION GUARANTEED **

YES, IT IS TRUE THAT WE REALLY CAN RESTORE THE INTERIOR
OF YOUR CRUET, VASE, DECANTER AND MOST OTHER
INTERNALLY ETCHED ITEMS BACK TO NEAR ORIGINAL
CONDITION!

WE DO NOT OIL, WAX OR COVER UP THE SICKNESS IN ANY WAY!
WE ACTUALLY REMOVE IT.

NO ITEMS ARE TOO SICK TO CLEAN! IF WE CANNOT CLEAN YOUR
ITEM TO MEET YOUR SATISFACTION, THE CLEANING IS FREE!

WE ARE SO CONFIDENT IN OUR SERVICE THAT WE ASK THAT
YOU SEND NO MONEY. WHEN WE RETURN YOUR ITEM A BILL
WILL BE ENCLOSED FOR THE POSTAGE & CLEANING. IF YOU ARE
HAPPY, PLEASE SEND PAYMENT; IF NOT, RETURN THE BILL
MARKED "NOT SATISFIED".

PLEASE ALLOW 6-8 WEEKS FOR REDELIVERY OF MOST ITEMS. ALL
GLASS IS HANDLED AND CLEANED AT YOUR RISK. SOME VERY
CLOUDY ITEMS MAY TAKE SEVERAL ADDITIONAL WEEKS.

CRUET	\$20.00	COCKTAIL SHAKER	\$30.00
COLOGNE	\$20.00	SALT SHAKER (SINGLE)	\$15.00
WATER BOTTLE	\$30.00	SALT SHAKER (PAIR)	\$25.00
DECANTER	\$30.00	CRUSHED FRUIT JAR	\$30.00
VASES (UNDER 12 IN.)	\$25.00	LAVENDER JAR	\$20-30.00

ALL OTHERS WRITE FOR QUOTE

SHIP TO: CARLISLE & ASSOCIATES
28220 LAMONG ROAD, DEPT. C
SHERIDAN IN 46069
(317) 758-5767 AFTER 6:00 P.M.

DEALERS



DIRECTORY

NOTE: When writing to the Dealers listed here, please enclose a SASE!

<p>DAUGHERTY'S ANTIQUES Jerry and Shirley Antiques and Collectibles * Mostly Glass Shows & Mail Orders 2515 Cheshire No. 402-423-7426 Evenings Lincoln NE 68512</p>	<p>"HAPPINESS IS" Buddy and Kathy Stultz 3106 Warren Court, Glen Allen, VA 23060 804-672-8102 Specializing in American Made Glass We Buy & Sell, Shows & Mail Order</p>	<p>THE MUTED SWAN ANTIQUES 5486 Peachtree Rd. Chamblee, GA 30341 Heart of Chamblee Antique Row Specializing in Cambridge, Heisey and Fostoria Bill & Pat Miller 404-451-7620</p>
<p>Milbra's Crystal Buy & Sell Replacement and Matching Specializing in: Cambridge Milbra Long (817) 645-6066 Fostoria Emily Seate (817) 294-9837 Heisey PO Box 363, Rio Vista, TX 76093 and others</p>	<p>WATKINS (Fine Quality) CAMBRIDGE GLASS SHOP 1429 Marquand Ave. (Corner of Woodlawn) Cambridge, OH 614-432-4460 Lana Watkins</p>	<p>ARMORY ANTIQUES 168 West Main Street Plain City, OH 43064 QUALITY THINGS Cambridge, Heisey, China, Silver, Furniture Mon-Sat 10-5 VISA/MC 614-873-4890</p>
<p>THE GLASS URN 456 West Main Street, Suite G Mesa, AZ 85201 602-833-2702 Mail Order Shows Open Shop CAMBRIDGE, FOSTORIA, HEISEY, ETC.</p>	<p>ANTIQUES ON THE MALL SPECIALIZING IN CAMBRIDGE GLASS Bogart's - Bldg #3 - Norwich, OH Virginia Bennett 614-432-4483 64183 Warne Drive, Cambridge, OH 43725</p>	<p>GATEWAY ANTIQUE MALL, INC. JUST NW OF MINNEAPOLIS-ST PAUL, MN Next to Super 8 in Rogers, MN (I-94/101 Intersection) 85 Dealers 7 Days, 10-6 612-428-8286 ELAINE STORCK, DIRECTOR</p>
<p>ETTELMAN'S DISCONTINUED CHINA & CRYSTAL Cambridge a Speciality P.O.Box 6491-CB Corpus Christi TX 78466 Phone 512-888-8391 Include S.A.S.E.</p>	<p>D & D ANTIQUES Columbus, Ohio Dick Slifko SHOWS ONLY</p>	<p>RONI SIONAKIDES 6565 W. Herbison Rd. DeWitt, MI 48820 517-669-5981 Fostoria, Tiffin, Duncan, Cambridge</p>
<p>THE GLASS CUPBOARD P. O. Box 652 West End, North Carolina 27376 Marcia Ellis Cambridge, Duncan, Heisey 910-673-2884 Shows, Mail Order</p>	<p>JUDY'S ANTIQUES Judy Bennett 422 S. Ninth Street (Corner of Jefferson) Cambridge, Ohio 43725 BUYING Ph.614-432-5855 SELLING CAMBRIDGE GLASS MY SPECIALTY</p>	<p>MCKENZIE'S ANTIQUES & COLLECTIBLES 14700 Detroit Avenue Lakewood, Ohio 44107 (216) 521-2652 (216) 221-9862 (216) 348-3127</p>
<p>ELEGANT GLASSWARE Barbara & Cindy Brock Rt. 1, Box 66AC, Callands, VA 24530 804-724-6762 Cambridge - Heisey - Duncan - Fostoria</p>	<p>GREEN ACRES FARM 2678 Hazelton Etna Rd., Pataskala, OH 43062 (State Route 310 North) Sat & Sun 1-7 PM 614-927-1882 Antiques, Crystal Glass and Collectibles</p>	<p>CRYSTAL LADY 1817 Vinton St., Omaha, NE 68108 Joann D. Hagerty Bus. 402-341-0643 Res. 402-391-6730 Specializing in Elegant Glass & Collectibles</p>
<p>ASK Specializing in Cambridge. Wide variety. Booth #14 in the Antique Mall of Boswell 90 Miles south Chicago, right on U.S. 41. 7 days a week 10-5, except Sun. 12-5 (317) 869-5525</p>	<p>FLORENCE SOLITO 54 Old Stafford Rd, Tolland CT 06084 Stock All Elegant Glassware Mail Order Since 1978 Send Wants 203-872-3294 Satisfaction Guaranteed</p>	<p>YOU CAN ADVERTISE YOUR ANTIQUE SHOP HERE!</p>
<p>MICHAEL KRUMME Cambridge * Heisey * Fostoria * Duncan Miller * Paden City New Martinsville * Fenton * Tiffin * Imperial * Morgantown I search - Send detailed want list - all are kept on file PO Box 5542 Santa Monica, CA 90409</p>	<p>REMEMBRANCES 7597 Daphne Dr., No. Syracuse NY 13212 Shirley S. Ladouceur 315-458-5297 ANTIQUES and COLLECTIBLES MAIL ORDER SHOWS APPOINTMENTS</p>	<p>MARGARET LANE ANTIQUES 2 E. Main St., New Concord, OH 43762 Lynn Welker 614-826-7414 Cambridge Glass Matching Service Hours Mon-Fri 10-12AM, 1-5PM or by Appointment</p>
<p>GLASS RESTORATION BRILLIANT DON & LYNNE CRYSTAL WORMLAND ELEGANT MT. CLEMENS, MICH DEPRESSION 810-468-3519</p>	<p>YOU CAN ADVERTISE YOUR ANTIQUE SHOP HERE!</p>	<p>YOU CAN ADVERTISE YOUR ANTIQUE SHOP HERE!</p>



National Cambridge Collectors, Inc.
P. O. Box 416,
CAMBRIDGE, OHIO 43725-0416

A nonprofit organization dedicated to the preservation and study of Cambridge Glass

You Are Cordially Invited
To Become A Member of

NATIONAL CAMBRIDGE COLLECTORS, INC.

Benefits derived from membership include: receipt of our club publication, The Cambridge CRYSTAL BALL; informative Quarterly Meetings; Antique shows; Auctions; other special events; and unlimited admission to the museum.

The Cambridge CRYSTAL BALL is published the first of each month. This newsletter contains educational and interesting articles, questions and answers, information on reproductions and reissues, notices of all club functions, classified advertisements, dealers directory, and many other features of interest to collectors of Cambridge Glass.

Yearly dues are \$17.00 for individual Members and \$3.00 for each Associate Member. \$12.00 of the \$17.00 annual dues is for a 1 year subscription to the Cambridge CRYSTAL BALL. All members have voting rights, but only one issue of the CRYSTAL BALL will be mailed per household. Foreign mailings are subject to a postage surcharge.

Name (please print) _____ \$17.00

Mailing Address _____

City _____ State _____ Zip+4 _____

Associate Members: (Must be at least 12 years of age and living in the same household.)

1. Name _____

2. Name _____

3. Name _____

Total number of Associate Members _____ @ \$3.00 each \$ _____

TOTAL AMOUNT ENCLOSED: \$ _____

Please make check payable to: NATIONAL CAMBRIDGE COLLECTORS, INC.

Recommended by _____

Membership Renewal Notice

This is your last issue of the *CRYSTAL BALL*, if the date on your address label reads 11/94.

Please renew now!

National Cambridge Collectors, Inc.
P.O. Box 416, Cambridge, Ohio 43725-0416

NON PROFIT ORGANIZATION
U. S. POSTAGE PAID
Dayton, OH
Permit #974

FORWARDING AND RETURN POSTAGE GUARANTEED

PLEASE DELIVER PROMPTLY, DATED MATERIAL.



Label
"Commemorating The Reopening of
The Cambridge Glass Co.
28th March, 1955"
Mentioned in Museum Moments
Article on Page 1

**NCC Museum is closed for the
winter season. It will reopen
March 5, 1995.**