



# Cambridge Crystal Ball

Published monthly by National Cambridge Collectors, Inc.  
to encourage and report the discovery of the elegant and boundless product of the  
Cambridge Glass Company of Cambridge, Ohio

Issue No. 294

October 1997

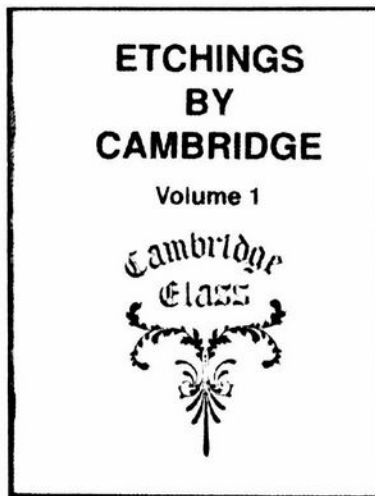
## New Etchings Book Published

This June's NCC National Convention marked the debut of the latest member of our educational book family ... *Etchings by Cambridge, Volume 1*. This 84-page reference volume was authored by the Miami Valley (Ohio) Study Group of National Cambridge Collectors, Inc. It contains 274 prints representing 249 of the etchings produced by The Cambridge Glass Company.

Years of volunteer effort went into producing this important resource. From initiation to completion, the multi-stepped process covered a full decade. Most of the prints included in the book were taken from the actual etching plates used by The Cambridge Glass Company. The book's development process began in 1986 with the initiation of a time-consuming and somewhat tedious process cleaning the, by this time, many-years-old etching plates.

From these plates, prints were then taken. Many were in need of enhancement and computer technology was enlisted to enhance the images' clarity. The team working on the project catalogued the etchings and began to group them into logical categories to set the stage for the editorial development of the book. Again, a very involved process.

*Etchings by Cambridge* is dedicated to the memory of the late Bill Smith, past president of NCC, "who first envisioned this book" and spearheaded the early



development efforts. Among the score of volunteers who assisted on the book are listed editors: Ron Hufford, Georgia Otten, Judy Rhoads, George Stamper, Frank Wollenhaupt, and Lead Editor David Rankin.

No single source has assisted collectors in their efforts to identify Cambridge etches. This book helps fill that void. From Cleo to Classic to Minerva to Roselyn to Rose Point to even Wild Ducks, you'll find this volume to be a needed addition to your library. *Etchings by Cambridge* is \$14.95 plus \$3.00 shipping and handling, and is available

through National Cambridge Collectors, Inc.

[EDITOR'S NOTE: With the holidays approaching, think about *Etchings by Cambridge* or any of our other fine resource publications as a gift for a good friend or special collector. See Page 18 for a complete listing of available books.]

### Inside This Issue:

- NCC Endowment Fund
- Cambridge in the 1920s
- The Jug with the Hidden Trademark
- Quarterly Meeting Minutes
- Six Rings

## Cambridge Crystal Ball

Official publication of National Cambridge Collectors Inc., a non-profit corporation with tax exempt status. Published once a month for the benefit of its members. All rights reserved; reproduction in whole or in part without written permission of NCC and the author is prohibited.

Membership is available for individual members at \$17.00 per year and an additional \$3.00 for associate members (12 years of age and older, residing in the same household). Of the master member dues, \$12.00 is credited to a one-year subscription to the *Crystal Ball*. All members have voting rights, but only one *Crystal Ball* per household. **Effective 1/1/96, multi-year memberships are available: 2 years for \$33.00, 3 years for \$49.00.** Back issues of the *Crystal Ball* are available for \$1.00 each or 12 issues for \$10.00. Complete sets for \$79.00.

### 1996-1997

#### OFFICERS AND COMMITTEE CHAIRPERSONS

President .....	Richard D. Jones
Vice President .....	Mark A. Nye
Secretary .....	Lynne Verbsky
Treasurer .....	Charles Upton
Sergeant-at-Arms .....	Tarzan Deel
Acquisitions .....	Kelvin Moore
Budget & Finance .....	Dennis Snyder
By-Laws .....	Bud Walker
Corresponding Secretary .....	Charles Upton
Long-Range Planning .....	Tarzan Deel
Membership .....	Jeff Ross
Museum Expansion/Relocation .....	Willard Kolb
Museum Facilities .....	Carl Beynon, Joe Miller
Museum Interior .....	J.D. Hanes, Marybelle Teters
Non-Glass Items .....	Tarzan Deel
Nominating .....	Joy McFadden
Program .....	Bill Hagerty
Projects .....	Bill Hagerty
Publications .....	Mark A. Nye
Publicity .....	Cynthia A. Arent
Study Group Advisor .....	Marybelle Teters
1998 Convention .....	Mark A. Nye, Bud Walker
1998 Auction .....	Lynn M. Welker, Joe Andrejcek
1998 Glass Show .....	Mary Beth Hackett, Joy McFadden
1998 Flea Market .....	Bud Walker
<i>Crystal Ball</i> Editor .....	Lorraine Weinman
<i>Crystal Ball</i> Circulation Directors .....	Lisa and Mike Neilson

National Cambridge Collectors Inc. owns and operates the **Museum of Cambridge Glass** at 9931 East Pike Road, Cambridge, Ohio. Open April through October 9AM-4PM Wednesday through Saturday and Noon-4PM on Sunday. March open Friday-Sunday. Closed November-February, Easter, July 4th.

## ADVERTISING RATES

### Display Rates (camera ready ads preferred)

Unit	Members	Non-Members
Full Page	\$45.00	\$60.00
3/4 Page	\$35.00	\$50.00
1/2 Page	\$25.00	\$35.00
1/4 Page	\$15.00	\$25.00
1/8 Page	\$10.00	\$15.00

### Classified Rates

10 cents a word \$2.00 minimum

Abbreviations and initials count as words. Type sizes cannot be mixed in classified ads. **Payment in full must accompany all ad copy.** Contact Editor for copy assistance.

### Dealer Directory

Six Line Maximum \$24.00 for 12 month contract

---

Cambridge *Crystal Ball* assumes no responsibility for items advertised and will not be responsible for errors in price, description, or other information.

**Advertising copy, letters, articles, must be received by the 5th of preceding month to be considered for publication in the next issue.**

Please address all correspondence (include SASE) to:  
(or E-Mail 76161.3164@compuserve.com)

**National Cambridge Collectors, Inc.**  
**P.O. Box 416**  
**Cambridge, OH 43725-0416**

President Rick Jones 914-631-1656  
or E-Mail Caprice0@aol.com  
Vice President Mark Nye 517-592-3578  
Secretary Bud Walker 609-965-2413  
NCC Museum: Phone and Fax 614-432-4245

**Please notify us immediately of any address change.**

Opinions or information stated in any signed article or letter printed in the *Crystal Ball* are those of the author and may not agree with National Cambridge Collectors, Inc. The Editor reserves the right to refuse and to edit any material submitted for publication to conform to the editorial style of the *Crystal Ball*. Members are encouraged to write to NCC and the *Crystal Ball* sharing their knowledge and questions!

## President's Message

# *NCC Establishes Endowment Fund*

In the September *Crystal Ball* some of you may have noticed on pages 9 and 10 some small print text about the Endowment Fund of NCC. These are the official guidelines approved by the NCC Board of Directors at our August 22, 1997, meeting.

I think we took a major step forward as a club with the approval of an NCC Endowment Fund. From what I've heard, at least one other major glass club has such a fund and its proceeds are significant. Interest from this fund meets many of their operating needs.

In my column this month, I want to talk a little about what the fund is, its purpose, and how it works.

An endowment fund helps provide for an enduring future. Its major source of funding is usually wills and bequests, but it also receives cash contributions, including donation dollars that may be otherwise unassigned. The principal of the fund cannot be used, only the interest. Properly invested, the asset continues to grow.

We encourage you to review the legal text of our endowment fund (from the September issue) in case you would like to share it with your lawyer or financial advisor. The full text will also be available at any time on our soon-to-be-released Web site ([www.cambridgeglass.org](http://www.cambridgeglass.org)). We thank Russell Booth for his efforts helping the club and Charlie Upton put these laws together.

What the Board approved is really two programs. First is the Endowment Fund, which is primarily intended for cash, security, or other tangible but sellable assets such as artwork. The second is called the Permanent Collection Program. This is designed for donations of glassware to the NCC Museum.

Any members considering glass donations are asked to provide the same flexibility in their bequest as we have with our Museum Interior guidelines. If a piece duplicates one already owned by the museum, the club would like the flexibility to sell the piece. Proceeds from these sales can be directed to any of our funds that you would like to support.

We are establishing an endowment committee of senior members to work on a confidential and sensitive basis with any member who would like counsel in the creation of their estate planning. It will be chaired by Clarke

West of Springfield, Ohio, who was so instrumental in getting this program off the ground so swiftly. Other charter members will be Bob Ellis of North Carolina and Emil Kleeman of Connecticut. Of course, Charlie Upton and I will be available as well to consult as needed. If you're interested in helping the committee, can you drop me a note at the club office or to my e-mail (see Page 2).

It is important to know that the club now has four funds to which bequests or any other donation can be directed (and you can split among funds):

- Operating Fund
- Museum Fund
- Building Fund
- Endowment Fund

Separate investing strategies are being created by Dennis Snyder and our Budget and Finance Committee to meet the different objectives of the funds (such as long-term growth, cash producing, etc.).

Donations do not have to be directed. We have received very nice undesignated gifts from regional DG clubs, that are initially deposited in our main operating account. Then, the NCC Board of Directors determines where to allocate these funds. Recently many of these have been designated to Acquisitions for the NCC Museum.

I'm very pleased to say that the club is in the best financial shape we've been in for some time. There are several reasons for this:

- Our events have been very successful. Our income from Auction, Mini-Auction, Flea Market, among others, set all-time records in 1997. Book sales have been very strong and we had an all-time high in first-

*(Continued on page 14)*

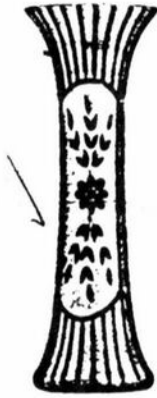
## **1997 Calendar Planning**

Be sure to mark your calendars with this important National Cambridge Collectors, Inc. date. The following is a tentative date for this major club activity during 1997:

**November 8    November Quarterly Meeting**



No. 2360. 12 in.  
Cut 4078



No. 2358  
8, 10 and 12 inch  
Cut 4078



No. 2361. 10 in.  
Cut 4078



No. 2357  
6 and 8 inch  
Cut 4078



No. 2360. 10 in.  
Cut 4078



No. 2366  
8, 10 and 12 inch  
Cut 4078



No. 6004  
8, 10 and 12 inch  
Cut 4075



No. 2366  
8, 10 and 12 inch  
Cut 4075



No. 2354. 10 in.  
Cut 4075



No. 2355. 10 in.  
Cut 4075



No. 2356. 10 in.  
Cut 4075



No. 2800/209. 9 in.  
Non Splash Auto  
Cut 2187



Bud Vase  
10 and 12 in.  
Cut 4078



10 in. Bud Vase  
Cut 884



No. 2356. 10 in.  
Cut 2057



No. 2355. 10 in.  
Cut 884



No. 2354. 10 in.  
Cut 887

MADE  
"Mearcut"  
MADE



No. 2361. 10 in.  
Cut 4098



No. 2364. 6 in.  
Cut 4098



No. 6001. 9 in.  
Cut 2057



No. 6000. 9 in.  
Cut 2



No. 6006. 6 1/2 in.  
Cut 1097



No. 1633. 8 in.  
Cut 844



# Cambridge in the 1920s

## Part II

by Mark Nye

"Living up to the reputation gained when they introduced the 'Azurite' and 'Ebony' glass last year, the Cambridge Glass Co. comes forward this year with some unusual originations in colored ware as well as additions to former lines. The display in Room 728 at the Fort Pitt is one of the most colorful and attractive showings of glassware ever seen at the Pittsburgh Exhibit. Leading the offerings in colored ware--and the color runs clear through as it is a body color--are the new 'Primrose Yellow,' 'Helio,' and 'Carrara.' In color selections and shapes as well as choice of decorations, the new colors are worthy of the Cambridge line. The 'Primrose Yellow' is just what the name implies, a yellow of warmth and volume but not extreme. There is a great variety of shapes ranging from small vases to vases suitable for lamp bases. There are several decorations in gold and also in white gold. The latter is somewhat of an innovation. It has the appearance of silver, but, unlike silver, it does not tarnish. There are also several narrow band decorations in green, blue and black treatment. <The latter decorations were most likely enamel encrusted border etchings.>

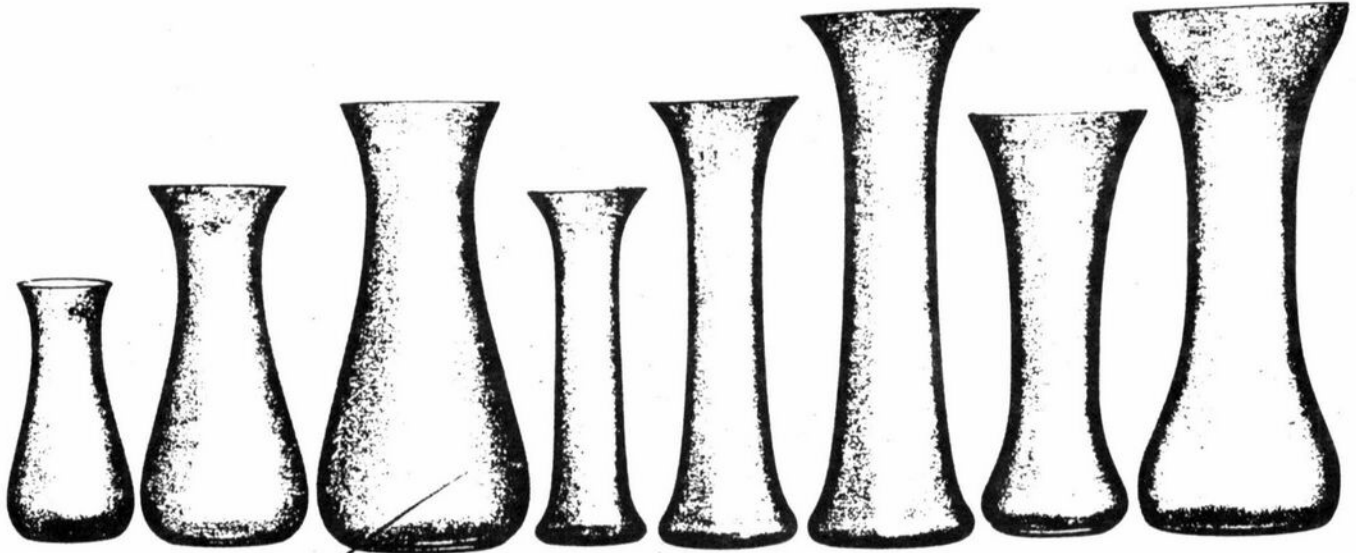
'Helio is the name of an exceptionally attractive color. It is of the purple family, but delicate in tone and very rich in appearance. The shapes in this color are extensive in number and there is a choice of decorations as wide as that in the 'Azurite' and 'Primrose Yellow.' The 'Carrara' is a brilliant white and stands in strong contrast to the deep-black 'Ebony.' This colored ware is especially attractive with gold decorations and a number of ideas in this connection are shown. A large number of new pieces have been added to the 'Ebony' line, making this line one of the most extensive ever offered the trade. Some new decorative conceptions also are shown. One of the new things in the colored glass is a smoking tray, consisting of a tray with match-box holder in the center and three receptacles for ashes all of which are moveable. In crystal, the Cambridge Glass Co. is offering some new ideas in gold bands and encrustations as well as some new etchings and light cuttings." CGL January 15, 1923.

"An extensive line of salad plates in colored glass recently has been added to the lines of the Cambridge Glass Co., Cambridge, O. The plates come in 'Ebony,' 'Azurite,' 'Helio,' 'Primrose Yellow' and in new shades of topaz, light green and mulberry. Made of colored glass, the plates have both plain and star bottoms. The

Cambridge factory offers the plates in plain colors as well as in decorations such as contrasting colored edges and in light cuttings and gold encrustations. In stemware, the Cambridge line has been increased by additions in colored glass. The new shades are topaz, light green and mulberry. The most wanted shapes come in the new colors, which should be of interest to those desiring something new and attractive in stemware." CGL May 14, 1923. <The "light green" is what we today call Light Emerald.>

"When such a wealth of beauty as in the display of the Cambridge Glass Co., of Cambridge, O., stares the reporter in the face, it is hard to pick the most distinctive things to write about. The Cambridge display is in Room 728 at the Fort Pitt Hotel. Here was a compote set in Azurite, that lovely bright blue, done in the Wedgewood manner, with the embossment and the ram's head handles we have always associated with the Wedgewood earthenware pattern known as Belmar. Candlesticks with square top and base match the bowl. Here also was a mottled gold and colored line in five colors, with gold edge line on all pieces, and a black glass base for some. Especially good was a line of black glass with gold encrusted fleur de lis design in wide bands, and some black vases with encrusted gold border an inch and a half wide. Perfume bottle of cut crystal in colored optic and others with gold encrustation, all with long stoppers have been selling most satisfactorily. Since we haven't one, we were told we must be the only woman in the world who hasn't. A new line of amber glass, deep and rich in tone, is offered for the first time. This is flat ware, and the pattern looks like very wide optic, but is pressed into the flange of the bowl. There is a very complete line of mulberry, topaz and emerald glass, of candlesticks, jugs, bowls, tumblers and stemware that is colorful and interesting. A very comprehensive line of colored glass salad plates made us wonder why salad was ever served on any other sort of plate, for the pale green of lettuce would enhance the value of these colors, and the glass would make the salad all the more tempting. These plates match every style of glass ware they make. Another interesting pattern in colored glassware had reserves in the gold border where flowers of the undecorated glass

*(Continued on page 7)*



No. 2357  
6 inch

No. 2357  
8 inch

No. 2357  
10 inch

No. 2358  
8 inch

No. 2358  
10 inch

No. 2358  
12 inch

No. 2360  
10 inch

No. 2360  
12 inch

79

78

83

82

81

80



No. 6011  
8 inch

No. 2359  
9 1/2 inch

No. 2368  
8 inch

No. 2368  
10 inch

No. 2368  
12 inch

No. 2367  
8 inch

No. 2367  
10 inch

No. 2367  
12 inch

76

75



No. 1633  
8 inch

No. 6006  
6 3/4 inch

No. 2362  
6 inch

No. 2364  
6 inch

No. 6000  
9 inch

No. 2361  
9 1/4 inch

No. 6001  
9 inch

No. 6001  
12 inch

(CAMBRIDGE IN THE 1920s - Continued from page 5)  
showed through. The various matching items are available in many colors." CGL January 14, 1924

"The Cambridge Glass Co. has some new refreshment sets of glass decorated in gold encrustations. The colors in which these are made are transparent blue, green and amethyst. Reproduced in gold encrustations on the rim are Mah Jong tiles. Two more gold tiles appear on the sides of the sherbets. Three Chinese characters appear in gold on one side of the bottom of the plate, opposite the indentation for holding the sherbet glass, gold edge lines complete the decoration. The same design is used in ice tea sets and in boudoir sets. All of these are ready for Christmas business. The samples arrived in New York only last week." CGL November 17, 1924

"Living up to its reputation of introducing each January most interesting developments in table and decorative glassware, the Cambridge Glass Co., of Cambridge, O., has on display in room 728 at the Fort Pitt Hotel unusual lines in block optic and a new color glass called 'Rubina.' The block optic in the 'Rubina' and new transparent colors, plain and decorated, are among the outstanding offerings in glassware. In 'Rubina Glass,' which can be had both plain and in block optic, new shapes in comports, bowls, vases, candlesticks and other pieces have been developed. Especially attractive is the refreshment set in block optic 'Rubina.' The new glass is not one color but a natural three or more tone glass in which the predominating shades are red, green and blue, each tone diverging into the other. Another new glass is the 'Onyx' which is a light tan shade with or without decorations. In specialties there is an assortment of oval shapes, oval cheese and cracker, oval sandwich tray, oval sugar and cream, and oval candy box. Other things are boudoir sets and two piece party sets, both oval and round in crystal and transparent colors, and gold encrustations; an owl lamp, new glass lamp bases in assorted colors and shapes; transparent glass aquariums with ebony feet; console sets in wide variety and wine sets in transparent colors. A striking novelty is a wine set which consists of a black tray bearing a keg shaped container with a nickel plated spigot on a rustic stand and which is completed by six rustic glasses. In stemware and tumblers there is a wide choice in transparent colors, plate etchings and gold encrustations and other treatments. There is also a wide assortment of cologne bottles in varying colors and sizes and a very complete display of decorated and plain salad plates which have been a very popular number with this factory." CGL January 12, 1925

(To be continued)

For illustrations of many of the items referenced in this article, especially those from 1925 and after, the reader is referred to the 1925-1929 Cambridge Glass Co. catalog as reprinted by the late Bill Smith and his wife Phyllis.

This reprint is available through N.C.C., Inc. The two catalog pages accompanying this article are from Cambridge Catalog #10, issued circa 1920. The paste mould vases are those referred to in the quote from the January 15, 1923, issue of CHINA, GLASS AND LAMPS (referred to previously as CGL). The cuttings shown on the page captioned "Cut Vases" are typical of the light cuttings from the early 1920s.

The breeze that moves the tree limbs  
Paints a picture on the wall,  
A shadow that loves the colors  
Of leaves that brighten fall.  
Even the pine's stark needles  
Cast a solid mass of gray  
Except for spots of sunlight  
Woven into fancy crochet.  
God given eyes will notice  
Things the sunlight has drawn  
Until the peace of evening  
Closes them when light is gone.  
Joy comes from each of the senses  
Our life would be drab without,  
Thank Him for this awareness  
All praise for the beauty about.

*Paul E. White*

## Nearcut Book Now Available

This 108-page reprint of the  
1910 Cambridge Catalog  
is now available for \$14.95 plus  
postage and handling (first book, \$3.00;  
each additional book, \$1.00).

See the NCC address on Page 18 to order  
your book.

## Near Cut Find

# The Jug with the Hidden Trademark

by Joseph A.A. Bourque Sr.

Dear Reader,

In 1970, I had occasion to note a small Near Cut Cambridge Glass 4-oz. handled cologne No. 110, depicted in a Cambridge Catalog reprint. (See Figure 1 - Welker I-116)



FIGURE 1

Since I had taken a fancy to small collectibles, I locked this item in my mind, hoping for the day I would find one. Twenty-five years later, an article appeared in the *Crystal Ball*, (March '95 issue) referring to a small Near Cut jug. It was written by Bud Walker.

Walker wrote that it bore a Near Cut signature inside the jug. Having not seen, heard, nor read about this before, I found it most interesting. He went on to say that his friend Willard Kolb had informed him that in order to make such a jug, it required a certain device called a "Cut-Shut" mold. The 1910 Nearcut Catalog Reprint - 84 shows a little 4-oz. jug No. 2669 (See Figure 2). It appears to be the same as the 4-oz. handled cologne.

I attended our NCC Convention '97, and made it a point to see Bud Walker and Willard Kolb about this hidden signature inside a jug. I met Willard after not having seen him for over 20 years, and he explained to me how the Cut-Shut method worked.

Now bear in mind that I had been looking for this elusive jug and/or handled cologne for over 25 years, with negative results. As Willard and I parted that evening, I told him jokingly that since he had given me all the data he had on the Cut-Shut jug, I would go our first thing in the morning and find one. We both laughed at this as we parted company.

The next morning, I read my daily agenda. Heading the list was: "Visit Harold and Judy Bennett - Shop & Museum." So off I went to Judy's Antique Shop. It was good to see Judy Bennett again after such a long time. We talked a bit. She informed me that Harold would be across the street (his Cambridge museum) in a short while.

As my eyes darted about the numerous pieces of Cambridge glass treasures, they stopped and gazed in wonder at a pressed-cut miniature handled jug. I actually became awestruck as I gently picked it up from the shelf, suddenly releasing years of pent-up search and pursuit. At long last I had found this select Cambridge miniature. (See Figure 3)

It was baffling. I waited 27 years to find this little jug, yet after only a short 12-hour time period of being told what

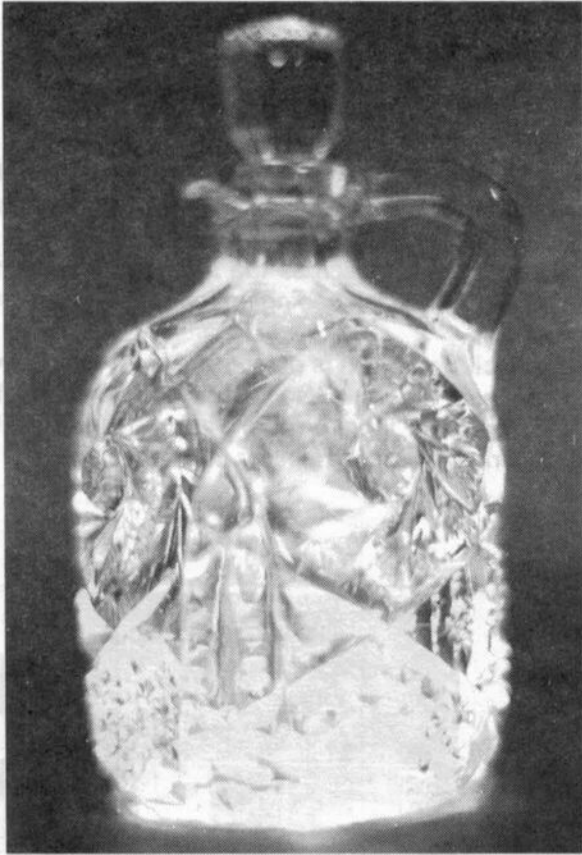
*(Continued on page 9)*



FIGURE 2



(HIDDEN TRADEMARK - Continued from page 8)



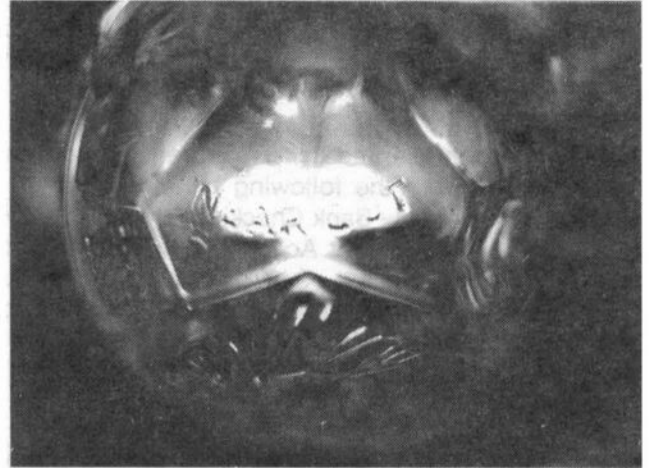
a Cut-Shut little jug would look like by Kolb and Walker, I came up with this little gem with stopper. I made several other purchases, but all were secondary compared to my little jug.

I eventually crossed the street, met Harold Bennett, and chatted for about a good hour about old times. One interesting thing he told me was that he owned the Cambridge trademarks. I had visited Harold Bennett two or three times in the early '70s when he was running the Guernsey Glass Company. I recall that he had made some items bearing the Near Cut trademark. One of these items was a large pink slag pitcher in the Strawberry pattern. I informed him that I still had one of these with the six tumblers, all signed Near Cut. He offered to buy the set from me. "Not right away," I retorted. I mentioned the little Near Cut jug. We looked for one but could not find it on display. We parted company, and I went to my room.

The first thing I unwrapped was the jug and stopper. Then, two nice things happened. I suddenly realized that the jug was too small to contain four liquid ounces. In searching through my Nearcut book, just under the description of the 4-oz. jug, it stated: No. 2675, **2 oz. Jug**. The smaller, the better, I thought. (See Figure 2)

I have since measured it for contents, and it holds two liquid ounces.

As I was checking out the pressed-cut designs of the jug to see if they matched those shown in the catalog, I saw some printed letters on the jug. A closer look proved them to be **inside** this little jewel of a jug, and they read **NEAR CUT**. I was alone, but I shouted "Eureka!"



I had been under the impression that the Near Cut signature would be on the inside bottom of the jug. It was signed just below the neck, running parallel to the collar. (See Figure 4)

That evening, I showed my new find to Willard Kolb and Bud Walker. They showed great interest, and verified it to be a Cut-Shut item. I had, miraculously so, kept my promise to find that Cut-Shut jug with the hidden signature that morning.

At a later time, I will attempt to tell and show you how the Cut-Shut method works.

Until next time,

Joe

Have any questions or comments that you would like to share with the NCC membership?

Please write! We would like to hear from you.

# August Quarterly Meeting Minutes

## August 27, 1997

by Lynne Verbsky

President Rick Jones called the meeting to order at 1:00 p.m. The members voted to waive the reading of the June annual meeting minutes and to accept them as published in the *Crystal Ball*.

Charles Upton presented the Treasurer's Report as of July 31, 1997, with the following balances: Cash on Hand, \$400; Guernsey Bank Checking Account, \$19,694; E.F. Jones Money Market Account, \$12,037; Custodial Account: Miami Valley, \$487; Custodial Account: Acquisitions, \$2,925; Certificate of Deposit: Principal, \$61,000; Certificate: Accrued Interest, \$6,894, and the Templeton Worldwide Fund, \$37,473; for a total of \$140,910.

Further discussion pointed out that the contribution margin for our operating expenses has increased over last year as a result of our fundraising efforts and our keeping expenses under control. Both the mini-auction and the March auction were the biggest we've ever had, although the profit from the March auction was a little bit lower than last year. Last year there were more 100% donations.

The following committees had reports or discussion:

**Long-Range Planning:** Tarzan reported that our internet site is not quite complete, but Don is moving right along with it. There is some copy work to be done on the pages. Even though it has not been publicly released yet, we may view it now at [www.cambridgeglass.org](http://www.cambridgeglass.org). Tarzan also stated that the Long-Range Planning committee will be announcing some things soon.

**Membership:** Jeff reported that we have 949 master members, 393 associate, five honorary, and four lifetime, for a total of 1,351. We picked up 12 new members at the convention and four or five at the Great Northeast Show. We are up by 25 - 30 as compared to last year at this time.

The regional membership program has no progress at this time, but there are some possibilities. There are members on the West Coast who are interested in helping out with a book table at shows in that area. We need to get some inventory out there.

Rick was approached at the Northeast Show by a regional club who might like their efforts next year to benefit the NCC Museum.

**Museum Expansion/Relocation:** Willard reported that the land behind the storage building has not been sold yet. The four acres in the back that we would like must be sold with the wetlands across the road that we are not interested in. Willard is keeping on top of the situation.

**Museum Facilities:** Carl is planning a study group work day in the near future. We all thanked Carl for the mulching, and we thanked Carl and Shirley for the beautiful work they did on painting the sign!



**Museum Interior:** Lynn reported that we need cases, and that the insurance appraisals are being worked on. After the convention donations have been added to the list of museum-owned glass, he will be able to print a list for anyone who is interested.

**Non-Glass Items:** Tarzan thanked everyone who worked before the picnic clearing out boxes and organizing catalogs and books.

**Program:** Bill announced that our next meeting will be November 8 at 5:30 p.m. at the Cambridge Country Club, and the dinner will be \$15.50 per person. He is planning a program featuring Caprice with unusual examples from permanent collections. Bill would like everyone to bring their beautiful and unusual pieces.

(Continued on page 11)

(MEETING MINUTES - Continued from page 10)

**Projects:** Bill reported that out of the 500 pairs of salt and pepper tops, 223 pairs have already been sold. The price is \$6 per pair for 1 - 9 pairs and only \$5 per pair when buying 10 pairs or more. They fit Rose Point, Caprice, Chantilly, some Candlewick, Heisey Rose, some Orchid, Plantation, and some Hazel Atlas.

Kelvin brought up an idea to reprint the Cambridge factory layout that is on display in the NCC Museum. It could be printed as a poster on heavy paper and sold, possibly as an NCC Silver Anniversary Edition to raise money for the Museum. We are going to investigate whether it could be reduced a little and still be easily read. I'm sure there would be many of us who would love to have this poster at home!

**Publicity:** Cindy reported that we will continue to advertise in the Ohio Pass magazine, which can be obtained for free by calling 1-800-BUCKEYE. Cindy also mentioned that the committee will be working on ways to boost Sunday attendance at next year's glass show.

**Study Group Advisor:** Marybelle was absent, but it was reported that the NCC Board approved the *Project Standards and Procedures*, project guidelines for study groups which can be applied to a book or to any project. We will ask Marybelle to send a copy to each study group.

**1998 Auction:** Lynn will accept lists of glass from September 1 through October 1.

**1998 Glass Show:** As Cindy mentioned in the Publicity report, we are working on ways to increase the Sunday attendance.

**1998 Flea Market:** Cindy reported that it will be held in the same place, especially since the dealers like it.

**Crystal Ball:** Lorraine reported that contributions are always welcome. Discussion followed about the etching in last month's issue; the nude figure and who had it first, Cambridge or Farber; and the Tomahawk mold. These will be mentioned in the September issue.

**Old Business:** The Endowment Fund copy has been finalized. We also discussed lifetime membership and that there was no provision for this in our constitution. Tarzan will clarify whether this is covered under Robert's Rules, and the proposed change will be published in the September *Crystal Ball* so we may vote on it at the November meeting if necessary.

**New Business:** Rick read a letter from one of our members, David Adams, from Our House Antiques in California. The letter stated that David likes the direction in which the NCC is going compared to other glass organizations, and that we are interested in what all of our members think. David also suggested that the NCC

should have an e-mail address, and he asked us how to order the etching book. We discussed the e-mail address and publishing a statement in the *Crystal Ball* that we would not be able to give out prices for glass.

With no further business to discuss, the meeting was adjourned at 1:45 p.m.

Respectfully submitted,

Lynne R. Verbsky  
Secretary

## Salt & Pepper Tops For Sale

Plastic tops to fit most Cambridge, such as Rosepoint ftd. and flat-bottom shakers. Also fit Heisey Rose, Saturn, Plantation, Crystolite and some Orchid.

Fit some Anchor Hocking and Candlewick. (CAUTION - do not force on as they will crack) Made of polycarbon, the same material used to make taillight lenses for autos.

Price: 1 to 9 pairs @ \$6 per pair  
10 or more @ \$5 per pair

ON SALE NOW AT THE NCC MUSEUM

When a sliver of evening moon  
Chases the stars from the sky,  
That's the time to consider  
What's been done, what's still to try.  
The twilight settles around you  
It's a sentimental aura, too,  
The schedule that filled the daylight  
Is done, and choices are new.  
You and the ones who are sharing  
The free life still to come  
Cooperate with the spirits  
Of those whose earth time is done.  
Sleep, now approaching will augment  
The dreams shown from the past  
And the time remaining can surely  
Be enough to complete the task.  
Fill each day to overflowing  
With things you always planned to do.  
For satisfaction, not regret  
Will follow, when life is through.

Paul White

# SIX RINGS

by Bud Walker

I never cease to marvel at the amount and variations that the Cambridge Glass Company came up with. When you begin to think that you know most of the pieces this company made, something that you have never seen before pops up. This happened to me at last year's auction. There was a bowl the likes of which I had never seen. It was amber in color, and an odd shape for a piece of Cambridge. This strange bowl had six rings on the inside surface. If it weren't for the Triangle C, I would have argued that it couldn't have been made by the Cambridge Glass Company.

There was very little interest in this unusual piece and we were able to purchase it at a reasonable price. But, that was not to be the end of the six ring story. Early in the spring, we received a call from a friend who was selling some of her mother's glass. She knew that I was interested in Liberty Glass. Knowing that several members of her family worked at the Liberty Works, she wanted me to take a look at what she had. If it was Liberty, she wanted someone who would appreciate it and not a dealer to be the new owner. When we went to look, she had several pieces of Liberty, and low and behold, there sat an amber six-ring bowl. The big difference in this bowl was that it had a cutting on the outside of the bowl. In trying to identify the cutting, it appears to be a variant of the Rock Crystal engraving 642. This new bowl

also has the large Triangle C in the bottom. If we can find the original piece, Charles Upton will have a piece of six rings for his collection.

One new find will often be followed by a second. This happened to us last week. A dealer called to tell us that he had found some nice Cambridge. Being a confirmed glassaholic, we had to see what they had. We ended up purchasing several lovely pieces. As we were about to leave, his partner asked if we would be interested in some Caprice stems. I told him that we didn't collect Caprice. His answer to this was that he had some painted stems we might like. I couldn't imagine what they could be. As it turned out, he had 11 #3122 cocktails. They had red pinstripe on the foot and also on the bowl. In addition to this decoration, they had a black circle with a number in it. The stems were numbered 1 through 12, with Number 2 missing. According to the dealer, they were purchased locally years ago. I can't help but wonder if they were something made special for the Bennett-Orrne family. I have learned that when you are told that someone has an unusual piece of Cambridge, you will probably be sorry if you don't take the time to look.

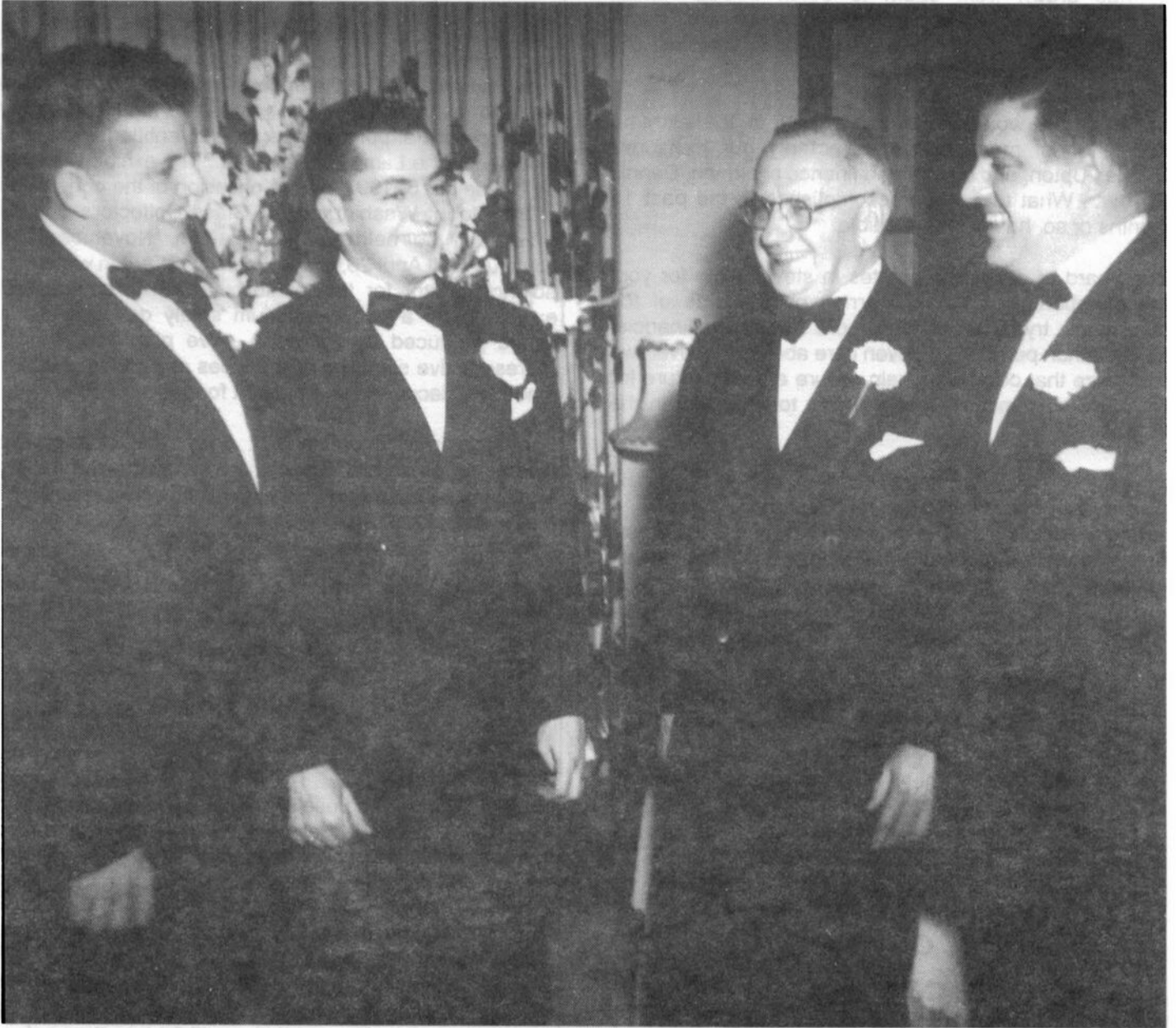
If anyone has any information about the six-rings line or the painted #3122 stems, please let us know.

**REGISTER NOW  
FOR THE  
NOVEMBER 8  
QUARTERLY MEETING**

**(See Page 20)**



# A Glimpse Into the Past



**Wib - Bill - Wib Sr. - Bud**

**(PRESIDENT'S MESSAGE - Continued from page 3)**

time convention attendees this year. We are starting to increase our club's visibility and it is paying dividends.

- Expenses are being watched closely, but we're not being penny wise, pound foolish.
- Moneys are being invested wisely. Our Building Fund has grown from \$25M to \$37M through smart investing. Our operating accounts are being reallocated into better interest-bearing vehicles. All in all, it's paying off.

None of this would be possible without the extreme dedication of many members, notably our treasurer, Charles Upton, and budget and finance chairman, Dennis Snyder. What they have accomplished in the past 15 months or so, has been incredible.

The board of directors operates in stewardship for you, the membership. We are erring on the side of full disclosure, trying to tell you more about our financial position than perhaps you even care about. However, we recognize that our assets help assure a strong future for NCC; it's your money, and we want to keep you in the loop.

All of this helps us to succeed in our mission, the preservation and education of Cambridge Glass. A strong financial position is critical to this, and to the dream of an expanded museum facility in the not too distant future.

**Think of what you  
can do  
with what there is.**

**Ernest Hemingway**

# News Releases

## SHADES OF OPULENCE The Lamps of Pairpoint

November 7, 1997 - April 26, 1998

To continue its in-depth study of the Glass Industry in New Bedford, the Old Dartmouth Historical Society - New Bedford Whaling Museum plans to mount a major exhibition of Pairpoint Lamps this fall entitled Shades of Opulence: The Lamps of Pairpoint. The exhibit will open on November 6, 1997, on the occasion of the convention of the Mount Washington Art Glass Collectors Society which will be held at the Museum, November and continue until April 26, 1998. Louis O. St. Aubin will act as adjunct curator for this exhibit. This will be the first exhibition by a public museum solely devoted to the lamps produced by Pairpoint. We plan to gather a representative sampling of the types and styles of lamps made and decorated by Pairpoint for this occasion.

For further information, contact: Judy Lund, Curator, Old Dartmouth Historical Society - New Bedford Whaling Museum, 18 Johnny Cake Hill, New Bedford, Massachusetts 02740-6398.

~~~~~

## NEW EXHIBITION HIGHLIGHTS THE ART OF "FLAMEWORKING"

MILLVILLE, NJ - The use of an intense flame to melt and manipulate glass rods or tubing was historically called "lampworking." Today contemporary glass artists refer to this art form as "flameworking."

The 1997 Museum of American Glass annual exhibition, "Contemporary Flameworked Glass," now through October 26, is the first international show organized on the subject. Renowned glass artist Paul J. Stankard is the guest co-curator. The exhibition will feature the work of over 20 international glass artists who exemplify excellence and innovation in the field of flameworking. The objects on view will range from beads, vases and goblets to paperweights and sculptures.

For more information about the show, call 1-800-998-4552 or 609-825-6800, Ext. 2746 or 2747. E-mail address: [mail@wheatonvillage.org](mailto:mail@wheatonvillage.org). Also visit Wheaton Village at its web site: <http://www.wheatonvillage.org>.

# NATIONAL STUDY GROUP REPORTS

## Study Group #16 Elegant Glass Collectors

On August 9, 1997, the Elegant Glass Collectors met at the Greater Northeast Depression Era Glass & Pottery Show at the Westchester County Center in White Plains, NY. The members present included: Pam Earussi, John Corl, Windsor and Laura Tracy, Don and Bonnie Stevens, Brad and Denise Bernstein, Ken and Jane Filippini, Charles and Loretta Weeks, Steve Taylor, and Amy Weinstein.

We toured the glass show, with some of our members assisting at the show - Don and Bonnie Stevens, John Corl. Charlie and Loretta were set up as dealers in the show, as well as Rick and Cindy Jones, Florence and Joe Solito, Lydia and Cliff McNeill, Jim and Leora Leasure. We met in the parking lot for a picnic lunch, and had Show and Tell. We also discussed what we could do as a study group for the club as a project. There was so much beautiful glass, it was overwhelming. There was a display table of glass manned by Tarzan Deel, along with the club's books for sale. Our next meeting will be September 26th at Charlie and Loretta Weeks' house in Denver, Pennsylvania.

- Submitted by Pam Earussi

## Bogart's Bed & Breakfast

62 W. Main Street, New Concord  
New Concord lodging in 1830 Federal  
Style home, decorated with  
antiques throughout.



## Bogart's Antiques

7527 E. Pike, Norwich OH  
Quality Antiques Bought & Sold

OWNERS: Jack & Sharon Bogart  
872-3514 or 826-7439

## CAMBRIDGE GLASS FOR SALE:

### RARE FIND! SWAN PUNCH GLASSES

Cambridge **Swan Punch Glasses**, most with new Cambridge sticker still intact. Eleven available. All in mint condition. \$100.00 each.

### CAMBRIDGE FLOWER FROGS

**Draped Lady**, 9" in green, crystal, pink, light amber, and dark amber: \$150.00 each

**Draped Lady**, 9" pink, oval base: \$150.00

**Draped Lady**, 13" crystal: \$200.00

**Two Kids**, 9" crystal: \$175

**Bashful Lady**, 7" crystal: \$135

**Heron**, crystal, 9": \$150, 12": \$200

### CAMBRIDGE ELEGANT ETCHED #520 SET

Cambridge pattern 520 elegant etched green glass, complete 115 piece set with many rare items, all in mint condition. List of items upon request. Very rare pattern. Packing and Shipping available. Complete collection for \$1,250.00

All of the above FOB Ann Arbor, Michigan.

*Offered from the private collection of:*

Michele Kluwe, PO Box 84, Manchester, MI 48158

Telephone: 313.428.2000

Fax: 313.428.1000

## WE CLEAN CLOUDY GLASS! SATISFACTION GUARANTEED

**Yes, it is true** that we really can restore the interior of your cruet, vase, decanter and other *internally* etched items back to near original condition!

**We do not** oil, wax or cover up the sickness in any way! We actually **remove** it.

**No items are too sick to clean!** If we cannot clean an item to meet your satisfaction, the cleaning is **FREE!**

**Send no money up front.** When we return your item a bill will be enclosed for the postage and cleaning. If you are not satisfied, only the return postage is requested.

**Most items** clean in 6-8 weeks. All glass is handled and cleaned at your risk. Some very cloudy items may take several additional weeks.

|                   |         |                    |            |
|-------------------|---------|--------------------|------------|
| Cruet             | \$20.00 | Cocktail Shaker    | \$30.00    |
| Vinegar & Oil     | \$25.00 | Salt Shaker (one)  | \$15.00    |
| Cologne           | \$20.00 | Salt Shaker (pair) | \$25.00    |
| Decanter          | \$30.00 | Water Bottle       | \$30.00    |
| Vases (under 12") | \$25.00 | Lavender Jar       | \$20-30.00 |

Ship to: **Kim Carlisle & Associates**  
28220 Lamong Road, Dept. C  
Sheridan, IN 46069  
(317) 758-5767

# Recent Finds

We really appreciate hearing about and seeing what other people are finding. Please let us know about your recent finds. It's always great to see pictures of your finds as well!



3900/72 2 Lite in Smoke



3121 Candelabra w/Silver Base



Crown Tuscan 11" Vase w/ Gold-Encrusted Portia



The  
**DAZE** Inc.

**SPECIAL OFFER**  
to NCC friends  
**\$2.00 OFF**  
the 1 year subscription price  
when on this form or copy of it.

The Original National monthly newspaper dedicated to the buying, selling and collecting of American made glassware china, and pottery from this century. We educate and inform you each month with feature articles by top notch writers, readers letters, club happenings, reproduction news, show reports and there are hundreds of dealers to help you fill in the missing pieces of your collection. "Keep up with what's happening" . . . Subscribe today!

Name \_\_\_\_\_

Street \_\_\_\_\_

City \_\_\_\_\_

State \_\_\_\_\_ Zip \_\_\_\_\_

1 year \$21.00    2 years \$40.00    \$2.00 Single Copy

**Subscription Hot Line: 1-800-336-9927**

Exp. Date \_\_\_\_\_ Card No. \_\_\_\_\_

Signature \_\_\_\_\_

**Orders to:**

**The Daze, Inc., Box 57, Otisville, MI 48463**

Please allow 30 days for your first issue - Canadian Subscribers, add \$1.00 per year and subscribe by charge card only! This Special Offer may not be combined with any other special offer.

Offer Expires December 31, 1997



## Stems Without Thorns

As the world's largest supplier of discontinued and active china, crystal, flatware and collectibles, Replacements, Ltd. has over 325 different patterns of Cambridge crystal.

And however much we enjoy selling pieces which were once thought irreplaceable, we love buying them as well. Thanks to people like you, our crystal inventory currently numbers in the hundreds of thousands, and the numbers keep growing every year.

So, if you've been unsuccessfully searching for that elusive piece of Cambridge - or any other type of fine crystal - call us for a free list of pieces available in your pattern. And, if you're looking to sell pieces you currently have, we can help you there, too.

## REPLACEMENTS, LTD.

*China, Crystal & Flatware • Discontinued & Active*

**1-800-REPLACE**  
(1-800-737-5223)

1089 Knox Road,  
PO Box 26029, Dept. CB,  
Greensboro, NC 27420

**\*\*\*\*\* CONTEST \*\*\*\*\***

## CONVENTION: FLEA MARKET 1998

The name "flea market" is no longer applicable to the merchandise shown at the "flea market" held during the Convention. We need a name that better describes the five-hour extravaganza that takes place in the gym. So, a contest is in order. The contest started last month and will end January 31, 1998. Any member can submit as many names as he or she can think up. If more than one person comes up with the name that is chosen, the earliest postmark will determine the winner. Mail entries to National Cambridge Collectors, Inc., P.O. Box 416, Cambridge, Ohio 43725-0416. We are asking NCC members to come up with a better name. If your name is chosen, you will win a free ticket to the Early Bird Special. Early Bird tickets are \$10. If you win, this will enable you to spend an extra \$10 at the show.

**ENTER NOW !!!!!**

# ~ GLASS ~ MARKETPLACE

## Classifieds

**WANTED:** Rare or unusual pieces of Cambridge Glass Especially Opaques or Carnival. Also Cambridge Art Pottery. Top prices for outstanding pieces. **Call collect 609-965-2413.**

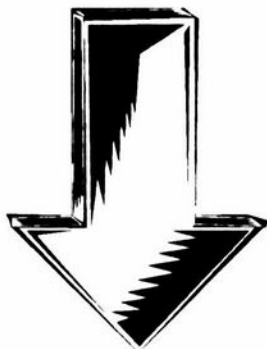
**WANTED:** Hard to find Rose Point, Rose Point #3106 stems, Nude stems, and novelty items. Write price and description. **Nancy and Jim Finley, 711 West Broadway, Sedalia, MO 65301. Phone (816) 826-5032 or 827-0101.**

**WANTED:** At least two Lt. Blue prisms for Caprice candleholders. PLEASE HELP, **B. BRASELL, P.O. Box 502, Thomasville, AL. 1-334-636-5498.**

**WANTED:** Scotty bookends, Cambridge or Imperial, any color, singles or pairs. **Lesley Connor, 610-791-1185, 4800 Highland Way, Center Valley, PA 18034**

**FOR SALE:** Cambridge Rose Point, 250 pieces Stemware, cup saucer, plates 9 1/2, 8 1/2, 7 1/2 and more. **Dorothy Godbey, 117 Hearthstone Dr., Fayetteville, NC 28314. 910-867-8922. UPS insurance Extra.**

LOOK  
WHAT'S  
NEW



### BOOKS ALSO AVAILABLE FROM NCC, INC.:

**Nearcut**

108-page reprint of the 1910 catalog \$14.95

*by NCC, Inc.; Miami Valley (Ohio) Study Club*

**Etchings by Cambridge, Vol. I**

84-page book of samples of plate etchings applied by the Cambridge Glass Company

## CAMBRIDGE GLASS BOOKS FOR SALE

*by National Cambridge Collectors, Inc.*

**Colors in Cambridge Glass**

128 pages, 60 color plates, fully indexed.

Hardbound with price guide \$19.95

**1930-1934 Cambridge Glass Co. Catalog Reprint**

250-page reprint of original catalog.

Paperback with price guide \$14.95

**1949-1953 Cambridge Glass Co. Catalog Reprint**

300-page reprint of original catalog.

Paperback with price guide \$14.95

**1956-1958 Cambridge Glass Co. Catalog Reprint**

160-page reprint of original catalog. Paperback \$14.95

**Cambridge Caprice**

200-page book illustrating the most popular line of Cambridge Glass.

Lists color, decorations, reproductions and rare pieces.

Paperback with value guide \$19.95

**1940s Cambridge Glass Co. Catalog Reprint**

250-page reprint of original catalog and all known supplemental pages.

Drilled, ready for placement in your own three-ring binder.

Due to its size, the reprint does not include a value guide. \$34.95

**The Home of "Near-Cut" Factory Post Card**

50 cents each

**Crystal Lady Video**

\$15.00 each

**Cambridge Rose Point by Mark A. Nye**

94 pages, fully indexed. Paperback with value guide \$14.95

**Value Guide**

Updated value guide for Rose Point Book. Included with above.

Price alone, includes postage \$5.00

*For NCC Members, these publications above at a 10% discount.*

*by Bill and Phyllis Smith*

**Cambridge Glass 1927-1929**

66-page reprint of original catalog with updated price guide.

Paperback with identification guide \$7.95

*by Mark A. Nye*

**Cambridge Stemware NEW. 2nd edition.**

Same format as original \$19.95

*by Mary, Lyle and Lynn Welker*

**Cambridge Glass Company**

120 pages of reprints from eight old catalogs. Paperback \$10.00

**Cambridge, Ohio Glass in Color II**, Spiralbound \$5.95

*by Harold and Judy Bennett*

**1903 Cambridge Glass Company Catalog Reprint**

106-page reprint of an original catalog. Paperback \$7.50

*by Degenhart Paperweight and Glass Museum*

**Reflections**

45-page book giving a history of all 18 glass companies in Guernsey County.

Paperback with pictures \$5.00 including postage

**Address orders to:**

**Books**

**National Cambridge Collectors, Inc.**

**P.O. Box 416**

**Cambridge, OH 43725-0416**

Please add postage and handling to your order (first book, \$3.00; each additional book, \$1.00). Ohio residents add 6 1/2% state sales tax. Please send only check or money order, NO CASH, NO CHARGE CARDS. *Dealer Discounts Available - Please Write!*

## DEALERS



## DIRECTORY

NOTE: When writing to the dealers listed here, please enclose a SASE!

|                                                                                                                                                                                                                                                    |                                                                                                                                                                                                               |                                                                                                                                                                                                                                      |
|----------------------------------------------------------------------------------------------------------------------------------------------------------------------------------------------------------------------------------------------------|---------------------------------------------------------------------------------------------------------------------------------------------------------------------------------------------------------------|--------------------------------------------------------------------------------------------------------------------------------------------------------------------------------------------------------------------------------------|
| <p><b>DAUGHERTY'S ANTIQUES</b><br/>Jerry and Shirley</p> <p>Antiques and Collectibles * Mostly Glass</p> <p>Shows &amp; Mail Orders 2515 Cheshire No<br/>402-423-7426 Evenings Lincoln NE 68512</p>                                                | <p><b>"HAPPINESS IS"</b><br/>Buddy and Kathy Stultz<br/>3106 Warren Court, Glen Allen, VA 23060<br/>804-672-8102</p> <p>Specializing in American Made Glass<br/>We Buy &amp; Sell, Shows &amp; Mail Order</p> | <p><b>THE JONES GROUP</b><br/>Cindy Jones<br/>Buy and Sell Cambridge Glass<br/>650 Riverside Drive<br/>Sleepy Hollow, NY 10591<br/>914-631-1656 or E-Mail Caprice0@aol.com</p>                                                       |
| <p><b>Milbra's Crystal</b> Buy &amp; Sell<br/>Replacement and Matching Specializing in<br/>Cambridge<br/>Milbra Long 817) 645-6066 Fostoria<br/>Emily Seate (817) 294-9837 Heisey<br/>PO Box 363, Rio Vista, TX 76093 and others</p>               | <p>BUY-SELL (513) 390-3617</p> <p><b>Taste of Honey</b><br/>Glassware - Collectibles</p> <p>Clarke West 4888 Brannan Dr. E.<br/>Carole West Springfield, OH 45502</p>                                         | <p><b>ARMORY ANTIQUES</b><br/>168 West Main Street<br/>Plain City, OH 43064</p> <p><b>QUALITY THINGS</b><br/>Cambridge, Heisey, China, Silver, Furniture<br/>Mon-Sat 10-5 VISA/MC 614-873-4890</p>                                   |
| <p><b>THE GLASS URN</b><br/>456 West Main Street, Suite G<br/>Mesa, AZ 85201 602-833-2702</p> <p>Mail Order Shows Open Shop<br/>CAMBRIDGE, FOSTORIA, HEISEY, ETC</p>                                                                               | <p><b>ANTIQUES ON THE MALL</b><br/>SPECIALIZING IN CAMBRIDGE GLASS</p> <p>Bogart's - Bldg #3 - Norwich, OH</p> <p>Virginia Bennett 614-432-4483<br/>64183 Warne Drive, Cambridge, OH 43725</p>                | <p><b>GATEWAY ANTIQUE MALL, INC.</b><br/>JUST NW OF MINNEAPOLIS-ST. PAUL, MN<br/>Next to Super 8 in Rogers, MN<br/>(I-94/101 Intersection)</p> <p>85 Dealers 7 Days, 10-6 612-428-8286<br/>ELAINE STORCK, OWNER/DIRECTOR</p>         |
| <p><b>YOU CAN ADVERTISE YOUR<br/>ANTIQUe SHOP HERE!</b></p>                                                                                                                                                                                        | <p><b>D &amp; D ANTIQUES</b><br/>Columbus, Ohio</p> <p>Dick Slifko SHOWS ONLY</p>                                                                                                                             | <p><b>JAMESTOWN ANTIQUES</b><br/>16 E. Washington St., Jamestown, OH 45335<br/>Rosepoint and Cambridge our Specialty<br/>Shows and Shop (chance or appt.)</p> <p>Buy (937) 675-6491 Sell<br/>Susan and Larry Everett</p>             |
| <p><b>THE GLASS CUPBOARD</b><br/>P.O. Box 652<br/>West End, North Carolina 27376</p> <p>Marcia Ellis Cambridge, Duncan, Heisey<br/>910-673-2884 Shows, Mail Order</p>                                                                              | <p><b>JUDY'S ANTIQUES</b><br/>Judy Bennett<br/>422 S. Ninth Street (Corner of Jefferson)<br/>Cambridge, Ohio 43725<br/>BUYING Ph 614-432-5855 SELLING</p> <p>CAMBRIDGE GLASS MY SPECIALTY</p>                 | <p><b>We Buy Cambridge</b><br/>Kelvin and Heather Moore<br/>810 Red Mill Drive<br/>Tecumseh, MI 49286<br/>Phone 517-423-0993</p>                                                                                                     |
| <p><b>FINDER'S ANTIQUE HOUSE</b><br/>New Home of Elegant Glassware<br/>1169 Piney Forest Rd.<br/>Danville, VA 24540<br/>(804) 836-6782<br/>Cambridge-Heisey-Duncan-Fostoria</p>                                                                    | <p><b>GREEN ACRES FARM</b><br/>2678 Hazelton Etna Rd., Pataskala, OH 43062<br/>(State Route 310 North)</p> <p>Sat &amp; Sun 1-7 PM 614-927-1882<br/>Antiques, Crystal Glass and Collectibles</p>              | <p><b>CRYSTAL LADY</b><br/>1817 Vinton St., Omaha, NE 68108<br/>Joann D. Hagerty<br/>Bus. 402-341-0643 Res 402-391-6730<br/>Specializing in Elegant Glass &amp; Collectibles</p>                                                     |
| <p><b>ASK</b><br/>Specializing in Cambridge. Wide variety</p> <p>Booth #14 in the Antique Mall of Boswell<br/>90 miles south Chicago, right on U.S. 41<br/>7 days a week 10-5, except Sun. 12-5<br/>(317) 869-5525</p>                             | <p><b>SOLITO</b><br/>54 Old Stafford Rd., Tolland, CT 06084<br/>Depression Era Glass - China<br/>(860) 872-3294<br/>Florence Joe</p>                                                                          | <p><b>PENNY COURT MALL</b><br/>637 Wheeling Avenue<br/>Cambridge, Ohio<br/>100 Booths 15,000 sq ft<br/>HOURS: Daily 10-6 Sunday Noon-5<br/>Closed: Easter, Thanksgiving, Christmas<br/>Call for Other Holiday Hours 614-432-4369</p> |
| <p><b>MICHAEL KRUMME</b><br/>Cambridge*Heisey*Fostoria*Duncan Miller*Paden City<br/>New Martinsville*Fenton*Tiffin*Imperial*Morgantown</p> <p>I search - Send detailed want list - all kept on file<br/>PO Box 5542<br/>Santa Monica, CA 90409</p> | <p><b>YOU CAN ADVERTISE YOUR<br/>ANTIQUe SHOP HERE!</b></p>                                                                                                                                                   | <p><b>MARGARET LANE ANTIQUES</b><br/>2 E. Main St., New Concord, OH 43762<br/>Lynn Welker 614-826-7414</p> <p>Cambridge Glass Matching Service<br/>Hours Mon-Fri 10-12 AM, 1-5 PM or by Appointment</p>                              |
| <p><b>ISAACS ANTIQUES</b><br/>(614) 826-4015</p> <p>See our booths in Penny Court Mall in Cambridge<br/>and East Pike Antique Mall at Rt. 40, one mile west<br/>of I-70 Norwich Exit #164</p>                                                      | <p><b>ALADDIN LAMP BOOKS</b><br/>Free List<br/>Figurine Lamps Wanted<br/>Bill &amp; Treva Courter<br/>3935 Kelley Rd Kevill, KY 42053<br/>Phone/FAX 502-488-2116</p>                                          | <p><b>DEXTER CITY ANTIQUE MALL</b><br/>P. O. Box 70, Dexter City, Ohio 45727<br/>(614) 783-5921</p> <p>Located on Ohio St. Rt. 821<br/>Between Exits 16 &amp; 25 off I-77<br/>Just 30 min. South of Cambridge, Ohio</p>              |

National Cambridge Collectors, Inc.  
**NOVEMBER QUARTERLY MEETING**

Saturday, November 8, 1997  
Cambridge Country Club

**COCKTAILS - Cash Bar at 5:30 p.m.**  
**DINNER at 6:00 p.m.**  
**QUARTERLY MEETING at 7:30 p.m.**

**PROGRAM: CAMBRIDGE CAPRICE -  
BRING BEAUTIFUL & UNUSUAL PIECES  
FROM YOUR PERSONAL COLLECTION**

Cambridge Country Club, Route 209, 2 1/2 miles south of I-70.  
Buffet dinner: Roast pork or Chicken Marsala, medley of vegetables,  
potatoes au gratin, and dessert bar. Tea or brewed coffee.  
Club dress code - No jeans please.

**\$15.50 per member**

**PLEASE MAKE YOUR RESERVATIONS EARLY!**

**RESERVATIONS MUST BE RECEIVED AT THE  
NCC POST OFFICE BOX BEFORE NOVEMBER 3**

**NOVEMBER  
QUARTERLY MEETING**

Saturday, November 8, 1997  
Cambridge Country Club

Name(s) \_\_\_\_\_  
\_\_\_\_\_

Number Attending \_\_\_\_\_

Amount Enclosed \_\_\_\_\_  
(\$15.50 per member)

Mail to:

National Cambridge Collectors, Inc.  
P.O. Box 416  
Cambridge, OH 43725-0416

**RESERVATIONS MUST BE  
MADE BEFORE NOVEMBER 3**

National Cambridge Collectors Inc  
PO Box 416  
Cambridge OH 43725-0416

FIRST CLASS MAIL  
U.S. POSTAGE  
PAID  
PERMIT NO. 1  
CAMBRIDGE, OH

**FIRST CLASS MAIL**

*Membership Renewal Notice*

**If the date on your address label is 10-97,  
this is your LAST ISSUE of the Crystal Ball.**

Please take a moment and renew now. Thank you!