



Cambridge Crystal Ball

Published monthly by National Cambridge Collectors, Inc.
to encourage and report the discovery of the elegant and boundless product of the
Cambridge Glass Company of Cambridge, Ohio

Issue No. 319

November 1999

The Cambridge Swans - Part IV

by Les Hansen

Seven sizes of Cambridge swans ranged from a mere 3" to a colossal 16". With such a wide range of sizes, the swans also had a broad spectrum of intended uses. The advertised uses (sometimes multiple) for the "regular" swans of various sizes follows (with their mold numbers):



1042—6½"
This size sold either with 2¼ in. Flower Block for small Centerpiece, or with Ladle to make Mayonnaise Set. Used also as Candy Dish.

- | | | |
|-----|------|--|
| 3" | 1040 | Individual nut or mint
Ash tray |
| 4½" | 1041 | Candy dish |
| 6½" | 1042 | Mayonnaise (when sold with a ladle)
Candy dish
Centerpiece (when sold with a 2¼" flower block) |
| 8½" | 1043 | Celery holder
Bonbon
Centerpiece (when sold with a 2¼" flower block) |
| 10" | 1044 | Centerpiece (was sold with or without a 3" flower block) |
| 13" | 1045 | Centerpiece (was sold with or without a 3½" flower block) |
| 16" | 1221 | Punch bowl |

The Cambridge swans were introduced (Type 1) in catalog pages from fall 1928 (page 52 of the 1927-29 catalog reprinted by Bill and Phyllis Smith). In that original presentation of the swans in a catalog, two supplemental pieces could be purchased that adapted two of the swans for other uses. These were a candleholder insert (mold number 1050) for the 4½" swan and a flowerpot insert (mold number 1052) for the 10" swan. In each case, the swan itself was unaltered; however, by placing a candleholder insert inside, the 4½" swan became a candleholder. Likewise, by placing a flowerpot insert ("liner") inside, the 10" swan became a flowerpot.

The subsequent catalog appearance of the swans is in the 1930-34 catalog reprinted by NCC on page 48, which probably dates to January 1930. The candleholder insert continued to be presented; however, the flowerpot insert was not mentioned. Therefore, the flowerpot insert must have been produced

(Continued on page 14)

Inside This Issue:

It's Show Time
August Quarterly Meeting Minutes
Cambridge Ritz Blue
Forgotten History

Cambridge Crystal Ball

Official publication of National Cambridge Collectors Inc., a non-profit corporation with tax exempt status. Published once a month for the benefit of its members. All rights reserved; reproduction in whole or in part without written permission of NCC and the author is prohibited.

Membership is available for individual members at \$17.00 per year and an additional \$3.00 for associate members (12 years of age and older, residing in the same household). Of the master member dues, \$12.00 is credited to a one-year subscription to the *Crystal Ball*. All members have voting rights, but only one *Crystal Ball* per household. **Multi-year memberships are available: 2 years for \$33.00, 3 years for \$49.00.**

1998-1999

OFFICERS AND COMMITTEE CHAIRPERSONS

President	Tarzan Deel
Vice President	Richard D. Jones
Secretary	Sharon Miller
Treasurer	Charles Upton
Sergeant-at-Arms	Michael Neilson
Acquisitions	Lynn Welker, Lynne Franks
Budget & Finance	Dennis Snyder
By-Laws	Bud Walker
Corresponding Secretary	Charles Upton
Technology	Linda Roberts
Membership	Jeff Ross
Museum Relocation	Richard D. Jones
Museum Facilities	Carl Beynon, Joe Miller
Museum Interior	Lynn Welker, J.D. Hanes, Marybelle Teters
Non-Glass Items	Carl Beynon
Nominating	Rick Jones
Program	Bill Hagerty
Projects	Bill Hagerty
Publications	Mark A. Nye
Publicity	Cynthia A. Arent
Study Group Advisor	Marybelle Teters
2000 Convention	Mark A. Nye
2000 Auction	Squeek and Dorothy Rieker, Tom and Noreen Kullman, Lynn Welker
2000 Glass Show	Mary Beth Hackett, Joy McFadden
2000 Glass Dash	Bud Walker, Mike Arent
<i>Crystal Ball</i> Editor	Lorraine Weinman
<i>Crystal Ball</i> Circulation Directors ...	Lisa and Mike Neilson
WebMaster	Linda Roberts

Internet website: www.cambridgeglass.org

DUE TO FLOODING IN CAMBRIDGE, OHIO, THE NATIONAL CAMBRIDGE COLLECTORS' MUSEUM OF CAMBRIDGE GLASS AT 9931 EAST PIKE ROAD WILL NOT BE OPEN.

THE TEMPORARY NCC MUSEUM IS LOCATED IN PENNY COURT MALL IN DOWNTOWN CAMBRIDGE, OHIO.

ADVERTISING RATES

Display Rates (camera ready ads preferred)

Unit	Members	Non-Members
Full Page	\$45.00	\$60.00
3/4 Page	\$35.00	\$50.00
1/2 Page	\$25.00	\$35.00
1/4 Page	\$15.00	\$25.00
1/8 Page	\$10.00	\$15.00

(\$5.00 additional if a photograph is included in display ad)

Classified Rates

10 cents a word \$2.00 minimum

Abbreviations and initials count as words. Type sizes cannot be mixed in classified ads. **Payment in full must accompany all ad copy.** Contact Editor for copy assistance.

Dealer Directory

Six Line Maximum \$24.00 for 12 month contract

Also included - Listing on our Internet site at:

www.cambridgeglass.org

Cambridge *Crystal Ball* assumes no responsibility for items advertised and will not be responsible for errors in price, description, or other information.

Advertising copy, letters, articles, must be received by the 5th of preceding month to be considered for publication in the next issue.

Please address all correspondence (include SASE) to:
(or E-Mail NCC_Crystal_Ball@compuserve.com)

National Cambridge Collectors, Inc.

P.O. Box 416
Cambridge, OH 43725-0416

President Tarzan Deel	540-869-3949
Vice President Rick Jones	914-631-1656
Secretary Sharon Miller	740-685-6513
Membership	email: jaross@cambridgeoh.com
NCC Museum: Phone	740-432-4245
Fax	740-439-9223

Please notify us immediately of any address change.

Opinions or information stated in any signed article or letter printed in the *Crystal Ball* are those of the author and may not agree with National Cambridge Collectors, Inc. The Editor reserves the right to refuse and to edit any material submitted for publication to conform to the editorial style of the *Crystal Ball*. Members are encouraged to write to NCC and the *Crystal Ball* sharing their knowledge and questions!

President's Message

It's Show Time

By the time you read this the Connecticut and the Old Dominion shows will be in the immediate future, November 13 and 14. If you can help, please drop by during the shows. Any amount of help will be accepted. Later this month is the Harrisburg show and they will need some help too.

We have received some interest on the old museum property, and we are waiting for a formal offer. The board will evaluate the offer when it arrives and discuss it at the November quarterly meeting, if necessary. Since the November quarterly meeting will have also occurred by the time that you have received your *Crystal Ball*, I will elaborate on any changes in the status of the property in the December article.

We are still looking for input on what you want in a museum? Have you sent us your thoughts yet?

Don't forget NCC when you do your holiday shopping. Books or Scotty dogs make an excellent gift.

As always we are looking for feedback from the membership on anything. I have recently received some interesting ideas from a member, which we are evaluating now. Do you have any suggestions?

Don't forget the special sale on the 1940 catalog; it is now \$25 until the end of the year. I use mine a lot, so if you have ever thought about purchasing one, now is the time.

The shows coming up that we need help with are as follows:

Old Dominion Depression Glass Show
Nov. 13 & 14 - Annandale VA

All Depression Glass Show
Nov. 13 & 14 - Southington, CT

Eastern National Antiques Show
Nov. 19 thru Nov. 21 - Harrisburg, PA

Sanlando Glass Show
January - Sanford, FL

If you can help us out by donating your time, please notify us by mail/email/phone so we know you are coming.

Have a great month,

Tarzan

New Study Group

WANTED: Members for a new study group to be formed in the Columbus, Ohio area

If interested in participating, please contact Linda Roberts at 614-337-9775 or email her and Bryan at lrobert@columbus.rr.com. With enough interest, there will be a new study group started by the new year!

Atlantique City Antique Show

On Saturday, October 17, 1999, John, Terry, Anna, and Bud boarded the train for the short ride from Egg Harbor to Atlantic City. Our destination was the Atlantic City antique show. Unless you experienced it, you wouldn't believe the ease of attending the show when you go by train. When you get off the train, it is a short walk and an escalator ride and you are on the convention hall floor.

This year's show had outstanding glass displays. There was more Cambridge for sale than was seen at previous shows. The most prevalent patterns were Rosepoint and Wild Flower. There were pieces done in Cleo, Elaine, Diane, and Chantilly. Most Cambridge colors were to be found. One could find Talley-Ho, Carnival, and Near Cut.

We were all surprised to bump into Dean and Cathy, members of our study group, The Elegant Glass Collectors. They collect cordials and had found several to add to their collection. One wonders where the time goes as we prepared to board the train for the ride back home. After a pork and sauerkraut dinner at the local Masonic Lodge, we said our good-byes and our friends headed back to Harrisburg. We had seen a lot of nice Cambridge pieces, walked a lot of miles, and all came home with that special piece of Cambridge that we couldn't live without. The unusual pieces of Cambridge were still to be had at this show.

Bud Walker

Tentative 1999-2000 Calendar Planning

Mark your calendars now with these important events during the coming year:

November 6

November Quarterly Meeting and Education Program
Cambridge Holiday Inn
Cambridge, Ohio

March 3

March Quarterly Meeting
Pritchard Laughlin Civic Center
Cambridge, Ohio

March 4

All Cambridge Glass Auction
Pritchard Laughlin Civic Center
Cambridge, Ohio

June 21-25

2000 National Cambridge Collectors' Convention
Pritchard Laughlin Civic Center
Cambridge, Ohio

June 23-25

NCC Glass Show and Sale
Pritchard Laughlin Civic Center
Cambridge, Ohio

June 24

"Glass Dash" ("flea" market)
Beech Grove Family Development Center
Cambridge, Ohio

June 25

NCC Annual Meeting
Pritchard Laughlin Civic Center
Cambridge, Ohio

August 26

August Quarterly Meeting
Theo's Restaurant/Coney Island (tentative)
Cambridge, Ohio

August Quarterly Meeting Minutes

National Cambridge Collectors, Inc.

August 28, 1999

At 1:00 p.m., President Tarzan Deel called to order the August Quarterly Meeting of NCC, Inc. A motion was made by Rick Jones and seconded by Mark Nye to dispense with the reading of the minutes from the 26th Annual Meeting, June 27, 1999, as to be published in the September *Crystal Ball*. The motion carried.

Charles Upton presented the Treasurer's Report. The fund balances as of July 31, 1999, were as follows: Operating Fund, \$46,857; Museum Fund, \$244,356; Building Fund, \$55,444; and Endowment Fund, \$14,553; for a total equity of \$372,210. Last year's total on July 31, 1998, was \$285,975. Charles further reported that the publication rate with the *Daily Jeffersonian* has increased, therefore the cost to print the *Crystal Ball* has increased. Charles then called for questions from the membership.

Committee reports were presented by the following committees:

Acquisitions: A set of four multicolored 3400 line mugs have been acquired.

Budget and Finance: Charles Upton - No report

By-Laws: Bud Walker - No report

Technology/Website: Linda Roberts reported that approximately 4,700 pages are being read on the website per month. Photos of the glass appear to be very popular and Linda asked that members send more photos to put on the website. Several of the items that are currently being put on are patents, the Scottie Dog promotion, and the membership application. Linda reported that the Heisey Club site is our best link on the net and that our site is active and used. Many overseas readers are accessing as well. Tarzan Deel expressed his thanks to Linda for her hard work in making our website viable again.

Membership: Jeff Ross reported that the website and the book tables at the various shows are generating good results. The following is a breakdown of membership categories as of this date: master members, 1,009; associate members, 376; honorary, 4; lifetime, 4; for a grand total of 1,393. Jeff also reported that Paul White has been given lifetime membership status.

Museum Location: Rick Jones reported that the organization had received a \$2,000 grant from the

Columbus Foundation that sponsors the McManus-Shepard Fund. It will be used to help defray the cost of architectural plans for the museum. A fund matching program will be initiated by the board. Persons matching the \$2,000 grant award will be given a pair of sandblasted Scottie Dogs. Rick announced that the committee will be looking further into a storage facility and any discussion of construction, etc., has been tabled until the November meeting. There have been no tangible offers to date on the former museum property. Rick announced that a subcommittee structure for moving ahead with plans for the new museum has been established as follows:

Finance - Dennis Snyder, Chair
Design - Mike Neilson, Chair
Operations/Planning - Lynne Franks, Chair -
 Lynn Welker, J.D. Hanes, and Marybelle Teters
Grants & Fundraising - Sharon Miller, Chair -
 Phil Cole, Judy Momirov, Sarah Carpenter, and
 Linda Roberts
Relocation - Carl Beynon, Chair

Volunteers for committees are being sought from the membership according to their particular interests. There are plans for a questionnaire to be included in the October *Crystal Ball* focusing on ideas and input for the new museum. It was also suggested that the website be used for the purpose of gaining input from the membership. Tarzan thanked everyone for their personal commitment to the museum projects.

Museum Facilities: Clean-up days were held during August with Willard Kolb, Bill Hagerty, and Fred Schafer giving assistance to Carl Beynon.

Interior: Lynn Welker announced that there is still some unclaimed glass from the flood clean up. Please let Lynn know if it may be yours. A list of glass owned, loaned, and donated has been published in the *Crystal Ball*. Penny Court is the temporary home of NCC, Inc. and is being handled by Charles Upton. One more showcase at Penny Court will soon be added to increase our presence in the community.

Non-Glass: Carl Beynon brought one of the large etching books that was done by Bill Smith off the original etching plates. Carl was pleased with the condition of the dried-out book and said that these books have been

(Continued on page 6)

salvaged.

Nominating: Rick Jones - No report

Program: Bill Hagerty noted a change in the place and date for the November meeting. He also reported that the dinner price for the meeting is higher because the club is paying for the speaker.

Projects: Bill Hagerty reported that the club has a good inventory of salt & pepper tops. There are still 150 pairs of Scottie Dogs to sell and part of this number are frosted. It has been decided that a pair of the frosted dogs will be donated to the Wee Scots. To date the Scottie Dog project has made a profit of \$40,000. Ads have been placed in the Wee Scots publication and *The Daze*.

Publications: Mark Nye reported that the '30-'34 updated price guide has gone to the publisher. The Rosepoint price guide is in limbo. A major etchings book of approximately 75-100 pages is a possibility for a new club publication. This publication will not include a price guide. Mark will be ready with a proposal for the November board meeting. The 1940 catalog is going to be offered to the membership at a reduced price of \$25 as a promotional item until the end of 1999.

Publicity: Cindy Arent reported that an ad had been placed on the Megashow.

Study Groups: No report

Convention: Mark Nye reported that 240 persons had registered for the 26th Annual Convention and there were 42 first-time attendees. The theme for the 2000 Convention will be "Cambridge in Three Centuries." Mark asked that members let him know if they have any suggestions for speakers.

Auction: Lynn Welker announced that Squeek and Dorothy Rieker and Tom and Noreen Kullman will be accepting glass shipments for the March 2000 auction.

Glass Show: Mary Beth Hackett and Joy McFadden will be asked to chair this committee for 2000.

Glass Dash: Bud Walker will remain on the committee, but Mike Arent will be seeking a replacement.

Crystal Ball: Lorraine Weinman - No report

Old Business: None

New Business: Tarzan Deel announced that a grant is currently being written for submission to the Kiwanis Foundation of Cambridge. The thrust of the grant will be to acquire equipment and materials to replace some of the educational programs that were destroyed in the flood. This grant is due to the Kiwanis Foundation on September 30, 1999, and will be for a total of \$12,000.

Discussion was held about the NCC, Inc. becoming more visible at a greater number of glass shows. It was pointed out that this is to be the thrust of the regional membership program. Several suggestions were presented for fundraising activities and after some discussion by the membership, it was suggested that these suggestions will be taken under advisement.

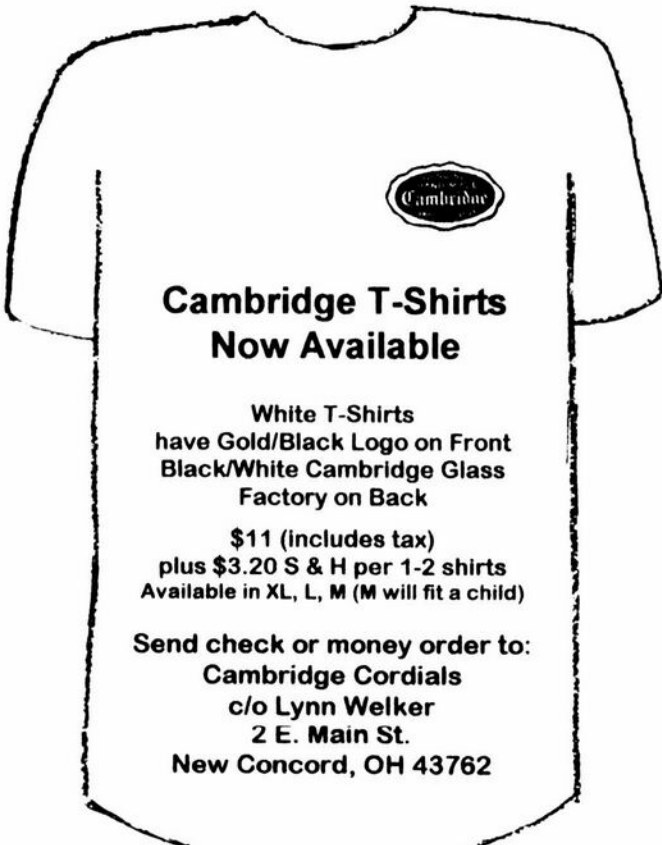
A motion to adjourn the August Quarterly Meeting was made by Rick Jones and seconded by Linda Roberts. The motion carried and the meeting adjourned at 2:15 p.m.

Respectfully submitted,

Sharon Miller
Secretary

Christmas Gift Ideas!

See pages 11, 15 and 17



**Cambridge T-Shirts
Now Available**

White T-Shirts
have Gold/Black Logo on Front
Black/White Cambridge Glass
Factory on Back

\$11 (includes tax)
plus \$3.20 S & H per 1-2 shirts
Available in XL, L, M (M will fit a child)

Send check or money order to:
Cambridge Cordials
c/o Lynn Welker
2 E. Main St.
New Concord, OH 43762

Cambridge Ritz Blue

by Mark Nye

On October 18, 1929, seventy years ago last month, a letter went out from the office of W. C. McCartney, Cambridge Sales Manager, to all Cambridge agents. The text of that letter is reprinted here.

"ALL AGENTS CIRCULAR LETTER #331:

We have just produced a new blue color. It will be known as the Ritz Blue. This color has been quite popular in New England and we find that there is becoming quite a little demand for it in other sections.

We are, therefore, sending you a short sample line and attached herewith is price list covering the items that we are manufacturing in this particular color.

It is a most rich shade of blue and if anything you might call it somewhat delicate, as it is not a harsh color, as blue is generally considered.

We trust that we may see some very nice business from you on this line."

The book *Colors in Cambridge Glass* states production dates for Ritz Blue are elusive. At the time the book was published, the earliest mention of Ritz Blue that could be found was in an internal Cambridge letter dated November 23, 1929. This circular letter, dated a month earlier appears to definitively indicate the color Ritz Blue was new that fall.

The price list that accompanied the letter listed a number of items. First was No. 3077 stemware, plain or etched E.739. The full line was listed including fingerbowl and plate. On the same page was listed a 12-oz. ice tea, along with three other sizes of tumblers: 10, 5, and 2 ounces. However, no line or item number was given. There was a significant difference in price from the 3077 footed tumblers; these being less expensive, and a larger quantity per standard package. This perhaps indicates these unidentified tumblers were flat, rather than footed.

Luncheon sets, service for four, six, or eight were also featured on the price list that accompanied C/L #331. These sets came from the Decagon line and consisted of the 698 8-in. plate, 865 cup and saucer, 979 cream and sugar, and the 870 sandwich tray. These two came plain or etched E.739. Plain and in lots of 100, the net price per set for the 15-pc. service for four was \$2.45; for six, \$3.25; and a 27-pc. set, service for eight, had a net price of \$4.15.

All of the items in the luncheon sets were also available separately as were the Decagon 842 12-in. bowl, the 1090 tall comport, and the 627 4-in. candlestick.

Not quite a month later, on November 14, 1929, Circular Letter #333 was issued and it too discussed the new color, Ritz Blue. While not listing any additional pieces, it is a "marketing letter."

"We have sent you samples of Ritz Blue, and want to call your attention to a Table Ensemble which is being used largely in this color as well as all other colors, both plain and etched, in the New England States. This consists of:

Luncheon Set, and sold with it our #842 Center Bowl, with either two or four #627 candlesticks and two #1090 Comports.

This makes a very handsome combination in the decagon shape and we believe that if you when selling Luncheon Sets will make the suggestion and show with the Luncheon set, this Console Set and the pair of Comports, that you will be able to sell quite a few of these along with the Luncheon Sets. Remember to make the suggestion and show these both in the plain and etched.

We trust this will aid you in obtaining some nice orders for these sets."

Surprisingly, there is no mention of Ritz Blue in the trade journals or Cambridge advertising during 1930. The 1931 Cambridge pocket calendar/diary included Ritz Blue in its list of Cambridge colors. Again, during 1931 various Cambridge advertisements as well as articles in trade journals mentioned and/or listed Cambridge colors with no further mention of Ritz Blue. The reason behind this absence remains a mystery. Perhaps it didn't sell well and was soon discontinued. And yet we have the listing in the 1931 calendar/diary. Maybe someday the answer will be found.

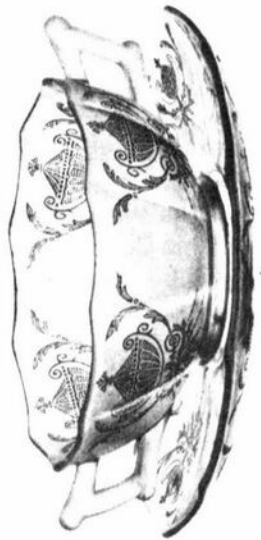
Ritz Blue is very similar to Cobalt Blue 2. Ritz Blue is slightly darker and more evenly colored than Cobalt Blue 2. One of the best ways to identify the color is by the piece. If the piece is from the Decagon line it is most likely Ritz Blue rather than Cobalt Blue 1 or 2, both of which were discontinued before the introduction of the Decagon line.

The Cambridge Glass Co.

Decagon Dinnerware Plate Etched "739"



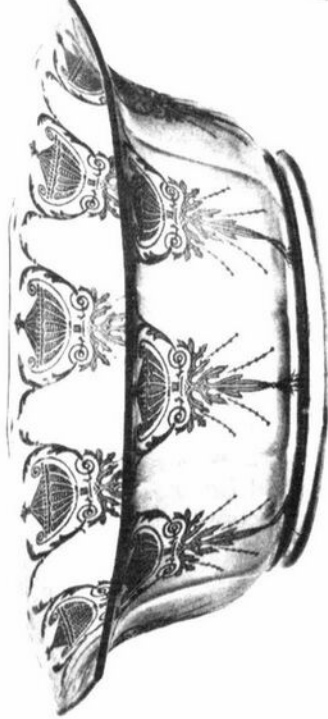
809-6 1/4" Bread and Butter Plate



1075 Cream Soup and Saucer



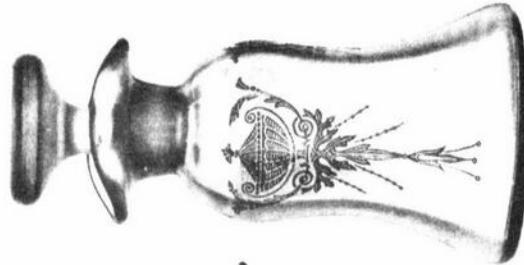
865 Cup and Saucer



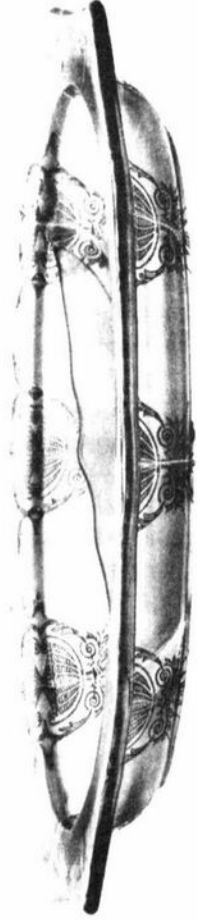
1085-9" Vegetable Dish "Round"



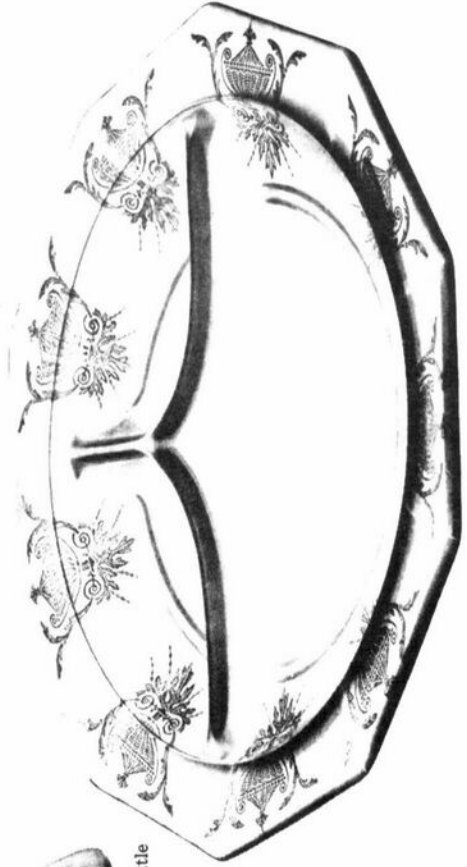
917/1167 Gravy Boat and Stand



1268 French Dressing Bottle



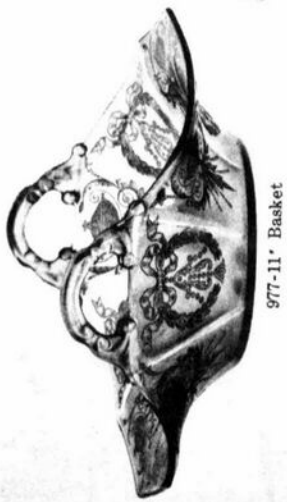
1068-11" 2 Part Relish



1200-10" Club Luncheon Plate



Decagon Line Plate Etched "738"



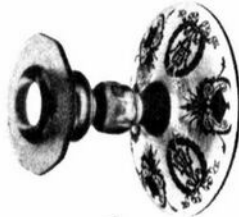
977-11' Basket



627-4' Candlestick



856-11' Bowl



627-4' Candlestick



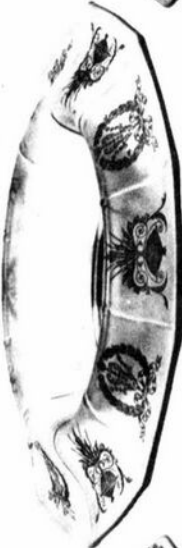
1090-7' Tall Compot



877-11 1/2' Compot



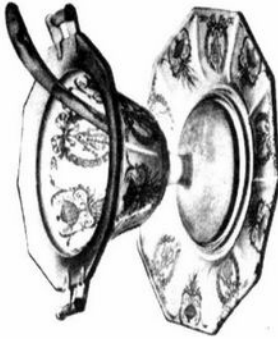
878-4' Candlestick



855-11' Bowl



878-4' Candlestick



873 3 Pc. Mayonnaise Set



971-8 1/2' Bowl



842-12' Bowl



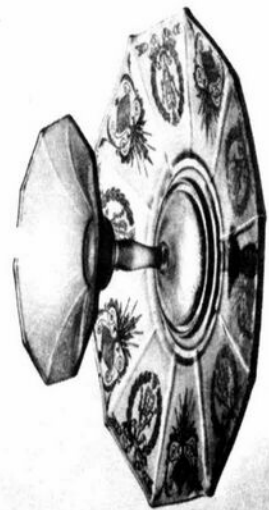
867 Sugar



867 Cream



984-10' Bowl



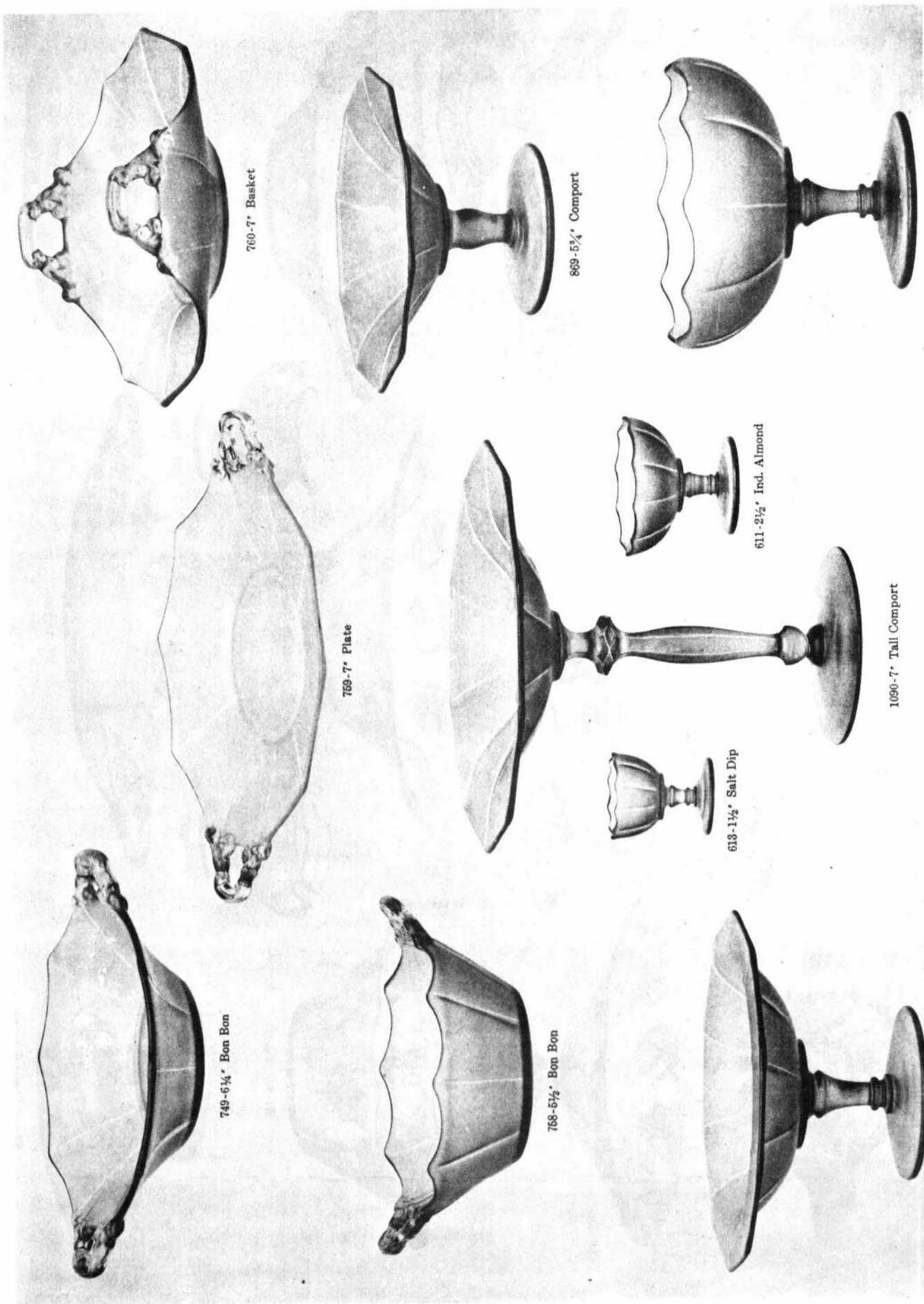
868-11' Cheese and Cracker



870-11' Hdl. Sandwich Tray



Decagon Dinnerware



The Cambridge Glass Co.





Need a great idea for a Christmas gift?

Scottie Dog Bookends would make a wonderful gift!

WON'T YOU HELP?

The Ohio flood of 1998 destroyed the National Cambridge Collectors' Museum. Due to our great loss we are offering the public an opportunity to help by purchasing a special edition of Scottie Dog bookends. These Scotties will be made from the original Cambridge Glass mold in a "Moonlight" blue color, and will be clearly marked with the N.C.C. name, date and Mosser logo. This color will be limited to the year 1999. The cost will be \$100 per pair. Shipping charge is \$10 per pair. If you are an Ohio resident, you will be subject to 6 1/2% sales tax (\$6.50 per set).

THANKS!!!!

Order blank

Name: (please print) _____

Address: _____ Phone (____) _____ - _____
(UPS requires a street address) (Required if you give a P O Box)

City: _____ State: _____ Zip Code _____ - _____

No. of pair FROSTED	_____	X	\$100.00	=	\$ _____	
No. of pair NON-FROSTED	_____	X	\$100.00	=	\$ _____	Check number \$ _____
Shipping - \$10.00 per pair	_____	X	\$10.00	=	\$ _____	Amount \$ _____
Sales tax (if Ohio Resident)			\$ _____		(\$6.50 per pair)	Date _____
Total of order				=	\$ _____	

Make checks payable to: **N.C.C., Inc.**

Mail to: **National Cambridge Collectors, Inc.**
P. O. Box 416
Cambridge, OH 43725-0416

P.S. Those of you who are dealers and are buying the above Scotties for resale, and will not be paying the State of Ohio Tax, will have to sign a tax exempt form for such and all lines must be filled out completely to be exempt from paying the State of Ohio Sales Tax.

The undersigned hereby claims exemption to purchase of tangible personal property from the National Cambridge Collectors, Inc. on and after February 5, 1999 and certifies that this claim is based upon the purchaser's proposed use of the items purchased, the activity of the purchaser, or both as shown hereon: (Exemption Number from Rule #93.

 (Purchaser's Name)

 (Purchaser's Address)

 (Purchaser's Activity)

 (By - Signature and Title)

 (Date Signed)

 (Vendor's License Number)

Forgotten History of The Cambridge Glass Co.

by Bud Walker

This story had its beginning in 1901 when two workers left Louis Comfort Tiffany's New York glass factory. They were Martin Bach Sr., who had been a formula mixer, and Thomas Johnson, a skilled glass blower. The two men formed a new company and it was known as the Quezal Glass Company. This factory produced iridescent art glass, similar to that of the Tiffany Company.

Martin Bach Sr. had three children; a boy and two girls. Young Martin Bach grew up in the glass business. He became head of the Quezal company upon the death of his father in 1921. In spite of all his efforts, business declined and new backers took control of the company. Martin Bach was relegated to general manager. Being unable to see the company that his father had started going into such a decline, he elected to leave. He and his family moved to Toledo, Ohio, where he was employed by the DeVilbiss perfume atomizer company. From Martin Bach's records, we learn that he was not too happy with working for DeVilbiss because on October 6, 1924, Martin Bach contacted the Cambridge Glass Company in reference to employment with them. We know this to be true because on October 16, 1924, Mr. J.C. Kelly, who was factory superintendent of the Cambridge Glass Company, responded saying that they were interested in the iridescent line such as was made

by Quezal, Corning, and Tiffany; but were not quite ready to start production and they would keep his letter on file for the future.

With this rejection, Martin Bach was forced to seek employment elsewhere. He and Emil Larson teamed up and helped organize the Durand Art Glass division of the Vineland Flint Glass Works. This division was highly successful until the untimely death of Victor Durand in an auto accident.

This bit of history could have been lost forever if it were not for the research of Gay LeCleire Taylor, curator of the Museum of American Glass at Wheaton Village in Millvale, New Jersey. In researching documents that had been donated to the museum by heirs of Martin Bach, Gay found the letter from Kelly on a Cambridge letterhead. Knowing my interest in Cambridge Glass, Gay provided us with a copy.

From this new information, we now know that serious consideration was given to producing an iridescent line of art glass. Why production never commenced must remain a mystery until additional information surfaces.

(Editor note: See the copy of the Kelly letter to Martin Bach on the next page.)

18th Annual Glass Show & Sale Glass From The Depression Era and other periods

Southington High School, 720 Pleasant Street, Southington, CT

Sat. 10AM-5 PM Nov. 13 & 14, 1999 Sun. 11AM-4PM

Admission \$4.50 Each. One or more with coupon \$4.00 each

Admission includes a free door prize ticket

Information call 860.628.5388, 860.673.4088 or e-mail r.marotto@snl.net or JLTREASURES@worldnet.att.net

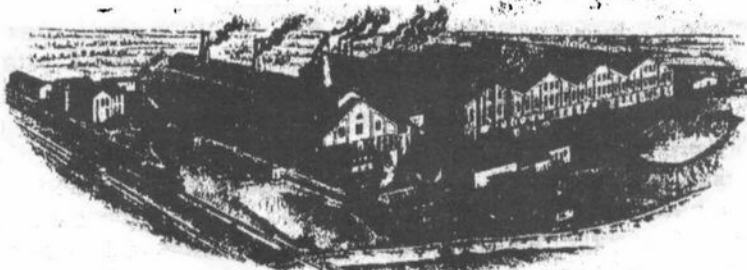
To benefit The National Cambridge Museum

I-84 Eastbound exit 32, Left to Rt. 10, left at 4th light to Flanders St. School 1/2 mi. on right.
I-84 Westbound exit 32, Right to Rt. 10, left at 5th Light to Flanders St. School 1/2 mi. on right.

NEW YORK SHOWROOMS
184 FIFTH AVENUE
CORNICIATE RELATIVE TO THIS

CHICAGO SHOWROOMS
215 W. WABASH AVE
17 N. WABASH AVE

ARTHUR J. BENNETT, PRESIDENT
W. L. ORME, VICE-PRESIDENT
W. C. MCCARTNEY, SECRETARY
G. ROY BOYD, TREASURER
J. C. KELLY, FACTORY SUPERINTENDENT



MANUFACTURERS
PRESSED TABLEWARE AND TUMBLERS
NOVELTIES
LEAD BLOWN STEMWARE
AND BAR GOODS

WE ARE ESPECIALLY EQUIPPED
TO MAKE AND OPERATE SPECIAL MOULDS

ALL SALES AND CONTRACTS ARE
SUBJECT TO STRIKES, ACCIDENTS,
FIRES OR OTHER UNAVOIDABLE DELAYS.

THE CAMBRIDGE GLASS CO.

ADDRESS ALL COMMUNICATIONS TO THE
COMPANY AT CAMBRIDGE, OHIO, U.S.A.
DELAY IN DELIVERY MAY BE EXPECTED
ATTENTION



CAMBRIDGE, OHIO, U.S.A.

MADE IN U.S.A.
TRADE MARK
REGISTERED

October 16, 1924.

Mr. Martin Bach,
134 Rosalind Place,
Toledo, Ohio.

Dear Sir:

We have yours of the 6th, in regard to our Company being interested in the Iridescent Line such as made by Quezal, Corning and Tiffany.

We are interested in this line but are not quite ready to start manufacturing it. We are keeping your letter on file and may be able to use a man with your knowledge in the near future.

Yours truly,
THE CAMBRIDGE GLASS CO.

J. C. Kelly
Factory Supt.

JCK/s

(SWANS - Continued from page 1)

for a very short period of time, probably from the fall of 1928 until sometime in 1929. The idea of putting dirt in a flowerpot insert that in turn would be placed inside a beautiful 10" Type 1 swan is a rather revolting thought to Cambridge swan collectors today, and perhaps it wasn't a happy thought for buyers of Cambridge glass in the late 1920s either. Apparently, the flowerpot inserts didn't sell well. Personally, I have seen only one flowerpot insert during the many years that I have been collecting Cambridge swans, and that insert (Peachblo) was both stained and damaged. The flowerpot insert is very utilitarian and is in no way elegant – it is oval, is smooth sided, has a hole in the center on its bottom, and has small "feet." The feet on the insert lift the bottom of the insert above the inside base of the 10" swan, permitting water drainage from the soil inside the flowerpot insert into the interior bottom of the swan itself – again, what a horrifying idea! The candleholder insert was produced in the same colors as the 4½" swan – Crystal, Ebony, Peachblo, and Light Emerald – and, although not plentiful, can be found today with some searching. The flowerpot insert should have been produced in the same colors as the candleholder insert.

The candleholder insert for the 4½" swan was not in the 1940 Cambridge catalog, so this insert was probably discontinued sometime during the 1930s. However, the concept of a 4½" candleholder swan had a reincarnation during the 1950s. Clyde Ingersoll's excellent article on the evolution of the Cambridge swan molds in Issue #202 of the *Crystal Ball* indicated that a new plunger for the 4½" swan was ordered on April 4, 1952, so a 4½" swan candleholder could once again be produced. This time, however, the candle well was part of the swan itself. Apparently, a single swan mold could be used to make the 4½" swan (Type 3), both with and without the candle well, by simply changing plungers. The date for ordering of the plunger fits information in Cambridge price lists, because the March 18, 1952 price list didn't contain a 4½" swan candleholder, but the price list from January 1, 1953 did. It was produced in Crystal only at that time. For a period of time in 1954, before the initial closing of the Cambridge factory, the 4½" swan candleholder was also produced in Milk. The March 16, 1956 price list from the reopened period (1956-58) made no mention of a 4½" swan candleholder, so production was probably limited to the years of 1952 to 1954 and the colors of Crystal and Milk.

Another innovation for the swans was a cover for the 8½" swan. Once again, in this series of articles on Cambridge swans, we refer to Circular Letters #31 and #41 of the Cambridge Glass Company that were distributed in 1937 and were reprinted in Issue #192 of the *Crystal Ball*. In CL #31, Cambridge officials announced that the design of the 8½" swan was changed, which would be from Type 1 to Type 2, as has been previously discussed. However, the company also indicated that a cover had been made for the 8½" swan to

create a covered candy box or bonbon. In CL #41, the 8½" swan was offered in either Crystal or Moonlight, with or without a cover. Interestingly, according to this CL #41, all of the other sizes of swans (Type 1, except for 3") were available in Crystal only in 1937. The Type 2 swans in the 8½" size were likely made during the period from 1937-39, and very few of them have surfaced in either Crystal or Moonlight, with or without a cover. The cover has a glass-petaled rose as a handle that was attached (while the glass was still hot) to a smooth raised area in the middle of the top of the cover.

Although CL #31 suggested that the cover for the 8½" swan was new in 1937 for the Type 2 swan, the cover was actually produced earlier for Type 1 swans. We know this because of at least two Light Emerald 8½" Type 1 swans with Light Emerald covers that are known to exist. These Light Emerald covers are identical in shape to the Crystal and Moonlight covers found on 8½" Type 2 swans; however, they differ in two ways other than color. First, the Light Emerald covers don't have the rose handle. Second, the feathers of the Light Emerald covers have feather detail just like the Type 1 swans that they cover. Therefore, the cover for the 8½" swan was first designed and produced prior to 1937. Whether the cover with feather detail, but without the rose handle, was a regular production item is unknown, and whether it was produced in colors other than Light Emerald is also unknown.

Yet another twist on the history of covers for 8½" swans appeared in a photograph in Issue #248 of the *Crystal Ball* – a pair of covered swan lamps. Although the photograph is dark, the 8½" covered swans appear to be Type 3 Crystal swans, with covers that lack both feather detail and the rose handle. An enterprising company probably purchased the swans with covers from Cambridge and manufactured the remainder of the lamp fittings. The swan covers for these lamps, however, suggest that there might be three versions of the cover for 8½" swans. In his article on Cambridge swan molds, Clyde Ingersoll indicated that the mold for the cover was junked in the early 1940s as part of the WWII scrap drive.

To this point, we haven't discussed the glass items that complemented the 16" swan punch bowl. This includes a base, a ladle, and swan punch cups. The swan punch bowl was produced in Crystal (both Type 2 and Type 3), Crystal Satin, Milk, and Carmen; however, as far as I know, the punch bowl base was made in Crystal only. The punch bowl base is actually quite small (it fits inside the bottom rim of the swan) and is fairly light in weight to hold such a heavy piece of glass, especially when it is full of punch. This could help explain why so many Crystal swan punch bowls lack a base – the bases might have been easily damaged or they might have gone unused and were consequently discarded. A ladle could be purchased with the swan punch bowls, but it was a generic ladle made of either glass or chrome. Punch

(Continued on page 15)

(SWANS - Continued from page 14)

cups, however, were designed specifically to match the swan punch bowl. The handle of the punch cup is the neck of a swan, and the lower half of the cup contains the body of the swan. The swan punch cups are quite easy to find today in Crystal because the swan punch bowl and cups were introduced in 1937 and were produced in Crystal for 21 years until the final closing of the plant in 1958. Milk swan punch bowls and punch cups were made only during 1954. I'm not aware of Carmen swan punch cups being reported to date.

In summary, other than the 4½" swan candleholder produced in the 1950s in Crystal and Milk, the swans discussed in this article are not different in themselves, but rather they have supplemental pieces added to them to alter or facilitate their use. These include inserts (for

the early 4½" candleholder and for the 10" flowerpot), a cover (for the 8½" swan), a base (for the punch bowl), or an accompanying cup (for the punch bowl). If you have additional information regarding Cambridge swans in general, or decorated swans in particular, feel free to contact me by mail at: 898 Hunt Place, St. Paul, MN 55114, or by email at: hanse009@tc.umn.edu



Have you visited our website lately?

Come see the changes!

<http://www.cambridgeglass.org>

SPECIAL SALE FOR A LIMITED TIME!

AVAILABLE NOW...

The 1940-1941 Cambridge Glass Co. Catalog Reprint

250-page reprint of original catalog and all well-known supplemental pages.

Drilled, ready for placement in your own three-ring binder.

Due to its size, the reprint DOES NOT include a value guide. B&W

Regularly \$34.95 — NOW **\$25.00** (plus \$3.00 shipping & handling)

Send all orders to the NCC post office box - See Page 17 for the address.

NATIONAL STUDY GROUP REPORTS



Study Group #13 The Miami Valley (Ohio) Study Club

The Miami Valley (Ohio) Study Club's annual Pig Roast was held at Swigart Park in Laura, Ohio, on Saturday, September 11, with George and Bev Stamper hosting. President George Stamper presided, and 23 members and friends were present.

We are happy to report that our study club's website is now up and working on **activedayton.com**. Thanks go to Bill Dear for designing the site.

Dates to remember:

- October Meeting** - Tues., Oct. 12, 7:00 p.m.
Program - Chantilly, led by Diane Gary
- November Meeting** - Tues., Nov. 9, 7:00 p.m.
Program - Nearcut, Part II, led by Frank Wollenhaupt and Dave Rankin
- Christmas Party** - Friday, Dec. 10, 6:00 p.m.
At Phyllis Smith's

Show and Tell items displayed included: #1327 favor vase, unknown green color; #66A banana bowl; Caprice Alpine powder jar; Two-Kid flower frog; Chantilly footed oil with Sterling Silver stopper and foot; oil with unknown etch; Rubina mayonnaise; Rubina 10" vase; 6" Crown Tuscan globe vase with gold-encrusted Portia; 7" Helio comport; Pristine cocktail icer; Rubina 10" footed bowl.

The theme of this year's pig roast was a luau. As members arrived, they were presented with leis by the host and hostess. Decorations and Hawaiian music set the mood. One of the highlights of the day was the arrival of John and Helen Wilt in a 1920 Model A Ford decorated in a Hawaiian theme. The fenders sported grass skirts, the headlights were big eyes with long lashes, and crepe paper and luau decorations were draped everywhere. It became the scene of much picture taking, and Frank Wollenhaupt, looking like something out of Chitty Chitty Bang Bang, took youngsters for rides around the park. Helen Wilt was in charge of games. The men were challenged to create leis from a variety of craft materials. The prize, a coconut, was won by Bill Dear. The women participated in a hula contest, which was won by Celia Dear. Her prize was a pineapple.

We all had great fun!

—submitted by **Judy Rhoads, Secretary**



Study Group #16 Elegant Glass Collectors

The Elegant Glass Collectors met September 25, 1999, at the home of Charlie and Loretta Weeks. Members attending were: Bud and Anna Walker, Windsor and Laura Tracy, Pam Earussi, Charlie and Loretta Weeks, Terry Roh, Bill and Lesley Connor, John Corl, Ken and Jane Filippini, Don Stevens, Dean and Kathy Stolberg, and Bill and Yvonne Dufft.

Following a short business meeting in which it was decided that our theme for the Harrisburg display would be red, white, and blue, we enjoyed a marvelous presentation by Dean Stolberg. Dean is a cordial collector, and he brought some of his cordials to display. Other study group members also brought their cordials. Many different companies were represented; among them Tiffin, Heisey, Morgantown, Duncan Miller, and even a Mosser cordial glass was displayed, along with Cambridge cordials. An interesting comparison was noted among the Cambridge Heatherbloom, Fostoria Wisteria, Heisey Alexandrite, and the Mosser Alexandrite. Tiffin Twilight was also displayed.

The meeting was followed by antipasto and lasagna.

The Eastern National Show at Harrisburg is scheduled for November 19, 20, and 21. We hope to see many of you there at our display and book table. We will be in a different location this year, on the back wall.

Our holiday meeting will take place on Sunday, Dec. 19, at 1:00 p.m. Members are asked to bring a small gift.

P.S. The theme of red, white, and blue is to celebrate the next century.

—submitted by **Pam Earussi**

CAMBRIDGE GLASS BOOKS FOR SALE

By National Cambridge Collectors, Inc.

Colors in Cambridge Glass

128 pages, 60 color plates, full index.

Hardbound/valueguide 19.95

1910 Nearcut

108-page reprint of original 1910 catalog PB w/valueguide 14.95

1930-1934 Cambridge Glass Co. Catalog Reprint

250-page reprint of original catalog PB w/value guide 14.95

1949-1953 Cambridge Glass Co. Catalog Reprint

300-page B&W reprint of original catalog. B&W paperback with value guide 14.95

Cambridge Caprice

200-page book illustrating one of the most popular lines of Cambridge Glass. Lists color, decorations, reproductions and rare pieces

Paperback with value guide 19.95

1940 - 1941 Cambridge Glass Co. Catalog Reprint

250-page reprint of original catalog and all well known supplemental pages. Drilled, ready for placement in your own three-ring binder.

Due to its size, the reprint does not include a value guide. B&W 34.95

Special price thru December 31, 1999 (no discount on this price) 25.00

Cambridge Rose Point by Mark Nye

94-page book listing of Rose Point from several sources: catalogs, trade journals, price lists, etching plates, and other surviving company records. One of the most popular lines of The Cambridge Glass Company, showing the many blanks on which Rose Point might be found along with the history and production life of the line. B&W paperback with valueguide 14.95

Etchings by Cambridge, Vol. 1 By the Miami Valley Study Group

84-page book showing samples of plate etchings applied by The Cambridge Glass Company. B&W paperback. Due to the style of publication this book does not have a value guide 14.95

The Home of "Near-Cut" Factory Post Card

B&W picture of The Cambridge Glass Company post card 50

Crystal Lady Video

Approximate 25 minute video copy of old Cambridge Glass Co. film showing the making of a goblet in the Cambridge factory 15.00

Rose Point Value Guide (Included with Rose Point Book purchase)

Value guide only includes postage 5.00

N. C. C. Members can purchase the above publications at a 10% off

Other books on Cambridge Glass

Cambridge Glass 1927-1929 by Bill and Phyllis Smith

66-page reprint of original catalog. B&W paperback

with updated value guide 7.95

Cambridge Stemware by Mark A. Nye

167 page book showing as many known Cambridge stems known at the time of publication. B&W paperback. No value guide 19.95

Cambridge Glass Company by Mary, Lyle and Lynn Welker

120 pages of reprints from eight old catalogs. B&W paperback.

No value guide 10.00

Cambridge, Ohio Glass in Color II by Mary, Lyle and Lynn Welker

15 Color plates showing choice pieces from their collection.

Spiralbound. No value guide 5.95

Cambridge Glass Company 1903 by Harold & Judy Bennett

106-page reprint of original catalog. B&W paperback N/value guide 5.00

Reflections by the Degenhart Paperweight & Glass Museum

45-page book giving a history of all 18 glass companies in Guernsey County. B&W paperback with pictures 5.00 including postage

address orders to:

Books, National Cambridge Collectors, Inc.

P. O. Box 416

Cambridge, OH 43725-0416

Please add postage and handling to your order (first book, \$3.00; each additional book \$1.00). Ohio residents add 6 1/2% state sales tax.

Only check or money order. NO CASH, NO CHARGE CARDS.

Dealer Discounts Available. Please Write!

OTHER ITEMS FOR SALE FROM THE NATIONAL CAMBRIDGE COLLECTORS GLASS MUSEUM

Brochures:

Chantilly	25
Laurel Wreath	10
Lynbrook	10
Martha	25
Rondo	10
Roxbury	10
Star	10

Please include SASE for above brochures

1999 Museum Fund Raising project - Scottie Dog Bookends made in original Cambridge Molds, by Mosser Glass. Made in a moonlight (light) blue color, both in frosted or unfrosted. Marked with N.C.C., date and Mosser logo. Either plain or frosted (Ea. pair) 100.00

Please include \$10.00 shipping and handling.

Ohio residents include \$6.50, per pair, for Ohio State Sales Tax.

The following Convention Favors are marked with the N C C name & yr.

Convention favors

1988 Cobalt, Cambridge Square Cigarette Holder	2.00
1994 Crystal Iridized, Cascade Goblet	5.00
1995 Cranberry Ice, Cascade Goblet	5.00
1996 Carnival, Cascade Goblet	5.00
1998 Yellow Iridized, Cascade Goblet	5.00
1999 Crystal, Opal Edge, Cascade Goblet	5.00
Prism with "Cambridge" on one side. Fund raiser, Mint Julep	15.00

Please include \$3.00 shipping & handling on each order of 5 items

Books by Gene Florence

Hardbound color with value guides

Very Rare Glassware of the Depression Years (Third Series)	24.95
Very Rare Glassware of the Depression Years (Fourth Series)	24.95
Very Rare Glassware of the Depression Years (Fifth Series)	24.95
Elegant Glassware of the Depression Era (Eighth Edition)	19.95
Collectible Glassware 40s50s60s (Fourth Edition)	19.95
Stemware Identification, featuring Cordials, 1920s-1960s	24.95

Shipping is \$3.00 for first book and \$1.00 for each additional book

Salt & Pepper tops, Polycarbon plastic, will fit most regular sized Cambridge shakers such as Rose Point ftd and flat bottomed shakers. Also fit Heisey Rose, Saturn, Plantation, Crystalite and some Orchid. Fit some Anchor Hocking and Candlewick. made from the same material used to make taillight lenses for autos.

Price: 1 to 9 pairs @ \$6 per pair - 10 or more pairs @ \$5 per pair

Shipping & Handling is \$3.00 per order on S&P tops

Send all orders to:

National Cambridge Collectors, Inc.

P. O. Box 416

Cambridge, Ohio 43725-0416

~ GLASS ~ MARKETPLACE

Classifieds

WANTED: CAMBRIDGE SWANS, all types, sizes, and colors including Cambridge swan punch cups. **Contact:** Dale Nash, 1940 Barber Drive, Stoughton, WI 53589. Phone 608-873-9294.

FOR SALE: Assorted Cambridge Crystal and Candelabra, big footed bowls, plates, vases, candy dishes. Helen Lenhart, 1531 Zener St., Pocatello, ID 83201. Phone 208-237-0639.

Recent Finds

Looking for recent "finds."

Have you found something recently that you would like to share the fun and excitement of with other members??

We would love to see!! Please send photos...or even just tell us about it!

Bogart's Bed & Breakfast

62 W. Main Street, New Concord
New Concord lodging in 1830 Federal
Style home, decorated with
antiques throughout.



Bogart's Antiques
7527 E. Pike, Norwich OH
Quality Antiques Bought & Sold

OWNERS: Jack & Sharon Bogart
872-3514 or 826-7439

WE CLEAN CLOUDY GLASS! SATISFACTION GUARANTEED

Yes, it is true that we really can restore the interior of your cruet, vase, decanter and other internally etched items back to near original condition.

We do not oil, wax or cover up the sickness in any way! We actually remove it.

No items are too sick to clean! If we cannot clean an item to meet your satisfaction, the cleaning is FREE!

Send no money up front. When we return your item a bill will be enclosed for the postage and cleaning. If you are not satisfied, only the return postage is requested.

Most items clean in 7-8 weeks. All glass is handled and cleaned at your risk. Some very cloudy items may take several additional weeks.

Cocktail Shaker	\$35.00	Salt Shaker (1)	\$25.00
Cologne	\$27.50	Salt Shaker (2)	\$42.50
Cruet	\$27.50	Vases (under 10")	\$30-\$35.00
Decanter	\$35-\$45.00	Vinegar & Oil	\$30.00
Lavendar Jar	\$25-\$35.00	Water Bottle	\$30-\$40.00

Ship to: Kim Carlisle & Associates
28220 Lamong Road, Dept. C
Sheridan, IN 46069
(317) 758-5767

kcarlisl@indy.net

1999



Stems Without Thorns

As the world's largest supplier of old & new china, crystal, silver and collectibles, Replacements, Ltd. has more than 700 different patterns of Cambridge crystal.

And however much we enjoy selling pieces that were once thought irreplaceable, we love buying them as well. Thanks to people like you, our crystal inventory currently numbers in the hundreds of thousands, and the numbers keep growing every year.

So, if you've been unsuccessfully searching for that elusive piece of Cambridge — or any other type of fine crystal — call us for a free list of pieces available in your pattern. And, if you're looking to sell pieces you currently have, we can help you there, too.

REPLACEMENTS, LTD.
China, Crystal & Silver • Old & New

1-800-REPLACE
(1-800-737-5223)

1089 Knox Road,
PO Box 26029, Dept. CB,
Greensboro, NC 27420
www.replacements.com

DEALERS



DIRECTORY

NOTE: When writing to the dealers listed here, please enclose a SASE!

<p>DAUGHERTY'S ANTIQUES Jerry and Shirley</p> <p>Antiques and Collectibles * Mostly Glass</p> <p>Shows & Mail Orders 2515 Cheshire No. 402-423-7426 Evenings Lincoln NE 68512</p>	<p>YOU CAN ADVERTISE YOUR ANTIQUE SHOP HERE!</p>	<p>THE JONES GROUP Cindy Jones</p> <p>Buy and Sell Cambridge Glass 650 Riverside Drive Sleepy Hollow, NY 10591 914-631-1656 or E-Mail Caprice0@aol.com</p>
<p>Milbra's Crystal Replacement and Matching</p> <p>Buy & Sell Specializing in Cambridge Fostoria Heisey and others</p> <p>Milbra Long (817) 645-6066 Emily Seate (817) 294-9837 PO Box 784, Cleburne, TX 76033 E-mail: longseat@flash.net</p>	<p>CRYSTALLINE COLORS Buy, Sell, and Appreciate Cambridge and Other Elegant Glass I Love Cambridge</p> <p>Lynne R. Franks 216-661-7382 Ohio & Western PA Antique Malls</p>	<p>Mary Jane's Antiques Mary Jane Humes</p> <p>2653 Burgener Dr., Decatur, IL 62521 Glass: Cambridge, Fostoria, New Martinsville, Duncan Miller, Imperial and Early Pressed mjhumes@aol.com 217-422-5453</p>
<p>THE GLASS URN 456 West Main Street, Suite G Mesa, AZ 85201 602-833-2702</p> <p>Mail Order Shows Open Shop</p> <p>CAMBRIDGE, FOSTORIA, HEISEY, ETC.</p>	<p>YOU CAN ADVERTISE YOUR ANTIQUE SHOP HERE!</p>	<p>GATEWAY ANTIQUE MALL, INC. JUST NW OF MINNEAPOLIS-ST. PAUL, MN Next to Super 8 in Rogers, MN (I-94/101 Intersection)</p> <p>85 Dealers 7 Days, 10-6 612-428-8286 ELAINE STORCK, OWNER/DIRECTOR</p>
<p>THE DEGENHART PAPERWEIGHT AND GLASS MUSEUM, INC.</p> <p>P. O. Box 186 Cambridge, Ohio 43725-0186 Intersection of US 22 & I 77 Phone 740-432-2626</p>	<p>D & D ANTIQUES</p> <p>Columbus, Ohio</p> <p>Dick Sifko SHOWS ONLY</p>	<p>JAMESTOWN ANTIQUES 16 E. Washington St., Jamestown, OH 45335 Rosepoint and Cambridge our Specialty</p> <p>Buy (937) 675-6491 Sell Susan and Larry Everett</p>
<p>THE GLASS CUPBOARD P. O. Box 652 West End, North Carolina 27376</p> <p>Marcia Ellis 910-673-2884 or winter 941-379-3302</p> <p>Cambridge Show and Mail Order</p>	<p>JUDY'S ANTIQUES Judy Bennett 422 S. Ninth Street (Corner of Jefferson) Cambridge, Ohio 43725 Bus. 740-432-5855 Res. 740-432-3045</p> <p>CAMBRIDGE GLASS MY SPECIALTY</p>	<p>Horse'n Around Antiques Kelvin and Heather Moore Exit 69 on Interstate 64 Woodlawn, IL 62898 e-mail: hmoore@midwest.net TEL: 618-735-9114</p> <p>Specializing in Cambridge and other Elegant Glass</p>
<p>FINDER'S ANTIQUE HOUSE 3769 Highway 29 North Danville, VA 24540 (804) 836-6782 Cambridge-Heisey-Duncan-Fostoria</p>	<p>GREEN ACRES FARM 2678 Hazelton Etna Rd., Pataskalia, OH 43062 (State Route 310 North)</p> <p>Sat & Sun 1-7 PM 740-927-1882 Antiques, Crystal Glass and Collectibles</p>	<p>CRYSTAL LADY 1817 Vinton St., Omaha, NE 68108</p> <p>Bill, Joann, and Marcie Hagerty Bus. 402-341-0643 Res. 402-391-6730 Specializing in Elegant Glass & Collectibles</p>
<p>YOU CAN ADVERTISE YOUR ANTIQUE SHOP HERE!</p>	<p>YOU CAN ADVERTISE YOUR ANTIQUE SHOP HERE!</p>	<p>PENNY COURT MALL 637 Wheeling Avenue Cambridge, Ohio 100 Booths 15,000 sq. ft. HOURS: Daily 10-6 Sunday Noon-5 Closed: Easter, Thanksgiving, Christmas Call for Other Holiday Hours 740-432-4369</p>
<p>MICHAEL KRUMME Cambridge and other elegant glassware</p> <p>(323) 874-GLASS e-mail: mkrumme@pacbell.net website: http://www.glassshow.com</p> <p>PO Box 48225 Los Angeles CA 90048-0225 Send your want list</p>	<p>Warren and Mary Welsh Cambridge & Other Elegant Glassware</p> <p>3635 Saddle Rock Rd., Colorado Springs, CO 80918 (719) 531-5866 WELS@EARTHLINK.NET</p> <p>MAIL ORDER SHOWS</p>	<p>MARGARET LANE ANTIQUES</p> <p>2 E. Main St., New Concord, OH 43762 Lynn Welker 740-826-7414</p> <p>Cambridge Glass Matching Service Hours Mon-Fri 10-12 AM, 1-5 PM or by Appointment</p>
<p>ISAACS ANTIQUES (740) 826-4015</p> <p>See our booths in Penny Court Mall in Cambridge and White Pillars Antique Mall at Rt. 40, one mile west of I-70 Norwich Exit #164</p>	<p>ALADDIN LAMP BOOKS Free List Figurine Lamps Wanted Bill & Treva Courter</p> <p>3935 Kelley Rd. Kevill, KY 42053 Phone/FAX 502-488-2116</p>	<p>DEXTER CITY ANTIQUE MALL</p> <p>P. O. Box 70, Dexter City, Ohio 45727 (740) 783-5921</p> <p>Located on Ohio St. Rt. 821 Between Exits 16 & 25 off I-77 Just 30 min. South of Cambridge, Ohio</p>

NUMBER ONE GLASS SHOW IN U.S.

**EASTERN NATIONAL
ANTIQUES SHOW & SALE**

**MORE THAN 300 BOOTHS OF
QUALITY ANTIQUES
FEATURING**

**Silver * Jewelry * Clocks & Watches
Decorative Accessories * Toys & Dolls
Collectibles * Prints * Books
Primitives * Bronzes * Glass * China
Pottery * Fine Porcelains * Lamps
Americana and much, much more**

NOVEMBER 19, 20, 21, 1999

Friday: 11 a.m. to 7 p.m.

Saturday: 11 a.m. to 6 p.m.

Sunday: 11 a.m. to 5 p.m.

STATE FARM SHOW COMPLEX

Exit 23, I-81

Cameron & Maclay Streets

HARRISBURG, PA

SPECIAL EXHIBITS

- National Cambridge Collectors Club
- H. C. Fry Glass Society
- Early American Pattern Glass Society
- Sylvio the Glassman Glass & China Repair

**Admission \$5.50
(\$5 with this card)
(Good all 3 days)
* Free Parking ***

Show Information:

610-437-5534

610-435-4649

During Show:

717-783-2815

**National Cambridge Collectors Inc
PO Box 416
Cambridge OH 43725-0416**

**<http://www.cambridgeglass.org>
e-mail: NCC_Crystal_Ball@compuserve.com**

**FIRST CLASS MAIL
U.S. POSTAGE
PAID
PERMIT NO. 1
CAMBRIDGE, OH**

FIRST CLASS MAIL

Membership Renewal Notice

**If the date on your address label is 11-99,
this is your LAST ISSUE of the Crystal Ball.
Please take a moment and renew now. Thank you!**