



Cambridge Crystal Ball

Published monthly by National Cambridge Collectors, Inc.
to encourage and report the discovery of the elegant and boundless product of the
Cambridge Glass Company of Cambridge, Ohio

Issue No. 352

August 2002

The *GRAND OPENING*



Nearly 300 people from all over the United States crowded in and around The National Museum of Cambridge Glass for the Grand Opening festivities on Thursday, June 27, 2002, in Cambridge, Ohio.

National Cambridge Collectors, Inc. president Rick Jones opened the celebration with welcoming remarks to the gathering made up of local community residents, NCC members, and interested visitors. Following Rick's remarks, Shelley Citron led everyone in the singing of the National Anthem.

(Continued on page 4)

Inside This Issue:

The Culmination. For Now
NCC Convention 2002
100 Years. 100 Goblets?
Century Club Update
Lyre Candlestick

Cambridge Crystal Ball

Official publication of National Cambridge Collectors Inc., a non-profit corporation with tax exempt status. Published once a month for the benefit of its members. All rights reserved, reproduction in whole or in part without written permission of NCC and the author is prohibited. Membership is available for individual members at \$20.00 per year and an additional \$3.00 for associate members (12 years of age and older, residing in the same household). Of the master member dues, \$14.00 is credited to a one-year subscription to the *Crystal Ball*. All members have voting rights, but only one *Crystal Ball* per household. Multi-year memberships are available: 2 years for \$38.00, 3 years for \$56.00.

2001-2002
OFFICERS AND COMMITTEE CHAIRPERSONS

| | |
|---|--|
| President | Richard D. Jones |
| Vice President | Tarzan Deel |
| Secretary | Ken Filippini |
| Treasurer | Dennis Snyder |
| Sergeant-at-Arms | Charles Upton |
| Acquisitions | Lynn Welker |
| Budget & Finance | Mike Strebler |
| By-Laws | Bud Walker |
| Corresponding Secretary | Charles Upton |
| Endowment | George Stamper |
| Facilities | Carl Beynon, Joe Miller |
| Grants and Fundraising | Sharon Miller |
| Long-Range Planning | Mike Strebler |
| Member Services | George Stamper |
| Membership | Larry Everett |
| Museum | Cindy Arent |
| Nominating | Tarzan Deel |
| Non-Glass Items | Carl Beynon, Bill Hagerty |
| Program | David Ray |
| Projects | Bill Hagerty |
| Publications | Mark A. Nye |
| Publicity | Cynthia A. Arent |
| Study Group Advisor | Ken Filippini |
| Technology | Linda Roberts |
| WebMaster | Linda Roberts |
| 2002 Convention | Mark A. Nye |
| 2002 Auction | Squeek and Dorothy Rieker, Lynn Welker |
| 2002 Glass Show | Mary Beth Hackett, Joy McFadden |
| 2002 Glass Dash | Larry and Susan Everett |
| <i>Crystal Ball</i> Editor | Lorraine Weinman |
| <i>Crystal Ball</i> Circulation Directors | Sharon and Joe Miller |

Internet website www.cambridgeglass.org

THE NEW NATIONAL CAMBRIDGE COLLECTORS MUSEUM AT 136 SOUTH NINTH STREET IN CAMBRIDGE, OHIO, IS NOW OPEN.

THE NCC MUSEUM DISPLAY IS STILL LOCATED ON WHEELING AVENUE IN PENNY COURT MALL IN DOWNTOWN CAMBRIDGE, OHIO.

ADVERTISING RATES
(effective November 1, 2001)

Display Rates (camera ready ads preferred)

| Unit | Rate |
|-----------|---------|
| Full Page | \$50.00 |
| 3/4 Page | \$40.00 |
| 1/2 Page | \$30.00 |
| 1/4 Page | \$20.00 |
| 1/8 Page | \$15.00 |

(\$5.00 additional if a photograph is included in display ad)

Classified Rates

10 cents a word \$2.00 minimum

Abbreviations and initials count as words. Type sizes cannot be mixed in classified ads. **Payment in full must accompany all ad copy.** Contact Editor for copy assistance.

Dealer Directory

Six Line Maximum \$24.00 for 12 month contract
Also included - Listing on our Internet site at:
www.cambridgeglass.org

Cambridge *Crystal Ball* assumes no responsibility for items advertised and will not be responsible for errors in price, description, or other information.

Advertising copy, letters, articles, must be received by the 5th of preceding month to be considered for publication in the next issue.

Opinions or information stated in any signed article or letter printed in the *Crystal Ball* are those of the author and may not agree with National Cambridge Collectors, Inc. The Editor reserves the right to refuse and to edit any material submitted for publication to conform to the editorial style of the *Crystal Ball*. Members are encouraged to write to NCC and the *Crystal Ball* sharing their knowledge and questions.

Please address all correspondence (include SASE) to:
(or E-Mail NCC_CrystalBall@yahoo.com)

National Cambridge Collectors, Inc.
P.O. Box 416
Cambridge, OH 43725-0416

| | |
|----------------------------|---|
| President Rick Jones | 914-631-1656 |
| Vice President Tarzan Deel | 540-869-3949 |
| Secretary Ken Filippini | 201-670-0990 |
| Membership | email: db0098@dragonbbs.com |
| NCC Museum: Phone | 740-432-4245 |
| Fax | 740-439-9223 |

Please notify us immediately of any address change.

Obituary Policy: (Effective November 1, 2001) Obituary notices of ¼ page or less will be printed free. Larger notices will be billed at the standard display ad rate.

**2002
Calendar Planning**

August 24, 2002
August Quarterly Meeting
Theo's Restaurant (formerly The Coney Island)
Cambridge, Ohio

November 2, 2002 (tentative)
November Quarterly Meeting
Education Program
To Be Announced
Cambridge, Ohio

MARK YOUR CALENDAR NOW ...



**THE NATIONAL MUSEUM OF
CAMBRIDGE GLASS
IS NOW OPEN!**

136 South Ninth Street in Cambridge, Ohio

The museum is handicapped accessible with plenty of parking. It is open April through October: Wednesday - Saturday, 9 a.m. to 4 p.m.; and Sunday, noon to 4 p.m. Closed Easter and July 4. Admission: Adults, \$2; Members and children under 12, free. Phone 740 432-4245.

President's Message



The Culmination, For Now

Having just returned from our 2002 annual Convention, it is easy to be consumed with an enormous sense of pride for our organization. Just four years ago we were devastated by a flood that inflicted permanent damage to our Museum. But quickly, remarkably, the club mobilized to rebuild – even stronger, even better.

As I'm sure the rest of this issue will show, we held the official Grand Opening celebration. And what a celebration it was. The fact that it rained heavily that afternoon and forced much of the planned program to move inside, had a heavy dose of poetic irony. Storms like this are what prompted the need for a new museum, so somehow it seemed oddly appropriate that this kind of weather would now herald our rebirth.

Without a doubt, this achievement is a milestone for our preservation organization. Maintaining a museum is a flagship in the overall mission success, but it is only part of what we do. However, given the magnitude of the challenge, it is appropriate to pause and revel in our accomplishments.

As I said in my opening remarks, we would not have been in this position without the active and selfless contributions from scores of members and friends. It started early on with those persons who helped at the museum immediately after the flood. Support came from DG clubs and individuals around the country who gave to our museum recovery process.

It continued on as we sought to grow a Building Fund that years before had been gratefully established - a strategic plan was set in motion. Now, our urgency had been amplified. Sharon Miller, Cindy Arent, and others began developing both museum plans and fundraising efforts. We received room-naming gifts that helped us buy the building.

Then, the membership and DG clubs again rallied as we began a showcase-naming gift program. Each of them were thrilled by the outcome of the quality work done by Mr. Edwards and his team. Our cases are beautiful and so successful at showing the absolute beauty of Cambridge Glass.

And this year, we have been so pleased and gratified with the member support of the new Century Club program. I know that many of the people who gave have never been to the museum, never may, but saw this as a chance to have a "piece of them" forever etched as part of our museum's history. I thank each and every one of you, who have supported our museum in any way.

It was great that we could recognize some very special people at the Grand Opening. Cindy Arent and Carl Beynon so deserved the honor of cutting the ribbon. They have lived this museum for the past two years and I have no idea where we would be without their love and hard work.

Willard Kolb who was president at the time we opened our first museum was recognized with a lifetime membership in NCC.

Woody has helped this club in so many extraordinary ways that this was an overdue and so deserved recognition.

The same applies to Charles Upton who was shocked when we announced at the Annual Meeting that he too was named a lifetime member by our Board of Directors. Charlie was NCC's founding president and has served so ably and remarkably as our treasurer for the past six years. We would not have been in the financial position to make this museum happen without Charlie's superb stewardship.

These announcements were made more melancholy by knowledge that this year, our club lost two lifetime members, Phyllis Smith (a past *Crystal Ball* editor and membership chair) and Paul White (our poet laureate). Also, we lost another past *Crystal Ball* editor – Sue Rankin. Phyllis and Sue's achievements are fundamental to the fabric of where our club is today - the knowledge we have built, and the commitment to excellence they sought. This is evident not only in the *Crystal Ball*, but in all club endeavors including membership, study groups, and educational programs. We will forever be in debt to them all for making our club a better place.

And finally, I want to thank Jane and Ken Filippini for coordinating our Grand Opening celebration. Their mobilizing of many resources of our study group network is real testimony to what we can accomplish when we all work together. Our thanks to the Miami Valley Study Group, the Wildflowers, the Cordials, the new Virginia group, and North Texas for banding together to make this event special.

This spirit of accomplishment and mission is what will help NCC continue to grow and prosper as our work does not end with the new Museum. There is so much more to do. Tarzan Deel and I would like to thank the Board and membership for their vote of confidence in reelecting us for another year. We will work hard to keep this spirit alive, well organized, and motivated to do even more as an organization.

Deel

Have a question you would like answered?

Is there something that you would like to share with fellow NCC members?

Send your correspondence to the *Crystal Ball* c/o the NCC address.

We'd like to hear from you.

2002-2003 NCC Board of Directors



Front (left to right) George Stamper, Lorraine Weinman, Lynn Welker, Cindy Arent, Sharon Miller Back (left to right) Charles Upton, Mike Strebler, Ken Filippini (secretary), Rick Jones (president), Tarzan Deel (vice president), Dennis Snyder (treasurer) Not present in photo: Bud Walker

LETTERS FROM MEMBERS AND FRIENDS

Dear Mark -

I very much enjoyed the convention. I've attended the show/sale the last 3-4 years and have been an NCC member about the same length of time. I decided to "officially" attend this year as an NCC member - first-timer - since I never registered before.

I also joined the Cambridge Cordials in order to learn more about Cambridge Glass. The Cambridge Cordials have made me feel very welcome and I appreciate that.

I hope to be more involved with the Cambridge Cordials and NCC in the next year.

Thanks,
Kay

Rick Jones then outlined the history of NCC and its first museum and led into the details of the birth of the new museum. He then introduced Cindy Arent, the Museum Committee Chair, who spoke about the building and support for this great new museum. Following Cindy, Lynn Welker was introduced and thanked those who worked on the previous museum. Willard Kolb was recognized and given lifetime membership. He offered some remarks about the previous museum as well as to the opening of our new Museum.

At that point, Rick Jones gave special recognition and thanks to the treasurer/corresponding secretary, Charles Upton; the director of facilities, Carl Beynon; and the museum chair, Cindy Arent. He presented them with a plaque which is to be hung in the Museum to honor all the tireless hours of work and dedication they have put into the completion of the Museum.

Carl Beynon and Cindy Arent had the honor of cutting the ribbon for the Grand Opening. It was apropos that the scissors used were two pair of original Cambridge Glass Company glass cutting shears which were used in cutting glass when it was gathered to fill the molds for each item of glass.

A wonderful assortment of refreshments was then served to those present.

The Grand Opening event was sponsored by the joint efforts of the NCC study groups spearheaded by Ken and Jane Filippini. Their hard work and efforts were a success! The Grand Opening will be remembered by all for years to come and is now a part of the history of our club's new Museum.

Thanks to all who have made this possible!

IN MEMORY OF SUSAN RANKIN

Susan Rankin passed away Tuesday, June 11, after a long and courageous battle with cancer. She had been a member of NCC over 27 years. Sue was a member of the Miami Valley study club. She contributed to both the Cambridge Color book and the first volume of Etchings by Cambridge. Sue was the editor of the *Crystal Ball* for a number of years. She was a CPA and the executive director of the Frank M. Tate Foundation for over 27 years and worked with various charitable organizations. She enjoyed traveling and golf and working on her family history. She was a member of the Lewisburg United Methodist Church and the church choir where she often performed solos. Sue's footsteps across this earth are deep and will be remembered by her family and friends.

—submitted by Vicki Wollenhaupt

NCC Convention 2002

A Celebration to Remember

Hundreds of National Cambridge Collectors, Inc. members and other glass enthusiasts converged on Cambridge to celebrate several events. This year marks the 100th year since the first production of glass by the Cambridge Glass Company in Cambridge, Ohio, and also heralds the opening of the wonderful new National Museum of Cambridge Glass at 136 South Ninth Street.

Registered attendees along with other interested participants toured Cambridge area glass factories, antique stores, museums, and businesses getting to know the area. For those who arrived early, there was a Dutch-Treat dinner at the China Village Restaurant on Wednesday evening. Registration opened Thursday morning. Approximately 241 members were registered for this year's convention.

The Smith Auction took place at the Convention site (though it was not sponsored by NCC). Many members got warmed up to buying glass by attending this wonderful auction which was part of the collection of the late Phyllis and Bill Smith.

Early Thursday afternoon, a record-setting number of first-timers attended an orientation session where 25 members had volunteered as mentors. The successful mentoring program was organized by Ken and Judy Rhoads and this orientation session was led by Bud and Anna Walker. There were 32 first-timers registered. This is the largest number to date. This was an opportunity for those new to Cambridge and the NCC Convention to get to know others, share information, and ask

questions. Of the 24 first-timers from last year, 13 returned this year. Twenty-eight states were represented – from California and Washington to Florida, Massachusetts, and Connecticut. Ohio had the most attendees, followed by Michigan with 17 and Indiana with 16.

The Grand Opening of the new Museum was Thursday evening with nearly 300 people participating in the ceremony. The Museum houses many examples of the wide variety of Cambridge glass as well as several display rooms and a display on the glass-making process. The "rotating display room" currently contains a superb collection of Caprice glass. The celebration activities were organized by Ken and Jane Filippini with the joint effort of the study groups sponsoring the event. See the cover page story for more information about this. Among other recognitions, Willard Kolb was awarded lifetime membership.



Mark Nye, Convention chairman greets attendees at the registration desk.



Front row (left to right) Diana Rizzo, Linda Speakman, Ida Mae Prichard, Susan Olpe, Marcia Feldman, Linda Gilbert, Janet Switzer, Stephanie Feeik, Sallie Holder, Ruth H. Flaver
Second row: Charles Rizzo, Ron Kotlarz, Halla Kotlarz, Peter Olpe, Catherine Essenmacher, Lowell Essenmacher, Richard Switzer, John Feeik, Tim Cook, Robin Cook, Jim Rose, Pam Rose.

On Friday, the activities continued with a meeting of the various Cambridge glass study groups from all over the United States. Ken Filippini led this combined study group conversation. There will be more printed on this in the next issue. Later, the Miami Valley Study Group presented an educational program about candlesticks throughout the history of the Cambridge Glass Company to a standing-room-only crowd. This program was led by Georgia Otten, Larry Everett, and Frank Wollenhaupt. Using historical events, period music, trivia, and the glass from each of the periods of time of glass production, the program was not only informative, but entertaining.

The well-known Glass Show and Sale opened its doors at 2 that afternoon to interested buyers and lookers who had started gathering early that morning in order to have the first opportunities at rare and wonderful pieces of glass that many dealers from across the country had to offer. From comments that were heard, the dealers seemed pleased with this year's sales and the buyers were thrilled with some of the prizes that they had purchased and were taking home with them.

The dinner Friday evening had record-setting numbers as well. A door prize (a copy of the Cambridge stemware book) was won by John

(CONVENTION—Continued from page 5)

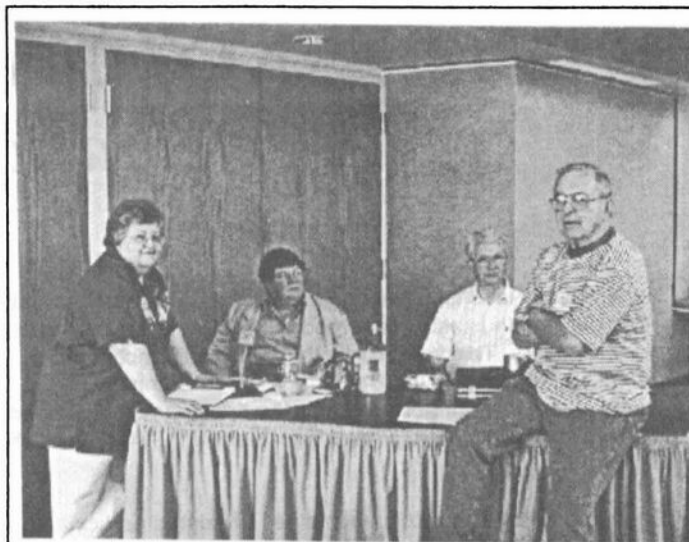
Peterson In a 50/50 drawing conducted by the Cambridge Cordials Study Group, Phil Cole won half of the \$400 pot, which he donated back to the Century Club. Several silent auctions during the evening resulted in \$2,950.

The National Cambridge Collectors, Inc. annual meeting was held following the dinner. Election results were announced for this year's board members. Two previous board members, Charles Upton and Lorraine Weinman were reelected, and Mike Strebler from South Carolina was elected to join the board. This year saw the largest number of ballots ever returned, and the slate of those running was applauded for its quality. Lifetime membership was awarded to Charles Upton. Bill Courter, the Convention speaker in '94 who spoke on Henry Hellmers, presented one copy of the Hellmers' book of formulas and notes to the Museum to use for research. He also presented a second copy to auction to a member at sometime in the future. (For more information about Henry Hellmers' book, see Les Hansen's articles in the June 2002 issue of the *Crystal Ball*.) More about the annual meeting will appear in the minutes in another issue.

Saturday morning had an early start with 198 anxious glass collectors arriving as "early bird" buyers for the Glass Dash "flea market." This too was a record attendance number. Nineteen dealers provided many exceptional pieces of Cambridge Glass. This event realized \$2,010 for the NCC club.

Later in the afternoon the ever-popular "Glass Identification" and "Bring and Brag" sessions were held at the Pritchard Laughlin Civic Center. People crowded in to see glass identified as being either Cambridge glass or to discover what company had made pieces of glass that participants had brought. Then, they waited to see the beautiful, rare and unusual items which collectors brought to share with all. This year's sessions were led by Larry Everett, Georgia Otten, and Frank Wollenhaupt who commented on each of the items. In future issues you will have the opportunity to see some of this glass.

At the evening banquet, the speaker was glass authority Mark Nye who discussed Cambridge Glass through the years. Those present guessed the tunes as they were played by a pianist at a



Pictured above are Glass Show and Sale Co-Chairmen Joy McFadden and Mary Beth Hackett talking with Charles Upton and Willard Kolb. Both Charles and Willard were awarded Lifetime Memberships for the many years of service and contributions that they have given the NCC club.

grand piano. Mark shared some trivia and then identified the glass that was made during that era and remarked on what was going on in the Cambridge Glass Company. Mark also announced the winner of the "early bird" registration prize. About 75 people made the registration deadline to qualify. The reward was an Aero optic cup and saucer and a Dorothy punch cup which was won by Bill Courter. The door prize was actually four pieces representing the entire history of Cambridge Glass: an 856 goblet from the reopen period, a Cascade sugar from the 1950s, a Decagon creamer from the '20s and '30s, and a Near Cut whiskey from the very early years. This prize was won by Janice Laver. Another prize was also awarded. The Teddy Bear was also celebrating its 100th birthday, so Mark raffled off a Teddy Bear which Joy McFadden won.

The Former Cambridge Glass Company Workers' Reunion sponsored by the Cambridge Cordials Study Group finished up the Convention activities on Sunday afternoon. Over 33 former workers attended this gathering at the new Museum. They were able to visit and share stories about the glass company, tour the wonderful new museum, and discuss the displays. It was fun listening to the stories that the former workers were sharing. It was particularly enjoyable to hear a worker share information about how she worked on a piece of glass which she pointed out in one of the cases to a teen-aged girl. The young girl appeared to be interested and then started to point out other pieces that she found appealing. Two of the workers were also talking about their experiences working at the Cambridge Glass Company. One stated that she started off making about \$100 a month in the office. The other said she was making \$9 a week and that "making \$9 a week you could buy the best dress in town."

Convention is always a wonderful time of the year and a fun way to learn and share with people who have a common interest. Not everyone can make it to Cambridge in June. But, if you can, you should try to visit our new museum sometime soon. It is certainly a showplace of which every club member can be proud.

Start making plans now! If you can't join us in November for the educational meeting, try to arrange to be at Convention next June. It is an experience you will enjoy!

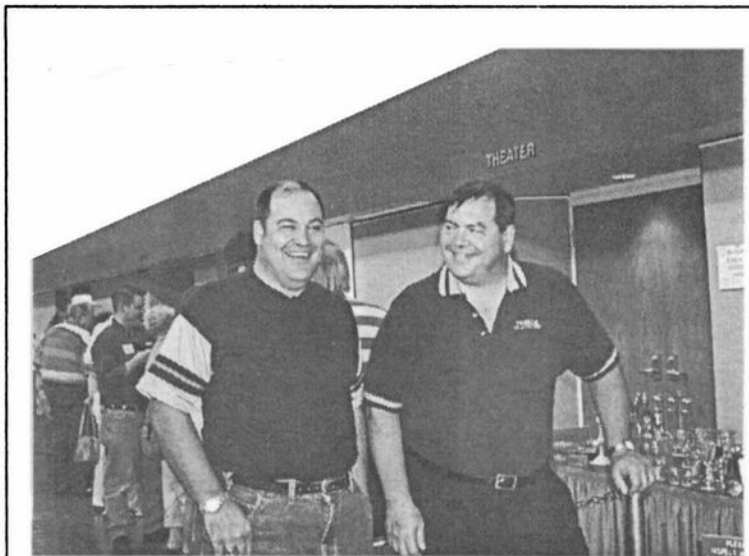


Above Frank Wollenhaupt, Larry Everett, and Georgia Otten conduct the Glass Identification Session to a standing-room-only crowd.

Former Workers Reunion



Pictured above are former workers of the Cambridge Glass Company front row (left to right), Marjorie H. Gardner, Shirley L. Barnett, Alice Holmes, Harriett "Sis" Cantor, Dorothy Golden, Faye Culbertson, Clara Valentine, second row, Dorothy Steele, Velva Vandenberg, Mary Sowinski, Alice Howell, Elva Voltz, Audrey McDowell, Barbara Hyde, Mary Wigginton, third row, Edna Nicholson, Jennie Selock, Evelyn Klass, White Klass, Mary Hölliday, Olga Berilla, Helen Lucas, Minnie Johns, Agnes Slay, fourth row, Fern Lengen, Ed Lehotay, Bill Boyd, Bob Selock, Raymond Shifko, Dan Slay, Harold Conrath, Vernon Mercer



Mark and Ed Smith take a few moments to pose for the camera at the Smith Auction. Although not sponsored by NCC, this event has been a high point for many for the past several years. All the glass has been from the collection of the late Bill and Phyllis Smith.



Cindy Arent, Museum Committee Chairman, is pictured above during the Grand Opening Celebration.



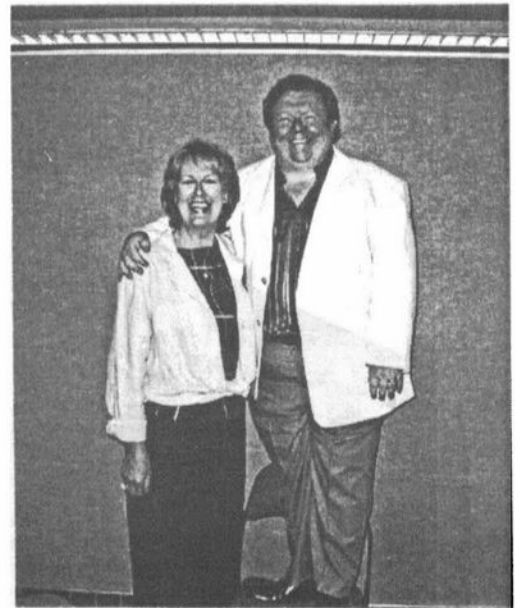
"What nice stems you have!" Jo Fogelson, Margaret and Ben Swindler enjoy the Saturday night banquet using their favorite stems



Below Frank Wollenhaupt, Lisa Strebler and Ron Hufford enjoy a moment!



First-timers Robin and Tim Cook from Auburn, Washington are below. They were second in line for the Glass Show & Sale - a major accomplishment for first-timers!



**Some Quick Glimpses
from the
Saturday Night Banquet**



100 Years, 100 Goblets?

by Georgia G. Otten

Once again another NCC annual convention is history. This year's convention was different from those in the past as the scheduling of events was changed, and we had the GRAND (and it was) OPENING of the museum, and the newly organized *Mentoring Program* was in operation.....good thing 'cause we had a record number of *FIRST-TIMERS* in attendance.

I believe there was a harmonious attempt by everyone for more interaction this year. This was visible in the high level of enthusiasm felt during the convention. In keeping with that, what better way to involve a first-timer than to take that person on a goblet check during the banquet? It was great! I not only had help from Linda Gilbert from Florida but also Marcia Feldman from Virginia. Linda and I were paired in the Mentoring program. She was very excited during the entire convention and seemed happy to run along side and help with goblet ID. Linda had made acquaintance of Marcia sometime during events and Marcia wanted to "do goblets" also. That was great! What fun the three of us had trying to weave our way through a labyrinth of tables encircled by people in party mode!

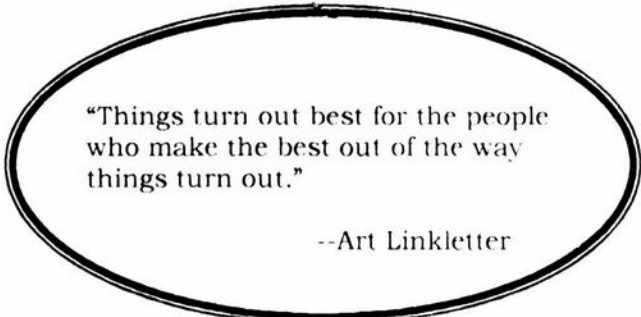
In addition to goblets, the three "checkers" found new items brought to the tables this year. We saw two wonderful cups and saucers from the Round line in Peach-Blo, etched #704, and there was a group that brought in their own place settings of Wallace sterling Rose Point flatware. Plus there were napkins with a transferred design of the etching Marjorie. One person at another table brought a Mt. V #24 6" comport and promptly filled it with mixed nuts! And by the way, the nine 3121 Rose Point goblets you will see in the listing were all at the same table! Don't the NCC conventioners just do it up right?

I want to most definitely add that Linda and Marcia, although first-timers to the convention, are certainly not novices. They were right in there identifying those stems! I just love it when a plan comes together.....thanks for the help!

So, 100 years, 100 goblets? Did we have 'em? Not quite. We had 57 though and had an example from the Nearcut era and examples from the '20s, '30s, '40s, and '50s. We hope that next year more goblets will be brought to the banquet! After all, if Disney can have *101 Dalmatians*, the NCC organization can certainly have *'101 Goblets'*. Don't forget to bring along your favorite goblet next year.

And now for the tabulated results from the 'firm' of Gilbert, Feldman and Otten. (May we have the envelope, please?) Here is the goblet check from the 2002 NCC Convention banquet:

| | | |
|---|----------|--|
| 2 | 300 | Caprice wines in Moonlight Blue |
| 1 | 400 | Caprice goblet |
| 2 | 1066 | goblet with Amethyst bowl |
| 2 | 1953 | goblet with silver Wheat |
| 1 | 2660 | goblet Nearcut Wheatsheaf |
| 2 | 3035 | goblets etch Candlelight |
| 1 | 3066 | goblet in Willow Blue w/unknown cutting |
| 1 | 3102 | 12 oz footed tumbler in Willow Blue |
| 1 | 3114 | goblet cut Candlelight |
| 1 | 3115 | goblet with Light Emerald bowl and etched Rosalie |
| 1 | 3116 | goblet with a variant of Minuet cut (?) |
| 1 | 3116 | goblet cut Candlelight |
| 1 | 3117 | goblet with unknown cutting |
| 1 | 3120 | goblet etch Apple Blossom |
| 1 | 3121 | goblet etch Portia |
| 1 | 3121 | 10 footed tumbler etch Rose Point |
| 1 | 3121 | goblet cut Achilles |
| 9 | 3121 | goblets etch Rose Point |
| 1 | 3122 | goblet with platinum band |
| 1 | 3130 | goblet cut Glendale |
| 1 | 3132 | goblet cut Classic |
| 1 | 3135 | goblet in Willow Blue etched Apple Blossom |
| 2 | 3500 | goblets etch Rose Point |
| 1 | 3500 | goblet cut Croeses |
| 1 | 3500 | 12 oz footed tumbler etch Chintz |
| 1 | 3775 | goblet cut Bijou |
| 1 | 3795 | Sweetheart goblet |
| 2 | 7606 | 12 oz tumblers etch Marjorie |
| 2 | 7606 | goblet etch Marjorie |
| 1 | 7801 | hollow stem champagne etch Marjorie |
| 4 | 1402/100 | goblet in Royal Blue |
| 4 | 1402/100 | tall sherbet Royal Blue with D/1007 goblet in Royal Blue |
| 1 | 1402/2 | 18 oz. goblet in Forest Green |
| 1 | Mt V | wine |
| 1 | Mt V | goblet in Amber |
| 2 | | Arcadia goblets |



Have you visited the NCC website lately?

Come See What's New

www.cambridgeglass.org

IN MEMORIAM

James E. (Jim) Kennon, a long-time NCC member, passed away Sunday, June 30, 2002, in Dayton, Ohio. Jim was also a member of Heisey Collectors of America.

Jim is survived by a son Jamie and a daughter Susan, as well as by two sisters, Norma and Patsy.

He will be missed by his family and glass collectors from both Cambridge and Heisey.

Past issues of the *Crystal Ball* are now available

These are available in sets by the year from 1999-2001
Cost: \$5.00 per year plus \$3.00 shipping/handling

Send all orders to:

National Cambridge Collectors, Inc.
P.O. Box 416
Cambridge, Ohio 43725-0416

CONVENTION PHOTOS

Do you have some Convention 2002 photos that you would like to share...or would you like to see others photos that were taken during this Grand Opening/100th Year Convention celebration?

If so, please send your jpegs to NCC_CrystalBall@yahoo.com or mail them to the NCC post office box that follows. With your help, we may be able to compile a complete record of events for all to enjoy.

Crystal Ball Photos
c/o National Cambridge Collectors, Inc.
P.O. Box 416
Cambridge, OH 43725-0416

WASHBURN'S SAN ANTONIO SHOW AMERICAN GLASS, CHINA AND POTTERY

Sep 21, 2002 9:00-5:00

Sep 22, 2002 10:00-4:00

Admission Sat \$6.00 Good Both Days Sun \$5.00 (\$2.00 Off With This Card)

**Live Oak Civic Center, 8101 Pat Booker Rd
Live Oak (San Antonio), TX 78233**

Guest Authors: Paul & Debora Torsiello + Tom & Arlene Stillman

Special Guest: Lee Briggeman, Victorian Pattern Glass Expert

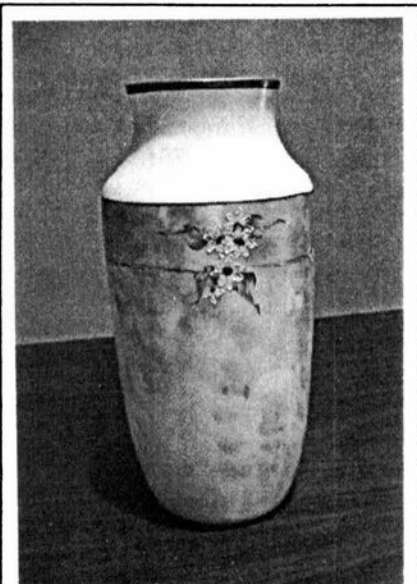
Glass Appraisals: \$5.00 per item to Benefit the National Glass Collection, NDGA

UPCOMING SHOWS FEB 8 & 9, 2003 AND SEP 20 & 21, 2003

For Information:

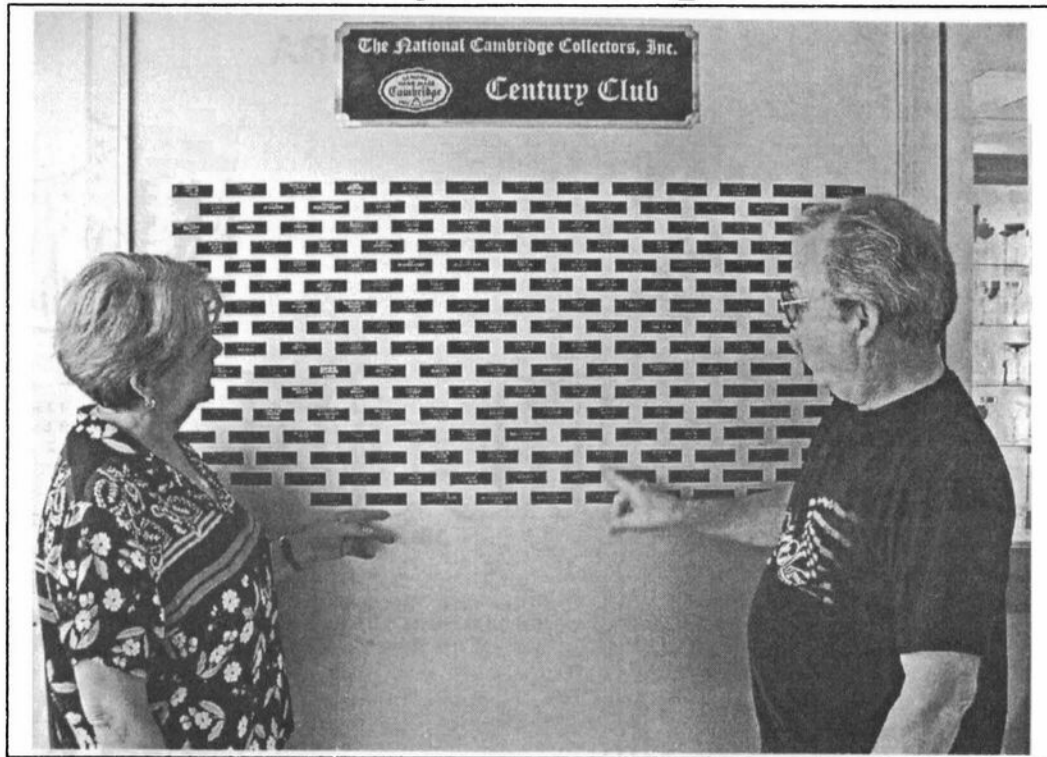
Kent Washburn
210-599-0635/WashburnK@aol.com

5492 Walzem Road # 292
San Antonio, TX 78218-2125



Just one of the many items seen at the Bring and Brag session at Convention 2002 — this piece has enamel decoration on it.

Century Club Update



Bex and George Stamper look at the plaques at the Museum for those who have already joined the Century Club

****TOP TEN REASONS WHY YOU SHOULD JOIN****

10. NCC, Inc. needs to reach the \$50,000 goal set for The Century Club in 2002.
9. If the grant from the National Endowment for the Humanities is received, NCC, Inc. must have a \$50,000 match to accept their \$50,000
8. It would be a shame to turn down a \$50,000 grant if our membership doesn't support our grant efforts
7. Each person contributing \$100 has a nameplate placed in the vestibule of our beautiful museum. Any and all names are accepted - children, memorial, etc
6. We are almost half way to our \$50,000 goal and we still have until December 1, 2002, to reach it
Remember it's tax deductible!!
5. If you can't afford \$100 all at once, send a note with your pledge, however, the entire pledge must be received by December
4. Many \$100 donations compound into a significant increase for the Endowment Fund from which the interest could be used to operate the Museum.
3. It replaces "Sweat Equity" for those members who want to do something to support the museum but live too far away
2. You care about the education, preservation, and perpetuation of our beautiful Cambridge Glass for many years to come
1. To quote Mike Strebler, our newest NCC Board member, "We never want to see Cambridge Glass sold by the pound" because we didn't support the NCC, Inc. in its mission.

I HOPE TO SEE YOUR NAME ON THE CENTURY CLUB WALL OF FAME SOON !!!

Sharon Miller, Chair of Grants and Fundraising



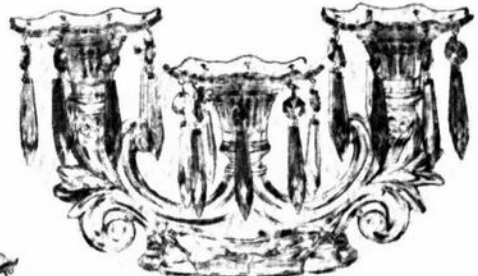
The Cambridge Glass Company



CANDELABRA



No. 1354/27—7 in. 3 lite
(No. 27 bobeches & 18
No. 5 Prisms)



No. 1354/19—7 in. 3 lite
(No. 19 bobeches & 24 No. 1
2½ in. Prisms)



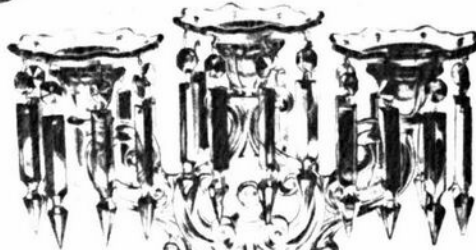
No. 1358—7 in. 3 lite
(No. 19 bobeches & 16 No. 1
2½ in. Prisms)



No. 1354/23—7 in. 3 lite
(No. 23 bobeches & 15 No. 1
2½ in. Prisms)



1458/7½ in. 3 Lite
(3 No. 19 Bobeches & 24 No. 1
2½ in. Prisms)



1443—11 in. 3 Lite
(No. 19 Bobeches & 24 No. 2 Prisms)



1441/1—9½ in. 2 Lite
(No. 20 Bobeches & 20 No. 1
3 in. Prisms)
also 1441/2 furnished
(No. 20 Bobeches & 20
No. 2 Prisms)



No. 1356—7 in. 2 lite
(No. 19 bobeches & 16 No. 1
2½ in. Prisms)



1442—10½ in.
(No. 19 Bobeches & 16 No. 1—3 in. Prisms)

Lyre Candlestick

by Mark Nye

On June 30, 1939 the Cambridge sales force was informed of a revised Lyre candlestick and the following week of a new epergne. These two circular letters read as follows:

June 30, 1939

1442 CANDELABRUM

Circular Letter #147

To All Agents:

We have revised the Lyre Candlestick and a new sample is being sent to you.

This will now be known as #1442 10½ in. Candelabrum (#19 bobeches and 16 #1-3in. prisms).

The list price for this is \$105.00 per dozen.

Yours truly,
The Cambridge Glass Company
W. C. McCartney

July 6 1939

NEW 1478 EPERGNE

Circular Letter #151

To All Agents:

We have made a new Epergne by using the new #1442 Candelabra with two arms and four vases.

This is, of course, not an inexpensive one but we have sold nice quantities of the large 1441 Epergne and we think that this new one is better looking than it.

The number is 1478 and the price is \$150.00 per dozen list.

We will not send sample unless requested, but you can show this by taking the arms and vases from your #1358 and #645 Epergne. Illustration is being made and will be forwarded to you very soon.

Add to Epergne price list as follows:

1478 - 2 lite (2 #1438 Arms and 2 # 19 bobèche with 16 #1-3 in. prisms 4 vases) at \$150.00 per dozen list.

Yours truly,
THE CAMBRIDGE GLASS COMPANY
H.A. Lovelady

The original lyre candlestick appears on catalog pages dating to circa 1936-1937. It came with shell bobeches and No. 2 prisms and in addition to being illustrated on a page of candlesticks and candelabra, was also shown with the Caprice pattern. The only available copies of these pages are from microfiche and are extremely poor, the illustrations, in most instances, being barely visible. (Apparently, the filming was not carefully done and it is also possible the originals were not in good condition.) None of the caption is readable on either page nor are most of the details of the candlestick itself discernible although enough can be made out to determine it is the lyre candlestick. What is visible is the base or foot, which was rectangular in shape and "stepped" on the original candlestick. A third page just showing the candelabrum is in somewhat better condition. Enough detail is visible to determine the original lyre candlestick did not have a finial and the rectangular shaped base is obvious. In addition, the candelabrum makes use of regular bobeches rather than shell shaped ones but still uses No. 2 prisms.

At the time of the revision to the lyre candlestick, this notation appeared in the journal used to record mold orders: "Lyre candlestick - changes as per drawing. Also cast foot." The latter refers to the removal of the rectangular shaped molded foot and the use of a cast foot, circular in shape and made without the use of a mold.

Although not mentioned in the circular letter announcing the revised Lyre candlestick, a catalog type page was produced and distributed to the sales force. The available copy of it comes from the previously mentioned set of microfiche and due to its quality is not reprinted here. The original page was in the style of the 1940 catalog, white on black, and was issued prior to the publication of the 1940 catalog as was the illustration referred to in the circular letter announcing the new 1478 epergne. A copy of this catalog page also survives, again on microfiche, and not reprintable here. Neither of these two pages were incorporated into the 1940 catalog, issued some six months later.

When the catalog dated January 1, 1940, was issued, the 1442 candelabrum appeared in the candelabra section and the 1478 epergne is shown with epergnes and epergnettes. The candlestick itself was not pictured in the original 1940 issue. It wasn't illustrated until a supplemental page captioned "Candlesticks, Candelabra and Hurricane lamps" was issued a year later, June, 1941. Here it is captioned "1474 10½ in. 2-lite Regency Candlestick." All three of these pages accompany this article. [These appear on pages 12, 14, and 15]

By the time the next Cambridge catalog was issued eight years later, the lyre candlestick was no longer in the line.



The Cambridge Glass Company



EPERGNES and EPERGNETTES (PATENT 19778 16) (PATENT 105954)



639 Epergne



1441/8 Epergne



645 Epergne



1478 Epergne



654 Epergne



1357 Epergne



Caprice 75 Epergne



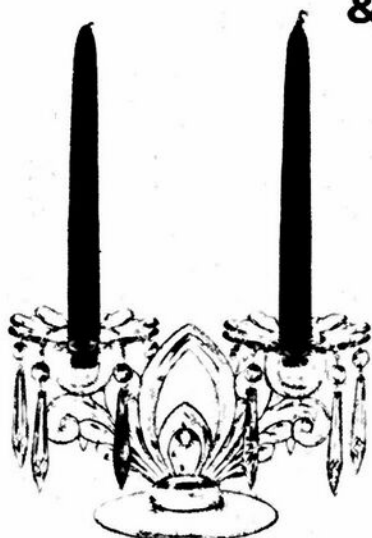
Caprice 76 Epergne



The Cambridge Glass Company



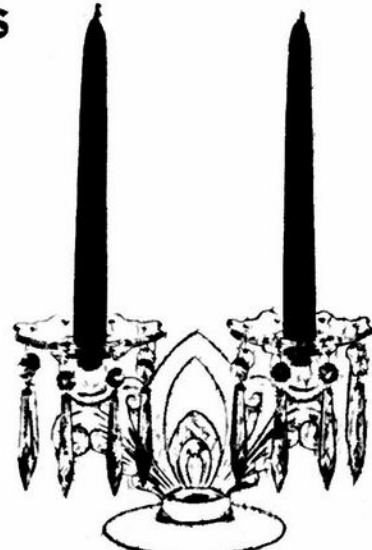
CANDLESTICKS CANDELABRA & HURRICANE LAMPS



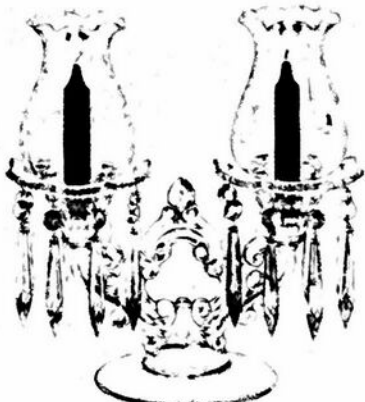
Caprice 79—6 in.
2-Lite Candelabrum
No 23 Bobeches—
10 No. 1 3 in. Prisms)



Caprice 73
Reflector Candleholder



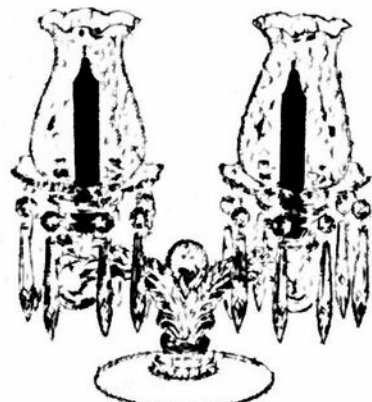
Caprice 78—6 in.
2-Lite Candelabrum
No 19 Bobeches
16 No. 1 3 in. Prisms



1608—Hurricane Lamp
No 19 Bobeches
No 1 Prisms)



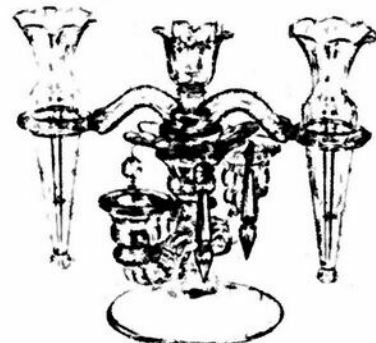
Caprice 72—6 in
2-Lite Candlestick



1609—Hurricane Lamp
No 19 Bobeches
No. 1 Prisms)



1474 10 1/2 in
2 Lite Regency Candlestick



666—Epergne
No 21 Bobeches
4 No 13 Prisms

NATIONAL STUDY GROUP REPORTS



Some Study Groups already exist. Listed below is contact information if you are interested in a group in your area. If there is no group in your area and you are interested in starting or being a member of a study group, please contact the *Crystal Ball*. It is very easy to get your group going once you find other interested members.

Study Group #13—The Miami Valley (Ohio) Study Club

Contact: Larry Everett
db0098@dragonbbs.com
937 675-6491

Study Group #14—The Cambridge Cordials

Contact: Lorraine Weinman
blweinman@hotmail.com
330 966-9376

Study Group #15—North Texas Cambridge Study Group

Contact: Scott Pierce
scottpierce1@msn.com
817 427-9510

Study Group #16—Elegant Glass Collectors

Contact: Bill Duff
billnvon@aol.com

Study Group #17—The Cambridge Wildflowers

Contact: Barbara Wyrick
bwyr@ee.net
614 291-0361

Study Group #18—Virginia Study Group

Contact: Alex Citron
apcpenguin@aol.com
434 296-2531

Study Group # 15 North Texas Cambridge Study Group

April 28, 2002

Burt and Donna Kennedy provided the house and snacks for the meeting. We started with some business items. It was mentioned that the Caprice pressed footed tumbler would be available later this summer from NCC as a fundraising item. There is an upcoming NCC election, with a Texas person on the ballot. We discussed "How can this study group help in the museum grand opening." We took up a collection that will be forwarded as our contribution to the grand opening expenses. Thanks to everyone for helping.

Our topic for this meeting was "Blue" and everyone brought a variety of blue glass to compare and critique. We had a large assortment of pieces to discuss. We used the Colors book as the guide when we examined the various pieces. We had examples of most of the blues although we could only distinguish some items by item and date. We had: Azurite bowl, Bluebell Georgian tumbler, Willow Blue plate, Mystic candlestick, Tahoe Blue tall joe, Moonlight Blue Caprice items,

Cobalt Blue II platter, Royal Blue swirl glass, frosted Royal Blue 1402/100 goblet. Everyone's contribution made for an impressive table of blue.

Show and Tell had several interesting items including a Cascade 3 footed low bowl, sea shell cream and sugar set, Blue goblet with Crystal stem and Blue foot, Heatherbloom Georgian tumbler, 2 Everglade plates with variation (maybe Arcadia), Blue swan (not Cambridge color), 10" unknown vase with nice dragon etching.

We concluded with plans for next meeting. We had such a great time discussing the "Blue" glass that we decided to repeat this process and look at "Amethyst" glass at the next meeting. Everyone enjoyed the "potato bar" while discussing the show and tell items.

—submitted by Freeman Moore



Study Group #18 Virginia-Maryland-DC Study Group

April 6, 2002

The Virginia-Maryland-DC Study Group held its first meeting on Saturday, April 6, 2002, at the George Mason Public Library in Annandale, Virginia. Eighteen members were in attendance, plus two guests. Alex Citron chaired the first business meeting, at which officers were elected. Alex Citron will serve as president, Marcia Feldman is the treasurer, Mary Kuhlman is the secretary, and Barbara Burke is the program chair.

Dues were established at \$5 per year, to be paid annually at the first meeting of the year. There was discussion about selecting a name for the study group, but no decision was reached. An annual meeting schedule was established. Meetings will be held on the first Saturday of February, April, June, and October. In addition a holiday social meeting will be held at a member's home each December.

The Study Group will set up an NCC display and book sales table at the Old Dominion Depression Glass Show held each November in Annandale, Virginia.

At the conclusion of the business meeting, guests Ken and Jane Filippini presented a program on Rosepoint.

June 1, 2002

The Virginia-Maryland-DC Study Group met at the Richard Byrd Public Library in Springfield, Virginia. Ten members were present, including two new members of the study group, David and Lisa Helm. The group's membership now stands at 22 dues-paying members. In the absence of the secretary, president Alex Citron agreed to take notes and submit a report to the *Crystal Ball*.

NATIONAL STUDY GROUP REPORTS

The study group agreed to provide volunteers to work at the book table at the NCC Convention. There was discussion about a fundraising project. It was decided to pursue this after the group gets a bit better established.

Study group president Alex Citron announced that we will be reserving seats together at the banquet at the NCC Convention. It was decided not to hold any additional study group functions at the 2002 Convention.

Shelley Citron noted that the meeting was conflicting with the Glashoppers Show in Winchester, Virginia; that at least three of our members were absent today because of that show. It was decided that future June meetings will be held on the second Saturday of the month to avoid this conflict.

A permanent name for the study group was proposed and will be voted on at our next meeting in October.

At the conclusion of the business meeting, a show-and-tell of Cambridge etches was held. About 15 beautiful examples were displayed. The program for the October meeting was announced. Shelley and Alex Citron will display and discuss Cambridge Nudes (3011 line).

—respectfully submitted by Alex Citron



Membership Benefit

Another great benefit to your membership is access to a private "members only" website.

Copies of research articles from the back issues of the *Crystal Ball* are now available there. The old back issues were lost in the flood of 1998, but now the research materials contained in them are coming back to be shared with the entire membership.

To access the site, follow this URL:

<http://www.cambridgeglass.org/NCCMembers>

You will be prompted for an ID and password. These are case sensitive. They will also change periodically, so keep reading your current issues of the *Crystal Ball*. Please do not share the passwords with non-members! The private site is intended to benefit you, and that benefit will be diluted if the ID and password is shared indiscriminately.

ID: NCC

Pswd: TriangleC



Now even more is available in the Museum gift shop... check out the Jadite candlesticks and several styles of mouse pads

Jadite Caprice Tumblers and More!

NCC has just made these gorgeous 12 oz. Jadite Caprice tumblers.

You can get yours now for \$20 each or 6 for \$100 (buy 5 and get one FREE)

They are available at the new Museum or can be ordered from NCC, P.O. Box 146, Cambridge, OH 43725-0416

Shipping is \$10 for 6 tumblers

And now also there is a single lite tall candlestick in Jadite that sells for \$25 each

Shipping is \$10 a pair

~ GLASS ~ MARKETPLACE

Time to Advertise Here!

**Check our reasonable rates
on page 2**

UPCOMING EVENTS

- Aug. 10-11 Great Northeast Depression Era Glass and Pottery
White Plains, New York
Information: (860) 872-3294 or (330) 448-8986
beanibec@hardtimesglassware.com
- Aug. 10 Chalmette Depression Glass Show & Sale
Chalmette, Louisiana
Information: (504) 368-1636 or (504) 392-5093
- Aug. 31-Sept. 1 Metroplex Glass Show and Sale
Grapevine, Texas
Information: (866) 638-9386
info@metroplex-glass-show.com
- Sept. 21-22 Washburn's San Antonio Show
Live Oak (San Antonio), Texas
Information: (210) 599-0635
WashburnK@aol.com
- Oct. 12-13 Elegant and Depression Glass Show and Sale
Waxahachie, Texas
Information: (817) 545-5856 or (972) 396-8832
- Oct. 26-27 Upper Midwest Depression Era Glass/Pottery Show
Bloomington, Minnesota
Information: (651) 770-1567
- Nov. 22-24 Eastern National Antiques Show & Sale
Harrisburg, Pennsylvania
Information: (610) 437-5534
JCMAENA@aol.com

Know of any interesting events or shows coming up?
Please let us know, and as space allows, we will print information
about these events.

WE CLEAN CLOUDY GLASS! SATISFACTION GUARANTEED

Yes, *it is true* that we really can restore the interior of your cruet, vase, decanter and other internally etched items back to near original condition.

We do not oil, wax or cover up the sickness in any way! We actually remove it.

No items are too sick to clean! If we cannot clean an item to meet your satisfaction, the cleaning is FREE!

Send no money up front When we return your item a bill will be enclosed for the postage and cleaning. If you are not satisfied, only the return postage is requested.

Most items clean in 7-8 weeks. All glass is handled and cleaned at your risk. Some very cloudy items may take several additional weeks.

| | | | |
|-----------------|--------------|-------------------|--------------|
| Cocktail Shaker | \$35-\$40.00 | Salt Shaker (1) | \$25.00 |
| Cologne | \$30.00 | Salt Shaker (2) | \$45.00 |
| Cruet | \$30.00 | Vases (under 10") | \$30-\$35.00 |
| Decanter | \$35-\$45.00 | Vinegar & Oil | \$30.00 |
| Lavender Jar | \$25-\$35.00 | Water Bottle | \$35-\$40.00 |

Ship to: Kim Carlisle & Associates
28220 Lamong Road, Dept. C
Sheridan, IN 46069
(317) 758-5767

kcarlisl@indy.net

2001



Stems Without Thorns

As the world's largest supplier of old & new china, crystal, silver and collectibles, Replacements, Ltd. has more than 700 different patterns of Cambridge crystal.

And however much we enjoy selling pieces that were once thought irreplaceable, we love buying them as well. Thanks to people like you, our crystal inventory currently numbers in the hundreds of thousands, and the numbers keep growing every year.

So, if you've been unsuccessfully searching for that elusive piece of Cambridge — or any other type of fine crystal — call us for a free list of pieces available in your pattern. And, if you're looking to sell pieces you currently have, we can help you there, too.

REPLACEMENTS, LTD.
China, Crystal & Silver • Old & New

1-800-REPLACE
(1-800-737-5223)

1089 Knox Road,
PO Box 26029, Dept. CB,
Greensboro, NC 27420
www.replacements.com

DEALERS



DIRECTORY

NOTE: When writing to the dealers listed here, please enclose a SASE!

| | | |
|---|--|---|
| <p>DAUGHERTY'S ANTIQUES Jerry and Shirley Antiques and Collectibles * Mostly Glass www.daughertys-antiques.com Shows & Mail Orders 2515 Cheshire No 402-423-7426 Evenings Lincoln NE 68512</p> | <p>CRYSTALLINE COLORS Buy, Sell, and Appreciate Cambridge and Other Elegant Glass <i>I Love Cambridge</i> Lynne R. Franks 216-661-7382 Ohio & Western PA Antique Malls</p> | <p>THE JONES GROUP Cindy Jones Buy and Sell Cambridge Glass 650 Riverside Drive Sleepy Hollow, NY 10591 914-631-1656 or E-Mail Caprice0@aol.com</p> |
| <p>Milbra's Crystal Replacement and Matching Buy & Sell Specializing in Cambridge Fostoria Heisey and others Milbra Long (817) 645-6066 Ernly Seate (817) 294-9837 PO Box 784 Cleburne, TX 76033 E-mail: longseat@flash.net</p> | <p>Deborah Maggard, Antiques Specializing in Cambridge Glass, American Hand Made Glass & Victorian Art Glass Please stop and see our extensive collection of Cambridge Glass at Riverfront Antique Mall in New Philadelphia, Ohio (Exit 81 off I-77) Booths 805 and 812 You won't be disappointed! We buy one piece or entire collections, please contact me at 440-247-5632 & leave a message or email at debmaggard@worldnet.att.net PO Box 211 Chagrin Falls, Ohio 44022</p> | <p> Mary Jane's Antiques Early American Pattern Glass Depression Era Items 2653 Burgener Drive (817) 422-5453 Denton, TX 76201 mjantiques@aol.com</p> |
| <p>THE GLASS URN 456 West Main Street, Suite G Mesa, AZ 85201 480-833-2702 480-838-5936 Mail Order Shows Open Shop CAMBRIDGE, FOSTORIA, HEISEY, ETC</p> | <p>THE DEGENHART PAPERWEIGHT AND GLASS MUSEUM, INC. P.O. Box 186 Cambridge, Ohio 43725-0186 Intersection of US 22 & I 77 Phone 740-432-2626</p> | <p>GATEWAY ANTIQUE MALL, INC. JUST NW OF MINNEAPOLIS-ST. PAUL, MN Next to Super 8 in Rogers, MN (I-94/I01 Intersection) 85 Dealers 7 Days 10-6 612-428-8286 ELAINE STORCK, OWNER/DIRECTOR</p> |
| <p>THE DEGENHART PAPERWEIGHT AND GLASS MUSEUM, INC. P.O. Box 186 Cambridge, Ohio 43725-0186 Intersection of US 22 & I 77 Phone 740-432-2626</p> | <p> Mother Drucker's Penny Drucker Specializing in Elegant Glassware Shows and Mail Order P.O. Box 50261 Phone: 949-551-5529 Irvine, CA 92619 888-MDRUCKER Website: http://motherdruckers.com</p> | <p>YOU CAN ADVERTISE YOUR ANTIQUe SHOP HERE!</p> |
| <p>THE GLASS CUPBOARD P.O. Box 652 West End, North Carolina 27376 Marcia Ellis Cambridge Show 910-673-2884 and Mail Order</p> | <p>JUDY'S ANTIQUES Judy Bennett 422 S. Ninth Street (Corner of Jefferson) Cambridge, Ohio 43725 Bus 740-432-5855 Res 740-432-3045 CAMBRIDGE GLASS MY SPECIALTY</p> | <p>YOU CAN ADVERTISE YOUR ANTIQUe SHOP HERE!</p> |
| <p>FINDER'S ANTIQUE HOUSE 3769 Highway 29 North Danville, VA 24540 (434) 836-6782 Cambridge-Heisey-Duncan-Fostoria Open Wed-Sat 11:00 to 5:00 (Seasonal Hours Apply)</p> | <p>GREEN ACRES FARM 2678 Hazelton Etna Rd. Pataskala, OH 43062 (State Route 310 North) Sat & Sun 1-7 PM 740-927-1882 Antiques, Crystal Glass and Collectibles</p> | <p>CRYSTAL LADY Thurs. - Sat. 11-5 1817 Vinton St. Omaha, NE 68108 Bill, Joann, and Marcie Hagerty Shop 402-341-0643 Home 402-391-6750 Specializing in Elegant Glass & Collectibles www.crystalladyantiques.com</p> |
| <p>YOU CAN ADVERTISE YOUR ANTIQUe SHOP HERE!</p> | <p>The National Museum of Cambridge Glass 136 South Ninth Street Cambridge, Ohio (740) 432-4245 Open April through October Wednesday-Saturday 9 a.m. to 4 p.m. Sunday noon to 4 p.m. Closed Easter and July 4 Admission \$2 (members and children under 12 free)</p> | <p>PENNY COURT MALL 637 Wheeling Avenue Cambridge, Ohio 100 Booths 15,000 sq. ft. HOURS Daily 10-6 Sunday Noon-5 Closed Easter, Thanksgiving, Christmas Call for Other Holiday Hours 740-432-4369</p> |
| <p>Mon-Fri 10-5:30 Sundays 12-5:30 Bogart's Antiques BUY—SELL—APPRAISE—REFINISH CANE & REED CHAIRS—CLOCK REPAIR Jack & Sharon Bogart St. Rte 40 740-872-3514 Shop 7527 East Pike 740-826-7439 Home Norwich, Ohio 43767</p> | <p>MARGARET LANE ANTIQUES 2 E. Main St., New Concord, OH 43762 Lynn Welker 740-826-7414 Cambridge Glass Matching Service Hours Mon-Fri 10-12 AM, 1-5 PM or by Appointment</p> | <p>YOU CAN ADVERTISE YOUR ANTIQUe SHOP HERE!</p> |
| <p>ISAACS ANTIQUES (740) 826-4015 See our booths in Penny Court Mall in Cambridge and White Pillars Antique Mall at Rt. 40, one mile west of I-70 Norwich Exit #164</p> | <p>ALADDIN LAMP BOOKS Free List Figurine Lamps Wanted Bill & Treva Courter 3935 Kelley Rd Kevill, KY 42053 Phone 270-488-2116 FAX 270-488-2055</p> | <p>DEXTER CITY ANTIQUE MALL P.O. Box 70, Dexter City, Ohio 45727 (740) 783-5921 Located on Ohio St. Rt. 821 Between Exits 16 & 25 off I-77 Just 30 min. South of Cambridge, Ohio</p> |

**August Quarterly Meeting
August 24
at Theo's Restaurant
(formerly the Coney Island)
and the new NCC Museum
136 South Ninth Street
Cambridge, Ohio**

NOON at Theo's
and then return to the Museum
for work and a brainstorming
meeting on the research area
in the Museum

MAKE PLANS TO COME JOIN US!

ALSO...

**MAKE PLANS TO COME
TO CAMBRIDGE
FOR THE NOVEMBER
QUARTERLY MEETING
AND
EDUCATION PROGRAM
NOVEMBER 2**

*More details to follow
next month*

Auction Lists Only

(No Glass)

for the 2003 NCC Benefit Auction
will be accepted

SEPT. 1 - OCT. 1

National Cambridge Collectors Inc
PO Box 416
Cambridge OH 43725-0416

<http://www.cambridgeglass.org>
e-mail: NCC_CrystalBall@yahoo.com

FIRST CLASS MAIL
U.S. POSTAGE
PAID
PERMIT NO. 3
CUMBERLAND, OH 43732

FIRST CLASS MAIL

Membership Renewal Notice

**If the date on your address label is 8-2002,
this is your LAST ISSUE of the Crystal Ball.**
Please take a moment and renew now. Thank you!
