



Cambridge Crystal Ball

Published monthly by National Cambridge Collectors, Inc.
to encourage and report the discovery of the elegant and boundless product of the
Cambridge Glass Company of Cambridge, Ohio

Issue No. 378

October 2004

See Crystal Ball photos on-line, in full color at www.crystalballphotos.org (password on page 5)

Up On the Roof



Before

AFTER

(see page 5)



Inside... Trademarks & Logos, part III • Minutes of the Annual Meeting

National Cambridge Collectors, Inc.

PO Box 416
Cambridge, OH 43725-0416

Please notify us immediately of any address change.

Contacts:

President Ken Filippini	(201) 670-0990
Secretary Larry Everett	(937) 675-6491
Crystal Ball Editor Alex Citron	(434) 296-2531
NCC Museum (phone)	(740) 432-4245
(fax)	(740) 439-9223

Membership

Membership is available for individuals at \$20.00 per year, and an additional \$3.00 for associate members (12 years of age and older, residing in the same household). All members have voting rights, but only one issue of The Crystal Ball will be mailed to each member household.

Multi-year memberships are available:
2 years for \$38.00; 3 years for \$56.00.

2004-2005

OFFICERS AND COMMITTEE CHAIRS

President	Ken Filippini
Vice-President	Sharon Miller
Secretary	Larry Everett
Treasurer	Dennis Snyder
Sergeant-at-Arms	Rick Jones
Acquisitions	Lynn Welker
Archives	Mark A. Nye
Budget & Finance	Mike Strebler
By-Laws	Alex Citron
Crystal Ball	Alex Citron
Endowment	Rick Jones
Facilities	Carl Beynon
	Joe Miller
Grants & Fundraising	Sharon Miller
Long-Range Planning	Doug Ingraham
Member Services	George Stamper
Membership	Linda Adkins
Membership Development	Freeman Moore
Museum	Cindy Arent
Nominating	Rick Jones
Program	David Ray
Projects	Bill Hagerty
Publications	Mark A. Nye
Publicity	Lorraine Weinman
Study Group Advisor	Judy Rhoads
Technology	Dennis Snyder
Webmaster	Linda Roberts
Auction	Dorothy Rieker
	Squeek Rieker
	Lynn Welker
Convention	Shelley Cole
Glass Show & Sale	Mary Beth Hackett
	Joy McFadden
Glass Dash	Larry Everett
	Susan Everett

Board of Directors:

Cindy Arent; Shelley Cole; Larry Everett;
Ken Filippini; Rick Jones; Sharon Miller; Mark Nye;
Dennis Snyder; Mike Strebler; Lorraine Weinman;
Lynn Welker; Frank Wollenhaupt

Cambridge Crystal Ball

The official publication of National Cambridge Collectors, Inc., a non-profit corporation with tax-exempt status. Published monthly for the benefit of its members. All rights reserved; reproduction in whole or part without written permission of National Cambridge Collectors, Inc., and the author is prohibited.

Executive Editor

Alex P. Citron

Research Editor

Les Hansen

Advertising Manager

Jeannie Moore

Circulation

Sharon & Joe Miller

Advertising Rates

Display Advertising (camera-ready):

Full Page	\$50.00
3/4 Page	\$40.00
1/2 Page	\$30.00
1/4 Page	\$20.00
1/8 Page	\$15.00

(Add \$5.00 for each photograph)

Classified Advertising:

10 cents per word; \$2.00 minimum
(Abbreviations and initials count as words)

Dealer Directory:

\$24.00 for twelve-month contract
Text limited by standard box size (see page 19)
Includes FREE listing on NCC website

- Payment in full must be received before advertising will be run.
- Cambridge Crystal Ball and National Cambridge Collectors, Inc., assumes no responsibility for items advertised and will not be responsible for errors in price, description or other information.
- Advertising copy may be submitted to us by e-mail or regular mail as follows:

Ad copy may be sent by e-mail to NCCcrystalball@aol.com, and must be sent by the 10th of the month preceding publication. Ad will not be run until your check has been received at our PO Box.

Ad copy may be sent by regular mail, along with your check, to our PO Box. Copy sent this way must arrive at our PO Box by the 1st of the month preceding publication.

Submissions to The Crystal Ball

By mail: P.O. Box 416 Cambridge, OH 43725

E-mail: NCCcrystalball@aol.com

(This E-mail address is for newsletter business, inquiries and submissions only)

Deadlines:

Ad copy by e-mail: 10th of preceding month
Ad copy by regular mail: 1st of preceding month
Articles, study group reports, etc: 10th of preceding month

MEMBERS ONLY

Visit the "Members Only" section of the NCC's website at cambridgeglass.org/NCCmembers

Features available only to NCC Members include:

Reprints of Research Articles

Minutes of Board Meetings

User name: NCC

Password: TriangleC



President's Message:

In Memory of...

Now that the summer is coming to an end, and with fall almost upon us, it is easy to become melancholy. With the passing of another glorious summer, we could allow ourselves to dwell on what we are losing, instead of remembering the enjoyment we experienced. As the season changes, it is far better to look back fondly and ahead with anticipation... as it should be with so much of our lives. So with that idea in mind, I am writing "In Memory of" for one of my dearest friends who passed away recently.

This is not meant to be in any way depressing; rather an acknowledgement of a life well-lived by one of the most inspiring women I have known. Diana Rizzo was an NCC member, an Elegant Glass Study Group member and, two years ago, became a first-time NCC Convention attendee... and so much more.

In last month's President's Message, I described the process; the journey that led me to where I am today. I recognized many who enabled me to reach my present position. Again I thank them, but without having met Diana, I am not sure I would understand how important it is to really share, to help others, to aspire to a real fellowship. These ideas seem to me to be a prerequisite of being a member of NCC, and what makes the experience that much more rewarding. Over the last couple of

years, this spirit of sharing has enabled NCC to grow stronger, and achieve some monumental things. The NCC Museum could never have been built without the generous sharing of the membership. It could not have come to exist without their willingness to help each other (which is what fellowship is all about).

For years I said I would never let a piece of glass become more important than a friendship; that there was more than enough glass to go around. I thought I meant it, but until I met Diana and watched how she lived her life, I was not aware of what being truly genuine was really all about. Diana lived each day to its fullest, without a trace of insincerity. She would let you know where you stood, would make her position known, and stay true to her goals.

I believe the NCC is one of the strongest antique glass organizations because its leadership has gone about its business with this same understanding. Several years ago NCC announced its mission to develop a new museum, to continue on the path of education and to establish cooperative relationships with other glass organizations. Due to a genuine spirit of leadership, and thanks to its supportive and active membership, the NCC Museum is an ever-developing gem. Thanks to numerous publications, like Mark Nye's recent Rock Crystal book, the development of our web site, and

the creation of a research library, the education mission is a success story.

Thanks to a series of programs, displays and the exchange of information with other antique glass organizations, like NDGA, NCC is forging lasting ties. As long as NCC continues to do its business with sincerity and stays true to its goals, a healthy future is assured.

So as we march into the future, forging new goals such as increased membership, new publications, larger and more ambitious educational endeavors, we will surely face expanding challenges. We must keep in mind that what we do is important, but how we do it is what our true legacy will reflect. If we stay true to Diana's memory we will surely be remembered fondly, as I remember her.

**Live each day to the fullest
And when you're called to rest
You will leave a legacy too
Of how to pass life's little test.**

A tribute to celebrate the life of
Diana Rizzo 1941-2004.

Ken Filippini

Research & History:

Trademarks & Logos: Part III

1955-1958 and Post-1958

by Mark A. Nye

The reorganized Cambridge Glass Company began manufacturing operations in late March 1955. They continued to use the old company's 1942 trademark but the labels were now printed using foil rather than paper.



At the time the factory reopened, a commemorative label was designed and used for a very short time, perhaps only for a single day. The label was large, square and measuring 36 mm by 45 mm. It consisted of the trademark label, underneath which are the words "COMMEMORATING THE REOPENING OF THE CAMBRIDGE GLASS CO. 28TH MARCH 1955" all printed in black ink on yellow foil paper. An actual label was not available to this writer. Using a rather poor illustration, the label has been recreated in the general style of the original.



The reorganized Cambridge Glass Company ceased manufacturing glass late in 1958. Sales of existing stock continued through much of 1959. Imperial Glass Company, of Bellaire, Ohio, acquired, in 1960, the Cambridge molds, etchings plates and other assets excluding the actual factory and property on which it stood. Following this acquisition, Imperial produced several of the Cambridge lines and labeled them "Cambridge by Imperial" They created a label very similar to that used by Cambridge and added the words "By Imperial."



This label was used only on those lines and items made exactly as Cambridge had, an obvious attempt to take advantage of the Cambridge name and the popularity of such lines as Rose Point and Caprice. The "Cambridge by Imperial" label was not used on subsequent production using Cambridge molds but in colors not used by Cambridge.

Beginning in the late 1960s and continuing into the 1970s, another company calling itself "The Cambridge Glass Company" utilized the old factory buildings but never made glass there. This company, whose parent was Super Glass of New York City, had absolutely no relationship to the original Cambridge Glass Company or to the reorganized company of the late 1950s.

Research & History:

Among the items marketed by this new company were lamp shades and vases. Several different labels were used on vases, all of which are round and contain the wording "Cambridge Glass Hand Blown U.S.A." Additional wording will vary. One such label is reproduced here. The original has a gray background with white lettering. Other styles exist. With the coming of Internet auctions, pieces bearing these labels, which previously had been seldom seen, began to appear with some frequency. While the knowledgeable and experienced Cambridge collector should easily recognize the piece for what it is, the novice collector may think it is a piece manufactured by the original company and/or its successor. Other than the art glass label (discussed in Part I), Cambridge never used the word "glass" on any of its labels nor the words "hand blown."



In 1973, when National Cambridge Collectors, Inc. was founded, the organization created a logo based on ones used by the Cambridge Glass Company. This logo was never used by the company. Note that it has dates on it, something no original company logo ever had. The dates, of course, represent the years the original company was in existence.



Museum Roof Project Completed

The new roof on the National Museum of Cambridge Glass is done! It was supposed to take a week (or so), and it dragged on for more than eight weeks.

Don't get the wrong idea - it was the weather, not human failings - that turned this seven-day project into a marathon.

Carl Beynon, Facilities Chairman, spent day after day after day hoping for dry weather and progress. Apparently, the roofers cannot start work if there's even a 30% chance of rain that day. A sudden downpour on an opened section of roof could be disasterous... so they were careful.... AND IT JUST KEPT RAINING.

Nonetheless, the roof is now done and our museum is once again protected from the elements.

The project, anticipated since the building was purchased, cost over \$30,000. The club was able to pay for it without borrowing or using any operating funds. Just one more example of the generosity and passionate commitment of our members.

Century Club Update

With the conclusion of the roof replacement, The Century Club will be allocating donations a bit differently now. Fifty percent will be going to the endowment fund, and fifty percent will be dedicated

to paying down the club's mortgage.

The NCC was enormously successful in raising the funds to pay for the roof replacement. During the past year, two-thirds of Century Club donations were being earmarked for the roof. A final push, including a very generous donation from Fleur de Lis Healy, got the roof paid for without touching a penny of operating funds.

If you haven't yet joined the Century Club for 2004, there's still time - and there's still a need for your support. Donations of \$100 (or any other amount) may be sent to the NCC address at any time; a donation form will appear in the November issue of The Crystal Ball.

**See the Crystal Ball
photos in color, on-line
at...**

www.crystalballphotos.org
password: goblins

The Museum:

Shepard Family Visits Museum

by Cindy Arent

On the tenth of August, we welcomed some very special guests to The National Museum of Cambridge Glass. Mr. & Mrs. Arthur E. Shepard, and Mr. Shepard's sister, Peg Stranathan, came to Cambridge to see the new Edna McManus Shepard Education Center. Mr. Shepard's grandfather, Hugh McManus, made the very first piece of Cambridge Glass back in 1902. He was assisted by his son, Walter McManus.

The generous room-naming gift from the Shepards enabled the NCC to begin construction of the new education center. Additional funding was provided by matching member donations.

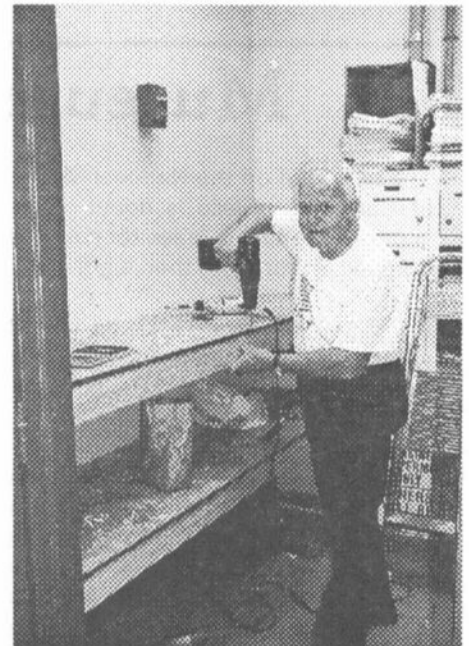
The room was named in honor of Mr. Shepard's mother, Edna McManus Shepard and the McManus family.



Above: NCC Members Bob and Pat Clampitt of Moore, OK, visited in July. Betty Sivard showed them around.

At Left: Cindy Arent welcomes Dottie Shepard, Art Shepard and Peg Stranathan to the museum's Education Center in August.

Below: Carl Beynon kept busy building some more storage shelves in the mail room.



National Museum of Cambridge Glass

Hours: Wednesday - Saturday 9:00 to 4:00

Sunday Noon to 4:00

CLOSING FOR THE SEASON AT THE END OF OCTOBER



More Museum News
on Page 20

Study Groups:

The NCC has several study groups; these are the groups currently active and holding regular meetings. Listed below is contact information for these study groups.

If there is no study group in your area and you are interested in starting or joining a new study group, please contact NCC Study Group Advisor Judy Rhoads at kjrhoads@aol.com.

#13- Miami Valley Study Group

Miami Valley area, Ohio
Larry Everett
db0098@dragonbbs.com
(937) 675-6491

#14- The Cambridge Cordials

Cambridge, Ohio
Lorraine Weinman
blweinman@hotmail.com
(330) 966-9376

#15- North Texas Cambridge Study Group

Dallas area, Texas
Scott Pierce
scottpierce1@msn.com
(817) 427-9510

#16- Elegant Glass Collectors

PA & NJ
Bill Dufft
billnvon@aol.com

#17- The Columbus Wildflowers

Columbus, Ohio
Barbara Wyrick
bwyr@ee.net
(614) 291-0361

#18- The Cambridge Triangles

VA, MD, DC
Alex Citron
NCCcrystalball@aol.com
(434) 296-2531

#19- NE Ohio Cambridge Collectors

Akron-Canton area, OH
currently no contact

#20- South Florida Study Group

Miami, FL
Linda Gilbert
rosepointbabe@aol.com



Members of the Elegant Glass Collectors at the home of Ken & Jane Filippini

Reach Out to Start or Expand a Study Group

by Judy Rhoads, Study Group Advisor

If you're interested in starting a Study Group, the first step would have to be contacting other Cambridge collectors in your area. We have good news; Linda Adkins, Membership Chairperson of the NCC, now has the computer capability to create lists of NCC members by region, state or city - for any geographic area at all.

In order to contact other members in your area, either to build a new Study Group, expand one you already have, or just let members know what your group is doing; you are encouraged to contact Linda at lin26@hocking.net.

Here's the process: First, define the geographic area you want to cover. This can be a whole state, part of a state, even several states (if they're not too big and spread out). Send Linda a draft of the letter you'd like to send to your new contacts. She will then compile a mailing list and forward your

letter on NCC letterhead - on your behalf - to the potential new members of your Study Group.

The Cambridge Triangles, with members in Virginia and Maryland, was formed just this way three years ago, and is now an active and lively NCC Study Group.

As most of you know, NCC follows a strict policy of not sharing the names and addresses on the membership list. The club has always placed a very high priority on the privacy and security of its members. That's why you will need to follow this procedure for contacting members.

Once people respond to your letters, of course, you may exchange e-mails and phone numbers freely as you create an exciting new Study Group.

Good luck!!!

Events:

If you know about any upcoming glass shows or other glass events, please pass the word on to us at least six to eight weeks before the show dates. Listings are free of charge.

Mark Your Calendar



> **Quarterly Meeting**
Saturday, November 6
Dinner &
Educational Program

> **Annual NCC**
Fund-Raising Auction
Saturday, March 5, 2005

Show Cancelled

The **Old Dominion Glass Show**, usually held on the first weekend of November in Annandale, VA, has been cancelled for this year. There was an unforeseen schedule conflict at the venue.

The show is expected to return in November 2005.

Upcoming Glass Shows, Etc.

October 16-17:

The "Age of Elegance" Show
Waxahachie, TX
Call: (817) 545-5856

October 23-24:

Upper Midwest DG Show
Bloomington, MN
Call: (651) 770-1567
E-mail: firesidant@aol.com

October 30-31:

Connecticut Cambridge Collectors
Southington, CT
Call: (860) 569-3595
E-mail: lthompson@erl.com

November 5-6:

North Jersey DG Show
Allendale, NJ
Call: (973) 267-7511

November 6-7:

Michigan DG Society Show
Dearborn, MI
www.mdgs.freepagez.com

November 13-14:

Tulsa DG Show & Sale
Tulsa, OK
Call: (918) 747-4164

November 26-27:

Lehigh Valley Glass/Pottery Show
Allentown, PA
Call: ((610) 767-1405
E-mail: Kemmdg@hotmail.com

January 28-29, 2005:

Sanlando DG Show
Sanford Civic Center
Sanford, FL
Call: (407) 298-3355

February 5 & 6, 2005:

South Florida DG Show
Ft. Lauderdale, FL
Call: (305) 884-0335
E-mail:
fboches@cheshirecatantiques.com

the 28th annual

DEPRESSION GLASS SHOW & SALE

featuring Depression Era Glass, Glass from other Periods & American Pottery

Southington High School

720 Pleasant St. Southington, CT

Sat. 10 A.M. - 5 P.M. Oct. 30-31, 2004 Sun. 11 A.M. - 4 P.M.

To benefit The National Cambridge Museum

Admission \$4.50 One or more with coupon- \$4.00 Each
admission includes a chance on a prize

Information call 860.569.3595 or e-mail lthompson@erl.com

I-84 Westbound, exit 32, right at ramp onto Rte. 10

Left at 5th light onto Flanders St.

School will be 1/2 mi. on right.

I-84 Eastbound, exit 32, left at ramp onto rte. 10.

Left at 4th light onto Flanders St.

School will be 1/2 mi. on right.

Minutes of the Annual Meeting:

President Rick Jones called the Annual Membership Meeting of the National Cambridge Collectors Inc. to order at 8:15 p.m. on June 25, 2004 at Prichard-Laughlin Civic Center.

Bill Duft reported on the silent auction results: A total of 34 donations were received and the total amount received was \$2,958.

Tarzan Deel reported the Board election results: The seats of Cindy Arent, Tarzan Deel and George Stamper were up for election. The Election Committee met June 24th at 1:00 p.m. for the purpose of counting votes. There were 286 votes received and one vote was rejected. Candidates elected to the Board were Cindy Arent, Shelley Cole and Mark Nye. Having met the by-law provisions, Frank Wollenhaupt was declared First Alternate and should a Board vacancy occur before the next election, Frank will assume that seat.

Treasurer Dennis Snyder reported on the organizations financial activities through March 31, 2004.

Acc't balances were:	Jan 1, 2003	Dec 31, 2003
Operating	\$49,262	\$44,718
Special Activity	\$17,603	\$5,559
Century Club	\$24,553	\$25,641
Endowment	<u>\$42,949</u>	<u>\$43,520</u>
Total	\$134,367	\$119,438

The total cash balance for the NCC as of March 31, 2003 was \$119,438. Dennis also reported that the current balance of the mortgage was \$61,800. Total expenses for the completion of the Edna McMannus Education Center room \$17,000.

Committee Reports:

Acquisitions - *Lynn Welker*: There was a recent purchase of swans. Lynn also said that the museum needs donations. Recently a Crown Tuscan Flying Lady with Charleton Gardenia decoration was purchased. Lynn also asked for donations or loans of Imperial items for the Education Center. These items will be displayed side-by-side with their Cambridge counterpart to illustrate the differences.

Archives - *Mark Nye*: The Bill and Phyllis Smith Research Library at the museum is nearly completed. Research will be done only by appointment, a specific project must be listed on the request to use the room. There are still some paper items in the freezer waiting to be processed.

Budget and Finance - *Mike Stabler*: Continued development of the Finance and Budget analysis and preparation of the budget.

Bylaws - *Alex Citron*: No items pending.

Crystal Ball - *Alex Citron*: Concluded the second edition of the Crystal Ball test. Alex is working of the hyperlinks and other details. Alex stated that there will always be a paper edition of the Crystal Ball for those members that prefer to receive it that way. The next experimental electronic version will be available in September. Within the next 6 months or so, the Crystal Ball should be ready for distribution to all members. Alex thanked Jeannie Moore for her outstanding work as advertising director. Alex stated that the cost of printing the paper Crystal Ball was approximately \$6-7/member and the cost of mailing was approximately \$7/member, so the potential savings to the club by providing electronic copies of the Crystal Ball were quite large.

Endowment - *George Stamper*: George thanked everyone for their support.

Facilities - *Carl Beynon*: Repair work on the museum roof is scheduled for the week of July 8 or July 15. A water heater was also replaced.

Grants and Fundraising - *Sharon Miller*: The Century Club has almost raised the money needed for the roof. Fleur de Lys Healy has issued a challenge for this weekend. She will match up to \$5,000 all member donations. Sharon reported that more than \$3,000 had been received so far and she was confident that more than \$5,000 would be received before the convention was over.

Long Range Planning - *Doug Ingraham*: Hopes to have a report at the August meeting.

Membership - *Linda Adkins*: Freeman Moore will assist with membership development. There are 847 Master members, 370 Associate, 6 Honorary, and 5 Life for a total of 1,228. A moment of silence was observed for the members who passed away this past year.

Museum - *Cindy Arent*: A new major display in the museum dining room is courtesy of items from the Rick and Cindy Jones collection. There is a new display of Decalware in the special focus area of the museum courtesy of the Wollenhaupts and Huffords. This year will see the beginning of a 4th grade curriculum development program. Students will visit the museum and do several educational activities. There is also a Memory Book by the door of the museum that lists all gifts in memory of (or in the name of) someone. So far this year there have been over 600 visitors to the museum. There will also be an open house for National Tourism week.

Continued on page 13

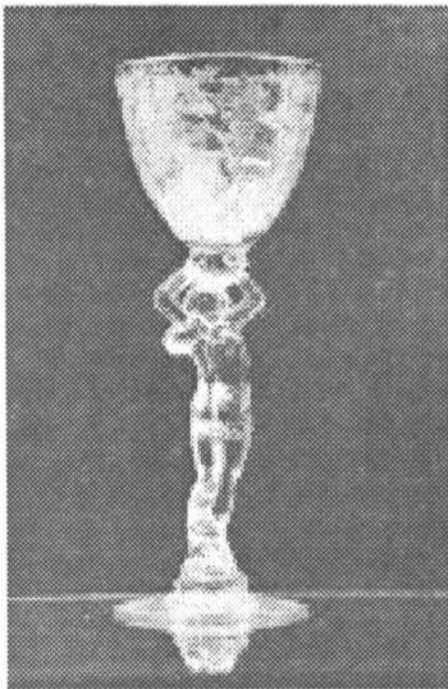
November Quarterly Meeting:

Featuring a Program on the #3011 Statuesque Line

by David Ray, Program Chairman

Have you mailed your reservations for the November Quarterly Meeting? If not, you have about three weeks remaining. Do not miss this rare opportunity to learn more about Cambridge Glass, shop for Cambridge Glass and talk Cambridge Glass with your fellow NCC members. This year's program on the 3011 Statuesque "Nude" Line promises to be exciting and informative. As with every November Program, the display will feature the most rare and beautiful examples from this line. If you are willing to contribute to the Nude display, contact Alex or Shelley at NCCcrystalball@aol.com.

The goal of this year's program is to display a wide variety of the many different pieces from the Statuesque line. The differences to



#3011 Claret, with gold-encrusted Rosepoint etch... one of many beautiful nudes in the November program.

be featured are bowl shapes, colors, cuttings, etchings, silver overlays, and enamel decorations. The 3011 line consists of 34 regular production shapes plus some one-of-a-kind pieces we all dream about finding at the local antique flea market. On pages 304-305 of the 1940's Catalog, there are 28 items shown. The other six regular production pieces include the short cupped comport, short shell comport, short shell comport with shell detailing, tall shell comport, tall shell comport with shell detailing, and the tall stem cocktail. (These numbers do not distinguish between bowls produced with the optic pattern and those without.) All attendees will receive the most complete and up-to-date listing of known 3011 items. Hope to see you there!

Cut here (or photocopy), and mail in registration form by October 23, 2004

**GO AHEAD AND SIGN ME/US UP FOR THE NOVEMBER MEETING
AT THE HOLIDAY INN OF CAMBRIDGE**

Name(s):

Phone #

E-Mail

Amount enclosed: _____ (\$18 per person, payable to NCC)

Mail by October 23rd to: NCC PO Box 416 Cambridge OH 43725

eBay Report:

Nudes

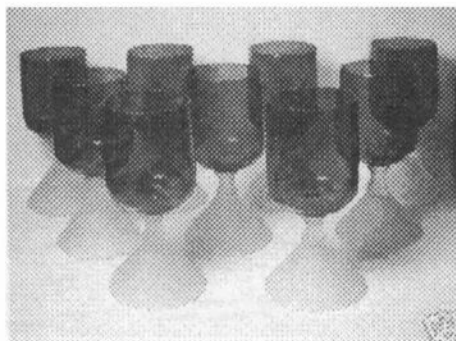
- A Pink Cocktail sold on August 22 for \$175.
- A Mandarin Gold Ashtray sold on August 19 for \$302.
- A Heatherbloom Claret sold on August 19 for \$705.
- A pair of CT Candlesticks, with moderately worn gold decoration, sold on August 11 for \$309.
- A Moonlight Blue Ashtray sold on August 10 for \$627.
- A Pistachio Cocktail with frosted stem and crystal foot sold on August 26 for \$185.

Figurals/Frogs

- A Peachblo Two Kid sold on August 9 for \$154.
- A 13" Light Emerald Draped Lady did not sell; the reserve was not met by a high bid of \$228.
- A Crystal Mandolin Lady sold on August 3 for \$190.
- A pair of Lady Legs Bookends did not sell; the high bid of \$305 did not meet the reserve.

Rosepoint

- A beautiful lot of nine Pressed Rosepoint Goblets, with Royal Blue bowl and unusual frosted crystal stem, sold on August 17 for \$455 (that's \$50 each).



- A pair of CT Keyhole two-light candle holders, gold-encrusted Rosepoint, sold on August 9 for \$132.
- An exceptionally rare 13" Amber #279 Vase, etched Rosepoint, sold on August 3 for \$1,231. (below)

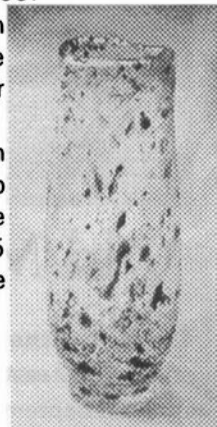


Other Etches

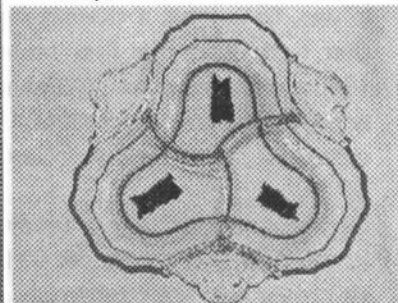
- A beautiful lidded pitcher, Gold Kristol etched Gloria, sold on August 11 for \$405.
- A pair of Light Emerald Bud Vases, etched Chrysanthemum, sold on August 10 for \$255.

Miscellaneous

- An 8-inch Swan in Light Emerald sold on August 22 for \$155.
- A seldom seen Mardi Gras Vase sold on September 7 for \$1,275.
- A Crown Tuscan advertising lamp did not sell; the high bid of \$655 did not meet the reserve.



- A #3400/91 3-part Relish with D985 (Three Canny Scotts) sold on September 4 for \$392.



- An unusual set of a Milk Glass #3400 pitcher and matching tumblers, all in brass Farber holders, sold on August 10 for \$128.
- A Bluebell Turkey sold on August 15 for \$600.



**FALL DEPRESSION GLASS
SHOW & SALE**

FREEPORT RECREATIONAL CENTER
130 East Merrick Road • Freeport, NY

SATURDAY, OCTOBER 23 • 12:00 TO 6:00
SUNDAY, OCTOBER 24 • 10:00 TO 4:00

Door Prizes
Reference Books
Unlimited Parking

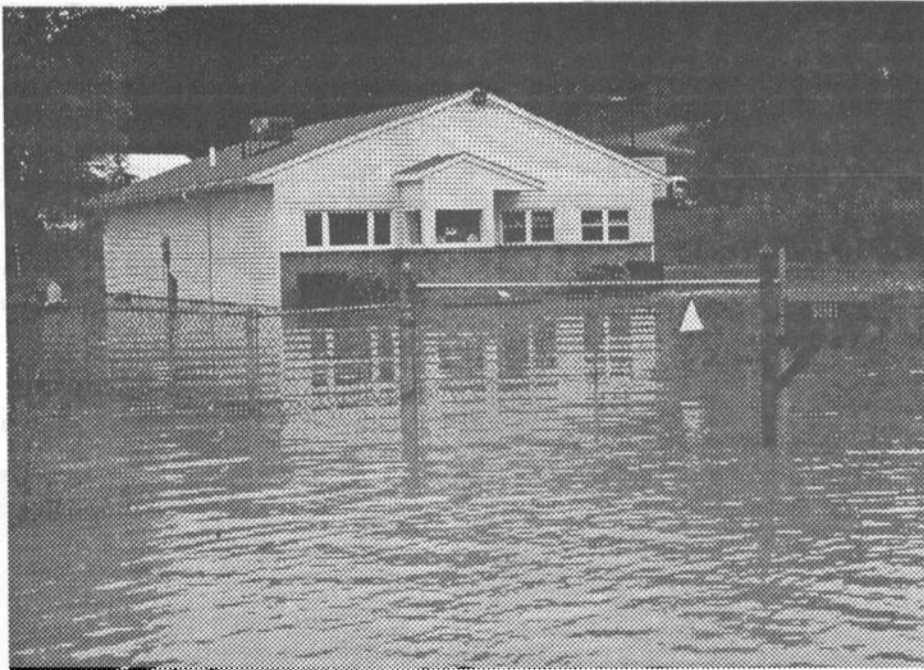
Free Depression Glass
TD and Appraisal
Sunday Only
(limit 6 pieces)

Grand Prize
Luncheon Set
CRYSTAL CANDLEWICK

DONATION \$5.50 • 2 FOR \$10
WITH THIS CARD

Sponsored by
The Long Island Depression Glass Society, Ltd.
For information, call (516) 798-0492

**Happy
Halloween**



Old Museum Site Floods Again

The former site of the NCC Museum, on Route 40 east of Cambridge, flooded again on September 8th and 9th, after eight inches of hard rain fell in a just a few hours.

It was, of course, a devastating flood that destroyed our first museum in 1998, and forced us to move ahead with what has become our beautiful, world-class museum in downtown Cambridge.

Carl Beynon and Cindy Arent drove out to the vicinity of the Route 40 building and could not safely approach. A passing motorist in a big 4-wheel drive vehicle was kind enough to take Cindy's camera into the flooded area and snap the picture above.

Water had already entered the building by the morning of September 9th, and the flooding was not expected to crest until the following day.

This was clearly bad news for the folks who had purchased the building after the 1998 flood. Given the NCC's experience six years ago, we certainly feel for them, and we're very grateful to be in our beautiful museum high above the floodwaters.

According to Cindy, parts of I-77 and I-70 were flooded, and Route 209 (Southgate Parkway) was closed. The rainfall and subsequent flooding were related to the system that had been Hurricane Frances.

NYC

Hi, fellow NYC Cambridge Glass addicts. Are you dying to talk with someone about your collection, share knowledge, ask questions, show off your glass? Well, so am I, so how about it? Let's start a NYC Study Group. Interested? Contact Barbara Ritchin at bsrphd@aol.com or on my cell at (917) 837-6520. I look forward to hearing from you.

CORRECTION

In my piece last month winding up the Convention, I neglected to thank my pre-convention helpers. Thanks to Shirley Beynon and Lisa Neilson for assisting with the registration process and to Dennis Snyder and Lisa for getting the bills paid. Once again, thank you to everyone who made convention special this year, especially those who attended.

-- Shelley Cole, Convention Chair

Cobalt Scotties Selling Well Order Yours Today



The Cobalt Blue Scotty Bookends, issued by the NCC earlier this year, have been selling well at shows and through mail order. In addition, the club has recently sold a few sets on eBay. Don't miss out on getting your own set... see page 16 to order. A few of the Red Scotties are also still available.

National Imperial Glass Collectors Society FALL AUCTION

Saturday, October 16, 2004

Preview at 4:30; Auction starts at 6:00 pm
Greystone Bldg. • 32nd & Guernsey Sts. • Bellaire, OH

Imperial and other depression-era glassware

Minutes of the Annual Meeting

from page 9

e

Crystal Ball

The electronic Crystal Ball is ready to go! After nearly a year of planning, and three test issues, we are pleased to announce the impending launch of a new generation of NCC communication.

As soon as we can collect the e-mail addresses of interested members, we will begin delivering the new, electronic Crystal Ball in full-color, via the Internet.

If you'd like to begin receiving the electronic Crystal Ball, please send an e-mail to:

NCCCrystalBall@aol.com

Just include your name and membership number (it's on your current Crystal Ball mailing label).

For now, if you sign up, you will receive both the printed and electronic versions. In time, members will be asked to choose which version they want. The printed version will continue to be available for those members who prefer it.

Don't miss out on the greatest improvement in NCC communications in history - send your request today.

The Cambridge Chamber of Commerce also attended a special viewing of the museum with over 75 members attending. Cindy also announced a special gift of two Carmen Gold Encrusted Rosepoint keyhole vases from Elizabeth Moe, one donated from Elizabeth and one in memory of her husband, Olaus. Cindy also reported that the new window treatments in the education center were made Yvonne Duft. Jane and Ken Filippini donated the fabric, in Cambridge Black and Gold.

Nominating - *Rick Jones*: Rick was pleased to report that the work of the committee was completed until next year.

Program - *David Ray*: If members have ideas for the November meeting, please get them to David. The November meeting will be the first full weekend in November (Nov 6th).

Projects - *Bill Hagerty*: Rick reported that the new Cobalt Scotties are available.

Publications - *Mark Nye*: The two books in Rock Crystal are available.

Publicity - *Lorraine Weinman*: Working to make the NCC more visible. Continued working with the tourism bureau and the glass pass. Kent Washburn issued a greeting as President of the NDGA. He thanked Jim and Nancy Finley for their wonderful display and presentation on swans at the Texas show. Kent also thanked Freeman and Jeannie Moore for their presentations and work in spreading the great information on Cambridge Glass.

Study Groups - *Judy Rhoads*: Judy reported that more than 35 members attended a productive meeting that morning.

Convention - *Shelley Cole*: Shelley thanked everyone for their attendance and asked to send in comments if you have them.

Technology - *Linda Roberts*: Not present. Dennis Snyder reported on the progress of establishing an e-Bay store.

Auction - *Squeek & Dorothy Rieker*: No report.

Glass Show and Sale - *Mary Beth Hackett & Joy McFadden*: No report.

Glass Dash - *Larry & Susan Everett*: The Glass Dash is tomorrow at 7:00 a.m.

Old Business:

Frank Wollenhaupt asked if all the ballots were marked as a measure to prevent tampering. Tarzan Deel reported that the ballots were all marked with invisible ink and anyone wanting to receive further information should contact him.

New Business:

Freeman Moore asked that members stop by the easel and list why they became a member of the NCC. Freeman will use the information for member development.

Georgia Otten moved to adjourn. Second by Doug Ingraham. Motion carried.

The NCC Board adjourned at 9:45 p.m.

Respectfully submitted,

Larry Everett, Ph.D.
NCC Secretary



Cuttings Catch the Light in White Plains

by Ken Filippini

In keeping with this year's theme and in celebration of the newest addition to the NCC Library of books, this year's display at the Great Northeast Glass Show was ROCK CRYSTAL ENGRAVINGS. We paid homage to both the luminously cut glass created by the Cambridge Glass Co., as well as the Herculean effort of Mark Nye to create the new Rock Crystal books. Thanks to Tarzan Deel, Rick & Cindy Jones, Ken & Jane Filippini for loaning the glass that made this display the success it was. The display drew much attention, and was partly responsible for the success of the NCC book sales table. It goes without saying that we sold all of the available ROCK CRYSTAL ENGRAVINGS books. Another



Above and at left: a sampling of the beautiful Cambridge Rock Crystal engravings on display in White Plains.



reason the NCC table was such a success was due to the generous members of the Elegant Glass Study Group who volunteered to help out. They cordially greeted visitors, answered many questions, and helped direct the show attendees to specific booths where they could find what they were looking for. All of these efforts helped forge new friendships for NCC. Thanks to Joanne Berringer, Myrle Scott, Lori Kratochvil, Gail & Paul Duchamp, Bill & Yvonne Dufft. Special thanks to Jeannie & Freeman Moore, who came all the way from Texas to share some of their time with us. Each year I suggest that you consider setting up a display at your local glass show, or similar event.

It is monumentally helpful to the NCC, as well as personally rewarding. Please give it a try, and if you need any help getting started, give me a call.

Some of the items on display included:

- 3500/42 12" urn; Engraving #1020
- 3500/21 12" Carmen oval bowl; Adonis
- 1299 11" Amethyst vase; elements of Engraving #542
- 3400/30 9 1/2" Willow Blue 2-handled, footed bowl; Engraving #560
- 3400/1188 11" bowl; Engraving #638
- 3400/1184 10" 2-handled bowl; Engraving #1032
- 6004 8" footed flower holder; Engraving #900
- #2 Martha Washington sticks, Moonlight Blue; Achilles
- 3121 5 3/8" blown comport; Croesus
- 3400/141 76oz Doulton Jug; Cordelia
- P499 6 1/2" Calla Lilly Sticks; Harvest
- P418 12" 5-part Celery & Relish; Thistle
- 3400/78 Cocktail Shaker with Ebony top; Engraving #541
- 300 6" Lt. Emerald candy box; Engraving #515



The NCC Book Table and Glass Display at the Great Northeast Show

Help Wanted

With major museum projects in good order, the Board is again turning toward our future and thinking about the most sensible plan for the Endowment Fund. We have one generous member with university development experience already pitching in. We would like to know if there are other members with related experience who would be willing to help; notably in the areas of legal affairs and estate planning. We also seek expertise in trademark and copyright law.

We are not sure what the ultimate roles would be, but wanted to survey our membership's expertise and find out what resources might be at our disposal.

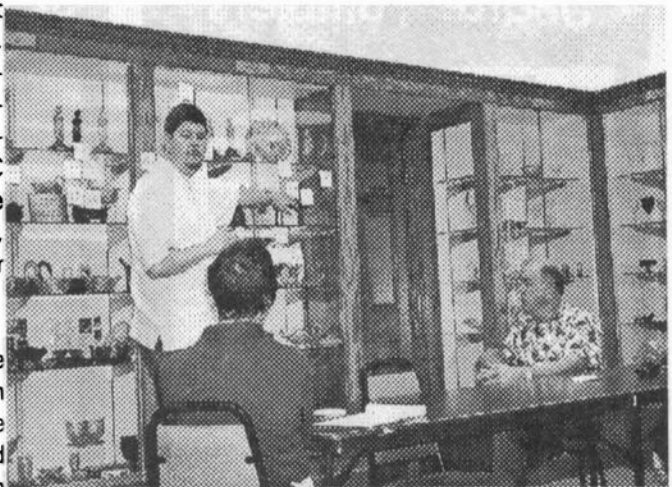
If you think you can help in any or all of these areas, please call President Ken Filippini at (201) 670-0990. Thank you!

Good Planning Almost Always Starts With Post-It Notes

Just before the August Quarterly Meeting, Doug Ingraham, Chairman of the Long-Range Planning Committee, led the NCC Board in an exercise designed to discover, clarify and prioritize our club's goals.

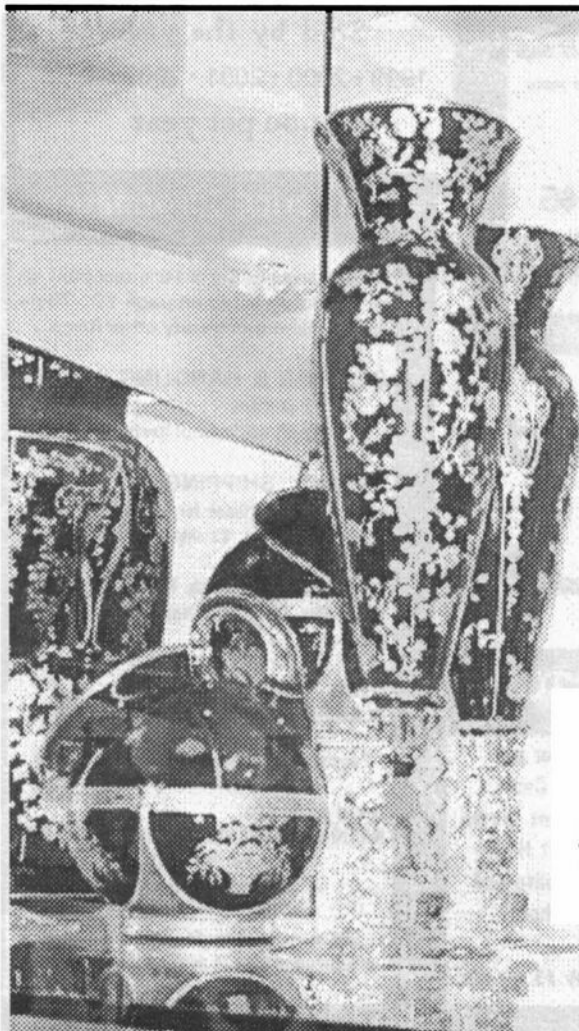
Board members were asked to envision where the NCC will be in the year 2010, and write their visions on Post-It Notes. The notes were then arranged to give the Board a clear snapshot of where we are headed and what it will take to get us there.

Word from the participants is that the meeting was informative as well as an



unexpectedly fine morning's entertainment.

The plans initiated on a handful of humble Post-It Notes will insure the continuing prosperity of our organization.



Hot Glass!!!

This exceptional pair of Carmen Keyhole Vases with gold-encrusted Rosepoint were recently donated to the National Museum of Cambridge Glass by member Elizabeth Moe, in memory of her husband, Olaf Moe. Make sure you have a look at them next time you're in Cambridge!

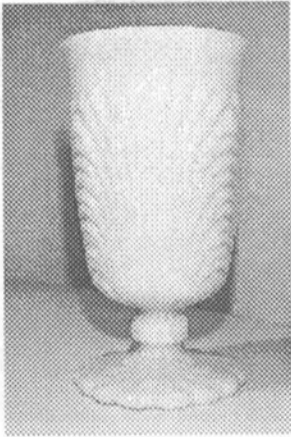
SEE THESE BEAUTIFUL VASES IN FULL COLOR
ON THE INTERNET AT:

WWW. CrystalBallPhotos.ORG

password: *goblins*

The Marketplace:

Jadite Tumblers



\$20 each; set of 6 for \$100
plus shipping charges of
\$3 each or \$10 for the set of 6

Made for the NCC by Mosser Glass
Marked on the bottom: NCC 2002

SCOTTY DOGS

**NEW Cobalt Blue
Scotty Dogs
\$100.00/pair**

**Red Scotty Dogs
a few are still available!!!**

**ORDER A PAIR TODAY
BEFORE THEY'RE ALL
GONE
\$100.00/pair**

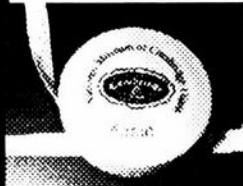
Books by Gene Florence

Very Rare Glassware (3rd Series)	\$24.95
Very Rare Glassware (5th Series)	\$24.95
Very Rare Glassware (6th Series)	\$24.95
Elegant Glassware (8th edition)	\$19.95
Glassware of the 40s-50s-60s (4th edition)	\$19.95
Glassware of the 40s-50s-60s (5th edition)	\$19.95
Stemware (Cordials) 1920s-1960s	\$24.95

**NCC Tote Bags
\$10.00**

MEASURING TAPE

*This handy, 60" measure will help
you ID that vase and make sure
about that platter.*



\$5
includes
shipping

NCC LOGO PINS

Show your pride in being a
Cambridge collector and a
member of NCC.



Only \$5.00
includes
shipping

Back Issues of The Crystal Ball

Sold by the year:
1999 • 2000 • 2001 • 2002 • 2003
\$5.00 per year

Ordering Information

NCC Members get a 10% discount on
all books so listed on page 17. There
are no discounts on any other items.

SHIPPING & HANDLING RATES:

First item	\$3.00
Each additional item	\$1.00

SPECIAL SHIPPING:

- Scottie Dogs: \$10/pair for shipping
- Salt/Pepper Tops: \$3 shipping for any size order
- Jadite Tumblers: \$3 each, \$10 for a set of six
- Logo Pins, Measures: shipping included in price

**OHIO RESIDENTS:
PLEASE ADD 7.5% SALES TAX**

Payments by check or money order only.

Send orders to:
NATIONAL CAMBRIDGE COLLECTORS, INC.
PO BOX 416
CAMBRIDGE, OH 43725

*Be sure to include your complete
shipping address and phone number.
Thanks!*

How to Order



SALT & PEPPER TOPS

Salt & Pepper Tops \$6.00 per pair
Polycarbon plastic, will fit most Cam-
bridge shakers such as Rosepoint footed
and flat-bottom shakers. Also fit Heisey
Rose, Saturn, Plantation, Crystolite and
some Orchid. Will fit some Anchor
Hocking and Candlewick.

Order 10 or more pairs, pay only \$5 per pair

VIDEOS

"The Crystal Lady" \$15.00

A video copy of an original Cambridge
Glass Co. promotional film showing the
making of a goblet in the Cambridge
factory. 25 minutes, B&W.

Grand Opening Video \$15.00

A high-quality video record of the
Grand Opening of The National
Museum of Cambridge Glass. 25
minutes, Color.

The Marketplace:

Books for Sale

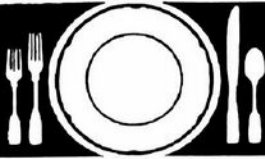
FOR ORDERING INFORMATION, SEE FACING PAGE

NCC Members receive a 10% discount on the following books:

1910 Near Cut	108-page reprint of the 1910 Catalog Paperback with price guide	\$14.95
1930-34 Catalog	250-page reprint of 1930 thru 1934 Catalogs Paperback with price guide	\$14.95
1930-34 Index	for above	\$2.00
1949-53 Catalog	300-page reprint of 1949 thru 1953 Catalogs Paperback with price guide	\$14.95
1956-58 Catalog	160-page reprint of 1956 thru 1958 Catalogs Paperback (no price guide)	\$12.95
Caprice	200 pages; lists colors, decorations, reproductions, etc. Paperback with value guide	\$19.95
Caprice Value Guide	2003 Values (when purchased separately)	\$5.00
Colors in Cambridge Glass	128 pages including 60 color plates; fully indexed Hard-cover with price guide	\$19.95
Decorates	136-page Paperback (no price guide)	\$14.95
Etchings, Non-Catalogued	70-page Paperback (no price guide)	\$12.95
Etching: Blossom Time	26-page Paperback (no price guide)	\$7.95
Etching: Candlelight	30-page Paperback (no price guide)	\$7.95
Etching: Chantilly	44-page Paperback (no price guide)	\$7.95
Etching: Diane	53-page Paperback (no price guide)	\$7.95
Etching: Elaine	64-page Paperback (no price guide)	\$9.95
Etching: Portia	57-page Paperback (no price guide)	\$7.95
Etching: Wildflower	42-page Paperback (no price guide)	\$7.95
NEW! Rock Crystal Engravings	Paperback (no price guide)	\$17.95
NEW! Rock Crystal Engravings: The Rosepoint	Listings by Mark Nye; a comprehensive guide to Rosepoint Showing all blanks plus history of the line. 94 pages; Paperback with value guide	\$9.95 \$14.95
Rosepoint Value Guide	Values as of 2002 (<i>when purchased separately</i>)	\$5.00

The following books do not offer any discounts:

NEW! The Glass Candlestick Book	by Tom Felt and Elaine & Rich Stoer Volume I: Candlesticks from Akro Agate thru Fenton Hardback, 254 pages, full color.	\$24.95
Charleton Decorations	by Michael & Lori Palmer; a comprehensive guide to Charleton; full-color. Hard-cover (no price guide)	\$29.95
1903 Catalog	106-page reprint by Harold & Judy Bennett Paperback (no price guide)	\$5.00
1927-29 Catalog	66-page reprint by Bill & Phyllis Smith Paperback (no price guide)	\$9.95
1940 Catalog	250-page reprint of the largest Cambridge Catalog (<i>loose 3-hole punched pages</i>) No price guide	\$25.00
1940 Catalog Binder	for above; with Cambridge logo on front	\$5.00
Reflections	by the Degenhart Paperweight & Glass Museum A history of Guernsey County glass production; 45-page Paperback	\$5.00
Stemware	by Mark Nye; shows all Cambridge stemware lines 167 page Paperback (no price guide)	\$19.95
Universal Dinnerware	by Timothy J. Smith. Includes Cambridge Art Pottery, Guernsey earthenware, Oxford Pottery and more. 176 pages, color, Paperback	\$29.95
Welker – Volume I	by Lynn & Mary Welker; reprints from several Cambridge Catalogs. 120 pages, Paperback (no price guide)	\$10.00
Welker – Volume II	by Lynn & Mary Welker; 15 color plates showing choice Pieces from their vast collection	\$5.95



Stems Without Thorns

As the world's largest supplier of old & new china, crystal, silver and collectibles, Replacements, Ltd. has more than 700 different patterns of Cambridge crystal.

And however much we enjoy selling pieces that were once thought irreplaceable, we love buying them as well. Thanks to people like you, our crystal inventory currently numbers in the hundreds of thousands, and the numbers keep growing every year.

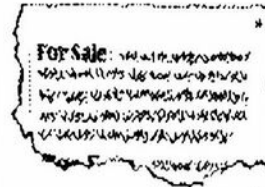
So, if you've been unsuccessfully searching for that elusive piece of Cambridge — or any other type of fine crystal — call us for a free list of pieces available in your pattern. And, if you're looking to sell pieces you currently have, we can help you there, too.

REPLACEMENTS, LTD.

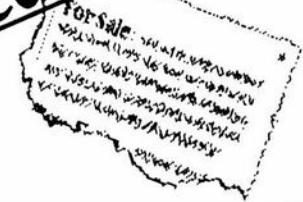
China, Crystal & Silver • Old & New

1-800-REPLACE
(1-800-737-5223)

1089 Knox Road.
PO Box 26029, Dept. CB,
Greensboro, NC 27420
www.replacements.com



Classified Ads



For Sale:

(2) #3121 10 oz Tumblers, Rosepoint etch \$35 each.
#3400/65 5-part Relish (no etch) \$25.
(a little extra for FedEx) Call: (937) 390-3617

Wanted:

FIND GLASS HERE... a "Wants" ad like this costs less than \$3, and reaches over 1,000 Cambridge collectors. You may locate that one elusive piece, or fill out a set!

ebay is not the only way... reach over 1,000 motivated Cambridge collectors who want to buy, sell or trade glass... see page 2 for pricing and details.

DEALER DIRECTORY

ALADDIN LAMP BOOKS

Free History of Aladdin Lamps
Figurine Lamps Wanted
Bill & Treva Courter

3935 Kelley Rd. Kevil, KY 42053
Phone 270-488-2116 FAX 270-488-2055

THE DEGENHART PAPERWEIGHT AND GLASS MUSEUM, INC.

P.O. Box 186
Cambridge, OH 43725-0186

Intersection of US 22 & I-77
Phone 740-432-2626

YOUR AD COULD BE HERE
ADVERTISE YOUR SHOP OR SERVICE
JUST \$24 A YEAR
SEE INSIDE FRONT COVER FOR DETAILS

Remember...

When writing to these dealers,
please include a self-addressed,
stamped envelope.

Glass Menagerie Antiques

Your Website for quality Glass from
the 20's, 30's, 40's & 50's.
www.glasstresurechest.com

GREEN ACRES FARM

2678 Hazelton Etna Rd.
Pataskala, OH 43062
(State Route 310 North)

Sat & Sun 1-7 pm 740-927-1882
Antiques, Crystal Glass & Collectibles

THE GLASS URN

456 West Main Street, suite G
Mesa, AZ 85201 480-833-2702
480-838-5936

Mail Order Shows Open Shop

CAMBRIDGE, FOSTORIA, HEISEY, etc.

Mac Miller

Fostoria • Cambridge • Carnival
Depression Glass • Books • Fiesta
and more

THE MARKET PLACE

(713) 467-0450 - BUS 10910 OLD KATY RD.
(713) 461-1708 - RES HOUSTON TX 77043

Fostoria Glass Society of America

Traveling Ambassadors
Ralph & Joyce Rider

For info: 817-545-5856
E-mail: r.rider@sbcglobal.net

YOUR AD COULD BE HERE
ADVERTISE YOUR SHOP OR SERVICE
JUST \$24 A YEAR
SEE INSIDE FRONT COVER FOR DETAILS

YOUR AD COULD BE HERE
ADVERTISE YOUR SHOP OR SERVICE
JUST \$24 A YEAR
SEE INSIDE FRONT COVER FOR DETAILS

YOUR AD COULD BE HERE
ADVERTISE YOUR SHOP OR SERVICE
JUST \$24 A YEAR
SEE INSIDE FRONT COVER FOR DETAILS

DEALER DIRECTORY

When writing to these dealers, please enclose SASE

DAUGHERTY'S ANTIQUES
Jerry and Shirley
Antiques and Collectibles • Mostly Glass
www.daughertys-antiques.com
e-mail: sdaugh2515@daughertys-antiques.com
Shows & Mail Orders 2515 Cheshire North
(402) 423-7426 evenings Lincoln NE 68612

Milbra's Crystal Buy & Sell
Replacement and Matching Specializing in
Cambridge,
Milbra Long (817) 645-6066 Fostoria, Heisy
Emily Seate (817) 294-9837 and others.
PO Box 784
Cleburne TX 76033
E-mail: longseat@sbcglobal.net
www.fostoriacrystal.com

BARNESVILLE ANTIQUE MALL
open 7 days, 8 - 5
Roger, Nancy and Brian Mayhugh
Owners
202 N. Chestnut St. 740-425-2435
Barnesville, Ohio 43713 3 floors
EXIT 202 OFF I-70 • always buying & selling antiques

THE TEAM
ESTATE SALES
Liquidations • Appraisals
Consignments • Senior Services
Estate sales with some style and a bit of flair
ED TUTEN 7007 McVay Place
901-758-2659 Memphis, TN 38119
www.teamestatesales.com

THE GLASS CUPBOARD
P.O. Box 652
West End, North Carolina 27376
Marcia Ellis Cambridge Show
910-673-2884 and Mail Order

FINDER'S ANTIQUE HOUSE
3769 Highway 29 North
Danville, VA 24540
(434) 836-6782
Cambridge • Heisey • Duncan • Fostoria
Open Wed - Sat 11 00 to 5 00 (seasonal hours apply)

Monday thru Saturday 10 - 5:30 Sunday 12 - 5:50
Bogart's Antiques
BUY-SELL-APPRAISE-REFINISH
CANE&REEDCHAIRS-CLOCK REPAIR
Jack & Sharon Bogart State Route 40
740-872-3514 shop 7527 East Pike
740-826-7439 home Norwich, OH 43767

BAKER FAMILY MUSEUM
805 CUMBERLAND ST.
CALDWELL, OHIO 43724
740- 732-6410
Mon & Thurs 9-4; Fri - Sat 9-5
Call for Sunday Hours

CRYSTALLINE COLORS
Buy, Sell and Appreciate
Cambridge and other Elegant Glass
I Love Cambridge
Lynne R. Franks 216-661-7382
Ohio Antique Malls

CRYSTAL LADY
Thurs - Sat 11-5
1817 Vinton St. Omaha, NE 68108
Bill, Joann and Marcie Hagerty
Shop 402-341-0643 Home 402-391-6730
Specializing in Elegant Glass & Collectibles
www.crystalladyantiques.com

Storck's Antiques
Rick & Joyce
Antiques & Collectibles • Glass & Pottery
Specializing in Fenton, Imperial & Cambridge
Shows & Mail Orders • Storck1@aol.com
Greenfield, MN 55373 • (763) 477-6415

 **Mother Drucker's**
Fanny Drucker
Specializing in Elegant Glassware
Shows and Mail Order
P.O. Box 50261 Phone: 949-551-5529
Irvine, CA 92619 888-MDRUCKER
Website: http://motherdruckers.com

Deborah Maggard, Antiques
Specializing in Cambridge Glass,
American Hand-Made Glass & Victorian Art Glass
We buy one piece or entire collections.
Please contact me at 440-247-5632
or e-mail at debmaggard@adelphia.net
P.O. Box 211 • Chagrin Falls, OH 44022


GLASS FROM THE PAST
Maureen Gillis

www.cyberattic.com/~glassfrompast/
email: tomopartners@snet.net
tel: 860-526-3413

JUDY'S ANTIQUES
Judy Bennett
422 S. Ninth Street (corner of Jefferson)
Cambridge, Ohio 43725
Business (740) 432-5855
Residence (740) 432-3045
CAMBRIDGE GLASS MY SPECIALTY

BRIDGES THRU TIME
Antiques & Elegant Glassware & Collectibles
Member of Greater Houston BBB
Located at Olde Carriage Shoppe
810 2nd Street • Rosenberg, TX 77471
For Web-Storefront and Auctions
Website: http://www.bridgesthrutime.com
E mail: imwolf@houston.rr.com

THE JONES GROUP
Cindy Jones
Buy and Sell Cambridge Glass
650 Riverside Drive
Sleepy Hollow, NY 10591
914-631-1656 or E-mail Caprice0@aol.com

 **Mary Jane's Antiques**
Early American Pattern Glass
Depression Era Items
2653 Burgener Drive 217-422-5453
Decatur, IL. 62521 mjhumes@aol.com

THE GLASS HOUSE ANTIQUE MALL
Furniture, Pottery, Glass
Antiques and Collectibles
I-70 Exit 146, East on SR 40
8825 E. Pike
Norwich OH 43767 TEL 740-872-3799

GATEWAY ANTIQUE MALL, INC.
JUST NW OF MINNEAPOLIS-ST. PAUL, MN
Next to Super 8 in Rogers, MN
(I-94/101 intersection)
7 days; 10am - 6pm • 763-428-8286
ELAINE STORCK, OWNER/DIRECTOR

ISAACS ANTIQUES
(740) 826-4015
See our booths in Penny Court Mall in
Cambridge and at White Pillars Antique Mall
(Route 40, one mile west of
I-70 Norwich, OH • Exit # 164)

PENNY COURT MALL
637 Wheeling Avenue
Cambridge, Ohio
100 Booths 15,000 sq ft
HOURS Daily 10-6 Sunday Noon-5
Closed: Easter, Thanksgiving, Christmas
Call for other holiday hours 740-432-4369

MARGARETLANEANTIQUES
2 E. Main St. New Concord, OH 43762
Lynn Welker (740) 826-7414
Cambridge Glass Matching Service
Hours: Mon-Fri 10-12 AM, 1-5 PM
or by appointment

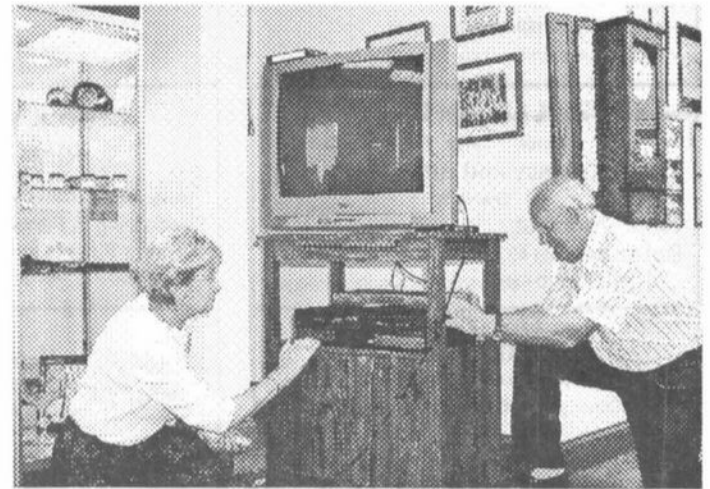
 **Our House Antiques**
Linda & David Adams
Las Vegas, NV
702-838-1341 or
800-357-7169
Web: www.OurHouseAntiques.com
E-mail: David@OurHouseAntiques.com 

Museum Goes DVD


Member Linda Adkins recently donated a DVD player to The National Museum of Cambridge Glass, the latest step in our club's progress into the digital age!

Meanwhile, members Ron and Halla Kotlarz converted *The Crystal Lady* video to DVD, allowing it to be shown to visitors with greatly improved sound and picture quality.

In a short time, *The Crystal Lady*, and possibly some other Cambridge videos, may be available for purchase on DVD. Watch "The Marketplace" in your Crystal Ball for news.



Sandi Rohrbough and Carl Beynon install the new DVD player. Many thanks to Linda Adkins for her generosity.



**South Florida
Depression Glass Club
31st Annual Show & Sale**
*American Elegant & Depression Glass,
Dinnerware, Pottery*

February 5 & 6, 2005

**War Memorial Auditorium
800 N.E. 8th Street
Ft. Lauderdale, FL**

**Saturday 10 am - 5 pm
Sunday 10 am - 4 pm**

Admission: \$5.00
(50¢ off with this card)

*Directions: I-95 to Sunrise Blvd. East,
turn South on US 1 for 2 blocks*

*Information: 305-884-0335
fboches@cheshirecatantiques.com*

**Glass Repair
Snack Bar - Door Prizes**

*Be sure to send in your registrations for the November Quarterly Meeting,
Dinner & Educational Program • the deadline is October 23rd.*

See Page 10

**NATIONAL CAMBRIDGE COLLECTORS, INC.
P.O. BOX 416
CAMBRIDGE OH 43725-0416**

Website: www.cambridgeglass.org
E-mail: NCCcrystalball@aol.com

**FIRST CLASS MAIL
US POSTAGE
PAID
PERMIT No. 3
CUMBERLAND OH 43732**

FIRST CLASS MAIL

*Membership Renewal Notice:
If the date above your name
is 10-04, this is your last issue,
and your NCC Membership has expired.
Please renew today.*