



Cambridge Crystal Ball

Published by the National Cambridge Collectors, Inc. as a resource which informs, invites and inspires people to encourage the continued preservation of the glass produced by the Cambridge Glass Company of Cambridge, Ohio for future generations.

Issue No. 461

September 2012

November Quarterly Meeting & Program

You just returned from that nice summer vacation but already the November Quarterly Meeting & Program are not far away.

This year's Program highlights one of the most popular and collected patterns produced by the Cambridge Glass Company – CAPRICE. Friends of Cambridge will hear from Rick Jones and David Ray about the creation, production items both regular and unique, colors, treatments, and reasons for the enduring popularity of this line.

The November Quarterly Meeting & Program will be held on Saturday, November 3, at Theo's Restaurant, 632 Wheeling Avenue in downtown Cambridge, Ohio, just a few blocks from the NCC Museum. Cocktail hour begins at 5:00 PM followed by a buffet dinner at 6:00 PM. If you are bringing glass for the program or show and tell, plan to arrive at Theo's no later than 5:15 - 5:30. The menu for this year's buffet includes: carved beef tenderloin, chicken Monterey with mushrooms, broiled filet of cod, green beans almondine, steamed broccoli & cheese, butter parsley red potatoes, salad, bread, assorted deserts and beverage. The cost of the dinner is \$19.50 per person. The Quarterly Meeting and Program will follow dinner as well as the Bring and Brag presentation hosted by Lynn Welker. The deadline for receiving reservations is Saturday, October 20, 2012.

Since Caprice was produced for over 20 years, over the lifespan of numerous colors and treatments, there are

endless possibilities of different items to be produced. Accordingly, you are nearly certain to see something that you have not seen before! Rick and David would like for you to bring any unusual or unique items that would add to the Program display. Contact Rick at caprice0@aol.com, or David at westvillesh@hotmail.com if you have any questions about items that would be helpful in displaying the extent of this impressive line. Stems can generally be excluded.

For those Friends of Cambridge arriving to Cambridge early, there is plenty to do. Several quality antique shops and malls are located within an hour of Cambridge. The Dickens Victorian Village "performers" and scenery, by that point installed at their many appointed stations up and down Wheeling Avenue and elsewhere, will be waiting to greet you.

The Glass Swap begins at 3:00 PM at the Museum. The Glass Swap provides any NCC member an opportunity to sell some Cambridge or other glass. If you are interested in selling glass at the Swap, please limit yourself to around 20-25 items. Yes, a set of 12 pressed Caprice goblets in amethyst can count as 1 item. Tables will be provided. If you plan to sell at the Swap, please mark the appropriate box on the registration form.

We hope to see you in November!

**The Registration Form for the November Quarterly Meeting
and Program is on Page 11**

National Cambridge Collectors, Inc.

PO Box 416 Cambridge, OH 43725-0416

Board of Directors

Cindy Arent	Ken Filippini	Nancy Finley
Les Hansen	Rick Jones	Larry Everett
Freeman Moore	Mark Nye	David Ray
Mike Strebler	Lynn Welker	Frank Wollenhaupt

Officers

President	David Ray
Vice-President	Ken Filippini
Secretary	Freeman Moore
Treasurer	Mike Strebler
Sergeant-at-Arms	Mark Nye

Director of Strategic Planning	Rick Jones
Director of Human Resources	David Ray
Chair, Standards Committee	Sharon Miller
	Larry Everett - Committee Member
	Susan Everett - Committee Member
	David Ray - Committee Member
	Mike Strebler - Committee Member

Member Services

Vice President	Frank Wollenhaupt
Member Relations	(vacant) Director of Member Relations
	Tarzan Deel - Membership Data-base Administrator
Crystal Ball Convention	Helen Klemko - Executive Editor
	Julie Buffenbarger & Nancy Finley - Convention Directors
Digital Media	Alex Citron - Manager of Facebook Operations
Member Meetings	(vacant)
Study Groups	Jeannie Moore - Study Group Coordinator

Development

Vice President	Larry Everett
Campaigns	Ken & Jane Filippini - Annual Fund Directors
	Larry Everett - Director of the Heritage Society
Events	Jack & Elaine Thompson - Auction Managers
	jack1746@roadrunner.com
	Lynn Welker - Auction Manager
	Joy McFadden - Show Manager
	Mary Beth Hackett - Show Manager
	Larry & Susan Everett - Glass Dash Managers
Projects	Carl Beynon - Jeweler & Scotties Project Manager
Publicity	Frank Wollenhaupt

Education

Vice President	Les Hansen
Publications	Mark Nye - Director of Publications
Research	Mark Nye - Archivist
Programming	Greg Vass - Director of Programming
NCC History	Mark Nye - Archivist

Museum

Vice President	Cindy Arent
Public Operations	Sandy Rohrbough - Docent
	Betty Sivard - Docent
	Sally Slattery - Docent
Facilities & Grounds	Carl Beynon - Director of Facilities
Collections	Lynn Welker - Director of Collections
Merchandise Sales	Lynn Welker - Gift Shop Manager
	Cindy Arent - Gift Shop Manager
Community Relations	Cindy Arent

Administration

Vice President	Mike Strebler
Accounting & Finance	Lisa Neilson - Office Manager
Risk Management	(vacant)
Payroll	(vacant)
Information Technology	David Adams - Webmaster
Legal	(vacant)

ADDRESS CHANGES

Please send address changes to:
 Membership - NCC
 PO Box 416
 Cambridge, OH 43725
 or by e-mail to:
tarzandeel@verizon.net

WEBSITES

- **NCC WEBSITE**
www.CambridgeGlass.org
- **MIAMI VALLEY STUDY GROUP WEBSITE**
www.mvsg.org

CONTACTS

NCC Museum (phone)..... (740) 432-4245
nccglass@yahoo.com
 David Ray, President.....
 e-mail: westervillesh@hotmail.com
 Freeman Moore, Secretary.....
 e-mail: freemanmoore@verizon.net
 Helen Klemko, Crystal Ball Editor.....
 e-mail: ncccrystalball@gmail.com

The National Museum of Cambridge Glass



Located at 136 S. 9th Street in downtown Cambridge, OH
 Wed-Sat 9 a.m. - 4 p.m. - Sunday Noon - 4 p.m.
 General Admission \$5 - Seniors & AAA members \$4
 NCC Members and children under 12 FREE



PRESIDENT'S MESSAGE

Collecting In the 21st Century

How has your approach to collecting Cambridge glass changed over the past 20-30 years? My parents introduced me to the glass-collecting world in the fall of 1989. Each Saturday, we searched central and eastern Ohio for new shopping destinations while also returning to our favorite shops and malls. At least two weekends per month, we attended an antique show or outdoor flea market. Between the weekend shopping excursions, we spent hours planning future trips and seeking out new shopping destinations. I can still remember my first trip to the Riverfront Antique Mall. During that era, all communication occurred via telephone or word of mouth. Google and email had not yet been invented!

Each spring, our thoughts and energy began to focus on the third and fourth weekends of June. If you were collecting Cambridge glass in the 1980's and 1990's, you may remember the Land of Legend Antique Show held at Granville High School, in Granville, OH? Hundreds of collectors planned their summer vacations around this show, knowing it represented best glass-shopping opportunity of the year. The highest-quality glass dealers from throughout the country convened in Granville to display their finest merchandise. I recall hustling from room to room to search for new pieces of Cambridge crystal Caprice and Heisey Lariat to add to my collection. In association with the Land of Legend Antique Show, an outdoor flea market opened at 5:00 am. Hundreds of shoppers used flashlights to identify their purchases. For several hours, collectors roamed the parking lot of Granville High School hoping to find additions to their collections. One year, I had the good fortune of purchasing a Cambridge crystal turkey for my collection.

Although the Heisey Convention Glass Show in Newark, OH was not directly associated with the Land of Legend Antique Show, both shows benefited from their close proximity and timing. The Heisey Glass Show started the following day. Most of the glass dealers at the Heisey Show presented a sufficient amount of non-Heisey glass that many Cambridge glass collectors found attending the show worthwhile. Finally, on Saturday morning, several local glass dealers set up on the square around the Licking County Courthouse in Newark. For at least two or three hours collectors shopped as dealers continually set out glass. Wow, that was fun!

Back in that era, Cambridge glass collectors from out of the general area had two options. They could go home and return a few days later for the NCC Convention or they could remain in Ohio until the NCC Convention began on Wednesday. For those who stayed, high-quality pieces of Cambridge glass could frequently be purchased at local shops and malls. Unfortunately for me, my focus at that time was only on crystal Caprice, and I had little knowledge of other patterns or lines of glassware. The

NCC Convention Glass Show opened late on Friday afternoon. Hundreds of Convention attendees and glass enthusiasts lined up in anticipation of storming the show room. Many avid collectors waited more than 8 hours to secure a premium position near the front of the line. Once the show opened, collectors ran in all directions searching for new and exciting additions to their collections. At the close of the glass show Friday evening, enthusiastic discussions began in anticipation of the Flea Market (now the Glass Dash) on Saturday morning.

Let's fast forward to 2012. How have your collecting experiences changed? For me, I now typically start and end my day by carefully searching 3 to 5 glass-related websites for newly listed pieces of Cambridge glass. In addition, there are thousands of dealer websites for your shopping enjoyment. In 1996, eBay became a major force in the glass-collecting world. Glass from around the world became available to everyone. Collectors learned the Cambridge Glass Company shipped beautiful pieces of glass to Australia and the Cambridge flower frogs were very popular sellers in England. Many current collectors dedicate several hours each week to searching the internet in lieu of travelling to antique shops, flea markets, and glass shows. Although many collectors are successful shopping the internet, personally, I still prefer the experience of attending an antique show or flea market to interact with people face-to-face.

The internet certainly provides for collectors an easy method for acquiring Cambridge glass. On eBay alone, thousands of pieces of Cambridge glass are available for purchase at any one time. As I write this article, a Bluebell 8.5" Draped Lady and a Violet #66 Caprice bowl are currently listed for sale on eBay. Before the internet, these two unusual items would likely have been first sold to a local glass dealer before being exposed to the broader glass-collecting world. I have participated in many discussions on whether the internet has helped or hurt the glass market. After each discussion, the conclusions were mixed. The internet has its advantages, but the opportunity for creating personal relationships and long-lasting friendships is much more difficult. I believe the large volume of glass available to the buying public on the internet has reduced the enthusiasm for "hunting" for glass. Glass is available 24-7. It seems most collectors enjoy shopping the internet, but prefer hunting for their glass treasures the old-fashioned way.

Happy collecting!

David Ray
westervillesh@hotmail.com

CHAPTER 3 - “The WOW Factor”

(At the end of Chapter 2, Rich and Steve walked through a corridor that led to rooms of spectacular Cambridge glassware.)

The entire ceiling was covered with hanging-glass chandeliers and ceiling lights. There were etched, plain, cut, frosted, and even colored. We walked up to the upper level to see the designs: Rose Point, Candlelight, Marjorie, Adams, Cleo, Elaine, and many others. The cut pieces had floral designs and the colored pieces were actually topaz bowls in Weatherford. Some even had prisms attached. These were beautiful. One ceiling light was from a Near Cut 12-inch crystal table lamp. It would have been so nice to flip on a light switch and go back to the seating area to view these amazing lights.

It was time to look for more. Room Number Eight was straight ahead. Cabinets were everywhere. They were in the middle and along the walls, loaded with vases. It was like a sample room of every type of vase they ever made. I told Steve, “I’m going to enjoy this room because I love to collect vases.”

The first color I saw was carmen, and it was fantastic. There was a pair of carmen cornucopias, gold-encrusted Wildflower. “You’ve got to be kidding.” Next was a crown tuscan pillow vase with green Japonica. Unreal. There’s a another pillow vase in satin crystal with black enameled skiers going down the slope. Each panel had a separate skier.

Steve noticed another pillow vase in carrara and just as unusual as the other two. This one had red and blue skiers on each of the panels also. It actually looked like they were on snow.

Nearby were bud vases. The first was a Number 274, 10-inch royal blue, gold-encrusted Rose Point and a forest green in gold Gloria. Near that was the same shape, but in carmen Candlelight. This was too good to be true.

A different shape appeared, and it was a pair of eight-inch footed Snail vases, the first being amethyst Japonica and the second, gold-encrusted Chintz on royal blue. Those were knockouts. The Chintz piece also had a royal blue base with gold Chintz.

Crystal was next. It was the 11-inch footed Nautilus vases with college enameled varsity sports logos. I saw USC, Pitt, OSU, Michigan, and Northwestern. One shelf was dedicated to the flying oranges, tomatoes, and lemons, in several styles of vases. Another shelf had crown tuscan vases, one standout being an 11-inch footed Number 1299 bell shape with gold-encrusted butterflies.

Another superb crown tuscan piece was a 12-inch keyhole vase with red enameled Lily of the Valley etching. What a fabulous piece.

There were literally dozens more throughout the room, but we had to move on. The next room was wall-to-wall animals. Many were crystal, but colored ones caught our eyes first. Steve noticed a forest green turtle planter, then a colored bunny box in rubina. Wow!

Not to be outdone, there was also a colored turkey in rubina, and the color was perfect. Then we saw a pair of dolphin candlesticks in azurite with Stratford bases with the bases completely done in gold.

Another knockout was a frog vase with detail in pink opalescent. Over to my left was a piece no one could possibly have imagined. It was a tri-colored eagle bookend in carmen, carrara and royal blue. “How patriotic is this?”

Close by were a pair of crown tuscan scotty dog bookends, and not just plain. They were gold-encrusted Chintz on the box of the base. Next we saw the monkey and owl lamps, the first being the traditional, brown painted ivory monkey followed by an incredible carrara monkey with pink glass eyes. This was insane. Steve said, “How can you not like this? It’s definitely your type of piece.” There were three owls and they were very unusual, too. First was what appeared to be amberina. It was. This was way too cool. I could definitely find a place for this in my own collection. Next, we saw the owl in topaz. And special, at that. It had brown glass eyes, and sat on a topaz base. Another jewel. The third was amber and had been frosted. It was truly lifelike. It felt as smooth as silk. Why they never made more of these, I’ll never know.

As we scanned the end of the room with our flashlights, we saw something glistening. “Oh, my God.” It was a table of swan punch bowls in crystal and they were beautiful. Steve said, “In all the years you’ve collected, how many colored swan punch bowls have you seen?” “I’ve seen and held a Type 3 milk white and I’ve heard the stories about the elusive carmen.”

“Well, Dad, that’s about to change. Look over here.” “Oh, my God.” Behind Steve was another table of swan punch bowls. And there it was. A Carmen, Type 2 swan punch bowl. Tears instantly came to my eyes. I couldn’t believe I was in the presence of this wondrous beauty. I’d looked almost my entire life for it and there I was about to touch it.

“The WOW Factor”

- continued

As I walked over to it, Steve said, “Dad, there’s more.” He flashed his light to his left. There was a Type 2 moonlight and a Type 2 forest green swan punch bowl. I never thought in a million years this would be possible. No one had any proof of these being made. All the former glass workers I’d ever talked with never, ever mentioned these last two colors. I realized I had to do the unthinkable, which was to leave this room and leave these beauties behind. But before I left, I would touch and hold the masterpieces.

Our curiosity was starting to overwhelm us. We headed for the corridor to find Room Ten. We anxiously entered the room and it was beautiful. I think that Hershhal Hancock literally might have had a hand in this. The room was filled with cut glass. Every conceivable piece you could think of was right before our eyes. We saw: Adonis, Maryland, Achilles, Belfast, and Broadmoor on the first table. Mr. Hancock at his finest. It would have been a wonderful learning experience to be in Mr. Hancock’s cutting department watching him and his cutters creating these magnificent designs. As we looked ahead, we couldn’t believe what we saw. It was 18-inch floor vases, all hand cut, and not just crystal. I think by looking at Steve’s eyes, they told the story. He was in awe as much as I was.

We walked towards these monstrous beauties. The first vase was definitely a knockout. It was carmen, cut Achilles. And beside it was amber, cut Candlelight. I couldn’t even come up with words to describe what we were seeing. I always thought the crystal floor vases were incredible, but these colored vases, plain and simply, took my breath away. Steve said, “We’re not finished yet, the next vase is gold krystol, cut Adonis, and a moonlight cut in Maryland.”

Our lights flashed to the other side of the room and we thought we were seeing doubles. Not exactly. These were actually 18-inch electrified floor lamps in the same colors and cuttings. They sat on brass bases and had glass cut covers. The cut covers were domed and really set the floor lamps off. This would have been a very proud moment for Hershhal Hancock and his masterful cutters.

As we were walking toward the door, I told Steve, “This will be a time in our lives that we will never forget.”

(To Be Continued...)

A Look Back In Time October 1937 contributed by Mark Nye

This is another in the on-going series of letters from the Cambridge Glass Company sales office to its agents. This one does not present a new item, rather it was designed to promote an existing item, the No. 654 Epergne.

October 2, 1937
654 Epergne

To All Agents

The question has been brought up several times by some of our representatives and customers relative to the #654 Epergne. They have said it was too small and it would take a pair of them on a table that they might use it successfully.

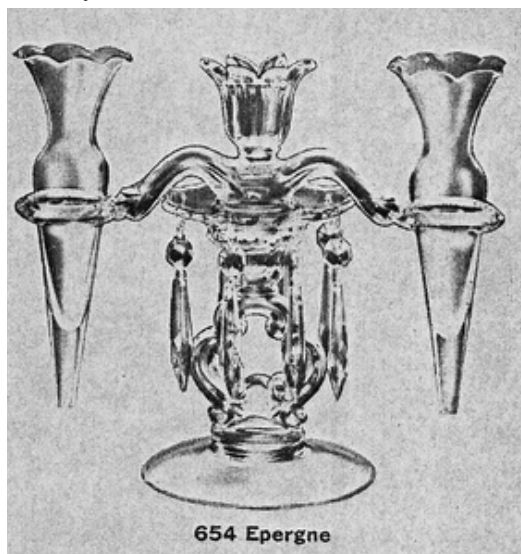
Now, this is partly true but when we explain it to those bringing up this question, they very readily saw the point in the use of this Epergne

True, this Epergne only holds one candle and we made it purposely so. It is made so that it can be used in pairs, one at each end of a long table, or one of them can be used on a small table set for four.

One of the greatest uses for this particular Epergne is for the bridge table and perhaps it would be a good plan to call it the Bridge Table Epergne and to have the stores so advertise it. Picture to the buyer and the retail customer the bridge game and the hour when it comes to serve the lunch – the hostess clears the table and puts on the lunch cloths and sets in the middle of each table one of these Epergnes. From this you can go on and picture the party.

There are so many ideas that can be worked out in connection with this particular Epergne that we leave it to your ingenuity to work out and make the suggestions to the customers.

Yours truly,
THE CAMBRIDGE GLASS COMPANY
W.C. McCartney



Friendships Created Via Glass

By David Ray

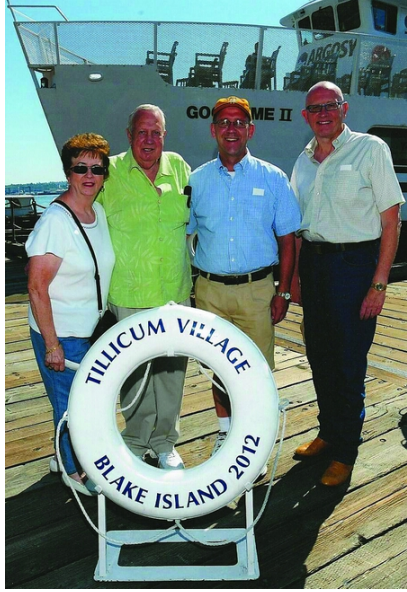
Memories and friendships created through my affiliation with NCC have been my greatest reward. In February 2012, I had the privilege to represent NCC at the Green River Depression Glass Show in Kent, WA, which is a suburb of Seattle. During that trip west, NCC members, Swede and Kay Larsson, extended an invitation to Les Hansen and me to return in July for site-seeing adventures and to shop the Portland Expo Antique Show in Oregon. After multiple telephone and email communications, plans to visit the Great Northwest were finalized.

Our trip to Washington was an awesome vacation. Of course, I flew from Columbus, and Les flew from Minneapolis/St. Paul. Our flights arrived in Seattle within an hour of each other. We had done some pre-planning, but there was plenty of time for two-hour breakfasts and unlimited cups of coffee each morning. Swede and Kay are gracious hosts, and we stayed in their home. Any plans I had for sticking to my diet vanished shortly after arriving. Swede is an excellent cook, and he prepared delicious meals during our stay – including a large Dungeness crab for each of us one evening. Swede’s cooking role model is Julia Childs, who strongly believed “butter” makes everything taste better.

Fellow NCC members, Tim and Robin Cook, also live in the Seattle area. Swede, Kay, Les, and I visited their newly remodeled home our first evening in town. Tim and Robin have a beautiful collection of Cambridge glass as well as several pieces produced by the Blenko and Viking glass companies. Fortunately, Tim and Robin were able to join us several more times during the week for food, antiquing, and conversation.

On Thursday evening, Swede, Kay, Les, and I boarded a ferry boat across Puget Sound for a one-hour journey to Tillicum Village located on Blake Island for a traditional Native American feast which included fire roasted King Salmon. During the meal, local Native Americans told an interesting history of their culture through interpretive dances and story-telling.

During the three-hour drive to Portland Friday morning, we had conversations



Swede & Kay Larsson, David Ray and Les Hansen boarding the ferry across Puget Sound to Blake Island

about what we hoped to find at the antique show. Neither Les nor I had previously attended the Portland Expo Antique Show, so we did not know what to expect. Supposedly the show was to have 1100 dealers, but every antique enthusiast has had their dreams dashed by antique shows advertising a large number of dealers. Having little in the way of expectation is a win-win situation for everyone. The outdoor portion of the antique show began at 8:00am while the indoor dealers opened for business at 10:00am. The majority of the indoor dealers had quality merchandise for sale and nearly every dealer had some glass. Many nice pieces of Cambridge glass were available for sale, but a piece of Faberge priced at \$195,000 gained a lot of attention. The difficulty with flying to an antique show is getting your purchases home safely. With some careful planning and packing, all but one of our glass purchases arrived home safely. An amethyst 1066 ivy ball was broken during the return flight.



Photo taken on Blake Island

about cheese production. At the end of the tour, we were invited to sample all of the different cheeses produced at the factory. The Sharp Cheddar was my personal favorite. Before leaving, each of us visited the ice cream counter where we selected two or three of our favorite flavors which were piled high on a waffle cone.

After leaving the cheese factory, we travelled Rte. 101 north along the Oregon coast. We were treated to spectacular views of the Pacific coastline. Within a couple hours, Swede started talking about a family-owned bakery he enjoyed visiting during his frequent Oregon fishing trips. The pastries were works of art and tasted great. For the next three mornings, we enjoyed pastries with our breakfast.



David Ray with Robin & Tim Cook

Our vacation culminated with a trip to Mount Rainier

Friendships Created Via Glass - continued

National Park. While driving through the native pine forests on our journey to more than 5,000 ft. above sea level, Swede provided endless stories from his many years working as a log truck driver. Nearing the highest point along the road, we had opportunity to play in the snow.....in July. Due to the more than 30 ft. of snow that blanked the mountain last winter, the roads were not cleared until Memorial Day. Several feet of snow still remain along the roadway. After enjoying many amazing views of the mountain, we agreed to have dinner at the nationally-known Pick-Quick Drive-In near Tacoma, WA, where they serve tasty, old-fashioned hamburgers and delicious milk shakes.

Our six-day visit to the West coast passed too quickly. The hospitality shown by Swede, Kay, Tim, and Robin was greatly appreciated. Les and I hope to visit again soon.



David & Les at Mount Rainier National Park



David holding his prize purchase...
Windsor Flying Lady Bowl

NCC at NDGA 2012

The National Depression Glass Association (NDGA) convention was held July 14-15, 2012 in Kokomo, Indiana. Thirty-two dealers came from across the United States to spend the weekend at the Kokomo Event Center. Over 150 people enjoyed the Saturday evening banquet to “dine with the cars” in the adjacent Automotive Museum. As usual, there was an outstanding set of displays in the program room. Cambridge glass was well represented in the display room with a fabulous display by Linda and David Adams of Cambridge decorated opaque items.

Jeannie and Freeman Moore staffed the NCC Book and information table. We were easy to find at the end of the first aisle, with an extra chair for people to sit and rest. In addition to having books for sale, we had an educational display with 16 different sherbets. We provided several people with details about glass they had brought in for information. We enjoyed visiting with several local NCC members who stopped by our information table including: Jack and Elaine Thompson, Frank and Vickie Wollenhaupt, Bob and Margaret Downing, in addition to Ron and Norma Hufford.

NDGA selects a different location for its annual convention and show held in July. Last year was San Antonio, Texas; this year was Kokomo, Indiana; and next year will be Wellington, Kansas; home of the new NDGA museum. This allows people to visit other areas and interact with local dealers. NCC has had an information table at prior shows, and we planning to participate again next year in Kansas.

As usual, our thanks to NDGA for providing space for our table and supporting the sharing of information among the various glass organizations.



Vicki Wollenhaupt and Jeannie Freeman “man” the NCC book and information table.

National Cambridge Collectors, Inc.
June 2012 Annual Meeting

President David Ray called the June 2012 Annual Meeting of the National Cambridge Collectors, Inc. to order on Saturday June 23, 2012 at 8:25 pm. The meeting was held at the Pritchard Laughlin Civic Center with over 90 members in attendance.

Larry Everett moved (second by Jeannie Moore) to waive the reading the March 2012 Quarterly Minutes. After hearing no requests for corrections, the minutes of the March 2012 Quarterly Meeting, as printed in the April 2012 issue of the Crystal Ball, were approved.

Administration – Mike Strebler presented the treasurer’s report. All of NCC’s financial documents are posted on our website and everyone is encouraged to look at them and ask questions as needed. The financial forecast is for about a \$20K surplus this year, partly due to the March benefit auction generating more than budget. Ken Filippini talked briefly about the Ellis Challenge, with more information forthcoming in the Crystal Ball.

Development – Larry Everett expressed thanks to the dealers and helpers. Larry announced the Board has approved a change to the show schedule for 2013 allowing it to be open on Sunday; exact hours and convention schedule details will be worked out soon.

Education – Les Hansen reported that Greg Vass has the November program organized, covering Caprice and will be presented by Rick Jones and David Ray. Thanks to the presenters at this year’s convention: Rich Bennett, Mark Nye, Lynn Welker. The topics (tally ho and imperial hunt) had not been covered before in the Crystal Ball. David Rankin video-recorded the presentations and will be working to make them available.

Member Services – Frank Wollenhaupt reported on promoting this year’s show, including a radio spot. Volunteers to help in membership functions are needed, contact Frank for further information.

Museum – Cindy Arent expressed thanks to people who made donations to the museum collection and gift shop. Cindy thanked the members for the three feature displays, which are receiving great reviews: 1) gold encrusted Portia by Mike & Lisa Strebler, 2) rare and unusual items by Lynn Welker, and 3) light emerald by several people. Cindy reported the members feature room for 2013 will host a Morgantown glass display by Leora Leasure and Sandy Bridwell-Walker. As always, thanks to everyone who volunteers at the museum.

Convention – Nancy Finley and Julie Buffenbarger thanked everyone for attending this year’s convention. Nancy acknowledged the displays in the Pritchard Laughlin Civic Center by Rick & Cindy Jones, and Tarzan Deel.

Member Report – Tarzan Deel asked for a moment of silence to recognize the passing of members over the past year. Ed Allman, Peggy Burris, Bob Ellis, Lucile Kennedy, Marion Kuhlman, Joe Solito and Blair Stewart.

New Business:

Rick Jones discussed the proposed change to section one of the Constitution that was published in the April 2012 Crystal Ball,

representing a tweak to the Mission Statement. Rick Jones moved to accept the changes as published, second by Mark Nye. Approved.

Upon hearing no further old or new business, Rick Jones moved to adjourn, (second by Tarzan Deel).

Meeting adjourned at 8:50 pm
Respectfully submitted, Freeman Moore

A Look Back In Time
February 1939

This announcement, sent to all Cambridge Agents, needs little comment. Using the prices quoted, the price the wholesale customer would pay is \$3.00 for each candelabrum or \$6.00 per pair. While not mentioned in this letter, the bobèche used was the No. 20. As with other company letters, the use of capital letters here is as it was in the original

February 24, 1939
Cut Shank Candelabrum
#1272

To All Agents:

We have recently been getting some calls for a Cut Shank Candelabrum.

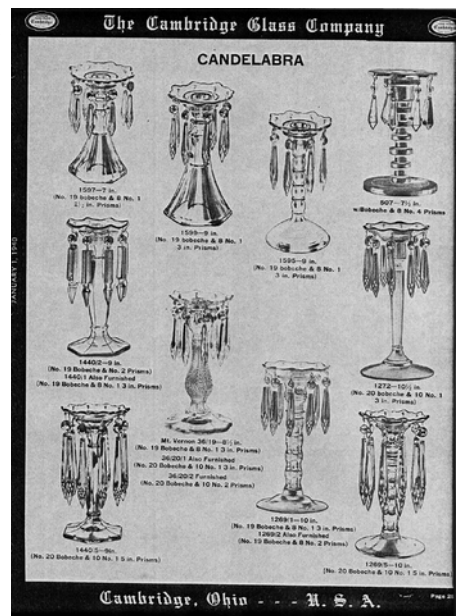
We have tried out in one or two places \$1272 with the cut shank or stem, with ten of the #1 5 inch long prisms. Our customers are very much pleased with it and advise us that such a Candlestick can be sold with any cut Bowl.

These finer customers have told us it is not necessary to cut the feet of the Candlesticks with the same cutting as in on the Bowls and say if we simply make a nice cut shank candlestick it can be used with any cut bowl.

It is, therefore, with this thought in mind that we are adding this #1272 stick to our line. The price will be \$90.00 per dozen list. We would suggest a retail price of \$10.00 per pair⁴ for these, as this makes a nice profit but of course if a store wants to double there money they will have to get \$12.00 a pair.

If you wish a sample of this, please advise and we will immediately send it to you.

Yours truly,
THE CAMBRIDGE
GLASS COMPANY
W. C. McCartney



Renningers Summer 2012

From Azurite to Topaz

By Lisa Helm

For some reason Renningers managed to pick the nastiest weather weekend of the summer. It was hotter than hot and the storms were pretty rough, but other than that we had a blast!

We arrived early Thursday morning and went straight to Kutztown. Man was it hot! Key here is to drink plenty of water. The field didn't seem to be as full this year. I guess between the economy and the weather, there were a lot less vendors. It took us a few hours to go through everything and we managed to find a few deals. Everyone, even though it was hot, was in a good mood, especially those in the shade.

After we went through Kutztown, we were both pretty tired from the heat and hungry, so we started towards Adamstown and a bite to eat. After lunch we went to Pine Hills, where one of the workers was telling us about his mother's Gloria collection. While he's telling us about this amazing collection, I'm scanning the area just in case there's that special piece. Then he switches gears and starts telling us about this really cool piece of Mardi Gras. Well, let me tell you, he said Mardi Gras and I stopped in my tracks and he had my full attention. My little brain is trying to figure out how we can get this piece of Mardi Gras. It's amazing how many scenarios a brain can play out in a matter of seconds. As I'm trying to stay focused on what he's saying all I hear in his next breath is one guy sold it a few days ago to another guy. Really dude? You're telling me this now? I just smiled and said, "Oh well, better luck next time." I won't tell you what I was really thinking.

We looked around in the mall and picked up a Rosalie nut cup in amber to add to our smalls/barware collection. They also had a beautiful Rosalie Cheese set in green I was thinking about. It was too big for the collection, so we passed.

Next we went to our favorite mall, Mad Hatter. I probably looked like a mad woman as I went through the door, and straight to the two cases I wanted to look at first. Dave is so good to me, he let me stand there in a moment of silence while I was trying to take it all in. Then my heart stopped. Dave pointed out behind a gorgeous carmen swan, three pieces of sunset. Really, who has sunset in their collection. Ok most of you do, but for us in the sahara of no glass land, we don't. As I was dancing around like the Mad Hatter, a really nice lady saw me and opened the case. I was looking at three tumblers, from 3 oz. on up. They were so pretty, I couldn't help but be excited. This case also had a few other pieces we wanted. With all our purchases up at the front desk, we shopped the rest of the mall.

After that I was too excited to shop anymore...almost. We hit a couple of other places, picked up some more items and called it a day.

Early Friday morning we heard it raining like someone was beating the roof in. We quickly realized it was hail. The storm seemed to calm down after awhile and we went back to sleep. When we got up and looked out there was storm damage everywhere. Even our little table and chair on our patio was turned over.

We quickly got up and had breakfast at our favorite place, Dave's Diner and on to Shupp's Grove. You could see the damage that the

storm had on this area the night before. I kept watching the grounds keepers take out tree limbs that had fallen in the storm. For the most part it seemed they were ok. We walked around and found a couple of deals. Here, like Kutztown, the vendor attendance was down, but most were in good spirits. There was one vendor who had a large selection of glass and they were cutting some serious deals, but I was waiting for that special piece. I was still thinking of that Rosalie piece at Pine Hills. There was something about it that caught my eye, but I never pulled it out to really look at it. We walked around Shupp's Grove for a few hours and picked up a few things and decided it was lunch time.

Once lunch was done, we went to other malls and got a couple of little tidbits and even managed to find some Heisey.

Saturday, after breakfast at Dave's Diner with our new favorite waitress Vickie, we headed to Stoudt's. We browsed around and didn't find what we were looking for, but they did have some beautiful furniture. Good thing we didn't bring the truck.

After Stoudt's we stopped by Renningers, Adamstown, even though it really didn't start until Sunday. There were a few dozen vendors there and we picked up a really nice watch for my boss (I hope I can wait until Bosses day to give it to her) and a piece of Heisey. We ventured back to Shupp's Grove and walked around and saw there were more vendors, but still nothing we needed. By this time I was feeling a little depressed I hadn't bought any Cambridge all day. I was still thinking about that Rosalie piece. That's when I decided, no I'm not going back. So I put it out of my mind.

Sunday I woke up with a new outlook. I thought today we are going to find something. We went over to Renningers and there were a few things here and there in the pavilions. As we wandered over to the field BAM, there they were Bill and Yvonne with a table full of glass. The four of us talked while I drooled over their glass trying to decide what to get and then up walks a person I didn't know, John. We all shared our adventures about the different goodies we saw over the weekend and John said he was going to go back to one of the malls for a piece of glass he was really wanted, but I told him too late it's in my trunk. Then we told them about the Rosalie piece that we were really interested in. It ends up Yvonne bought that piece and the reason it caught my eye is it was green enameled. You know that Mardi Gras piece I mentioned earlier? Just so happens John sold it to Bill. Maybe one day I can see it in person. Dave kept telling me he recognized Bill from somewhere and then it hit Bill that we were at the same auction a few months ago and the two of them chatted in line while checking out. We got a few pieces from Yvonne and Bill. They told us where their case was in Mad Hatter and we found out John was the one I bought a bunch of stuff from at Mad Hatter on Thursday. He just replenished it the day before. So, back to the Mad Hatter we went to see the new items and buy some more.

Of course, as soon as I got back I e-mailed Tarzan to share with him some of our adventure and was sorry that he couldn't make it. This was one of our better trips to Adamstown and Kutztown. Sure, we always find Cambridge and Heisey there, but this time we found something better. New Friends.

ONLY QUESTIONS - NO ANSWERS

By Frank Wollenhaupt (fewvic303@sbcglobal.net)

What a month! Hottest July on record in Ohio and no rain to speak of and when we do get some rain it comes with high winds and a lot of damage. We just need about three days of a nice slow gentle rain.

With all the neat things that Rich is finding (Dreaming) it is hard to come up with some actual questions. I can just dream the answers and go on with my day. NOT!!

Have you ever just taken one of the catalogs and just looked through it page by page, front to back? I have done that many times and every time I come away shaking my head and wondering WHY?

I can remember a day many years ago we were sitting in a conference room at the old Imperial Glass factory going through a Cambridge catalog they had. Lucille Kennedy had told us about the catalog and gave us permission to look at it. We were also able to take some photos of it. I think it was Dave and Joy McFadden, Vicki and I. There were lots of new and interesting things in the catalog but the one thing that really caught our attention was on page 33-20, the Hld. Frog Vase. I think we all let out a yell. I know the people trying to work gave us a real strange look. If you look at that page or look at the complete book, that vase doesn't belong there. It's out of place on that page and out of place with the rest of the 30/34 catalog. After finding that, we were able to talk Imperial into lending us (NCC) the catalog and allowing us to have it reprinted. A lot has happened since that book was published in 1976.

The one thing that makes the discovery so interesting was that I had found one of the frog vases two or three years before and was told that it was an Italian import.

Another strange item is in the Welker reprint Book 2, page 119, the #2825 5 inch Old Rose Candlestick. The rest of the items on the page are pretty simple items but the "Rose" shows lots of mold work. To date, I have never seen this item and don't know of any in collections.

Speaking of complicated mold work, take a look at page 106 in the same reprint. The fish and the peacock really stand out. If you have a chance to examine the tankard or tumbler, you can see how detailed the mold work is. When compared to the other Near Cut items, these two stand out miles above everything else. They even used a fish as the handle on the fish tankard. As long as we are asking questions, why don't we see these in carnival glass?

Might try and channel some of these questions through Rich and see if he can get some answers from Mr. Bennett. He seems to be able to tap into the spirit world.



#2836 tankard half gallon with fish



#2836 tumbler with fish



#2837 tankard half gallon with peacock

1920s -1352 - 30 oz. handled frog vase



In Memoriam
Oscar Kniceley

Long-time member, Oscar Kniceley passed away on April 7th. He was 77. Oscar was a frequent convention and auction attendee and known to many as one of the runners at our Annual Benefit Auction.

Oscar is survived by his wife Laura, children David and Darlene, stepchildren John and Karen and seven grandchildren. Oscar was a U.S. Army veteran who served in Vietnam. He was a tax administrator at C.C.A. in Cleveland. He loved golf, bowling, fishing, travel, and of course, his Cambridge Glass. Oscar was member #4632.

REMINDERS: If you have an address change, please let us know. I know it is a busy time when you have to pack and move, but put NCC on your list of “Things To Do”. Also, if you are spending your winters in a warmer place, send us your temporary address so we can make sure you receive the Crystal Ball. Then, let us know when you return home.

Also, the email address for the Editor of the Crystal Ball has changed. It is now **ncccrystalball@gmail.com**.

Register Now for the November Meeting

Make check payable to: NCC
Mail to: NCC, PO Box 416, Cambridge, OH, 43725
Registration Deadline: October 20, 2012

The November Quarterly Meeting and Educational Program will be held on Saturday, November 3, 2012, upstairs at Theo’s Restaurant, 632 Wheeling Avenue, Cambridge, Ohio. This year’s program, given by Rick Jones and David Ray, will be on Caprice. As usual, there will also be a member Show & Tell session.

The evening starts with cocktails at 5:00 and a buffet supper at 6:00, followed by the NCC Quarterly Membership Meeting and Educational Program.

Tickets are \$19.50 per person, and must be ordered in advance. Send in your check with this form (make a copy if you don’t want to cut up your Crystal Ball).

NAME : _____

ADDRESS: _____

CITY: _____

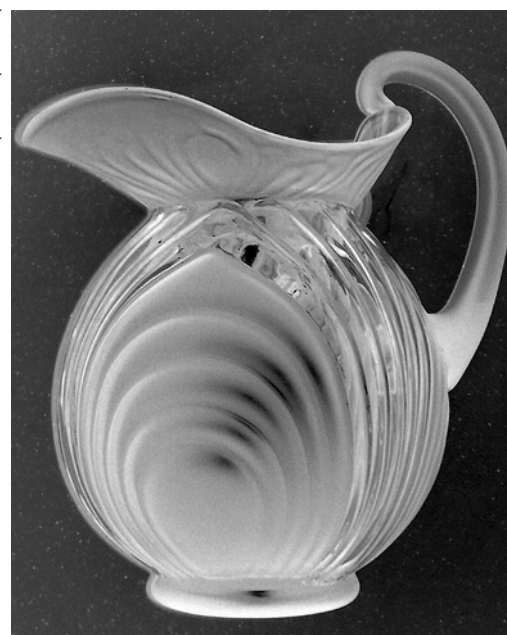
STATE, ZIP: _____

E-MAIL: _____

Check here if you will bring glass to sell at the Swap Meet which will commence at 3:00 p.m. at the Museum []

Number of tickets for November Meeting _____

Amount enclosed @ \$19.50 per person _____



Greetings from eBay land! Thanks to my many friends that send news and interesting items to me at: heartlamps@sbcglobal.net. This report is on real Cambridge items, not imaginary figments that may appear from an "underground" author.

Rose Point:

A lot of eighteen pieces of 3900 Rose Point sold for a mere \$107.21, that's less than \$6 per piece. A nice pair of two lite 1268 (keyhole) candelabrum with etched bobeches ended at \$102.50. A single Carmen GE 3500/5 8 1/2" salad plate sold for an astounding \$1,157.31! Hold on to your hats! A rare Carmen 3126 - finger bowl, GE Rose Point almost did twice that when the dust settled at \$2,025! I guess a setting for 12 is out of the question.



GE Rose Point 3500/5 8 1/2" salad plate



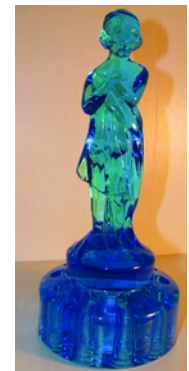
Clock candy container with the lid

Statuesque:

A 3011 ash tray with an Amethyst top went for \$201. A lovely 3011 covered cigarette box and ashtray with Royal Blue tops sold for \$406. A SS11 - 7" statuesque comport in the hard to find Windsor Blue flew to \$504. A 3011/40 flower or fruit center (Flying Nude) bowl sold for only \$211 in Crystal and another example in Amethyst (chip in the bowl) managed \$1,275.10.



3011/40 flower or fruit center (Flying Nude) bowl



#518 - Draped Lady

Other Etchings:

A cute #153 covered mustard with spoon etched Wedgewood ended at \$26.99. A rare Lt Emerald covered cigarette jar E Rosalie sold for \$74.99. Also in Lt Emerald was a covered 3 part 9" relish E732. This beauty sold for \$76.03. A nice Gold Krystol 3400/40 - Sugar Shaker with a glass Top, E Apple Blossom found a sweet spot at \$235.50.



Ebony 1044 - 10" Swan (Style 1)



Windsor Blue SS11 - 7" statuesque comport

Miscellaneous:

A colorful litter of Cambridge pencil dogs (looked to be Pink, Amber and Gold Krystol) sold for \$71. A rarely seen Clock candy container with the lid timed out at \$83. Two Carmen 1621 - 10" Footed Urn Vases sold. One brought \$71 and the other \$61. A Frosted Amber No. 509 - 9" - 2-kid Figure Flower Holder ended at \$95. Two #518 - Draped Lady Small Figure Flower Holders sold. The hard to find Gold Krystol Lady brought \$155 and the really hard to find Blue Bell example brought \$1,010. A group of four 3 1/2" swans (three Royal Blue and one Crown Tuscan) fetched \$98. And ending this month's report is an Ebony 1044 - 10" Swan (Style 1), she regally swam to \$302.

Happy hunting!



Lt Emerald covered 3 part 9" relish E732



509 - 9" - 2-kid Figure Flower Holder



#153 covered mustard with spoon etched Wedgewood



2013 NCC Auction Consignment Procedures

Once again it is time to submit to the Auction Committee your list of Cambridge Glass to be considered for inclusion in the annual NCC Benefit Auction. The auction will be held on Saturday, March 2, 2013. The lists only (no glass) will be accepted from now until the end of September. Let's help make the 2013 version as exciting and successful as the 2012 auction.

Anyone may consign glass to the auction. Donations are welcome and encouraged. There is no limit to the number of items that can be considered for the auction, but normally the maximum accepted from any one consignor is 20 to 25. **We implore the consignors to inspect their glass carefully for any and all damage, and to only submit quality, undamaged glass.** If a piece of glass does have an issue, please include a detailed description with your list. This is a benefit auction for your favorite club, and we want to realize as much profit as possible. **Donations are ENCOURAGED, and 100% of the purchase price goes to NCC.** Some lower-value donated pieces may be sold in the museum's gift shop rather than be included in the auction, if the committee feels that will yield a better price. On all consignments, NCC retains 20% of the purchase price, the consignor receives 80%. This auction does not allow for reserves or minimum prices. There are no buyer's premiums charged.

During the months of August and September the committee will accept lists of proposed lots to be considered for the auction. Please try your best to identify your pieces as accurately as possible. Pictures are encouraged. All lists should be emailed to Jack Thompson at jack1746@roadrunner.com. Please indicate "NCC Auction" on the subject line and include a mailing address and phone number. Lists can also be mailed to NCC Auction Committee, P.O. Box 416, Cambridge, Ohio 43725. Please include your phone number. **All lists must be received by the Auction Committee on or before September 30th.** The committee would like to communicate via email as much as possible to save time and postage. If you have email, please utilize it with us.

After the committee reviews all lists, we will select approximately 400 lots. Consignors will be notified (usually by mid-October) by email or regular mail, as the case may be, which pieces have been selected. If you question why certain pieces are not chosen, it does not mean that they are undesirable, and we encourage you to submit them again another year. It can mean different things: we already have chosen a similar piece from another consignor, or we can only accept a certain number of pieces from each consignor to be fair to all.

All glass accepted, whether shipped or brought to Cambridge in person, must be received by the November Quarterly Meeting, on Saturday, November 3, 2012. The ship-to address is also provided along with the notification. For those consignors able to bring their glass with them while attending the November Quarterly Meeting, you save on shipping charges, avoid potential breakage in transit, and, best of all, you get to attend a great NCC function. An excellent dinner and program accompany the meeting. In the event that we accept an item based on the consignment list, and it is determined not to be Cambridge glass, we will hold it for pickup by the consignor, arrange for return, or (in a few cases) offer it for sale through the museum's gift shop.

The committee needs to strictly adhere to all dates mentioned as we only have a few short weeks to properly inspect, identify, and have a completed auction catalog sent to the Crystal Ball editor, so that it can be included in the January issue and posted on the NCC web site. We would like to thank all consignors in advance for their timeliness in each step of these procedures.

We encourage you to consider consigning and donating some good quality pieces of Cambridge glass. If you have any questions, please feel free to email at jack1746@roadrunner.com. And for complete auction info, don't forget to check out our Auction web site at www.cambridgeglass.org and click on the Auction tab. We are excited to see what you have in store for us this year!

In Memoriam

Tom Smith

Long-time friend and dealer for NCC, Thomas K. Smith passed away unexpectedly on July 11th. Tom, 54, was preparing for the NDGA national convention that upcoming weekend in Kokomo IN when he suffered a heart attack and did not recover from his injuries.

In most recent years, Tom was a regular dealer in our Glass Dash and had been a dealer in the main NCC Glass Show during the 1990's. A respected glass authority, Tom was the author of Fenton Glass Rarities, 1907-1939. Born in Peoria IL, Tom graduated high school in Indianapolis, attended Purdue University and worked as a land surveyor for 20 years. In 1995, Tom followed his passion for antique glassware and became a full time glass dealer and non-profit volunteer. He was a charter member of the National Fenton Glass Society and served as their President for several terms.

NCC Events

November Quarterly Meeting &
Educational Program
November 3, 2012
Program Entitled
"Caprice"

NCC welcomes the
following new members

Lynn Carter & Virginia Raskin	Florida
Susan Boyer	Pennsylvania
Karna Wahlstrand	California

If you know about any upcoming glass shows or other glass events, please pass the word on to us at least six to eight weeks before the show dates. These listings are free of charge.

DEALER DIRECTORY

Joanne & Janine Bender Specializing in Depression Era Glassware We Buy & Sell	
PO Box 1007 Pebble Beach, CA 93953	
831-647-9957	jjdbender@aol.com
831-647-9949	www.benderglass.com
J & L Treasures Specializing in Depression Glass Heisey, Cambridge, Fostoria, Morgantown, Tiffin, etc.	
Linda Kilburn PO Box 1257 Burlington, CT 06013	
860-673-4088 (Answering machine - leave message)	
Ohio Valley Antique Mall 7285 Dixie Highway (Route 4) Fairfield, OH 45014 Cincinnati's Largest Multi-Dealer Antique Mall Hours: DAILY 9:00 a.m. - 9:00 p.m.	
513-874-7855 www.ohiovalleyantiquemall.com cfaxon@ohiovalleyantiques.com	

Glass Shows

September 8 - 9, 2012
Pike's Peak Depression Glass Club Show & Sale
Castle Rock, Colorado
719-598-1424

September 15 - 16, 2012
Depression Glass Club of Rochester Glass Show & Sale
Rochester, New York
dgclub@rochester.rr.com
Web: dgcrochester.org
585-544-3315

October 5-6, 2012
Heart of America DG & Pottery Show
Independence, MO
816-308-7495
Email: hoagc@juno.com
www.hoagc.org

October 6-7, 2012
Garden State Depression Glass Show
Edison, New Jersey
thelegantable@verizon.net
609-240-3765

October 13 - 14, 2012
Iowa Depression Glass Club Show & Sale
Des Moines, Iowa
idgc@earthlink.net
515-360-5369

October 13 - 14, 2012
Northeast Florida Depression Glass Club Show & Sale
Jacksonville, Florida
www.depressionglassclubjax.com
904-268-5550

October 13 - 14, 2012
Wichita Glass Gazers
25th Annual Depression Era Glass Show & Sale
Wichita, Kansas
316-524-1553
aglassgazer@netscape.net

October 19, 2012
Long Island Depression Glass Society Show & Sale
Freeport, New York
www.lidgs.org
516-798-0492

October 20 - 21, 2012
Milwaukee's 36th Annual Depression Glass Show & Sale
Milwaukee, Wisconsin
kgoebel2@wi.rr.com
262-376-9874

November 3 -4, 2012
Upper Midwest Depression Era Glass & Pottery Show
Bloomington, Minnesota
www.glassshow.com/Shows/Minnesota/bloomfall.html
firesidant@aol.com
651-770-1567

DEALER DIRECTORY

Dealer Directory - \$24 for 12-months, size limited by box (see below). Includes listing on NCC website.

Advertising Rates:

1/8 page \$15 1/4 page \$20
1/2 page \$30 Full page \$50
(plus \$5 per photograph)

Electronic submissions should be emailed to:

ncccrystalball@gmail.net

Use Word. Mailed submissions and all payments should go to PO Box 416, Cambridge, OH 43725. Deadline is 10th of preceding month. Ads must be paid in advance. Show listings are FREE; send info to PO Box or e-mail address 60 days before event.

ALADDIN LAMP BOOKS

Aladdin Electric Lamps
SB, 229 pp., \$24.95 to C.Collectors PP.
J.W. "Bill" Courter
brtknight@aol.com
550 Pioneer Ln. Phone 270-488-2116
Calvert City, KY 42029

Max Miller

Elegant Glassware • Books • Fiesta
...and more
THE MARKET PLACE
(713) 467-0450 - BUS 10910 OLD KATY RD.
(713) 461-1708 - RES HOUSTON TX 77043
MMXGLASS@aol.com

Cheshire Cat Antiques

Specializing in elegant depression to mid-century era glass and vintage kitchen glass.

Francee Boches > 305-884-0335
fboches@cheshirecatantiques.com



BAKER FAMILY MUSEUM

805 CUMBERLAND ST.
CALDWELL, OHIO 43724
740-732-6410
bakermuseumnellbaker@msn.com

Wed & Thurs 9-4; Fri - Sat 9-5

Classified Ads - Reach over 1,000 avid collectors of Cambridge Glass

CRYSTAL LADY

1817 Vinton St. Omaha, NE 68108
Bill, Joann and Marcie Hagerty
Shop 402-341-0643 Home 402-391-6730

Specializing in Elegant Glass & Collectibles
www.crystalladyantiques.com

Glen & Carolyn Robinson White Rose Antiques Specializing in Depression Era Glassware

2454 McFarland Road
York, SC 29745

803-684-5685
gandcrobinson@aol.com
whiteroseglassware.com

CRYSTALLINE COLORS

Cambridge • Fostoria • Elegant Glass
Penny Court Mall, Cambridge - 2 booths
Riverfront Antique Mall
New Philadelphia, OH (I-77, exit 81)
Booth #'s 626 and 616

Lynne R. Franks 216-661-7382

GLASS FROM THE PAST

Maureen Gillis



www.glassfromthepast1.com
email: maureen@glassfromthepast1.com

Cherished Collectibles

Shopping 24 hours in our online store
Glassware, Figurines, Collectors' Plates

www.cherishedcollectibles.com
Elegant and Depression Era Glass

TWEAK COLLECTIBLES

Specializing in Elegant Glass
BUY & SELL
WANTED: CAMBRIDGE TURKEYS
417-742-3653
btummons@aol.com

VIRTUALATTIC AT THE GLASS CHALET

SPECIALIZING IN ELEGANT DEPRESSION ERA GLASS
Sandra L. Bridwell-Walker PO Box 3448
William P. Walker Cleburne TX 76033-3448
Phone: 817-202-0940 www.virtualattic.com
Sandy's Cell: 817-559-0328 virtualattic@sbcglobal.net
theglasschalet@sbcglobal.net
Bill's Cell: 817-357-7084

Daugherty's Antiques Jerry and Shirley Antiques & Collectibles-Mostly Glass

www.daughertys-antiques.com
email: sdaugh2515@daughertys-antiques.com

Shows & Mail Orders 2515 Cheshire North
402-423-7426 (evenings) Lincoln, NE 68512

THE GLASS HOUSE ANTIQUE MALL Furniture, Pottery, Glass Antiques and Collectibles I-70 Exit 146, East on SR 40

8825 E. Pike
Norwich OH 43767 TEL 740-872-3799

Milbra's Crystal Buy & Sell

Replacement and Matching
Milbra Long (817) 645-6066
Emily Seate (817) 294-9837
PO Box 784
Cleburne TX 76033

Specializing in
Cambridge
Fostoria, Heisey
and others

E-mail: longseat@sbcglobal.net
www.fostoriacrystal.com

ISAACS ANTIQUES

(740) 826-4015

See our booths in Penny Court Mall in Cambridge and at White Pillars Antique Mall (Route 40, one mile west of I-70 Norwich, OH • Exit #164)

The American Bell Association International, Inc.



7210 Bellbrook Drive
San Antonio, TX 78227-1002
www.americanbell.org

MARGARET LANE ANTIQUES

2 E. Main St. New Concord, OH 43762
Lynn Welker (740) 826-7414

Cambridge Glass Matching Service
Hours: Mon-Fri 10-12 AM, 1-5 PM
or by appointment

Our House Antiques



Linda and David Adams
Las Vegas, NV
1-800-357-7169

www.OurHouseAntiques.com
email: David@OurHouseAntiques.com

National Cambridge Collectors, Inc.
PO Box 416
Cambridge OH 43725

website: www.cambridgeglass.org
e-mail: ncccrystalball@charter.net

Friends of Cambridge – Annual Fund

NCC exists through member giving using an Annual Fund system to raise operating funds and to ensure the preservation of Cambridge glass for future enthusiasts. The Annual Fund uses a common member "renewal" date and NCC sends out Annual Fund materials to everyone once a year during March/April. There are no monthly reminders or monthly renewal dates. The Annual Fund is NCC's primary means of support and all Annual Fund gift recognition levels are per household and include membership for all adults within the household. Additionally, each household will receive a subscription to the Crystal Ball newsletter, unlimited admissions to the museum, and rights to vote in elections for the Board of Directors. Multiple households at the same address are welcomed. NCC is a 501C(3) organization and Annual Fund gifts are allowed as a tax deduction under Section 170 of the Internal Revenue Code.

Levels of Membership

Patron	\$35
Benefactor - Century	\$100
Benefactor - Mardi Gras	\$200
Benefactor - Japonica	\$500
President's Circle	\$1,000

President's Circle includes Convention registration for two members in the household and one copy of any new NCC publications.

The National Museum of Cambridge Glass

*Open April thru October
only*

Located at 136 S. 9th Street in
downtown Cambridge, Ohio

Wed-Sat 9 a.m. - 4 p.m.

Sunday Noon - 4 p.m.

General Admission \$5

Seniors & AAA members \$4

NCC Members and children under 12

FREE

