



Cambridge Crystal Ball

Published by the National Cambridge Collectors, Inc. as a resource which informs, invites and inspires people to encourage the continued preservation of the glass produced by the Cambridge Glass Company of Cambridge, Ohio for future generations.

Issue No. 511

ISSN 2474-5987

September 2017

From The Archives: Elm Tree Mine

By Mark Nye

It has long been known that during its early years the Cambridge Glass Company owned and operated the NearCut Coal Mine.. However, no company records available to researchers made mention of a second mine. In June 2016 this changed with the donation, to NCC, Inc, of a number of Cambridge Glass Company ledger books that at one time had been in the collection of the Degenhart Museum. Included in this donation was a ledger book whose first page had at its top the words “Inventory Cambridge Glass Co Elm Tree Mine” and a date of 1917. The ledger was in use through January 1923 when no more pages were available.

The ledger was by no means an inventory ledger. In a broad meaning of the word, it could be described as a “general” ledger as it recorded sales of the mine’s coal as well as general accounting information. This brief description of the ledger will make no attempt to fully describe its contents. It was not a payroll ledger as no actual wages are provided. What is recorded, among its sales, was sales of coal to employees of the mine. These were recorded in two places, under sales and then under “Payroll Accounts Receivable.”

It is from these two sections that an employee list was generated. No assumption regarding the total number employees at the mine can be made from this listing. There very well may have been others that did not purchase coal directly from the mine. In addition, employee names did not start to appear until 1919; hence there is no information regarding employees before 1919. While not factory employees, nonetheless these men were Cambridge Glass Company employees and

their names have been added to the list of company employees.

While not only supplying coal to the factory and selling it to employees, coal was also sold to the general public.

Both the Elm Tree Mine and the NearCut Mine were located East of Cambridge, several miles outside the village on the north side of what is now known as “Old US 40”. The location was in the vicinity of what is referred to by locals as “4 Mile Hill.” ■

What’s Inside

From The Archives: Elm Tree Mine	1
President's Message	3
Fall Membership and Educational Meeting . . .	4
Fall Membership Meeting Registration	5
July - A Busy Month at the Museum	6
Convention 2017: Scenes	8
Convention 2017: The Wilds Tour	10
Convention 2017: Display Cases	11
Convention 2017: Glass Animals Program. . .	12
Convention 2017: Show-n-Tell Program . . .	13
Convention 2017: Stemware Sightings.	14
Minutes of the 2017 Annual Meeting	16
eBay Report	18

National Cambridge Collectors, Inc.

PO Box 416 Cambridge, OH 43725-0416

Board of Directors

2018

Julie Buffenbarger Doug Ingraham David Ray

2019

Rick Jones Lindy Thaxton Lynn Welker

2020

Cindy Arent Larry Everett Sharon Miller

2021

Sandra Bridwell-Walker Ken Filippini Freeman Moore

Officers

President	Rick Jones
Vice-President	Doug Ingraham
Secretary	Sharon Miller
Treasurer	Sandra Bridwell-Walker
Sergeant-at-Arms	Larry Everett

Director of Strategic Planning	Ken Filippini
Director of Human Resources	David Ray
Chair, Endowment Committee	Doug Ingraham

ADDRESS CHANGES

Please send address changes to:
Membership - NCC
PO Box 416
Cambridge, OH 43725-0416
or by e-mail to:
membership@cambridgeglass.org

Vice President

Member Relations
Convention
Digital Media
Glass Dash
Glass Show
Study Groups
Webmaster

Member Services

Freeman Moore
Freeman Moore - Membership Database
Rick Jones - Convention Director
Alex Citron - Manager of Facebook Operations
Larry Everett & Frank Wollenhaupt
Sandra Bridwell-Walker
Jeannie Moore - Study Group Coordinator
David Adams

Development

Vice President

Campaigns

Events

Projects
Publicity

Julie Buffenbarger
Ken & Jane Filippini - Annual Fund Directors
Larry Everett - Director of the Heritage Society
Will & Bev Acord - Auction Managers
Lynn Welker - Auction Manager
Carl Beynon - Jeweler & Scotties Project Manager
Jonathan Fuhrman

Education

Vice President

Crystal Ball
Publications
Media Productions
Research
Programming

Larry Everett
Freeman Moore - Executive Editor
Mark Nye - Director of Publications
Dave Rankin - Director of Media Productions
Mark Nye - Archivist
Greg Vass - Director of Programming

Museum

Vice President

Public Operations

Facilities & Grounds
Collections
Merchandise Sales

NCC History
Community Relations

Cindy Arent
Sandra Bridwell-Walker - Docent
Julie Davey - Docent
Jessica King - Docent
Sandi Rohrbough - Docent
Betty Sivard - Docent
Kayla Wyers - Docent
Carl Beynon - Director of Facilities
Lynn Welker - Director of Collections
Lynn Welker - Gift Shop Manager
Cindy Arent - Gift Shop Manager
Mark Nye - Archivist
Cindy Arent

Administration

Vice President

Accounting & Finance
Information Technology

Doug Ingraham (acting)
Lisa Neilson - Office Manager
(vacant)



CONTACT US

136 South 9th Street
Phone: 740 432-4245
nccglass@yahoo.com



Rick Jones, President
e-mail: president@cambridgeglass.org
Sharon Miller, Secretary
e-mail: secretary@cambridgeglass.org

Heritage Society

Ensuring the preservation mission of the NCC through planned giving and estate bequests.

Members of The Heritage Society are those who have included the NCC in their wills or estate plans, thus providing the organization with a secure future.

The mission of The Heritage Society is to foster smart estate planning and to assure that NCC is not forgotten as an important beneficiary. Any pledge is meaningful and appreciated.

All Cambridge collectors - both current and future - will benefit from, and be grateful for your support.

Let us know how we can help with your future plans.

NCC Website: www.CambridgeGlass.org

Miami Valley Study Group Website: www.mvsg.org



PRESIDENT'S MESSAGE

We Went Wild at Convention

As I look at the benefits of being a member of National Cambridge Collectors, Inc. few rank as high as being able to attend and participate in our Annual Convention. Many, if not most, of my very best friends have been made by attending the Convention and I know I am not alone in that.

Until two years ago, I had never served as Convention Director. Having managed the last two, I have the utmost respect for all the Directors who came before me. It is a tremendous amount of work and requires the assistance of a lot of people. But boy is it worth it and tremendously gratifying.

In creating a Convention, you seek to achieve several goals:

- Make it fun
- Provide great opportunities for Fellowship, interaction and the chance to make new friends
- Deliver solid educational forums
- Make the Museum a central part of the weekend and theme accomplishment
- Provide outstanding glass buying opportunities

This past June's theme "Animal House" allowed us to deliver on all five of the goals above.

We also were able to include a non-glass event that dovetailed with our theme – the tour of The Wilds. We had 29 Conventioneers joining us Wednesday afternoon to tour this unique and riveting 10,000 acre animal preservation complex. You'll see a number of pictures from The Wilds in this issue, including our phenomenal tour guide, Sharon Miller.

The Wilds is not a zoo. It is a real life conservation area with particular focus on endangered species. It is remarkable how many unique animals we saw there that are on their way back thanks to the efforts of the staff of The Wilds.

Preservation and education are themes The Wilds and NCC have in common. I find our most involved members have those values at their core. That's why all 29 attendees found the tour profoundly affecting and an unexpectedly pleasing activity.

For the second consecutive year, we had an increase in attendance at Convention. I would like to thank each and

every one of you for attending. It was particularly pleasing to have 24 FIRST TIME ATTENDEES. We sincerely hope you all will join us again in 2018.

A number of regular attendees were unable to join us this year. Please know you were missed and we hope you can be back next year.

For those who have never been to a Convention, or haven't been in a long time, please start thinking now of joining us the fourth weekend in June in '18.

We have another fun theme planned – Games. An invitation is already out to a premier authority on Cambridge's Varsity Sport line as a keynote speaker. We are also looking at a program on bridge and other card set items ... which could expand to being about entertaining in the 20's, 30's and 40's.

For a social twist, we are looking at staging other games such as backgammon, euchre, hearts, bridge and many others. If you are an aficionado of any games, let us know. Maybe you can be the lead organizer of this activity. We might also have something cooked up that would involve a casino. Interested?

On a separate topic, some of you may have received a second mailing on the Annual Fund. We hope you will continue to support this important annual membership drive. Its success is fundamental to our club accomplishing our many goals.

To help organize these activities, your Board just approved the following slate of Vice Presidents for the 2017/2018 club year:

- Member Services: Freeman Moore
- Development: Julie Buffenbarger
- Education: Larry Everett
- Museum: Cindy Arent

Our club VP Doug Ingraham will remain as acting VP of Administration as we continue to seek a full time appointment.

I hope you are making plans to join us at the NCC Quarterly Meeting October 21st. You'll find information on the program and a registration form in this issue of the Crystal Ball.

Until the next time, all our best -

Rick Jones
president@cambridgeglass.org

Fall Membership Meeting & Educational Program: The Fall Colors Of Cambridge

by Greg Vass

It was just a few months ago that about 150 NCC members, friends, and guests, had a beastly good time amongst all the wild “Animal Farm” exhibits at the 2017 NCC Convention with much fellowship, learning, and glass to enjoy, and now it is time for a bit more subdued, but still stimulating event. As your list of possible consignments for the 2018 NCC Auction has already been submitted, make plans now to attend the Fall Membership Meeting & Educational Program. Fewer wild beasts to contend with, but still *another* opportunity to spend enjoyable quality time with your NCC Friends.

The Fall Membership Meeting & Educational Program will be held on Saturday, October 21, upstairs at Theo’s Restaurant, 632 Wheeling Avenue in downtown Cambridge, Ohio, and just a few blocks from the NCC Museum. Cocktail hour begins at 5:00 PM followed by a buffet dinner at 6:15 PM. If you are bringing glass for the program or Show and Tell, plan to arrive at Theo’s no later than 5:15 - 5:30. The menu for this year’s buffet includes: Carved Honey Baked Ham; Vegetable Lasagna; Lemon Pepper Chicken; Green Beans Almandine; Scalloped Potatoes; Brussel Sprouts; Family Style Salad; Rolls & Butter; Beverages; and Assorted Desserts.

The cost of the dinner is \$19.00 per person. The Membership Meeting and Educational Program will follow dinner as well as the Bring and Brag presentation hosted by Lynn Welker. The registration form is included on next page of this Crystal Ball and the deadline for receiving reservations is **Saturday, October 7, 2017.**

Several Fall Programs ago, we were able to explore the various shades of the color Blue produced by the Cambridge Glass Company. It was interesting to see this color, produced from the very early days of the company until very late in the 1950’s, realized in all its various hues.

The focus of this Educational Program will be to explore the **Fall Palette** of colors marketed by the Cambridge Glass Company during its production history. The colors and treatments will include: Amber, Madeira, Mocha, Golden Showers, Goldenrod, Gold Krystol, Topaz, and Mandarin Gold.

As with the Blues, several of these Fall colors are easily identified from the others by the shape or product line that it appears on. For instance, some of the items manufactured during the time period of Gold Krystol were not in production as late as the year 1949, when the similar shade of Mandarin Gold was brought out. Items in other colors - such as Topaz – are often a bit more slippery to identify, as the time of usage of that color is harder to narrow down. More than once, a Statuesque line item, usually a Crown Tuscan-stemmed cocktail, has been the subject of identity confusion when the bowl has been misidentified as Topaz or Gold Krystol, when it is likely correct as Mandarin Gold.

The various hues of Amber offer similar delights to the novice and even experienced collector, as Madeira and Mocha stimulate opportunities for debate on color identity of items in the Caprice line and certain figural flower frogs, to name a few.

Golden Showers and Goldenrod. Are they colors, or treatments - or both? This promises to be an opportunity to learn about some very unique and seldom seen items.

Friends of Cambridge will hear all about these wonderful color offerings from Lynn Welker - who would like for you to bring any unusual or unique items that would add to the Program display. Contact Lynn on 740-826-7414 if you have any questions about items that would be helpful in displaying the theme of this Program.

For those Friends of Cambridge arriving in Ohio early, there is plenty to do. Several quality antique shops and malls are located within an hour or so of Cambridge. It is Fall Harvest time, and local shops will be open and stocked with shopping opportunities. As the Program & Meeting are early this year, the weather will be milder and may offer the possibility of enjoying some good Ohio golf or camping time. The Dickens Victorian Village will be in the early stages of gearing up for their annual menu of activities.

We hope to see *you* - on October 21 !

Menu

Carved Honey Baked Ham;
 Baked Homemade Vegetable Lasagna;
 Lemon Pepper Chicken;
 Green Beans Almandine;
 Scalloped Potatoes;
 Brussel Sprouts;
 Family Style Salad;
 Rolls & Butter;
 Beverages; and
 Assorted Desserts.

The cost of the dinner is \$19.00 per person.



Can you identify these colors?



Registration Form for the Fall Membership Meeting and Educational Program

Meal tickets are \$19.00 per person, and must be ordered in advance. Send in your check with this form (make a copy if you don't want to cut up your Crystal Ball) or use the form on the NCC website.

NAME: _____

ADDRESS: _____

CITY: _____

STATE, ZIP _____

E-MAIL _____

Number of tickets for meal _____ x \$19.00 = _____

Number attending the meeting only (no meal) _____

2017 OCTOBER						
SUN	MON	TUE	WED	THUR	FRI	SAT
						1
8	9	10	11	12	13	14
15	16	17	18	19	20	21
22	23	24	25	26	27	28
29	30	31				

Make check payable to: NCC
 Mail to: NCC, PO Box 416, Cambridge, OH, 43725
Registration Deadline: Saturday October 7, 2017



July A Busy Month at the Museum!

By Cindy Arent

I reported during the annual meeting in June that one of the four museum HVAC roof units was not working and beyond repair. This was the last original unit since NCC purchased the property in the year 2000.

Now for the good news! The City of Cambridge has Downtown Revitalization Grant money available this year. I spoke with Kim Haught, Director of Economic & Community Development, to see if HVAC replacement would qualify for the grant money. In order to have the opportunity to participate the grant, I completed the grant paperwork and got multiple estimates to replace the HVAC unit. The grant was approved and will pay half of the final cost, saving our organization over \$4000. We are very fortunate to have such wonderful support from the City of Cambridge.

The Dodge Brothers Car Club arrived at the museum for a tour on July 21st. We greeted 39 participants from four states. Fourteen antique cars ranging in years from 1915 to 1933 filled the museum parking lot. Many thanks to NCC member Max Treier for keeping watch over the parking lot as our visitors toured the museum. NCC member Al Tuttle was part of the group, along with his grandson.

The Cambridge/Guernsey County Visitors & Convention Bureau (VCB) invited us to present our museum group tour options in Downtown Columbus to group tour companies and operators on August 3rd. The event was

hosted by Experience Columbus. We were excited to have the opportunity to reach so many motorcoach companies from Ohio, Michigan, New Jersey, Indiana, Pennsylvania, West Virginia and Ontario, Canada. Lindy Thaxton and I traveled to Columbus to represent the National Museum of Cambridge Glass. Other area attractions attending were; Dickens Victorian Village, The Living Word, Guernsey County History Museum and Cambridge Main Street. Our presentation was very well received and several contacts were made. The following Saturday, one of the tour operators from New Kensington, PA even stopped at the museum to do a site inspection on her way home. We gave her a “walk through” and additional museum information. She commented about how well maintained the museum was and thought her company would plan a visit in 2018. We’ve also had interest from the New Jersey tour company and another site inspection is scheduled for September 22nd by Jan’s Fans through the Cambridge/Guernsey County VCB.

It’s hard to believe, but it’s time to start making Cambridge Christmas ornaments! If you have any stemware with a broken foot or small nick in the rim that you would be willing to donate to the project, please let us know. The supplies for this project are all donated by NCC members. Watch the museum Facebook page for photos of ornaments for sale. We shipped several ornaments in 2016!

Thank you all for your generous donations and we hope to see you at the museum!



NCC member Max Treier (left) kept a watchful eye on the vintage cars in the parking lot while the tour was going on inside the museum. On the right is museum neighbor, Eli Evans. Eli manages the large brick apartment building at the edge of the parking lot.



The Cambridge/Guernsey County team was ready to present their programs for each attraction.

Shown left to right are: Heath Dawson (The Living Word), Dixie Lacy (Cambridge/Guernsey County VCB), Dee Carter (The Living Word), Bev Kerr (Dickens Victorian Village), Lindy Thaxton (National Museum of Cambridge Glass), Donna Hill (Cambridge Main Street), Judy Clay (Guernsey County History Museum) and Cindy Arent (National Museum of Cambridge Glass).

As a motorcoach leaves the museum, volunteers line up on the sidewalk to bid them farewell. The group is waving to an Eastern Star group from the Proctorville, Ohio area. Shown left to right are: Betty Sivard, Rich Bennett, Diana McMahon, Sarah Carpenter, Sandi Rohrbough, Reggie Gerko, Cindy Arent and Lindy Thaxton.



The Dragon etching on the bowl was also introduced in the trade journals in 1922. The original etching plate is on display at the National Museum of Cambridge Glass.



Crockery and Glass Journal, Jan 19, 1922

Scenes From A Great 2017 Convention



Members enjoying conversation before dinner.



A few furry friends made their appearance.



Jane Filippini, 2017 Phyllis Smith award winner with David Ray.

Several members were "hunting" for adventure.



NCC archivist shared some insight about Cambridge Glass Company history.

Scenes From A Great 2017 Convention - continued



Some of the members participating in the "First Timer's" orientation session. Our objective is to make everything go smoothly so they become "second timers".

Lynn, Ginny and Mark Cantee with cards 1, 2, 3; allowing them to be first to enter the Glass Show.



Comments

We loved our first convention! We were made to feel so welcome! I was so impressed with how friendly and helpful everyone was! I loved having both the glass show and the glass dash to add to my collection as well as special convention pieces! We also came away more educated about pieces and the factory. The educational sessions were awesome! We can't wait until next year!

As a first time attendee, I thought this convention was incredible. I had underestimated what the glass show and sale would be. I figured it would be a glass show then a separate glass sale. When I walked into the Pritchard center, I was stunned. The amount of beauty was just so overwhelming, then to find out that everything was for sale! I grew up going to Cambridge, OH because my Grandmother grew up there and was an avid Cambridge collector. I began my collection in my very early teenage years. This is the first time that we were able to go to the convention, and I definitely plan on returning. The Glass dash was also amazing, while we did not arrive right away, we certainly got some great deals. I always love going to Cambridge and learning as much as I can about the glass that I do adore, and this was such fun, being surrounded by people with the same passion.

The convention exceeded all of our expectations. Our first sight of all the glass in the convention hall was awesome. It was a pleasure to meet and talk with all the folks and get some great deals on glass as well.



David Rankin handles the camera while Larry Everett gets the microphone to attendees during the recording of the one the educational programs.

Some Highlights From The Wilds Tour



Nearly 30 members took part in a very special opportunity as part of this year's NCC Convention Celebration – ANIMAL HOUSE. Convention attendees participated in a custom tour of the **Columbus Zoo's The Wilds**, located just 21 miles from our National Museum of Cambridge Glass.



The tour of The Wilds was led by our very own Friend of Cambridge, Sharon Miller, who is also an NCC Board Member (and current Secretary). Sharon has been working part-time at The Wilds, which is an over 9,000 acre Conservancy.



Some of the wildlife managed to get close to the tour bus while others kept their distance.

Thanks to Bev Acord, Rick Jones, Roger Loucks, and Jack Thompson for sharing pictures of this adventure.



A few of the NCC members on the tour.



Animals Across the Glass World

A collection of animals by Dolores & Grant Giesler and Sharon Miller



Display cases at the Pritchard Laughlin Civic Center

Elaine Thompson helping at the registration table, which was in front of a display of animals by Wendy & David Loss.



A wonderful display of Cambridge Dolphins by Zak McCamey.



Lynn Welker gave the Thursday keynote presentation "Cambridge Animals."
How many animals do you have in your collection?



This is only a sampling from the program.
View the video on the website for all the detail.

Show-n-Tell, Bring-n-Brag, Glass ID

Whatever you call the program, there was an impressive variety of glass displayed by members at the Friday night program conducted by Lynn Welker. There were a few non-Cambridge items that members sought glass identification.

Frank Wollenhaupt's "Only Questions - No Answers" article in the August 2017 Crystal Ball was prompted by a paperweight discussed in the program.

Enjoy this collection of photos, then watch the video on the website and listen to Lynn's commentary..



Stemware Sightings!





- 3016 crystal goblet etched Lily of the Valley
- 3025 footed tumbler, crystal bowl, Amber foot, etched #405
- 3060 Light Emerald goblet etched #704
- 3077 Amethyst goblet
- 3077 Light Emerald wine etched Hunt Scene
- 3106 crystal goblet etched Rose Point
- 3114 crystal goblet with gold bands
- 3115 goblet, crystal bowl, Ebony stem & foot, etched Rosalie
- 3120 crystal goblet engraved Berkeley (#851)
- 3121 crystal footed tumbler etched Rose Point
- 3121 goblet, Gold Krystol bowl, crystem stem, etched Wildflower
- 3130 crystal goblet engraved Ravenna (#507)
- 3130 Gold Krystol goblet etched Gloria
- 3130 Moonlight goblet etched Apple Blossom
- 3130 Moonlight wine Tumbler etched Rose Point
- 3500 crystal footed tumbler etched Rose Point
- 4000/1 crystal goblet (blown) Cascade
- 7966 crystal goblet engraved Rondo
- 7966 crystal goblet engraved Wedding Rings
- Stradivari crystal goblet
- Tumbler etched Rose Point

Some members brought their special stem to use at the Friday night banquet. Now that you've seen the assortment of stemware, can you match the description to the picture?

- 1066 Forest Green goblet
- 1402 Carmen goblet
- 1402 crystal goblet, D1007/8
- 1402 Forest Green goblet
- 1402/100 crystal goblet with gold band, etched Minerva
- 1402/100 Royal Blue goblet
- 1936 crystal footed tumbler etched Firenze
- 1936 crystal goblet with gold band
- 3011/2 crystal table goblet with monogram



Some Non-Cambridge Stems were spotted:

Those delightful cats are from the Libbey Glass "Silhouette" line from 1933. The pieces in this picture are "cat" stem goblets in frost, clear, and black.

The line included kangaroo, polar bear, squirrel, rabbit, greyhound, monkey, camel, giraffe and elephant. (Thanks to Lyle Stemen for sharing this information.)

National Cambridge Collectors, Inc.

Minutes of the June 23, 2017 Annual Meeting

President David Ray called the Annual Meeting to order at 7:10 pm on Friday, June 23, 2017. David began the meeting by asking for a moment of silence for those members who have passed this year. We remembered Don Carson, Ernie Gary, William Orme, Patty Rutledge, Cindy Ulrich and Kent Washburn.

David gave a thank you to the board members that have worked with him these several years. President Ray asked if there were any additions or corrections to the March Membership minutes as published in the May issue of the Crystal Ball. There being none a motion was made by Rick Jones and seconded by Mark Nye to approve the minutes as published. The motion passed.

The Treasurer's report was given by Millie Loucks. Millie said that 2016 was a very good year for NCC. The mortgage for the newly acquired property was paid down with the \$60,000 received from the Patty Rutledge estate. The current balance of the mortgage is \$34,700. In March, the board authorized a \$25,000 transfer to the Endowment Fund. The balance in early June for the Endowment to \$443,000. The profit from the annual auction was \$6,400 which was down from the previous year. The committee felt that the quality of the glass was down this year. Millie thanked the Auction Committee of Will and Bev Acord and Lynn Welker for all their hard work. Millie also thanked the membership for the opportunity to serve as Treasurer for the last four years.

The Vice President reports began with Cindy Arent. Cindy thanked the membership for their support of the museum with glass donations and other volunteer activities. Cindy reported that we have a new lighting consultant, Jay Patterson. Jay is the son of longtime members Everett and Shirley Patterson. Jay has connections with AEP (American Electric Power) and has been very helpful in converting our lighting from halogen to LED both on the inside and outside the museum. Jay has filed the necessary paperwork with AEP to help the museum receive savings with the electric use. There are currently four units on the roof for heating and air conditioning. One of the original units has quit working and must be replaced. Cindy has contacted the city of Cambridge to seek grant money

to help pay for the unit replacement. The money is available to assist in paying for the unit as soon as the paperwork is completed. NCC will be reimbursed for ½ of the replacement cost. Thanks to the Visitors and Convention Bureau in Guernsey County, the museum has been able to distribute rack cards through the CTM into Amish country for the first time. Cindy announced that the museum has received a 5 Star rating on Trip Advisor. It demonstrates how important social media has become in promoting the museum. Postings on Facebook of museum gift shop glass and Christmas ornaments have resulted in items being shipped throughout the country. The museum made \$3,000 in ornament sales this year. Holiday rack cards are in the process of being printed. Finally, Cindy thanked the museum volunteers and the docents for their dedication.

Prior to Rick's Member Services report, President Ray thanked Rick Jones for planning and executing an outstanding 2017 convention. Rick wanted to thank all the volunteers who work to promote the organization in a variety of roles. Rick said that the organization has moved from being a club to a preservation organization and acknowledged Mike Strebler's help with the conversion to an annual fund-raising event. Rick began by announcing the Annual Fund generated \$45,000 last year. This year the Annual Fund has raised \$36,000 to date which is 82% of the budgeted amount. The Membership Team of Freeman Moore, Ken and Jane Filippini and David Ray have been responsible for getting out the letters and communications to the membership about the fund. Rick also wanted to thank all those volunteers who have made this convention possible. Over 20 volunteers served in various roles. A big thank you also to Larry Everett and Frank Wollenhaupt for managing the Glass Dash again this year. There will be 13 vendors set up on Saturday morning, June 24th. Non-NCC members who attend the Dash will be able to gain admittance to the Glass Show at the Pritchard-Laughlin for \$1.00 with a voucher. Free admittance on Saturday has been extended to the Western Reserve members and the Fostoria Glass Collectors who visited our museum during their convention. Fostoria sent a very nice donation to NCC. Rick said that the Web site continues to be upgraded to stay current and that more and more, electronic communication helps connect the

membership. Rick said that any new volunteers for the 2018 convention would be welcome. There are many roles to fill.

Larry Everett, Vice President of Education reported that both Rosepoint books were out of print. Some minor changes were made to the new Rose Point book, therefore it will be a 2nd edition printing of 125. Thanks to Mark Nye who paid for printing 25 of the old Rose Point book. Thanks to Greg Vass who personally transported the books across the country to save NCC shipping costs. Larry introduced Freeman Moore to the first-time conventioners. Freeman can always use copy for the Crystal Ball. Thanks also to David Rankin for the many, many hours he spends taking pictures for the auction and for the website. Larry took a quick survey to determine whether members preferred a paper copy of the reference books or an electronic version. The results were mixed. Larry announced that Greg Vass who plans our Fall Quarterly meeting has selected "Fall Colors" as the topic for the Fall Membership Meeting. It was suggested that members begin to think about what glass they could contribute to the program. The date will be October 21, 2017 at Theo's upstairs.

Julie Buffenbarger, Vice President of Development announced that there will be a couple of fundraising items that will be available later in the year. The first will be embroidered Cambridge logo wear that is quite nice, compliments of Stu Sandler. Items such as jackets, polos, hats, and so forth will be available. The second item will be a surprise to the membership. NCC has received a mould donation and the item will be introduced in the Crystal Ball soon. Julie hopes that everyone will want at least one of this item.

Doug Ingraham, Vice President of Administration announced that NCC will be changing the format of the donation letter in keeping with IRS regulations. NCC can no longer put values on the glass that is donated to the organization. It is the responsibility of the person giving the donation to declare the value. The donor may obtain an outside appraisal if they wish. Doug has researched the IRS code because of a member in Texas that wishes to donate a sizable collection to NCC.

Doug gave an Endowment report. In June 2016, the Endowment Fund with Merrill Lynch was \$260,000. With \$100,000 in cash that was freed by an alternate loan plan for the newly acquired property the total

increased to \$360,000. Over the last year, \$50,000 was transferred from the operating fund to the Endowment. As of today, June 23, 2017, the total Endowment Fund is at \$444,500. Doug encouraged members to become members of the Heritage Society for the purpose of remembering NCC in their will. Details can be found on the Website.

Under Old Business, Frank Wollenhaupt asked for an update on the Randy and Debbie Coe book that they were preparing for publication two years ago. David reported that a conversation with the Coe's, they indicated that Schiffler Publishing was no longer interested in publishing collector's books. No more information is currently available about the status of the book.

There being no further business, Rick Jones made a motion to adjourn the meeting. Mark Nye seconded the motion. The motion passed.

Respectfully submitted,

Sharon Miller, secretary

Immediately following the meeting, an auction was held to benefit the Endowment. Kathie Young had made a generous offer to do a portrait of a member's pet with the auction price to be deposited in the Endowment Fund. Bill and Suzanne Chamberlain were the winning bidders at \$260. They then doubled their donation to \$520 in honor of their two pets. NCC thanks them for their generosity.

Welcome to the eBay Report. This column features Cambridge glass items that sold on eBay circa late July through early August, 2017. Selling prices have been rounded to the nearest dollar. If a color is not mentioned, assume that the item or portion of it being discussed is crystal.

Statuesque (Nude Stem) Line



A 7-3/4 inch claret with Carmen bowl sold on Buy It Now for \$70, while a cocktail with Gold Krystal bowl and vertical optic sold for \$55 on Buy It Now. An all-crystal ivy ball with a nick on the top rim sold for \$80.



Last month I reported on a flared comport in all-crystal with a polished cutting that sold for \$246. A similar item sold recently for \$183.

A one ounce true cordial (think: cupped bowl) in all crystal sold for a surprising \$204. Then again, connoisseurs know that all-crystal nude stems are fairly scarce, and so are cordials.



Last month I reported on a blown comport with amber bowl and no lid. This month one with a cover surfaced. Though all crystal (see my comment above), it garnered \$405.



A bud vase with Royal Blue top sold for \$416.

Etched Tableware and Stemware



A seller offered 3 #3121 low stemmed brandies etched Rose Point at \$100 each, and sold all 3. A pair of #3075 cordials in Light Emerald Green with Hunt etch sold for \$133.

An incognito listing for a "Duncan & Miller First Love Square Covered Cheese Butter Cranberry Dish" turned out to be the #3500/139 covered

honey dish, etched Rose Point. It sold for \$29, quite a bargain for a piece that regularly commands about \$150 or more. Then the piece was relisted, whereupon "the Auction was Ended Because the Item is No Longer Available." Hmmm....

Another incognito listing for an "Antique Rare XL Etched Vaseline Glass Barrel Bodied Liquor Dispenser/Decanter" turned out to be a samovar in Topaz with #695 etching. Despite being listed under the "Antiques - Decorative Arts - Glass - Decanters" category, as well as "Antiques - Periods & Styles - Victorian," it sold for \$637. This price puzzled me, as the identical item has sold for 1/2 to 1/3 of this price when properly listed under the Cambridge category. Here's a comparison:



The same-shaped samovar in Cobalt I color, same etching, brought \$349. Even after allowing for the difference in color desirability, that's a notable gap.



A #1561 86 ounce pitcher etched Rose Point brought \$225. This shape is hard to find etched Rose Point. Though it is depicted in the catalog reprint on page 77 of the first edition Rose Point book with an ice lip, this pitcher had a plain lip.



An amber #1228 "pillow" vase etched Diane brought \$362.

A #3500/41 10-1/2 inch urn with lid, etched Rose Point, sold for the opening bid of \$400. This is version 2 which smoothed out the Gadroon ridges.



Gold, Silver and Enamel Decorations

A pair of single keyhole #646 candle holders with the notch on the socket for the locking bobeches (not

included) in Ebony with gold encrusted Chantilly etching were sleeping in the Elegant-Unknown category. Despite multiple bidders trying for them, they sold for only \$57, quite a deal.



a copy of “*The Crystal Lady*,” Cambridge’s 16mm promotional film showing how some of their glass was made. I had an opportunity to see this once, and it was fascinating. It sold for only \$160. I thought that was a steal.



A lamp made from a 12 inch vase in Ebony etched and gold encrusted Peacock etching sold for only \$174. Despite browsing the 1921 catalog twice, I could not find the shape number for the vase from which this was made.



A #1567 5-light candelabra (consisting of the #1443 3-lite candelabrum, #1432 3-candle arm, and 5 bobeches with prisms) sold for \$175 on a Buy It Now.



An ebony #1621 10 inch footed urn vase with gold encrusted Wildflower etching sold for \$621. Nice!

A #1242 10-3/4 inch vase in Carmen with gold encrusted Portia etch was this month’s superstar, selling for a lofty \$1,925.



A Tally Ho footed punch bowl in Carmen sold for \$375.

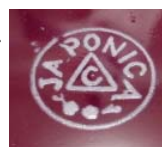


A pair of #69 Moonlight Blue



Caprice double candelabra with the shell style “feet” and shell shaped bobeches sold for \$750. Just finding those bobeches is a challenge, and the price properly reflected that.

I seldom report on items that did not sell, but feel compelled to mention a #3400/102 5-1/2 inch vase in Carmen with Japonica decoration and stamp on the bottom, which failed to garner the opening bid of \$1,000.



Follow up Notes on Previous Months’ eBay Reports

Member Jack Thompson advises me that the all-dark green Statuesque comport mentioned in the August report was not late Forest Green, but late Emerald Green. My bad.

Another member who wishes to remain nameless shared examples of keyword searches which have netted him or her some nice fishing results on eBay – most recently, a crystal Turtle flower frog. Do you have any tips or techniques to share?

Miscellaneous

Did you need to expand your crystal Near Cut Wild Rose punch set? Apparently someone did, because a set of THIRTY FIVE punch cups sold for only \$75.



If you see any interesting Cambridge glass on eBay that you think I should be watching or reporting on, or if you have any other input, feel free to contact me at LAGlass@pacbell.net.

Last month I created an all-new category of “Paperweights” for my column, and talked about three. This month I am *not* going to create a new category for “Cambridge glass films.” An eBay seller was lucky enough to find and offer for sale a film can containing

Until next month, happy Cambridge hunting!

FRED AND NITA ELDRIDGE

40+ YEAR GLASS COLLECTION – ALL FOR SALE

Fred Eldridge passed away on March 14, 2017 and Nita has decided it's time for someone else to enjoy their collection, which includes over 4,000 individual pieces.

The following glass companies are well represented:

Anchor-Hocking
Cambridge
Duncan Miller
Fostoria
Heisey
Imperial
New Martinsville
Old Morgantown
Westmoreland



Specific collections include:

Heisey Banded Flute (#150) - approx. 325 pieces
Heisey Tudor (#411) – approx. 200 pieces
Fostoria Mulberry – approx. 275 pieces
Green Cameo (Ballerina/Dancing Girl), approx. 175 pcs
Clear Block Optic – approx. 120 pieces



Types of items they loved to find:

Candlesticks - over 900 pieces!
Cambridge Arms – approx. 100 pieces
Baskets and Swans – approx. 230 pieces
Individual Creamers and Sugars – approx. 240 sets
Flower Lites – approx. 50 items
Punch Cups – approx. 100 items

Itemized lists are available. Please call Fred and Nita's daughter Elaine Hunthrop at 501-352-2127 or email eandtss396fans@sbcglobal.net

Please note: We prefer to sell groups of items together, (not individual pieces) and will not pack or ship for buyers.



Huge Cambridge Glass Collection

36 Nudes and Approximately **100 pieces of Rose Point**
200+ Pieces of Beautiful Cambridge Glassware & etc.

Cambridge Glass Nudes:

8 Brandies: Mocha, Pink, Carmen, etc.
15 Cocktails: Amethyst w/ Satin stem and foot; Pistachio; Ebony; Experimental; Crown Tuscan Stem; Smoke; etc.
4 Clarets: Heatherbloom, Carmen, Forest Green, and Royal Blue
1 Champagne: Carmen
Pair of Crown Tuscan Nude Candlesticks
1 Ivy Ball: Carmen
1 Table Goblet: Royal Blue
2 Cupped Candy: Carmen, Royal Blue
1 Flared Candy: Royal Blue
1 (All Mandarin Gold) Shell Comport (Hard to Find)

Additional Cambridge Glass:

Windsor Blue 6" Footed Shell Candy
Several Pieces of Rubina: 1# Honeycomb Footed Covered Candy Jar (Excellent Color); round bowl, candlesticks; etc.
Crystal Dresden Lady ~ Unusual
Draped Ladies in Moonlight Blue and Crystal
Unusual 2-Kid in Crystal
Bashful Charlotte in Crystal (Large)
2 Prism Signs: Ebony with gold letters and Crystal (Hard to Find)
3-Piece Helio Console Set
Ivory Pieces including Sweet Pea Vase
Several 8 1/2" Swans in color including Crown Tuscan with Charleton decoration (Very Nice)
Perfume with Dauber
Flying Lady Bowl with Charleton decoration on Crown Tuscan, in excellent condition
Royal Blue Wine with Gold Design
Carmen Goblet with Gold Design
Carmen Champagne with Gold Design
2 Sunset Tumblers
Cordial Decanter in Amethyst with 6 Mushroom-Shaped Cordials
EBON Cambridge Square Vase 6"
Pair of Mt. Vernon Crystal 2-light Candlesticks
Mt. Vernon Crystal Cigarette Lighter
2 4-Footed Nut Cups
Several Pressed Rose Point Tumblers in Color
Near-Cut Pieces
(All) Amber Cocktail with Gold Hunt Scene
8 (All) Different Colors of 1oz. Little Joes

Preview of the auction on Friday, Oct. 20
from 10 A.M. to 4 P.M.

Auction on Saturday, Oct 21 at 9:00 A.M.
And it's an indoor auction.

Auctioneer: Dale Webster
email: secrestseniorcenter@firewireinternet.com

Robert T. Secrest Senior Center,
201 High Street,
Senecaville, OH 43780.

about seven miles south of Cambridge
just off of I-77

Approximately 100 pieces of etched Rose Point:

Barrel and Straight Tumblers; Cruet; Parfait; Bell; Crimped Bowl; Several Candlesticks; 10 Cups & Saucers; 13" Round Footed Martha Rose Point Cake Plate; many other plates; Covered Candy; Relish and more pieces to be unpacked.

Other items include Fenton Glass, Pottery from Zanesville and Cambridge, Cream and Sugar: possibly R.S. Prussia.
And more!

NCC Events

**2017 Fall Meeting
October 21, 2017**

**2018 NCC Auction
Saturday March 3, 2018**

Recent Finds



Two W102 2 ¼" Individual Ash trays with place-card holder and W123 3" Urn.. The set above has gold trim D/1018.

Would these have been sold as a "smoker's set?"



September 16-17, 2017

Depression Glass Club of Rochester NY
2017 Vintage Glass and Collectibles Show
657 East Avenue
Rochester, NY 14607
dgclub@rochester.rr.com

Glass Shows

September 30 - October 1, 2017

Depression Era Glass Society of Wisconsin
40th Annual Show & Sale
Knights of Columbus Hall, 1800 South 92nd Street
West Allis, WI 53214
mmbhouck@yahoo.com

September 30 - October 1, 2017

Front Range Glass Show & Sale
The Ranch Event Center Complex McKee Building
5280 Arena Circle
Loveland, CO 80538
<http://Frontrangeglassshow.com>
mauthe@netins.net

October 20-21, 2017

Valley Glasshoppers Fall Show & Sale
1309 Openquon Ave
Winchester, VA 22601
<http://www.valleyglasshoppers.org>

October 21-22, 2017

Jacksonville Antique and Depression Glass Show and Sale
Fraternal Order of Police Building
5530 Beach Blvd.
Jacksonville FL 32207
<http://www.depressionglassclubjax.com/>
kwpewp@aol.com

November 4-5, 2017

Michigan Depression Glass Society
45th Annual Depression Glass Show & Sale
15801 Michigan Avenue
Dearborn, MI
<http://www.michigandepressionglass.com/>
michigandepglass@gmail.com

January 27-28, 2018

Sanlando Depression Glass Show & Sale
Sanford Civic Center / 401 E. Seminole Blvd.
Sanford, FL. 32771
<http://sanlandodepressionglassshow.com/>
contact@sanlandoshow.com

February 3-4, 2018

South Florida Depression Glass Club
Vintage Glass, Pottery, Dinnerware Show & Sale
Emma Lou Civic Center / 1801 NE 6th Street
Pompano Beach, FL 33060
<http://www.sfdgc.com>

DEALER DIRECTORY

Dealer Directory - \$24 for 12-months, size limited by box (see below). Includes listing on NCC website.


Advertising Rates:

1/8 page \$15 1/4 page \$20
1/2 page \$30 Full page \$50

Electronic submissions should be emailed to:

editor@cambridgeglass.org

Use Word. Mailed submissions and all payments should go to PO Box 416, Cambridge, OH 43725. Deadline is 10th of preceding month. Ads must be paid in advance. Show listings are FREE; send info to PO Box or e-mail address 60 days before event.



Connecting Buyers & Sellers!
Tell us what you are looking for and we help find it.
CAMBRIDGE GLASS.US
P. Snyder 740-601-6018
E-Mail and Find Your Glass!
psnyder@cambridgeglass.us
www.cambridgeglass.us

E-Blast
When you are searching for Cambridge glass, email your request and it is emailed to all members and dealers.
P. Snyder, 1500 Edgewood Dr., Circleville, Ohio 43113

PATTON HOUSE ANTIQUES
Specializing in Glass
Heisey • Cambridge • Fostoria • Duncan
Factory Antique Mall
Verona, VA off I-81. Exit 227
The Daniels, Box 547 Louisa, VA 23093
(540) 967-1181

Cheshire Cat Antiques
Specializing in elegant depression to mid-century era glass and vintage kitchen glass.
Pull up a Mouse! Shop 24 hrs a day at cheshirecatantiques.com



Francee Boches > 305-884-0335
fboches@cheshirecatantiques.com

Cherished Collectibles
Shopping 24 hours in our online store
Glassware, Figurines, Collectors' Plates
www.cherishedcollectibles.com
Elegant and Depression Era Glass

Heirloom Glass Antiques & Gifts
Large Selection Of Cambridge
13411 Columbia Hwy.
Lynnville, TN 38472
www.heirloomglass.net 931-446-5492
juanita@heirloomglass.net

Edward Sawicki
Memories Antiques
"Glass is our Passion"
Candlesticks and stemware our Specialty."
PO Box 153 646-522-1506
Dunnellen, NJ 08812 ejsawicki@optonline.net

CRYSTAL LADY
1817 Vinton St. Omaha, NE 68108
Bill, Joann and Marcie Hagerty
402-699-0422
Specializing in Elegant Glass & Collectibles
www.crystalladyantiques.com


Glen & Carolyn Robinson
White Rose Antiques
Specializing in Depression Era Glassware
2454 McFarland Road
York, SC 29745
803-684-5685
gandcrobinson@aol.com
whiteroseglassware.com

CRYSTALLINE COLORS
Cambridge • Fostoria • Elegant Glass
Penny Court Mall, Cambridge - 2 booths
Medina Antique Mall
Medina, OH (I-71, exit 218)
Lynne R. Franks 216-661-7382

GLASS FROM THE PAST
Maureen Gillis

www.glassfromthepast1.com
email: maureen@glassfromthepast1.com

Cambridge Nudes - Dave Small
[HTTP://CambridgeNudes.com](http://CambridgeNudes.com)
3011 Cambridge Statuesque
Buy, Sell, Trade
davesmall@mac.com
281-376-3686



TWEAK COLLECTIBLES
Specializing in Elegant Glass
BUY & SELL
WANTED: CAMBRIDGE TURKEYS
417-742-3653
btummons@aol.com

Virtualattic At The Glass Chalet
Specializing in
Elegant Depression Era Glass
Sandra L. Bridwell-Walker
PO Box 726
Newcomerstown OH 43832-0726
740-492-5022 (H) 817-559-0328 (C)
virtualattic@sbcglobal.net theglasschalet@sbcglobal.net

Max Miller
Elegant American Glassware
www.maxmillerantiques.com
The Market Place
10910 Katy Freeway. 713-410-4780
Houston TX 77043 mmxglass@aol.com

Ohio Valley Antique Mall
7285 Dixie Highway (Route 4)
Fairfield, OH 45014
Cincinnati's Largest Multi-Dealer Antique Mall
Hours: DAILY 9:00 a.m. - 9:00 p.m.
513-874-7855
www.ohiovalleyantiquemall.com
cfaxon@ohiovalleyantiques.com

Be sure to tell dealers that you saw their ad here.

ISAACS ANTIQUES
(740) 826-4015
located in
Penny Court Mall
637 Wheeling Ave
Cambridge, OH

BAKER FAMILY MUSEUM
805 CUMBERLAND ST.
CALDWELL, OHIO 43724
740-732-6410
bakermuseumnellbaker@msn.com
Wed & Thurs 9-4; Fri - Sat 9-5

MARGARET LANE ANTIQUES
2 E. Main St. New Concord, OH 43762
Lynn Welker (740) 826-7414
Cambridge Glass Matching Service
Hours: Mon-Fri 10-12 AM, 1-5 PM
or by appointment

Our House Antiques
Linda and David Adams
Las Vegas, NV
1-800-357-7169
www.OurHouseAntiques.com
email: David@OurHouseAntiques.com




National Cambridge Collectors, Inc.
PO Box 416
Cambridge OH 43725
email: editor@cambridgeglass.org
website: www.cambridgeglass.org



Friends of Cambridge – Annual Fund

NCC exists through member giving using an Annual Fund system to raise operating funds and to ensure the preservation of Cambridge glass for future enthusiasts. The Annual Fund uses a common member "renewal" date and NCC sends out Annual Fund materials to everyone once a year. There are no monthly reminders or monthly renewal dates. The Annual Fund is NCC's primary means of support and all Annual Fund gift recognition levels are per household and include membership for all adults within the household. Additionally, each household will receive a subscription to the Crystal Ball newsletter, unlimited admissions to the museum, and rights to vote in elections for the Board of Directors. Multiple households at the same address are welcomed. NCC is a 501C(3) organization and Annual Fund gifts are allowed as a tax deduction under Section 170 of the Internal Revenue Code.

Levels of Membership

Thank you

Patron	\$35
Benefactor - Century	\$100
Benefactor - Mardi Gras	\$200
Benefactor - Japonica	\$500
President's Circle	\$1,000

President's Circle includes Convention registration for two members in the household and one copy of any new NCC publications.

The National Museum of Cambridge Glass

Located at 136 S. 9th Street
in downtown Cambridge

