



Cambridge Crystal Ball

Published by the National Cambridge Collectors, Inc. as a resource which informs, invites and inspires people to encourage the continued preservation of the glass produced by the Cambridge Glass Company of Cambridge, Ohio for future generations.

Issue No. 562

ISSN 2474-5987

October 2022

Arcadia Design Patents

UNITED STATES PATENT OFFICE

130,228

DESIGN FOR A BOWL OR SIMILAR ARTICLE

Will Cameron McCartney, Cambridge, Ohio

Application August 26, 1941, Serial No. 103,020

Term of patent 14 years

To all whom it may concern:

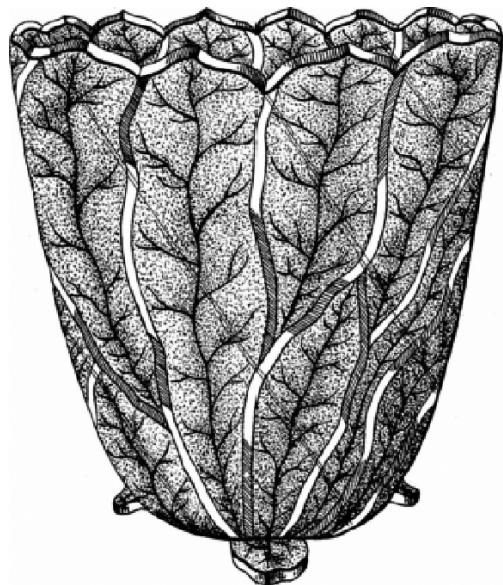
Be it known that I, Will Cameron McCartney, a citizen of the United States of America and resident of Cambridge, county of Guernsey, and State of Ohio, have invented a new, original, and ornamental Design for a Bowl or Similar Article, of which the following is a specification reference being had to the accompanying

drawing, forming part thereof, in which the single figure is a perspective view of a bowl or similar article, showing my new design.

I claim:

The ornamental design for a bowl or similar article, substantially as shown.

WILL CAMERON McCARTNEY.



See also:

No. 130,229 Arcadia Low Comport

No. 130,230 Arcadia Stem Line

No. 130,231 Arcadia Plate

What's Inside

Arcadia Design Patents.....	1
President's Message	3
The Museum's Time to Shine: Snazzy Award....	4
Paper or email?	7
Zoom & Tell: Jade and Pomona Green.....	8
Membership Corner	9
New Members.....	9
Volunteer Opportunity.....	9
eBay Report	10
NCC Events	14

National Cambridge Collectors, Inc.

PO Box 416 Cambridge, OH 43725-0416

Board of Directors

	2023	
Nancy Misel	Lindy Thaxton	Lynn Welker
	2024	
Cindy Arent	Larry Everett	Mike Strebler
	2025	
Ken Filippini	Freeman Moore	Christine Smith
	2026	
Julie Buffenbarger	David Rankin	Frank Wollenhaupt

Officers

President	Freeman Moore
Vice-President	Ken Filippini
Secretary	Christine Smith
Treasurer	Mike Strebler
Sergeant-at-Arms	Larry Everett

Committees

Endowment	Membership
Finance	Technical Decision
Property	Digital Strategy
Strategic Planning	Digital Preservation

Member Services

Vice President

Member Relations
Convention
Member Social Media
Glass Dash
Glass Show
Study Groups
Webmaster

Freeman Moore
Freeman Moore, Membership Database (open)
David Ray
Larry Everett & Frank Wollenhaupt
David Ray, Mike Strebler, Jack Thompson
Jeannie Moore, Study Group Coordinator
David Adams

Development

Vice President

Campaigns

Events

Projects
Publicity

Julie Buffenbarger
Ken & Jane Filippini, Annual Fund Directors
Larry Everett, Director of the Heritage Society
Bev & Will Acord,
Lynn Welker, Auction Managers
Susan Everett & Frank Wollenhaupt, Jewelry
Convention: Jonathan Fuhrman

Education

Vice President

Crystal Ball
Digital Archivist
Programs
Publications
Media Productions
Research

Jack Thompson
Freeman Moore, Editor
Dave Rankin
(open)
Larry Everett, Director of Publications
Dave Rankin, Director of Media Productions
Dave Rankin, Director

Museum

Vice President

Public Operations
Facilities & Grounds

Inventory Management
Collections
Museum Gift Shop

Archivist
Museum Social Media
Community Relations

Cindy Arent
Lindy Thaxton, Director of Public Operations
Cindy Arent,
Joe Miller,
Lindy Thaxton
Lindy Thaxton, Director of Inventory Management
Lynn Welker, Director of Collections
Cindy Arent, Gift Shop Manager
Lynn Welker, Gift Shop Manager
Mark Nye, Director of Archives
Cindy Arent, Director
Cindy Arent

Administration

Vice President

Accounting & Finance

Larry Everett
Lisa Neilson, Office Manager

MEMBERSHIP QUESTIONS?

Please send address changes to:
Membership - NCC
PO Box 416
Cambridge, OH 43725-0416
or by e-mail to:
membership@cambridgeglass.org



CONTACT US

NCC Business Manager
Phone: 740 432-4245

businessmanager@cambridgeglass.org



Freeman Moore, President

e-mail: president@cambridgeglass.org

Christine Smith, Secretary

e-mail: secretary@cambridgeglass.org

Heritage Society

Ensuring the preservation mission of the NCC through planned giving and estate bequests.

Members of The Heritage Society are those who have included the NCC in their wills or estate plans, thus providing the organization with a secure future.

The mission of The Heritage Society is to foster smart estate planning and to assure that NCC is not forgotten as an important beneficiary. Any pledge is meaningful and appreciated.

All Cambridge collectors - both current and future - will benefit from, and be grateful for your support.

Let us know how we can help with your future plans.

Museum:

National Museum of Cambridge Glass



Like us on Facebook

Member: Cambridge Glass/National Cambridge Collectors

NCC Website: www.CambridgeGlass.org

NCC Museum Website: www.cambridgeglassmuseum.org

Miami Valley Study Group Website: www.mvsg.org



PRESIDENT'S MESSAGE

Member Donations

Last month, I asked about “Why NCC?” I’d like to continue on that thought and how you can help our mission of educate and preserve for future generations.

You often read in Cindy Arent’s articles that the Museum receives donations of glass. This was particularly true in June with people coming to convention and bringing their donations. If the museum already has examples of the items, the duplicates might be sold in the gift shop or consigned to the March auction.

NCC recently received a generous donation of cash and glass from a member. She was moving to a smaller location and it was time to downsize her collection. She was proactive and decided to sell most of it; and donated the proceeds to NCC. She also donated some of her special pieces of Chantilly for the museum. This was her plan so her family wouldn’t have to do something later. Another member has been doing annual donations of glass to NCC to downsize his Caprice collection; so his family wouldn’t have to do it later. NCC appreciates your thoughtfulness.

Is NCC included in your estate planning? Does your family know what you would like have done with your glass collection? Do you have a plan? If you don’t want your glass collection to be sold in a garage sale, make sure your desire is documented in your estate plan. We’re all getting older and need to consider how to preserve our collections for the next generation. Look on the previous page for information about the Heritage Society. Let me know if you would like to receive more information about it.

The end of the year involves tax planning for many of us, and your tax-deductible charitable contributions are appreciated. Look at Doug Ingraham’s article in the October 2021 Crystal Ball about charitable giving

from an IRA. If you haven't yet responded to this year's Annual Fund mailing, you might consider this option.

Over the next few months, your board will be working through the results of the membership survey that was conducted this summer by the new membership committee. Some topics are for membership, some for the board (including the discussion about board size), some for education; and we'll keep you informed.

You might have noticed a quarter page announcement in this and the previous Crystal Ball about Volunteer Opportunities. We going to highlight an opportunity every month. I would encourage you to reach out to us if you want to help; either in a way that is listed or some other ideas that you might have. We have members who have been doing the same job for years and could use some relief. If you’re not sure how you can help, drop me an email and I’ll connect you with the appropriate contact.

What’s coming?

The Fall Membership Meeting and Educational Program will be held October 8. It is a little earlier than usual this year due to room availability. You can expect pictures in the November/December issue of the Crystal Ball.

What’s on your Cambridge “wish list” for this year and beyond, and how can we help?

Stay energized and share the word!

Sincerely,

Freeman Moore
president@cambridgeglass.org

The Museum's Time to Shine: Receives Chamber of Commerce Snazzy Award

By Cindy Arent

Fall is in the air and holiday planning is in progress. Tour group scheduling is being sent to staff and volunteers with the many updates. And, it won't be long before we are the recipient of many, many leaves from Founder's Cemetery located behind the Museum. Happy Fall!

The Cambridge Area Chamber of Commerce Snazzy Awards are presented to businesses that have made significant improvements to their facilities since June of 2021. These improvements enhance the general appearance and visual appeal of their facilities and their place within the community. The Museum was chosen for the exterior LED lighting project. All of the very old overhead can lights were replaced with new fixtures. New LED up lighting fixtures were also installed in the trench under the exterior signage and the results look wonderful! The awards were presented by Chamber President, Jennifer Vincent at the Business After Hours held at the Community Development Corporation's Great Guernsey Trail.

This season we have had very interesting and educated visitors at the Museum. People always ask what makes the color of the glass and this year we had visual answers. If you remember, during the pandemic, we received a donation from Western Illinois Museum that included original Cambridge Glass Company jars of coloring agents and formula chemicals. Many of these have been added to the display area and have been well received by our guests. The process begins in Case #2 with a jar of silica sand. We recently had visitors from the Netherlands and they absolutely loved the educational aspect of the tour, especially the beautiful colors and designs, the etching plates and of course, dressing as glass workers.



Cadmium Sulfide
coloring for Carmen glass

An original jar from The Cambridge Glass Company is on display in the Carmen showcase.

The Guernsey County Sheriff's Department will provide Active Shooter Training at the County Administration Building on October, 17 sponsored by the Cambridge/Guernsey County Visitors & Convention Bureau. Unfortunately, in this day and age, mass shootings are happening across our country at an alarming rate. We read or hear about them at least once a week. This presentation will help us recognize red flags and how to safely react in an active shooting situation. We appreciate the opportunity to participate.

The Museum will close for the regular season on Sunday, October 30 and will reopen for the holiday season on Friday, November 4. Holiday days/hours of operation are: Friday and Saturday from Noon – 4:00 pm, November 4 through December 17.

We hope to see you at the Museum! ■



These visitors from the Netherlands enjoyed every minute of their Museum tour.



Lindy Thaxton and her tour group from Dublin, Ohio enjoyed the beautiful Colors of Cambridge Glass.

These beautiful Amber Mount Vernon luncheon sets are available in the Museum Gift Shop. Many thanks to volunteer Sally Slattery for her creativity!



We received a large donation of Chantilly etched glassware from a member downsizing her collection. These are a few of the pieces that have been added to the Museum Collection and are on display.



During the September Cambridge Area Chamber of Commerce Business After Hours, we received a Snazzy Award for the Museum's exterior LED light fixture replacement project.

Shown L – R are: Sandi Rohrbough, Lindy Thaxton, Jennifer Vincent (Chamber President), Cindy Arent and Diana McMahon.

The new LED lighting is wonderful!



In Memoriam

NCC is saddened to learn of the recent passing of Donald Wormland member #3457. Donald served honorably in the United States Army. He was a glass repair artist, collector of Cambridge glass, Whiskey bottles, lighters and shot glasses. We send our thoughts and prayers to the family.

NCC is saddened to learn of the recent passing of Bud Walker member #4255. Bud shared his knowledge about Cambridge glass and glass collecting with several articles in the Crystal Ball. We send our thoughts and prayers to the family.

Paper or email? What's your choice?

Did you know you have a choice of how to receive the Crystal Ball newsletter? Some of you like to hold a paper copy that you receive via the postal service. The printed version is black and white for cost reasons. In prior years, NCC would have printed two issues in color (the auction and convention issues). However,, the cost for color printing is about 3 times greater than black/white, and the printing of color issues was discontinued.

However, there are members who receive the newsletter by email. They receive a PDF of the newsletter which is in color. They can view the PDF on their phone/tablet/computer/etc and zoom into photos for more detail. They also receive it on the 1st of the month, slightly quicker than using the postal service.

Another option is to receive BOTH the paper and email notice.

If you would like to change how you receive the Crystal Ball, just send an email to membership@cambridgeglass.org and indicate your preference.

If possible, consider attending the Michigan Depression Glass Society's October meeting, with NCC members Mike Strebler and Jack Thompson as guest speakers with a program on Cambridge Glass Cuttings.



Civic Park Senior Center
15218 Farmington Rd
Livonia, MI 48154

6:00-7:00pm Buy/Sell time

7:00-7:45pm Business Meeting

7:45-8:00pm Coffee/Cookie Break

8:00-9:00pm Program on Cambridge Cuttings

Some of the most beautiful artistry in all of glass making is done by the glass cutter. It is an artist with his tools and a piece of glass. The Cambridge Glass Company utilized this artistry in a major way, particularly during the second half of the company's history. We will explore what cuttings are, how they were done and how Cambridge utilized this incredible art form.



1528 - 10 in Vase, Mandarin Gold, RCE Wedding Rings



500/6, 11 in. Ftd. Flower Holder, RCE Windsor 500



671 - Confiture with Vase, Lt. Emerald, Unidentified Gray Cutting

Zoom & Tell: Jade and Pomona Green

by David Ray

For nearly two years, the Zoom and Tell programs have presented the various colors of glassware produced by The Cambridge Glass Company. For the August Zoom & Tell program, we focused on the colors Jade and Pomona Green (aka Avacado) which represent the two opaque shades of green glassware produced by Cambridge. Les Hansen opened the program with background information about the production periods and chemical formulas for producing these colors. These colors were produced in the mid to late 1920's for a very limited period of time. Since both colors are opaque glass, flourspar or Calcium Fluoride was an ingredient in both chemical formulas. The green colorant in Jade was mainly copper and the green colorant in Pomona Green was mainly Chromium. Although both colors are considered a shade of green, their colors do vary significantly.

Jade, produced from 1924-1925, is a bluish green shade of glass that is considerably more difficult to find when compared to most of the other opaque glassware produced by Cambridge in the 1920's. The very short production period is likely the best explanation. Although Jade can be difficult to find, the 366 7" twist candlestick must have been extremely popular. Console bowls with a pair of Jade twist candlesticks seems to appear at nearly every glass and antique show. Jade can be found decorated with gold trim, the gold encrusted or enamel filled E705 etching, the popular black enamel filled Dragon etching, and silver decorated, done by the National Silver Deposit Company.

Pomona Green (aka Avacado) was introduced in 1927 and was in produced for approximately one year. Pomona Green was the last opaque color introduced in the 1920's, and as a result, it was produced in several new blanks. Pomona Green can be found decorated with the E722 Dresden Rose, the E120 Rose and the E805 Imperial Hunt etchings. Finding a piece of decorated Pomona Green is not an easy task, so consider yourself lucky to add such a wonderful item to your collection. Another unique aspect of Pomona Green is that Cambridge produced the 3085-stemware line in this color. Pomona Green stemware is extremely rare and collectors are willing to pay top dollar add these pieces to their collections. These stems can be found with the E120 Rose and E805 Imperial Hunt etchings.



Upcoming Zoom & Tell programs:

- October 18 – Transparent Blues of the 1920's
- November 15 – My Favorite Find
- December 20 – Decorating with Cambridge glass

The final two Zoom & Tell programs for 2022 will be a little different. These programs will be participant-led programs where members are encouraged to share stories about their favorite piece of Cambridge glass and how they used Cambridge glass to decorate their home.

If you were unable to join a Zoom and Tell program live, then you can request a YouTube link from Freeman Moore (membership@cambridgeglass.org) and watch the program at your convenience. We hope to see you at next Zoom and Tell program! ■



Membership Corner

The NCC Board of Directors relies on the five operational vice-presidents to oversee most of the work of NCC. Additionally, the board may create committees to help conduct business. In June, the board approved the creation of a membership committee to support the Member Services operational area. A primary function of this committee is to support membership retention and new member recruitment.

Our first task was to develop and implement a membership survey that was distributed at this year's convention. It was also sent by email to everyone, and for those without email, we us-mailed paper copies. We are now in the process of evaluating the results of the survey. We plan to identify what is important to the membership and to implement new programs with board approval that would be valuable to the members. We are open to your inputs to ensure that NCC is relevant to all of our members, especially our members unable to attend NCC events in Ohio.

Committee members are Elaine Thompson, chair, Ken & Jane Filippini, Freeman Moore, Christine Smith, and Lisa Strebler.

If you are interested in serving on this committee, please contact Elaine Thompson at elainethompson@roadrunner.com

New Members

Christopher Heffley	OH
Tina Heffley	OH
Carol Smith	FL
Richard Smith	FL

Recent Finds



3500/85 - 10" no compartment relish, 2-handle, engraved Adonis



Volunteer Opportunity

We currently have a volunteer opportunity to help us navigate the process of obtaining grants.

We could use the help of someone experienced at writing grants to help NCC fund new activities, without relying upon the financial support of our members. We have been successful in the past with Cambridge and Ohio grants, but we believe there are untapped opportunities from the Federal government. Perhaps this could be a position for someone wanting to try a new experience. We'll help you as much as possible, and make it easy for you to do remotely.

If interested, please contact Julie Buffenbarger, V.P. of Development, for more information.

Julie.Buffenbarger@gmail.com

Welcome to the eBay Report, featuring Cambridge glass items that sold on eBay circa mid- August through mid-September 2022. Selling prices are rounded to the nearest dollar. If no color is mentioned, assume that the piece or part of it being discussed is crystal. If I refer to an auction as “incognito,” that means that the seller did not know he or she was offering Cambridge glass, and didn’t use the word “Cambridge” in the description. I also try to mention if a listing was a Buy It Now offering, as opposed to an auction style listing. I think it’s important to distinguish between the two, as the price for an auctioned item reflects competitive bidding (or no competition, if it sells for the opening bid.)

I was not particularly impressed with the selection of Rose Point and Statuesque (nude stem) stemware for the reporting period, so for the first time, I have axed both of those categories in my report.

Here we go:

Gold, Silver and Enamel Decorations

A #1402 Tally Ho 7-3/4 inch water goblet with Carmen bowl and #D/1007 gold decorate sold for the very reasonable \$30 opening bid.



A #1130 11 inch footed vase in Crown Tuscan with gold encrusted Portia etching was offered at \$130 and sold for an undisclosed Best Offer. Whaaat? A discount from THAT number? I have never seen this shape with Portia. That seller definitely left money on the table.



Pair of #7801 hollow stem champagnes etched and gold encrusted Portia sold for \$574 Buy It Now. I note that these had the plain blown stem, rather than the cut and polished paneled stem.

Etched Tableware & Stemware

A #3400/1185 9-1/2 inch 2-handled bowl etched Candlelight sold for the opening bid of \$35.



A #531 comport with the etched Lily of the Valley decoration and the satinized highlighting on the leaves and all over the stem and foot, was offered for \$60, and sold

when the seller reduced the price to \$45 Buy It Now. The same seller offered the matching #1121 ice pail with chrome bail at \$150, which sold when the price was reduced to \$112 Buy It Now.

One seller offered a 12-1/2 inch round tray etched Diane. I couldn’t figure out the blank, so I enlisted the help of several collectors. One said, “Could this be the #1031 13 inch cake plate?” Another said, “I think that this is the #324 tray that is part of the 6 piece relish set. See the 1930-1034 catalog reprints, page 32-21.” I’m going to agree with the latter i.d. It sold for \$48. To complete it, the buyer could purchase a complete set of the plain inserts that is currently being offered on eBay!



The #106 66 ounce covered jug plus 4 tumblers etched #704 sold for \$103 Buy It Now.



A #730 half-pound covered candy in PeachBlo etched Rosalie sold for \$120 Buy It Now.

A #124 68 ounce covered jug in Light Emerald Green etched #704 with some gold on a band portion of the etching sold for the opening bid of \$140.

A #3400/29 keyhole stem comport with Amber bowl etched Diane sold for \$150 Buy It Now.



A set of 3 #3115 goblets with Willow Blue stem and PeachBlo bowls, etched Rosalie, sold for \$168. There are only two companies I can think of that made such a color combination: Cambridge, and Morgantown.



A pair of #3400/646 keyhole style single candleholder in Gold Krystol etched Diane sold for \$175 Buy It Now. Just a few months ago, I was complaining that major etched patterns that are most often seen on Crystal (Portia, Diane, etc.) were



selling for seemingly too-low prices when etched on pastel colors like Light Emerald Green, PeachBlo, Amber and Gold Krystol. So this result was nice to see.

Speaking of Diane etched on Gold Krystol, another seller offered a set of eight #3400/62 8 inch plates, which sold for \$100 Buy It Now.



A #124 68 ounce covered jug in PeachBlo etched Cleo sold for \$290 Buy It Now.

A #P101 cocktail shaker etched Roselyn sold for \$320 Buy It Now.



Miscellaneous



A seldom-seen Everglade #34 12 ounce footed tumbler sold the opening bid of \$26. The shape resembles an extra-large sherbet. Unfortunately the seller did not provide any dimensions.

One seller offered 4 #1314 footed ashtrays with the #1066 "Aurora" notched hobnail ball stem. The Gold Krystol one sold for \$41; the Royal Blue one sold for \$51; the Amber one sold for \$71; and the Forest Green one sold for \$100.



A Caprice #178 80 ounce Doulton pitcher in Amethyst sold for the opening bid of \$100. This one had the simpler handle, rather than the fancy "flip" handle, similar to the version sold in a Farber holder.



An Everglade #27 cream & sugar set in Moonlight Blue sold for \$104.

A #3011 Statuesque (nude stem) comport with cupped bowl in a light green sold for \$75 Buy It Now. Then another one in the same color sold for \$104, garnering 14 bids. Were these Light Emerald, or Pistachio? I seldom see the comport with this color bowl, and here there were, two of them.



A pair of #3400/54 cups and saucers in PeachBlo etched Gloria sold for an impressive \$107.

A pair of #3900/575 cornucopia vases with weighted sterling silver bases and King Edward polished cutting sold for \$172 Buy It Now, after the seller discounted them by 50%.



A set of 10 swan punch cups sold for \$180 Buy It Now.

A vanity set consisting of a #581 puff box and 2 #198 cologne bottles with dauber stoppers in the "Cobalt #1" or "Cobalt #2" color of the 1920s sold for \$200 Buy It Now.



A #3075 footed handled decanter with hollow stopper in PeachBlo sold for \$22 Buy It Now in an incognito listing. For comparison, the same piece etched Hunt scene sold for \$335 back in July.



An Ebony #880 handled tray that holds four tumblers, with the impressed four card suits, sold for \$85 Buy It Now.

A #40 Seashell flower or fruit arranger (commonly referred to as the Flying Nude bowl) in Windsor Blue went for \$611 after 17 bids. It's been a while since I've seen one of these offered in this color.



That's it for now. If you see any interesting Cambridge glass on eBay that you think I should be watching or reporting on, or if you have any other input, feel free to contact me at LAGlass@pacbell.net. I am well aware that I don't catch every interesting listing, and now that eBay no longer has a category devoted to Cambridge glass, I will especially need your help. Until next time, happy Cambridge hunting!

Recruit
and
Retain

Give this page to a friend



The National Cambridge Collectors
P.O. Box 416 ~ Cambridge, Ohio 43725

“FRIENDS OF CAMBRIDGE” MEMBERSHIP

The National Cambridge Collectors, Inc. (NCC) is a non-profit organization dedicated to the education and preservation of the great work of the Cambridge Glass Company. Founded in 1973, we depend on the financial support of our members, who we call **Friends of Cambridge**, for the majority of our operating budget. Won't you consider becoming a Friend of Cambridge? You can also complete this online at: <http://cambridgeglass.org/online/>

Friend #1 _____

Friend #2 _____

Friend #3 _____

(continue on reverse if needed - indicate any children and their year of birth, only those 18 and older residing in your household may vote)

Address _____

City/State/Zip _____

Email Address (required) _____

Phone Number _____

Crystal Ball newsletter delivery: ___ email (color) ___ paper (black & white)

Glass collecting interest: _____

New Member? (Y/N) ___ or Renewal? ___ If renewal, Member #s _____

Levels of Membership

Patron \$ 35

Century Level	\$ 100	Mardi Gras Level	\$ 200
Japonica Level	\$ 500	President's Circle	\$ 1,000

All members receive the Crystal Ball, free Museum admission and 10% off any book/DVD purchases, President's Circle includes Convention registration for two members in the household and one free copy of any new NCC publication.

All memberships are renewed annually via The Annual Fund mailing in late March/early April. All Annual Fund gift recognition levels are per household and include membership for everyone within the household 18 and older. Each household will receive a subscription to the Crystal Ball newsletter, unlimited admissions to the museum, and rights to vote in elections for the Board of Directors and discounts on NCC books. NCC is a 501(c)(3) organization and Annual Fund gifts are allowed as a tax deduction under Section 170 of the Internal Revenue Code. Contact your tax advisor for your individual situation.

Return this form with check or money order payable to NCC, Inc. at the above address.
And always visit us at www.cambridgeglass.org to see what's new!

For Sale - NCC Publications

Published by NCC • Members receive a 10% discount

TITLE		REGULAR PRICE	MEMBER PRICE
1903 Cambridge Glass Catalog reprint	106 page reprint, paperback.	\$5.56	\$5.00
1910 NearCut Catalog Reprint	108 pages, paperback, no price guide	\$14.95	\$13.45
1927-29 Catalog Reprint	66 pages, paperback, no price guide, includes identification guide	\$9.95	\$8.95
1930-34 Catalog Reprint	250 pages, paperback with 2000 price guide	\$14.95	\$13.45
1930-34 Catalog Index	Index for above	\$2.00	\$1.80
1940s Cambridge Glass Catalog reprint	613 page reprint, 3 hole punched	\$19.95	\$17.95
1949-53 Catalog Reprint	300 pages, paperback, no price guide	\$19.95	\$17.95
Cambridge Rose Point – A Collector’s Guide 2018	color, spiral bound	\$29.95	\$27.00
Cambridge Rose Point – 2nd Edition 2007	146 pages, paperback, no price guide	\$19.95	\$17.95
Caprice	200 pages, paperback, no price guide	\$19.95	\$17.95
Decorates	136 pages, paperback, no price guide	\$14.95	\$13.45
Etchings 2nd Edition 2006	102 pages, paperback, no price guide	\$17.95	\$16.15
Etchings: Blossomtime	26 pages, paperback, no price guide	\$7.95	\$7.15
Etchings: Candlelight	30 pages, paperback, no price guide	\$7.95	\$7.15
Etchings: Chantilly	44 pages, paperback, no price guide	\$7.95	\$7.15
Etchings: Diane	53 pages, paperback, no price guide	\$7.95	\$7.15
Etchings: Elaine	64 pages, paperback, no price guide	\$7.95	\$7.15
Etchings: Portia	57 pages, paperback, no price guide	\$7.95	\$7.15
Etchings: Wildflower	42 pages, paperback, no price guide	\$7.95	\$7.15
Rock Crystal Engravings	119 pages, paperback, no price guide	\$17.95	\$16.15
Rock Crystal Engravings (Listings)	Companion to above; lists all pieces in all patterns	\$9.95	\$8.95
Other:			
Cambridge Ohio Glass in Color	by Mary, Lyle and Lynn Welker 30 pages, color	\$6.61	\$5.95
Reflections	by Degenhart Paperweight & Glass Museum 45 pp	\$5.56	\$5.00

How to Order by Mail or from the NCC Website

Send orders to:
NCC • PO Box 416 • Cambridge, OH 43725

OHIO RESIDENTS PLEASE ADD 7.25% SALES TAX

SHIPPING:
\$8.00 FOR THE FIRST PUBLICATION
\$2.00 FOR EACH ADDITIONAL ITEM

Please include your name, complete mailing address and your phone number or e-mail address.

Payments by check or Money Order only, payable to NCC

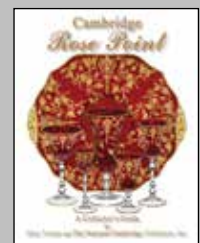
Books may also be purchased on the NCC website,
www.cambridgeglass.org.



The following books can be purchased on Amazon and downloaded to your Kindle device



Cambridge Glass Colors



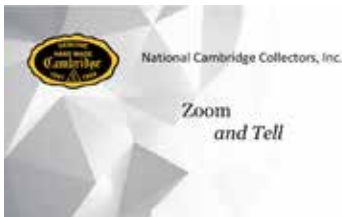
Cambridge Rose Point

NCC Events

**Fall Membership Meeting
Friday October 8, 2022**

**March Meeting and Auction
Friday March 17 and 18, 2023**

**2023 NCC Convention
June 22-24, 2023**



Contact membership@cambridgeglass.org if you don't get the monthly email with the Zoom information.

October	Transparent Blues of the 1920's
November	The item you are most thankful to have found.
December	Decorating with Cambridge Glass

Member Benefit

Each NCC household is allowed one free 20-word classified ad in the Crystal Ball per calendar year as part of their membership. This can be a "For Sale" or "Wanted" type of classified ad. Submit your ad by email to editor@cambridgeglass.org

CLASSIFIEDS

WANTED: One Caprice 300 9 oz. Mocha goblet to replace one that I broke kklaviter@icloud.com 🙏

FOR SALE: 1 Crown Tuscan 5 oz. Seafood Cocktail or Sherbet \$60.00 Contact Mary Jane Humes at mjhumes@aol.com



October 1-2, 2022

Front Range Glass Show and Sale
The Ranch Event Complex: McKee Exhibit Hall
5280 Arena Circle
Loveland, CO
<https://frontrangeglassshow.com/>

October 6-8, 2022

Indiana Glass Collectors Convention
Wheel & Spoke Event Center / 555 Bridge Street
Portland, IN 47371
<https://www.facebook.com/groups/712395903037736>

October 7-8, 2022

Western Reserve American Glass Club Glass Show & Sale
Holy Trinity Lutheran Church
6220 Broadview Rd
Parma, OH 44134
wragclub@gmail.com

October 15-16, 2022

Milwaukee Vintage Glass Show and Sale
Knights of Columbus Hall / 732 Badger Avenue
South Milwaukee, WI 53172
degswisconsin@gmail.com

October 21-22, 2022

Valley Glasshoppers
Fall 2022 Glass Show & Sale
1309 Opequon Ave
Winchester VA. 22601
valleyglasshoppers@yahoo.com

October 28-30, 2022

Alabama Classy and Sassy Glass Show
The Anderson Center / 201 Bayles St
Anderson, AL
<https://www.facebook.com/Alabama-Classy-and-Sassy-Glass-Show-105304294626389/>

November 5-6, 2022

Michigan Depression Glass Society
Annual Depression Glass Show & Sale
Ford Community & Performing Arts Center
15801 Michigan Ave
Dearborn, MI 48126
<https://www.michigandepressionglass.com/glass-show>

DEALER DIRECTORY

Dealer Directory - \$24 for 12-months, size limited by box (see below). Includes listing on NCC website. Electronic submissions should be emailed to: editor@cambridgeglass.org

Advertising Rates:

1/8 page \$15 1/4 page \$20
 1/2 page \$30 Full page \$50

Mailed submissions and all payments should go to PO Box 416, Cambridge, OH 43725. Deadline is 10th of preceding month. Ads must be paid in advance. Show listings are FREE; send info to PO Box or e-mail address 60 days before event.

<p style="text-align: center;">Max Miller Elegant American Glassware www.maxmillerantiques.com</p> <p>The Market Place 10910 Katy Freeway. 713-410-4780 Houston TX 77043 mmxglass@aol.com</p>	<p style="text-align: center;">ISAACS ANTIQUES (740) 826-4015</p> <p style="text-align: center;">↔ <i>located in</i> ↔ DealBusters Marketplace 61 S. 2nd Street Byesville, OH (740) 605-1010</p>
<p style="text-align: center;">Glen & Carolyn Robinson White Rose Antiques Specializing in Depression Era Glassware</p> <p style="text-align: center;">2454 McFarland Road York, SC 29745</p> <p>803-684-5685 gandcrobinson@aol.com whiteroseglassware.com</p>	<p style="text-align: center;">MARGARET LANE ANTIQUES</p> <p>2 E. Main St. New Concord, OH 43762 Lynn Welker (740) 705-1099</p> <p>Cambridge Glass Matching Service Hours: Mon-Fri 10-12 AM, 1-5 PM or by appointment</p>
<p style="text-align: center;">CRYSTALLINE COLORS <i>Cambridge • Fostoria • Elegant Glass</i> Booth and Showcases in the Medina Antique Mall Medina, OH (I-71, exit 218)</p> <p style="text-align: center;">Lynne R. Franks 216-661-7382</p>	<div style="border: 1px solid black; padding: 5px;"> <p style="text-align: center; background-color: #4b0082; color: white; margin: 0;">Connecting Buyers & Sellers!</p> <p style="text-align: center; margin: 0;">Tell us what you are looking for and we help find it.</p> <p style="text-align: center; background-color: #4b0082; color: white; margin: 0;">CAMBRIDGE GLASS.US</p> <p style="text-align: center; margin: 0;">P. Snyder 740-601-6018</p> <p style="text-align: center; background-color: #4b0082; color: white; margin: 0;">E-Mail and Find Your Glass!</p> <p style="text-align: center; margin: 0;">psnyder@cambridgeglass.us</p> <p style="text-align: center; margin: 0;">www.cambridgeglass.us</p> <p style="font-size: small; margin: 0;">When you are searching for Cambridge glass, email your request and it is emailed to all members and dealers. P. Snyder, 1500 Edgewood Dr., Circleville, Ohio 43113</p> </div>
<p style="text-align: center;">CRYSTAL LADY 1817 Vinton St. Omaha, NE 68108 Bill, Joann and Marcie Hagerty 402-699-0422</p> <p>Specializing in Elegant Glass & Collectibles www.crystalladyantiques.com</p>	<div style="border: 2px solid red; padding: 10px; text-align: center;"> <p style="font-size: 1.2em; margin: 0;">Our House Antiques</p> <p style="font-size: 0.8em; margin: 0;">Linda and David Adams Las Vegas, Nevada 702-302-8282</p> <p style="font-size: 0.8em; margin: 0;"><i>Shows and Mail Order only</i></p> <p style="font-size: 0.8em; margin: 0;">email: David@OurHouseAntiques.com</p> <p style="font-size: 0.8em; margin: 0;">www.OurHouseAntiques.com</p> </div>



National Cambridge Collectors, Inc.
PO Box 416
Cambridge OH 43725
email: editor@cambridgeglass.org
website: www.cambridgeglass.org



Friends of Cambridge – Annual Fund

NCC exists through member giving using an Annual Fund system to raise operating funds and to ensure the preservation of Cambridge glass for future enthusiasts. The Annual Fund uses a common member "renewal" date and NCC sends out Annual Fund materials to everyone once a year. There are no monthly reminders or monthly renewal dates. The Annual Fund is NCC's primary means of support and all Annual Fund gift recognition levels are per household and include membership for all adults within the household. Additionally, each household will receive a subscription to the Crystal Ball newsletter, unlimited admissions to the museum, and rights to vote in elections for the Board of Directors. Multiple households at the same address are welcomed. NCC is a 501(c)(3) organization and Annual Fund gifts are allowed as a tax deduction under Section 170 of the Internal Revenue Code.

Levels of Membership

Patron	\$35
Benefactor - Century	\$100
Benefactor - Mardi Gras	\$200
Benefactor - Japonica	\$500
President's Circle	\$1,000

Thank You

President's Circle includes Convention registration for two members in the household and one copy of any new NCC publications.

The National Museum of Cambridge Glass

Located at 136 S. 9th Street
in downtown Cambridge
Wed-Sat 9-4
Sunday 12-4

