



# Cambridge Crystal Ball

Published by the National Cambridge Collectors, Inc. as a resource which informs, invites and inspires people to encourage the continued preservation of the glass produced by the Cambridge Glass Company of Cambridge, Ohio for future generations.

Issue No. 563

ISSN 2474-5987

November/December 2022

## Non-Cataloged Etching #1014

No. 1014

Date: ND  
Piece: See Note  
Engraver: Endler  
Note: Will be found on numerous items such as 533 comport/underplate, candy box cover, 487 plate, 676 bowl, 168 sandwich tray. Probably dates to 1920s.



#168 10" Sandwich Tray



#299 5 in 3-toed Candy Box and Cover



#441 10 1/2" Comport

### *What's Inside*

Non-Cataloged Etching #1014.....	1
President's Message .....	3
What's Happening During the Holidays at the Museum?.....	4
Fall Membership Mtg & Educational Program .	8
Zoom & Tell: Smoke, Crackle & Mardi Gras... 10	
From the Vaseline Glass Collector's Convention. 11	
Reissues of Cambridge Figural Flower Holders 12	
eBay Report .....	14
Membership Corner .....	16
New Members .....	16
Amazon Smile program .....	16
Volunteer Opportunity.....	16
NCC Events .....	18

# National Cambridge Collectors, Inc.

PO Box 416 Cambridge, OH 43725-0416

## Board of Directors

	2023	
Nancy Misel	Lindy Thaxton	Lynn Welker
	2024	
Cindy Arent	Larry Everett	Mike Strebler
	2025	
Ken Filippini	Freeman Moore	Christine Smith
	2026	
Julie Buffenbarger	David Rankin	Frank Wollenhaupt

## Officers

President	Freeman Moore
Vice-President	Ken Filippini
Secretary	Christine Smith
Treasurer	Mike Strebler
Sergeant-at-Arms	Larry Everett

## Committees

Endowment	Membership
Finance	Technical Decision
Property	Digital Strategy
Strategic Planning	Digital Preservation

## Member Services

### Vice President

Member Relations  
Convention  
Member Social Media  
Glass Dash  
Glass Show  
Study Groups  
Webmaster

Freeman Moore  
Freeman Moore, Membership Database  
Julie Buffenbarger & Christine Smith  
David Ray  
Larry Everett & Frank Wollenhaupt  
David Ray, Mike Strebler, Jack Thompson  
Jeannie Moore, Study Group Coordinator  
David Adams

## Development

### Vice President

Campaigns  
  
Events  
  
Projects  
Publicity

Julie Buffenbarger  
Ken & Jane Filippini, Annual Fund Directors  
Larry Everett, Director of the Heritage Society  
Lindy Thaxton,  
Lynn Welker, Auction Managers  
Susan Everett & Frank Wollenhaupt, Jewelry  
Convention: Jonathan Fuhrman

## Education

### Vice President

Crystal Ball  
Digital Archivist  
Programs  
Publications  
Media Productions  
Research

Jack Thompson  
Freeman Moore, Editor  
Dave Rankin  
(open)  
Larry Everett, Director of Publications  
Dave Rankin, Director of Media Productions  
Dave Rankin, Director

## Museum

### Vice President

Public Operations  
Facilities & Grounds  
  
Inventory Management  
Collections  
Museum Gift Shop  
  
Archivist  
Museum Social Media  
Community Relations

Cindy Arent  
Lindy Thaxton, Director of Public Operations  
Cindy Arent,  
Joe Miller,  
Lindy Thaxton  
Lindy Thaxton, Director of Inventory Management  
Lynn Welker, Director of Collections  
Cindy Arent, Gift Shop Manager  
Lynn Welker, Gift Shop Manager  
Mark Nye, Director of Archives  
Cindy Arent, Director  
Cindy Arent

## Administration

### Vice President

Accounting & Finance

Larry Everett  
Lisa Neilson, Office Manager

## MEMBERSHIP QUESTIONS?

Please send address changes to:  
Membership - NCC  
PO Box 416  
Cambridge, OH 43725-0416  
or by e-mail to:  
[membership@cambridgeglass.org](mailto:membership@cambridgeglass.org)



## CONTACT US

NCC Business Manager  
Phone: 740 432-4245

[businessmanager@cambridgeglass.org](mailto:businessmanager@cambridgeglass.org)



Freeman Moore, President

e-mail: [president@cambridgeglass.org](mailto:president@cambridgeglass.org)

Christine Smith, Secretary

e-mail: [secretary@cambridgeglass.org](mailto:secretary@cambridgeglass.org)

## Heritage Society

*Ensuring the preservation mission of the NCC through planned giving and estate bequests.*

Members of The Heritage Society are those who have included the NCC in their wills or estate plans, thus providing the organization with a secure future.

The mission of The Heritage Society is to foster smart estate planning and to assure that NCC is not forgotten as an important beneficiary. Any pledge is meaningful and appreciated.

All Cambridge collectors - both current and future - will benefit from, and be grateful for your support.

Let us know how we can help with your future plans.

### Museum:

National Museum of Cambridge Glass



Like us on Facebook

Member: Cambridge Glass/National Cambridge Collectors

NCC Website: [www.CambridgeGlass.org](http://www.CambridgeGlass.org)

NCC Museum Website: [www.cambridgeglassmuseum.org](http://www.cambridgeglassmuseum.org)

Miami Valley Study Group Website: [www.mvsg.org](http://www.mvsg.org)



# PRESIDENT'S MESSAGE

## *End of Year already?*

Here it is mid-October, and it's time to think towards the end of the year. Just a reminder that this is a combined November/December issue of the Crystal Ball.

Jeannie and I had an enjoyable time at the Fall Membership Meeting and Educational Program held October 8 in Cambridge Ohio. It was nice to meet fellow glass collectors and learn more about the Everglade family. A video recording of the program is available on the mvsg.org website. Having programs recorded is one way that NCC shares information with all of our members across the United States, Canada and Japan.

I have had the opportunity to talk with some of our members at recent glass shows. The majority of our members are not able to attend events such as the auction or fall meeting in person. We will continue doing the "Zoom and Tell" sessions next year, and I'll commit to having our March, June and October membership meetings on Zoom as well.

Next year will be a milestone year for NCC as we celebrate our 50<sup>th</sup> year, and I want to make certain we reach out and include our entire membership in acknowledging this event, starting in February.

If you will be doing online shopping this season, be sure to read the notice about the Amazon Smile program later in this Crystal Ball. It is an easy-to-use Amazon program that benefits non-profits such as NCC.

The end of the year involves tax planning for many of us, and your tax-deductible charitable contributions are appreciated. Look at Doug Ingraham's article in the October 2021 Crystal Ball about charitable giving from an IRA.

## *Volunteer*

You might have noticed a quarter page announcement in this and the previous Crystal Ball about Volunteer Opportunities. We're going to highlight an opportunity every month. I would encourage you to reach out to us if you want to help; either in a way that is listed or some other ideas that you might have. We can always use new ideas! If you're not sure how you can help, drop me an email and I'll connect you with the appropriate contact.

Our nominating committee will be looking for candidates to run for the board of directors. What about you?

What about writing an article about your collection? A little bit of text can easily be filled out with pictures. Or, do you have ideas for articles that you'd like to see in the Crystal Ball? Let us know.

## *What's coming?*

Enjoy the holidays! If you decorate with Cambridge glass, consider sharing photos with other members by sending .jpg files to the editor.

January will be here soon, and that means reading over the auction listing that will be published in the January Crystal Ball. So, consider making plans to join us in-person for the March auction.

What's on your Cambridge "wish list" for this year and beyond, and how can we help?

Best wishes for a happy and safe holiday season from all of us at National Cambridge Collectors, Inc.

Sincerely,

Freeman Moore  
[president@cambridgeglass.org](mailto:president@cambridgeglass.org)



# What's Happening During the Holidays at the Museum?

By Cindy Arent

The Museum will close for the regular season on Sunday, October 30. However, it seems even busier in Cambridge with preparations for the holiday season. There are bus groups to schedule, decorating to do, maintenance projects to accomplish and 2023 museum budgeting to complete.

We enjoyed seeing so many members at the Museum during the Fall Membership Meeting and we all enjoyed the program about the Everglade line. As always, Tarzan Deel arrived with plenty of snacks to keep us going through the long days ahead.

The new Carmen and gold dining room display will be installed October 31<sup>st</sup> – November 2<sup>nd</sup>. The gold is to celebrate NCC's 50<sup>th</sup> in 2023. Photos of the new display will be posted on the Museum's Facebook page and in a future issue of the Crystal Ball.

The Cambridge Ornaments that we make from slightly damaged glass are now available in the Museum Gift Shop. They have been very popular and we've been shipping orders from coast to coast. If you are interested in purchasing an ornament and can't visit, call the Museum and we can describe what is available, 740-432-4245.

Lindy Thaxton just came up with another great idea. During the holiday season, we plan to have grab bags. They will include small Cambridge pieces and be in colorful bags. We have many small items that have not sold in the Gift Shop. So, by offering the grab bags each piece will hopefully find a new home. That should be fun!

It's time for the new Museum Holiday Season! The National Museum of Cambridge Glass will be open special holiday hours during Dickens Victorian Village. The museum will be decorated for the season and volunteers and staff will be dressed in Victorian attire. If you are looking for a special gift made in Cambridge, Ohio, visit the museum gift shop where you'll find genuine Cambridge Glass. The gift shop also features jewelry and ornaments made from recycled Cambridge Glass.

## HOLIDAY HOURS:

The museum will be open on Friday and Saturday: Noon to 4:00 p.m. beginning November 4 through December 17. Admission: \$6 General Admission: \$5 Seniors and AAA. There is no charge for members or if just shopping in the gift shop. The Museum Holiday Open House will be two days: Friday, November 25 and Saturday, November 26, from 12:00 p.m. to 4:00 p.m. each day. There will be no admission charge during the Museum Open House. Also, remember to *Shop Small* on Saturday, November 26<sup>th</sup> and every day throughout the year. We hope to see you at the museum during the holidays.

In closing, I would like to thank all of you for your support throughout the year. It means a lot to us as we continue our daily operations. We hope you enjoy the holiday season! ■



Tarzan Deel and Mary Jane Humes enjoyed looking at all of the Cambridge Cordials on display during the Fall Membership Meeting weekend..



NCC members, (L-R) Janice and Jim Miller, always choose their favorite ornaments. This year they found one etched Apple Blossom.



Many thanks to Nancy Misel for retrieving the museum sign on Wheeling Avenue at the end of a long day!



Our summer intern, Emma Stratton, was home for a visit and stopped in to see us! She and Anna Pavlov had fun with the Cambridge Arms interactive exhibit.



The Chamber's Youth Leadership Group visited the museum in October to learn about the history of The Cambridge Glass Company.

Kneeling volunteers L-R: Diana McMahon, Cindy Arent and Sandi Rohrbough. The student directly behind Sandi is the great-great niece of Elva Voltz, the premier gold decorator at The Cambridge Glass Company.





New members, Chris and Tina Heffley stopped by the Museum on October. Thank you for visiting!



Museum volunteer, Diana McMahon, leads students through the pieces introduced in the 1930s.



During the Student Leadership tour, friends from the Heisey Collectors stopped by for a visit.

(L-R) Cindy Arent, Martha McGill, Mary and Doug Olson. Martha and Mary and members of the Heisey Board of Directors.

**Holiday Hours**  
Friday - Saturday Noon - 4 p.m.  
November - December 17

Gift Shop includes authentic Cambridge Glass, Jewelry and Ornaments made from Cambridge Glass, gift boxes with Cambridge Glass and other gifts for the holidays. Museum guides dressed in Victorian attire!

**2022 HOLIDAY HOURS:**  
Open Friday and Saturday  
November - December 17; Noon - 4:00 p.m.  
Admission \$6, AAA and Seniors \$5; children 12 and under free

**National Museum of Cambridge Glass**  
136 S. 9th Street, Downtown Cambridge, Ohio  
740-432-4245 | [www.CambridgeGlassMuseum.org](http://www.CambridgeGlassMuseum.org)

This ad is made possible through the support of a grant from the Cambridge/Guernsey County VCE. [www.vts@guernseycounty.com](http://www.vts@guernseycounty.com) • 800-933-5480 • 627 Wheeling Ave., Cambridge, OH 43123



# Organizing and cleaning up at our mould storage building, Saturday October 22, 2022

Thank you to our hard working volunteers and the City of Cambridge for having their collection day! L to R: Randall Ross, Joe Miller, Lindy Thaxton and Jeff Ross.



Randall Ross and Jeff Ross are moving an original Cambridge Glass Company finishing bench.



Just some of the original tools in our storage building.





# Fall Membership Meeting and Educational Program

by Jack Thompson



It was a gorgeous fall day in Cambridge, OH as people gathered at Theo’s Restaurant for the annual fall membership meeting and program. It was NCC’s final event of 2022. After a fine meal ending with Theo’s pie, a brief business meeting was presided over by President Freeman Moore.

Lynn Welker started the evening’s entertainment off with many beautiful Show N Tell pieces. Included was a super rare #1037 Ebony Vase, Etched #731 on the side and a numbered etch on the top rim. Most of us had never seen this blank before; it’s in the ’27-29 and 30-34 catalogs. Also displayed were a Forest Green #1303 Vase, Etched Gloria; a #1402/33 – Sugar & Cream, RCE Laurel Wreath; Royal Blue #1066 Parfait and a #1066 Vase; and a very strange Royal Blue tall vase. There was also a #3129 Hollow Stem Champagne, RCE Hermosa variant. I wonder how they were able to cut those without breaking them. They seem so fragile and delicate. Maybe that’s why we rarely see them.

Lynn Welker then presented the main program on the Everglade family, starting with Springtime, then the Leaf Line, progressing through the Everglade line and ending with Arcadia. There was a fabulous display of glass brought by members, with some pieces from the museum. Thanks to Tim & Nancy Crose, David Ray, Bill & Sue Cowden and Jack & Elaine Thompson. Special thanks to Lynn for all his work. Thanks to Dave Rankin for doing the video. Recordings for both Show N Tell and the Everglade Program are posted on mvsg.org.







# Zoom & Tell: Smoke, Crackle & Mardi Gras

by David Ray

The September Zoom & Tell program focused on three different topics. As the color themes for the Zoom & Tell programs wind down, the team decided to combine two colors and a treatment from the re-opened period for the September Zoom program. The Cambridge Glass Company ceased operation in 1954 and re-opened about 1 year later. Smoke was one of the new colors introduced during that time. Cambridge struggled to sell glassware during the re-open years, so most colors produced during this time are somewhat difficult to find. Smoke is a gray/brown color that possesses a hint of Amethyst. The most common items found in Smoke are the nude stems (table goblet, champagne, cocktail, comport and ivy ball), the 1528 10" vase, 1519 10" vase and the Georgian basket. Smoke is one of the colors produced by Cambridge in which a person could collect every piece and easily house them in a single display case.

During the 1920's and the re-open period, Cambridge applied a crackle treatment to glassware. The "cracked glass" appearance was created by submersing the item into water while the glass was still very hot. I cannot image how challenging it must have been to keep the item from completely shattering during this sudden cooling process. The majority of items receiving the crackle treatment are vases, decanters, pitchers or drinking vessels. The crackling process was usually applied to pastel shades, but during the re-opened period, Cambridge crackled pieces of Smoke and Carmen. The only pieces of Carmen crackle to surface are the nude stems: table goblet, champagne, tall cocktail and ivy ball.



Mardi Gras was introduced around 1957 and required a multi-step production process. During his introduction, Les Hansen recounted an article written by Frank Wollenhaupt that described the detailed process for creating this unique style of glass. The glass worker began by gathering some crystal glass and rolling it across small pieces of broken glass called frit. It was essential that a small bubble of air was initially blown into the glass, else the process could not be completed. Once a sufficient amount of frit was stuck to the exterior of the glass, it was blown into a mold. Most of the pieces produced in the Mardi Gras line are either vases, decanters or bowls. The frit used to create Mardi Gras contains Amethyst, Carmen, Windsor Blue and Milk. Most Mardi Gras collectors consider White Rain and Blue Cloud as part of the Mardi Gras line. Like Smoke, the Mardi Gras line was a very small line and all the known pieces could easily be displayed in a single showcase, but the price tag would be much greater.



The theme for the November Zoom & Tell will focus on guests discussing the item(s) they were most thankful to add to their collection. Every collector has experienced a moment when their collecting dream came true. What was the most exciting item you added to your collection?

The December Zoom & Tell will focus on decorating with Cambridge glass. Some collectors have rotating seasonal displays in their homes, some collectors decorated their home with certain pieces of glass for special holidays and events and some collectors have accent pieces located throughout their homes all year long. How do you decorate with Cambridge? Please plan to share a few of the strategies you use to decorate with Cambridge glass at the December Zoom & Tell.

If you were unable to attend any of the past Zoom & Tell programs, please contact Freeman Moore at [membership@cambridgeglass.org](mailto:membership@cambridgeglass.org) and he will email you a link to any Zoom & Tell program. ■





# A Visit to the Vaseline Glass Collector's Convention

by Frank Wollenhaupt

The 23<sup>rd</sup> Annual Vaseline glass collector's convention was held in Dayton, Ohio on September 29<sup>th</sup> thru October 1<sup>st</sup>, 2022. <https://www.vaselineglass.org/>

Instead of a "glass show", their convention had a room to room selling venue. The members had a number of tours to attend which included The Greentown Glass Museum, Albany Glass Museum and the Dunkirk Glass Museum.

An interesting feature of the convention was an area where a member could set up a display of their collection. The members would then vote on the best display.

I was asked to do a presentation on Cambridge Vaseline (Topaz) glass. The presentation was attended by 35 to 40 members of their club. The members had numerous questions about Topaz. The primary questions centered around production dates and the various shapes that Topaz items were produced in. I had approximately thirty items of Topaz. The Buddha, Everglade Mug and the Dog bottle seemed to garner the most discussion.

After the talk, many of the members wanted to know additional information about our club and what our activities are at our convention. I passed out material about our museum, Crystal Balls and membership forms. Hopefully this will generate some new members for NCC. ■



#520 5½" Buddha  
Figure Book End



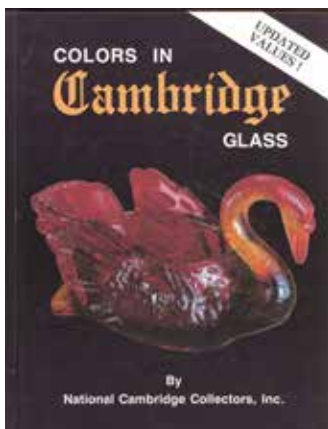
Everglade #43 12 oz. Mug



8 oz. Dog Bottle  
and Cap



#2800/32 3 oz.  
Cocktail



Introduced some time during the first four months of 1923, Topaz is a yellow-green transparent color, a color which is often called "vaseline" because of its similarity to the color of a popular brand of petroleum jelly. Glass collectors, as a whole, have lumped together any glass of this color, regardless of the maker, into a category called "Vaseline Glass." Cambridge never used that name or described its color in such a manner.

Production of Topaz resumed, probably for a short time, after the October 1931 introduction of the Statuesque line since pieces from this line with Topaz bowls are known.

# Reissues of Cambridge Figural Flower Holders

by Les Hansen

An updated chart with the known Cambridge figural flower holders (“flower frogs”) was published in the September 2022 issue of the *Crystal Ball*. Time will tell if versions or colors of specific Cambridge figural flower holders that are currently unknown will surface in the future. Many collectors were involved in constructing the chart, and it represents shared knowledge at this time.

Documentation of all figural flower holders that are known to have been made by Cambridge should be helpful to collectors, but there remains the pesky problem of identifying reissues of figural flower holders that were made using the original Cambridge mold.

First, we should review the distinction between a “reissue” and a “reproduction”. Application of the two words isn’t uniform by all. However, many consider a reissue to be an item made by a different entity than the original company that produced the item using the same mold. On the other hand, a reproduction is produced from a completely new mold that is made to copy an item made by the original company. This article reviews the reissues of figural flower holders (with holes) using the original Cambridge molds. Reissues or reproductions of Cambridge figurines (without holes) or figurine-based lamps aren’t discussed. We aren’t aware of reproductions of Cambridge figural flower holders using a completely new mold.

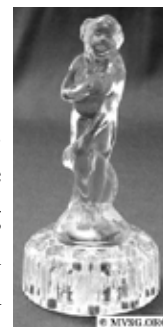
At this time, we believe only four figural flower holders were reissued by other companies using the original Cambridge molds. They are the 6” Bashful Charlotte, 11” Bashful Charlotte, 8½” Draped Lady, and Seagull. Current knowledge on these reissues follows.

Some have suggested that all 6” Bashful Charlotte, 11” Bashful Charlotte, and 8½” Draped Lady with the #3 ribbed base (vertical external ribs) were reissues made by other companies. That isn’t the case, because Cambridge altered the molds for these flower holders in 1943 by changing the base from #2 (smooth) to #3 (with vertical external ribs). The final closing of the

Cambridge Glass Company was in 1958, so 15 years remained between the time of the change to the #3 ribbed base until the closure of the company. All three flower holders were made by Cambridge sometime within that 15-year period.

## 6” Bashful Charlotte

The Imperial Glass Company, Bellaire, OH acquired all the Cambridge molds after the closure of the Cambridge company. Mirror Images, a marketing group, developed an agreement with Imperial in the 1980s to produce an altered version of the 6” Bashful Charlotte with the base hollowed out and holes removed. At that point, of course, the Bashful Charlotte was no longer a figural flower holder but, instead, it became a figurine.



Apparently, however, Imperial conducted test runs using the original Cambridge mold with the #3 ribbed base prior to the agreement with Mirror Images, because unfamiliar colors of 6” Bashful Charlotte surface from time to time. Those that aren’t Cambridge colors can easily be attributed to Imperial. A problem for collectors is 6” Bashful Charlotte made by Cambridge versus Imperial in crystal and light blue. Current thinking is 6” Bashful Charlotte with the #3 ribbed base that have “Pat. No. 1645577” on the underside from an impression in the mold were made by Cambridge (crystal and Moonlight), but those lacking the patent number on the underside were made by Imperial.

## 11” Bashful Charlotte

The last mention of the 11” Bashful Charlotte in currently available Cambridge catalogs and price lists is in the January 1, 1940 catalog. Therefore, this figural flower holder seems to have been removed from production sometime prior to 1945. However, sometime between 1943 and 1945, we believe





Cambridge made the 11” Bashful Charlotte with the #3 ribbed base and the “Pat. No. 1645577” on the underside in crystal and, perhaps, Moonlight.

Imperial didn’t use this mold while it was in its possession. However, the Summit Art Glass Company acquired the mold from Imperial and reissued the 11” Bashful Charlotte with the #3 ribbed base in several colors. For collectors, the outcome is mostly a good one, because differentiating 11” Bashful Charlotte made by Cambridge versus those made by Summit tends to be easy. All with the #2 smooth base were made by Cambridge. Those with the #3 ribbed base were made by Summit, except for 11” Bashful Charlotte in crystal and, perhaps, Moonlight, that have “Pat. No. 1645577” on the underside. We believe Summit made only colored glass and not crystal.

### 8½” Draped Lady

Documentation exists that Imperial reissued the 8½” Draped Lady with the #3 ribbed base in crystal and doeskin during a period from 1962 to 1965. Doeskin was Imperial’s version of a satin (frosted) finish. However, Imperial’s doeskin finish was fainter in appearance (less time dipped in acid) than Cambridge’s satin (frosted) finish. We believe Imperial may have also produced the 8½” Draped Lady in its light blue.



The method of differentiating the 8½” Draped Lady made by Imperial (prior to a marketing agreement with Mirror Images that will be discussed in the next paragraph) is the same as for the 6” Bashful Charlotte – those with a “Pat. No. 1645577” on the underside were likely made by Cambridge and those lacking either the patent number or a Mirror Images signature on the underside were likely made by Imperial. Also, the extent of a satin finish on 6” Bashful Charlotte and 8½” Draped Lady in crystal can help differentiate Cambridge from Imperial (doeskin) production.

Mirror Images, the marketing group, also developed an agreement with Imperial and/or the Mosser Glass Company, Cambridge, OH to reissue the 8½” Draped Lady in numerous attractive colors, some of which are very similar to Cambridge colors, including light blue,

vaseline, ruby, cobalt, and light violet. These flower frogs were extremely well-executed with crisp detail and bright color. Some have a carnival treatment. Thankfully, it seems all of these marketed by Mirror Images are clearly signed on the underside with an “I over an M” in the glass.

### Seagull

Catalogs and price lists suggest Cambridge made the Seagull flower holder only in crystal. However, that wouldn’t have precluded some of them being made with a satin finish. Imperial documentation indicates they reissued the Seagull flower holder during 1962 in crystal and doeskin. Seagull flower holders with a less-pronounced satin finish than was usually applied by Cambridge likely have Imperial’s doeskin finish. No method seems to exist to differentiate a Seagull flower holder made by Cambridge versus Imperial other than the extent of a satin finish. ■



673-15” Bowl  
1115 Flower Holder  
Plate Etched “704”

Welcome to the eBay Report, featuring Cambridge glass items that sold on eBay circa mid- September through mid-October 2022. Selling prices are rounded to the nearest dollar. If no color is mentioned, assume that the piece or part of it being discussed is crystal. If I refer to an auction as "incognito," that means that the seller did not know he or she was offering Cambridge glass, and didn't use the word "Cambridge" in the description. I also try to mention if a listing was a Buy It Now offering, as opposed to an auction style listing. I think it's important to distinguish between the two, as the price for an auctioned item reflects competitive bidding (or no competition, if it sells for the opening bid.) Here we go:

### Rose Point

A seller offered two #1066 footed ivy ball vases at \$199 each Buy It Now. Both sold.



A #1528 10 inch flat bud vase sold for \$75 Buy It Now.

A #3121/3 tall footed candy box with blown lid sold for \$225, after seller discounted the asking price by 10%.

### Statuesque (Nude Stem) and Related Items

A seller offered two cocktails listed as "Cambridge Statuesque Nude Amber Stem Goblet Wine Cordials" for \$89 each. Both sold. Of course, these were made by Imperial after Cambridge closed.



An ivy ball vase with Forest Green top sold for \$185 Buy It Now, while one with an Amethyst top sold for \$178. One in Royal Blue sold for \$118. A second seller offered the same piece, which sold for \$113. The seller of the second one described the color as "Carmen Blue." Does that mean a red one would have been "Royal Ruby"?



A set of 4 cocktails with Gold Krystol bowls (the seller called them Mandarin Gold) sold for \$249 Buy It Now. For comparison, a set of the same cocktails (but 6 of them) with Gold Krystol bowls but with a Crown Tuscan stem were offered for \$500, but sold for an undisclosed Best Offer. A second set of 6, exactly the same as the above, sold for \$600 Buy It Now.



### Gold, Silver and Enamel Decorations

A #3400/8 11 inch 2-handled plate in Carmen with an ornate and detailed silver deposit decoration sold for the opening bid of \$35. Some scratches were noted. The decoration was not one you see often.



A #1300 footed vase in Crown Tuscan etched and gold encrusted Portia sold for \$95 Buy It Now. The seller described it as a "rare hatpin vase," but I am pretty sure the flared top rim got damaged somewhere along the line, and that entire part was ground off. Caveat emptor.



A pair of #4073 4-1/2 inch candlesticks and what appears to be a #45 9-1/2 inch low footed comport in Pomona Green (the color formerly known as Avocado) with the #547 gold encrusted band etching of roses sold for the opening bid of \$125. This set had been floating around for a long time without selling.

A pair of #225 9 inch candlesticks in Primrose with an etched pattern of a hanging urn of flowers that was filled in with colored enamel and gold sold for \$204. There was some gold loss to the trim lines on the candle sockets, but... who cares?



A pair of #647 "keyhole" double candlesticks in Ebony with gold encrusted Wildflower etching were offered for \$275, and sold for an undisclosed Best Offer.



A #3400/38 80 ounce ball jug in Ebony with a silver deposit decoration sold for \$430.



### Etched Tableware & Stemware

A #3400/1185 10 inch 2-handled bowl in Willow Blue etched Rosalie sold for \$37 Buy It Now.



A pair of #3115 5 ounce footed juices with PeachBlo bowl and Willow Blue foot, etched Rosalie, sold for \$76, while a set of three 8-1/2 inch water goblets in the same shape, color combination and etching sold for \$167.



A #16 Everglade 13 inch “swans and lily pads” design bowl in Moonlight Blue sold for \$69.



A pair of #1955 14 ounce tumblers in the late Sunset color sold for \$99.



A #119 83 ounce jug in PeachBlo etched Apple Blossom sold for \$194, despite a handle fracture. This could be because at least 3 other Cambridge jug shapes found with the Apple Blossom etching are seen more often than this one. Still, that number seemed high for a damaged item.

A #1138 triple candlestick in Carmen sold for \$103 in an incognito listing.

A Rose Lady figural flower holder on the tall base with beading in PeachBlo sold for the \$99 opening bid.



One seller offered multiple groups of matching pieces in Heatherbloom etched Gloria. A set of 6 #3400/60 “bread & butter” plates sold for the \$280 opening bid.

A set of 6 #3035 wines sold for the \$325 opening bid. A set of 6 #3035 cocktails sold for \$380 Buy It Now. A set of 8 #3400/62 (or /176) 8 inch salad plates in Heatherbloom etched Gloria were offered for \$560 Buy It Now, and sold for an undisclosed Best Offer. Some scratching was noted. A set of 6 “luncheon/dinner” plates that measured “9 or 10 inches” across sold for \$450 Buy It Now. Now that I think about it, I guess you *would* get a different measurement, depending on whether you measured them side to side or point to point. I suspect these were the #3400/63 9-1/2 inch dinner plates.



A pair of #638 triple “keyhole” style candleholders with the round base in PeachBlo sold for \$168 Buy It Now.



An Amber #3500/109 Gadroon 4-toed ram’s head bowl was offered for \$295, but sold for an undisclosed Best Offer. This bowl seems to be a redesign of the #732 12 inch by 6 inch refectory bowl.

A set of 6 #3500 Gadroon 8-1/4 inch long bowl water goblets with Carmen bowls sold for \$300 Buy It Now.



A set of 6 #3787/85 Cambridge Square 32 ounce decanter sold for \$260 Buy It Now.



### Miscellaneous

A #3077 63 ounce jug and cover in Gold Krystol sold for \$40 in an incognito listing.



A #1956/3/4 centerpiece consisting of a flower frog-like base with 3 holes, into which 3 small peg vases were inserted, was offered for \$65, selling for an undisclosed Best Offer. All 4 pieces had an original Cambridge label.

That’s it for now. If you see any interesting Cambridge glass on eBay that you think I should be watching or reporting on, or if you have any other input, feel free to contact me at [LAGlass@pacbell.net](mailto:LAGlass@pacbell.net). I am well aware that I don’t catch every interesting listing, and now that eBay no longer has a category devoted to Cambridge glass, I will especially need your help.

Until next time, happy Cambridge hunting!

A #489 4-piece boudoir set in PeachBlo sold for \$69 Buy It Now. This had the oval, rayed, handled tray that was used for many such sets, plus the covered pitcher with the Life Saver shaped handle on the lid and a similarly-wavy tumbler.



## Membership Corner

The NCC Board of Directors relies on the five operational vice-presidents to oversee most of the work of NCC. Additionally, the board may create committees to help conduct business. In June, the board approved the creation of a membership committee to support the Member Services operational area. A primary function of this committee is to support membership retention and new member recruitment.

We are open to your inputs to ensure that NCC is relevant to *all* of our members, especially our members unable to attend NCC events in Ohio. We have been reviewing the survey results. We want to make sure that new members are welcomed with a personal introduction to NCC. One of the items identified in the survey was a mentor program. We have started thinking about what that entails and will be working over the next few months to define the process and identify volunteers willing to support it. The year 2023 will be a milestone for NCC. We want to make sure information about NCC is available at various glass shows. If you are willing to distribute NCC information at a glass show, let me know.

Committee members are Elaine Thompson, chair, Ken & Jane Filippini, Freeman Moore, Christine Smith, and Lisa Strebler.

If you are interested in serving on this committee, please contact Elaine Thompson at [elainethompson@roadrunner.com](mailto:elainethompson@roadrunner.com)

## New Members

Dave Fordyce

MD

AmazonSmile is a program that donates 0.5% of your eligible purchases on Amazon to a charity of your choice. Though 0.5% is not a large donation and it isn't intended to replace your regular charitable activities, AmazonSmile is still a great way to take advantage of a service you're probably using anyways.



You simply start your Amazon shopping at [smile.amazon.com](https://www.amazon.com/smile). You shop as you normally would on the site, at no extra cost to you, and you don't need to make a separate account. *No extra work!*

You'll be able to tell you're shopping from the correct page if you see the AmazonSmile logo in the corner of the page and "Supporting [charity of your choice]" below the search bar. When you hover over the name of the charity, you can see additional information about it and track the donation amount you've generated through your purchases.

AmazonSmile is an easy way for your online shopping to benefit National Cambridge Collectors.

## Volunteer Opportunity

We currently have a volunteer opportunity to help us navigate the process of obtaining grants.

We could use the help of someone experienced at writing grants to help NCC fund new activities, without relying upon the financial support of our members. We have been successful in the past with Cambridge and Ohio grants, but we believe there are untapped opportunities from the Federal government. Perhaps this could be a position for someone wanting to try a new experience. We'll help you as much as possible, and make it easy for you to do remotely.

If interested, please contact Julie Buffenbarger, V.P. of Development, for more information.

[Julie.Buffenbarger@gmail.com](mailto:Julie.Buffenbarger@gmail.com)



# SEARCHING FOR:

## Vichy Patterned Stemware Line #3129



Calling all collectors and dealers! I am searching for Vichy patterned stemware, specifically the glass pictured on the top right of this ad. If you are looking to sell or downsize your collection, please call/email:

**Lara Bond**

**(310) 945-8505**

**[bondlarasophia@gmail.com](mailto:bondlarasophia@gmail.com)**



## NCC Events

\*\*\*\*\*

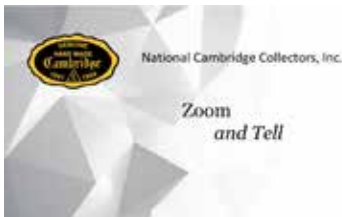
**March Meeting and Auction  
Friday March 17 and 18, 2023**

\*\*\*\*\*

**2023 NCC Convention  
June 22-24, 2023**

\*\*\*\*\*

**Fall Membership Meeting  
Friday October 21, 2023**



Contact [membership@cambridgeglass.org](mailto:membership@cambridgeglass.org) if you don't get the monthly email with the Zoom information.

- |          |   |
|----------|---|
| November | The item you are most thankful to have found. |
| December | Decorating with Cambridge Glass               |

## *Member Benefit*

Each NCC household is allowed one free 20-word classified ad in the Crystal Ball per calendar year as part of their membership. This can be a "For Sale" or "Wanted" type of classified ad. Submit your ad by email to [editor@cambridgeglass.org](mailto:editor@cambridgeglass.org)

## CLASSIFIEDS

Nothing this month. 🙄

What are you looking for?



### **November 5-6, 2022**

Michigan Depression Glass Society  
Annual Depression Glass Show & Sale  
Ford Community & Performing Arts Center  
15801 Michigan Ave  
Dearborn, MI 48126  
<https://www.michigandepressionglass.com/glass-show>

### **November 12, 2022**

Hudson Valley Depression Glass Club  
20th Century Glass, Pottery, and Vintage Show & Sale  
Veterans Memorial Building  
413 Main St  
Beacon, NY  
<https://www.facebook.com/hvdepressionglassclub>

### **January 28-29, 2023**

Collectors of Depression Glass-Jacksonville, Florida  
48th Annual Show & Sale  
Fraternal Order of Police Building  
5530 Beach Blvd  
Jacksonville, FL  
<http://www.depressionglassclubjax.com>

### **February 4-5, 2023**

South Florida Depression Glass Club's 49th  
Vintage American Glass and Pottery Show & Sale  
Tamarac Community Center  
8601 West Commercial Blvd  
Tamarac, FL 33321  
<http://www.sfdgc.com/>

### **February 11-12, 2023**

Clearwater Elegant & Depression Glass Show & Sale  
Morningside Recreation Complex  
2400 Harn Blvd.  
Clearwater, FL 33764  
[gingerbreadantiques77@gmail.com](mailto:gingerbreadantiques77@gmail.com)

### **February 18-19, 2023**

The Houston Glass Show & Sale  
plus The Best Little Antique Show in Texas  
Fort Bend County Fairgrounds  
Hwy 36 and Hwy 59  
Rosenberg, TX  
<http://www.maxmillerantiques.com>



# DEALER DIRECTORY

**Dealer Directory - \$24 for 12-months, size limited by box (see below). Includes listing on NCC website.** Electronic submissions should be emailed to: [editor@cambridgeglass.org](mailto:editor@cambridgeglass.org)

## Advertising Rates:

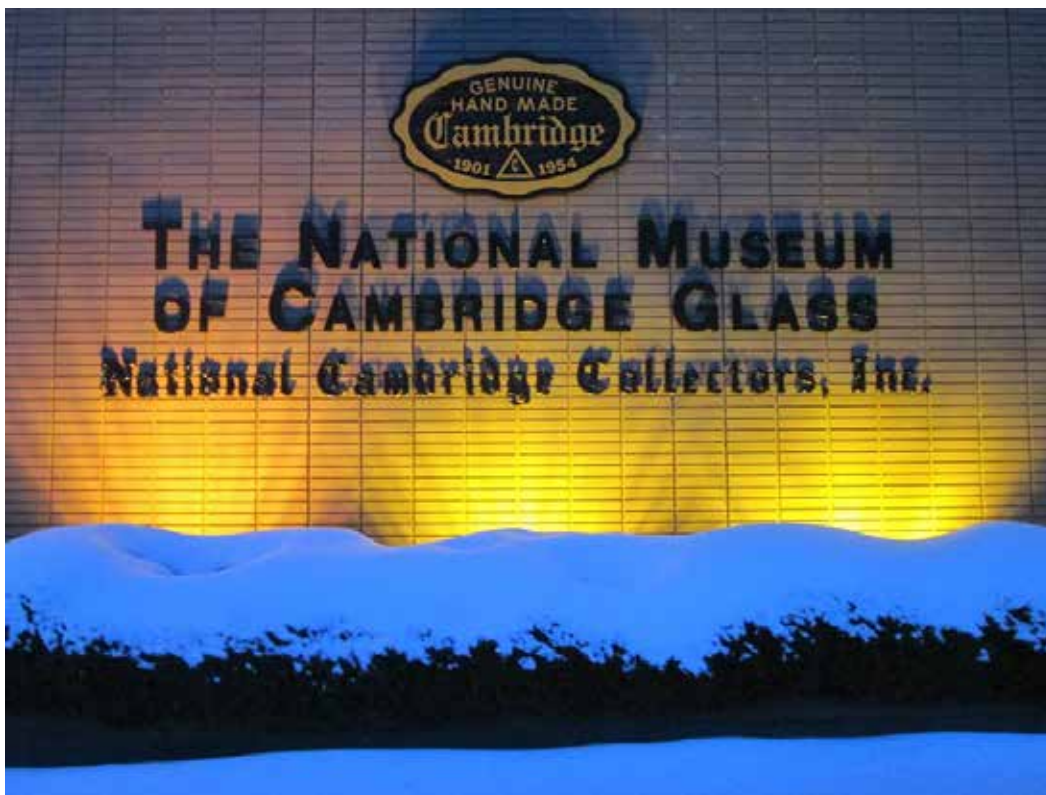
1/8 page \$15      1/4 page \$20  
 1/2 page \$30      Full page \$50

Mailed submissions and all payments should go to PO Box 416, Cambridge, OH 43725. Deadline is 10th of preceding month. Ads must be paid in advance. Show listings are FREE; send info to PO Box or e-mail address 60 days before event.

<p style="text-align: center;"><b>Max Miller</b>  <b>Elegant American Glassware</b>  <a href="http://www.maxmillerantiques.com">www.maxmillerantiques.com</a></p> <p>The Market Place          10910 Katy Freeway.      713-410-4780          Houston TX 77043      <a href="mailto:mmxglass@aol.com">mmxglass@aol.com</a></p>	<p style="text-align: center;"><b>ISAACS ANTIQUES</b>          (740) 826-4015</p> <p style="text-align: center;">↔ <i>located in</i> ↔  <b>DealBusters Marketplace</b>  <b>61 S. 2nd Street</b>  <b>Byesville, OH</b>  <b>(740) 605-1010</b></p>
<p style="text-align: center;"><b>Glen &amp; Carolyn Robinson</b>  <b>White Rose Antiques</b>  <b>Specializing in Depression Era Glassware</b></p> <p style="text-align: center;"><b>2454 McFarland Road</b>  <b>York, SC 29745</b></p> <p>803-684-5685  <a href="mailto:gandcrobinson@aol.com">gandcrobinson@aol.com</a>  <a href="http://whiteroseglassware.com">whiteroseglassware.com</a></p>	<p style="text-align: center;"><b>MARGARET LANE ANTIQUES</b></p> <p style="text-align: center;"><b>2 E. Main St. New Concord, OH 43762</b>          Lynn Welker      (740) 705-1099</p> <p style="text-align: center;">Cambridge Glass Matching Service          Hours: Mon-Fri 10-12 AM, 1-5 PM          or by appointment</p>
<p style="text-align: center;"><b>CRYSTALLINE COLORS</b>  <i>Cambridge • Fostoria • Elegant Glass</i>          Booth and Showcases in the  <b>Medina Antique Mall</b>          Medina, OH (I-71, exit 218)</p> <p style="text-align: center;">Lynne R. Franks    216-661-7382</p>	<div style="border: 1px solid black; padding: 5px;"> <p style="text-align: center; background-color: #4b0082; color: white; margin: 0;"><b>Connecting Buyers &amp; Sellers!</b></p> <p style="text-align: center; margin: 0;">Tell us what you are looking for and we help find it.</p> <p style="text-align: center; background-color: #4b0082; color: white; margin: 0;"><b>CAMBRIDGE GLASS.US</b></p> <p style="text-align: center; margin: 0;">P. Snyder 740-601-6018</p> <p style="text-align: center; background-color: #4b0082; color: white; margin: 0;"><b>E-Mail and Find Your Glass!</b></p> <p style="text-align: center; margin: 0;"><a href="mailto:psnyder@cambridgeglass.us">psnyder@cambridgeglass.us</a></p> <p style="text-align: center; margin: 0;"><a href="http://www.cambridgeglass.us">www.cambridgeglass.us</a></p> <p style="font-size: small; margin: 0;">When you are searching for Cambridge glass, email your request and it is emailed to all members and dealers.              P. Snyder, 1500 Edgewood Dr., Circleville, Ohio 43113</p> </div>
<p style="text-align: center;"><b>CRYSTAL LADY</b>          1817 Vinton St.      Omaha, NE 68108  <b>Bill, Joann and Marcie Hagerty</b>          402-699-0422</p> <p style="text-align: center;">Specializing in Elegant Glass &amp; Collectibles  <a href="http://www.crystalladyantiques.com">www.crystalladyantiques.com</a></p>	<div style="border: 2px solid red; padding: 10px; text-align: center;"> <p style="font-size: large; margin: 0;"><b>Our House Antiques</b></p> <p style="font-size: small; margin: 0;">Linda and David Adams              Las Vegas, Nevada              702-302-8282</p> <p style="font-size: x-small; margin: 0;"><i>Shows and Mail Order only</i></p> <p style="font-size: x-small; margin: 0;">email: <a href="mailto:David@OurHouseAntiques.com">David@OurHouseAntiques.com</a></p> <p style="font-size: x-small; margin: 0;"><a href="http://www.OurHouseAntiques.com">www.OurHouseAntiques.com</a></p> </div>



National Cambridge Collectors, Inc.  
PO Box 416  
Cambridge OH 43725  
email: [editor@cambridgeglass.org](mailto:editor@cambridgeglass.org)  
website: [www.cambridgeglass.org](http://www.cambridgeglass.org)



***The National Museum  
of Cambridge Glass***  
National Cambridge Collectors, Inc.

**Holiday Hours  
Friday and Saturday  
Noon to 4:00 p.m.  
November 4 - December 17**

