

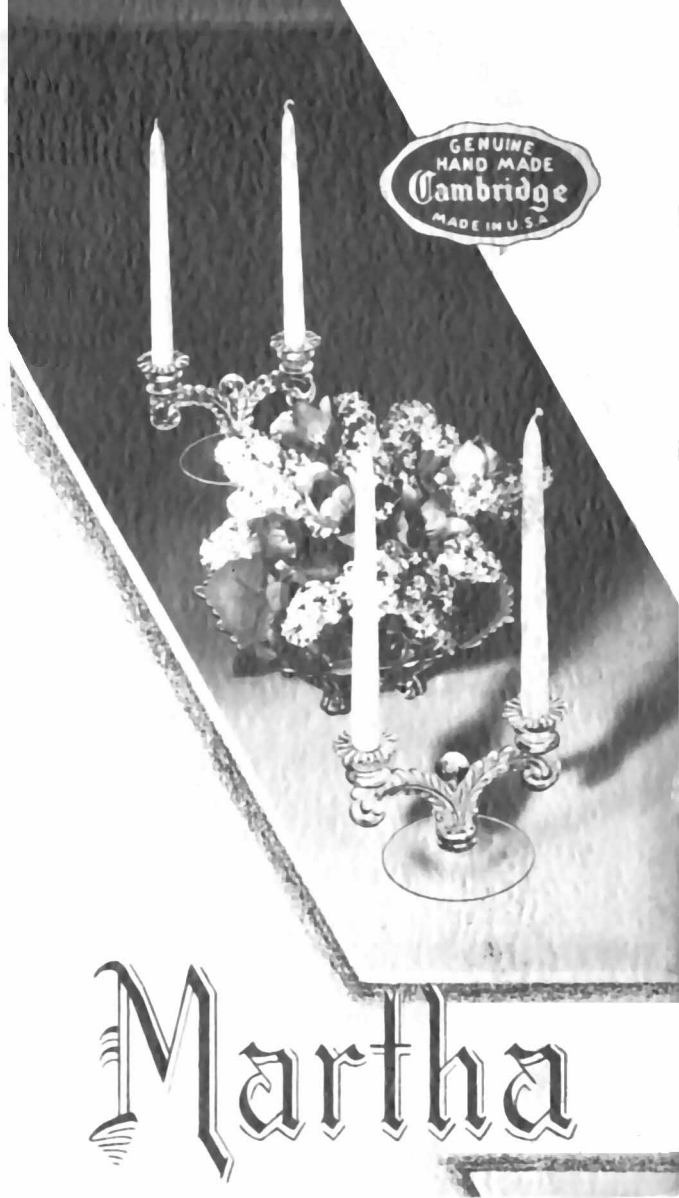


Only a few of the large selection of pieces available in the new MARTHA pattern are illustrated here.

+ + +

Hand-made sparkling crystal, carefully finished and correctly styled for lasting desirability.

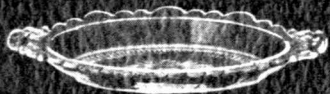
**The Cambridge Glass Company
Cambridge, Ohio**



Martha

MARTHA

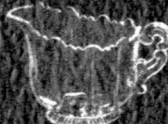
Patent Numbers: 111,949, 111,950, 111,591



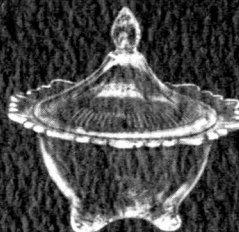
353



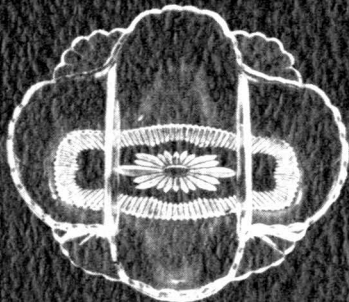
252



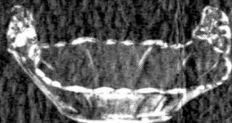
252



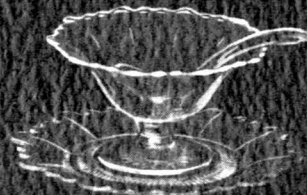
311



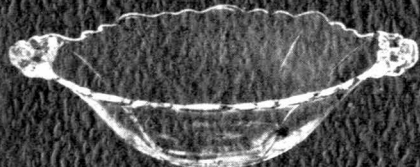
209



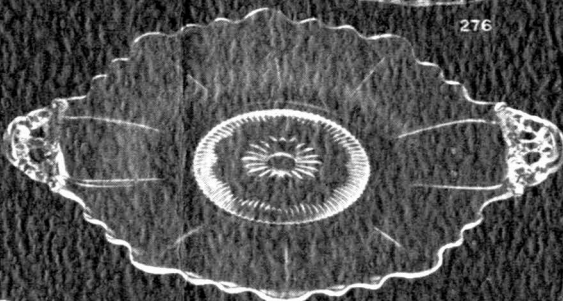
326



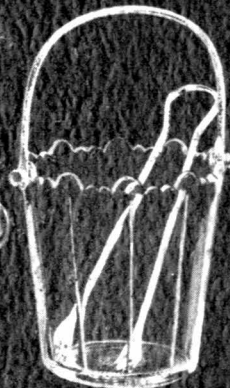
276



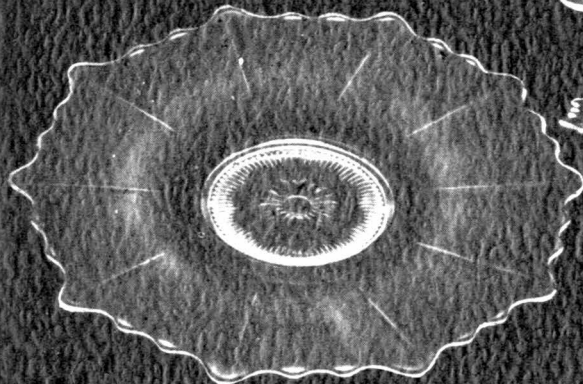
435



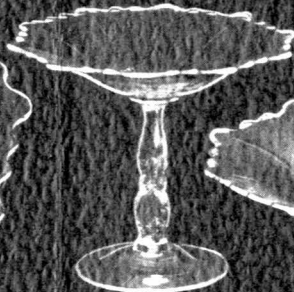
138



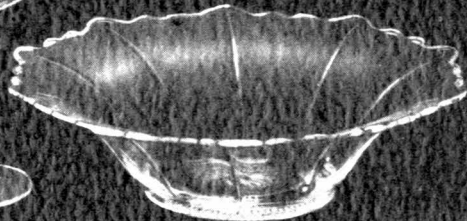
674



167



469



440