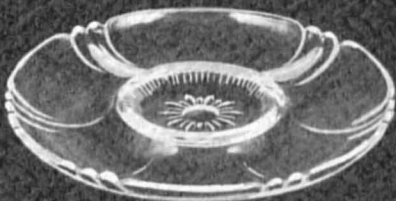
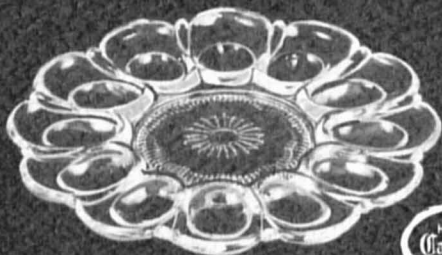


Oyster Plate



Artichoke Plate



Deviled Egg Plate (Pat. Pending)



UNUSUAL

# GLASSWARE

ACCESSORIES

Lend that Extra Touch to Your Table!



## OYSTER PLATE—No. 3600/156

A convenient and practical service for Oysters on the half shell or other styles. A space in the center will hold a container for sauce.

## ARTICHOKE PLATE—No. 3600/158

The center of this plate is for the Artichokes, the little well is for the melted butter or sauce, the balance of the plate is for the uneaten portion of Artichokes.

## DEVEILED EGG PLATE—No. 3600/157 (Patent pending)

Designed to hold 12 halves of Deviled Eggs, 12 complete hard boiled Eggs, etc. The center space may be dressed with lettuce, radishes, olives, pickles or other appetizers.

Please send me:

.....Oyster Plates at \$15.00 doz.

.....Artichoke Plates at \$15.00 doz.

.....Deviled Egg Plates at \$18.00 doz.

Charge.... Check Enclosed.... C.O.D.....

Name.....

Address.....

City.....State.....